

FLORENCE, SOUTH CAROLINA

AL-145 (FAA)

19339

WAAS CH 70710 W09A	APP CRS 088°	Rwy Idg TDZE Apt Elev	6502 147 147
--	------------------------	-----------------------------	---

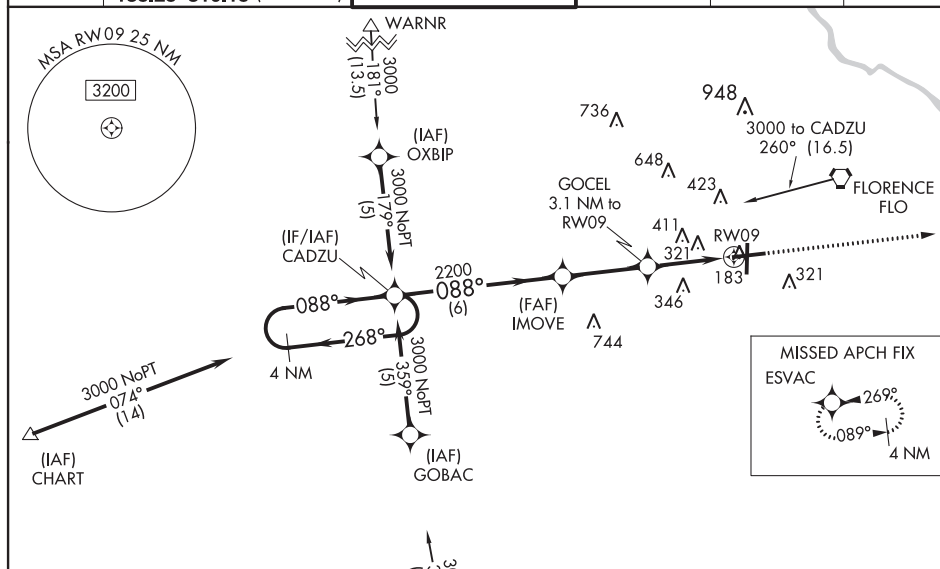
OLD**RNAV (GPS) RWY 9**
FLORENCE RGNL (FLO)

⚠ Night landing: Rwy 1, 19 NA. For uncompensated Baro-VNAV systems, LNAV/VNAV NA below -15°C (5°F) or above 49°C (120°F). DME/DME RNP-0.3 NA. When local altimeter setting not received, use Darlington altimeter setting and increase LPV DA to 489 feet, LNAV/VNAV DA to 695 feet and all visibilities to 1¼ miles; increase all MDA 60 feet and LNAV Cat C visibility ¼ mile. For inoperative MALSR when using Darlington altimeter setting, increase LPV all Cats visibility to 1¼ mile. Baro-VNAV and VDP NA when using Darlington altimeter setting.



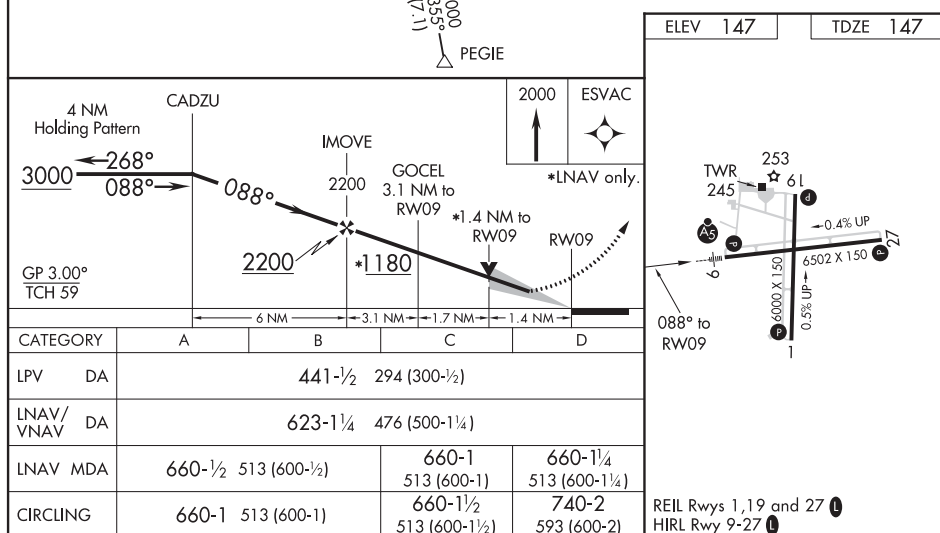
MISSED APPROACH:
Climb to 2000 direct
ESVAC and hold.

ATIS 123.625	FLORENCE APP CON* 118.6 341.7 (256°-074°) 135.25 316.15 (075°-255°)	FLORENCE TOWER* 125.1 (CTAF) 0 353.85	GND CON 121.9 353.85	CLNC DEL 121.9 353.85	UNICOM 122.95
------------------------	---	--	--------------------------------	---------------------------------	-------------------------



SE-2, 08 OCT 2020 to 05 NOV 2020

SE-2, 08 OCT 2020 to 05 NOV 2020

FLORENCE, SOUTH CAROLINA
Orig-C 20AUG15

34°11'N-79°43'W

FLORENCE RGNL (FLO)
RNAV (GPS) RWY 9

KFLO
FLORENCE RGNL
FLORENCE
SC
NEW CIRCLING CRITERIA
1:100,000
RADII: 1.30, 1.81, 2.84, 3.71

