

FEDERAL AVIATION ADMINISTRATION  
FLIGHT STANDARDS SERVICE  
STANDARD TERMINAL ARRIVAL (STAR)

Bearings, headings, courses, tracks and radials are magnetic. Elevations and altitudes are in feet, MSL. Altitudes are minimum altitudes unless otherwise indicated.  
Distances are in nautical miles (NM). Graphic depictions attached.

| Arrival Name        | Number     | STAR Computer Code  | Superseded Number | Dated | Effective Date     |
|---------------------|------------|---------------------|-------------------|-------|--------------------|
| <b>GTOUT (RNAV)</b> | <b>ONE</b> | <b>GTOUT.GTOUT1</b> | <b>NONE</b>       |       | <b>19 May 2022</b> |

TRANSITION ROUTES:

| Transition Name | Transition Computer Codes | From FIX/NAVAID | To FIX/NAVAID | Course | Distance | MEA   | MOCA | MAA | Crossing Altitudes / Fixes |
|-----------------|---------------------------|-----------------|---------------|--------|----------|-------|------|-----|----------------------------|
| FORYU           | FORYU.GTOUT1              | FORYU           | FORYU         |        |          |       |      |     | AT/ABOVE 13000             |
|                 |                           |                 | NICCK         | 181.58 | 06.50    | 11000 | 1700 |     | BETWEEN 12000 AND 14000    |
|                 |                           |                 | BGBBY         | 165.44 | 09.11    | 6000  | 1700 |     | AT/ABOVE 10000             |
|                 |                           |                 | GTOUT         | 167.56 | 04.50    | 6000  | 1500 |     | BETWEEN 9000 AND 11000     |
| LPERD           | LPERD.GTOUT1              | LPERD           | LPERD         |        |          |       |      |     | BETWEEN FL300 AND FL340    |
|                 |                           |                 | NOOMN         | 182.27 | 53.67    | FL180 | 1700 |     | AT/ABOVE FL190             |
|                 |                           |                 | FORYU         | 181.71 | 24.70    | 11000 | 1700 |     | AT/ABOVE 13000             |
|                 |                           |                 | NICCK         | 181.58 | 06.50    | 11000 | 1700 |     | BETWEEN 12000 AND 14000    |
|                 |                           |                 | BGBBY         | 165.44 | 09.11    | 6000  | 1700 |     | AT/ABOVE 10000             |
|                 |                           |                 | GTOUT         | 167.56 | 04.50    | 6000  | 1500 |     | BETWEEN 9000 AND 11000     |

ARRIVAL ROUTE DESCRIPTION:

LANDING RWY 17L/R, 18L/R: FROM GTOUT ON TRACK 180.05/5.54 TO TUGLE, THEN ON TRACK 220.99/7.96 TO CROSS BANYA AT 7000 AND AT 210 KIAS, THEN ON HEADING 250.00 OR AS ASSIGNED BY ATC. EXPECT RADAR VECTORS TO FINAL APPROACH COURSE.

PBN REQUIREMENT NOTES

RNAV 1 - DME/DME/IRU OR GPS

EQUIPMENT REQUIREMENT NOTES

RADAR REQUIRED

PROCEDURAL DATA NOTES:

NOTE: JET AIRCRAFT ONLY.

NOTE: FORYU TRANSITION ATC ASSIGNED.

NOTE: TRACON will assign landing runway.

NOTE: When landing South, For vertical planning select Runway 17L.

NOTE: When landing North, file and expect SNFLD (RNAV) STAR.

FIXES AND/OR HOLDING PATTERNS:

CHART HOLDING AT GTOUT: HOLD N, LT, 180.05 INBOUND, 10 NM LEGS.

CHART HOLDING AT LPERD: HOLD N, RT, 194.35 INBOUND, 10 NM LEGS.

CHART HOLDING AT NOOMN: HOLD N, LT, 182.27 INBOUND, 10 NM LEGS.

COMMUNICATIONS:

CHART: ORLANDO APP CON

FEDERAL AVIATION ADMINISTRATION  
FLIGHT STANDARDS SERVICE  
STANDARD TERMINAL ARRIVAL (STAR)

Bearings, headings, courses, tracks and radials are magnetic. Elevations and altitudes are in feet, MSL. Altitudes are minimum altitudes unless otherwise indicated.  
Distances are in nautical miles (NM). Graphic depictions attached.

| Arrival Name        | Number     | STAR Computer Code  | Superseded Number | Dated | Effective Date     |
|---------------------|------------|---------------------|-------------------|-------|--------------------|
| <b>GTOUT (RNAV)</b> | <b>ONE</b> | <b>GTOUT.GTOUT1</b> | <b>NONE</b>       |       | <b>19 May 2022</b> |

AIRPORTS SERVED:

ORLANDO INTL, ORLANDO, FL (KMCO)

LOST COMMUNICATIONS PROCEDURE:

KMCO LANDING SOUTH: Continue track to BANYA, conduct Rwy 17L approach.

REMARKS:

MEAs AT or ABOVE FL180 for COMM and DME/DME/IRU SOLUTIONS.

ENVIRONMENTAL REVIEW UNDER ORDER 1050.1 (LATEST EDITION) AND THE NOISE SCREENING HAVE BEEN ACCOMPLISHED.

ADDITIONAL FLIGHT DATA:

DME/DME ASSESSMENT: SAT (RNP 2.0)

REFERENCE MAGNETIC VARIATION = KMCO 06W/2015

DME/DME ASSESSMENT: SAT (RNP 2.0)

CHART AT BANYA TERMINUS: LDG KMCO RWY 17L/R, 18L/R

*Digitally signed by*

FLIGHT INSPECTED BY:

JOEL P MURPHY  
Name

FPO  
Organization

03/15/2022  
Date

**ALLAN WILL**  
Mar 18, 2022

Signature

DEVELOPED BY:

VICKI TURNER  
Name

DESIGN AND IMPLEMENTATION MANAGER  
AJV-E22  
Organization

10/21/2021  
Date

*Digitally signed by*  
**ALLAN WILL**  
Mar 18, 2022

Signature

APPROVED BY:

MARLON ROBINSON  
Name

MANAGER, AJV-A420  
Organization

Date

*Digitally signed by*  
**ALLAN WILL**  
Mar 18, 2022

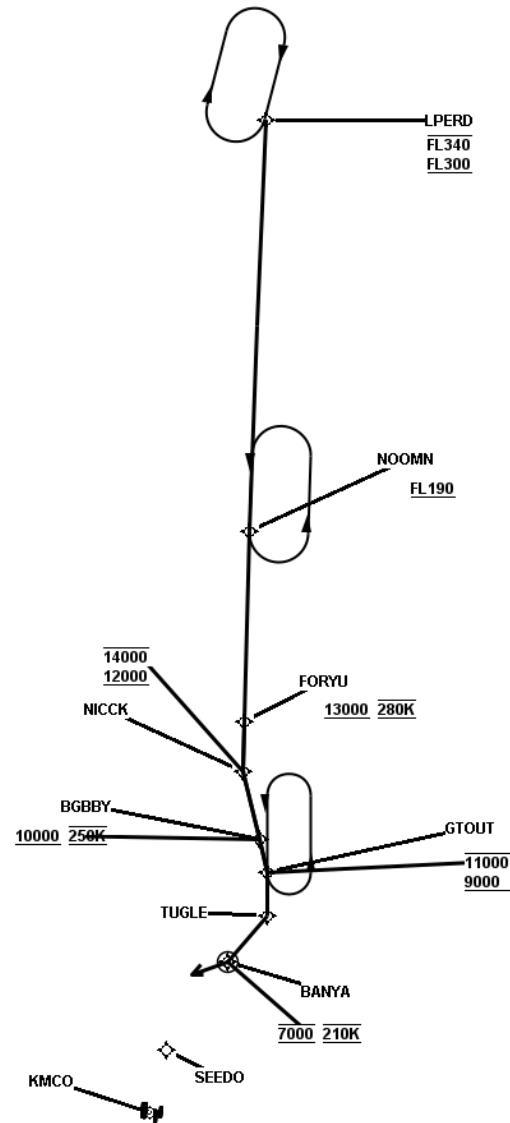
Signature

CHANGES:REASONS:

FEDERAL AVIATION ADMINISTRATION  
FLIGHT STANDARDS SERVICE  
STANDARD TERMINAL ARRIVAL (STAR)

Bearings, headings, courses, tracks and radials are magnetic. Elevations and altitudes are in feet, MSL. Altitudes are minimum altitudes unless otherwise indicated.  
Distances are in nautical miles (NM). Graphic depictions attached.

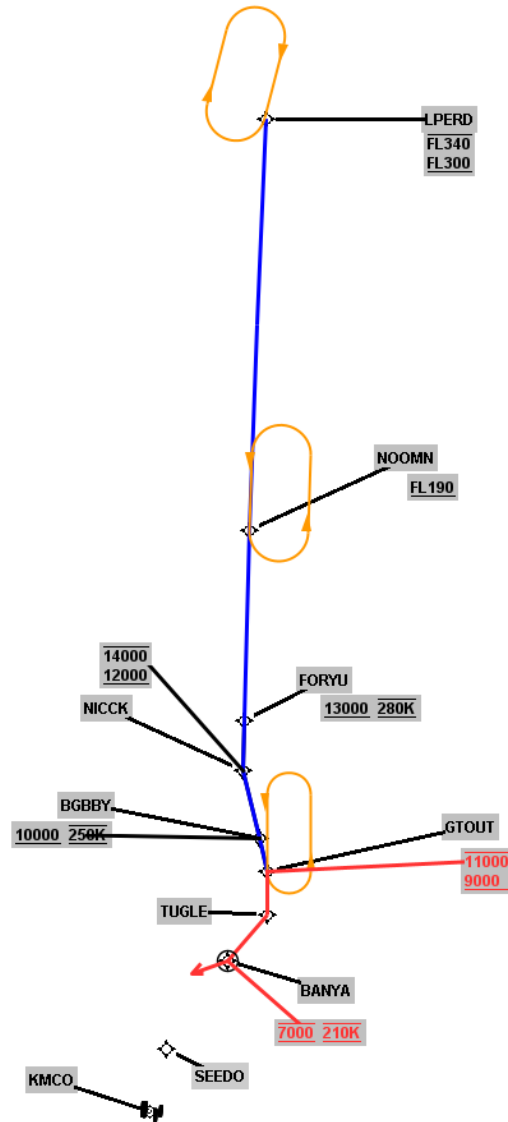
| Arrival Name        | Number | STAR Computer Code | Superseded Number | Dated | Effective Date |
|---------------------|--------|--------------------|-------------------|-------|----------------|
| GTOUT (RNAV)        | ONE    | GTOUT.GTOUT1       | NONE              |       | 19 May 2022    |
| Graphic Depiction 1 |        |                    |                   |       |                |



FEDERAL AVIATION ADMINISTRATION  
FLIGHT STANDARDS SERVICE  
STANDARD TERMINAL ARRIVAL (STAR)

Bearings, headings, courses, tracks and radials are magnetic. Elevations and altitudes are in feet, MSL. Altitudes are minimum altitudes unless otherwise indicated.  
Distances are in nautical miles (NM). Graphic depictions attached.

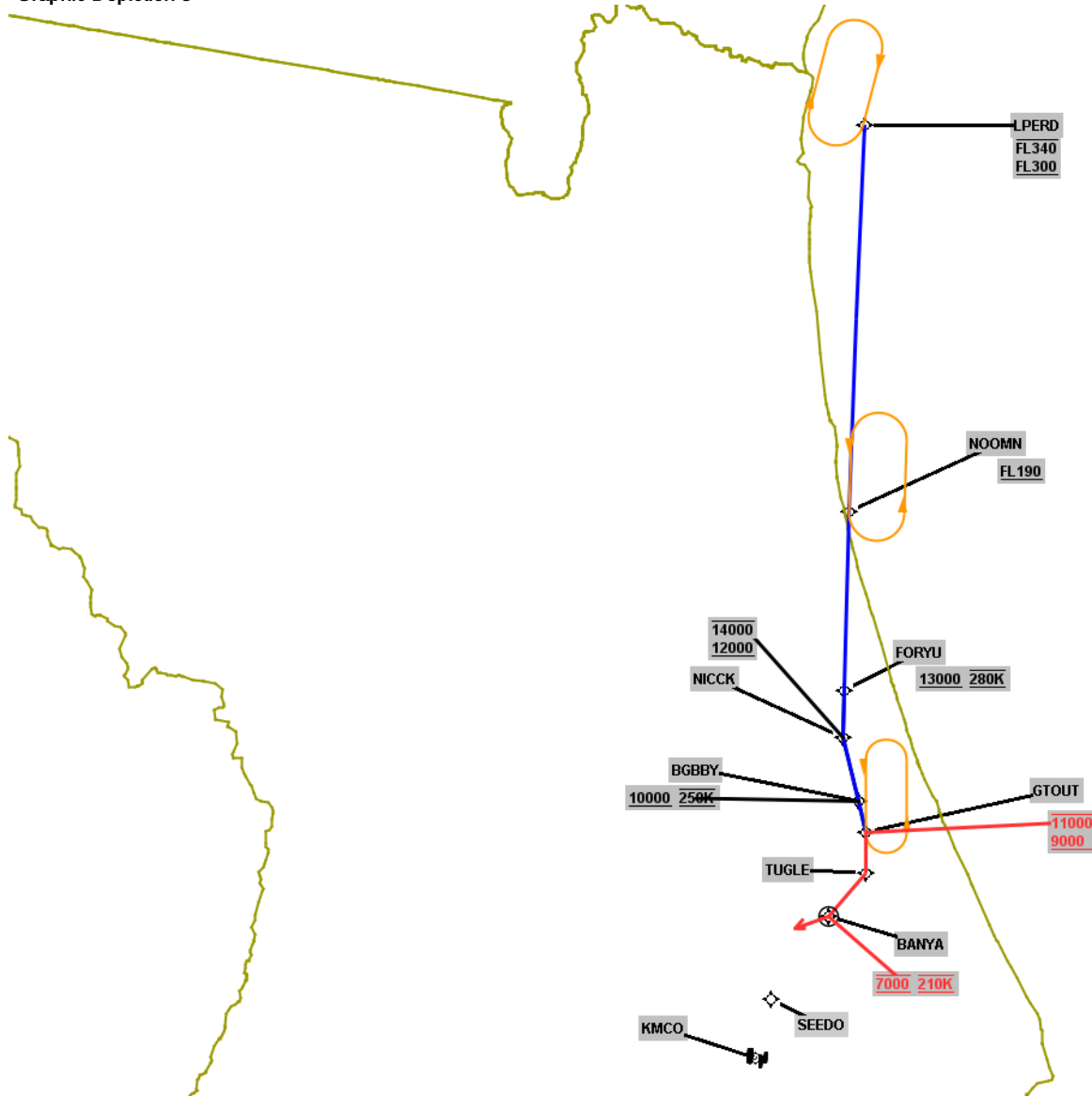
| Arrival Name               | Number     | STAR Computer Code  | Superseded Number | Dated | Effective Date     |
|----------------------------|------------|---------------------|-------------------|-------|--------------------|
| <b>GTOUT (RNAV)</b>        | <b>ONE</b> | <b>GTOUT.GTOUT1</b> | <b>NONE</b>       |       | <b>19 May 2022</b> |
| <b>Graphic Depiction 2</b> |            |                     |                   |       |                    |



FEDERAL AVIATION ADMINISTRATION  
FLIGHT STANDARDS SERVICE  
STANDARD TERMINAL ARRIVAL (STAR)

Bearings, headings, courses, tracks and radials are magnetic. Elevations and altitudes are in feet, MSL. Altitudes are minimum altitudes unless otherwise indicated.  
Distances are in nautical miles (NM). Graphic depictions attached.

| Arrival Name        | Number | STAR Computer Code | Superseded Number | Dated | Effective Date |
|---------------------|--------|--------------------|-------------------|-------|----------------|
| GTOUT (RNAV)        | ONE    | GTOUT.GTOUT1       | NONE              |       | 19 May 2022    |
| Graphic Depiction 3 |        |                    |                   |       |                |



FEDERAL AVIATION ADMINISTRATION  
FLIGHT STANDARDS SERVICE  
STAR (DATA RECORD)

| Arrival Name<br>GTOUT (RNAV)               |                          | Number<br>ONE |       | STAR Computer Code<br>GTOUT.GTOUT1 |        | Superseded Number<br>NONE |                | Dated   | Effective Date<br>19 May 2022 |
|--|--------------------------|---------------|-------|------------------------------------|--------|---------------------------|----------------|---------|-------------------------------|
| FIX/NAVAID                                 | LAT/LONG                 | C             | FO/FB | LEG<br>TYPE                        | TC     | DIST<br>(NM)              | ALTITUDE       | SPEED   | REMARKS                       |
| En Route Transition                        |                          |               |       |                                    |        |                           |                |         |                               |
| FORYU                                      | 291746.48N / 0811044.52W | Y             |       | IF                                 |        |                           | AT/ABOVE 13000 | AT 280K | FORYU.GTOUT1                  |
| NICCK                                      | 291116.48N / 0811010.16W | Y             | FB    | TF                                 | 175.58 | 06.50                     | 12000B14000    |         |                               |
| BGBBY                                      | 290243.13N / 0810631.08W | Y             | FB    | TF                                 | 159.44 | 09.11                     | AT/ABOVE 10000 | AT 250K |                               |
| GTOUT                                      | 285826.33N / 0810453.74W | Y             | FB    | TF                                 | 161.56 | 04.50                     | 9000B11000     |         |                               |
| En Route Transition                        |                          |               |       |                                    |        |                           |                |         |                               |
| LPERD                                      | 303609.18N / 0811652.16W | Y             |       | IF                                 |        |                           | FL300BFL340    |         | LPERD.GTOUT1                  |
| NOOMN                                      | 294228.05N / 0811251.29W | Y             | FB    | TF                                 | 176.27 | 53.67                     | AT/ABOVE FL190 |         |                               |
| FORYU                                      | 291746.48N / 0811044.52W | Y             | FB    | TF                                 | 175.71 | 24.70                     | AT/ABOVE 13000 | AT 280K |                               |
| NICCK                                      | 291116.48N / 0811010.16W | Y             | FB    | TF                                 | 175.58 | 06.50                     | 12000B14000    |         |                               |
| BGBBY                                      | 290243.13N / 0810631.08W | Y             | FB    | TF                                 | 159.44 | 09.11                     | AT/ABOVE 10000 | AT 250K |                               |
| GTOUT                                      | 285826.33N / 0810453.74W | Y             | FB    | TF                                 | 161.56 | 04.50                     | 9000B11000     |         |                               |
| Runway Transition                          |                          |               |       |                                    |        |                           |                |         |                               |
| GTOUT                                      | 285826.33N / 0810453.74W | Y             |       | IF                                 |        |                           | 9000B11000     |         |                               |
| TUGLE                                      | 285254.91N / 0810414.48W | Y             | FB    | TF                                 | 174.05 | 05.54                     |                |         |                               |
| BANYA                                      | 284622.62N / 0810926.04W | Y             | FO    | TF                                 | 214.99 | 07.96                     | AT 7000        | AT 210K |                               |
| KMCO:RWY 17L,RWY<br>17R,RWY 18L,RWY<br>18R |                          |               |       | VM                                 | 244.00 |                           |                |         |                               |