

FEDERAL AVIATION ADMINISTRATION
FLIGHT STANDARDS SERVICE
STANDARD TERMINAL ARRIVAL (STAR)

Bearings, headings, courses, tracks and radials are magnetic. Elevations and altitudes are in feet, MSL. Altitudes are minimum altitudes unless otherwise indicated.
Ceilings are in feet above airport elevation. Distances are in nautical miles. Visibilities are in statute miles or feet RVR unless otherwise indicated.

Arrival Name	Number	STAR Computer Code	Superseded Number	Dated	Effective Date
PRTZL (RNAV)	ONE	PRTZL.PRTZL1	NONE		21 MAR 2024

TRANSITION ROUTES:

Transition Name	Transition Computer Codes	From FIX/NAVAID	To FIX/NAVAID	Course	Distance	MEA	MOCA	MAA	Crossing Altitudes / Fixes
LYKOM	LYKOM.PRTZL1	LYKOM	LYKOM						
			WATSO	198.58	17.73	9000	4500		
			SEG VOR/DME	198.58	15.48	9000	3800		
			LEGGO	203.40	31.00	9000	3800		
			PRTZL	203.29	13.28	9000	3800		
SELINSGROVE	SEG.PRTZL1	SEG VOR/DME	SEG VOR/DME						
			LEGGO	203.40	31.00	9000	3800		
			PRTZL	203.29	13.28	9000	3800		
WLKES	WLKES.PRTZL1	WLKES	WLKES						
			DIANO	246.30	29.31	9000	5000		
			BLESS	257.43	09.56	9000	4200		
			SEG VOR/DME	257.31	22.92	9000	4100		
			LEGGO	203.40	31.00	9000	3800		
			PRTZL	203.29	13.28	9000	3800		

ARRIVAL ROUTE DESCRIPTION:

FROM PRTZL ON TRACK 203.26/23.92 TO HYPER.

LANDING RWY 1C/R: FROM HYPER ON TRACK 211.45/17.62 TO CROSS SIGBE AT 7000, THEN ON TRACK 188.92/8.65 TO CROSS MOWAT AT 5000, THEN ON TRACK 188.90/6.10 TO CROSS HUSEL AT 4000, THEN ON TRACK 189.88/15.37 TO YACKK, THEN ON TRACK 190.95/13.71 TO TICON, THEN ON TRACK 190.95. EXPECT RADAR VECTORS TO FINAL APPROACH COURSE.

LANDING RWY 1L, 30: FROM HYPER ON TRACK 227.52/27.41 TO CROSS CRAIN AT 6000, THEN ON TRACK 187.67/10.39 TO CROSS KUKSE AT 5000, THEN ON TRACK 191.11/12.77 TO ELISN, THEN ON TRACK 190.55/18.10 TO MIKEJ, THEN ON TRACK 190.55. EXPECT RADAR VECTORS TO FINAL APPROACH COURSE.

LANDING RWY 19L/C/R: FROM HYPER ON TRACK 232.92/8.92 TO CROSS PHATT AT 9000, THEN ON TRACK 230.00. EXPECT RADAR VECTORS TO FINAL APPROACH COURSE.

PBN REQUIREMENT NOTES:

RNAV 1 - DME/DME/IRU OR GPS

EQUIPMENT REQUIREMENT NOTES:

RADAR REQUIRED

PROCEDURAL DATA NOTES:

NOTE: FOR NON-JET AIRCRAFT CAPABLE OF 180 KIAS OR GREATER.



FEDERAL AVIATION ADMINISTRATION
FLIGHT STANDARDS SERVICE
STANDARD TERMINAL ARRIVAL (STAR)

Bearings, headings, courses, tracks and radials are magnetic. Elevations and altitudes are in feet, MSL. Altitudes are minimum altitudes unless otherwise indicated.
Ceilings are in feet above airport elevation. Distances are in nautical miles. Visibilities are in statute miles or feet RVR unless otherwise indicated.

Arrival Name	Number	STAR Computer Code	Superseded Number	Dated	Effective Date
PRTZL (RNAV)	ONE	PRTZL.PRTZL1	NONE		21 MAR 2024

FIXES AND/OR HOLDING PATTERNS:

CHART HOLDING AT HYPER: HOLD E, LT, 248.61 INBOUND, 4 NM LEGS, 210 KIAS.
CHART HOLDING AT PRTZL: HOLD NE, RT, 203.29 INBOUND, 4 NM LEGS, 210 KIAS.
CHART HOLDING AT SEG VOR/DME: HOLD N, RT, 198.58 INBOUND, 4 NM LEGS, 210 KIAS.

COMMUNICATIONS:

CHART: POTOMAC APP CON

AIRPORTS SERVED:

<u>AIRPORT ID</u>	<u>CITY</u>	<u>STATE</u>
KIAD	WASHINGTON	DC

LOST COMMUNICATIONS PREFERENCES:**REMARKS:****ADDITIONAL FLIGHT DATA:**

DME/DME ASSESSMENT: SAT (RNP 2.0)
MAG VAR: KIAD 10W/2000
CHART: P-40, R-4009
CHART: P-56A, P-56B
CHART: AT PHATT TERMINUS: KIAD LDG RWY 19C/L/R
CHART: AT MIKEJ TERMINUS: KIAD LDG RWY 1L
CHART: AT TICON TERMINUS: KIAD LDG RWY 1C/R

<u>FLIGHT INSPECTED BY:</u>	<i>Digitally signed by</i> ROBERT G HAMILTON	<u>ORGANIZATION:</u>	<u>DATE:</u>	Flight Inspected Signature:	
BOB S PRESSLER	Jan 04, 2024	FPO	01/03/2024		
<u>DEVELOPED BY:</u>	<i>Digitally signed by</i> ERIC N SUSKI	ESA PBN TEAM ONE LEAD	07/23/2023	Developed By Signature:	
David Johnson	Dec 04, 2023				
<u>APPROVED BY:</u>	<i>Digitally signed by</i> ERIC N SUSKI	AJV-A430		Approved By Signature:	
JOHNNIE BAKER	Dec 04, 2023				
<u>CHANGES:</u>					

QUALITY
14
CHECKED

FEDERAL AVIATION ADMINISTRATION
FLIGHT STANDARDS SERVICE
STANDARD TERMINAL ARRIVAL (STAR)

Bearings, headings, courses, tracks and radials are magnetic. Elevations and altitudes are in feet, MSL. Altitudes are minimum altitudes unless otherwise indicated.
Ceilings are in feet above airport elevation. Distances are in nautical miles. Visibilities are in statute miles or feet RVR unless otherwise indicated.

Arrival Name	Number	STAR Computer Code	Superseded Number	Dated	Effective Date
PRTZL (RNAV)	ONE	PRTZL.PRTZL1	NONE		21 MAR 2024

REASONS:

12/12/23: THIS IS AN UPDATED COPY OF THE FORM DEVELOPED ON 07/23/23.

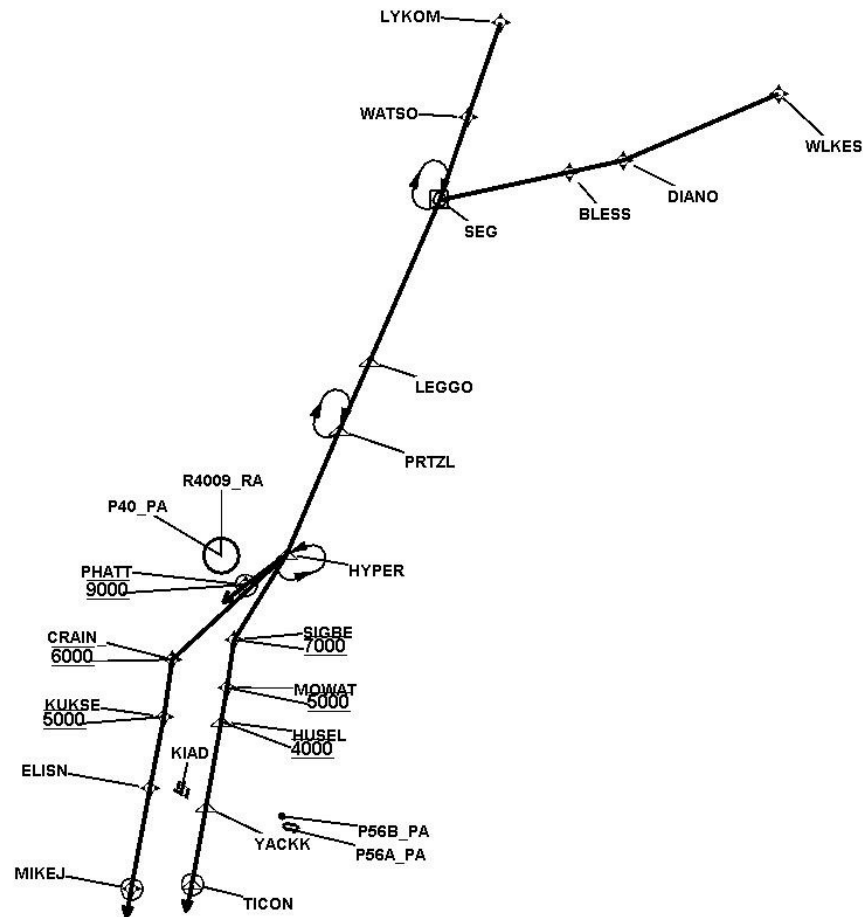
REMOVED NOTE: ARTCC will issue landing direction assignment (North or South) and Potomac TRACON will issue runway assignments.



FEDERAL AVIATION ADMINISTRATION
FLIGHT STANDARDS SERVICE
STANDARD TERMINAL ARRIVAL (STAR)

Bearings, headings, courses, tracks and radials are magnetic. Elevations and altitudes are in feet, MSL. Altitudes are minimum altitudes unless otherwise indicated.
Ceilings are in feet above airport elevation. Distances are in nautical miles. Visibilities are in statute miles or feet RVR unless otherwise indicated.

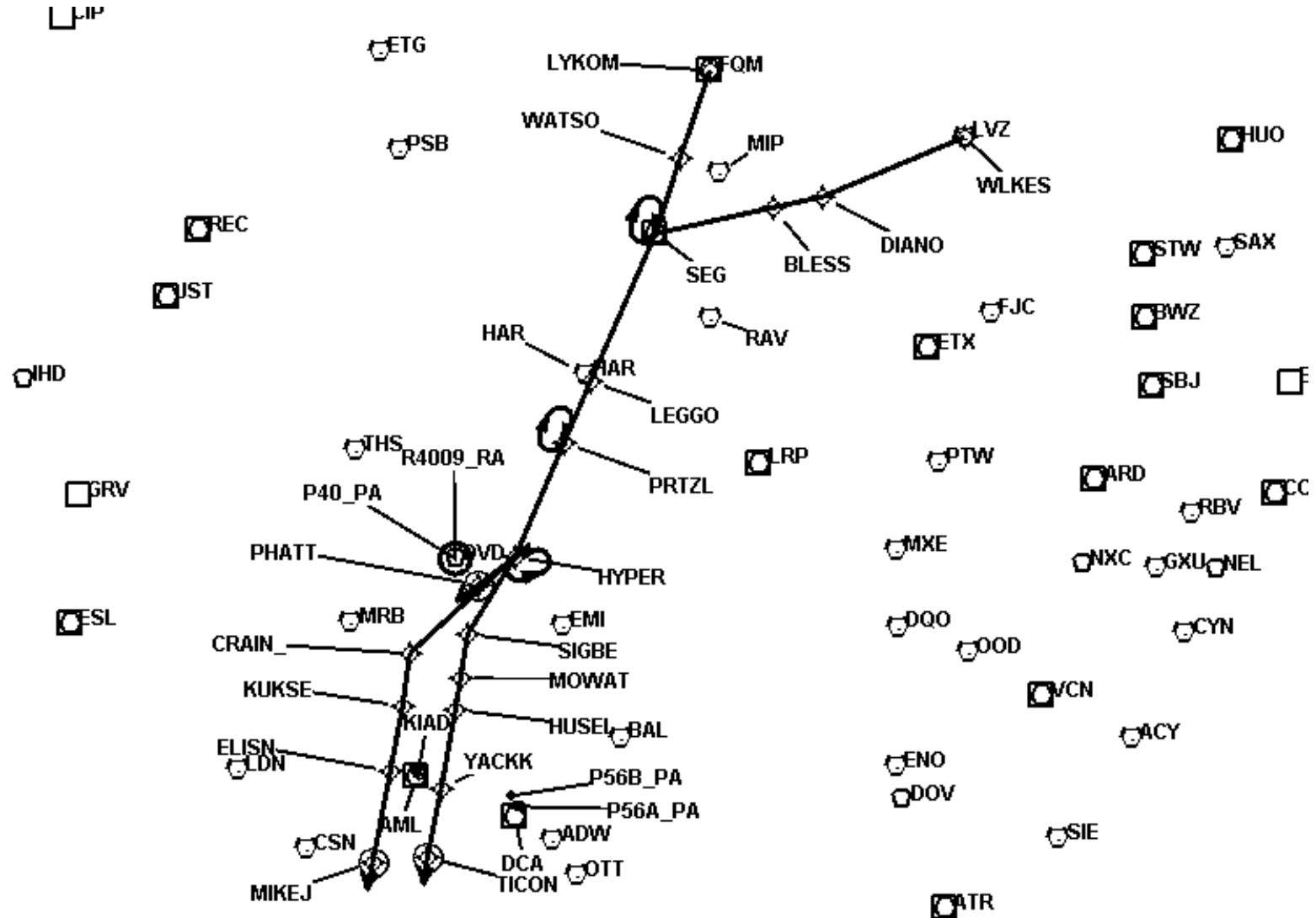
Arrival Name	Number	STAR Computer Code	Superseded Number	Dated	Effective Date
PRTZL (RNAV)	ONE	PRTZL.PRTZL1	NONE		21 MAR 2024
Graphic Depiction 1					



FEDERAL AVIATION ADMINISTRATION
FLIGHT STANDARDS SERVICE
STANDARD TERMINAL ARRIVAL (STAR)

Bearings, headings, courses, tracks and radials are magnetic. Elevations and altitudes are in feet, MSL. Altitudes are minimum altitudes unless otherwise indicated.
Ceilings are in feet above airport elevation. Distances are in nautical miles. Visibilities are in statute miles or feet RVR unless otherwise indicated.

Arrival Name	Number	STAR Computer Code	Superseded Number	Dated	Effective Date
PRTZL (RNAV)	ONE	PRTZL.PRTZL1	NONE		21 MAR 2024
Graphic Depiction 2					



FEDERAL AVIATION ADMINISTRATION
FLIGHT STANDARDS SERVICE
STAR (DATA RECORD)

Arrival Name PRTZL (RNAV)	Number ONE		STAR Computer Code PRTZL.PRTZL1		Superseded Number NONE		Dated	Effective Date 21 MAR 2024	
<u>FIX/NAVAID</u>	<u>LAT/LONG</u>	<u>C</u>	<u>FO/FB</u>	<u>LEG TYPE</u>	<u>TC</u>	<u>DIST (NM)</u>	<u>ALTITUDE</u>	<u>SPEED</u>	<u>REMARKS</u>
En Route Transition									
LYKOM	412018.75N / 0764630.30W	Y		IF					LYKOM.PRTZL1
WATSO	410246.31N / 0765000.10W	Y	FB	TF	188.58	17.73			
SEG VOR/DME	404727.09N / 0765302.55W	Y	FB	TF	188.58	15.48			
LEGGO	401716.01N / 0770225.65W	Y	FB	TF	193.40	31.00			
PRTZL	400420.17N / 0770624.16W	Y	FB	TF	193.29	13.28			
En Route Transition									
SEG VOR/DME	404727.09N / 0765302.55W	Y		IF					SEG.PRTZL1
LEGGO	401716.01N / 0770225.65W	Y	FB	TF	193.40	31.00			
PRTZL	400420.17N / 0770624.16W	Y	FB	TF	193.29	13.28			
En Route Transition									
WLKES	411622.57N / 0754121.60W	Y		IF					WLKES.PRTZL1
DIANO	410001.99N / 0761333.78W	Y	FB	TF	236.30	29.31			
BLESS	405621.21N / 0762512.51W	Y	FB	TF	247.43	09.56			
SEG VOR/DME	404727.09N / 0765302.55W	Y	FB	TF	247.31	22.92			
LEGGO	401716.01N / 0770225.65W	Y	FB	TF	193.40	31.00			
PRTZL	400420.17N / 0770624.16W	Y	FB	TF	193.29	13.28			
Common Route									
PRTZL	400420.17N / 0770624.16W	Y		IF					PRTZL.PRTZL1
HYPER	394102.16N / 0771330.34W	Y	FB	TF	193.26	23.92			
Runway Transition									
HYPER	394102.16N / 0771330.34W	Y		IF					
SIGBE	392437.20N / 0772149.20W	Y	FB	TF	201.45	17.62	AT 7000		
MOWAT	391557.60N / 0772136.60W	Y	FB	TF	178.92	08.65	AT 5000		
HUSEL	390951.60N / 0772127.60W	Y	FB	TF	178.90	06.10	AT 4000		
YACKK	385428.80N / 0772125.20W	Y	FB	TF	179.88	15.37			

FEDERAL AVIATION ADMINISTRATION
FLIGHT STANDARDS SERVICE
STAR (DATA RECORD)

Arrival Name PRTZL (RNAV)		Number ONE		STAR Computer Code PRTZL.PRTZL1			Superseded Number NONE		Dated	Effective Date 21 MAR 2024
<u>FIX/NAVAID</u>	<u>LAT/LONG</u>	<u>C</u>	<u>FO/FB</u>	<u>LEG TYPE</u>	<u>TC</u>	<u>DIST (NM)</u>	<u>ALTITUDE</u>	<u>SPEED</u>	<u>REMARKS</u>	
TICON	384045.60N / 0772142.60W	Y	FO	TF	180.95	13.71				
KIAD:RWY 1C,RWY 1R				FM	180.95					
Runway Transition										
HYPER	394102.16N / 0771330.34W	Y		IF						
CRAIN	391914.47N / 0773501.25W	Y	FB	TF	217.52	27.41	AT 6000			
KUKSE	390850.86N / 0773428.65W	Y	FB	TF	177.67	10.39	AT 5000			
ELISN	385604.35N / 0773447.64W	Y	FB	TF	181.11	12.77				
MIKEJ	383757.45N / 0773500.92W	Y	FO	TF	180.55	18.10				
KIAD:RWY 1L,RWY 30				FM	180.55					
Runway Transition										
HYPER	394102.16N / 0771330.34W	Y		IF						
PHATT	393429.51N / 0772121.90W	Y	FO	TF	222.92	08.92	AT 9000			
KIAD:RWY 19C,RWY 19L,RWY 19R				FM	220.00					