

FEDERAL AVIATION ADMINISTRATION  
FLIGHT STANDARDS SERVICE  
STANDARD TERMINAL ARRIVAL (STAR)

Bearings, headings, courses, tracks and radials are magnetic. Elevations and altitudes are in feet, MSL. Altitudes are minimum altitudes unless otherwise indicated.  
Distances are in nautical miles (NM). Graphic depictions attached.

Arrival Name <b>RKSTR (RNAV)</b>	Number <b>TWO</b>	STAR Computer Code <b>PEHTY.RKSTR2</b>	Superseded Number <b>ONE</b>	Dated <b>02/25/2021</b>	Effective Date <b>19MAY2022</b>
-------------------------------------	----------------------	---	---------------------------------	----------------------------	------------------------------------

TRANSITION ROUTES:

Transition Name	Transition Computer Codes	From FIX/NAVAID	To FIX/NAVAID	Course	Distance	MEA	MOCA	MAA	Crossing Altitudes / Fixes
ELLDA	ELLDA.RKSTR2	ELLDA	ELLDA						
			JJEAN	311.38	23.59	FL240	9400		AT/ABOVE FL240
			PEHTY	311.21	36.00	14000	8500		BETWEEN 14000 AND FL190
HAHAA	HAHAA.RKSTR2	HAHAA	HAHAA						
			JAAGR	267.82	50.86	FL240	12500		AT/ABOVE FL240
			FLEAA	267.23	30.00	FL220	9200		BETWEEN FL220 AND FL260
			PEHTY	270.43	32.72	14000	8800		BETWEEN 14000 AND FL190
SQUIRE	SQUIRE.RKSTR2	SQUIRE	SQUIRE						
			VEDDR	244.96	49.37	FL240	9900		AT/ABOVE FL240
			FLEAA	244.39	44.50	FL220	9300		BETWEEN FL220 AND FL260
			PEHTY	270.43	32.72	14000	8800		BETWEEN 14000 AND FL190

ARRIVAL ROUTE DESCRIPTION:

FROM PEHTY ON TRACK 287.52/10.06 TO RKSTR.

LANDING RWY 1L: FROM RKSTR ON TRACK 251.53/10.30 TO CROSS LEEEW AT OR ABOVE 14000 AND AT 250 KIAS, THEN ON TRACK 251.41/19.69 TO CROSS JAIDE BETWEEN 10000 AND 13000, THEN ON TRACK 258.85/5.40 TO CROSS MAHNA AT OR ABOVE 9000, THEN ON TRACK 258.79/7.00 TO CROSS TUUTH BETWEEN 8000 AND 10000 AND AT 220 KIAS, THEN ON TRACK 306.45/7.02 TO CROSS TRREY AT OR ABOVE 7000 AND AT 210 KIAS. EXPECT ILS OR LOC RWY 1L APPROACH.

LANDING RWY 1R: FROM RKSTR ON TRACK 251.53/10.30 TO CROSS LEEEW AT OR ABOVE 14000 AND AT 250 KIAS, THEN ON TRACK 251.41/19.69 TO CROSS JAIDE BETWEEN 10000 AND 13000, THEN ON TRACK 258.85/5.40 TO CROSS MAHNA AT OR ABOVE 9000, THEN ON TRACK 258.79/7.00 TO CROSS TUUTH BETWEEN 8000 AND 10000 AND AT 220 KIAS, THEN ON TRACK 318.66/5.00 TO CROSS BUHLL AT 7000 AND AT 210 KIAS. EXPECT RNAV (GPS) RWY 1R APPROACH.

LANDING RWY 8L/R: FROM RKSTR ON TRACK 251.53/10.30 TO CROSS LEEEW AT OR ABOVE 14000 AND AT 250 KIAS, THEN ON TRACK 251.41/19.69 TO CROSS JAIDE BETWEEN 10000 AND 13000, THEN ON TRACK 258.85/5.40 TO CROSS MAHNA AT OR ABOVE 9000, THEN ON TRACK 258.79/7.00 TO CROSS TUUTH BETWEEN 8000 AND 10000 AND AT 220 KIAS, THEN ON TRACK 298.71/10.23 TO CROSS YAGGR AT 8000 AND AT 210 KIAS, THEN ON TRACK 004.58. EXPECT RADAR VECTORS TO FINAL APPROACH COURSE.

LANDING RWY 19L/R: FROM RKSTR ON TRACK 347.07/6.40 TO CROSS GROLL AT OR BELOW 11000, THEN ON TRACK 347.07/10.24 TO CROSS FEREL AT OR ABOVE 10000 AND AT 250 KIAS, THEN ON TRACK 305.53/6.38 TO CROSS JOVII AT 10000, THEN ON TRACK 261.72/10.25 TO CROSS FELAA BETWEEN 8500 AND 11000, THEN ON TRACK 240.41/9.76 TO CROSS FOOOF AT OR ABOVE 7000 AND AT 220 KIAS, THEN ON TRACK 240.30/3.00 TO NNEON, THEN ON TRACK 262.58/1.79 TO CROSS PPENN AT 6000 AND AT 210 KIAS, THEN ON TRACK 262.58. EXPECT RADAR VECTORS TO FINAL APPROACH COURSE.

LANDING RWY 26L: FROM RKSTR ON TRACK 296.54/11.66 TO CROSS HUXLY BETWEEN 10000 AND 13000 AND AT 250 KIAS, THEN ON TRACK 296.19/7.99 TO CROSS HAYLN AT OR BELOW 9000, THEN ON TRACK 290.22/4.13 TO CROSS PRINO AT 8000 AND AT 210 KIAS. EXPECT ILS OR LOC RWY 26L APPROACH.

LANDING RWY 26R: FROM RKSTR ON TRACK 296.54/11.66 TO CROSS HUXLY BETWEEN 10000 AND 13000 AND AT 250 KIAS, THEN ON TRACK 296.19/7.99 TO CROSS HAYLN AT OR BELOW 9000, THEN ON TRACK 291.55/4.28 TO CROSS FLYES AT 8000 AND AT 210 KIAS. EXPECT ILS OR LOC RWY 26R APPROACH.

PBN REQUIREMENT NOTES

RNAV 1 - DME/DME/IRU OR GPS

EQUIPMENT REQUIREMENT NOTES

RADAR REQUIRED



FEDERAL AVIATION ADMINISTRATION  
FLIGHT STANDARDS SERVICE  
STANDARD TERMINAL ARRIVAL (STAR)

Bearings, headings, courses, tracks and radials are magnetic. Elevations and altitudes are in feet, MSL. Altitudes are minimum altitudes unless otherwise indicated.  
Distances are in nautical miles (NM). Graphic depictions attached.

Arrival Name	Number	STAR Computer Code	Superseded Number	Dated	Effective Date
<b>RKSTR (RNAV)</b>	<b>TWO</b>	<b>PEHTY.RKSTR2</b>	<b>ONE</b>	<b>02/25/2021</b>	<b>19MAY2022</b>

PROCEDURAL DATA NOTES:

NOTE: JET AIRCRAFT ONLY.

FIXES AND/OR HOLDING PATTERNS:

CHART HOLDING AT FLEAA: HOLD E, LT, 267.23 INBOUND, 11 NM LEGS.  
CHART HOLDING AT JJEAN: HOLD SE, LT, 311.38 INBOUND, 11 NM LEGS.  
CHART HOLDING AT PEHTY: HOLD E, LT, 287.52 INBOUND, 10 NM LEGS.  
CHART HOLDING AT VEDDR: HOLD NE, RT, 244.96 INBOUND, 11 NM LEGS.  
CHART HOLDING AT JAAGR: HOLD E, LT, 267.82 INBOUND, 11 NM LEGS.

COMMUNICATIONS:

CHART: LAS APP CON.  
CHART: LAS TOWER.

AIRPORTS SERVED:

HARRY REID INTL, LAS VEGAS, NV (KLAS)

LOST COMMUNICATIONS PROCEDURE:

LANDING RUNWAY 8R: AT YAGGR EXECUTE RNAV (RNP) RWY 8R APPROACH, IF UNABLE, PROCEED VISUALLY TO INTERCEPT THE FINAL APPROACH COURSE; IF UNABLE, MAINTAIN 8000 PROCEED TO LAS VORTAC THEN MAINTAIN 7000 PROCEED TO BLD VORTAC AND EXECUTE ILS OR LOC RWY 26L APPROACH.

LANDING RUNWAY 19L: AT PPENN EXECUTE RNAV (RNP) RWY 19L APPROACH, IF UNABLE, PROCEED VISUALLY TO INTERCEPT THE FINAL APPROACH COURSE; IF UNABLE, PROCEED TO LAS VORTAC TO CROSS LAS AT 7000 THEN PROCEED TO BLD VORTAC AT 7000 AND EXECUTE ILS OR LOC RWY 26L APPROACH.

REMARKS:

FIX HAYLN UTILIZES 25 DEGREE BANK ANGLE.  
FIX TUUTH UTILIZES 20 KNOT TAILWIND COMPONENT.  
FIX MAHNA UTILIZES 23.36 KNOT TAILWIND COMPONENT.  
FIX PEHTY UTILIZES 40.66 KNOT TAILWIND COMPONENT.

ADDITIONAL FLIGHT DATA:

DME/DME ASSESSMENT: SAT (RNP 2.0)  
REFERENCE MAGNETIC VARIATION = KLAS 11E/2020  
CHART AT TRREY TERMINUS: KLAS LDG RWY 1L  
CHART AT BUHLL TERMINUS: KLAS LDG RWY 1R  
CHART AT YAGGR TERMINUS: KLAS LDG RWY 8L/R  
CHART AT PPENN TERMINUS: KLAS LDG RWY 19L/R  
CHART AT PRINO TERMINUS: KLAS LDG RWY 26L  
CHART AT FLYES TERMINUS: KLAS LDG RWY 26R



FEDERAL AVIATION ADMINISTRATION  
FLIGHT STANDARDS SERVICE  
STANDARD TERMINAL ARRIVAL (STAR)

Bearings, headings, courses, tracks and radials are magnetic. Elevations and altitudes are in feet, MSL. Altitudes are minimum altitudes unless otherwise indicated.  
Distances are in nautical miles (NM). Graphic depictions attached.

Arrival Name	Number	STAR Computer Code	Superseded Number	Dated	Effective Date
<b>RKSTR (RNAV)</b>	<b>TWO</b>	<b>PEHTY.RKSTR2</b>	<b>ONE</b>	<b>02/25/2021</b>	<b>19MAY2022</b>
<u>FLIGHT INSPECTED BY:</u>				Digitally signed by <b>ALLAN WILL</b> Mar 14, 2022	
DANIEL C FAVORITE		FIOG	12/01/2021	Signature Digitally signed by <b>ALLAN WILL</b> Mar 14, 2022	
Name		Organization	Date	Signature Digitally signed by <b>ALLAN WILL</b> Mar 14, 2022	
<u>DEVELOPED BY:</u>				Signature Digitally signed by <b>ALLAN WILL</b> Mar 14, 2022	
MARK PHIPPS, LAS METROPLEX MANAGER		DENVER ARTCC	9/18/2021	Signature Digitally signed by <b>ALLAN WILL</b> Mar 14, 2022	
Name		Organization	Date	Signature Digitally signed by <b>ALLAN WILL</b> Mar 14, 2022	
<u>APPROVED BY:</u>				Signature Digitally signed by <b>ALLAN WILL</b> Mar 14, 2022	
MARLON ROBINSON		AJV-A420		Signature	
Name		Organization	Date		

CHANGES:

1. ADDED NEW FIX, MAHNA, BETWEEN JAIDE AND TUUTH ON RW01L, RW01R, AND RW08L/R RUNWAY TRANSITIONS. ALTITUDE RESTRICTION AT MAHNA IS AT/ABOVE 9000.
2. CHANGED RESTRICTION AT HUXLY FROM AT/ABOVE 10000 TO BETWEEN 10000 AND 13000.
3. CHANGED RESTRICTION AT FELAA FROM AT/ABOVE 8500 TO BETWEEN 8500 AND 11000.
4. ADDED RESTRICTION AT HAYLN OF AT/BELOW 9000 ON RWY 26L/R TRANSITIONS.
5. CHANGED SPEED AT PEHTY FROM AT 280 KIAS TO AT 250 KIAS.
6. ADDED RESTRICTION AT JAIDE BETWEEN 10000 AND 13000.
7. PROCEDURAL DATA NOTES: CHANGED "TURBOJET AIRCRAFT ONLY" TO "JET AIRCRAFT ONLY".
8. PROCEDURAL DATA NOTES: COMBINED "RNAV-1" AND "DME/DME/IRU OR GPS REQUIRED" AND MOVED NOTE TO PBN REQUIREMENTS SECTION.
9. CHANGED PEHTY MOCA FROM 8900 TO 8800.
10. CHANGED RESTRICTION AT FOOOF FROM AT/ABOVE 7000 TO BETWEEN 7000 AND 8000.
11. ADDED MOCAS TO SEGMENTS ABOVE FL180 ALONG WITH A REMARK FOR THESE NOT TO CHART.
12. REMOVED FM LEG ON RWY 1R TRANSITION, CHANGED TEXT FROM "EXPECT RADAR VECTORS" TO "EXPECT RNAV (GPS) RWY 1R".

REASONS:

1. NEEDED TO SEGREGATE TRAFFIC ON THE STAR FROM SATELLITE AIRPORT TRAFFIC.
- 2-3. SEGREGATES FROM PROP ARRIVALS AND CONTAINS AIRCRAFT IN ARRIVAL SECTOR.
4. SEGREGATES AIRCRAFT FROM TRAFFIC ON RASLR SID.
5. MATCHES OTHER CORNER POST STAR RESTRICTIONS AT COMPARABLE LOCATIONS.
6. SEGREGATES FROM KHND DEPARTURES.
7. ATC REQUEST.
8. ATC REQUEST.
9. UPDATED BASED OFF TARGETS OBSTACLE DATA.
10. SEGREGATES ARRIVALS FROM DEPARTURES.
11. IAW AFS MEMO DATED 07/01/2021.



FEDERAL AVIATION ADMINISTRATION  
FLIGHT STANDARDS SERVICE  
STANDARD TERMINAL ARRIVAL (STAR)

Bearings, headings, courses, tracks and radials are magnetic. Elevations and altitudes are in feet, MSL. Altitudes are minimum altitudes unless otherwise indicated.  
Distances are in nautical miles (NM). Graphic depictions attached.

Arrival Name	Number	STAR Computer Code	Superseded Number	Dated	Effective Date
<b>RKSTR (RNAV)</b>	<b>TWO</b>	<b>PEHTY.RKSTR2</b>	<b>ONE</b>	<b>02/25/2021</b>	<b>19MAY2022</b>

12. ATC REQUEST.

01/18/22: THIS IS AN UPDATED COPY OF THE FORM DEVELOPED ON 09/18/21.

1. LOST COMMS: CHANGED FROM "LANDING RUNWAY 8R: AT YAGGR EXECUTE RNAV (RNP) RWY 8R APPROACH, IF UNABLE, PROCEED VISUALLY VIA THE LAST TRACK TO INTERCEPT THE FINAL APPROACH COURSE; IF UNABLE, MAINTAIN 7000 DIRECT LAS VORTAC THEN DIRECT BLD VORTAC AND EXECUTE ILS OR LOC RWY 26L APPROACH" TO "LANDING RUNWAY 8R: AT YAGGR EXECUTE RNAV (RNP) RWY 8R APPROACH, IF UNABLE, PROCEED VISUALLY TO INTERCEPT THE FINAL APPROACH COURSE; IF UNABLE, PROCEED TO LAS VORTAC TO CROSS LAS AT 8000 THEN DESCEND TO 7000 AND PROCEED TO BLD VORTAC AT 7000 AND EXECUTE ILS OR LOC RWY 26L APPROACH" - IAW 8260.19, PARA 4-5-2o(4). PRB RECOMMENDATION: CURRENT VERBIAGE COULD BE MISTAKEN FOR CODED ROUTE.

2. LOST COMMS: CHANGED FROM "LANDING RUNWAY 19L: AT PPENN EXECUTE RNAV (RNP) RWY 19L APPROACH, IF UNABLE, PROCEED VISUALLY VIA THE LAST TRACK TO INTERCEPT THE FINAL APPROACH COURSE; IF UNABLE, MAINTAIN 7000 PROCEED DIRECT LAS VORTAC THEN DIRECT BLD VORTAC AND EXECUTE ILS OR LOC RWY 26L APPROACH" TO "LANDING RUNWAY 19L: AT PPENN EXECUTE RNAV (RNP) RWY 19L APPROACH, IF UNABLE, PROCEED VISUALLY TO INTERCEPT THE FINAL APPROACH COURSE; IF UNABLE, PROCEED TO LAS VORTAC TO CROSS LAS AT 7000 THEN PROCEED TO BLD VORTAC AT 7000 AND EXECUTE ILS OR LOC RWY 26L APPROACH" - IAW 8260.19, PARA 4-5-2o(4). PRB RECOMMENDATION: CURRENT VERBIAGE COULD BE MISTAKEN FOR CODED ROUTE.

3. REMARKS: DELETE MEAS FL190 NEEDED TO MITIGATE CRITICAL DMES AND INSURE ADEQUATE SIGNAL COVERAGE FOR DME/DME/IRU NAVIGATION - PRB RECOMMENDATION TO LOWER MEAS - LOWER DME ANALYSIS WILL BE ADDRESSED ON NEXT AMENDMENT.

4. REMARKS: DELETED DO NOT CHART MOCAS ABOVE FL180 - STAR MOCAS MUST BE CHARTED IAW 8260.19I PARA 4-5-12b(8).

5. EQUIPMENT REQUIREMENT NOTES: CHANGED RADAR REQUIRED TO NOTE: RADAR REQUIRED FOR NON-GPS EQUIPPED AIRCRAFT - IAW 8260.19 PARA 4-5-3F.

03/11/22: THIS IS AN UPDATED COPY OF THE FORM DEVELOPED ON 09/18/21.

1. LOST COMMS: LANDING RUNWAY 8R: AT YAGGR EXECUTE RNAV (RNP) RWY 8R APPROACH, IF UNABLE, PROCEED VISUALLY TO INTERCEPT THE FINAL APPROACH COURSE; IF UNABLE, MAINTAIN 8000 PROCEED TO LAS VORTAC AT 8000 THEN PROCEED TO BLD VORTAC AT 7000 AND EXECUTE ILS OR LOC RWY 26L APPROACH" TO "LANDING RUNWAY 8R: AT YAGGR EXECUTE RNAV (RNP) RWY 8R APPROACH, IF UNABLE, PROCEED VISUALLY TO INTERCEPT THE FINAL APPROACH COURSE; IF UNABLE, MAINTAIN 8000 PROCEED TO LAS VORTAC THEN MAINTAIN 7000 PROCEED TO BLD VORTAC AND EXECUTE ILS OR LOC RWY 26L APPROACH" - AFS REQUEST.

2. LOST COMMS: DELETED INSTRUCTIONS FOR RWYS 1L/R AND 26L/R - AFS REQUEST; IAW 8260.19I, PARA 4-5-3.

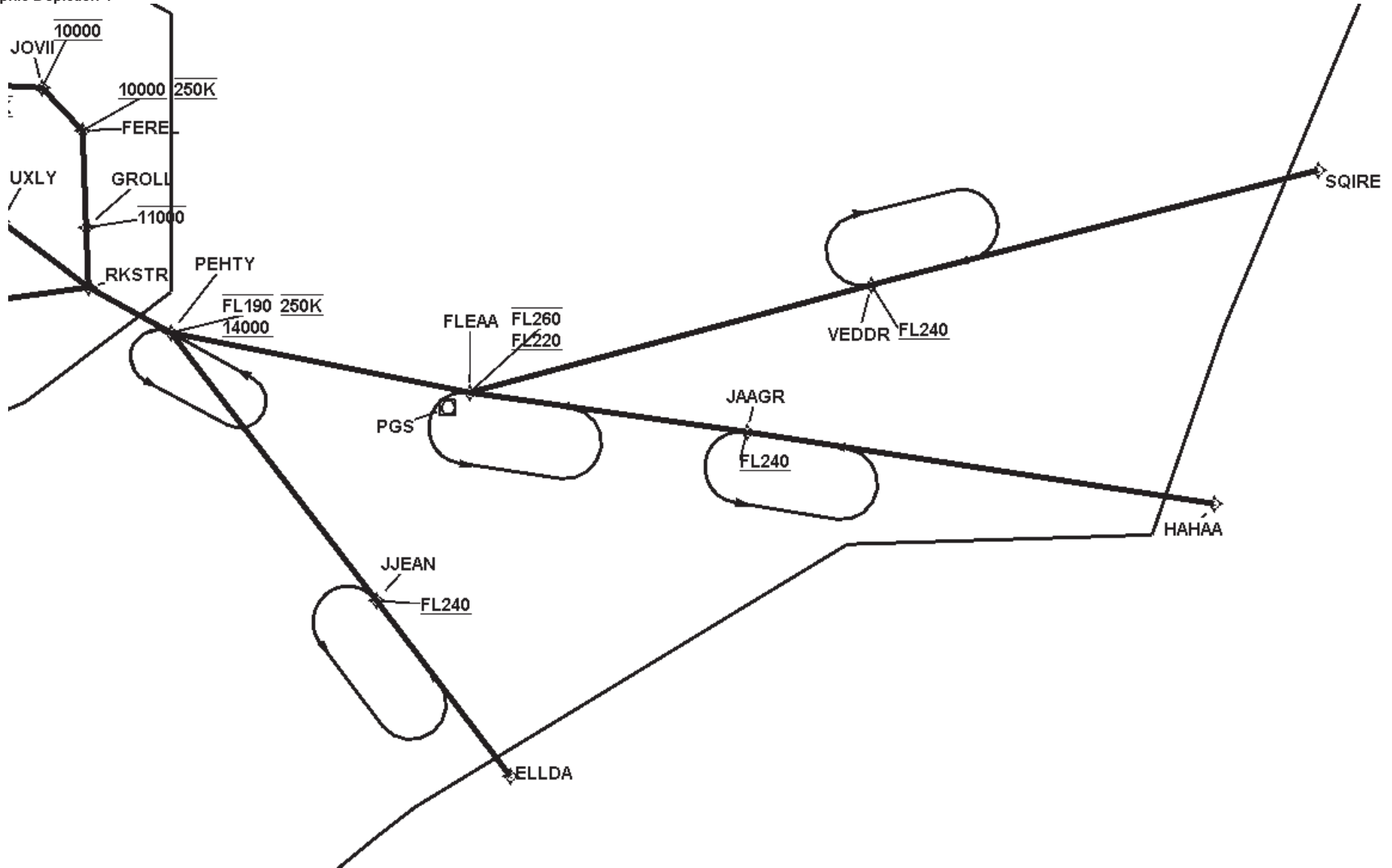
QUALITY  
14  
CHECKED

FEDERAL AVIATION ADMINISTRATION  
FLIGHT STANDARDS SERVICE  
STANDARD TERMINAL ARRIVAL (STAR)

Bearings, headings, courses, tracks and radials are magnetic. Elevations and altitudes are in feet, MSL. Altitudes are minimum altitudes unless otherwise indicated.  
Distances are in nautical miles (NM). Graphic depictions attached.

Arrival Name	Number	STAR Computer Code	Superseded Number	Dated	Effective Date
RKSTR (RNAV)	TWO	PEHTY.RKSTR2	ONE	02/25/2021	19MAY2022

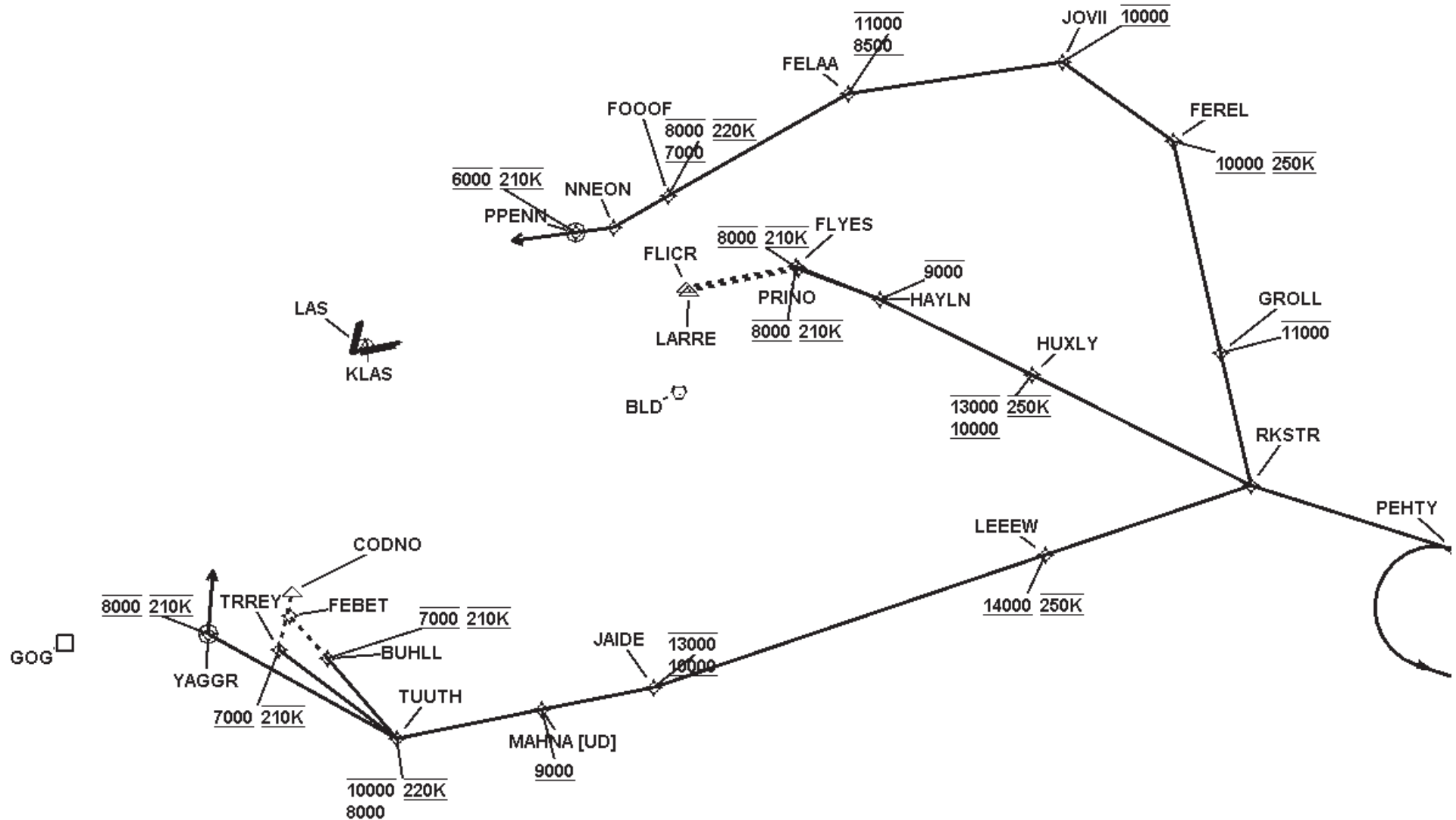
Graphic Depiction 1



FEDERAL AVIATION ADMINISTRATION  
FLIGHT STANDARDS SERVICE  
STANDARD TERMINAL ARRIVAL (STAR)

Bearings, headings, courses, tracks and radials are magnetic. Elevations and altitudes are in feet, MSL. Altitudes are minimum altitudes unless otherwise indicated.  
Distances are in nautical miles (NM). Graphic depictions attached.

Arrival Name	Number	STAR Computer Code	Superseded Number	Dated	Effective Date
RKSTR (RNAV)	TWO	PEHTY.RKSTR2	ONE	02/25/2021	19MAY2022
Graphic Depiction 2					



FEDERAL AVIATION ADMINISTRATION  
FLIGHT STANDARDS SERVICE  
STAR (DATA RECORD)

Arrival Name RKSTR (RNAV)		Number TWO		STAR Computer Code PEHTY.RKSTR2		Superseded Number ONE		Dated 02/25/2021	Effective Date 19MAY2022
FIX/NAVAID	LAT/LONG	C	FO/FB	LEG TYPE	TC	DIST (NM)	ALTITUDE	SPEED	REMARKS
En Route Transition									
ELLDA	345822.12N / 1132429.63W	Y		IF					ELLDA.RKSTR2
JJEAN	351703.90N / 1134205.01W	Y	FB	TF	322.38	23.59	AT/ABOVE FL240		
PEHTY	354530.55N / 1140911.11W	Y	FB	TF	322.21	36.00	14000BFL190	AT 250K	
En Route Transition									
HAHAA	352721.83N / 1115143.96W	Y		IF					HAHAA.RKSTR2
JAAGR	353454.90N / 1125320.97W	Y	FB	TF	278.82	50.86	AT/ABOVE FL240		
FLEAA	353907.31N / 1132946.63W	Y	FB	TF	278.23	30.00	FL220BFL260		
PEHTY	354530.55N / 1140911.11W	Y	FB	TF	281.43	32.72	14000BFL190	AT 250K	
En Route Transition									
SQUIRE	360247.78N / 1113801.41W	Y		IF					SQUIRE.RKSTR2
VEDDR	355033.69N / 1123656.11W	Y	FB	TF	255.96	49.37	AT/ABOVE FL240		
FLEAA	353907.31N / 1132946.63W	Y	FB	TF	255.39	44.50	FL220BFL260		
PEHTY	354530.55N / 1140911.11W	Y	FB	TF	281.43	32.72	14000BFL190	AT 250K	
Common Route									
PEHTY	354530.55N / 1140911.11W	Y		IF			14000BFL190	AT 250K	PEHTY.RKSTR2
RKSTR	355018.66N / 1142003.23W	Y	FB	TF	298.52	10.06			
Runway Transition									
RKSTR	355018.66N / 1142003.23W	Y		IF					
LEEEW	354857.56N / 1143236.66W	Y	FB	TF	262.53	10.30	AT/ABOVE 14000	AT 250K	
JAIDE	354618.84N / 1145636.11W	Y	FB	TF	262.41	19.69	10000B13000		
MAHNA	354617.83N / 1150314.27W	Y	FB	TF	269.85	05.40	AT/ABOVE 9000		
TUUTH	354615.97N / 1151150.40W	Y	FB	TF	269.79	07.00	8000B10000	AT 220K	
TRREY	355126.54N / 1151740.79W	Y	FB	TF	317.45	07.02	AT/ABOVE 7000	AT 210K	
KLAS:RWY 1L									

FEDERAL AVIATION ADMINISTRATION  
FLIGHT STANDARDS SERVICE  
STAR (DATA RECORD)

Arrival Name RKSTR (RNAV)		Number TWO		STAR Computer Code PEHTY.RKSTR2		Superseded Number ONE		Dated 02/25/2021	Effective Date 19MAY2022
FIX/NAVAID	LAT/LONG	C	FO/FB	LEG TYPE	TC	DIST (NM)	ALTITUDE	SPEED	REMARKS
Runway Transition									
RKSTR	355018.66N / 1142003.23W	Y		IF					
LEEEW	354857.56N / 1143236.66W	Y	FB	TF	262.53	10.30	AT/ABOVE 14000	AT 250K	
JAIDE	354618.84N / 1145636.11W	Y	FB	TF	262.41	19.69	10000B13000		
MAHNA	354617.83N / 1150314.27W	Y	FB	TF	269.85	05.40	AT/ABOVE 9000		
TUUTH	354615.97N / 1151150.40W	Y	FB	TF	269.79	07.00	8000B10000	AT 220K	
BUHLL	355035.23N / 1151456.78W	Y	FB	TF	329.66	05.00	AT 7000	AT 210K	
KLAS:RWY 1R									
Runway Transition									
RKSTR	355018.66N / 1142003.23W	Y		IF					
LEEEW	354857.56N / 1143236.66W	Y	FB	TF	262.53	10.30	AT/ABOVE 14000	AT 250K	
JAIDE	354618.84N / 1145636.11W	Y	FB	TF	262.41	19.69	10000B13000		
MAHNA	354617.83N / 1150314.27W	Y	FB	TF	269.85	05.40	AT/ABOVE 9000		
TUUTH	354615.97N / 1151150.40W	Y	FB	TF	269.79	07.00	8000B10000	AT 220K	
YAGGR	355248.54N / 1152131.70W	Y	FO	TF	309.71	10.23	AT 8000	AT 210K	
KLAS:RWY 8L,RWY 8R				FM	015.58				
Runway Transition									
RKSTR	355018.66N / 1142003.23W	Y		IF					
GROLL	355643.01N / 1142019.17W	Y	FB	TF	358.07	06.40	AT/BELOW 11000		
FEREL	360657.99N / 1142044.76W	Y	FB	TF	358.07	10.24	AT/ABOVE 10000	AT 250K	
JOVII	361136.28N / 1142610.39W	Y	FB	TF	316.53	06.38	AT 10000		
FELAA	361204.87N / 1143849.75W	Y	FB	TF	272.72	10.25	8500B11000		
FOOOF	360857.34N / 1145015.37W	Y	FB	TF	251.41	09.76	7000B8000	AT 220K	
NNEON	360759.50N / 1145345.85W	Y	FB	TF	251.30	03.00			
PPENN	360806.18N / 1145557.97W	Y	FO	TF	273.58	01.79	AT 6000	AT 210K	
KLAS:RWY 19L,RWY 19R				FM	273.58				



FEDERAL AVIATION ADMINISTRATION  
FLIGHT STANDARDS SERVICE  
STAR (DATA RECORD)

Arrival Name <b>RKSTR (RNAV)</b>	Number <b>TWO</b>	STAR Computer Code <b>PEHTY.RKSTR2</b>	Superseded Number <b>ONE</b>	Dated <b>02/25/2021</b>	Effective Date <b>19MAY2022</b>
-------------------------------------	----------------------	---	---------------------------------	----------------------------	------------------------------------

FIX/NAVAID	LAT/LONG	C	FO/FB	LEG TYPE	TC	DIST (NM)	ALTITUDE	SPEED	REMARKS
<b>Runway Transition</b>									
RKSTR	355018.66N / 1142003.23W	Y		IF					
HUXLY	355725.02N / 1143126.48W	Y	FB	TF	307.54	11.66	10000B13000	AT 250K	
HAYLN	360215.12N / 1143917.57W	Y	FB	TF	307.19	07.99	AT/BELOW 9000		
PRINO	360423.60N / 1144338.86W	Y	FB	TF	301.22	04.13	AT 8000	AT 210K	
<b>KLAS:RWY 26L</b>									
<b>Runway Transition</b>									
RKSTR	355018.66N / 1142003.23W	Y		IF					
HUXLY	355725.02N / 1143126.48W	Y	FB	TF	307.54	11.66	10000B13000	AT 250K	
HAYLN	360215.12N / 1143917.57W	Y	FB	TF	307.19	07.99	AT/BELOW 9000		
FLYES	360433.54N / 1144344.83W	Y	FB	TF	302.55	04.28	AT 8000	AT 210K	
<b>KLAS:RWY 26R</b>									