

OCEAN CITY, MARYLAND

AL-5284 (FAA)

20226

LOC I-OBX	APP CRS	Rwy Idg	4074
109.15	145°	TDZE	11
		Apt Elev	11

**OLD**

**LOC RWY 14**  
OCEAN CITY MUNI (OXB)

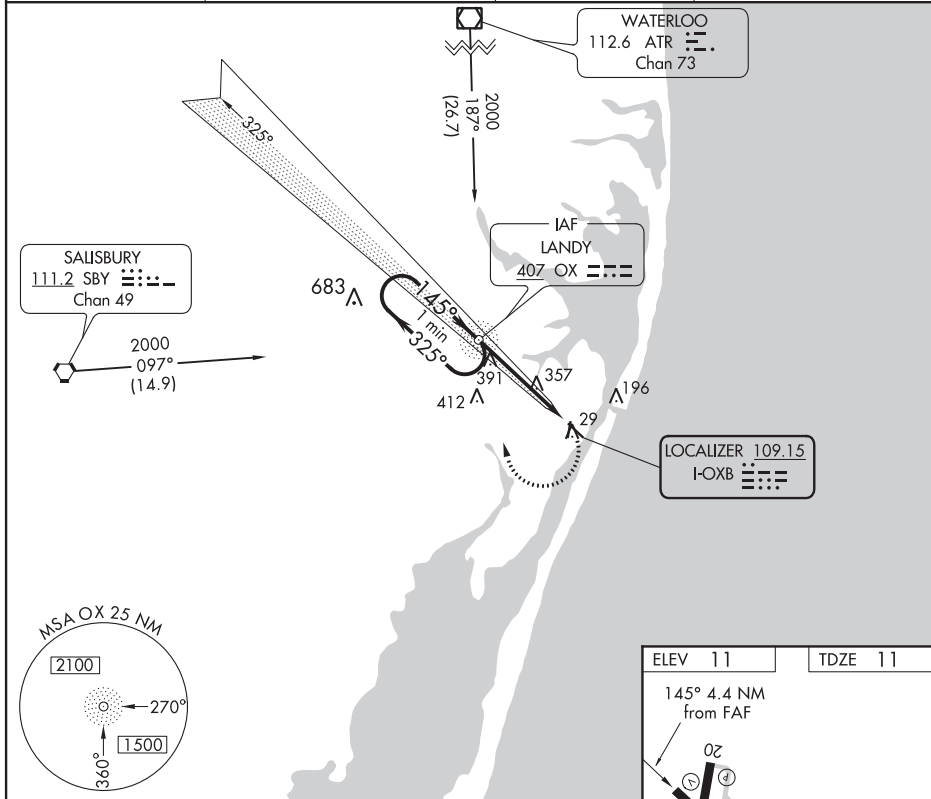
ADF required for procedure entry. ADF required.

NA Straight-in Rwy 14 NA at night. Circling Rwy 2, 14, 20 NA at night. When local altimeter setting not received, use Salisbury altimeter setting and increase all MDAs 60 feet and visibility S-14 Cat B and Circling Cat B/C/D ¼ SM. Rwy 14 helicopter visibility reduction below 1 SM NA.

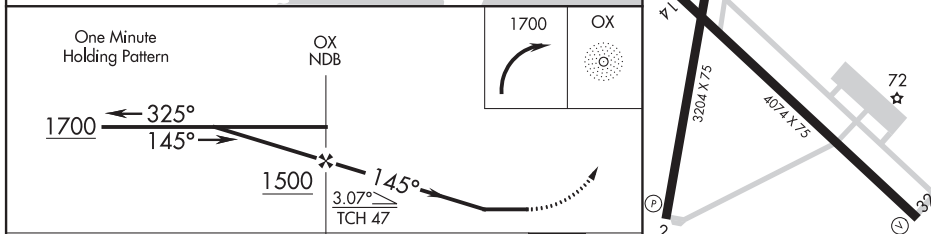
MISSED APPROACH:  
Climbing right turn to 1700 direct OX NDB and hold.

ASOS	PATUXENT APP CON *	CLNC DEL	UNICOM
119.025	127.95 314.0	121.75	123.05 (CTAF) 0

NE-3, 10 SEP 2020 to 08 OCT 2020



NE-3, 10 SEP 2020 to 08 OCT 2020



CATEGORY	A	B	C	D
S-14	700-1 689 (700-1)	700-2 689 (700-2)	700-2 689 (700-2)	700-2 689 (700-2)
CIRCLING	700-1 689 (700-1)	700-2 689 (700-2)	700-2 689 (700-2)	700-2 689 (700-2)

OCEAN CITY, MARYLAND  
Amdt 2B 13SEP18

38°19'N-75°07'W

OCEAN CITY MUNI (OXB)  
**LOC RWY 14**

ELEV	11	TDZE	11
145° 4.4 NM from FAF			
REIL Rwy 2 and 20			
MRL Rwy 2-20 and 14-32			
FAF to MAP	4.4 NM		
Knots	60	90	120
Min:Sec	4:24	2:56	2:12

KOXB  
OCEAN CITY MUNI  
OCEAN CITY  
MD  
NEW CIRCLING AREA  
1:100,000

