

FEDERAL AVIATION ADMINISTRATION  
FLIGHT STANDARDS SERVICE  
STANDARD TERMINAL ARRIVAL (STAR)

Bearings, headings, courses, tracks and radials are magnetic. Elevations and altitudes are in feet, MSL. Altitudes are minimum altitudes unless otherwise indicated.  
Ceilings are in feet above airport elevation. Distances are in nautical miles. Visibilities are in statute miles or feet RVR unless otherwise indicated.

Arrival Name	Number	STAR Computer Code	Superseded Number	Dated	Effective Date
ALYNA (RNAV)	THREE	ALYNA.ALYNA3	TWO	05/19/2022	3 Nov 2022

TRANSITION ROUTES:

Transition Name	Transition Computer Codes	From FIX/NAVAID	To FIX/NAVAID	Course	Distance	MEA	MOCA	MAA	Crossing Altitudes / Fixes
BEAUX	BEAUX.ALYNA3	BEAUX	BEAUX						
			SURFR	258.55	27.61	12000	1600		AT 14000
			ALYNA	270.75	29.43	6000	1600		
GRDON	GRDON.ALYNA3	GRDON	GRDON						
			TIMIE	198.72	22.34	6000	1600		AT 12000
			BURNE	201.11	08.13	6000	1600		
			ALYNA	252.12	14.42	6000	1600		
HIBAC	HIBAC.ALYNA3	HIBAC	HIBAC						
			BEAUX	256.99	22.64	14000	1600		
			SURFR	258.55	27.61	12000	1600		AT 14000
			ALYNA	270.75	29.43	6000	1600		
SURFR	SURFR.ALYNA3	SURFR	SURFR						AT 14000
			ALYNA	270.75	29.43	6000	1600		
WOPNR	WOPNR.ALYNA3	WOPNR	WOPNR						
			PRMUS	188.99	48.46	6000	1600		
			TIMIE	163.32	52.15	6000	1600		AT 12000
			BURNE	201.11	08.13	6000	1600		
			ALYNA	252.12	14.42	6000	1600		

ARRIVAL ROUTE DESCRIPTION:

LANDING KMCO RWY 17L/R, 18L/R: FROM ALYNA ON TRACK 269.96/6.72 TO CROSS BANYA AT 7000 AND AT 210 KIAS, THEN ON HEADING 246.00. EXPECT RADAR VECTORS TO FINAL APPROACH COURSE.

LANDING KMCO RWY 35L/R, 36L/R: FROM ALYNA ON TRACK 237.42/7.68 TO CROSS HIGGZ BETWEEN 10000 AND 12000 AND AT 250 KIAS, THEN ON TRACK 198.94/9.87 TO CROSS VOSSS AT OR ABOVE 8000 AND AT 230 KIAS, THEN ON TRACK 186.43/7.02 TO CROSS SUNDE AT OR ABOVE 6000, THEN ON TRACK 186.38/6.95 TO CROSS CUBAL AT 5000 AND AT 210 KIAS, THEN ON TRACK 186.38. EXPECT RADAR VECTORS TO FINAL APPROACH COURSE.

LANDING KLEE/KSFB/KISM/KORL: FROM ALYNA ON TRACK 262.78/6.78 TO CROSS BUDLE AT 6000, THEN ON HEADING 262.78. EXPECT RADAR VECTORS TO FINAL APPROACH COURSE.

PBN REQUIREMENT NOTES:

RNAV 1 - DME/DME/IRU OR GPS

EQUIPMENT REQUIREMENT NOTES:

RADAR REQUIRED



FEDERAL AVIATION ADMINISTRATION  
FLIGHT STANDARDS SERVICE  
STANDARD TERMINAL ARRIVAL (STAR)

Bearings, headings, courses, tracks and radials are magnetic. Elevations and altitudes are in feet, MSL. Altitudes are minimum altitudes unless otherwise indicated.  
Ceilings are in feet above airport elevation. Distances are in nautical miles. Visibilities are in statute miles or feet RVR unless otherwise indicated.

Arrival Name	Number	STAR Computer Code	Superseded Number	Dated	Effective Date
ALYNA (RNAV)	THREE	ALYNA.ALYNA3	TWO	05/19/2022	3 Nov 2022

**PROCEDURAL DATA NOTES:**

NOTE: JET AND TURBOPROP AIRCRAFT ONLY

NOTE: DO NOT FILE WOPNR, BEAUX, GRDON OR SURFR TRANSITION - TO BE ASSIGNED BY ATC.

**FIXES AND/OR HOLDING PATTERNS:**

CHART HOLDING AT GRDON: HOLD N, RT, 198.72 INBOUND, 10 NM LEGS.

CHART HOLDING AT SURFR: HOLD E, LT, 258.55 INBOUND, 10 NM LEGS.

CHART HOLDING AT TIMIE: HOLD N, LT, 198.72 INBOUND, 10 NM LEGS.

CHART HATMA, FEDSA and HEWES.

**COMMUNICATIONS:**

CHART: ORLANDO APP CON

**AIRPORTS SERVED:**

<u>AIRPORT ID</u>	<u>CITY</u>	<u>STATE</u>
KMCO	ORLANDO	FL
KORL	ORLANDO	FL
KISM	ORLANDO	FL
KLEE	LEESBURG	FL
KSFB	ORLANDO	FL

**LOST COMMUNICATIONS PREFERENCES:****REMARKS:**

ENVIRONMENTAL REVIEW UNDER ORDER 1050.1 (LATEST EDITION) AND THE NOISE SCREENING HAVE BEEN ACCOMPLISHED.

AMENDMENT DOES NOT SATISFY PERIODIC REVIEW REQUIREMENTS

**ADDITIONAL FLIGHT DATA:**

DME/DME ASSESSMENT: SAT (RNP 2.0)

MAG VAR: KMCO 06W/2015.

CHART AT BUDLE TERMINUS: LDG KLEE/KSFB/KISM/KORL

CHART AT BANYA TERMINUS: KMCO LDG RWY 17L/R, 18L/R

CHART AT CUBAL TERMINUS: KMCO LDG RWY 35L/R, 36L/R



FEDERAL AVIATION ADMINISTRATION  
FLIGHT STANDARDS SERVICE  
STANDARD TERMINAL ARRIVAL (STAR)

Bearings, headings, courses, tracks and radials are magnetic. Elevations and altitudes are in feet, MSL. Altitudes are minimum altitudes unless otherwise indicated.  
Ceilings are in feet above airport elevation. Distances are in nautical miles. Visibilities are in statute miles or feet RVR unless otherwise indicated.

Arrival Name	Number	STAR Computer Code	Superseded Number	Dated	Effective Date
<b>ALYNA (RNAV)</b>	<b>THREE</b>	<b>ALYNA.ALYNA3</b>	<b>TWO</b>	<b>05/19/2022</b> <i>Digitally signed by</i>	<b>3 Nov 2022</b>

**FLIGHT INSPECTED BY:**

Processed IAW Technical Support Group (AJF-17) Memo dated 7/7/21 Guidance for Procedural Changes Flight Inspected Signature:  
Requiring Flight Inspection/Validation

**ALLAN WILL**

Aug 11, 2022

*Digitally signed by***DEVELOPED BY:**

VICKI TURNER

DESIGN IMPLEMENTATION MANAGER, 06/27/2022  
AJV-22

Developed By Signature:

**ALLAN WILL**

Aug 11, 2022

*Digitally signed by***APPROVED BY:**

MARLON ROBINSON

AJV-A420

Approved By Signature:

**ALLAN WILL**

Aug 11, 2022

**CHANGES:**

1. REMOVED: NOTE: WOPNR, BEAUX, GRDON, and SURFR Transitions: ATC Assigned only.
2. ADDED: NOTE: DO NOT FILE WOPNR, BEAUX, GRDON OR SURFR TRANSITION - TO BE ASSIGNED BY ATC.
3. AMENDED: MOCA'S FROM 1300 TO 1600.
4. RETURNED HEWES TO FIXES AND/OR HOLDING PATTERNS.

**REASONS:**

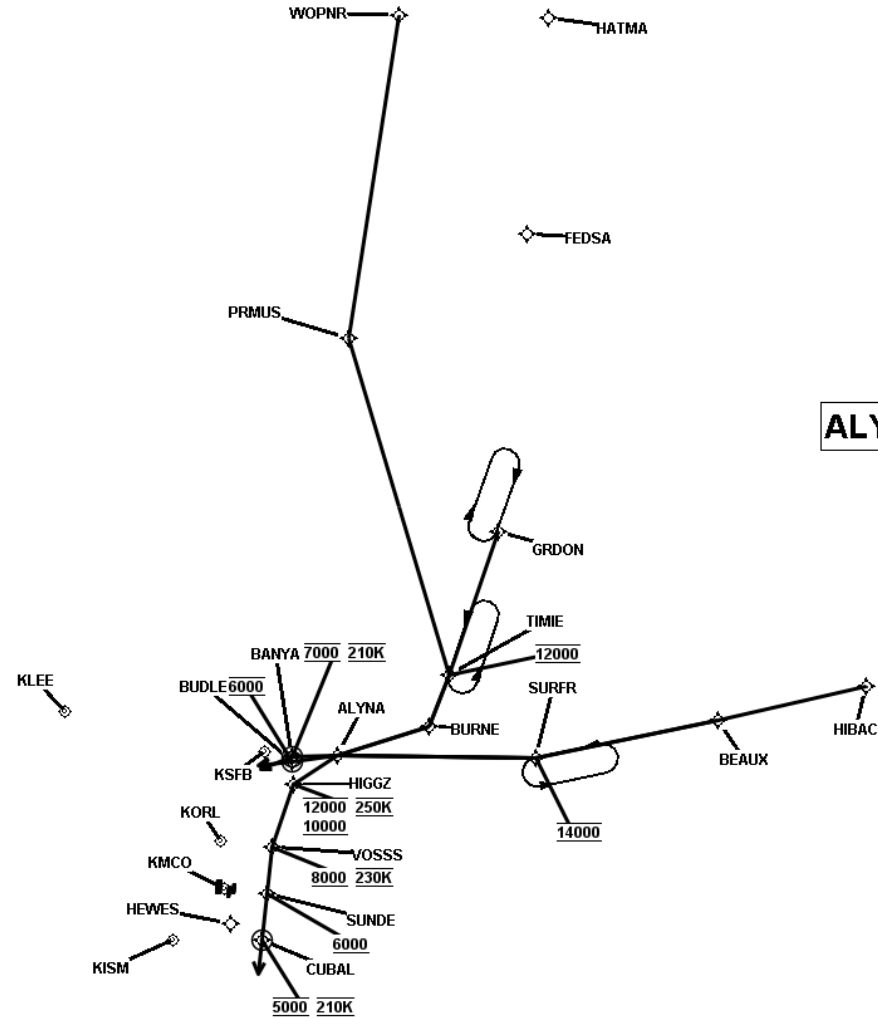
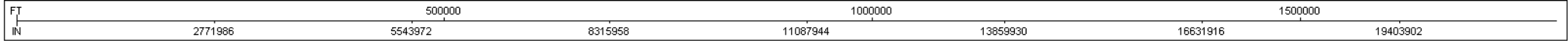
- 1-2. CHART NOTE STANDARDIZATION PER 19I.
3. INCORRECT VALUES INADVERTENTLY ENTERED.
4. ATC REQUEST TO RETAIN.



FEDERAL AVIATION ADMINISTRATION  
FLIGHT STANDARDS SERVICE  
STANDARD TERMINAL ARRIVAL (STAR)

Bearings, headings, courses, tracks and radials are magnetic. Elevations and altitudes are in feet, MSL. Altitudes are minimum altitudes unless otherwise indicated.  
Ceilings are in feet above airport elevation. Distances are in nautical miles. Visibilities are in statute miles or feet RVR unless otherwise indicated.

Arrival Name	Number	STAR Computer Code	Superseded Number	Dated	Effective Date
ALYNA (RNAV)	THREE	ALYNA.ALYNA3	TWO	05/19/2022	3 Nov 2022
Graphic Depiction 1					

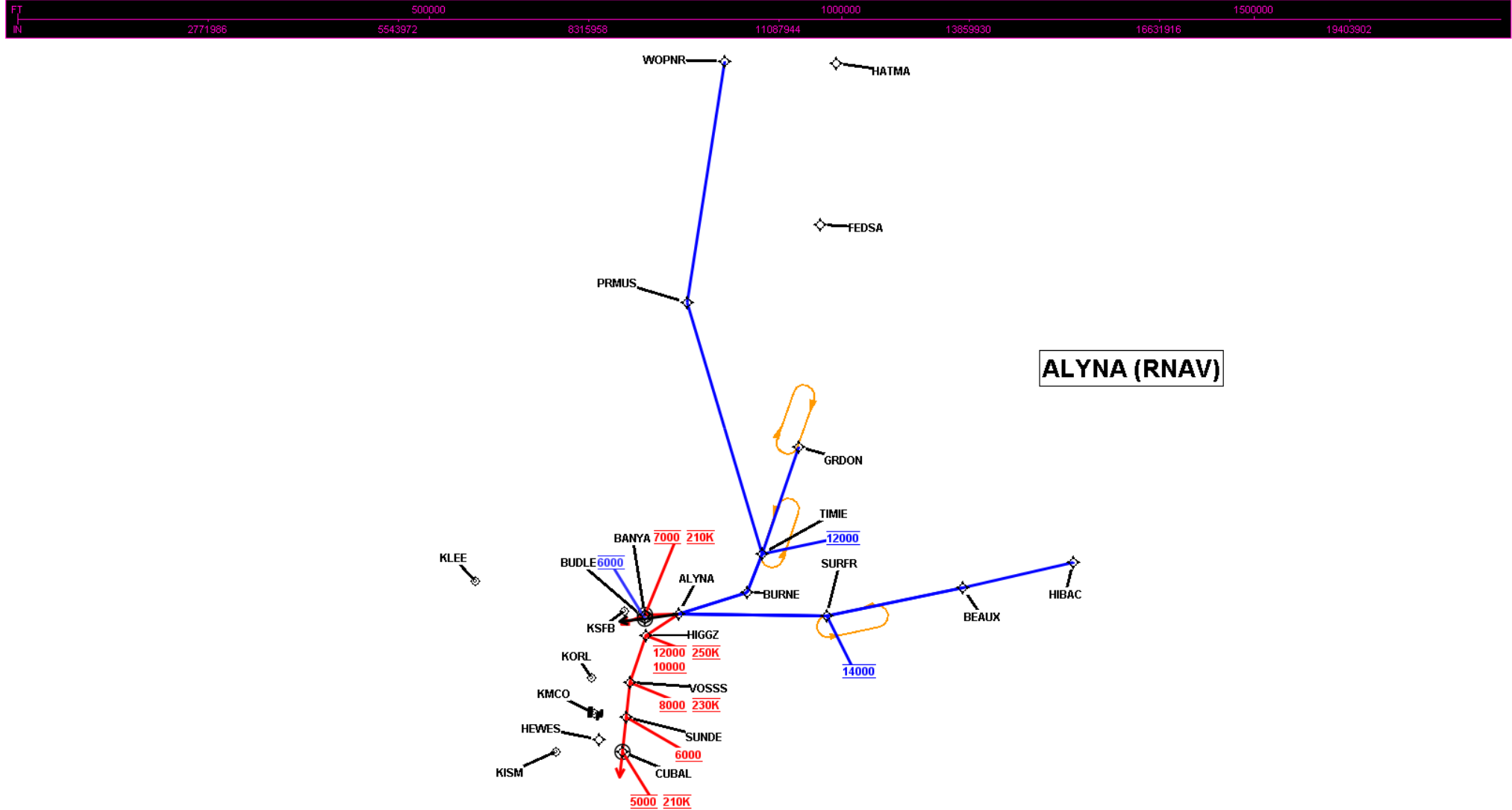


FEDERAL AVIATION ADMINISTRATION  
FLIGHT STANDARDS SERVICE  
STANDARD TERMINAL ARRIVAL (STAR)

Bearings, headings, courses, tracks and radials are magnetic. Elevations and altitudes are in feet, MSL. Altitudes are minimum altitudes unless otherwise indicated.  
Ceilings are in feet above airport elevation. Distances are in nautical miles. Visibilities are in statute miles or feet RVR unless otherwise indicated.

Arrival Name	Number	STAR Computer Code	Superseded Number	Dated	Effective Date
ALYNA (RNAV)	THREE	ALYNA.ALYNA3	TWO	05/19/2022	3 Nov 2022

## Graphic Depiction 2

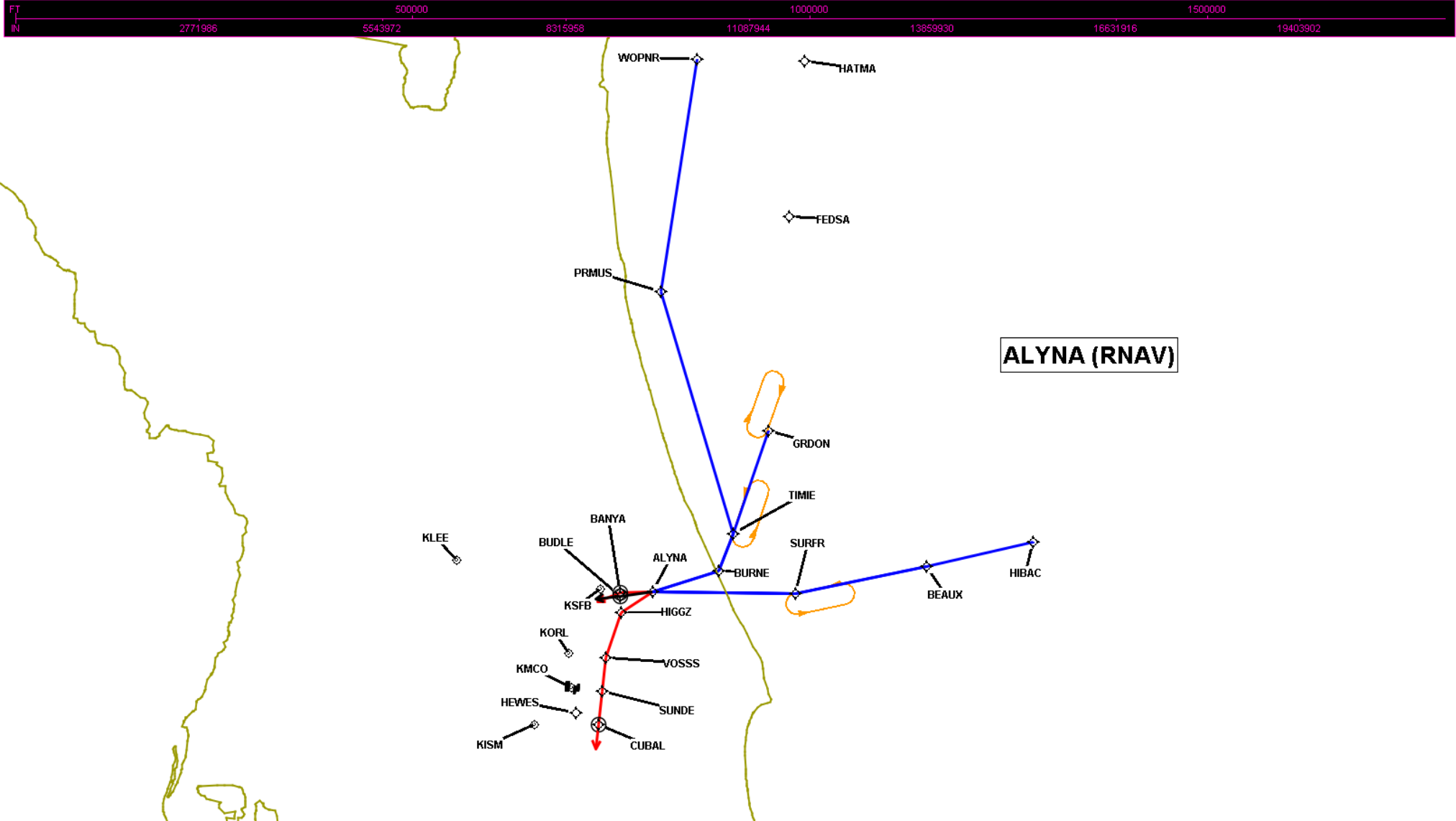


FEDERAL AVIATION ADMINISTRATION  
FLIGHT STANDARDS SERVICE  
STANDARD TERMINAL ARRIVAL (STAR)

Bearings, headings, courses, tracks and radials are magnetic. Elevations and altitudes are in feet, MSL. Altitudes are minimum altitudes unless otherwise indicated.  
Ceilings are in feet above airport elevation. Distances are in nautical miles. Visibilities are in statute miles or feet RVR unless otherwise indicated.

Arrival Name	Number	STAR Computer Code	Superseded Number	Dated	Effective Date
ALYNA (RNAV)	THREE	ALYNA.ALYNA3	TWO	05/19/2022	3 Nov 2022

Graphic Depiction 3



**FEDERAL AVIATION ADMINISTRATION  
FLIGHT STANDARDS SERVICE  
STAR (DATA RECORD)**

Arrival Name ALYNA (RNAV)		Number THREE		STAR Computer Code ALYNA.ALYNA3		Superseded Number TWO		Dated 05/19/2022	Effective Date 3 Nov 2022
FIX/NAVAID	LAT/LONG	C	FO/FB	LEG TYPE	TC	DIST (NM)	ALTITUDE	SPEED	REMARKS
En Route Transition									
BEAUX	285812.71N / 0795829.19W	Y		IF					BEAUX.ALYNA3
SURFR	284951.39N / 0802828.59W	Y	FB	TF	252.55	27.61	AT 14000		
ALYNA	284705.37N / 0810149.94W	Y	FB	TF	264.75	29.43			
En Route Transition									
GRDON	292240.70N / 0803847.91W	Y		IF					GRDON.ALYNA3
TIMIE	290049.74N / 0804424.64W	Y	FB	TF	192.72	22.34	AT 12000		
BURNE	285257.35N / 0804649.57W	Y	FB	TF	195.11	08.13			
ALYNA	284705.37N / 0810149.94W	Y	FB	TF	246.12	14.42			
En Route Transition									
HIBAC	290538.63N / 0793404.65W	Y		IF					HIBAC.ALYNA3
BEAUX	285812.71N / 0795829.19W	Y	FB	TF	250.99	22.64			
SURFR	284951.39N / 0802828.59W	Y	FB	TF	252.55	27.61	AT 14000		
ALYNA	284705.37N / 0810149.94W	Y	FB	TF	264.75	29.43			
En Route Transition									
SURFR	284951.39N / 0802828.59W	Y		IF			AT 14000		SURFR.ALYNA3
ALYNA	284705.37N / 0810149.94W	Y	FB	TF	264.75	29.43			
En Route Transition									
WOPNR	303736.03N / 0810426.44W	Y		IF					WOPNR.ALYNA3
PRMUS	294905.67N / 0810720.74W	Y	FB	TF	182.99	48.46			
TIMIE	290049.74N / 0804424.64W	Y	FB	TF	157.32	52.15	AT 12000		
BURNE	285257.35N / 0804649.57W	Y	FB	TF	195.11	08.13			
ALYNA	284705.37N / 0810149.94W	Y	FB	TF	246.12	14.42			

**FEDERAL AVIATION ADMINISTRATION  
FLIGHT STANDARDS SERVICE  
STAR (DATA RECORD)**

Arrival Name ALYNA (RNAV)		Number THREE		STAR Computer Code ALYNA.ALYNA3			Superseded Number TWO		Dated 05/19/2022	Effective Date 3 Nov 2022	
FIX/NAVAID	LAT/LONG	C	FO/FB	LEG TYPE	TC	DIST (NM)	ALTITUDE	SPEED	REMARKS		
Common Route											
ALYNA	284705.37N / 0810149.94W	Y		IF					ALYNA.ALYNA3		
BUDLE	284531.89N / 0810920.53W	Y	FO	TF	256.78	06.78	AT 6000				
KISM,KLEE,KORL, KSFB				VM	256.78						
Runway Transition											
ALYNA	284705.37N / 0810149.94W	Y		IF							
BANYA	284622.62N / 0810926.04W	Y	FO	TF	263.96	06.72	AT 7000	AT 210K			
KMCO:RWY 17L,RWY 17R,RWY 18L,RWY 18R				VM	240.00						
Runway Transition											
ALYNA	284705.37N / 0810149.94W	Y		IF							
HIGGZ	284216.96N / 0810839.80W	Y	FB	TF	231.42	07.68	10000B12000	AT 250K			
VOSSS	283237.98N / 0811110.45W	Y	FB	TF	192.94	09.87	AT/ABOVE 8000	AT 230K			
SUNDE	282535.58N / 0811114.05W	Y	FB	TF	180.43	07.02	AT/ABOVE 6000				
CUBAL	281837.67N / 0811117.18W	Y	FO	TF	180.38	06.95	AT 5000	AT 210K			
KMCO:RWY 35L,RWY 35R,RWY 36L,RWY 36R				FM	180.38						