

FEDERAL AVIATION ADMINISTRATION  
FLIGHT STANDARDS SERVICE  
STANDARD TERMINAL ARRIVAL (STAR)

Bearings, headings, courses, tracks and radials are magnetic. Elevations and altitudes are in feet, MSL. Altitudes are minimum altitudes unless otherwise indicated.  
Ceilings are in feet above airport elevation. Distances are in nautical miles. Visibilities are in statute miles or feet RVR unless otherwise indicated.

Arrival Name	Number	STAR Computer Code	Superseded Number	Dated	Effective Date
SIZLR (RNAV)	FOUR	SIZLR.SIZLR4	THREE	02/01/2018	12JUNE2025

TRANSITION ROUTES:

Transition Name	Transition Computer Codes	From FIX/NAVAID	To FIX/NAVAID	Course	Distance	MEA	MOCA	MAA	Crossing Altitudes / Fixes
CLASN	CLASN.SIZLR4	CLASN	CLASN						
			MURDY	119.13	30.60	FL190	10000		
			GLRNO	119.57	47.23	15000	10000		AT/ABOVE FL240
			SIZLR	114.97	19.58	15000	6100		BETWEEN FL200 AND FL230
GLRNO	GLRNO.SIZLR4	GLRNO	GLRNO						AT/ABOVE FL240
			SIZLR	114.97	19.58	15000	6100		BETWEEN FL200 AND FL230
MURDY	MURDY.SIZLR4	MURDY	MURDY						
			GLRNO	119.57	47.23	15000	10000		AT/ABOVE FL240
			SIZLR	114.97	19.58	15000	6100		BETWEEN FL200 AND FL230
OYVEY	OYVEY.SIZLR4	OYVEY	OYVEY						
			SOSHA	157.87	11.82	FL190	10200		
			KARNY	157.78	12.25	15000	10200		
			RABBL	133.04	16.15	15000	10200		
			GLRNO	133.10	28.74	15000	10200		AT/ABOVE FL240
			SIZLR	114.97	19.58	15000	6100		BETWEEN FL200 AND FL230
SOSHA	SOSHA.SIZLR4	SOSHA	SOSHA						
			KARNY	157.78	12.25	15000	10200		
			RABBL	133.04	16.15	15000	10200		
			GLRNO	133.10	28.74	15000	10200		AT/ABOVE FL240
			SIZLR	114.97	19.58	15000	6100		BETWEEN FL200 AND FL230

**ARRIVAL ROUTE DESCRIPTION:**

LANDING ALL AIRPORTS: FROM SIZLR ON TRACK 103.25/17.95 TO CROSS MXIMO AT OR BELOW FL190, THEN ON TRACK 103.20/19.82 TO CROSS HITOP AT 16000, THEN ON TRACK 106.08/15.69 TO CROSS CURKO AT 16000 AND AT 280 KIAS, THEN ON TRACK 106.81/9.35 TO CROSS GEBEE AT 15000, THEN ON TRACK 106.29/7.43 TO CROSS MORON AT 14000, THEN ON TRACK 094.72/11.91 TO CROSS FERNN AT 11000, THEN ON TRACK 123.51. EXPECT ASSIGNED INSTRUMENT APPROACH OR RADAR VECTORS TO FINAL APPROACH COURSE.

**PBN REQUIREMENT NOTES:**

RNAV 1 - DME/DME/IRU OR GPS

**EQUIPMENT REQUIREMENT NOTES:**

RADAR REQUIRED

FEDERAL AVIATION ADMINISTRATION  
FLIGHT STANDARDS SERVICE  
STANDARD TERMINAL ARRIVAL (STAR)

Bearings, headings, courses, tracks and radials are magnetic. Elevations and altitudes are in feet, MSL. Altitudes are minimum altitudes unless otherwise indicated.  
Ceilings are in feet above airport elevation. Distances are in nautical miles. Visibilities are in statute miles or feet RVR unless otherwise indicated.

Arrival Name	Number	STAR Computer Code	Superseded Number	Dated	Effective Date
<b>SIZLR (RNAV)</b>	<b>FOUR</b>	<b>SIZLR.SIZLR4</b>	<b>THREE</b>	<b>02/01/2018</b>	<b>12JUNE2025</b>

**PROCEDURAL DATA NOTES:**

NOTE: JET AND TURBOPROP AIRCRAFT ONLY

NOTE: MURDY, SOSHA, AND GLRNO TRANSITIONS DO NOT FILE-ATC ASSIGNED ONLY.

**FIXES AND/OR HOLDING PATTERNS:**

CHART HOLDING AT HITOP: HOLD W, RT, 103.20 INBOUND, 10 NM LEGS.

CHART: TRM VORTAC.

**COMMUNICATIONS:**

CHART: PALM SPRINGS INTL TOWER.

CHART: KUDD UNICOM.

CHART: KTRM UNICOM.

**AIRPORTS SERVED:**

<u>AIRPORT ID</u>	<u>CITY</u>	<u>STATE</u>
UDD	PALM SPRINGS	CA
TRM	PALM SPRINGS	CA
PSP	PALM SPRINGS	CA

**LOST COMMUNICATIONS PREFERENCES:**

LANDING PSP, TRM, UDD: PROCEED TO TRM VORTAC, THEN EXECUTE VOR APPROACH FOR DESTINATION AIRPORT.

**REMARKS:**

MEAS AT FL190 REQUIRED FOR DME/DME ASSESSMENT.

**ADDITIONAL FLIGHT DATA:**

DME/DME ASSESSMENT: SAT (RNP 2.0)

MAG VAR: KPSP 13E/1990

CHART AT FERNN TERMINUS: LDG PSP/TRM/UDD

**FLIGHT INSPECTED BY:**

JOSEPH R JAQUISH

**ORGANIZATION:**

AJF

**DATE:**

11/26/2024

Flight Inspected Signature:

Digitally signed by

**ALLAN WILL**

Dec 03, 2024

**DEVELOPED BY:**

RICHARD CAMPBELL

AJV-A423

08/16/2024

Developed By Signature:

Digitally signed by

**RICHARD E CAMPBELL**

Oct 08, 2024

**APPROVED BY:**

ALLAN WILL

AJV-A423  
MANAGER

Approved By Signature:

Digitally signed by

**ALLAN WILL**

Dec 03, 2024

FEDERAL AVIATION ADMINISTRATION  
FLIGHT STANDARDS SERVICE  
STANDARD TERMINAL ARRIVAL (STAR)

Bearings, headings, courses, tracks and radials are magnetic. Elevations and altitudes are in feet, MSL. Altitudes are minimum altitudes unless otherwise indicated.  
Ceilings are in feet above airport elevation. Distances are in nautical miles. Visibilities are in statute miles or feet RVR unless otherwise indicated.

Arrival Name	Number	STAR Computer Code	Superseded Number	Dated	Effective Date
<b>SIZLR (RNAV)</b>	<b>FOUR</b>	<b>SIZLR.SIZLR4</b>	<b>THREE</b>	<b>02/01/2018</b>	<b>12JUNE2025</b>

**CHANGES:**

1. REMOVED PSP VORTAC AND DEZZY WP.
2. ADDED CHART AT FERNN TERMINUS: LDG PSP/TRM/UDD.
3. REMOVED PZUKY WP AND BITTY WP.
4. ADDED ALTITUDE RESTRICTION AT HITOP WP OF AT 16000.
5. ADDED ALTITUDE RESTRICTION AT MXIMO WP OF AT OR BELOW FL190.
6. ESTABLISHED MURDY, SOSHA, AND GLRNO EN ROUTE TRANSITIONS WITH CHART NOTE: DO NOT FILE-ATC ASSIGNED ONLY.
7. ADDED NEW CURKO WP WITH ALTITUDE RESTRICTION OF AT 16000 AND SPEED RESTRICTION OF AT 280 KIAS.
8. ADDED NEW GEBEE WP WITH AN ALTITUDE RESTRICTION OF AT 15000.
9. ADDED A HOLDING PATTERN AT HITOP WP.
10. REMOVED RECOMMENDED NAVAID FROM 17.2 FORM.
11. CHANGED REFERENCE OF TURBOJET TO JET.
12. REMOVED K FROM ARPT IDENT ON 17.1 FORM.
13. REVISED LOST COMM.
14. REMOVED DO NOT CHART MOCAS.
15. REVISED ARRIVAL ROUTE DESCRIPTION.
16. MOVED RADAR REQUIRED FROM PROCEDURAL DATA NOTES TO EQUIPMENT REQUIREMENT NOTES.
17. MOVED RNAV 1 AND DME/DME/IRU OR GPS REQUIRED FROM PROCEDURAL DATA NOTES TO PBN REQUIREMENT NOTES.
18. ADJUSTED ALL MEAs AND MOCAs.

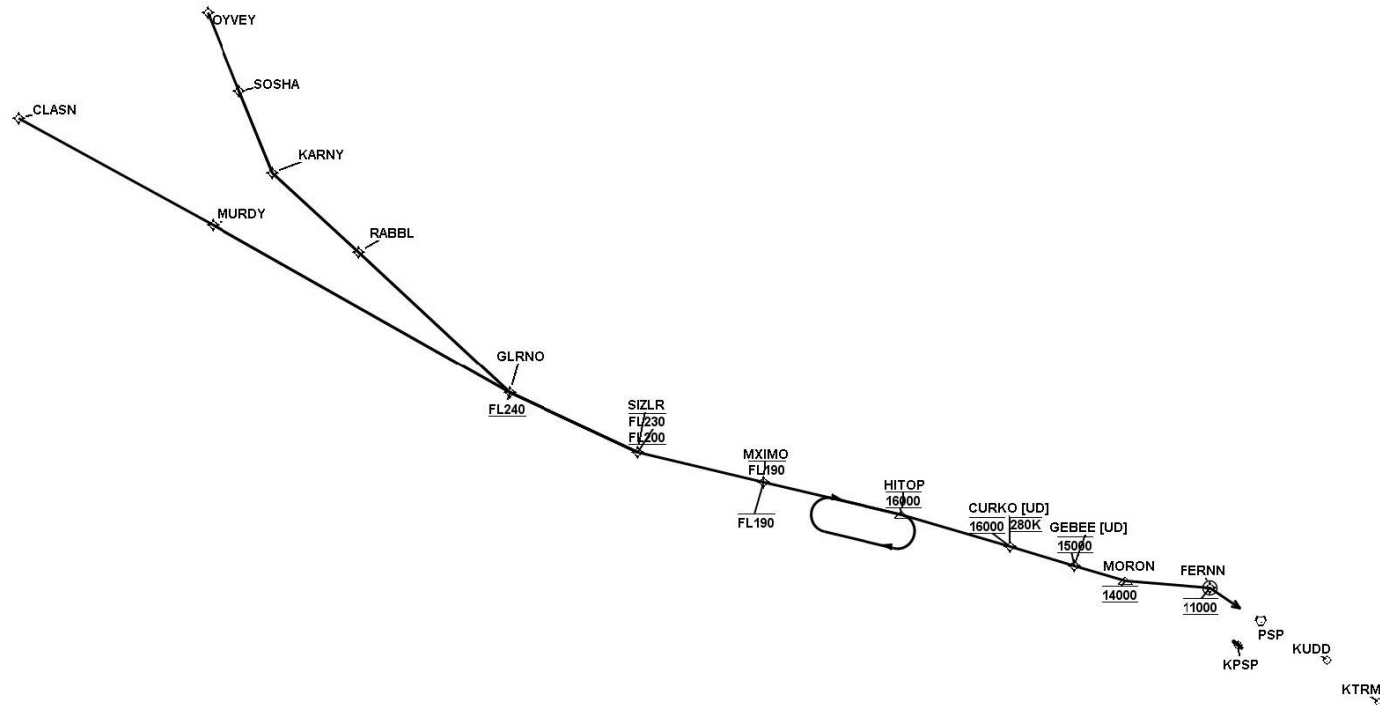
**REASONS:**

1. TO MATCH RNPS.
2. IAW FAAO 8260.19J 4-5-2 h. (2) STAR TERMINUS DATA.
- 3-8. ATC REQUEST FOR DATACOMM ROUTE COMPLIANCE.
- 9, 13. ATC REQUEST.
- 10, 12. NO LONGER DOCUMENTED.
11. IAW FAAO 8260.19J, 4-5-12D(3)(A).
14. IAW AFS MEMO DATED 07/01/2021.
15. IAW FAAO 8260.19J 4-5-12C.
- 16, 17. IAW FAAO 8260.19J DOCUMENTATION STANDARDS.
18. NEW DME/DME ASSESSMENT AND OBST EVAL.

FEDERAL AVIATION ADMINISTRATION  
FLIGHT STANDARDS SERVICE  
STANDARD TERMINAL ARRIVAL (STAR)

Bearings, headings, courses, tracks and radials are magnetic. Elevations and altitudes are in feet, MSL. Altitudes are minimum altitudes unless otherwise indicated.  
Ceilings are in feet above airport elevation. Distances are in nautical miles. Visibilities are in statute miles or feet RVR unless otherwise indicated.

Arrival Name	Number	STAR Computer Code	Superseded Number	Dated	Effective Date
SIZLR (RNAV)	FOUR	SIZLR.SIZLR4	THREE	02/01/2018	12JUNE2025
Graphic Depiction 1					



SIZLR (RNAV)

Generated 07/08/2024 11:02 AM by: TARGETS: 7.3.2; WGS84: 3.3.4; Common RS: 2.15.0; RNAV STAR RS: 2.14.0

Page 2 of 25

**FEDERAL AVIATION ADMINISTRATION  
FLIGHT STANDARDS SERVICE  
STAR (DATA RECORD)**

Arrival Name SIZLR (RNAV)		Number FOUR		STAR Computer Code SIZLR.SIZLR4			Superseded Number THREE		Dated 02/01/2018	Effective Date 12JUNE2025
FIX/NAVAID	LAT/LONG	C	FO/FB	LEG TYPE	TC	DIST (NM)	ALTITUDE	SPEED	REMARKS	
En Route Transition										
CLASN	353935.40N / 1193008.70W	Y		IF					CLASN.SIZLR4	
MURDY	351858.60N / 1190224.60W	Y	FB	TF	132.13	30.60				
GLRNO	344651.00N / 1182011.10W	Y	FB	TF	132.57	47.23	AT/ABOVE FL240			
SIZLR	343445.43N / 1180129.41W	Y	FB	TF	127.97	19.58	FL200BFL230			
En Route Transition										
GLRNO	344651.00N / 1182011.10W	Y		IF			AT/ABOVE FL240		GLRNO.SIZLR4	
SIZLR	343445.43N / 1180129.41W	Y	FB	TF	127.97	19.58	FL200BFL230			
En Route Transition										
MURDY	351858.60N / 1190224.60W	Y		IF					MURDY.SIZLR4	
GLRNO	344651.00N / 1182011.10W	Y	FB	TF	132.57	47.23	AT/ABOVE FL240			
SIZLR	343445.43N / 1180129.41W	Y	FB	TF	127.97	19.58	FL200BFL230			
En Route Transition										
OYVEY	354759.00N / 1185521.00W	Y		IF					OYVEY.SIZLR4	
SOSHA	353618.00N / 1185303.00W	Y	FB	TF	170.87	11.82				
KARNY	352411.50N / 1185039.00W	Y	FB	TF	170.78	12.25				
RABBL	351046.00N / 1183938.76W	Y	FB	TF	146.04	16.15				
GLRNO	344651.00N / 1182011.10W	Y	FB	TF	146.10	28.74	AT/ABOVE FL240			
SIZLR	343445.43N / 1180129.41W	Y	FB	TF	127.97	19.58	FL200BFL230			
En Route Transition										
SOSHA	353618.00N / 1185303.00W	Y		IF					SOSHA.SIZLR4	
KARNY	352411.50N / 1185039.00W	Y	FB	TF	170.78	12.25				
RABBL	351046.00N / 1183938.76W	Y	FB	TF	146.04	16.15				
GLRNO	344651.00N / 1182011.10W	Y	FB	TF	146.10	28.74	AT/ABOVE FL240			
SIZLR	343445.43N / 1180129.41W	Y	FB	TF	127.97	19.58	FL200BFL230			

FEDERAL AVIATION ADMINISTRATION  
FLIGHT STANDARDS SERVICE  
STAR (DATA RECORD)

Arrival Name SIZLR (RNAV)	Number FOUR		STAR Computer Code SIZLR.SIZLR4		Superseded Number THREE		Dated 02/01/2018	Effective Date 12JUNE2025	
<u>FIX/NAVAID</u>	<u>LAT/LONG</u>	<u>C</u>	<u>FO/FB</u>	<u>LEG TYPE</u>	<u>TC</u>	<u>DIST (NM)</u>	<u>ALTITUDE</u>	<u>SPEED</u>	<u>REMARKS</u>
Common Route									
SIZLR	343445.43N / 1180129.41W	Y		IF			FL200BFL230		SIZLR.SIZLR4
MXIMO	342646.60N / 1174201.29W	Y	FB	TF	116.25	17.95	AT/BELOW FL190		
HITOP	341758.70N / 1172033.18W	Y	FB	TF	116.20	19.82	AT 16000		
CURKO	341019.18N / 1170401.45W	Y	FB	TF	119.08	15.69	AT 16000	AT 280K	
GEBEE	340539.40N / 1165415.30W	Y	FB	TF	119.81	09.35	AT 15000		
MORON	340200.77N / 1164627.66W	Y	FB	TF	119.29	07.43	AT 14000		
FERNN	335822.14N / 1163249.39W	Y	FO	TF	107.72	11.91	AT 11000		
KPSP,KTRM,KUDD				FM	136.51				