

FEDERAL AVIATION ADMINISTRATION
FLIGHT STANDARDS SERVICE
STANDARD TERMINAL ARRIVAL (STAR)

Bearings, headings, courses, tracks and radials are magnetic. Elevations and altitudes are in feet, MSL. Altitudes are minimum altitudes unless otherwise indicated.
Distances are in nautical miles (NM). Graphic depictions attached.

Arrival Name	Number	STAR Computer Code	Superseded Number	Dated	Effective Date
SADYL (RNAV)	FOUR	PELYT.SADYL4	THREE	12/07/2017	10 SEP 20

TRANSITION ROUTES:

Transition Name	Transition Computer Codes	From FIX/NAVAID	To FIX/NAVAID	Course	Distance	MEA	MOCA	MAA	Crossing Altitudes / Fixes
NEERO	NEERO.SADYL4	NEERO	NEERO						
			PRNCS	000.97	38.68	15000	10300		
			PELYT	037.66	32.00	15000	8700		AT/ABOVE FL210
PRNCS	PRNCS.SADYL4	PRNCS	PRNCS						
			PELYT	037.66	32.00	15000	8700		AT/ABOVE FL210

ARRIVAL ROUTE DESCRIPTION:

FROM PELYT ON TRACK 038.28/25.35 TO CROSS SADYL AT OR ABOVE 14000, THEN ON TRACK 038.08/13.29 TO CROSS MRFREE AT OR ABOVE 10100 AND AT 250 KIAS.

LANDING RWY 10L/R: FROM MRFREE ON TRACK 003.24/11.97 TO CROSS SWAAN AT OR ABOVE 7000, THEN ON TRACK 003.29/8.00 TO CROSS APISE AT 6000 AND AT 210 KIAS. EXPECT RNP APPROACH OR RADAR VECTORS TO FINAL APPROACH COURSE.

LANDING RWY 28L/R: FROM MRFREE ON TRACK 035.30/16.19 TO PRISN, THEN ON TRACK 035.47/4.62 TO CROSS DIKAC AT 7000 AND AT 210 KIAS, THEN ON HEADING 102.13 OR AS ASSIGNED BY ATC. EXPECT RNP APPROACH OR RADAR VECTORS TO FINAL APPROACH COURSE.

PROCEDURAL DATA NOTES:

NOTE: RADAR REQUIRED

NOTE: RNAV 1

NOTE: GPS REQUIRED

FIXES AND/OR HOLDING PATTERNS:

CHART BOI VORTAC.

COMMUNICATIONS:

BOI ATIS, BOI APP CON, BOI TWR, BOI GND CON, MUO APP CON.

AIRPORTS SERVED:

BOISE AIR TERMINAL/GOWEN FLD, BOISE, ID (KBOI)

LOST COMMUNICATIONS PROCEDURE:

REMARKS:

ADDITIONAL FLIGHT DATA:

DME/DME ASSESSMENT: UNSAT.

REFERENCE MAGNETIC VARIATION = KBOI 13E/2020

CHART: R-3203 A, B, C, D.

THIS PROCEDURE IS A CORRECTED COPY PREVIOUSLY PUBLISHED IN NFDD 117.



FEDERAL AVIATION ADMINISTRATION
FLIGHT STANDARDS SERVICE
STANDARD TERMINAL ARRIVAL (STAR)

Bearings, headings, courses, tracks and radials are magnetic. Elevations and altitudes are in feet, MSL. Altitudes are minimum altitudes unless otherwise indicated.
Distances are in nautical miles (NM). Graphic depictions attached.

Arrival Name	Number	STAR Computer Code	Superseded Number	Dated	Effective Date
SADYL (RNAV)	FOUR	PELYT.SADYL4	THREE	12/07/2017	10 SEP 20
CHART AT APISE TERMINUS: KBOI LDG RWY 10R/L.					
CHART AT DIKAC TERMINUS: KBOI LDG RWY 28R/L.					

FLIGHT INSPECTED BY:

SCOTT A THOMPSON
Name

FICO
Organization

5/21/2020
Date

*Digitally signed by***JOHNNIE BAKER**

Jun 17, 2020

Signature

*Digitally signed by***JOHNNIE BAKER**

Jun 17, 2020

DEVELOPED BY:

JOSEPH ZEDER

AJV-A442

02/07/2020

*Digitally signed by***JOHNNIE BAKER**

Jun 17, 2020

Signature

APPROVED BY:

PATRICK MULQUEEN, MANAGER

AJV-A440

Date

Signature

CHANGES:

1. MOVED DIKAC 3.26NM SW, CHANGED ALTITUDE FROM 6000 TO 7000, AND CHANGED DIKAC TO FO.
2. CHANGED 28L/R ARRIVAL ROUTE FROM... CROSS DIKAC AT 6000 AND AT 210 KIAS... TO ...CROSS DIKAC AT 7000 AND AT 210 KIAS, THEN ON HEADING 102.13...
3. MOVED PRISN 0.20NM NW.
4. CHART: R 3203 A, B, C, D.
5. ADDED RWY TERMINUS FOR ALL RUNWAY TRANSITIONS.
6. CHANGED ALTITUDE AT SADYL FROM "AT OR ABOVE 14000" TO "BETWEEN 14000 AND 16000".
7. REMOVED MEA/MOCA'S FROM ARRIVAL DESCRIPTION.

REASONS:

- 1-4. FOR ATC REQUEST.
5. CONFORM TO CRITERIA.
6. FOR ATC REQUEST.
7. CONFORM TO CRITERIA.

06/17/2020: THIS IS A CORRECTED COPY OF THE FORM APPROVED ON 05/22/2020.

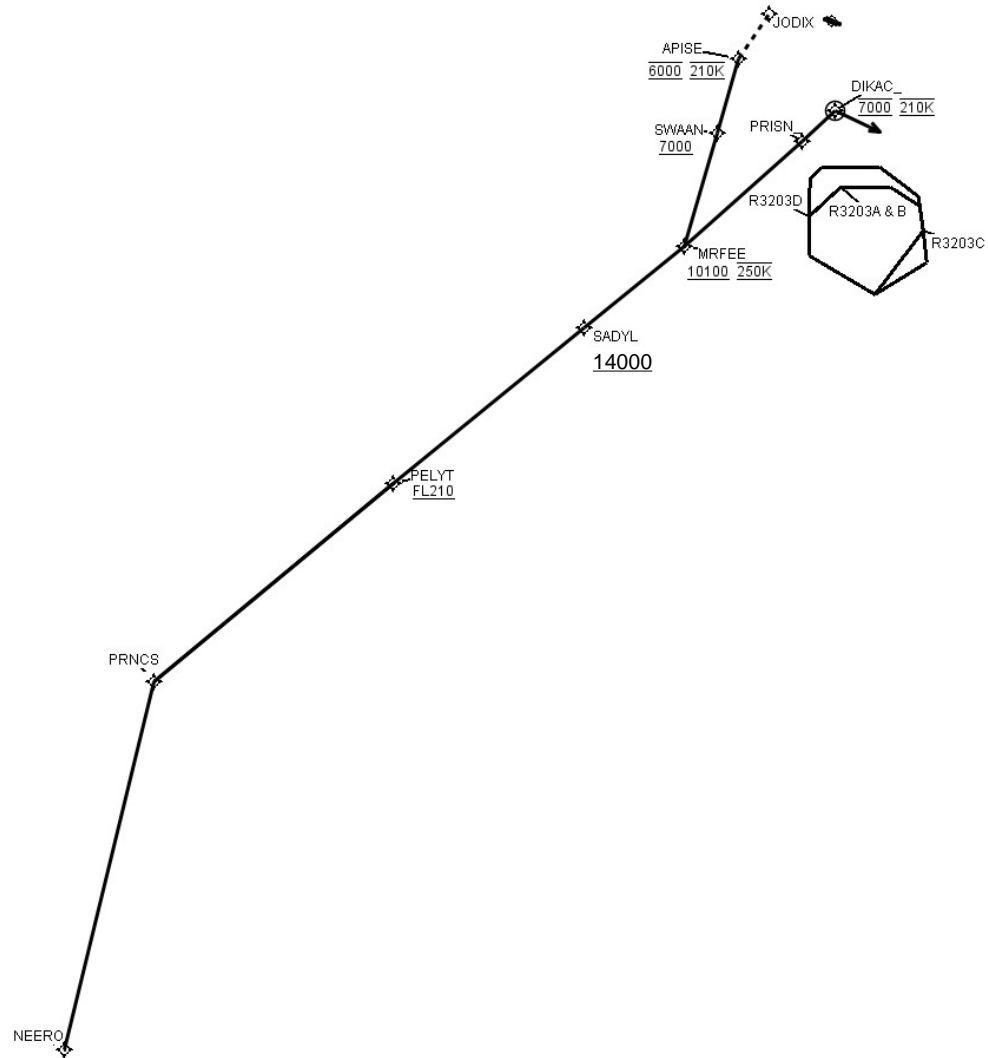
1. CHANGED CROSSING ALTITUDE AT SADYL TO AT OR ABOVE 14000.



FEDERAL AVIATION ADMINISTRATION
FLIGHT STANDARDS SERVICE
STANDARD TERMINAL ARRIVAL (STAR)

Bearings, headings, courses, tracks and radials are magnetic. Elevations and altitudes are in feet, MSL. Altitudes are minimum altitudes unless otherwise indicated.
Distances are in nautical miles (NM). Graphic depictions attached.

Arrival Name	Number	STAR Computer Code	Superseded Number	Dated	Effective Date
SADYL (RNAV)	FOUR	PELYT.SADYL4	THREE	12/07/2017	10 SEP 20
Graphic Depiction 1					



FEDERAL AVIATION ADMINISTRATION
FLIGHT STANDARDS SERVICE
STAR (DATA RECORD)

Arrival Name SADYL (RNAV)	Number FOUR	STAR Computer Code PELYT.SADYL4	Superseded Number THREE	Dated 12/07/2017	Effective Date 10 SEP 20				
FIX/NAVAID	LAT/LONG	C	FO/FB	LEG TYPE	TC	DIST (NM)	ALTITUDE	SPEED	REMARKS
En Route Transition									
NEERO	414903.35N / 1180129.27W	Y		IF					NEERO.SADYL4
PRNCS	422635.65N / 1174852.57W	Y	FB	TF	013.97	38.68			
PELYT	424648.25N / 1171516.17W	Y	FB	TF	050.66	32.00	AT/ABOVE FL210		
En Route Transition									
PRNCS	422635.65N / 1174852.57W	Y		IF					PRNCS.SADYL4
PELYT	424648.25N / 1171516.17W	Y	FB	TF	050.66	32.00	AT/ABOVE FL210		
Common Route									
PELYT	424648.25N / 1171516.17W	Y		IF			AT/ABOVE FL210		PELYT.SADYL4
SADYL	430236.85N / 1164817.90W	Y	FB	TF	051.28	25.35	AT/ABOVE14000		
MRFEE	431057.14N / 1163409.77W	Y	FB	TF	051.08	13.29	AT/ABOVE 10100	AT 250K	
Runway Transition									
MRFEE	431057.14N / 1163409.77W	Y		IF			AT/ABOVE 10100	AT 250K	
SWAAN	432226.81N / 1162934.39W	Y	FB	TF	016.24	11.97	AT/ABOVE 7000		
APISE	433007.58N / 1162629.39W	Y	FB	TF	016.29	08.00	AT 6000	AT 210K	
KBOI:RWY10L,RWY10R									
Runway Transition									
MRFEE	431057.14N / 1163409.77W	Y		IF			AT/ABOVE 10100	AT 250K	
PRISN	432142.12N / 1161735.87W	Y	FB	TF	048.30	16.19			
DIKAC	432445.75N / 1161251.29W	Y	FO	TF	048.47	04.62	AT 7000	AT 210K	
KBOI:RWY28L,RWY28R									