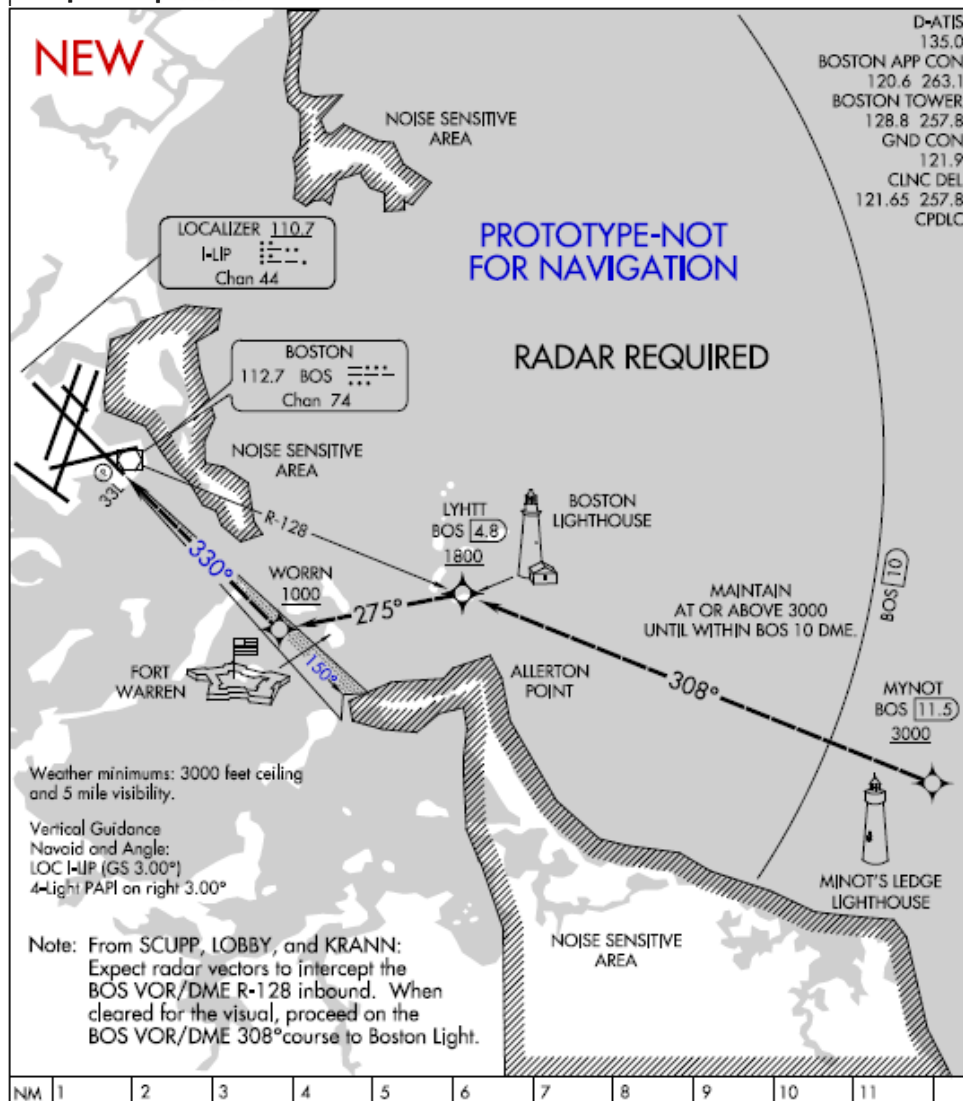


 US Department of Transportation Federal Aviation Administration		Charted Visual Flight Procedures (CVFP) <i>Bearings, courses, and radials are magnetic. Elevations and altitudes are in feet MSL. Altitudes are recommended unless otherwise indicated. Ceilings are in feet above airport elevation. Distances are in nautical miles except visibilities which are in statute miles.</i>	
CVFP Name	Airport Name	City and State	
LIGHT VISUAL RWY 33L	GENERAL EDWARD LAWRENCE LOGAN INTL	BOSTON, MA	
VISUAL ARRIVAL ROUTE			
FROM (visual landmarks)	TO (visual landmarks)	COURSE (if desired)	ALTITUDE (if needed) Show if for Class B
1 MILE NORTH-NORTHEAST OF MINOT'S LEDGE LIGHTHOUSE	BOSTON LIGHTHOUSE	BOSTON VOR/DME R-128 INBOUND (308° COURSE)	AT OR ABOVE 3000 (FOR CLASS B) UNTIL WITHIN 10.0 DME OF BOS VOR/DME, THEN AT OR ABOVE 1800.
BOSTON LIGHTHOUSE	0.75 MILES WEST OF FORT WARREN.	275°	AT OR ABOVE 1000
Weather Minima: Ceiling <u>3000</u> Visibility <u>5</u> NOTE: RADAR REQUIRED. NOTE: FROM SCUPP, LOBBY, AND KRANN. NOTE: EXPECT RADAR VECTORS TO INTERCEPT THE BOS VOR/DME R-128 INBOUND. NOTE: WHEN CLEARED FOR THE VISUAL, PROCEED ON THE BOS 308° VOR/DME COURSE TO BOSTON LIGHT.		Supplementary Navaid/Waypoint Information and Additional Landmarks Chart: MINOT'S LEDGE LIGHTHOUSE; MINOT'S LEDGE LIGHTHOUSE WAYPOINT - MYNOT FORT WARREN; FORT WARREN WAYPOINT - WORN BOSTON LIGHTHOUSE; BOSTON LIGHTHOUSE WAYPOINT - LYHTT BOS VOR/DME BOS VOR/DME R-128 ALLERTON POINT	
Vertical Guidance Navaid and Angle: LOC I-LIP (GS 3.00°) 4-LIGHT PAPI ON RIGHT 3.00°			
Description of route (will not be printed on chart) 1 MILE NORTH-NORTHEAST OF MINOT'S LIGHT (MYNOT), PROCEED ON THE BOS VOR/DME 308° COURSE TO BOSTON LIGHT (LYHTT), THENCE... ...THE 275° COURSE FROM BOSTON LIGHT (LYHTT) TO FORT WARREN (WORN) AND INTERCEPT THE I-LIP LOCALIZER COURSE INBOUND TO RWY 33L			
Amdt. No. or Orig.	Effective Date	Supersedes	Amdt. No.
1A	12 OCT 2017	LIGHT VISUAL RWY 33L	1
		Dated	27 JUN 2013

 QUALITY
 16
 CHECKED

Graphic Depiction:

QUALITY
16
CHECKED

Communications to be charted:

ATIS, BOS APP CON, BOS TOWER, GND CON, CLNC DEL

CHANGES-REASONS:

1. AMENDED I-LIP LOCALIZER COURSE FROM 331 DEGREES TO 330 DEGREES - KBOS MAGVAR BEING UPDATED FROM 16W TO 15W.
2. CHANGED ALL INSTANCES OF THE WORD "VIA" TO "ON" - IN ACCORDANCE WITH CURRENT DOCUMENTATION POLICY.

	NAME (Typed and Signed), TITLE and ORGANIZATION		DATE
Developed By	PETER GUIMOND, AIS, AJV-5422 <i>Digitally signed by PETER R GUIMOND</i> Apr 25, 2017		04/25/2017
Approved	Reg. ATD	JULIE MORGAN, MANAGER, AJV-5420	<i>Digitally signed by ROBERT G HAMILTON</i> Aug 03, 2017
	FIFO		