

FEDERAL AVIATION ADMINISTRATION  
FLIGHT STANDARDS SERVICE  
STANDARD TERMINAL ARRIVAL (STAR)

Bearings, headings, courses, tracks and radials are magnetic. Elevations and altitudes are in feet, MSL. Altitudes are minimum altitudes unless otherwise indicated.  
Distances are in nautical miles (NM). Graphic depictions attached.

Arrival Name	Number	STAR Computer Code	Superseded Number	Dated	Effective Date
KYAAN (RNAV)	THREE	KYAAN.KYAAN3	TWO	12/10/2015	07 DEC 2017

TRANSITION ROUTES:

Transition Name	Transition Computer Codes	From FIX/NAVAID	To FIX/NAVAID	Mag Course	Distance	MEA	MOCA	MAA	Crossing Altitudes / Fixes
DEVLE	DEVLE.KYAAN3	DEVLE	DEVLE						AT/ABOVE 16000
			MAALR	123.62	20.03	9000	6000		AT/ABOVE 10000
			KYAAN	110.80	14.96	8000	5100		AT/ABOVE 8000

ARRIVAL ROUTE DESCRIPTION:

LANDING RWY 10L/R: FROM KYAAN ON TRACK 129.35/12.38 TO BEATR (MEA5000), THEN ON TRACK 129.47/2.20 TO CROSS JIMMI AT OR ABOVE 5000 AND AT 210 KIAS (MEA 5000). EXPECT ASSIGNED APPROACH OR RADAR VECTORS TO FINAL APPROACH COURSE.

LANDING RWY 28L/R: FROM KYAAN ON TRACK 111.36/15.77 TO CROSS CAMML AT 8000 AND AT 210 KIAS (MEA 7000/MOCA 5300), THEN ON TRACK 102.47/4.84 TO CROSS SMYRF AT 8000 AND AT 210 KIAS(MEA 7000/MOCA 5700), THEN ON TRACK 102.54/2.00 TO DYYLN (MEA 7000/MOCA 6100), THEN ON TRACK 102.54. EXPECT ASSIGNED APPROACH OR RADAR VECTORS TO FINAL APPROACH COURSE.

PROCEDURAL DATA NOTES:

NOTE: RADAR REQUIRED.

NOTE: RNAV 1.

NOTE: GPS REQUIRED.

FIXES AND/OR HOLDING PATTERNS:

CHART BOI VORTAC

COMMUNICATIONS:

BOI ATIS, BOI APP CON, BOI TWR, BOI GND CON

AIRPORTS SERVED:

BOISE AIR TERMINAL / GOWEN FIELD, BOISE, ID

LOST COMMUNICATIONS PROCEDURE:

REMARKS:

MOUNTAINOUS ROC REDUCTION APPLIED KYAAN - BEATR.  
THIS AMENDMENT DOES NOT QUALIFY AS A PERIODIC REVIEW.

ADDITIONAL FLIGHT DATA:

DME/DME ASSESSMENT: UNSAT.

REFERENCE MAGNETIC VARIATION = KBOI 13E/2020

CHART: CROSS KYAAN AT 250 KIAS.

QUALITY  
14  
CHECKED

FEDERAL AVIATION ADMINISTRATION  
FLIGHT STANDARDS SERVICE  
STANDARD TERMINAL ARRIVAL (STAR)

Bearings, headings, courses, tracks and radials are magnetic. Elevations and altitudes are in feet, MSL. Altitudes are minimum altitudes unless otherwise indicated.  
Distances are in nautical miles (NM). Graphic depictions attached.

Arrival Name	Number	STAR Computer Code	Superseded Number	Dated	Effective Date
<b>KYAAN (RNAV)</b>	<b>THREE</b>	<b>KYAAN.KYAAN3</b>	<b>TWO</b>	<b>12/10/2015</b>	<b>07 DEC 2017</b>

FLIGHT INSPECTED BY:

FLIGHT INSPECTION NOT REQUIRED, MANAGER ROBERT STUCKERT

Name

AJW-331

Organization

*Digitally signed by***CASIMIR L TABAKA**

10/05/2015

Sep 05, 2017

Date

Signature

DEVELOPED BY:*Digitally signed by***CASIMIR L TABAKA**

Wayne VanDeGraaff, Support Manager

Name

Sep 05, 2017

Salt Lake ARTCC, 801-320- 2530

Organization

Date

Signature

APPROVED BY:

MARLON J. ROBINSON, MANAGER

Name

AJV-5440

Organization

*Digitally signed by***CASIMIR L TABAKA**

Sep 05, 2017

Date

Signature

CHANGES:

1. CHANGED REFERENCE MAGNETIC VARIATION from 15E/2005 to 13E/2020 AND ADJUSTED ALL MAG COURSES ACCORDINGLY.
2. CHANGED RECOMMENDED NAVAID FOR RUNWAY TRANSITION FM LEG from DBS VORTAC to LKT VOR/DME.

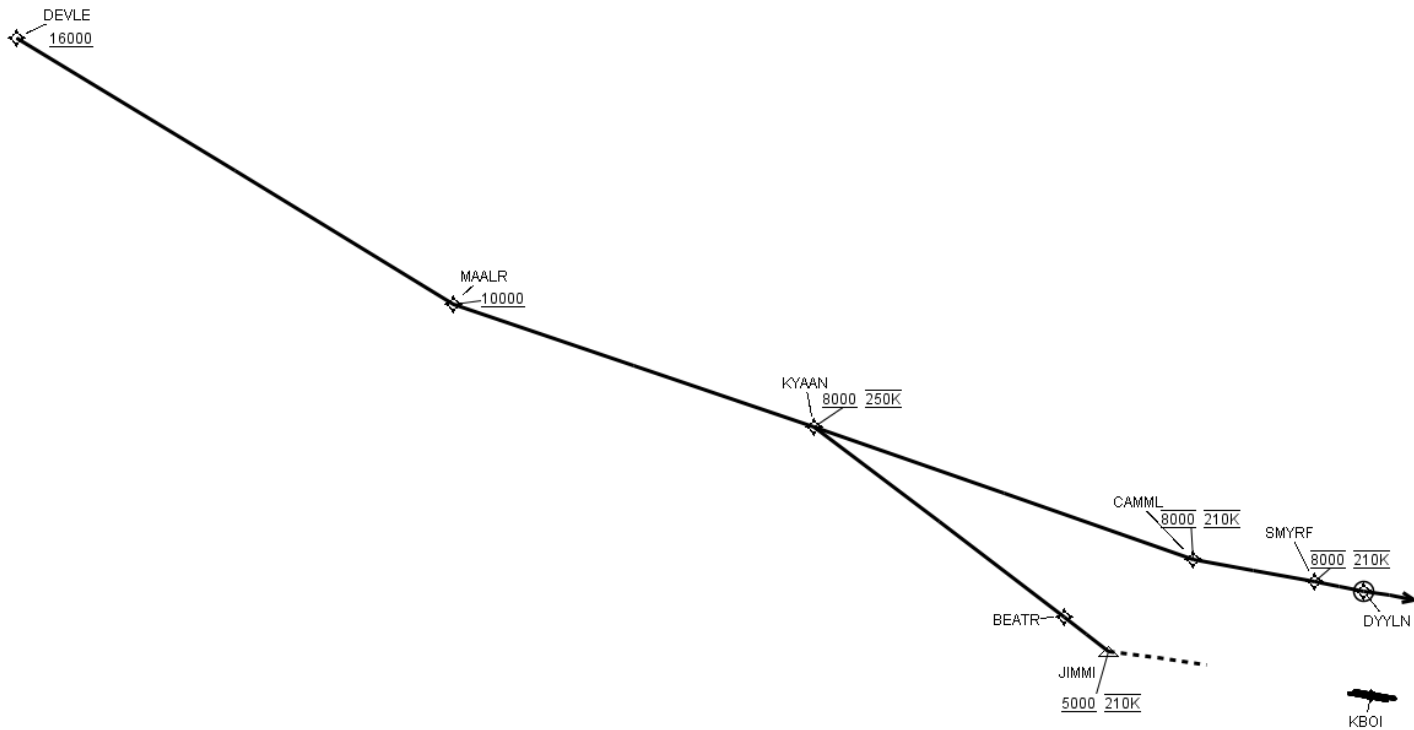
REASONS:

1. KBOI AIRPORT MAGVAR UPDATE EFFECTIVE 12/07/2017.
2. LKT SUPPORTS MAGNETIC VARIATION UPDATE.

FEDERAL AVIATION ADMINISTRATION  
FLIGHT STANDARDS SERVICE  
STANDARD TERMINAL ARRIVAL (STAR)

Bearings, headings, courses, tracks and radials are magnetic. Elevations and altitudes are in feet, MSL. Altitudes are minimum altitudes unless otherwise indicated.  
Distances are in nautical miles (NM). Graphic depictions attached.

Arrival Name	Number	STAR Computer Code	Superseded Number	Dated	Effective Date
KYAAN (RNAV)	THREE	KYAAN.KYAAN3	TWO	12/10/2015	07 DEC 2017



FEDERAL AVIATION ADMINISTRATION  
FLIGHT STANDARDS SERVICE  
STAR (DATA RECORD)

Arrival Name <b>KYAAN (RNAV)</b>	Number <b>THREE</b>	STAR Computer Code <b>KYAAN.KYAAN3</b>	Superseded Number <b>TWO</b>	Dated <b>12/10/2015</b>	Effective Date <b>07 DEC 2017</b>
-------------------------------------	------------------------	---	---------------------------------	----------------------------	--------------------------------------

FIX/NAVAID	LAT/LONG	C	FO/FB	LEG TYPE	TC	DIST (NM)	ALTITUDE	SPEED	REMARKS
<b>En Route Transition</b>									
DEVLE	441243.52N / 1171456.63W	Y		IF			AT/ABOVE 16000		DEVLE.KYAAN3
MAALR	435808.52N / 1165553.66W	Y	FB	TF	136.62	20.03	AT/ABOVE 10000		
KYAAN	434947.93N / 1163843.45W	Y	FB	TF	123.80	14.96	AT/ABOVE 8000	AT 250K	
<b>Runway Transition</b>									
KYAAN	434947.93N / 1163843.45W	Y		IF			AT/ABOVE 8000	AT 250K	
BEATR	433959.11N / 1162818.18W	Y	FB	TF	142.35	12.38			
JIMMI	433814.40N / 1162627.45W	Y	FB	TF	142.47	02.20	AT/ABOVE 5000	AT 210K	
<b>KBOI:RWY 10L/R</b>									
<b>Runway Transition</b>									
KYAAN	434947.93N / 1163843.45W	Y		IF			AT/ABOVE 8000	AT 250K	
CAMML	434052.42N / 1162046.93W	Y	FB	TF	124.36	15.77	AT 8000	AT 210K	
SMYRF	433847.38N / 1161445.85W	Y	FB	TF	115.47	04.84	AT 8000	AT 210K	
DYYLN	433755.61N / 1161216.74W	Y	FO	TF	115.54	02.00			
KBOI:RWY 28B				FM	115.54				RECOMMENDED NAVAID: LKT VOR/DME

QUALITY  
14  
CHECKED