

US DEPARTMENT of TRANSPORTATION - FEDERAL AVIATION ADMINISTRATION
STANDARD TERMINAL ARRIVAL (STAR)

Bearings, headings, courses, tracks and radials are magnetic. Elevations and altitudes are in feet. MSL. Altitudes are minimum altitudes unless otherwise indicated.
Distances are in nautical miles (NM). Graphic depiction attached.

Arrival Name	Number	STAR Computer Code	Superseded Number	Dated	Effective Date
WAATS RNAV	FOUR	WAATS.WAATS4	THREE	17 DEC 2009	31 MAR 2016

TRANSITION ROUTES:

Transition Name	Transition Computer Codes	From FIX/NAVAID	To FIX/NAVAID	Mag Course	Distance	MEA	MOCA	MAA	Crossing Altitudes / Fixes
-----------------	------------------------------	--------------------	------------------	------------	----------	-----	------	-----	----------------------------

ARRIVAL ROUTE DESCRIPTION:

FROM BVL VORTAC ON TRACK 076.00/41.00 TO KNOLE (MEA 17000), THEN ON TRACK 076.58/15.00 TO WAATS (MEA 14000).

LANDING RWY NORTH (34L/R/35): FROM WAATS ON TRACK 063.61/12.81 TO RAACE (MEA 12000), THENCE AS DEPICTED TO CEEDR, THEN ON HEADING 161.00.EXPECT RADAR VECTORS TO FINAL APPROACH COURSE.

LANDING SOUTH (RWY 16L/R/17): FROM WAATS ON TRACK 078.19/12.56 TO DUGGY MEA 12000), THENCE AS DEPICTED TO RROYY, THEN ON HEADING 341.00.EXPECT RADAR VECTORS TO FINAL APPROACH COURSE.

PROCEDURAL DATA NOTES:

NOTE: RADAR REQUIRED

NOTE: RNAV 1

NOTE: DME/DME/IRU OR GPS REQUIRED

NOTE: TURBOJET AIRCRAFT ONLY

NOTE: For Non-GPS equipped aircraft LCU, TCH and OGD DMEs must be operational.

NOTE: AT KNOLE CHART: EXPECT 17000.

NOTE: AT WATTS CHART: CROSS AT OR ABOVE 14000.

NOTE: AT RAACE CHART: CROSS AT 12000.

NOTE: AT DUGGY CHART: CROSS AT 12000.

FIXES AND/OR HOLDING PATTERNS:

CHART HOLDING AT FFU: HOLD S, RT, HEADING 340.00 INBOUND, 8 NM LEGS

CHART HOLDING AT OGD: HOLD W, RT, HEADING 123.00 INBOUND, 8 NM LEGS

CHART HOLDING AT KNOLE: HOLD W, RT, HEADING 076.58 INBOUND, 10 NM LEGS

COMMUNICATIONS:

SALT LAKE CITY APP CON, ATIS

AIRPORTS SERVED:

SALT LAKE CITY INTL

US DEPARTMENT of TRANSPORTATION - FEDERAL AVIATION ADMINISTRATION
STANDARD TERMINAL ARRIVAL (STAR)

Bearings, headings, courses, tracks and radials are magnetic. Elevations and altitudes are in feet. MSL. Altitudes are minimum altitudes unless otherwise indicated.

Distances are in nautical miles (NM). Graphic depiction attached.

Arrival Name	Number	STAR Computer Code	Superseded Number	Dated	Effective Date
WAATS RNAV	FOUR	WAATS.WAATS4	THREE	17 DEC 2009	31 MAR 2016

LOST COMMUNICATIONS PROCEDURE:

LANDING NORTH: AT CEEDR, TURN LEFT DIRECT TO FFU VORTAC AND HOLD. MAINTAIN 12000.

LANDING SOUTH: AT RROYY, TURN RIGHT DIRECT TO OGD VORTAC AND HOLD. MAINTAIN 12000.

REMARKS:

OGD and FFY and their respective holding patterns should be charted as stand-alone features.

ADDITIONAL FLIGHT DATA:

DME/DME ASSESSMENT: SAT (RNP 2.0)

REFERENCE MAGNETIC VARIATION = KSLC 14E/1995

CHART FFU, OGD and their respective holding patterns.

CHANGES:

1. CHARTING ICON AT KNOLE AMENDED TO REMOVE SPEED.
2. Remove use of "via" in arrival route description and replace with "on track".
3. "WP" removed from arrival route description.

REASONS:

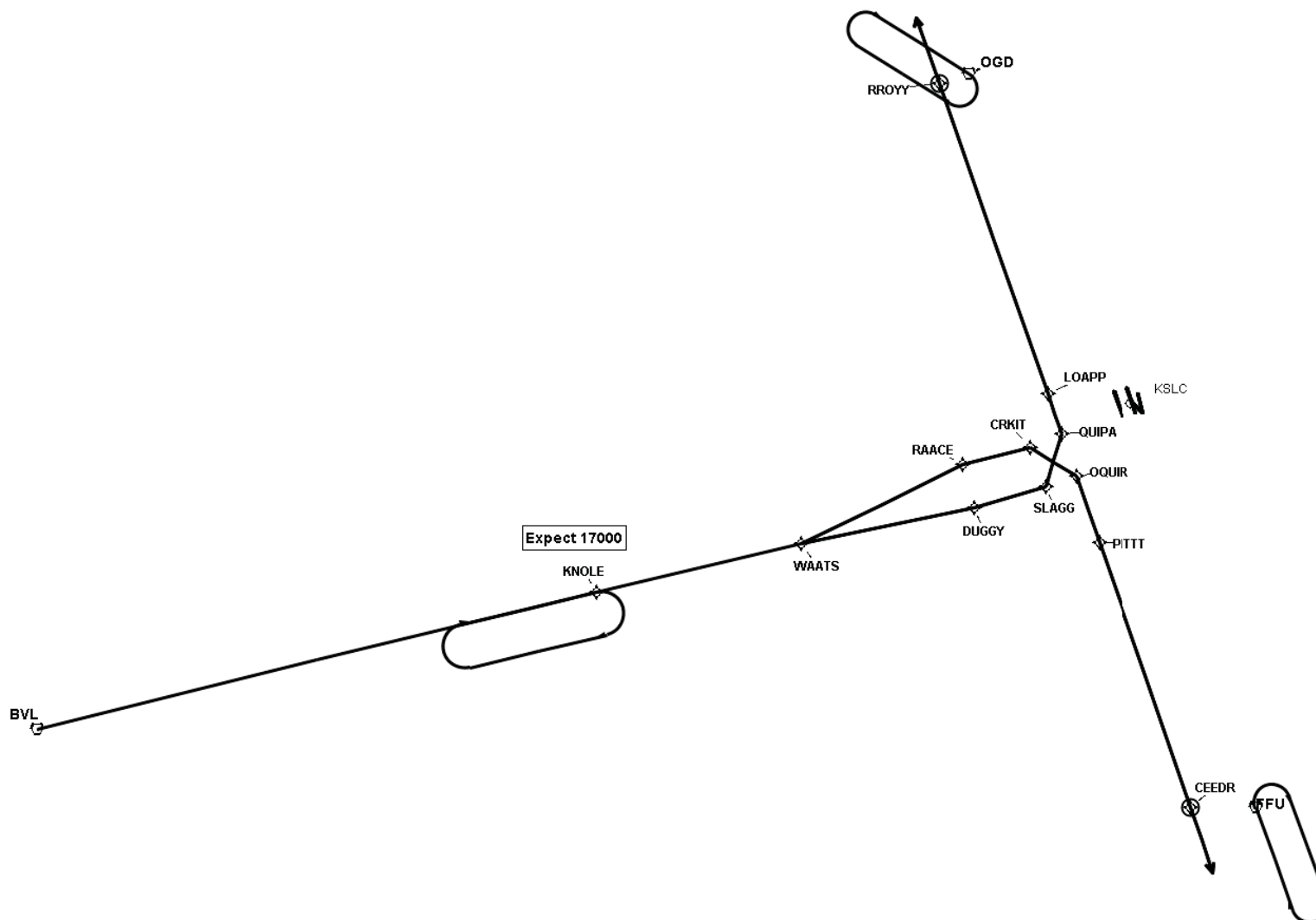
1. ATC request for use with "descend via" clearances.
- 2, 3. Compliance with current STAR order.



US DEPARTMENT of TRANSPORTATION - FEDERAL AVIATION ADMINISTRATION
STANDARD TERMINAL ARRIVAL (STAR)

Bearings, headings, courses, tracks and radials are magnetic. Elevations and altitudes are in feet. MSL. Altitudes are minimum altitudes unless otherwise indicated.
 Distances are in nautical miles (NM). Graphic depiction attached.

Arrival Name	Number	STAR Computer Code	Superseded Number	Dated	Effective Date
WAATS RNAV	FOUR	WAATS.WAATS4	THREE	17 DEC 2009	31 MAR 2016
Graphic Depiction 1					



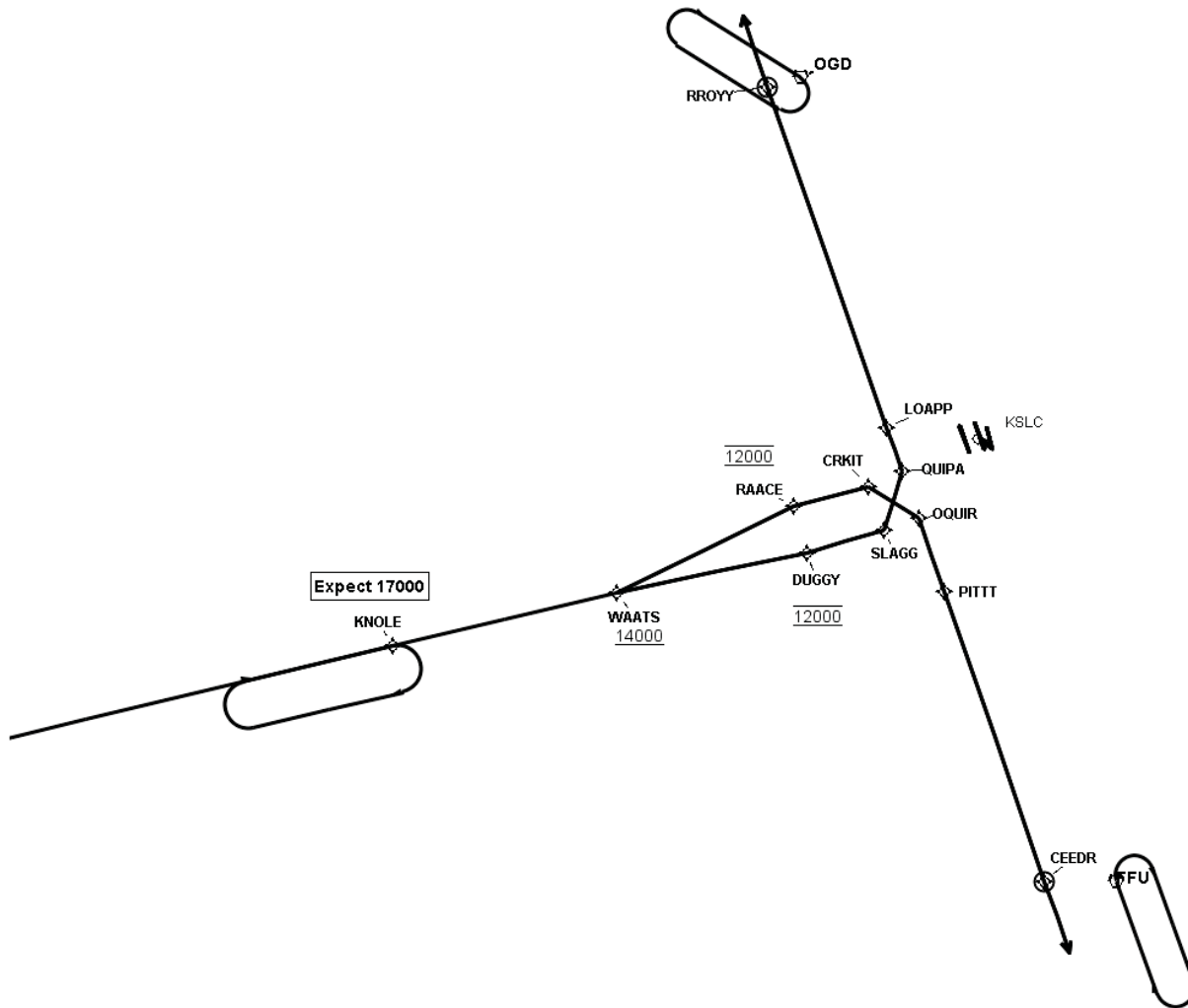
QUALITY
2
CHECKED

US DEPARTMENT of TRANSPORTATION - FEDERAL AVIATION ADMINISTRATION
STANDARD TERMINAL ARRIVAL (STAR)

Bearings, headings, courses, tracks and radials are magnetic. Elevations and altitudes are in feet. MSL. Altitudes are minimum altitudes unless otherwise indicated.

Distances are in nautical miles (NM). Graphic depiction attached.

Arrival Name	Number	STAR Computer Code	Superseded Number	Dated	Effective Date
WAATS RNAV	FOUR	WAATS.WAATS4	THREE	17 DEC 2009	31 MAR 2016
Graphic Depiction 2					



QUALITY
2
CHECKED

US DEPARTMENT of TRANSPORTATION - FEDERAL AVIATION ADMINISTRATION

STAR (DATA RECORD)

Arrival Name WAATS RNAV	Number FOUR	STAR Computer Code WAATS.WAATS4	Superseded Number THREE	Dated 17 DEC 2009	Effective Date 31 MAR 2016
----------------------------	----------------	------------------------------------	----------------------------	----------------------	-------------------------------

FIX/NAVAID	LAT/LONG	C	FO/FB	LEG TYPE	TC	DIST (NM)	ALTITUDE	SPEED	REMARKS
Common Route									
BVL VORTAC	404333.95N / 1134526.70W	Y		IF					BVL.WAATS4
KNOLE	404321.37N / 1125131.15W	Y	FB	TF	090.00	41.00			
WAATS	404310.49N / 1123147.54W	Y	FB	TF	090.58	15.00	AT/ABOVE 14000		
Runway Transition									
WAATS	404310.49N / 1123147.54W	Y		IF			AT/ABOVE 14000		
DUGGY	404240.51N / 1121516.96W	Y	FB	TF	092.19	12.56	AT 12000		
SLAGG	404255.63N / 1120820.16W	Y	FB	TF	087.23	05.29			
QUIPA	404623.36N / 1120540.06W	Y	FB	TF	030.36	04.01			
LOAPP	404925.64N / 1120601.42W	Y	FB	TF	354.91	03.05			
RROY Y	411319.25N / 1120852.75W	Y	FO	TF	354.84	23.98			
KSLC:RWY 16B				VM	355.00				
Runway Transition									
WAATS	404310.49N / 1123147.54W	Y		IF			AT/ABOVE 14000		
DUGGY	404240.51N / 1121516.96W	Y	FB	TF	092.19	12.56	AT 12000		
SLAGG	404255.63N / 1120820.16W	Y	FB	TF	087.23	05.29			
QUIPA	404623.36N / 1120540.06W	Y	FB	TF	030.36	04.01			
LOAPP	404925.64N / 1120601.42W	Y	FB	TF	354.91	03.05			
RROY Y	411319.25N / 1120852.75W	Y	FO	TF	354.84	23.98			
KSLC:RWY 17				VM	355.00				
Runway Transition									
WAATS	404310.49N / 1123147.54W	Y		IF			AT/ABOVE 14000		
RAACE	404554.30N / 1121519.77W	Y	FB	TF	077.61	12.81	AT 12000		
CRKIT	404555.75N / 1120849.82W	Y	FB	TF	089.68	04.94			
OQUIR	404307.07N / 1120517.01W	Y	FB	TF	136.16	03.89			
PITTT	403800.57N / 1120441.39W	Y	FB	TF	174.94	05.12			



US DEPARTMENT of TRANSPORTATION - FEDERAL AVIATION ADMINISTRATION

STAR (DATA RECORD)

Arrival Name	Number	STAR Computer Code	Superseded Number	Dated	Effective Date
WAATS RNAV	FOUR	WAATS.WAATS4	THREE	17 DEC 2009	31 MAR 2016

FIX/NAVAID	LAT/LONG	C	FO/FB	LEG TYPE	TC	DIST (NM)	ALTITUDE	SPEED	REMARKS
CEEDR	401738.50N / 1120219.12W	Y	FO	TF	174.91	20.43			
KSLC:RWY 34B				VM	175.00				

Runway Transition									
WAATS	404310.49N / 1123147.54W	Y		IF			AT/ABOVE 14000		
RAACE	404554.30N / 1121519.77W	Y	FB	TF	077.61	12.81	AT 12000		
CRKIT	404555.75N / 1120849.82W	Y	FB	TF	089.68	04.94			
OQUIR	404307.07N / 1120517.01W	Y	FB	TF	136.16	03.89			
PITTT	403800.57N / 1120441.39W	Y	FB	TF	174.94	05.12			
CEEDR	401738.50N / 1120219.12W	Y	FO	TF	174.91	20.43			
KSLC:RWY 35				VM	175.00				

