
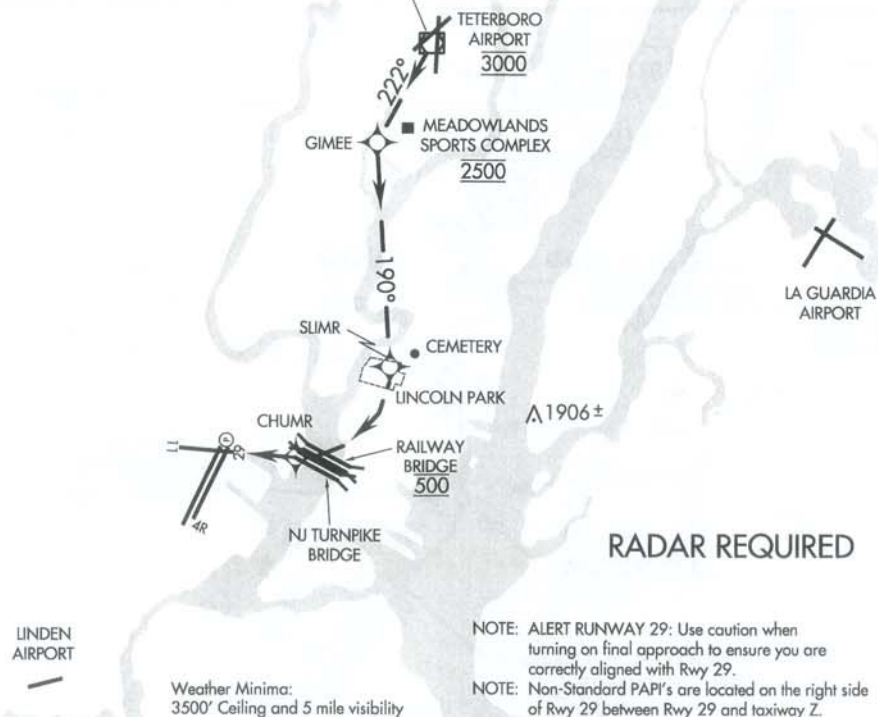
 U.S. Department of Transportation Federal Aviation Administration Charted Visual Flight Procedures (CVFP)		Bearings, courses, and radials are magnetic. Elevations and altitudes are in feet MSL. Altitudes are recommended unless otherwise indicated. Ceilings are in feet above airport elevation. Distances are in nautical miles except visibilities which are statute miles.	
CVFP Name STADIUM VISUAL RWY 29		Airport Name NEWARK LIBERTY INTL.	City and State NEWARK NJ
VISUAL ARRIVAL ROUTE			
FROM (visual landmarks)	TO (visual landmarks)	COURSE (if desired)	Altitude (if needed) Show if for Class B
-Teterboro	-West end of Meadowlands sports complex	222	@3000at Teterboro @2500at Meadowlands
-Sports Complex	-Lincoln Park	190	2500' - 1500'
-Lincoln Park -Railway Bridge	-Railway Bridge -RWY 29		@ 500'
Weather minima: Ceiling <u>3500</u> Visibility <u>5 SM</u> Notes: -RADAR REQUIRED -NOTE:ALERT RUNWAY 29: Use caution when turning on final approach to ensure you are correctly aligned with Rwy 29. -NOTE:Non-Standard PAPI's are located on the right side of Rwy 29 between Rwy 29 and taxiway Z. Do not confuse taxiway Z with Rwy 29. -When Rwy 29 REILs and PAPIs are inoperative, procedure NA at night		Supplementary Navaid information and Additional Landmarks Chart: Teterboro VOR/DME and Airport, Meadowlands Sports complex, GIMEE, SLIMR, Railway Bridge, CHUMR, LaGuardia Airport, Cemetery, Lincoln Park, NJ Turnpike Bridge, Linden Airport.	
Vertical Guidance Navaid and Angle PAPI 3.00			
DESCRIPTION OF ROUTE (WILL BE PRINTED ON CHART) When cleared for the Stadium Visual Approach, Proceed Direct to Teterboro Airport and cross it at 3000'. Proceed on 222 Heading to West end of Meadowlands Sports complex (GIMEE) Cross GIMEE at 2500. Turn left at GIMEE and continue along Left (East) side of river to Lincoln park. Plan to be in final Landing Configuration by Lincoln park. Turn Right and descend to cross Railway Bridge at 500.			
			
Amdt. No. or Orig. 3	Effective Date 25 JUN 2015	Supersedes Stadium Visual Rwy 29	Amdt. No. 2
		Dated 02/06/2014	

Graphic Depiction:

ATIS
115.7
ATIS (SOUTH)
134.825
NEW YORK APP CON
128.55 120.15
NEWARK TOWER
118.3
GND CON
121.8

TETERBORO
108.4 TEB $\overline{\text{---}}$...
Chan 21

Vertical Guidance Navaid and Angle:
Rwy 29 PAPI, 3.00°



NM	1	2	3	4	5	6	7	8	9	10	11	12	13	14	15	16	17	18	19
----	---	---	---	---	---	---	---	---	---	----	----	----	----	----	----	----	----	----	----

STADIUM VISUAL RUNWAY 29

When cleared for the Stadium Visual Approach, Proceed direct to Teterboro Airport and cross it at 3000'
Proceed on 222° heading to west end of Meadowlands Sports complex (GIMEE)
Turn left at GIMEE and continue along left (east) side of river to Lincoln Park
Plan to be in final landing configuration by Lincoln Park. Turn right and descend to cross Railway Bridge at 500'

Communications to be charted:

D-ATIS Arrival 115.7
South Arrival 134.825

New York Approach 128.55 120.15

Newark Tower 118.3

Ground 121.8

Changes: Added to the charting: route description.

QUALITY
7
CHECKED