

**U.S. DEPARTMENT of TRANSPORTATION -- FEDERAL AVIATION ADMINISTRATION**  
**GRAPHIC DEPARTURE PROCEDURE (DP)**

Bearings, headings, courses, tracks, and radials are magnetic. Elevation and altitudes are in feet MSL. Altitudes are minimum altitudes unless otherwise indicated. Ceilings are in feet above airport elevation.  
 Distances are in nautical miles. Visibilities are in statute miles or feet RVR unless otherwise indicated. Graphic depictions attached.

DP Name	Number	DP Computer Code	Superseded Number	Dated	Effective Date
DARCY	THREE	DARCY3.DARCY	TWO	03/07/2013	22 AUG 2013

**TYPE:** RNAV      SID

**DP ROUTE DESCRIPTION:**

**CHICAGO/AURORA MUNI (KARR)**

TAKEOFF RWY 9: CLIMB HEADING 090.14 TO 1220, THEN AS ASSIGNED BY ATC, EXPECT VECTORS TO DENNT. THENCE...  
 TAKEOFF RWY 15: CLIMB HEADING 147.71 TO 1220, THEN AS ASSIGNED BY ATC, EXPECT VECTORS TO DENNT. THENCE...  
 TAKEOFF RWY 18: CLIMB HEADING 180.95 TO 1220, THEN AS ASSIGNED BY ATC, EXPECT VECTORS TO DENNT. THENCE...  
 TAKEOFF RWY 27: CLIMB HEADING 270.15 TO 1220, THEN AS ASSIGNED BY ATC, EXPECT VECTORS TO DENNT. THENCE...  
 TAKEOFF RWY 33: CLIMB HEADING 327.71 TO 1220, THEN AS ASSIGNED BY ATC, EXPECT VECTORS TO DENNT. THENCE...  
 TAKEOFF RWY 36: CLIMB HEADING 000.95 TO 1220, THEN AS ASSIGNED BY ATC, EXPECT VECTORS TO DENNT. THENCE...

**CHICAGO/WEST CHICAGO/DUPAGE (KDPA)**

TAKEOFF RWY 2L, 2R: CLIMB HEADING 015.01 TO 1260, THEN AS ASSIGNED BY ATC, EXPECT VECTORS TO DENNT. THENCE...  
 TAKEOFF RWY 10: CLIMB HEADING 097.01 TO 1260, THEN AS ASSIGNED BY ATC, EXPECT VECTORS TO DENNT. THENCE...  
 TAKEOFF RWY 15: CLIMB HEADING 148.56 TO 1260, THEN AS ASSIGNED BY ATC, EXPECT VECTORS TO DENNT. THENCE...  
 TAKEOFF RWY 20L: CLIMB HEADING 195.01 TO 1260, THEN AS ASSIGNED BY ATC, EXPECT VECTORS TO DENNT. THENCE...  
 TAKEOFF RWY 20R: CLIMB HEADING 195.02 TO 1260, THEN AS ASSIGNED BY ATC, EXPECT VECTORS TO DENNT. THENCE...  
 TAKEOFF RWY 28: CLIMB HEADING 277.02 TO 1260, THEN AS ASSIGNED BY ATC, EXPECT VECTORS TO DENNT. THENCE...  
 TAKEOFF RWY 33: CLIMB HEADING 328.57 TO 1260, THEN AS ASSIGNED BY ATC, EXPECT VECTORS TO DENNT. THENCE...

**GARY/CHICAGO INTL (KGYI)**

TAKEOFF RWY 2: CLIMB HEADING 022.19 TO 1100, THEN AS ASSIGNED BY ATC, EXPECT VECTORS TO DENNT. THENCE...  
 TAKEOFF RWY 12: CLIMB HEADING 125.15 TO 1100, THEN AS ASSIGNED BY ATC, EXPECT VECTORS TO DENNT. THENCE...  
 TAKEOFF RWY 20: CLIMB HEADING 202.20 TO 1100, THEN AS ASSIGNED BY ATC, EXPECT VECTORS TO DENNT. THENCE...  
 TAKEOFF RWY 30: CLIMB HEADING 305.16 TO 1100, THEN AS ASSIGNED BY ATC, EXPECT VECTORS TO DENNT. THENCE...

**CHICAGO/LEWIS UNIVERSITY (KLOT)**

TAKEOFF RWY 2: CLIMB HEADING 014.73 TO 1180, THEN AS ASSIGNED BY ATC, EXPECT VECTORS TO DENNT. THENCE...  
 TAKEOFF RWY 9: CLIMB HEADING 088.73 TO 1180, THEN AS ASSIGNED BY ATC, EXPECT VECTORS TO DENNT. THENCE...  
 TAKEOFF RWY 20: CLIMB HEADING 194.73 TO 1180, THEN AS ASSIGNED BY ATC, EXPECT VECTORS TO DENNT. THENCE...  
 TAKEOFF RWY 27: CLIMB HEADING 268.74 TO 1180, THEN AS ASSIGNED BY ATC, EXPECT VECTORS TO DENNT. THENCE...

...ON TRACK 181.22 TO DARCY, THEN ON (TRANSITION). MAINTAIN 3000. EXPECT FILED ALTITUDE 10 MINUTES AFTER DEPARTURE.

**TRANSITION ROUTES (GRAPHIC DEPICTION ONLY):**

Transition Name	Transition Computer Codes	From FIX/NAVAID	To FIX/NAVAID	Course	Distance	MEA	MOCA	Crossing Altitudes/Fixes
DONVE	DARCY3.DONVE	DARCY	DREGS	TRACK 175.16	53.37	5000	2400	
		DREGS	DONVE	TRACK 183.44	19.82	5000	2200	

**U.S. DEPARTMENT of TRANSPORTATION – FEDERAL AVIATION ADMINISTRATION**  
**GRAPHIC DEPARTURE PROCEDURE (DP)**

Bearings, headings, courses, tracks, and radials are magnetic. Elevation and altitudes are in feet MSL. Altitudes are minimum altitudes unless otherwise indicated. Ceilings are in feet above airport elevation.  
 Distances are in nautical miles. Visibilities are in statute miles or feet RVR unless otherwise indicated. Graphic depictions attached.

DP Name	Number	DP Computer Code	Superseded Number	Dated	Effective Date
DARCY	THREE	DARCY3.DARCY	TWO	03/07/2013	22 AUG 2013
SCOTO	DARCY3.SCOTO	DARCY	DREGS	TRACK 175.16	53.37 5000 2400
		DREGS	DUMGE	TRACK 155.01	22.02 5000 2100
		DUMGE	SCOTO	TRACK 153.59	55.10 5000 2200

**PROCEDURAL DATA NOTES/TAKEOFF MINIMUMS:**

NOTE: RADAR REQUIRED.

NOTE: DME/DME/IRU OR GPS REQUIRED.

NOTE: RNAV 1.

NOTE: TURBOJET DEPARTURES MAINTAIN 250 KIAS UNTIL ADVISED BY ATC.

**TAKEOFF MINIMUMS:**

**CHICAGO/AURORA MUNI (KARR)**

RWY 9, 15, 18, 27, 33, 36 STANDARD.

**CHICAGO/WEST CHICAGO/DUPAGE (KDPA)**

RWY 2L, 2R, 10, 15, 20L, 20R, 28, 33 STANDARD.

**GARY/CHICAGO INTL (KGGY)**

RWY 12, 30 STANDARD. RWY 2, STANDARD WITH MINIMUM CLIMB OF 321 FT PER NM TO 900. RWY 20, STANDARD WITH MINIMUM CLIMB OF 256 FT PER NM TO 1300.

**CHICAGO/LEWIS UNIVERSITY (KLOT)**

RWY 9, 20, 27 STANDARD. RWY 2, STANDARD WITH MINIMUM CLIMB OF 420 FT PER NM TO 1200.

**TAKEOFF OBSTACLES NOTES:**

**AURORA MUNI (KARR):**

NOTE: RWY 9, VEHICLE ON ROAD 794 FT FROM DER, RIGHT AND LEFT OF CENTERLINE, 15 FT AGL/734 FT MSL. MULTIPLE TREES BEGINNING 4126 FT FROM DER, ON CENTERLINE, UP TO 100 FT AGL/819 FT MSL.

NOTE: RWY 15, MULTIPLE TREES, POWER POLES, AND ROAD BEGINNING 900 FT FROM DER, 47 FT RIGHT OF CENTERLINE, UP TO 100 FT AGL/809 FT MSL. POWER POLE 1313 FT FROM DER, 47 FT LEFT OF CENTERLINE, 34 FT AGL/733 FT MSL.

NOTE: RWY 18, MULTIPLE POWER POLES BEGINNING 1218 FT FROM DER, 190 FT RIGHT OF CENTERLINE, UP TO 35 FT AGL/734 FT MSL. MULTIPLE TREES BEGINNING 3646 FT FROM DER, ON CENTERLINE, UP TO 100 FT AGL/809 FT MSL.

NOTE: RWY 27, VEHICLE ON ROAD 1020 FT FROM DER, RIGHT AND LEFT OF CENTERLINE, 15 FT AGL/734 FT MSL.

NOTE: RWY 33, MULTIPLE TREES AND ROAD BEGINNING 788 FT FROM DER, 238 FT RIGHT OF CENTERLINE, UP TO 79 FT AGL/788 FT MSL. ROAD AND POWER POLE BEGINNING 577 FT FROM DER, 137 FT LEFT OF CENTERLINE, UP TO 38 FT AGL/747 FT MSL.

NOTE: RWY 36, TREE, POLE, AND FENCE BEGINNING 31 FT FROM DER, 169 FT LEFT OF CENTERLINE, UP TO 35 FT AGL/734 FT MSL. VEHICLE ON ROAD BEGINNING 1099 FT FROM DER, RIGHT AND LEFT OF CENTERLINE, 15 FT AGL/734 FT MSL.

**DUPAGE (KDPA):**

NOTE: RWY 2L, AIRFIELD LIGHT 9 FT FROM DER, 61 FT LEFT OF CENTERLINE, 1 FT AGL/756 FT MSL. POLES BEGINNING 1075 FT FROM DER, 622 FT LEFT OF CENTERLINE, UP TO 44 FT AGL/799 FT MSL. TREES BEGINNING 1252 FT FROM DER, 368 FT LEFT OF CENTERLINE, UP TO 104 FT AGL/856 FT MSL. FENCE 1672 FT FROM DER, 807 FT LEFT OF CENTERLINE, 42 FT AGL/800 FT MSL.

**U.S. DEPARTMENT of TRANSPORTATION – FEDERAL AVIATION ADMINISTRATION**  
**GRAPHIC DEPARTURE PROCEDURE (DP)**

Bearings, headings, courses, tracks, and radials are magnetic. Elevation and altitudes are in feet MSL. Altitudes are minimum altitudes unless otherwise indicated. Ceilings are in feet above airport elevation.  
 Distances are in nautical miles. Visibilities are in statute miles or feet RVR unless otherwise indicated. Graphic depictions attached.

DP Name	Number	DP Computer Code	Superseded Number	Dated	Effective Date
DARCY	THREE	DARCY3.DARCY	TWO	03/07/2013	22 AUG 2013

**NOTE: RWY 10, REIL LIGHTS BEGINNING 39 FT FROM DER, 77 FT LEFT AND RIGHT OF CENTERLINE, UP TO 3 FT AGL/757 FT MSL. BUILDINGS BEGINNING 630 FT FROM DER, 134 FT LEFT AND RIGHT OF CENTERLINE, UP TO 45 FT AGL/801 FT MSL. ANTENNAE BEGINNING 699 FT FROM DER, 632 FT LEFT OF CENTERLINE, UP TO 36 FT AGL/792 FT MSL. MULTIPLE TREES BEGINNING 845 FT FROM DER, 1 FT LEFT AND RIGHT OF CENTERLINE, UP TO 93 FT AGL/849 FT MSL. STACK 1638 FT FROM DER, 185 FT LEFT OF CENTERLINE, 54 FT AGL/810 FT MSL.**

**NOTE: RWY 15, FENCE 62 FT FROM DER, 385 FT LEFT OF CENTERLINE, 5 FT AGL/763 FT MSL. MULTIPLE TREES BEGINNING 3 FT FROM DER, 9 FT LEFT AND RIGHT OF CENTERLINE, UP TO 95 FT AGL/850 FT MSL. VEHICLE ON ROAD BEGINNING 89 FT FROM DER, 9 FT LEFT AND RIGHT OF CENTERLINE, UP TO 15 FT AGL/773 FT MSL. BUILDINGS BEGINNING 417 FT FROM DER, 481 FT RIGHT OF CENTERLINE, UP TO 37 FT AGL/795 FT MSL. POLES BEGINNING 804 FT FROM DER, 235 FT RIGHT OF CENTERLINE, UP TO 36 FT AGL/794 FT MSL. ANTENNA 1.1 NM FROM DER, 1676 FT LEFT OF CENTERLINE, 169 FT AGL/927 FT MSL.**

**NOTE: RWY 20L, FENCE 209 FT FROM DER, 547 FT LEFT OF CENTERLINE, 7 FT AGL/757 FT MSL. MULTIPLE TREES BEGINNING 407 FT FROM DER, 392 FT LEFT OF CENTERLINE, UP TO 111 FT AGL/847 FT MSL. SIGN 22 FT FROM DER, 351 FT RIGHT OF CENTERLINE, 2 FT AGL/752 FT MSL.**

**NOTE: RWY 20R, TREE 645 FT FROM DER, 619 FT RIGHT OF CENTERLINE, 17 FT AGL/768 FT MSL.**

**NOTE: RWY 28, MULTIPLE TREES BEGINNING 1228 FT FROM DER, 683 FT LEFT AND RIGHT OF CENTERLINE, UP TO 84 FT AGL/837 FT MSL. SIGN 39 FT FROM DER, 455 FT RIGHT OF CENTERLINE, 3 FT AGL/756 FT MSL. BUILDING 974 FT FROM DER, 681 FT RIGHT OF CENTERLINE, 28 FT AGL/781 FT MSL.**

**NOTE: RWY 33, REIL LIGHTS BEGINNING 51 FT FROM DER, 95 FT LEFT AND RIGHT OF CENTERLINE, UP TO 2 FT AGL/760 FT MSL. MULTIPLE POLES BEGINNING 407 FT FROM DER, 154 FT LEFT AND RIGHT OF CENTERLINE, UP TO 61 FT AGL/817 FT MSL. OL ON POLES BEGINNING 532 FT FROM DER, 120 FT LEFT AND RIGHT OF CENTERLINE, UP TO 39 FT AGL/796 FT MSL. VEHICLE ON ROAD BEGINNING 460 FT FROM DER, 439 FT RIGHT OF CENTERLINE, UP TO 15 FT AGL/772 FT MSL. MULTIPLE TREES BEGINNING 335 FT FROM DER, 11 FT LEFT AND RIGHT OF CENTERLINE, UP TO 110 FT AGL/859 FT MSL. FENCE 346 FT FROM DER, 575 FT LEFT OF CENTERLINE, 48 FT AGL/800 FT MSL. BUILDINGS BEGINNING 195 FT FROM DER, 425 FT RIGHT OF CENTERLINE, UP TO 21 FT AGL/778 FT MSL.**

**GARY/CHICAGO INTL (KGYG):**

**NOTE: RWY 2, STACKS, TOWERS, BUILDINGS, TREES, POLE, AND VEHICLE ON ROAD BEGINNING 554 FT FROM DER, 82 FT RIGHT OF CENTERLINE, UP TO 201 FT AGL/791 FT MSL. STACKS, TOWERS, AND TREE BEGINNING 1489 FT FROM DER, 236 FT LEFT OF CENTERLINE, UP TO 231 FT AGL/823 FT MSL. VEHICLE ON ROAD 571 FT FROM DER, ON CENTERLINE, 15 FT AGL/605 FT MSL.**

**NOTE: RWY 12, TREES AND TOWER BEGINNING 1617 FT FROM DER, 451 FT LEFT OF CENTERLINE, UP TO 105 FT AGL/699 FT MSL. TREES AND POLES BEGINNING 1681 FT FROM DER, 238 FT RIGHT OF CENTERLINE, UP TO 75 FT AGL/674 FT MSL.**

**NOTE: RWY 20, TREES, STACKS, LIGHTS, AND POLE BEGINNING 203 FT FROM DER, 108 FT RIGHT OF CENTERLINE, UP TO 152 FT AGL/747 FT MSL. TREES AND LIGHTS BEGINNING 883 FT FROM DER, 26 FT LEFT OF CENTERLINE, UP TO 69 FT AGL/658 FT MSL. VEHICLE ON ROAD, 1048 FT FROM DER, ON CENTERLINE, 17 FT AGL/631 FT MSL.**

**NOTE: RWY 30, LIGHT ON LOCALIZER ANTENNA 130 FT FROM DER, ON CENTERLINE, 10 FT AGL/596 FT MSL. TREES, TOWERS, ANTENNAS, AND RAILROAD BEGINNING 139 FT FROM DER, 5 FT RIGHT OF CENTERLINE, UP TO 106 FT AGL/695 FT MSL. RAILROAD, TOWER, AND VEHICLE ON ROAD BEGINNING 194 FT FROM DER, 7 FT LEFT OF CENTERLINE, UP TO 81 FT AGL/670 FT MSL.**

**LEWIS UNIVERSITY (KLOT):**

**NOTE: RWY 2, MULTIPLE TOWERS, TREE, AND STACK BEGINNING 1196 FT FROM DER, 49 FT LEFT OF CENTERLINE, UP TO 213 FT AGL/876 FT MSL.**

**NOTE: RWY 9, MULTIPLE TREES AND BUILDING BEGINNING 243 FT FROM DER, 358 FT LEFT OF CENTERLINE, UP TO 64 FT AGL/735 FT MSL. MULTIPLE LIGHT POLES, TREES, AND SIGN BEGINNING 112 FT FROM DER, 174 FT RIGHT OF CENTERLINE, UP TO 77 FT AGL/721 FT MSL.**

**NOTE: RWY 27, MULTIPLE TREES BEGINNING 1143 FT FROM DER, 634 FT RIGHT OF CENTERLINE, UP TO 70 FT AGL/723 FT MSL.**

**CONTROLLING OBSTACLES:**

**GARY/CHICAGO INTL (KGYG)**

**RWY 2: 790 FT MSL SMOKE STACK 413757.65N/0872408.23W, 823 FT MSL STACK 413821.50N/0872425.23W.**

**RWY 20: 747 FT MSL STACK 413605.00N/0872548.00W, 1096 FT MSL TOWER 413357.00N/0872505.00W.**

**LEWIS UNIVERSITY (KLOT)**

**RWY 2: 1087 FT MSL STACK 413759.00N/0880344.00W, 875 FT MSL TOWER 413755.00N/0880541.00W, 876 FT MSL TOWER 413755.97N/0880541.31W.**



U.S. DEPARTMENT of TRANSPORTATION – FEDERAL AVIATION ADMINISTRATION  
**GRAPHIC DEPARTURE PROCEDURE (DP)**

Bearings, headings, courses, tracks, and radials are magnetic. Elevation and altitudes are in feet MSL. Altitudes are minimum altitudes unless otherwise indicated. Ceilings are in feet above airport elevation.  
Distances are in nautical miles. Visibilities are in statute miles or feet RVR unless otherwise indicated. Graphic depictions attached.

DP Name	Number	DP Computer Code	Superseded Number	Dated	Effective Date
DARCY	THREE	DARCY3.DARCY	TWO	03/07/2013	22 AUG 2013

**LOST COMMUNICATIONS PROCEDURES:****ADDITIONAL FLIGHT DATA:**

REFERENCE MAG VAR: KDPX 1W EPOCH YR: 1985.  
DME/DME ASSESSMENT: SAT (RNP 2.0)  
CHART: MEA/MOCA FROM DENNT TO DARCY, 5000/2200.

**PILOT NAVIGATION AREA:**

7NM ARC CENTERED ON DENNT (IF), CW  
FROM: POINT A (BEARING 136 DEGREES TO DENNT)  
TO: POINT B (BEARING 226 DEGREES TO DENNT)  
MINIMUM ALTITUDE – 5000

**AIRPORTS SERVED:**

AURORA MUNI  
DUPAGE  
GARY/CHICAGO INTL  
LEWIS UNIVERSITY

CHICAGO/AURORA, IL  
CHICAGO/WEST CHICAGO, IL  
GARY, IN  
CHICAGO/ROMEOVILLE, IL

**COMMUNICATIONS:**

ATIS, GND CON, TWR, DEP CON

**FIXES AND/OR NAVAIDS:**

## DEPARTURE (DATA RECORD)

DP Name	Number	DP Computer Code	Superseded Number	Dated	Effective Date
DARCY	THREE	DARCY3.DARCY	TWO	03/07/2013	22 AUG 2013

FIX/NAVAID	LAT/LONG	C	FO/FB	LEG TYPE	TC	DIST (NM)	ALTITUDE	SPEED	REMARKS
<b>CHICAGO/AURORA MUNI (KARR)</b>									
RW09 (AER)	414612.55N/0882907.31W	N	-	-	-	-			
1220 MSL	-	-	-	VA	089.14	-			
-	-	-	-	VM	089.14	-			
DENNT	412509.00N/0874329.00W	Y	FB	DF	-	-			
DARCY	411208.00N/0874333.00W	Y	FB	TF	180.22	13.01			
RW15 (AER)	414648.10N/0882910.16W	N	-	-	-	-			
1220 MSL	-	-	-	VA	146.71	-			
-	-	-	-	VM	146.71	-			
DENNT	412509.00N/0874329.00W	Y	FB	DF	-	-			
DARCY	411208.00N/0874333.00W	Y	FB	TF	180.22	13.01			
RW18 (AER)	414635.69N/0882817.82W	N	-	-	-	-			
1220 MSL	-	-	-	VA	179.95	-			
-	-	-	-	VM	179.95	-			
DENNT	412509.00N/0874329.00W	Y	FB	DF	-	-			
DARCY	411208.00N/0874333.00W	Y	FB	TF	180.22	13.01			
RW27 (AER)	414613.51N/0882741.52W	N	-	-	-	-			
1220 MSL	-	-	-	VA	269.15	-			
-	-	-	-	VM	269.15	-			
DENNT	412509.00N/0874329.00W	Y	FB	DF	-	-			
DARCY	411208.00N/0874333.00W	Y	FB	TF	180.22	13.01			
RW33 (AER)	414602.66N/0882830.30W	N	-	-	-	-			
1220 MSL	-	-	-	VA	326.71	-			
-	-	-	-	VM	326.71	-			
DENNT	412509.00N/0874329.00W	Y	FB	DF	-	-			
DARCY	411208.00N/0874333.00W	Y	FB	TF	180.22	13.01			

## DEPARTURE (DATA RECORD)

DP Name	Number	DP Computer Code	Superseded Number	Dated	Effective Date
DARCY	THREE	DARCY3.DARCY	TWO	03/07/2013	22 AUG 2013

FIX/NAVAID	LAT/LONG	C	FO/FB	LEG TYPE	TC	DIST (NM)	ALTITUDE	SPEED	REMARKS
RW36 (AER)	414604.10N/0882817.78W	N	-	-	-	-			
1220 MSL	-	-	-	VA	359.95	-			
-	-	-	-	VM	359.95	-			
DENNT	412509.00N/0874329.00W	Y	FB	DF	-	-			
DARCY	411208.00N/0874333.00W	Y	FB	TF	180.22	13.01			
<b>CHICAGO/WEST CHICAGO/DUPAGE (KDPA)</b>									
RW02L (AER)	415338.51N/0881512.77W	N	-	-	-	-			
1260 MSL	-	-	-	VA	014.01	-			
-	-	-	-	VM	014.01	-			
DENNT	412509.00N/0874329.00W	Y	FB	DF	-	-			
DARCY	411208.00N/0874333.00W	Y	FB	TF	180.22	13.01			
RW02R (AER)	415336.07N/0881459.71W	N	-	-	-	-			
1260 MSL	-	-	-	VA	014.01	-			
-	-	-	-	VM	014.01	-			
DENNT	412509.00N/0874329.00W	Y	FB	DF	-	-			
DARCY	411208.00N/0874333.00W	Y	FB	TF	180.22	13.01			
RW10 (AER)	415448.52N/0881530.55W	N	-	-	-	-			
1260 MSL	-	-	-	VA	096.01	-			
-	-	-	-	VM	096.01	-			
DENNT	412509.00N/0874329.00W	Y	FB	DF	-	-			
DARCY	411208.00N/0874333.00W	Y	FB	TF	180.22	13.01			
RW15 (AER)	415509.20N/0881444.64W	N	-	-	-	-			
1260 MSL	-	-	-	VA	147.56	-			
-	-	-	-	VM	147.56	-			
DENNT	412509.00N/0874329.00W	Y	FB	DF	-	-			
DARCY	411208.00N/0874333.00W	Y	FB	TF	180.22	13.01			

## DEPARTURE (DATA RECORD)

DP Name	Number	DP Computer Code	Superseded Number	Dated	Effective Date
DARCY	THREE	DARCY3.DARCY	TWO	03/07/2013	22 AUG 2013

FIX/NAVAID	LAT/LONG	C	FO/FB	LEG TYPE	TC	DIST (NM)	ALTITUDE	SPEED	REMARKS
RW20L (AER)	415437.83N/0881439.08W	N	-	-	-	-			
1260 MSL	-	-	-	VA	194.01	-			
-	-	-	-	VM	194.01	-			
DENNT	412509.00N/0874329.00W	Y	FB	DF	-	-			
DARCY	411208.00N/0874333.00W	Y	FB	TF	180.22	13.01			
RW20R (AER)	415451.08N/0881448.52W	N	-	-	-	-			
1260 MSL	-	-	-	VA	194.02	-			
-	-	-	-	VM	194.02	-			
DENNT	412509.00N/0874329.00W	Y	FB	DF	-	-			
DARCY	411208.00N/0874333.00W	Y	FB	TF	180.22	13.01			
RW28 (AER)	415443.60N/0881428.07W	N	-	-	-	-			
1260 MSL	-	-	-	VA	276.02	-			
-	-	-	-	VM	276.02	-			
DENNT	412509.00N/0874329.00W	Y	FB	DF	-	-			
DARCY	411208.00N/0874333.00W	Y	FB	TF	180.22	13.01			
RW33 (AER)*	415442.45N/0881421.88W*	N	-	-	-	-			*DISPL THLD (190 FT)
1260 MSL	-	-	-	VA	327.57	-			
-	-	-	-	VM	327.57	-			
DENNT	412509.00N/0874329.00W	Y	FB	DF	-	-			
DARCY	411208.00N/0874333.00W	Y	FB	TF	180.22	13.01			
<b><u>GARY/CHICAGO INTL (KGGY)</u></b>									
RW02 (AER)	413644.22N/0872506.30W	N	-	-	-	-			
1100 MSL	-	-	-	VA	021.19	-			CG 321 FT PER NM TO 900
-	-	-	-	VM	021.19	-			
DENNT	412509.00N/0874329.00W	Y	FB	DF	-	-			
DARCY	411208.00N/0874333.00W	Y	FB	TF	180.22	13.01			

## DEPARTURE (DATA RECORD)

DP Name		Number		DP Computer Code			Superseded Number	Dated	Effective Date
DARCY		THREE		DARCY3.DARCY			TWO	03/07/2013	22 AUG 2013
FIX/NAVAID	LAT/LONG	C	FO/FB	LEG TYPE	TC	DIST (NM)	ALTITUDE	SPEED	REMARKS
RW12 (AER)*	413712.88N/0872510.36W*	N	-	-	-	-			*DISPL THLD (713 FT)
1100 MSL	-	-	-	VA	124.15	-			
-	-	-	-	VM	124.15	-			
DENNT	412509.00N/0874329.00W	Y	FB	DF	-	-			
DARCY	411208.00N/0874333.00W	Y	FB	TF	180.22	13.01			
RW20 (AER)	413717.41N/0872449.15W	N	-	-	-	-			
1100 MSL	-	-	-	VA	201.20	-			CG.256 FT PER NM TO 1300
-	-	-	-	VM	201.20	-			
DENNT	412509.00N/0874329.00W	Y	FB	DF	-	-			
DARCY	411208.00N/0874333.00W	Y	FB	TF	180.22	13.01			
RW30 (AER)	413638.00N/0872401.85W	N	-	-	-	-			
1100 MSL	-	-	-	VA	304.16	-			
-	-	-	-	VM	304.16	-			
DENNT	412509.00N/0874329.00W	Y	FB	DF	-	-			
DARCY	411208.00N/0874333.00W	Y	FB	TF	180.22	13.01			
<b><u>CHICAGO/LEWIS UNIVERSITY (KLOT)</u></b>									
RW02 (AER)	413557.23N/0880603.23W	N	-	-	-	-			
1180 MSL	-	-	-	VA	013.73	-			CG 420 FT PER NM TO 1200
-	-	-	-	VM	013.73	-			
DENNT	412509.00N/0874329.00W	Y	FB	DF	-	-			
DARCY	411208.00N/0874333.00W	Y	FB	TF	180.22	13.01			
RW09 (AER)	413628.93N/0880616.00W	N	-	-	-	-			
1180 MSL	-	-	-	VA	087.73	-			
-	-	-	-	VM	087.73	-			
DENNT	412509.00N/0874329.00W	Y	FB	DF	-	-			
DARCY	411208.00N/0874333.00W	Y	FB	TF	180.22	13.01			



**DEPARTURE (DATA RECORD)**

DP Name		Number	DP Computer Code				Superseded Number	Dated	Effective Date
DARCY		THREE	DARCY3.DARCY				TWO	03/07/2013	22 AUG 2013
FIX/NAVAID	LAT/LONG	C	FO/FB	LEG TYPE	TC	DIST (NM)	ALTITUDE	SPEED	REMARKS
RW20 (AER)	413659.61N/0880542.92W	N	-	-	-	-			
1180 MSL	-	-	-	VA	193.73	-			
-	-	-	-	VM	193.73	-			
DENNT	412509.00N/0874329.00W	Y	FB	DF	-	-			
DARCY	411208.00N/0874333.00W	Y	FB	TF	180.22	13.01			
RW27 (AER)*	413631.08N/0880503.66W*	N	-	-	-	-			*DISPL THLD (196 FT)
1180 MSL	-	-	-	VA	267.74	-			
-	-	-	-	VM	267.74	-			
DENNT	412509.00N/0874329.00W	Y	FB	DF	-	-			
DARCY	411208.00N/0874333.00W	Y	FB	TF	180.22	13.01			
DARCY	411208.00N/0874333.00W	Y	-	IF	-	-			DARCY3.DONVE
DREGS	401900.00N/0873627.00W	Y	FB	TF	174.16	53.37			
DONVE	395911.00N/0873733.00W	Y	FB	TF	182.44	19.82			
DARCY	411208.00N/0874333.00W	Y	-	IF	-	-			DARCY3.SCOTO
DREGS	401900.00N/0873627.00W	Y	FB	TF	174.16	53.37			
DUMGE	395911.00N/0872354.00W	Y	FB	TF	154.01	22.02			
SCOTO	391008.93N/0865116.99W	Y	FB	TF	152.59	55.10			

## DEPARTURE (DATA RECORD)

DP Name	Number	DP Computer Code	Superseded Number	Dated	Effective Date
DARCY	THREE	DARCY3.DARCY	TWO	03/07/2013	22 AUG 2013

ARINC PACKET - 424-18 - SID

[illegible][illegible][illegible][illegible]

**DEPARTURE (DATA RECORD)**

DP Name	Number	DP Computer Code	Superseded Number	Dated	Effective Date
DARCY	THREE	DARCY3.DARCY	TWO	03/07/2013	22 AUG 2013

SUSAP KLOTK5GRW02	0065000157	N41355723W088060323-0200	+0173900679000037100RIJQH0
SUSAP KLOTK5GRW09	0056960897	N41362893W088061600-0200	+0171900673000041075RILOTO
SUSAP KLOTK5GRW20	0065001957	N41365961W088054292+0200	+0169900666000040100R
SUSAP KLOTK5GRW27	0056962697	N41363108W088050366+0200	+0169800666019635075R

## DEPARTURE (DATA RECORD)

DP Name	Number	DP Computer Code	Superseded Number	Dated	Effective Date
DARCY	THREE	DARCY3.DARCY	TWO	03/07/2013	22 AUG 2013

## ARINC SUMMARY - 424-18 - SID

ROUTES	TRANSITION	FIX	SEQ	USE	PATH	TURN	FO/FB	RNP	MAG(TRUE)	DISTANCE	ALTITUDE	SPEED
	RW02		010		VA		FB		014.7()		AA 01180	
	RW02		020		VM		FB		014.7()			
	RW02	DENNT	030		DF		FB	1.0				
	RW02	DARCY	040		TF		FB	1.0				
	RW09		010		VA		FB		088.7()		AA 01180	
	RW09		020		VM		FB		088.7()			
	RW09	DENNT	030		DF		FB	1.0				
	RW09	DARCY	040		TF		FB	1.0				
	RW20		010		VA		FB		194.7()		AA 01180	
	RW20		020		VM		FB		194.7()			
	RW20	DENNT	030		DF		FB	1.0				
	RW20	DARCY	040		TF		FB	1.0				
	RW27		010		VA		FB		268.7()		AA 01180	
	RW27		020		VM		FB		268.7()			
	RW27	DENNT	030		DF		FB	1.0				
	RW27	DARCY	040		TF		FB	1.0				
	DONVE	DARCY	010		IF		FB					
	DONVE	DREGS	020		TF		FB	1.0				
	DONVE	DONVE	030		TF		FB	1.0				
	SCOTO	DARCY	010		IF		FB					
	SCOTO	DREGS	020		TF		FB	1.0				
	SCOTO	DUMGE	030		TF		FB	1.0				
	SCOTO	SCOTO	040		TF		FB	1.0				

## POINT DATA

WAYPOINT	LAT IN SECS	LONG IN SECS	LAT IN MINS	LONG IN MINS
DARCY	N411208.00	W0874333.00	N4112.133	W08743.550
DENNT	N412509.00	W0874329.00	N4125.150	W08743.483
DONVE	N395911.00	W0873733.00	N3959.183	W08737.550
DREGS	N401900.00	W0873627.00	N4019.000	W08736.450
DUMGE	N395911.00	W0872354.00	N3959.183	W08723.900
SCOTO	N391008.93	W0865116.99	N3910.149	W08651.283
RW02	N413557.23	W0880603.23	N4135.954	W08806.054
RW09	N413628.93	W0880616.00	N4136.482	W08806.267
RW20	N413659.61	W0880542.92	N4136.994	W08805.715
RW27	N413631.08	W0880503.66	N4136.518	W08805.061

## RUNWAY DATA

RWY	THRESHOLD ELEVATION	TCH
RW02	00679	37
RW09	00673	41

**DEPARTURE (DATA RECORD)**

DP Name	Number	DP Computer Code	Superseded Number	Dated	Effective Date
DARCY	THREE	DARCY3.DARCY	TWO	03/07/2013	22 AUG 2013

RW20	00666	40
RW27	00666	35

### DEPARTURE (DATA RECORD)

DP Name	Number	DP Computer Code	Superseded Number	Dated	Effective Date
DARCY	THREE	DARCY3.DARCY	TWO	03/07/2013	22 AUG 2013

ARINC PACKET - 424-18 - SID

[illegible][illegible][illegible][illegible]



**DEPARTURE (DATA RECORD)**

DP Name	Number	DP Computer Code	Superseded Number	Dated	Effective Date
DARCY	THREE	DARCY3.DARCY	TWO	03/07/2013	22 AUG 2013

-----  
SUSAP KGYK5GRW02 0036030232 N41364422W087250630+0000 +0146100589000035100V  
SUSAP KGYK5GRW12 0070031262 N41371288W087251036+0000 +0146500591071350150R  
SUSAP KGYK5GRW20 0036032032 N41371741W087244915+0000 +0146200589000050100R  
SUSAP KGYK5GRW30 0070033062 N41363800W087240185+0000 +0146800591000053150IIGYY1

## DEPARTURE (DATA RECORD)

DP Name	Number	DP Computer Code	Superseded Number	Dated	Effective Date
DARCY	THREE	DARCY3.DARCY	TWO	03/07/2013	22 AUG 2013

## ARINC SUMMARY - 424-18 - SID

ROUTES	TRANSITION	FIX	SEQ	USE	PATH	TURN	FO/FB	RNP	MAG(TRUE)	DISTANCE	ALTITUDE	SPEED
	RW02		010		VA		FB		022.2()		AA 01100	
	RW02		020		VM		FB		022.2()			
	RW02	DENNT	030		DF		FB	1.0				
	RW02	DARCY	040		TF		FB	1.0				
	RW12		010		VA		FB		125.2()		AA 01100	
	RW12		020		VM		FB		125.2()			
	RW12	DENNT	030		DF		FB	1.0				
	RW12	DARCY	040		TF		FB	1.0				
	RW20		010		VA		FB		202.2()		AA 01100	
	RW20		020		VM		FB		202.2()			
	RW20	DENNT	030		DF		FB	1.0				
	RW20	DARCY	040		TF		FB	1.0				
	RW30		010		VA		FB		305.2()		AA 01100	
	RW30		020		VM		FB		305.2()			
	RW30	DENNT	030		DF		FB	1.0				
	RW30	DARCY	040		TF		FB	1.0				
	DONVE	DARCY	010		IF		FB					
	DONVE	DREGS	020		TF		FB	1.0				
	DONVE	DONVE	030		TF		FB	1.0				
	SCOTO	DARCY	010		IF		FB					
	SCOTO	DREGS	020		TF		FB	1.0				
	SCOTO	DUMGE	030		TF		FB	1.0				
	SCOTO	SCOTO	040		TF		FB	1.0				

## POINT DATA

WAYPOINT	LAT IN SECS	LONG IN SECS	LAT IN MINS	LONG IN MINS
DARCY	N411208.00	W0874333.00	N4112.133	W08743.550
DENNT	N412509.00	W0874329.00	N4125.150	W08743.483
DONVE	N395911.00	W0873733.00	N3959.183	W08737.550
DREGS	N401900.00	W0873627.00	N4019.000	W08736.450
DUMGE	N395911.00	W0872354.00	N3959.183	W08723.900
SCOTO	N391008.93	W0865116.99	N3910.149	W08651.283
RW02	N413644.22	W0872506.30	N4136.737	W08725.105
RW12	N413712.88	W0872510.36	N4137.215	W08725.173
RW20	N413717.41	W0872449.15	N4137.290	W08724.819
RW30	N413638.00	W0872401.85	N4136.633	W08724.031

## RUNWAY DATA

RWY	THRESHOLD ELEVATION	TCH
RW02	00589	35
RW12	00591	50

**DEPARTURE (DATA RECORD)**

DP Name	Number	DP Computer Code	Superseded Number	Dated	Effective Date
DARCY	THREE	DARCY3.DARCY	TWO	03/07/2013	22 AUG 2013

RW20	00589	50
RW30	00591	53

## DEPARTURE (DATA RECORD)

DP Name	Number	DP Computer Code	Superseded Number	Dated	Effective Date
DARCY	THREE	DARCY3.DARCY	TWO	03/07/2013	22 AUG 2013

ARINC PACKET - 424-18 - SID

[illegible][illegible][illegible]

## DEPARTURE (DATA RECORD)

DP Name	Number	DP Computer Code	Superseded Number	Dated	Effective Date
DARCY	THREE	DARCY3.DARCY	TWO	03/07/2013	22 AUG 2013

SUSAP	KDPAK5DDARCY36DONVE	030DONVEK5EA0EE	010TF	
SUSAP	KDPAK5DDARCY36SCOTO	010DARCYK5EA0E	IF	18000
SUSAP	KDPAK5DDARCY36SCOTO	020DREGSK5EA0E	010TF	
SUSAP	KDPAK5DDARCY36SCOTO	030DUMGEK5EA0E	010TF	
SUSAP	KDPAK5DDARCY36SCOTO	040SCOTOK5EA0EE	010TF	

[illegible]

## DEPARTURE (DATA RECORD)

DP Name	Number	DP Computer Code	Superseded Number	Dated	Effective Date
DARCY	THREE	DARCY3.DARCY	TWO	03/07/2013	22 AUG 2013

## ARINC SUMMARY - 424-18 - SID

ROUTES	TRANSITION	FIX	SEQ	USE	PATH	TURN	FO/FB	RNP	MAG(TRUE)	DISTANCE	ALTITUDE	SPEED
	RW02B		010		VA		FB		015.0()		AA 01260	
	RW02B		020		VM		FB		015.0()			
	RW02B	DENNT	030		DF		FB	1.0				
	RW02B	DARCY	040		TF		FB	1.0				
	RW10		010		VA		FB		097.0()		AA 01260	
	RW10		020		VM		FB		097.0()			
	RW10	DENNT	030		DF		FB	1.0				
	RW10	DARCY	040		TF		FB	1.0				
	RW15		010		VA		FB		148.6()		AA 01260	
	RW15		020		VM		FB		148.6()			
	RW15	DENNT	030		DF		FB	1.0				
	RW15	DARCY	040		TF		FB	1.0				
	RW20B		010		VA		FB		195.0()		AA 01260	
	RW20B		020		VM		FB		195.0()			
	RW20B	DENNT	030		DF		FB	1.0				
	RW20B	DARCY	040		TF		FB	1.0				
	RW28		010		VA		FB		277.0()		AA 01260	
	RW28		020		VM		FB		277.0()			
	RW28	DENNT	030		DF		FB	1.0				
	RW28	DARCY	040		TF		FB	1.0				
	RW33		010		VA		FB		328.6()		AA 01260	
	RW33		020		VM		FB		328.6()			
	RW33	DENNT	030		DF		FB	1.0				
	RW33	DARCY	040		TF		FB	1.0				
	DONVE	DARCY	010		IF		FB					
	DONVE	DREGS	020		TF		FB	1.0				
	DONVE	DONVE	030		TF		FB	1.0				
	SCOTO	DARCY	010		IF		FB					
	SCOTO	DREGS	020		TF		FB	1.0				
	SCOTO	DUMGE	030		TF		FB	1.0				
	SCOTO	SCOTO	040		TF		FB	1.0				

POINT DATA	WAYPOINT	LAT IN SECS	LONG IN SECS	LAT IN MINS	LONG IN MINS
	DARCY	N411208.00	W0874333.00	N4112.133	W08743.550
	DENNT	N412509.00	W0874329.00	N4125.150	W08743.483
	DONVE	N395911.00	W0873733.00	N3959.183	W08737.550
	DREGS	N401900.00	W0873627.00	N4019.000	W08736.450
	DUMGE	N395911.00	W0872354.00	N3959.183	W08723.900
	SCOTO	N391008.93	W0865116.99	N3910.149	W08651.283
	RW02L	N415338.51	W0881512.77	N4153.642	W08815.213
	RW02R	N415336.07	W0881459.71	N4153.601	W08814.995



## DEPARTURE (DATA RECORD)

DP Name	Number	DP Computer Code	Superseded Number	Dated	Effective Date
DARCY	THREE	DARCY3.DARCY	TWO	03/07/2013	22 AUG 2013

RW10	N415448.52	W0881530.55	N4154.809	W08815.509
RW15	N415509.20	W0881444.64	N4155.153	W08814.744
RW20L	N415437.83	W0881439.08	N4154.631	W08814.651
RW20R	N415451.08	W0881448.52	N4154.851	W08814.809
RW28	N415443.60	W0881428.07	N4154.727	W08814.468
RW33	N415442.45	W0881421.88	N4154.708	W08814.365

## RUNWAY DATA

RWY	THRESHOLD ELEVATION	TCH
RW02L	00751	50
RW02R	00751	50
RW10	00753	50
RW15	00757	42
RW20L	00759	40
RW20R	00756	40
RW28	00756	40
RW33	00758	50

## DEPARTURE (DATA RECORD)

DP Name	Number	DP Computer Code	Superseded Number	Dated	Effective Date
DARCY	THREE	DARCY3.DARCY	TWO	03/07/2013	22 AUG 2013

ARINC PACKET - 424-18 - SID

[illegible][illegible][illegible]

## DEPARTURE (DATA RECORD)

DP Name	Number	DP Computer Code	Superseded Number	Dated	Effective Date
DARCY	THREE	DARCY3.DARCY	TWO	03/07/2013	22 AUG 2013

SUSAP	KARRK5DDARC36DONVE	030DONVEK5EA0EE	010TF
SUSAP	KARRK5DDARC36SCOT0	010DARC36K5EA0E	IF
SUSAP	KARRK5DDARC36SCOT0	020DREGSK5EA0E	010TF
SUSAP	KARRK5DDARC36SCOT0	030DUMGEK5EA0E	010TF
SUSAP	KARRK5DDARC36SCOT0	040SCOTOK5EA0EE	010TF

1.8000

[illegible]

SUSAP	KARRK5GRW09	0065010901	N41461255W088290731+0000	+0182500707000045100IIARR1
SUSAP	KARRK5GRW15	00550331477	N41464810W088291016-0200	+0184000712000045100R
SUSAP	KARRK5GRW18	0031981810	N41463569W088281782-0000	+0180400700000030075S
SUSAP	KARRK5GRW27	0065012702	N41461351W088274152+0000	+0182600707000045100R
SUSAP	KARRK5GRW33	0055033277	N41460266W088283030+0200	+0179900699000048100IIROF1
SUSAP	KARRK5GRW36	0031980010	N41460410W088281778-0000	+0180500700000034075V

## DEPARTURE (DATA RECORD)

DP Name	Number	DP Computer Code	Superseded Number	Dated	Effective Date
DARCY	THREE	DARCY3.DARCY	TWO	03/07/2013	22 AUG 2013

## ARINC SUMMARY - 424-18 - SID

ROUTES	TRANSITION	FIX	SEQ	USE	PATH	TURN	FO/FB	RNP	MAG(TRUE)	DISTANCE	ALTITUDE	SPEED
			RW09		010	VA	FB		090.1()		AA 01220	
			RW09		020	VM	FB		090.1()			
		DENNT	RW09		030	DF	FB	1.0				
		DARCY	RW09		040	TF	FB	1.0				
			RW15		010	VA	FB		147.7()		AA 01220	
			RW15		020	VM	FB		147.7()			
		DENNT	RW15		030	DF	FB	1.0				
		DARCY	RW15		040	TF	FB	1.0				
			RW18		010	VA	FB		181.0()		AA 01220	
			RW18		020	VM	FB		181.0()			
		DENNT	RW18		030	DF	FB	1.0				
		DARCY	RW18		040	TF	FB	1.0				
			RW27		010	VA	FB		270.2()		AA 01220	
			RW27		020	VM	FB		270.2()			
		DENNT	RW27		030	DF	FB	1.0				
		DARCY	RW27		040	TF	FB	1.0				
			RW33		010	VA	FB		327.7()		AA 01220	
			RW33		020	VM	FB		327.7()			
		DENNT	RW33		030	DF	FB	1.0				
		DARCY	RW33		040	TF	FB	1.0				
			RW36		010	VA	FB		001.0()		AA 01220	
			RW36		020	VM	FB		001.0()			
		DENNT	RW36		030	DF	FB	1.0				
		DARCY	RW36		040	TF	FB	1.0				
			DONVE		010	IF	FB					
		DREGS	DONVE		020	TF	FB	1.0				
		DONVE	DONVE		030	TF	FB	1.0				
		DARCY	SCOTO		010	IF	FB					
		DREGS	SCOTO		020	TF	FB	1.0				
		DUMGE	SCOTO		030	TF	FB	1.0				
		SCOTO	SCOTO		040	TF	FB	1.0				

## POINT DATA

WAYPOINT	LAT IN SECS	LONG IN SECS	LAT IN MINS	LONG IN MINS
DARCY	N411208.00	W0874333.00	N4112.133	W08743.550
DENNT	N412509.00	W0874329.00	N4125.150	W08743.483
DONVE	N395911.00	W0873733.00	N3959.183	W08737.550
DREGS	N401900.00	W0873627.00	N4019.000	W08736.450
DUMGE	N395911.00	W0872354.00	N3959.183	W08723.900
SCOTO	N391008.93	W0865116.99	N3910.149	W08651.283
RW09	N414612.55	W0882907.31	N4146.209	W08829.122
RW15	N414648.10	W0882910.16	N4146.802	W08829.169

**DEPARTURE (DATA RECORD)**

DP Name	Number	DP Computer Code	Superseded Number	Dated	Effective Date
DARCY	THREE	DARCY3.DARCY	TWO	03/07/2013	22 AUG 2013

RW18	N414635.69	W0882817.82	N4146.595	W08828.297
RW27	N414613.51	W0882741.52	N4146.225	W08827.692
RW33	N414602.66	W0882830.30	N4146.044	W08828.505
RW36	N414604.10	W0882817.78	N4146.068	W08828.296

## RUNWAY DATA

RWY	THRESHOLD ELEVATION	TCH
RW09	00707	45
RW15	00712	45
RW18	00700	30
RW27	00707	45
RW33	00699	48
RW36	00700	34

**U.S. DEPARTMENT of TRANSPORTATION -- FEDERAL AVIATION ADMINISTRATION**  
**GRAPHIC DEPARTURE PROCEDURE (DP)**

Bearings, headings, courses, tracks, and radials are magnetic. Elevation and altitudes are in feet MSL. Altitudes are minimum altitudes unless otherwise indicated. Ceilings are in feet above airport elevation.  
 Distances are in nautical miles. Visibilities are in statute miles or feet RVR unless otherwise indicated. Graphic depictions attached.

DP Name	Number	DP Computer Code	Superseded Number	Dated	Effective Date
CARYN	THREE	CARYN3.CARYN	TWO	03/07/2013	22 AUG 2013

**TYPE:** RNAV SID

**DP ROUTE DESCRIPTION:**

**CHICAGO/AURORA MUNI (KARR)**

TAKEOFF RWY 9: CLIMB HEADING 090.14 TO 1220, THEN AS ASSIGNED BY ATC, EXPECT VECTORS TO CMSKY. THENCE...  
 TAKEOFF RWY 15: CLIMB HEADING 147.71 TO 1220, THEN AS ASSIGNED BY ATC, EXPECT VECTORS TO CMSKY. THENCE...  
 TAKEOFF RWY 18: CLIMB HEADING 180.95 TO 1220, THEN AS ASSIGNED BY ATC, EXPECT VECTORS TO CMSKY. THENCE...  
 TAKEOFF RWY 27: CLIMB HEADING 270.15 TO 1220, THEN AS ASSIGNED BY ATC, EXPECT VECTORS TO CMSKY. THENCE...  
 TAKEOFF RWY 33: CLIMB HEADING 327.71 TO 1220, THEN AS ASSIGNED BY ATC, EXPECT VECTORS TO CMSKY. THENCE...  
 TAKEOFF RWY 36: CLIMB HEADING 000.95 TO 1220, THEN AS ASSIGNED BY ATC, EXPECT VECTORS TO CMSKY. THENCE...

**CHICAGO/WEST CHICAGO/DUPAGE (KDPX)**

TAKEOFF RWY 2L, 2R: CLIMB HEADING 015.01 TO 1260, THEN AS ASSIGNED BY ATC, EXPECT VECTORS TO CMSKY. THENCE...  
 TAKEOFF RWY 10: CLIMB HEADING 097.01 TO 1260, THEN AS ASSIGNED BY ATC, EXPECT VECTORS TO CMSKY. THENCE...  
 TAKEOFF RWY 15: CLIMB HEADING 148.56 TO 1260, THEN AS ASSIGNED BY ATC, EXPECT VECTORS TO CMSKY. THENCE...  
 TAKEOFF RWY 20L: CLIMB HEADING 195.01 TO 1260, THEN AS ASSIGNED BY ATC, EXPECT VECTORS TO CMSKY. THENCE...  
 TAKEOFF RWY 20R: CLIMB HEADING 195.02 TO 1260, THEN AS ASSIGNED BY ATC, EXPECT VECTORS TO CMSKY. THENCE...  
 TAKEOFF RWY 28: CLIMB HEADING 277.02 TO 1260, THEN AS ASSIGNED BY ATC, EXPECT VECTORS TO CMSKY. THENCE...  
 TAKEOFF RWY 33: CLIMB HEADING 328.57 TO 1260, THEN AS ASSIGNED BY ATC, EXPECT VECTORS TO CMSKY. THENCE...

**GARY/CHICAGO INTL (KGYI)**

TAKEOFF RWY 2: CLIMB HEADING 022.19 TO 1100, THEN AS ASSIGNED BY ATC, EXPECT VECTORS TO CMSKY. THENCE...  
 TAKEOFF RWY 12: CLIMB HEADING 125.15 TO 1100, THEN AS ASSIGNED BY ATC, EXPECT VECTORS TO CMSKY. THENCE...  
 TAKEOFF RWY 20: CLIMB HEADING 202.20 TO 1100, THEN AS ASSIGNED BY ATC, EXPECT VECTORS TO CMSKY. THENCE...  
 TAKEOFF RWY 30: CLIMB HEADING 305.16 TO 1100, THEN AS ASSIGNED BY ATC, EXPECT VECTORS TO CMSKY. THENCE...

**CHICAGO/LEWIS UNIVERSITY (KLOT)**

TAKEOFF RWY 2: CLIMB HEADING 014.73 TO 1180, THEN AS ASSIGNED BY ATC, EXPECT VECTORS TO CMSKY. THENCE...  
 TAKEOFF RWY 9: CLIMB HEADING 088.73 TO 1180, THEN AS ASSIGNED BY ATC, EXPECT VECTORS TO CMSKY. THENCE...  
 TAKEOFF RWY 20: CLIMB HEADING 194.73 TO 1180, THEN AS ASSIGNED BY ATC, EXPECT VECTORS TO CMSKY. THENCE...  
 TAKEOFF RWY 27: CLIMB HEADING 268.74 TO 1180, THEN AS ASSIGNED BY ATC, EXPECT VECTORS TO CMSKY. THENCE...

...ON TRACK 185.04 TO CARYN, THEN ON (TRANSITION). MAINTAIN 3000. EXPECT FILED ALTITUDE 10 MINUTES AFTER DEPARTURE.

**TRANSITION ROUTES (GRAPHIC DEPICTION ONLY):**

Transition Name	Transition Computer Codes	From FIX/NAVAID	To FIX/NAVAID	Course	Distance	MEA	MOCA	Crossing Altitudes/Fixes
CYBIL	CARYN3.CYBIL	CARYN	CYBIL	TRACK 179.68	55.96	5000	2200	



**U.S. DEPARTMENT of TRANSPORTATION – FEDERAL AVIATION ADMINISTRATION**  
**GRAPHIC DEPARTURE PROCEDURE (DP)**

Bearings, headings, courses, tracks, and radials are magnetic. Elevation and altitudes are in feet MSL. Altitudes are minimum altitudes unless otherwise indicated. Ceilings are in feet above airport elevation.  
Distances are in nautical miles. Visibilities are in statute miles or feet RVR unless otherwise indicated. Graphic depictions attached.

DP Name	Number	DP Computer Code	Superseded Number	Dated	Effective Date
CARYN	THREE	CARYN3.CARYN	TWO	03/07/2013	22 AUG 2013

**PROCEDURAL DATA NOTES/TAKEOFF MINIMUMS:**

NOTE: RADAR REQUIRED.  
NOTE: DME/DME/IRU OR GPS REQUIRED.  
NOTE: RNAV 1.  
NOTE: TURBOJET DEPARTURES MAINTAIN 250 KIAS UNTIL ADVISED BY ATC.

**CHICAGO/AURORA MUNI (KARR)**  
RWY 9, 15, 18, 27, 33, 36 STANDARD.

**CHICAGO/WEST CHICAGO/DUPAGE (KDPA)**  
RWY 2L, 2R, 10, 15, 20L, 20R, 28, 33 STANDARD.

**GARY/CHICAGO INTL (KGYI)**  
RWY 12, 30 STANDARD. RWY 2, STANDARD WITH MINIMUM CLIMB OF 321 FT PER NM TO 900. RWY 20, STANDARD WITH MINIMUM CLIMB OF 256 FT PER NM TO 1300.

**CHICAGO/LEWIS UNIVERSITY (KLOT)**  
RWY 2, STANDARD WITH MINIMUM CLIMB OF 420 FT PER NM TO 2700.  
RWY 9, STANDARD WITH MINIMUM ATC CLIMB OF 260 FT PER NM TO 2700.  
RWY 20, 27 STANDARD.

**TAKEOFF OBSTACLES NOTES:**

**CHICAGO/AURORA MUNI (KARR):**  
NOTE: RWY 9, VEHICLE ON ROAD 794 FT FROM DER, RIGHT AND LEFT OF CENTERLINE, 15 FT AGL/734 FT MSL. MULTIPLE TREES BEGINNING 4126 FT FROM DER, ON CENTERLINE, UP TO 100 FT AGL/819 FT MSL.  
NOTE: RWY 15, MULTIPLE TREES, POWER POLES, AND ROAD BEGINNING 900 FT FROM DER, 47 FT RIGHT OF CENTERLINE, UP TO 100 FT AGL/809 FT MSL. POWER POLE 1313 FT FROM DER, 47 FT LEFT OF CENTERLINE, 34 FT AGL/733 FT MSL.  
NOTE: RWY 18, MULTIPLE POWER POLES BEGINNING 1218 FT FROM DER, 190 FT RIGHT OF CENTERLINE, UP TO 35 FT AGL/734 FT MSL. MULTIPLE TREES BEGINNING 3646 FT FROM DER, ON CENTERLINE, UP TO 100 FT AGL/809 FT MSL.  
NOTE: RWY 27, VEHICLE ON ROAD 1020 FT FROM DER, RIGHT AND LEFT OF CENTERLINE, 15 FT AGL/734 FT MSL.  
NOTE: RWY 33, MULTIPLE TREES AND ROAD BEGINNING 788 FT FROM DER, 238 FT RIGHT OF CENTERLINE, UP TO 79 FT AGL/788 FT MSL. ROAD AND POWER POLE BEGINNING 577 FT FROM DER, 137 FT LEFT OF CENTERLINE, UP TO 38 FT AGL/747 FT MSL.  
NOTE: RWY 36, TREE, POLE, AND FENCE BEGINNING 31 FT FROM DER, 169 FT LEFT OF CENTERLINE, UP TO 35 FT AGL/734 FT MSL. VEHICLE ON ROAD BEGINNING 1099 FT FROM DER, RIGHT AND LEFT OF CENTERLINE, 15 FT AGL/734 FT MSL.

**CHICAGO/WEST CHICAGO/DUPAGE (KDPA):**  
NOTE: RWY 2L, AIRFIELD LIGHT 9 FT FROM DER, 61 FT LEFT OF CENTERLINE, 1 FT AGL/756 FT MSL. POLES BEGINNING 1075 FT FROM DER, 622 FT LEFT OF CENTERLINE, UP TO 44 FT AGL/799 FT MSL. TREES BEGINNING 1252 FT FROM DER, 368 FT LEFT OF CENTERLINE, UP TO 104 FT AGL/856 FT MSL. FENCE 1672 FT FROM DER, 807 FT LEFT OF CENTERLINE, 42 FT AGL/800 FT MSL.  
NOTE: RWY 10, REIL LIGHTS BEGINNING 39 FT FROM DER, 77 FT LEFT AND RIGHT OF CENTERLINE, UP TO 3 FT AGL/757 FT MSL. BUILDINGS BEGINNING 630 FT FROM DER, 134 FT LEFT AND RIGHT OF CENTERLINE, UP TO 45 FT AGL/801 FT MSL. ANTENNAE BEGINNING 699 FT FROM DER, 632 FT LEFT OF CENTERLINE, UP TO 36 FT AGL/792 FT MSL. MULTIPLE TREES BEGINNING 845 FT FROM DER, 1 FT LEFT AND RIGHT OF CENTERLINE, UP TO 93 FT AGL/849 FT MSL. STACK 1638 FT FROM DER, 185 FT LEFT OF CENTERLINE, 54 FT AGL/810 FT MSL.

**U.S. DEPARTMENT of TRANSPORTATION – FEDERAL AVIATION ADMINISTRATION**  
**GRAPHIC DEPARTURE PROCEDURE (DP)**

Bearings, headings, courses, tracks, and radials are magnetic. Elevation and altitudes are in feet MSL. Altitudes are minimum altitudes unless otherwise indicated. Ceilings are in feet above airport elevation. Distances are in nautical miles. Visibilities are in statute miles or feet RVR unless otherwise indicated. Graphic depictions attached.

DP Name	Number	DP Computer Code	Superseded Number	Dated	Effective Date
CARYN	THREE	CARYN3.CARYN	TWO	03/07/2013	22 AUG 2013

**NOTE: RWY 15, FENCE 62 FT FROM DER, 385 FT LEFT OF CENTERLINE, 5 FT AGL/763 FT MSL. MULTIPLE TREES BEGINNING 3 FT FROM DER, 9 FT LEFT AND RIGHT OF CENTERLINE, UP TO 95 FT AGL/850 FT MSL. VEHICLE ON ROAD BEGINNING 89 FT FROM DER, 9 FT LEFT AND RIGHT OF CENTERLINE, UP TO 15 FT AGL/773 FT MSL. BUILDINGS BEGINNING 417 FT FROM DER, 481 FT RIGHT OF CENTERLINE, UP TO 37 FT AGL/795 FT MSL. POLES BEGINNING 804 FT FROM DER, 235 FT RIGHT OF CENTERLINE, UP TO 36 FT AGL/794 FT MSL. ANTENNA 1.1 NM FROM DER, 1676 FT LEFT OF CENTERLINE, 169 FT AGL/927 FT MSL.**

**NOTE: RWY 20L, FENCE 209 FT FROM DER, 547 FT LEFT OF CENTERLINE, 7 FT AGL/757 FT MSL. MULTIPLE TREES BEGINNING 407 FT FROM DER, 392 FT LEFT OF CENTERLINE, UP TO 111 FT AGL/847 FT MSL. SIGN 22 FT FROM DER, 351 FT RIGHT OF CENTERLINE, 2 FT AGL/752 FT MSL.**

**NOTE: RWY 20R, TREE 645 FT FROM DER, 619 FT RIGHT OF CENTERLINE, 17 FT AGL/768 FT MSL.**

**NOTE: RWY 28, MULTIPLE TREES BEGINNING 1228 FT FROM DER, 683 FT LEFT AND RIGHT OF CENTERLINE, UP TO 84 FT AGL/837 FT MSL. SIGN 39 FT FROM DER, 455 FT RIGHT OF CENTERLINE, 3 FT AGL/756 FT MSL. BUILDING 974 FT FROM DER, 681 FT RIGHT OF CENTERLINE, 28 FT AGL/781 FT MSL.**

**NOTE: RWY 33, REIL LIGHTS BEGINNING 51 FT FROM DER, 95 FT LEFT AND RIGHT OF CENTERLINE, UP TO 2 FT AGL/760 FT MSL. MULTIPLE POLES BEGINNING 407 FT FROM DER, 154 FT LEFT AND RIGHT OF CENTERLINE, UP TO 61 FT AGL/817 FT MSL. OL ON POLES BEGINNING 532 FT FROM DER, 120 FT LEFT AND RIGHT OF CENTERLINE, UP TO 39 FT AGL/796 FT MSL. VEHICLE ON ROAD BEGINNING 460 FT FROM DER, 439 FT RIGHT OF CENTERLINE, UP TO 15 FT AGL/772 FT MSL. MULTIPLE TREES BEGINNING 335 FT FROM DER, 11 FT LEFT AND RIGHT OF CENTERLINE, UP TO 110 FT AGL/859 FT MSL. FENCE 346 FT FROM DER, 575 FT LEFT OF CENTERLINE, 48 FT AGL/800 FT MSL. BUILDINGS BEGINNING 195 FT FROM DER, 425 FT RIGHT OF CENTERLINE, UP TO 21 FT AGL/778 FT MSL.**

**GARY/CHICAGO INTL (KGYG):**

**NOTE: RWY 2, STACKS, TOWERS, BUILDINGS, TREES, POLE, AND VEHICLE ON ROAD BEGINNING 554 FT FROM DER, 82 FT RIGHT OF CENTERLINE, UP TO 201 FT AGL/791 FT MSL. STACKS, TOWERS, AND TREE BEGINNING 1489 FT FROM DER, 236 FT LEFT OF CENTERLINE, UP TO 231 FT AGL/823 FT MSL. VEHICLE ON ROAD 571 FT FROM DER, ON CENTERLINE, 15 FT AGL/605 FT MSL.**

**NOTE: RWY 12, TREES AND TOWER BEGINNING 1617 FT FROM DER, 451 FT LEFT OF CENTERLINE, UP TO 105 FT AGL/699 FT MSL. TREES AND POLES BEGINNING 1681 FT FROM DER, 238 FT RIGHT OF CENTERLINE, UP TO 75 FT AGL/674 FT MSL.**

**NOTE: RWY 20, TREES, STACKS, LIGHTS, AND POLE BEGINNING 203 FT FROM DER, 108 FT RIGHT OF CENTERLINE, UP TO 152 FT AGL/747 FT MSL. TREES AND LIGHTS BEGINNING 883 FT FROM DER, 26 FT LEFT OF CENTERLINE, UP TO 69 FT AGL/658 FT MSL. VEHICLE ON ROAD, 1048 FT FROM DER, ON CENTERLINE, 17 FT AGL/631 FT MSL.**

**NOTE: RWY 30, LIGHT ON LOCALIZER ANTENNA 130 FT FROM DER, ON CENTERLINE, 10 FT AGL/596 FT MSL. TREES, TOWERS, ANTENNAS, AND RAILROAD BEGINNING 139 FT FROM DER, 5 FT RIGHT OF CENTERLINE, UP TO 106 FT AGL/695 FT MSL. RAILROAD, TOWER, AND VEHICLE ON ROAD BEGINNING 194 FT FROM DER, 7 FT LEFT OF CENTERLINE, UP TO 81 FT AGL/670 FT MSL.**

**CHICAGO/LEWIS UNIVERSITY (KLOT):**

**NOTE: RWY 2, MULTIPLE TOWERS, TREE, AND STACK BEGINNING 1196 FT FROM DER, 49 FT LEFT OF CENTERLINE, UP TO 213 FT AGL/876 FT MSL.**

**NOTE: RWY 9, MULTIPLE TREES AND BUILDING BEGINNING 243 FT FROM DER, 358 FT LEFT OF CENTERLINE, UP TO 64 FT AGL/735 FT MSL. MULTIPLE LIGHT POLES, TREES, AND SIGN BEGINNING 112 FT FROM DER, 174 FT RIGHT OF CENTERLINE, UP TO 77 FT AGL/721 FT MSL.**

**NOTE: RWY 27, MULTIPLE TREES BEGINNING 1143 FT FROM DER, 634 FT RIGHT OF CENTERLINE, UP TO 70 FT AGL/723 FT MSL.**

**CONTROLLING OBSTACLES:**

**GARY/CHICAGO INTL (KGYG)**

**RWY 2: 790 FT MSL SMOKE STACK 413757.65N/0872408.23W, 823 FT MSL STACK 413821.50N/0872425.23W.**

**RWY 20: 747 FT MSL STACK 413605.00N/0872548.00W, 1096 FT MSL TOWER 413357.00N/0872505.00W.**

**CHICAGO/LEWIS UNIVERSITY (KLOT)**

**RWY 2: 1087 FT MSL STACK 413759.00N/0880344.00W, 875 FT MSL TOWER 413755.00N/0880541.00W, 876 FT MSL TOWER 413755.97N/0880541.31W.**

**LOST COMMUNICATIONS PROCEDURES:**

## U.S. DEPARTMENT of TRANSPORTATION – FEDERAL AVIATION ADMINISTRATION

**GRAPHIC DEPARTURE PROCEDURE (DP)**

Bearings, headings, courses, tracks, and radials are magnetic. Elevation and altitudes are in feet MSL. Altitudes are minimum altitudes unless otherwise indicated. Ceilings are in feet above airport elevation. Distances are in nautical miles. Visibilities are in statute miles or feet RVR unless otherwise indicated. Graphic depictions attached.

DP Name	Number	DP Computer Code	Superseded Number	Dated	Effective Date
CARYN	THREE	CARYN3.CARYN	TWO	03/07/2013	22 AUG 2013

**ADDITIONAL FLIGHT DATA:**

REFERENCE MAG VAR: KDPX 1W/EPOCH YR: 1985.  
DME/DME ASSESSMENT: SAT (RNP 2.0)  
CHART: MEA/MOCA FROM CMSKY TO CARYN, 5000/2300.

**PILOT NAVIGATION AREA:**

7NM ARC CENTERED ON CMSKY (IF), CW  
FROM: POINT A (BEARING 140 DEGREES TO CMSKY)  
TO: POINT B (BEARING 230 DEGREES TO CMSKY)  
MINIMUM ALTITUDE – 5000

**AIRPORTS SERVED:**

AURORA MUNI  
DUPAGE  
GARY/CHICAGO INTL  
LEWIS UNIVERSITY

CHICAGO/AURORA, IL  
CHICAGO/WEST CHICAGO, IL  
GARY, IN  
CHICAGO/ROMEOVILLE, IL

**COMMUNICATIONS:**

ATIS, GND CON, TWR, DEP CON

**FIXES AND/OR NAVAIDS:**

**DEPARTURE (DATA RECORD)**

DP Name	Number	DP Computer Code	Superseded Number	Dated	Effective Date
CARYN	THREE	CARYN3:CARYN	TWO	03/07/2013	22 AUG 2013

FIX/NAVAID	LAT/LONG	C	FO/FB	LEG TYPE	TC	DIST (NM)	ALTITUDE	SPEED	REMARKS
CHICAGO/AURORA MUNI (KARR)									
RW09 (AER)	414612.55N/0882907.31W	N	-	-	-	-			
1220 MSL	-	-	-	VA	089.14	-			
-	-	-	-	VM	089.14	-			
CMSKY	412447.00N/0875238.00W	Y	FB	DF	-	-			
CARYN	411459.00N/0875333.00W	Y	FB	TF	184.04	9.82			
RW15 (AER)	414648.10N/0882910.16W	N	-	-	-	-			
1220 MSL	-	-	-	VA	146.71	9.82			
-	-	-	-	VM	146.71	-			
CMSKY	412447.00N/0875238.00W	Y	FB	DF	-	-			
CARYN	411459.00N/0875333.00W	Y	FB	TF	184.04	9.82			
RW18 (AER)	414635.69N/0882817.82W	N	-	-	-	-			
1220 MSL	-	-	-	VA	179.95	-			
-	-	-	-	VM	179.95	-			
CMSKY	412447.00N/0875238.00W	Y	FB	DF	-	-			
CARYN	411459.00N/0875333.00W	Y	FB	TF	184.04	9.82			
RW27 (AER)	414613.51N/0882741.52W	N	-	-	-	-			
1220 MSL	-	-	-	VA	269.15	-			
-	-	-	-	VM	269.15	-			
CMSKY	412447.00N/0875238.00W	Y	FB	DF	-	-			
CARYN	411459.00N/0875333.00W	Y	FB	TF	184.04	9.82			
RW33 (AER)	414602.66N/0882830.30W	N	-	-	-	-			
1220 MSL	-	-	-	VA	326.71	-			
-	-	-	-	VM	326.71	-			
CMSKY	412447.00N/0875238.00W	Y	FB	DF	-	-			
CARYN	411459.00N/0875333.00W	Y	FB	TF	184.04	9.82			

**DEPARTURE (DATA RECORD)**

DP Name		Number		DP Computer Code		Superseded Number		Dated	Effective Date
CARYN		THREE		CARYN3.CARYN		TWO		03/07/2013	22 AUG 2013
FIX/NAVAID	LAT/LONG	C	FO/FB	LEG TYPE	TC	DIST (NM)	ALTITUDE	SPEED	REMARKS
RW36 (AER)	414604.10N/0882817.78W	N	-	-	-	-			
1220 MSL	-	-	-	VA	359.95	-			
-	-	-	-	VM	359.95	-			
CMSKY	412447.00N/0875238.00W	Y	FB	DF	-	-			
CARYN	411459.00N/0875333.00W	Y	FB	TF	184.04	9.82			
CHICAGO/WEST CHICAGO/DUPAGE (KDPA)									
RW02L (AER)	415338.51N/0881512.77W	N	-	-	-	-			
1260 MSL	-	-	-	VA	014.01	-			
-	-	-	-	VM	014.01	-			
CMSKY	412447.00N/0875238.00W	Y	FB	DF	-	-			
CARYN	411459.00N/0875333.00W	Y	FB	TF	184.04	9.82			
RW02R (AER)	415336.07N/0881459.71W	N	-	-	-	-			
1260 MSL	-	-	-	VA	014.01	-			
-	-	-	-	VM	014.01	-			
CMSKY	412447.00N/0875238.00W	Y	FB	DF	-	-			
CARYN	411459.00N/0875333.00W	Y	FB	TF	184.04	9.82			
RW10 (AER)	415448.52N/0881530.55W	N	-	-	-	-			
1260 MSL	-	-	-	VA	096.01	-			
-	-	-	-	VM	096.01	-			
CMSKY	412447.00N/0875238.00W	Y	FB	DF	-	-			
CARYN	411459.00N/0875333.00W	Y	FB	TF	184.04	9.82			
RW15 (AER)	415509.20N/0881444.64W	N	-	-	-	-			
1260 MSL	-	-	-	VA	147.56	-			
-	-	-	-	VM	147.56	-			
CMSKY	412447.00N/0875238.00W	Y	FB	DF	-	-			
CARYN	411459.00N/0875333.00W	Y	FB	TF	184.04	9.82			

## DEPARTURE (DATA RECORD)

DP Name	Number	DP Computer Code	Superseded Number	Dated	Effective Date				
CARYN	THREE	CARYN3.CARYN	TWO	03/07/2013	22 AUG 2013				
FIX/NAVAID	LAT/LONG	C	FO/FB	LEG TYPE	TC	DIST (NM)	ALTITUDE	SPEED	REMARKS
RW20L (AER)	415437.83N/0881439.08W	N	-	-	-	-			
1260 MSL	-	-	-	VA	194.01	-			
-	-	-	-	VM	194.01	-			
CMSKY	412447.00N/0875238.00W	Y	FB	DF	-	-			
CARYN	411459.00N/0875333.00W	Y	FB	TF	184.04	9.82			
RW20R (AER)	415451.08N/0881448.52W	N	-	-	-	-			
1260 MSL	-	-	-	VA	194.02	-			
-	-	-	-	VM	194.02	-			
CMSKY	412447.00N/0875238.00W	Y	FB	DF	-	-			
CARYN	411459.00N/0875333.00W	Y	FB	TF	184.04	9.82			
RW28 (AER)	415443.60N/0881428.07W	N	-	-	-	-			
1260 MSL	-	-	-	VA	276.02	-			
-	-	-	-	VM	276.02	-			
CMSKY	412447.00N/0875238.00W	Y	FB	DF	-	-			
CARYN	411459.00N/0875333.00W	Y	FB	TF	184.04	9.82			
RW33 (AER)*	415442.45N/0881421.88W*	N	-	-	-	-			*DISPL THLD (190 FT)
1260 MSL	-	-	-	VA	327.57	-			
-	-	-	-	VM	327.57	-			
CMSKY	412447.00N/0875238.00W	Y	FB	DF	-	-			
CARYN	411459.00N/0875333.00W	Y	FB	TF	184.04	9.82			
<u>GARY/CHICAGO INTL (KGYG)</u>									
RW02 (AER)	413644.22N/0872506.30W	N	-	-	-	-			
1100 MSL	-	-	-	VA	021.19	-			CG 321 FT PER NM TO 900
-	-	-	-	VM	021.19	-			
CMSKY	412447.00N/0875238.00W	Y	FB	DF	-	-			
CARYN	411459.00N/0875333.00W	Y	FB	TF	184.04	9.82			



## DEPARTURE (DATA RECORD)

DP Name		Number	DP Computer Code				Superseded Number		Dated	Effective Date	
CARYN		THREE	CARYN3.CARYN				TWO		03/07/2013	22 AUG 2013	
FIX/NAVAID	LAT/LONG	C	FO/FB	LEG TYPE	TC	DIST (NM)	ALTITUDE	SPEED	REMARKS		
RW12 (AER)*	413712.88N/0872510.36W*	N	-	-	-	-			*DISPL THLD (713 FT)		
1100 MSL	-	-	-	VA	124.15	-					
-	-	-	-	VM	124.15	-					
CMSKY	412447.00N/0875238.00W	Y	FB	DF	-	-					
CARYN	411459.00N/0875333.00W	Y	FB	TF	184.04	9.82					
RW20 (AER)	413717.41N/0872449.15W	N	-	-	-	-					
1100 MSL	-	-	-	VA	201.20	-			CG 256 FT PER NM 1300		
-	-	-	-	VM	201.20	-					
CMSKY	412447.00N/0875238.00W	Y	FB	DF	-	-					
CARYN	411459.00N/0875333.00W	Y	FB	TF	184.04	9.82					
RW30 (AER)	413638.00N/0872401.85W	N	-	-	-	-					
1100 MSL	-	-	-	VA	304.16	-					
-	-	-	-	VM	304.16	-					
CMSKY	412447.00N/0875238.00W	Y	FB	DF	-	-					
CARYN	411459.00N/0875333.00W	Y	FB	TF	184.04	9.82					
<u>CHICAGO/LEWIS UNIVERSITY (KLOT)</u>											
RW02 (AER)	413557.23N/0880603.23W	N	-	-	-	-					
1180 MSL	-	-	-	VA	013.73	-			CG 420 FT PER NM TO 2700		
-	-	-	-	VM	013.73	-					
CMSKY	412447.00N/0875238.00W	Y	FB	DF	-	-					
CARYN	411459.00N/0875333.00W	Y	FB	TF	184.04	9.82					
RW09 (AER)	413628.93N/0880616.00W	N	-	-	-	-					
1180 MSL	-	-	-	VA	087.73	-			CG (ATC) 260 FT PER NM TO 2700		
-	-	-	-	VM	087.73	-					
CMSKY	412447.00N/0875238.00W	Y	FB	DF	-	-					
CARYN	411459.00N/0875333.00W	Y	FB	TF	184.04	9.82					

**DEPARTURE (DATA RECORD)**

DP Name	Number	DP Computer Code		Superseded Number		Dated	Effective Date
CARYN	THREE	CARYN3.CARYN		TWO		03/07/2013	22 AUG 2013

FIX/NAVAID	LAT/LONG	C	FO/FB	LEG TYPE	TC	DIST (NM)	ALTITUDE	SPEED	REMARKS
RW20 (AER)	413659.61N/0880542.92W	N	-	-	-	-			
1180 MSL	-	-	-	VA	193.73	-			
-	-	-	-	VM	193.73	-			
CMSKY	412447.00N/0875238.00W	Y	FB	DF	-	-			
CARYN	411459.00N/0875333.00W	Y	FB	TF	184.04	9.82			
RW27 (AER)*	413631.08N/0880503.66W*	N	-	-	-	-			*DISPL THLD (196 FT)
1180 MSL	-	-	-	VA	267.74	-			
-	-	-	-	VM	267.74	-			
CMSKY	412447.00N/0875238.00W	Y	FB	DF	-	-			
CARYN	411459.00N/0875333.00W	Y	FB	TF	184.04	9.82			
CARYN	411459.00N/0875333.00W	Y	-	IF	-	-			CARYN3.CYBIL
CYBIL	401900.00N/0875152.00W	Y	FB	TF	178.68	55.96			

## DEPARTURE (DATA RECORD)

DP Name	Number	DP Computer Code	Superseded Number	Dated	Effective Date
CARYN	THREE	CARYN3.CARYN	TWO	03/07/2013	22 AUG 2013

ARINC PACKET - 424-18 - SID

[illegible][illegible][illegible][illegible]

## DEPARTURE (DATA RECORD)

DP Name	Number	DP Computer Code	Superseded Number	Dated	Effective Date
CARYN	THREE	CARYN3.CARYN	TWO	03/07/2013	22 AUG 2013

SUSAP KARRK5GRW09	0065010901	N41461255W088290731+0000	+0182500707000045100IIARR1
SUSAP KARRK5GRW15	0055031477	N41464810W088291016-0200	+0184000712000045100R
SUSAP KARRK5GRW18	0031981810	N41463569W088281782+0000	+0180400700000030075V
SUSAP KARRK5GRW27	0065012702	N41461351W088274152+0000	+0182600707000045100R
SUSAP KARRK5GRW33	0055033277	N41460266W088283030+0200	+0179900699000048100IIROF1
SUSAP KARRK5GRW36	0031980010	N41460410W088281778+0000	+0180500700000034075V

## DEPARTURE (DATA RECORD)

DP Name	Number	DP Computer Code	Superseded Number	Dated	Effective Date
CARYN	THREE	CARYN3.CARYN	TWO	03/07/2013	22 AUG 2013

## ARINC SUMMARY - 424-18 - SID

ROUTES	TRANSITION	FIX	SEQ	USE	PATH	TURN	FO/FB	RNP	MAG(TRUE)	DISTANCE	ALTITUDE	SPEED
	RW09		010		VA		FB		090.1()		AA 01220	
	RW09		020		VM		FB		090.1()			
	RW09	CMSKY	030		DF		FB	1.0				
	RW09	CARYN	040		TF		FB	1.0				
	RW15		010		VA		FB		147.7()		AA 01220	
	RW15		020		VM		FB		147.7()			
	RW15	CMSKY	030		DF		FB	1.0				
	RW15	CARYN	040		TF		FB	1.0				
	RW18		010		VA		FB		181.0()		AA 01220	
	RW18		020		VM		FB		181.0()			
	RW18	CMSKY	030		DF		FB	1.0				
	RW18	CARYN	040		TF		FB	1.0				
	RW27		010		VA		FB		270.2()		AA 01220	
	RW27		020		VM		FB		270.2()			
	RW27	CMSKY	030		DF		FB	1.0				
	RW27	CARYN	040		TF		FB	1.0				
	RW33		010		VA		FB		327.7()		AA 01220	
	RW33		020		VM		FB		327.7()			
	RW33	CMSKY	030		DF		FB	1.0				
	RW33	CARYN	040		TF		FB	1.0				
	RW36		010		VA		FB		001.0()		AA 01220	
	RW36		020		VM		FB		001.0()			
	RW36	CMSKY	030		DF		FB	1.0				
	RW36	CARYN	040		TF		FB	1.0				
	CYBIL	CARYN	010		IF		FB					
	CYBIL	CYBIL	020		TF		FB	1.0				

POINT DATA	WAYPOINT	LAT IN SECS	LONG IN SECS	LAT IN MINS	LONG IN MINS
	CARYN	N411459.00	W0875333.00	N4114.983	W08753.550
	CMSKY	N412447.00	W0875238.00	N4124.783	W08752.633
	CYBIL	N401900.00	W0875152.00	N4019.000	W08751.867
	RW09	N414612.55	W0882907.31	N4146.209	W08829.122
	RW15	N414648.10	W0882910.16	N4146.802	W08829.169
	RW18	N414635.69	W0882817.82	N4146.595	W08828.297
	RW27	N414613.51	W0882741.52	N4146.225	W08827.692
	RW33	N414602.66	W0882830.30	N4146.044	W08828.505
	RW36	N414604.10	W0882817.78	N4146.068	W08828.296

RUNWAY DATA	THRESHOLD
RWY	ELEVATION TCH

**DEPARTURE (DATA RECORD)**

DP Name	Number	DP Computer Code	Superseded Number	Dated	Effective Date
CARYN	THREE	CARYN3.CARYN	TWO	03/07/2013	22 AUG 2013

RW09	00707	45
RW15	00712	45
RW18	00700	30
RW27	00707	45
RW33	00699	48
RW36	00700	34

## DEPARTURE (DATA RECORD)

DP Name	Number	DP Computer Code	Superseded Number	Dated	Effective Date
CARYN	THREE	CARYN3.CARYN	TWO	03/07/2013	22 AUG 2013

ARINC PACKET - 424-18 - SID

[illegible][illegible][illegible][illegible]

## DEPARTURE (DATA RECORD)

DP Name	Number	DP Computer Code	Superseded Number	Dated	Effective Date
CARYN	THREE	CARYN3.CARYN	TWO	03/07/2013	22 AUG 2013

SUSAP KDKAK5GRW02L	0075710150	N41533851W088151277+0100	+0195700751000050100IIGVK1
SUSAP KDKAK5GRW02R	0064430150	N41533607W088145971+0100	+0195700751000050100R
SUSAP KDKAK5GRW10	0047500970	N41544852W088153055+0100	+0196400753000050075IIDPA1
SUSAP KDKAK5GRW15	0033991486	N41550920W088144464+0000	+0197500757000042100V
SUSAP KDKAK5GRW20L	0064431950	N41543783W088143908-0100	+0196500759000040100R
SUSAP KDKAK5GRW20R	0075711950	N41545108W088144852-0100	+0197100756000040100R
SUSAP KDKAK5GRW28	0047502770	N41544360W088142807-0100	+0197200756000040075V
SUSAP KDKAK5GRW33	0033993286	N41544245W088142188+0000	+0197800758019050100D



## DEPARTURE (DATA RECORD)

DP Name	Number	DP Computer Code	Superseded Number	Dated	Effective Date
CARYN	THREE	CARYN3.CARYN	TWO	03/07/2013	22 AUG 2013

## ARINC SUMMARY -- 424-18 - SID

ROUTES	TRANSITION	FIX	SEQ	USE	PATH	TURN	FO/FB	RNP	MAG (TRUE)	DISTANCE	ALTITUDE	SPEED
	RW02B		010		VA		FB		015.0()		AA 01260	
	RW02B		020		VM		FB		015.0()			
	RW02B	CMSKY	030		DF		FB	1.0				
	RW02B	CARYN	040		TF		FB	1.0				
	RW10		010		VA		FB		097.0()		AA 01260	
	RW10		020		VM		FB		097.0()			
	RW10	CMSKY	030		DF		FB	1.0				
	RW10	CARYN	040		TF		FB	1.0				
	RW15		010		VA		FB		148.6()		AA 01260	
	RW15		020		VM		FB		148.6()			
	RW15	CMSKY	030		DF		FB	1.0				
	RW15	CARYN	040		TF		FB	1.0				
	RW20B		010		VA		FB		195.0()		AA 01260	
	RW20B		020		VM		FB		195.0()			
	RW20B	CMSKY	030		DF		FB	1.0				
	RW20B	CARYN	040		TF		FB	1.0				
	RW28		010		VA		FB		277.0()		AA 01260	
	RW28		020		VM		FB		277.0()			
	RW28	CMSKY	030		DF		FB	1.0				
	RW28	CARYN	040		TF		FB	1.0				
	RW33		010		VA		FB		328.6()		AA 01260	
	RW33		020		VM		FB		328.6()			
	RW33	CMSKY	030		DF		FB	1.0				
	RW33	CARYN	040		TF		FB	1.0				
	CYBIL	CARYN	010		IF		FB					
	CYBIL	CYBIL	020		TF		FB	1.0				

POINT DATA	WAYPOINT	LAT IN SECS	LONG IN SECS	LAT IN MINS	LONG IN MINS
	CARYN	N411459.00	W0875333.00	N4114.983	W08753.550
	CMSKY	N412447.00	W0875238.00	N4124.783	W08752.633
	CYBIL	N401900.00	W0875152.00	N4019.000	W08751.867
	RW02L	N415338.51	W0881512.77	N4153.642	W08815.213
	RW02R	N415336.07	W0881459.71	N4153.601	W08814.995
	RW10	N415448.52	W0881530.55	N4154.809	W08815.509
	RW15	N415509.20	W0881444.64	N4155.153	W08814.744
	RW20L	N415437.83	W0881439.08	N4154.631	W08814.651
	RW20R	N415451.08	W0881448.52	N4154.851	W08814.809
	RW28	N415443.60	W0881428.07	N4154.727	W08814.468
	RW33	N415442.45	W0881421.88	N4154.708	W08814.365

RUNWAY DATA                      THRESHOLD

**DEPARTURE (DATA RECORD)**

DP Name	Number	DP Computer Code	Superseded Number	Dated	Effective Date
CARYN	THREE	CARYN3.CARYN	TWO	03/07/2013	22 AUG 2013

RWY	ELEVATION	TCH
RW02L	00751	50
RW02R	00751	50
RW10	00753	50
RW15	00757	42
RW20L	00759	40
RW20R	00756	40
RW28	00756	40
RW33	00758	50

## DEPARTURE (DATA RECORD)

DP Name	Number	DP Computer Code	Superseded Number	Dated	Effective Date
CARYN	THREE	CARYN3.CARYN	TWO	03/07/2013	22 AUG 2013

ARINC PACKET - 424-18 - SID

[illegible][illegible][illegible][illegible]

## DEPARTURE (DATA RECORD)

DP Name	Number	DP Computer Code	Superseded Number	Dated	Effective Date
CARYN	THREE	CARYN3.CARYN	TWO	03/07/2013	22 AUG 2013

## ARINC SUMMARY - 424-18 - SID

ROUTES	TRANSITION	FIX	SEQ	USE	PATH	TURN	FO/FB	RNP	MAG(TRUE)	DISTANCE	ALTITUDE	SPEED
	RW02		010		VA		FB		022.2()		AA 01100	
	RW02		020		VM		FB		022.2()			
	RW02	CMSKY	030		DF		FB	1.0				
	RW02	CARYN	040		TF		FB	1.0				
	RW12		010		VA		FB		125.2()		AA 01100	
	RW12		020		VM		FB		125.2()			
	RW12	CMSKY	030		DF		FB	1.0				
	RW12	CARYN	040		TF		FB	1.0				
	RW20		010		VA		FB		202.2()		AA 01100	
	RW20		020		VM		FB		202.2()			
	RW20	CMSKY	030		DF		FB	1.0				
	RW20	CARYN	040		TF		FB	1.0				
	RW30		010		VA		FB		305.2()		AA 01100	
	RW30		020		VM		FB		305.2()			
	RW30	CMSKY	030		DF		FB	1.0				
	RW30	CARYN	040		TF		FB	1.0				
	CYBIL	CARYN	010		IF		FB					
	CYBIL	CYBIL	020		TF		FB	1.0				

POINT DATA	WAYPOINT	LAT IN SECS	LONG IN SECS	LAT IN MINS	LONG IN MINS
	CARYN	N411459.00	W0875333.00	N4114.983	W08753.550
	CMSKY	N412447.00	W0875238.00	N4124.783	W08752.633
	CYBIL	N401900.00	W0875152.00	N4019.000	W08751.867
	RW02	N413644.22	W0872506.30	N4136.737	W08725.105
	RW12	N413712.88	W0872510.36	N4137.215	W08725.173
	RW20	N413717.41	W0872449.15	N4137.290	W08724.819
	RW30	N413638.00	W0872401.85	N4136.633	W08724.031

RUNWAY DATA	THRESHOLD	
RWY	ELEVATION	TCH
RW02	00589	35
RW12	00591	50
RW20	00589	50
RW30	00591	53

## DEPARTURE (DATA RECORD)

DP Name	Number	DP Computer Code	Superseded Number	Dated	Effective Date
CARYN	THREE	CARYN3.CARYN	TWO	03/07/2013	22 AUG 2013.

ARINC PACKET - 424-18 - SID

WP	1	2	3	4	5	6	7	8	9	0	1	2	3
	12345678901234567890123456789012345678901234567890123456789012345678901234567890123456789012												
	SUSAEAENRT CARYN K50 W B N41145900W087533300 W0034 NAR CARYN												
	SUSAEAENRT CMSKY K50 W B N41244700W087523800 W0034 NAR CMSKY												
	SUSAEAENRT CYBIL K50 W B N40190000W087515200 W0033 NAR CYBIL												

AIRPORT	1	2	3	4	5	6	7	8	9	0	1	2	3
	12345678901234567890123456789012345678901234567890123456789012345678901234567890123456789012												
	SUSAP KLOTKSALOT 0 065YHN41362920W088054630W002000679 1800018000C MNAR LEWIS UNIVERSITY												

SEGMENT	1	2	3	4	5	6	7	8	9	0	1	2	3
	12345678901234567890123456789012345678901234567890123456789012345678901234567890123456789012												
	SUSAP KLOTK5DCARYN34RW02 010 0 VA 0147 + 01180 18000												
	SUSAP KLOTK5DCARYN34RW02 020 0 VM 0147												
	SUSAP KLOTK5DCARYN34RW02 030CMSKYK5EA0E 010DF												
	SUSAP KLOTK5DCARYN34RW02 040CARYNK5EA0EE 010TF												
	SUSAP KLOTK5DCARYN34RW09 010 0 VA 0887 + 01180 18000												
	SUSAP KLOTK5DCARYN34RW09 020 0 VM 0887												
	SUSAP KLOTK5DCARYN34RW09 030CMSKYK5EA0E 010DF												
	SUSAP KLOTK5DCARYN34RW09 040CARYNK5EA0EE 010TF												
	SUSAP KLOTK5DCARYN34RW20 010 0 VA 1947 + 01180 18000												
	SUSAP KLOTK5DCARYN34RW20 020 0 VM 1947												
	SUSAP KLOTK5DCARYN34RW20 030CMSKYK5EA0E 010DF												
	SUSAP KLOTK5DCARYN34RW20 040CARYNK5EA0EE 010TF												
	SUSAP KLOTK5DCARYN34RW27 010 0 VA 2687 + 01180 18000												
	SUSAP KLOTK5DCARYN34RW27 020 0 VM 2687												
	SUSAP KLOTK5DCARYN34RW27 030CMSKYK5EA0E 010DF												
	SUSAP KLOTK5DCARYN34RW27 040CARYNK5EA0EE 010TF												
	SUSAP KLOTK5DCARYN36CYBIL 010CARYNK5EA0E IF 18000												
	SUSAP KLOTK5DCARYN36CYBIL 020CYBILK5EA0EE 010TF												

RUNWAY	1	2	3	4	5	6	7	8	9	0	1	2	3
	12345678901234567890123456789012345678901234567890123456789012345678901234567890123456789012												
	SUSAP KLOTK5GRW02 0065000157 N41355723W088060323-0200 +0173900679000037100RIJQH0												
	SUSAP KLOTK5GRW09 0056960897 N41362893W088061600-0200 +0171900673000041075RILOTO												
	SUSAP KLOTK5GRW20 0065001957 N41365961W088054292+0200 +0169900666000040100R												
	SUSAP KLOTK5GRW27 0056962697 N41363108W088050366+0200 +0169800666019635075R												

## DEPARTURE (DATA RECORD)

DP Name	Number	DP Computer Code	Superseded Number	Dated	Effective Date
CARYN	THREE	CARYN3.CARYN	TWO	03/07/2013	22 AUG 2013

## ARINC SUMMARY - 424-18 - SID

ROUTES	TRANSITION	FIX	SEQ	USE	PATH	TURN	FO/FB	RNP	MAG(TRUE)	DISTANCE	ALTITUDE	SPEED
	RW02		010		VA		FB		014.7()		AA 01180	
	RW02		020		VM		FB		014.7()			
	RW02	CMSKY	030		DF		FB	1.0				
	RW02	CARYN	040		TF		FB	1.0				
	RW09		010		VA		FB		088.7()		AA 01180	
	RW09		020		VM		FB		088.7()			
	RW09	CMSKY	030		DF		FB	1.0				
	RW09	CARYN	040		TF		FB	1.0				
	RW20		010		VA		FB		194.7()		AA 01180	
	RW20		020		VM		FB		194.7()			
	RW20	CMSKY	030		DF		FB	1.0				
	RW20	CARYN	040		TF		FB	1.0				
	RW27		010		VA		FB		268.7()		AA 01180	
	RW27		020		VM		FB		268.7()			
	RW27	CMSKY	030		DF		FB	1.0				
	RW27	CARYN	040		TF		FB	1.0				
	CYBIL	CARYN	010		IF		FB					
	CYBIL	CYBIL	020		TF		FB	1.0				

POINT DATA	WAYPOINT	LAT IN SECS	LONG IN SECS	LAT IN MINS	LONG IN MINS
	CARYN	N411459.00	W0875333.00	N4114.983	W08753.550
	CMSKY	N412447.00	W0875238.00	N4124.783	W08752.633
	CYBIL	N401900.00	W0875152.00	N4019.000	W08751.867
	RW02	N413557.23	W0880603.23	N4135.954	W08806.054
	RW09	N413628.93	W0880616.00	N4136.482	W08806.267
	RW20	N413659.61	W0880542.92	N4136.994	W08805.715
	RW27	N413631.08	W0880503.66	N4136.518	W08805.061

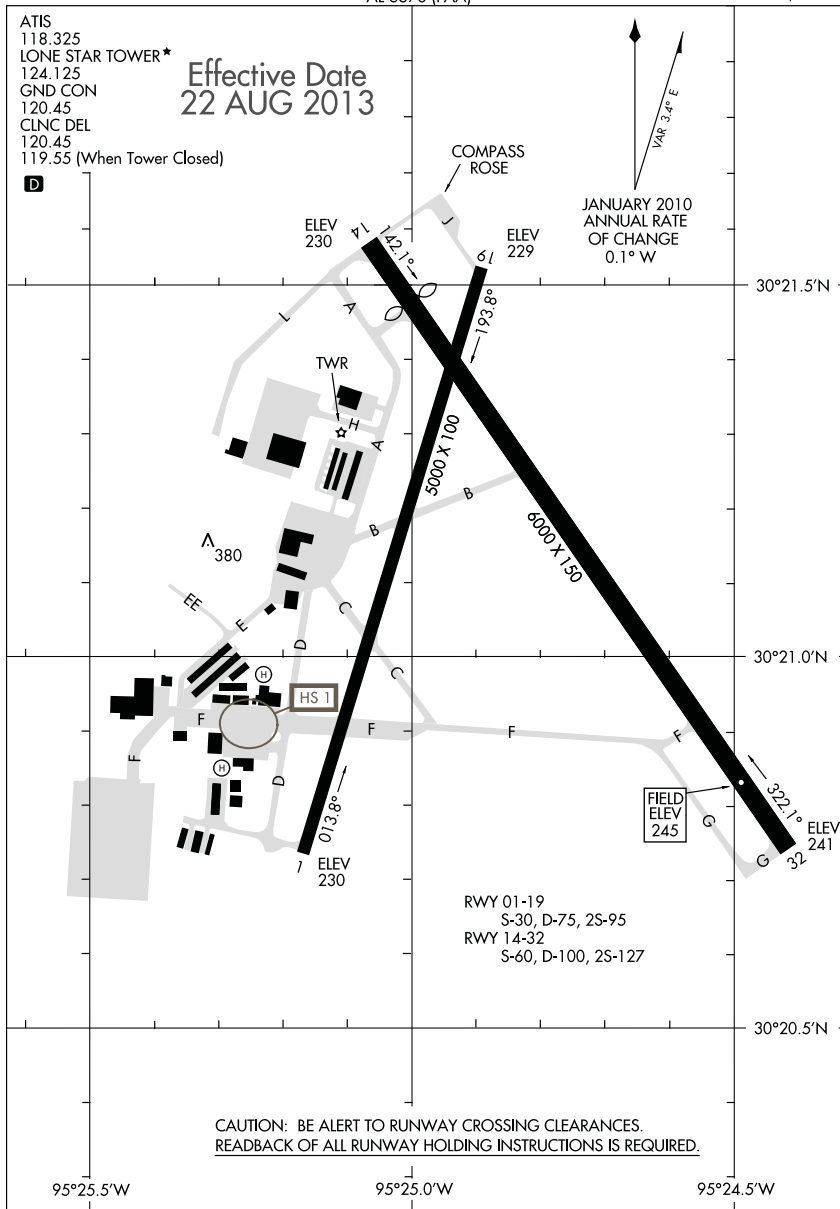
RUNWAY DATA	THRESHOLD	
RWY	ELEVATION	TCH
RW02	00679	37
RW09	00673	41
RW20	00666	40
RW27	00666	35

GRAPHIC REVISION: LONE STAR EXECUTIVE, TX (CXO)

TAXIWAY "P" NOW "G"

ADD "COMPASS ROSE"

13234

**AIRPORT DIAGRAM**HOUSTON/ LONE STAR EXECUTIVE (CXO)  
AL-5573 (FAA) HOUSTON, TEXAS**AIRPORT DIAGRAM**  
13234HOUSTON, TEXAS  
HOUSTON/ LONE STAR EXECUTIVE (CXO)