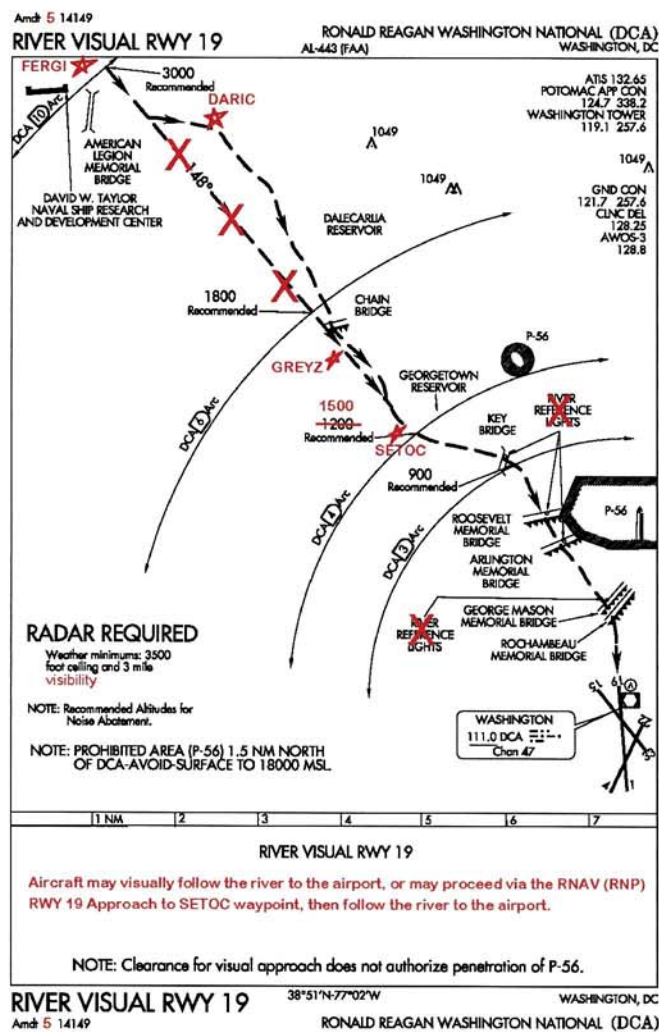
 US Department of Transportation Federal Aviation Administration		Charted Visual Flight Procedures (CVFP)		<i>Bearings, courses, and radials are magnetic. Elevations and altitudes are in feet MSL. Altitudes are recommended unless otherwise indicated. Ceilings are in feet above airport elevation. Distances are in nautical miles except visibilities which are in statute miles.</i>	
CVFP Name River Visual Runway 19		Airport Name Ronald Reagan Washington National		City and State Washington, D.C.	
VISUAL ARRIVAL ROUTE					
FROM (visual landmarks)		TO (visual landmarks)		COURSE (if desired)	
David W. Taylor Naval Ship Research and Development Center Abeam Georgetown Reservoir		Abeam Georgetown Reservoir DCA Runway 19		Aircraft may visually follow the river to the airport, or may proceed via the RNAV (RNP) RWY 19 Approach to SETOC waypoint, then follow the river to the airport. NOTE: Clearance for visual approach does not authorize penetration of P-56.	
				ALTITUDE (if needed) Show if for Class B 3000 - Abeam David W. Taylor Naval Research and Development Center. 1800 - Chain Bridge 1500 - Abeam Georgetown reservoir. 900 - Key Bridge	
Weather Minima: Ceiling <u>3500</u> Visibility <u>3</u> Notes: 1. RADAR REQUIRED. 2. PROHIBITED AREA (P-56) 1.5 NM NORTH OF DCA-AVOID SURFACE TO 18,000 MSL. 3. RECOMMENDED ALTITUDES FOR NOISE ABATEMENT.				Supplementary Navaid/Waypoint Information and Additional Landmarks Chart: P-56, Chain Bridge, Key Bridge, Roosevelt Bridge, Memorial Bridge, Rochambeau Bridge, Dalecarlia Reservoir, American Legion Memorial Bridge, DCA 3 DME Arc, DCA 4 DME Arc, DCA 6 DME Arc, DCA 10 DME Arc, FERGI, DARIC, GREYZ, SETOC.	
Vertical Guidance Navaid and Angle: VASI 3 degrees					
Description of route (will not be printed on chart) Explanation of Changes.					
1. Deleted option to navigate via the ROSSLYN LDA. 2. Deleted option to navigate via the DCA R-328. 3. Deleted River Reference Lights. 4. Added FERGI, DARIC, GREYZ and SETOC waypoints. 5. Changed recommended altitude at Georgetown Reservoir from 1200 to 1500. 6. Under Radar Required, fixed misspelled word 'visibility'.				Reasons 1. ATC Request 2. ATC Request 3. These lights no longer exist. 4. ATC Request 5. ATC Request 6. ATC Request	
Amdt. No. or Orig. 5		Effective Date 10 DEC 2015		Supersedes River Visual RWY 19	
Amdt. No. 4		Dated September 9, 1999			

Graphic Depiction:**Communications to be charted:**

Potomac Approach Control, Tower, GND CTL, CLNC DLVY and ATIS.