

FEDERAL AVIATION ADMINISTRATION  
FLIGHT STANDARDS SERVICE  
STANDARD TERMINAL ARRIVAL (STAR)

Bearings, headings, courses, tracks and radials are magnetic. Elevations and altitudes are in feet, MSL. Altitudes are minimum altitudes unless otherwise indicated.  
Ceilings are in feet above airport elevation. Distances are in nautical miles. Visibilities are in statute miles or feet RVR unless otherwise indicated.

Arrival Name	Number	STAR Computer Code	Superseded Number	Dated	Effective Date
<b>SNFLD (RNAV)</b>	<b>THREE</b>	<b>SNFLD.SNFLD3</b>	<b>TWO</b>	<b>05/19/2022</b>	<b>23 Feb 2023</b>

TRANSITION ROUTES:

Transition Name	Transition Computer Codes	From FIX/NAVAID	To FIX/NAVAID	Course	Distance	MEA	MOCA	MAA	Crossing Altitudes / Fixes
FORYU	FORYU.SNFLD3	FORYU	FORYU						AT/ABOVE 13000
			NICCK	181.58	06.50	11000	1700		AT/ABOVE 12000
			SNFLD	165.07	07.71	8000	1700		AT/ABOVE 10000
LPERD	LPERD.SNFLD3	LPERD	LPERD						BETWEEN FL300 AND FL340
			NOOMN	182.27	53.67	FL180	1700		AT/ABOVE FL230
			FORYU	181.71	24.70	11000	1700		AT/ABOVE 13000
			NICCK	181.58	06.50	11000	1700		AT/ABOVE 12000
			SNFLD	165.07	07.71	8000	1700		AT/ABOVE 10000

ARRIVAL ROUTE DESCRIPTION:

LANDING KMCO RWY 35L/R, 36L/R: FROM SNFLD ON TRACK 167.54/5.90 TO CROSS GTOUT BETWEEN 12000 AND 16000 AND AT 280 KIAS, THEN ON TRACK 180.05/5.54 TO TUGLE, THEN ON TRACK 206.14/11.29 TO CROSS HIGGZ BETWEEN 10000 AND 12000 AND AT 250 KIAS, THEN ON TRACK 198.94/9.87 TO CROSS VOSSS AT OR ABOVE 8000 AND AT 230 KIAS, THEN ON TRACK 186.43/7.02 TO CROSS SUNDE AT OR ABOVE 6000, THEN ON TRACK 186.38/6.95 TO CROSS CUBAL AT 5000 AND AT 210 KIAS, THEN ON TRACK 186.38. EXPECT RADAR VECTORS TO FINAL APPROACH COURSE.

LANDING KISM: FROM SNFLD ON TRACK 167.54/5.91 TO JRRYY, THEN ON TRACK 179.16/4.02 TO CROSS SECOY AT 9000, THEN ON TRACK 179.16. EXPECT RADAR VECTORS TO FINAL APPROACH COURSE.

PBN REQUIREMENT NOTES:

RNAV 1 - DME/DME/IRU OR GPS

EQUIPMENT REQUIREMENT NOTES:

RADAR REQUIRED

PROCEDURAL DATA NOTES:

NOTE: JET AIRCRAFT ONLY

NOTE: LANDING NORTH USE RUNWAY 35R TRANSITION, LANDING SOUTH USE GTOUT (RNAV) STAR. EXPECT RUNWAY ASSIGNMENT FROM ORL APPROACH PRIOR TO SNFLD.

FIXES AND/OR HOLDING PATTERNS:

CHART HOLDING AT GTOUT: HOLD N, LT, 180.05 INBOUND, 10 NM LEGS.

CHART HOLDING AT LPERD: HOLD N, RT, 194.35 INBOUND, 10 NM LEGS.

CHART HOLDING AT NOOMN: HOLD N, LT, 182.27 INBOUND, 10 NM LEGS.

COMMUNICATIONS:

CHART: ORLANDO APP CON

AIRPORTS SERVED:

AIRPORT ID

KMCO

KISM

CITY

ORLANDO

ORLANDO

STATE

FL

FL



FEDERAL AVIATION ADMINISTRATION  
FLIGHT STANDARDS SERVICE  
STANDARD TERMINAL ARRIVAL (STAR)

Bearings, headings, courses, tracks and radials are magnetic. Elevations and altitudes are in feet, MSL. Altitudes are minimum altitudes unless otherwise indicated.  
Ceilings are in feet above airport elevation. Distances are in nautical miles. Visibilities are in statute miles or feet RVR unless otherwise indicated.

Arrival Name	Number	STAR Computer Code	Superseded Number	Dated	Effective Date
SNFLD (RNAV)	THREE	SNFLD.SNFLD3	TWO	05/19/2022	23 Feb 2023

LOST COMMUNICATIONS PREFERENCES:

REMARKS:

ENVIRONMENTAL REVIEW UNDER ORDER 1050.1 (LATEST EDITION) AND THE NOISE SCREENING HAVE BEEN ACCOMPLISHED.

AIR TRAFFIC REMARKS REF DESCENT GRADIENT AT SNFLD/GTOUT: Different airports (transitions) require different restrictions making a window altitude NOT fit the needs of ATC.

ABBREVIATED AMDT.

ADDITIONAL FLIGHT DATA:

DME/DME ASSESSMENT: SAT (RNP 2.0)

MAG VAR: KMCO 06W/2015

CHART AT SECOY TERMINUS: LDG KISM

CHART AT CUBAL TERMINUS: KMCO LDG RWY 35L/R, 36L/R

FLIGHT INSPECTED BY:

ORGANIZATION:

DATE:

PROCESSED IAW TECHNICAL SUPPORT GROUP (AJF-17) MEMO DATED 07/07/2021, SUBJECT: GUIDANCE FOR PROCEDURAL CHANGES REQUIRING FLIGHT INSPECTION VALIDATION.

Flight Inspected Signature:

*Digitally signed by*

**JOHNNIE BAKER**

Nov 14, 2022

DEVELOPED BY:

VICKI TURNER

ESA PBN  
METROPLEX FAA  
LEAD

06/01/2022

Developed By Signature:

*Digitally signed by*

**JOHNNIE BAKER**

Nov 14, 2022

APPROVED BY:

ERIC SUSKI, MANAGER

AJV-A431

Approved By Signature:

*Digitally signed by*

**JOHNNIE BAKER**

Nov 14, 2022

CHANGES:

1. REMOVED: SPEED RESTRICTION 280 KIAS AT NOOMN.

REASONS:

1. SPEED CONSTRAINT NOT NEEDED.

QUALITY  
14  
CHECKED

FEDERAL AVIATION ADMINISTRATION  
FLIGHT STANDARDS SERVICE  
STANDARD TERMINAL ARRIVAL (STAR)

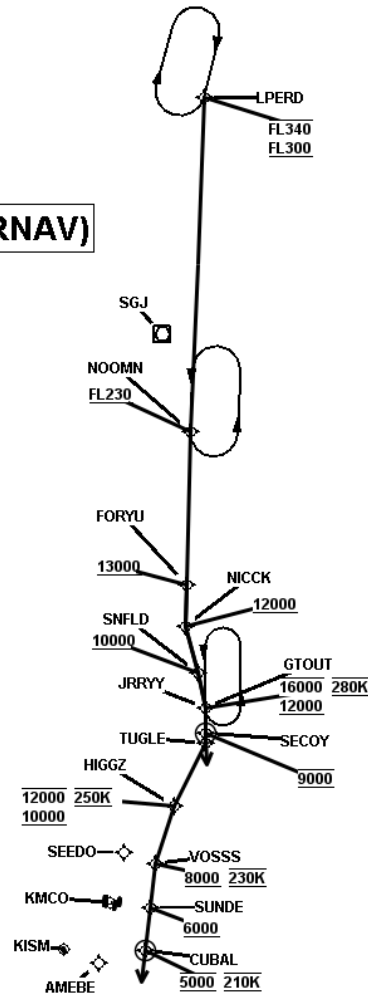
Bearings, headings, courses, tracks and radials are magnetic. Elevations and altitudes are in feet, MSL. Altitudes are minimum altitudes unless otherwise indicated.  
Ceilings are in feet above airport elevation. Distances are in nautical miles. Visibilities are in statute miles or feet RVR unless otherwise indicated.

Arrival Name	Number	STAR Computer Code	Superseded Number	Dated	Effective Date
<b>SNFLD (RNAV)</b>	<b>THREE</b>	<b>SNFLD.SNFLD3</b>	<b>TWO</b>	<b>05/19/2022</b>	<b>23 Feb 2023</b>

**Graphic Depiction 1**

FT		500000		1000000		1500000	
IN	3001233	6002466	9003699	12004932	15006165	18007398	21008631

**SNFLD (RNAV)**



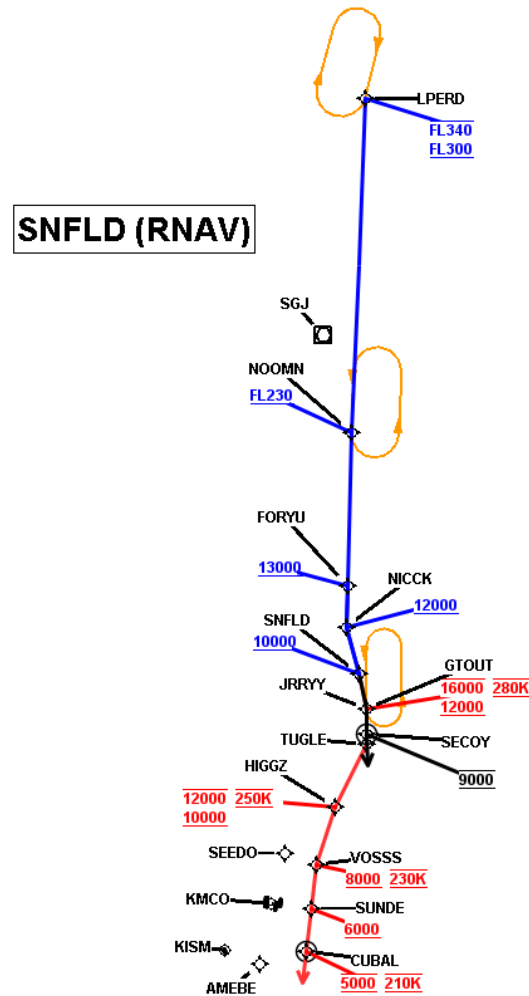
FEDERAL AVIATION ADMINISTRATION  
FLIGHT STANDARDS SERVICE  
STANDARD TERMINAL ARRIVAL (STAR)

Bearings, headings, courses, tracks and radials are magnetic. Elevations and altitudes are in feet, MSL. Altitudes are minimum altitudes unless otherwise indicated.  
Ceilings are in feet above airport elevation. Distances are in nautical miles. Visibilities are in statute miles or feet RVR unless otherwise indicated.

Arrival Name	Number	STAR Computer Code	Superseded Number	Dated	Effective Date
SNFLD (RNAV)	THREE	SNFLD.SNFLD3	TWO	05/19/2022	23 Feb 2023

## Graphic Depiction 2

FT	500000	1000000	1500000	
IN	3001233	6002466	9003699	12004932
				15006165
				18007398
				21008631



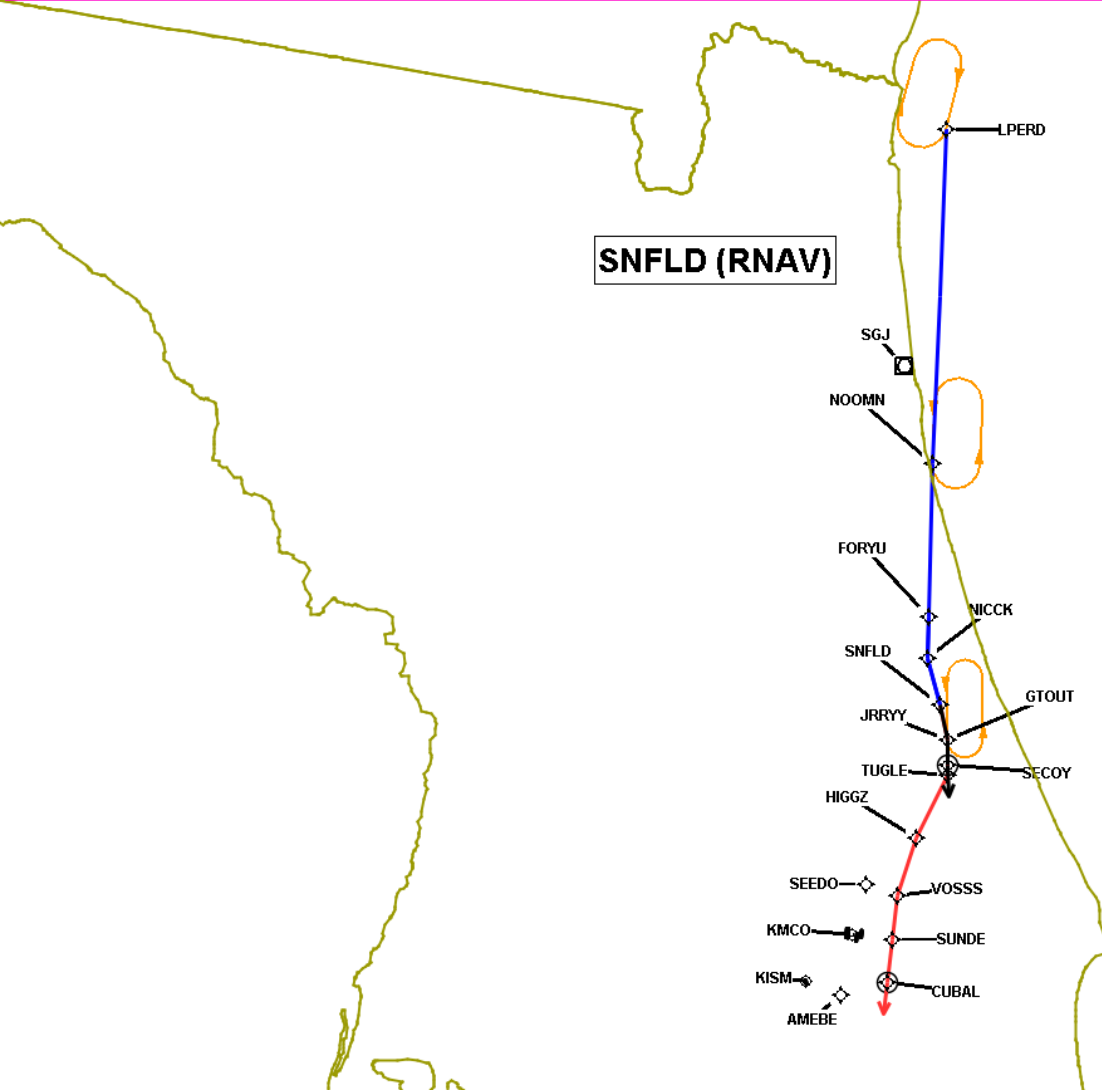
FEDERAL AVIATION ADMINISTRATION  
FLIGHT STANDARDS SERVICE  
STANDARD TERMINAL ARRIVAL (STAR)

Bearings, headings, courses, tracks and radials are magnetic. Elevations and altitudes are in feet, MSL. Altitudes are minimum altitudes unless otherwise indicated.  
Ceilings are in feet above airport elevation. Distances are in nautical miles. Visibilities are in statute miles or feet RVR unless otherwise indicated.

Arrival Name	Number	STAR Computer Code	Superseded Number	Dated	Effective Date
SNFLD (RNAV)	THREE	SNFLD.SNFLD3	TWO	05/19/2022	23 Feb 2023

Graphic Depiction 3

FT		500000		1000000		1500000	
IN	3001233	6002466	9003699	12004932	15006165	18007398	21008631



**FEDERAL AVIATION ADMINISTRATION  
FLIGHT STANDARDS SERVICE  
STAR (DATA RECORD)**

Arrival Name SNFLD (RNAV)	Number THREE		STAR Computer Code SNFLD.SNFLD3			Superseded Number TWO		Dated 05/19/2022	Effective Date 23 Feb 2023
FIX/NAVAID	LAT/LONG	C	FO/FB	LEG TYPE	TC	DIST (NM)	ALTITUDE	SPEED	REMARKS
En Route Transition									
FORYU	291746.48N / 0811044.52W	Y		IF			AT/ABOVE 13000		FORYU.SNFLD3
NICCK	291116.48N / 0811010.16W	Y	FB	TF	175.58	06.50	AT/ABOVE 12000		
SNFLD	290402.99N / 0810701.51W	Y	FB	TF	159.07	07.71	AT/ABOVE 10000		
En Route Transition									
LPERD	303609.18N / 0811652.16W	Y		IF			FL300BFL340		LPERD.SNFLD3
NOOMN	294228.05N / 0811251.29W	Y	FB	TF	176.27	53.67	AT/ABOVE FL230		
FORYU	291746.48N / 0811044.52W	Y	FB	TF	175.71	24.70	AT/ABOVE 13000		
NICCK	291116.48N / 0811010.16W	Y	FB	TF	175.58	06.50	AT/ABOVE 12000		
SNFLD	290402.99N / 0810701.51W	Y	FB	TF	159.07	07.71	AT/ABOVE 10000		
Common Route									
SNFLD	290402.99N / 0810701.51W	Y		IF			AT/ABOVE 10000		SNFLD.SNFLD3
JRRYY	285825.81N / 0810453.54W	Y	FB	TF	161.54	05.91			
SECOY	285425.64N / 0810420.82W	Y	FO	TF	173.16	04.02	AT 9000		
KISM				FM	173.16				
Runway Transition									
SNFLD	290402.99N / 0810701.51W	Y		IF			AT/ABOVE 10000		
GTOUT	285826.33N / 0810453.74W	Y	FB	TF	161.54	05.90	12000B16000	AT 280K	
TUGLE	285254.91N / 0810414.48W	Y	FB	TF	174.05	05.54			
HIGGZ	284216.96N / 0810839.80W	Y	FB	TF	200.14	11.29	10000B12000	AT 250K	
VOSSS	283237.98N / 0811110.45W	Y	FB	TF	192.94	09.87	AT/ABOVE 8000	AT 230K	
SUNDE	282535.58N / 0811114.05W	Y	FB	TF	180.43	07.02	AT/ABOVE 6000		
CUBAL	281837.67N / 0811117.18W	Y	FO	TF	180.38	06.95	AT 5000	AT 210K	
KMCO:RWY 35L,RWY 35R,RWY 36L,RWY 36R				FM	180.38				