

FEDERAL AVIATION ADMINISTRATION
FLIGHT STANDARDS SERVICE
STANDARD TERMINAL ARRIVAL (STAR)

Bearings, headings, courses, tracks and radials are magnetic. Elevations and altitudes are in feet, MSL. Altitudes are minimum altitudes unless otherwise indicated.
Distances are in nautical miles (NM). Graphic depictions attached.

Arrival Name PIKKR (RNAV)	Number SEVEN	STAR Computer Code PIKKR.PIKKR7	Superseded Number SIX	Dated 04/22/2021	Effective Date 2 DEC 2021				
TRANSITION ROUTES:									
Transition Name	Transition Computer Codes	From FIX/NAVAID	To FIX/NAVAID	Course	Distance	MEA	MOCA	MAA	Crossing Altitudes / Fixes
CODGR	CODGR.PIKKR7	CODGR	CODGR						
			BAGGS	126.55	33.06	FL180	1200		
			PIKKR	148.19	14.14	11000	1200		
PLYER	PLYER.PIKKR7	PLYER	PLYER						
			OBESE	184.95	23.04	FL180	1200		
			WHITL	184.95	17.27	FL180	1200		
			RILEE	186.42	08.08	FL180	1200		
			CODGR	181.89	41.84	FL180	1200		
			BAGGS	126.55	33.06	FL180	1200		
			PIKKR	148.19	14.14	11000	1200		
REMIS	REMIS.PIKKR7	REMIS	REMIS						
			CODGR	107.23	104.76	FL180	1200		
			BAGGS	126.55	33.06	FL180	1200		
			PIKKR	148.19	14.14	11000	1200		

ARRIVAL ROUTE DESCRIPTION:

LANDING KAPF/KMKY: FROM PIKKR ON TRACK 139.84/24.83 TO ZEILR, THEN ON TRACK 149.84/39.32 TO ISAJY, THEN ON HEADING 149.84 OR AS ASSIGNED BY ATC. EXPECT RADAR VECTORS TO FINAL APPROACH COURSE.

LANDING KPGD/FA54: FROM PIKKR ON TRACK 118.00/10.15 TO GUSEC, THEN ON HEADING 118.00 OR AS ASSIGNED BY ATC. EXPECT RADAR VECTORS TO FINAL APPROACH COURSE.

PBN REQUIREMENT NOTES

RNAV 1 - DME/DME/IRU OR GPS. REMIS TO CODGR - GPS.

EQUIPMENT REQUIREMENT NOTES

RADAR REQUIRED

PROCEDURAL DATA NOTES:

NOTE: CODGR TRANSITION ATC ASSIGNED ONLY.

NOTE: JET and TURBOPROPS ONLY.

FIXES AND/OR HOLDING PATTERNS:

CHART HOLDING AT CODGR: HOLD W, RT, 108.85 INBOUND, 11 NM LEGS.

CHART HOLDING AT OBESE: HOLD N, LT, 184.95 INBOUND, 11 NM LEGS.

CHART HOLDING AT PIKKR: HOLD NW, RT, 148.19 INBOUND, 8 NM LEGS.



FEDERAL AVIATION ADMINISTRATION
FLIGHT STANDARDS SERVICE
STANDARD TERMINAL ARRIVAL (STAR)

Bearings, headings, courses, tracks and radials are magnetic. Elevations and altitudes are in feet, MSL. Altitudes are minimum altitudes unless otherwise indicated.
Distances are in nautical miles (NM). Graphic depictions attached.

Arrival Name	Number	STAR Computer Code	Superseded Number	Dated	Effective Date
PIKKR (RNAV)	SEVEN	PIKKR.PIKKR7	SIX	04/22/2021	2 DEC 2021

CHART HOLDING AT WHITL: HOLD N, LT, 186.42 INBOUND, 11 NM LEGS.
CHART HOLDING AT ZEILR: HOLD NW, RT, 139.84 INBOUND, 6 NM LEGS.
CHART KOLMN.

COMMUNICATIONS:

FORT MYERS APP CON
PUNTA GORDA AIRPORT ASOS

AIRPORTS SERVED:

MARCO ISLAND EXECUTIVE, MARCO ISLAND, FL (KMKY)
NAPLES MUNI, NAPLES, FL (KAPF)
PUNTA GORDA AIRPORT, PUNTA GORDA, FL (KPGD)
CORAL CREEK, PLACIDA, FL (FA54)

LOST COMMUNICATIONS PROCEDURE:

REMARKS:

THE ENVIRONMENTAL REVIEW UNDER ORDER 1050.1 (LATEST EDITION) AND THE NOISE SCREENING HAVE BEEN ACCOMPLISHED.
MEAs AT or ABOVE FL180 for COMM and DME/DME/IRU SOLUTIONS.
TARGETS (IDENTIFIED) CONTROLLING OBSTS OVER WATER DOCUMENTED AS 295' SHIPS.

ADDITIONAL FLIGHT DATA:

DME/DME ASSESSMENT: SAT (RNP 2.0)
REFERENCE MAGNETIC VARIATION = KAPF 03W/1995
CHART AT ISAJY TERMINUS: LDG KAPF/KMKY
CHART AT GUSEC TERMINUS: LDG KPGD/FA54



FEDERAL AVIATION ADMINISTRATION
FLIGHT STANDARDS SERVICE
STANDARD TERMINAL ARRIVAL (STAR)

Bearings, headings, courses, tracks and radials are magnetic. Elevations and altitudes are in feet, MSL. Altitudes are minimum altitudes unless otherwise indicated.
Distances are in nautical miles (NM). Graphic depictions attached.

Arrival Name	Number	STAR Computer Code	Superseded Number	Dated	Effective Date
PIKKR (RNAV)	SEVEN	PIKKR.PIKKR7	SIX	04/22/2021	2 DEC 2021
<u>FLIGHT INSPECTED BY:</u>				<i>Digitally signed by</i> ALLAN WILL	
MATTHEW R. BUFORD		FIOG	09/21/2021	Oct 20, 2021	
Name		Organization	Date	Signature	
<u>DEVELOPED BY:</u>				<i>Digitally signed by</i> ALLAN WILL	
VICKI TURNER		DESIGN IMPLEMENTATION MANAGER, AJV22	05/20/2021	Oct 20, 2021	
Name		Organization	Date	Signature	
<u>APPROVED BY:</u>				<i>Digitally signed by</i> ALLAN WILL	
MARLON ROBINSON		AJV-A420		Oct 20, 2021	
Name		Organization	Date	Signature	

CHANGES:

1. ADDED CORAL CREEK AIRPORT.
2. ALL MOCAS LOWERED FROM 1300 TO 1200.

REASONS:

1. ATC REQUEST to PROVIDE ADVANCE NAVIGATION PROCEDURE INTO CORAL CREEK AIRPORT.
2. NEW TARGETS EVALUATION.

9/30/2021: THIS IS AN UPDATED COPY OF THE FORM DEVELOPED ON 05/21/2021.

1. ADDED PBN REQUIREMENTS NOTE: REMIS TO CODGR - GPS.

10/20/2021: THIS IS AN UPDATED COPY OF THE FORM DEVELOPED ON 05/21/2021.

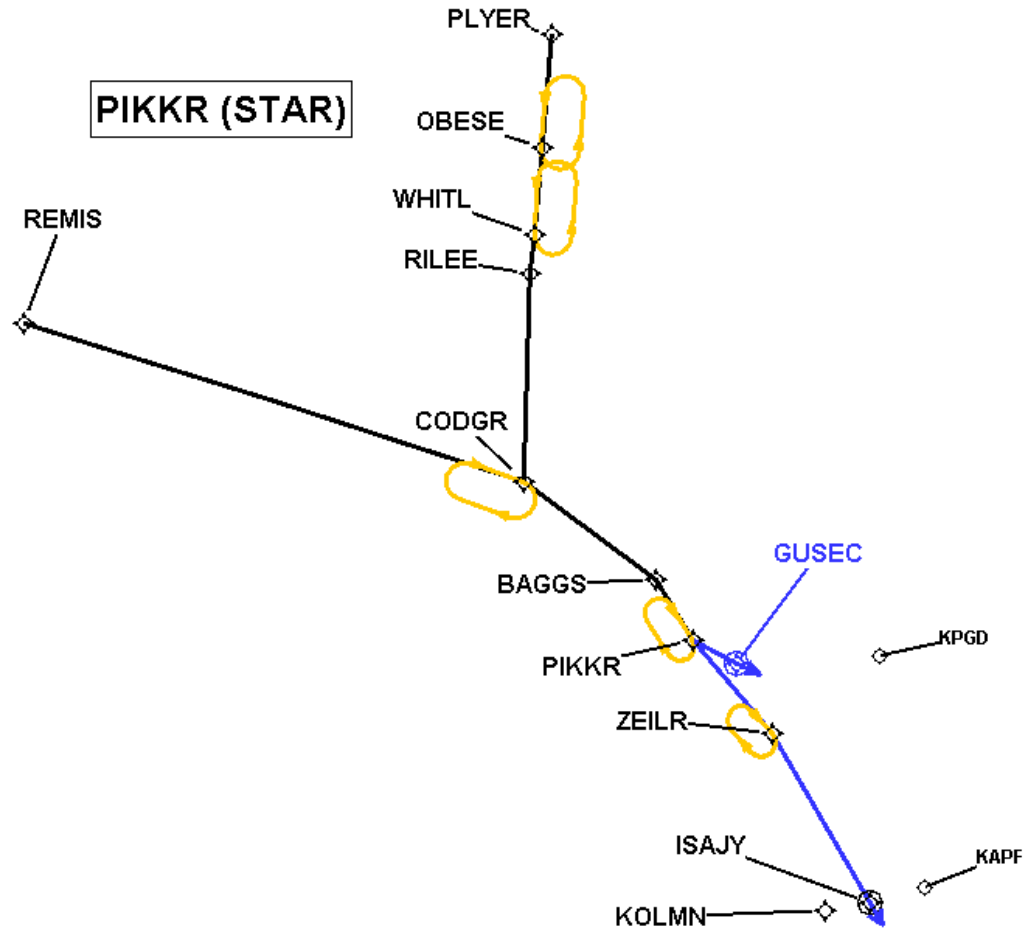
1. REMOVED PROCEDURAL DATA NOTE: GNSS ONLY REMIS TO CODGR.

QUALITY
47
CHECKED

FEDERAL AVIATION ADMINISTRATION
FLIGHT STANDARDS SERVICE
STANDARD TERMINAL ARRIVAL (STAR)

Bearings, headings, courses, tracks and radials are magnetic. Elevations and altitudes are in feet, MSL. Altitudes are minimum altitudes unless otherwise indicated.
Distances are in nautical miles (NM). Graphic depictions attached.

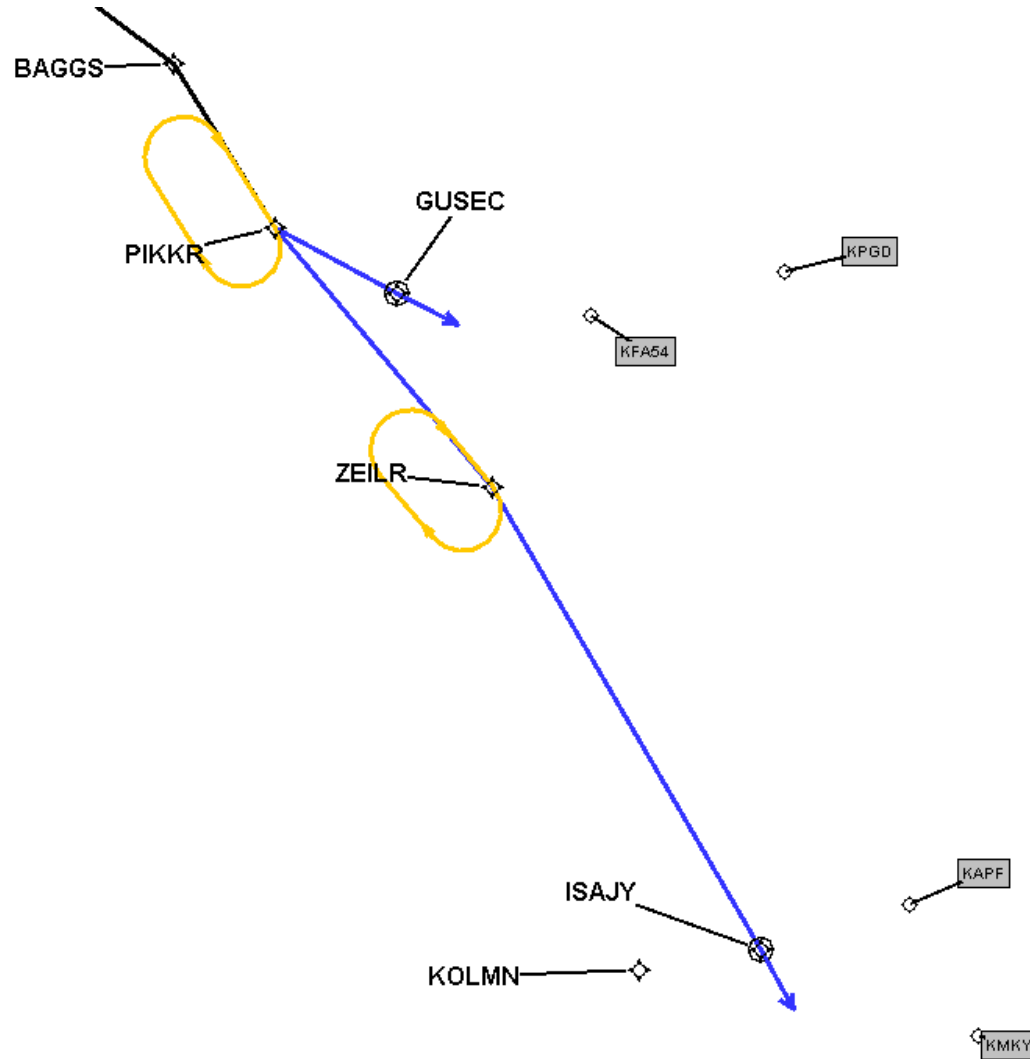
Arrival Name	Number	STAR Computer Code	Superseded Number	Dated	Effective Date
PIKKR (RNAV)	SEVEN	PIKKR.PIKKR7	SIX	04/22/2021	2 DEC 2021
Graphic Depiction 1					



FEDERAL AVIATION ADMINISTRATION
FLIGHT STANDARDS SERVICE
STANDARD TERMINAL ARRIVAL (STAR)

Bearings, headings, courses, tracks and radials are magnetic. Elevations and altitudes are in feet, MSL. Altitudes are minimum altitudes unless otherwise indicated.
Distances are in nautical miles (NM). Graphic depictions attached.

Arrival Name	Number	STAR Computer Code	Superseded Number	Dated	Effective Date
PIKKR (RNAV)	SEVEN	PIKKR.PIKKR7	SIX	04/22/2021	2 DEC 2021
Graphic Depiction 2					



FEDERAL AVIATION ADMINISTRATION
FLIGHT STANDARDS SERVICE
STAR (DATA RECORD)

Arrival Name PIKKR (RNAV)		Number SEVEN		STAR Computer Code PIKKR.PIKKR7		Superseded Number SIX		Dated 04/22/2021	Effective Date 2 DEC 2021
FIX/NAVAID	LAT/LONG	C	FO/FB	LEG TYPE	TC	DIST (NM)	ALTITUDE	SPEED	REMARKS
En Route Transition									
CODGR	272625.84N / 0832120.06W	Y		IF					CODGR .PIKKR7
BAGGS	270803.28N / 0825027.20W	Y	FB	TF	123.55	33.06			
PIKKR	265624.43N / 0824125.28W	Y	FB	TF	145.19	14.14			
En Route Transition									
PLYER	285651.36N / 0832008.59W	Y		IF					PLYER.PIKKR7
OBESE	283346.40N / 0832101.97W	Y	FB	TF	181.95	23.04			
WHITL	281628.00N / 0832142.00W	Y	FB	TF	181.95	17.27			
RILEE	280822.66N / 0832214.72W	Y	FB	TF	183.42	08.08			
CODGR	272625.84N / 0832120.06W	Y	FB	TF	178.89	41.84			
BAGGS	270803.28N / 0825027.20W	Y	FB	TF	123.55	33.06			
PIKKR	265624.43N / 0824125.28W	Y	FB	TF	145.19	14.14			
En Route Transition									
REMIS	275302.59N / 0851528.39W	Y		IF					REMIS.PIKKR7
CODGR	272625.84N / 0832120.06W	Y	FB	TF	104.23	104.76			
BAGGS	270803.28N / 0825027.20W	Y	FB	TF	123.55	33.06			
PIKKR	265624.43N / 0824125.28W	Y	FB	TF	145.19	14.14			
Common Route									
PIKKR	265624.43N / 0824125.28W	Y		IF					PIKKR.PIKKR7
ZEILR	263813.17N / 0822227.71W	Y	FB	TF	136.84	24.83			
ISAJY	260510.34N / 0815834.47W	Y	FO	TF	146.84	39.32			
KAPF,KMKY				VM	146.84				
Common Route									
PIKKR	265624.43N / 0824125.28W	Y		IF					PIKKR.PIKKR7
GUSEC	265205.99N / 0823108.18W	Y	FO	TF	115.00	10.15			
FA54,KPGD				VM	115.00				

QUALITY

16

CHECKED

QUALITY
16
CHECKED