

FEDERAL AVIATION ADMINISTRATION
FLIGHT STANDARDS SERVICE
STANDARD TERMINAL ARRIVAL (STAR)

Bearings, headings, courses, tracks and radials are magnetic. Elevations and altitudes are in feet, MSL. Altitudes are minimum altitudes unless otherwise indicated.
Ceilings are in feet above airport elevation. Distances are in nautical miles. Visibilities are in statute miles or feet RVR unless otherwise indicated.

Arrival Name	Number	STAR Computer Code	Superseded Number	Dated	Effective Date
SMUKE (RNAV)	THREE	RACYR.SMUKE3	TWO	11/10/2016	11 JUL 2024

TRANSITION ROUTES:

Transition Name	Transition Computer Codes	From FIX/NAVAID	To FIX/NAVAID	Course	Distance	MEA	MOCA	MAA	Crossing Altitudes / Fixes
EMBRR	EMBRR.SMUKE3	EMBRR	EMBRR						
			WOOTE	035.20	12.41	10000	2100		
			GAMLE	035.27	08.62	10000	2100		BETWEEN 15000 AND FL190
			RACYR	034.38	10.77	7000	2100		BETWEEN 12000 AND FL190
TERGE	TERGE.SMUKE3	TERGE	TERGE						
			EMBRR	034.63	49.99	13000	2100		
			WOOTE	035.20	12.41	10000	2100		
			GAMLE	035.27	08.62	10000	2100		BETWEEN 15000 AND FL190
			RACYR	034.38	10.77	7000	2100		BETWEEN 12000 AND FL190
WIDAM	WIDAM.SMUKE3	WIDAM	WIDAM						
			PAAAM	085.76	12.43	7000	2200		
			OLIPE	085.98	07.46	7000	2200		BETWEEN FL240 AND FL260
			ATOTE	085.92	40.48	7000	2200		BETWEEN 15000 AND FL190
			RACYR	086.48	14.59	7000	2100		BETWEEN 12000 AND FL190

ARRIVAL ROUTE DESCRIPTION:

FROM RACYR ON TRACK 036.15/10.40 TO SMUKE, THEN ON TRACK 040.41/10.48 TO FIIRE.

LANDING RWY 5L: FROM FIIRE ON TRACK 035.22/4.74 TO CROSS WESLE AT OR ABOVE 6000, THEN ON TRACK 043.22/5.97 TO CROSS WAAYN AT OR ABOVE 5000 AND AT 210 KIAS. EXPECT RNP, GPS, ILS OR LOC RWY 5L OR RADAR VECTORS TO FINAL APPROACH COURSE.

LANDING RWY 5R: FROM FIIRE ON TRACK 035.22/4.74 TO CROSS WESLE AT OR ABOVE 6000, THEN ON TRACK 050.80/6.37 TO CROSS IIUUU AT OR ABOVE 5000 AND AT 210 KIAS. EXPECT RNP, GPS, ILS OR LOC RWY 5R OR RADAR VECTORS TO FINAL APPROACH COURSE.

LANDING RWY 14: FROM FIIRE ON TRACK 042.95/2.20 TO CROSS EDIIE AT OR ABOVE 11000, THEN ON TRACK 042.97/2.19 TO CROSS COCOO AT OR ABOVE 10000, THEN ON TRACK 044.74/11.00 TO CROSS CIRAM AT OR ABOVE 7000 AND AT 230 KIAS, THEN ON TRACK 049.46/5.91 TO CROSS PNFLD AT 6000 AND AT 210 KIAS, THEN ON TRACK 319.61/7.00 TO CROSS WONOK AT 6000 AND AT 210 KIAS, THEN ON TRACK 319.61. EXPECT RADAR VECTORS TO FINAL APPROACH COURSE.

LANDING RWY 23L: FROM FIIRE ON TRACK 060.39/4.50 TO CROSS CHERZ AT OR ABOVE 11000, THEN ON TRACK 060.44/4.28 TO CROSS TTKAY AT OR ABOVE 10000, THEN ON TRACK 055.89/11.47 TO CROSS EDODE AT OR ABOVE 7000 AND AT 230 KIAS, THEN ON TRACK 056.47/6.00 TO CROSS KNIGT AT 6000 AND AT 210 KIAS, THEN ON TRACK 049.60/6.50 TO CROSS RAMEY AT 6000 AND AT 210 KIAS, THEN ON TRACK 049.60. EXPECT RADAR VECTORS TO FINAL APPROACH COURSE.

LANDING RWY 23R: FROM FIIRE ON TRACK 032.51/4.50 TO CROSS WOTSN AT OR ABOVE 11000, THEN ON TRACK 032.54/4.81 TO CROSS DUBBX AT OR ABOVE 10000, THEN ON TRACK 037.00/11.47 TO CROSS BLSTR AT OR ABOVE 7000 AND AT 230 KIAS, THEN ON TRACK 036.31/6.01 TO CROSS PETYN AT 6000 AND AT 210 KIAS, THEN ON TRACK 049.95/6.50 TO CROSS ZOSAR AT 6000 AND AT 210 KIAS, THEN ON TRACK 049.95. EXPECT RADAR VECTORS TO FINAL APPROACH COURSE.

LANDING RWY 32: FROM FIIRE ON TRACK 042.95/2.20 TO CROSS EDIIE AT OR ABOVE 11000, THEN ON TRACK 042.97/2.19 TO CROSS COCOO AT OR ABOVE 10000, THEN ON TRACK 044.74/11.00 TO CROSS CIRAM AT OR ABOVE 7000 AND AT 230 KIAS, THEN ON TRACK 049.46/5.91 TO CROSS PNFLD AT 6000 AND AT 210 KIAS, THEN ON TRACK 139.49/7.00 TO CROSS ZASNI AT 6000 AND AT 210 KIAS, THEN ON TRACK 139.49. EXPECT RADAR VECTORS TO FINAL APPROACH COURSE.

PBN REQUIREMENT NOTES:

RNAV 1 - DME/DME/IRU OR GPS

FEDERAL AVIATION ADMINISTRATION
FLIGHT STANDARDS SERVICE
STANDARD TERMINAL ARRIVAL (STAR)

Bearings, headings, courses, tracks and radials are magnetic. Elevations and altitudes are in feet, MSL. Altitudes are minimum altitudes unless otherwise indicated.
Ceilings are in feet above airport elevation. Distances are in nautical miles. Visibilities are in statute miles or feet RVR unless otherwise indicated.

Arrival Name	Number	STAR Computer Code	Superseded Number	Dated	Effective Date
SMUKE (RNAV)	THREE	RACYR.SMUKE3	TWO	11/10/2016	11 JUL 2024

EQUIPMENT REQUIREMENT NOTES:

RADAR REQUIRED

PROCEDURAL DATA NOTES:

NOTE: EXPECT DESCEND VIA CLEARANCE AND LANDING DIRECTION ASSIGNMENT BY INDIANAPOLIS CENTER. APPROACH WILL ASSIGN LANDING RWY.

NOTE: FOR NON-GPS EQUIPPED AIRCRAFT LANDING RWY 23L; SHB DME MUST BE OPERATIONAL.

NOTE: FOR NON-GPS EQUIPPED AIRCRAFT LANDING RWY 23R; SHB AND VHP DMES MUST BE OPERATIONAL.

NOTE: KIND LANDING SOUTHWEST SELECT RWY 23R TRANSITION. EXPECT RUNWAY ASSIGNMENT FROM INDIANAPOLIS APP CON PRIOR TO SMUKE.

NOTE: KIND LANDING NORTHEAST SELECT RWY 5L TRANSITION. EXPECT RUNWAY ASSIGNMENT FROM INDIANAPOLIS APP CON PRIOR TO SMUKE.

FIXES AND/OR HOLDING PATTERNS:

CHART HOLDING AT RACYR: HOLD SW, LT, 034.38 INBOUND, 10 NM LEGS.

CHART HOLDING AT EMBRR: HOLD SW, LT, 034.63 INBOUND, 10 NM LEGS.

CHART HOLDING AT GAMLE: HOLD SW, LT, 035.27 INBOUND, 10 NM LEGS.

COMMUNICATIONS:

CHART: IND APP CON

AIRPORTS SERVED:

<u>AIRPORT ID</u>	<u>CITY</u>	<u>STATE</u>
KIND	INDIANAPOLIS	IN

LOST COMMUNICATIONS PREFERENCES:**REMARKS:**

CRITICAL DME NOTES ARE THE RESULT OF POST FLIGHT INSPECTION FROM LAST AMDT, NOT DME/DME ASSESSMENT.

ADDITIONAL FLIGHT DATA:

DME/DME ASSESSMENT: SAT (RNP 2.0)

MAG VAR: KIND 05W/2015.

CHART AT RAMEY TERMINUS: KIND LDG RWY 23L

CHART AT ZOSAR TERMINUS: KIND LDG RWY 23R

CHART AT IIUUU TERMINUS: KIND LDG RWY 5R

CHART AT WONOK TERMINUS: KIND LDG RWY 14

CHART AT WAAYN TERMINUS: KIND LDG RWY 5L

CHART AT ZASNI TERMINUS: KIND LDG RWY 32



FEDERAL AVIATION ADMINISTRATION
FLIGHT STANDARDS SERVICE
STANDARD TERMINAL ARRIVAL (STAR)

Bearings, headings, courses, tracks and radials are magnetic. Elevations and altitudes are in feet, MSL. Altitudes are minimum altitudes unless otherwise indicated.
Ceilings are in feet above airport elevation. Distances are in nautical miles. Visibilities are in statute miles or feet RVR unless otherwise indicated.

Arrival Name	Number	STAR Computer Code	Superseded Number	Dated	Effective Date
SMUKE (RNAV)	THREE	RACYR.SMUKE3	TWO	11/10/2016	11 JUL 2024

FLIGHT INSPECTED BY:

JAMES ONIEAL

ORGANIZATION:

FPO

DATE:

03/12/2024

Flight Inspected Signature:

*Digitally signed by***CASIMIR L TABAKA**

Mar 28, 2024

*Digitally signed by***LORRI F DOWNEY**

Jan 24, 2024

DEVELOPED BY:

LORRI DOWNEY

AJV-A432

12/15/2023

Developed By Signature:

APPROVED BY:

CASIMIR TABAKA

AJV-A432

Approved By Signature:

*Digitally signed by***CASIMIR L TABAKA**

Jan 29, 2024

CHANGES:

1. ADDED ALTITUDE AT 6000MSL AND SPEED RESTRICTION 210K AT WONOK.
2. ADDED ALTITUDE AT 6000MSL AND SPEED RESTRICTION 210K AT RAMEY.
3. ADDED ALTITUDE AT 6000MSL AND SPEED RESTRICTION 210K AT ZOSAR.
4. ADDED ALTITUDE AT 6000MSL AND SPEED RESTRICTION 210K AT ZASNI.
5. ADDED BLOCK ALTITUDE BETWEEN 15000 AND FL190 AT ATOTE.
6. CHANGED BLOCK ALTITUDE AT GAMLE FROM BETWEEN 15000 AND FL210 TO 15000 AND FL190.
7. CHANGED MOCA AT GAMLE FROM 2000 TO 2100MSL.
8. ADDED CHART NOTE "KIND LANDING SOUTHWEST SELECT RWY 23R TRANSITION. EXPECT RUNWAY ASSIGNMENT FROM INDIANAPOLIS APP CON PRIOR TO SMUKE."
9. ADDED CHART NOTE "KIND LANDING NORTHEAST SELECT RWY 5L TRANSITION. EXPECT RUNWAY ASSIGNMENT FROM INDIANAPOLIS APP CON PRIOR TO SMUKE."
10. REMOVED NOTE: DME/DME/IRU OR GPS REQUIRED FROM PROCEDURAL DATA NOTES.
11. REMOVED RNAV 1 FROM PROCEDURAL DATA NOTES.
12. ADDED PBN REQUIREMENTS NOTE: RNAV 1-DME/DME/IRU OR GPS.
13. REMOVED NOTE: RADAR REQUIRED FROM PROCEDURAL DATA NOTES.
14. ADDED EQUIPMENT REQUIREMENT NOTE: RADAR REQUIRED.
15. REMOVED AIRPORT NAME FROM AIRPORTS SERVED.
16. REMOVED MEA/MOCA VALUES FROM ARRIVAL DESCRIPTION.
17. REMOVED RECOMMENDED NAVAID FROM 17.2.
18. ADDED TERMINUS DATA TO ADDITIONAL FLIGHT DATA.
19. LOST COMMUNICATION PREFERENCES: REMOVED CHART LOST COMMUNICATION: IN THE EVENT OF LOST COMMUNICATION PRIOR TO RUNWAY ASSIGNMENT, EXECUTE ILS OR LOC RWY 23R APPROACH.

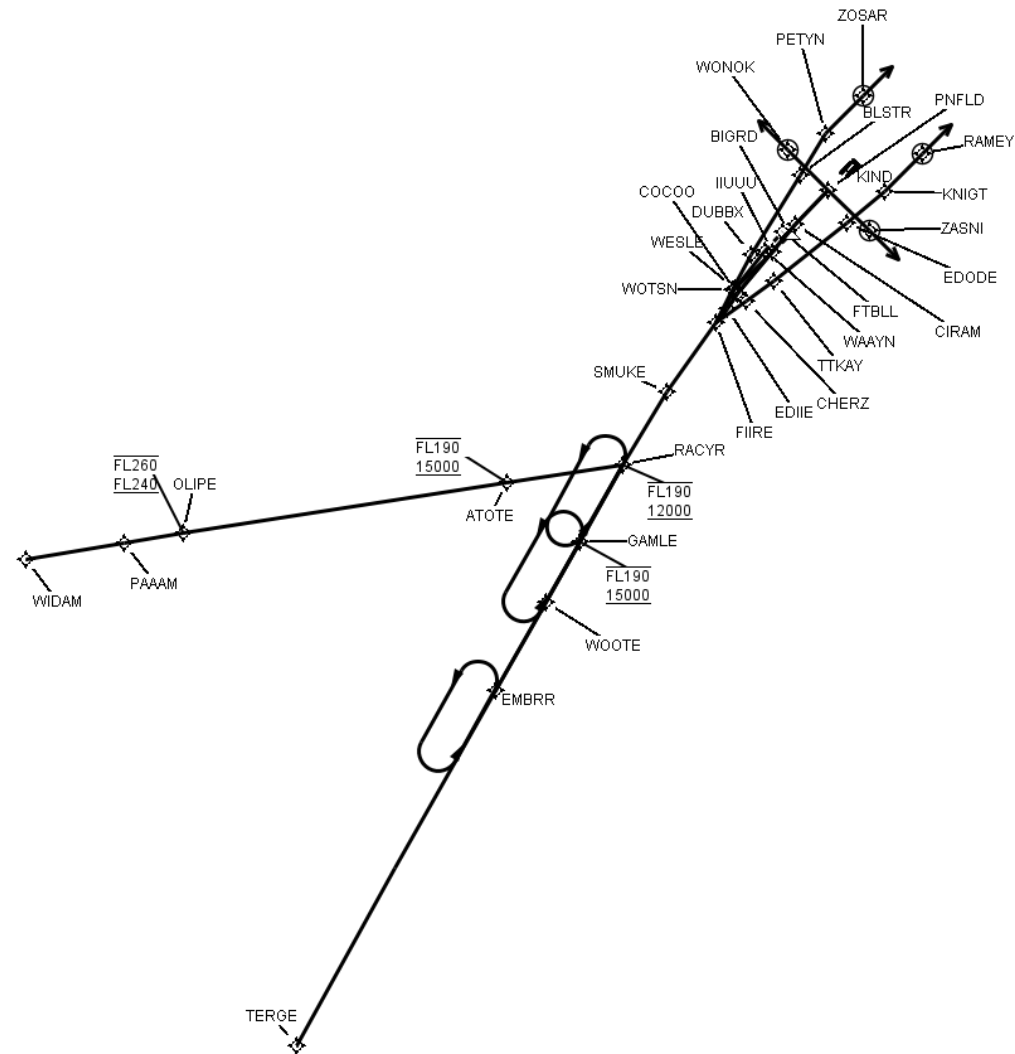
REASONS:

- 1-6. OPERATIONAL REQUEST PER FPT/ATC.
7. REQUIRED TO MEET CRITERIA IN THE FAAO 8260.3E.
- 8-9. ATC REQUEST TO INCORPORATE PENDING CHANGE TO FAAO 7110.65.
- 10-15. CURRENT DOCUMENTATION STANDARDS.
- 16-17. NO LONGER REQUIRED.
18. CURRENT DOCUMENTATION STANDARDS.
19. LOST COMM NO LONGER IN COMPLIANCE, REMOVED PER FPT/ATC.

FEDERAL AVIATION ADMINISTRATION
FLIGHT STANDARDS SERVICE
STANDARD TERMINAL ARRIVAL (STAR)

Bearings, headings, courses, tracks and radials are magnetic. Elevations and altitudes are in feet, MSL. Altitudes are minimum altitudes unless otherwise indicated.
Ceilings are in feet above airport elevation. Distances are in nautical miles. Visibilities are in statute miles or feet RVR unless otherwise indicated.

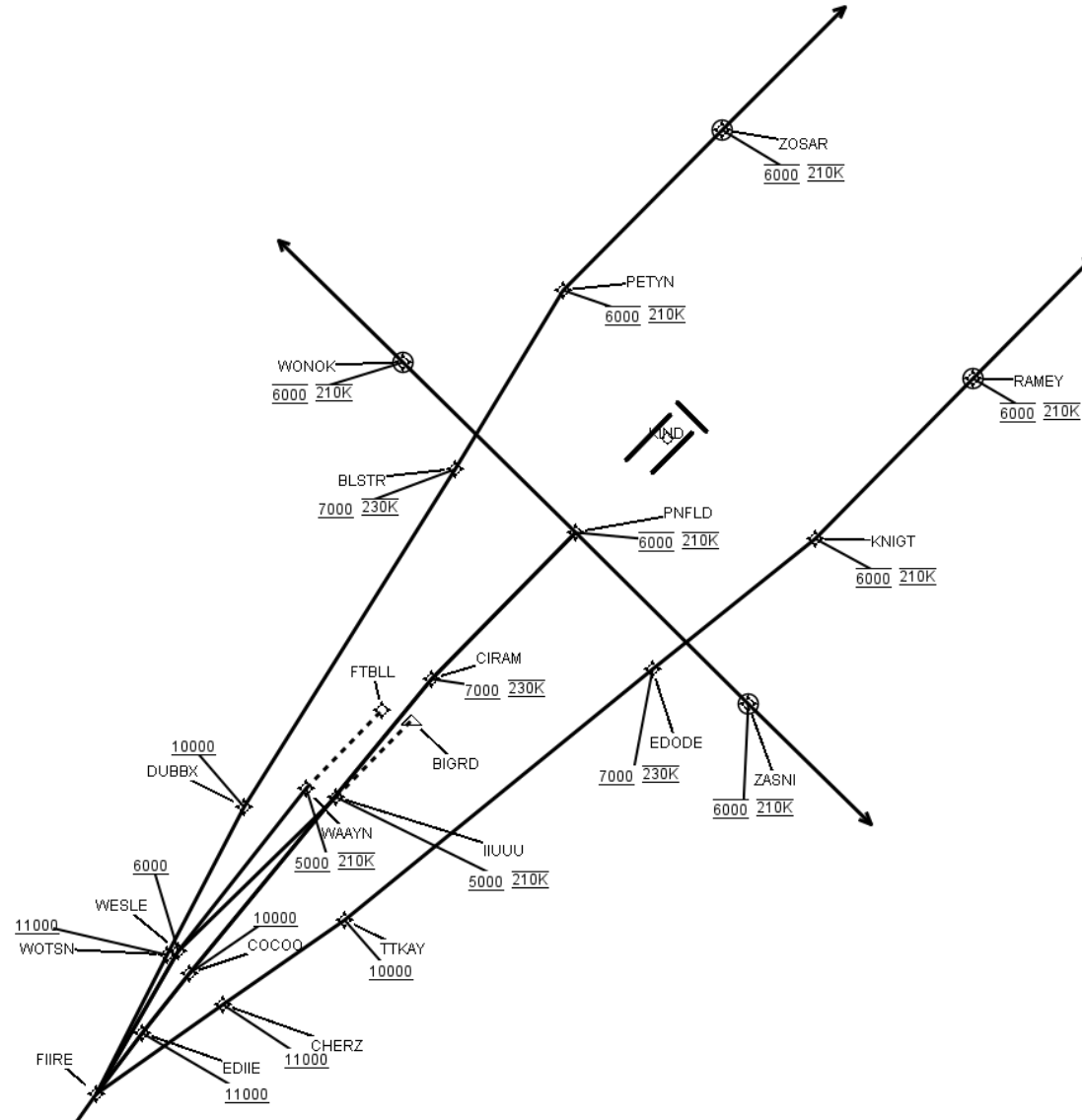
Arrival Name	Number	STAR Computer Code	Superseded Number	Dated	Effective Date
SMUKE (RNAV)	THREE	RACYR.SMUKE3	TWO	11/10/2016	11 JUL 2024
Graphic Depiction 1					



FEDERAL AVIATION ADMINISTRATION
FLIGHT STANDARDS SERVICE
STANDARD TERMINAL ARRIVAL (STAR)

Bearings, headings, courses, tracks and radials are magnetic. Elevations and altitudes are in feet, MSL. Altitudes are minimum altitudes unless otherwise indicated.
Ceilings are in feet above airport elevation. Distances are in nautical miles. Visibilities are in statute miles or feet RVR unless otherwise indicated.

Arrival Name	Number	STAR Computer Code	Superseded Number	Dated	Effective Date
SMUKE (RNAV)	THREE	RACYR.SMUKE3	TWO	11/10/2016	11 JUL 2024
Graphic Depiction 2					



FEDERAL AVIATION ADMINISTRATION
FLIGHT STANDARDS SERVICE
STAR (DATA RECORD)

Arrival Name SMUKE (RNAV)	Number THREE	STAR Computer Code RACYR.SMUKE3			Superseded Number TWO			Dated 11/10/2016	Effective Date 11 JUL 2024
<u>FIX/NAVAID</u>	<u>LAT/LONG</u>	<u>C</u>	<u>FO/FB</u>	<u>LEG TYPE</u>	<u>TC</u>	<u>DIST (NM)</u>	<u>ALTITUDE</u>	<u>SPEED</u>	<u>REMARKS</u>
En Route Transition									
EMBRR	383908.28N / 0871411.39W	Y		IF					EMBRR.SMUKE3
WOOTE	384952.18N / 0870612.05W	Y	FB	TF	030.20	12.41			
GAMLE	385719.15N / 0870037.91W	Y	FB	TF	030.27	08.62	15000BFL190		
RACYR	390642.57N / 0865350.64W	Y	FB	TF	029.38	10.77	12000BFL190		
En Route Transition									
TERGE	375542.47N / 0874544.19W	Y		IF					TERGE.SMUKE3
EMBRR	383908.28N / 0871411.39W	Y	FB	TF	029.63	49.99			
WOOTE	384952.18N / 0870612.05W	Y	FB	TF	030.20	12.41			
GAMLE	385719.15N / 0870037.91W	Y	FB	TF	030.27	08.62	15000BFL190		
RACYR	390642.57N / 0865350.64W	Y	FB	TF	029.38	10.77	12000BFL190		
En Route Transition									
WIDAM	385513.34N / 0882853.75W	Y		IF					WIDAM.SMUKE3
PAAAM	385712.09N / 0881310.16W	Y	FB	TF	080.76	12.43			
OLIFE	385821.98N / 0880343.09W	Y	FB	TF	080.98	07.46	FL240BFL260		
ATOTE	390434.26N / 0871223.10W	Y	FB	TF	080.92	40.48	15000BFL190		
RACYR	390642.57N / 0865350.64W	Y	FB	TF	081.48	14.59	12000BFL190		
Common Route									
RACYR	390642.57N / 0865350.64W	Y		IF			12000BFL190		RACYR.SMUKE3
SMUKE	391536.90N / 0864654.98W	Y	FB	TF	031.15	10.40			
FIIRE	392409.40N / 0863905.13W	Y	FB	TF	035.41	10.48			
Runway Transition									
FIIRE	392409.40N / 0863905.13W	Y		IF					
WESLE	392815.20N / 0863600.37W	Y	FB	TF	030.22	04.74	AT/ABOVE 6000		

FEDERAL AVIATION ADMINISTRATION
FLIGHT STANDARDS SERVICE
STAR (DATA RECORD)

Arrival Name SMUKE (RNAV)		Number THREE		STAR Computer Code RACYR.SMUKE3		Superseded Number TWO		Dated 11/10/2016	Effective Date 11 JUL 2024
FIX/NAVAID	LAT/LONG	C	FO/FB	LEG TYPE	TC	DIST (NM)	ALTITUDE	SPEED	REMARKS
WAAYN	393257.00N / 0863113.67W	Y	FB	TF	038.22	05.97	AT/ABOVE 5000	AT 210K	
KIND:RWY 5L									
Runway Transition									
FIIRE	392409.40N / 0863905.13W	Y		IF					
WESLE	392815.20N / 0863600.37W	Y	FB	TF	030.22	04.74	AT/ABOVE 6000		
IIUUU	393241.79N / 0863006.06W	Y	FB	TF	045.80	06.37	AT/ABOVE 5000	AT 210K	
KIND:RWY 5R									
Runway Transition									
FIIRE	392409.40N / 0863905.13W	Y		IF					
EDIIE	392553.56N / 0863720.36W	Y	FB	TF	037.95	02.20	AT/ABOVE 11000		
COCOO	392737.17N / 0863536.05W	Y	FB	TF	037.97	02.19	AT/ABOVE 10000		
CIRAM	393604.77N / 0862630.19W	Y	FB	TF	039.74	11.00	AT/ABOVE 7000	AT 230K	
PNFLD	394017.94N / 0862108.52W	Y	FB	TF	044.46	05.91	AT 6000	AT 210K	
WONOK	394512.96N / 0862736.21W	Y	FO	TF	314.61	07.00	AT 6000	AT 210K	
KIND:RWY 14				FM	314.61				
Runway Transition									
FIIRE	392409.40N / 0863905.13W	Y		IF					
CHERZ	392642.81N / 0863418.28W	Y	FB	TF	055.39	04.50	AT/ABOVE 11000		
TTKAY	392908.48N / 0862945.24W	Y	FB	TF	055.44	04.28	AT/ABOVE 10000		
EDODE	393622.38N / 0861814.30W	Y	FB	TF	050.89	11.47	AT/ABOVE 7000	AT 230K	
KNIGT	394006.75N / 0861209.40W	Y	FB	TF	051.47	06.00	AT 6000	AT 210K	
RAMEY	394444.58N / 0860614.30W	Y	FO	TF	044.60	06.50	AT 6000	AT 210K	
KIND:RWY 23L				FM	044.60				
Runway Transition									
FIIRE	392409.40N / 0863905.13W	Y		IF					
WOTSN	392809.05N / 0863624.10W	Y	FB	TF	027.51	04.50	AT/ABOVE 11000		

FEDERAL AVIATION ADMINISTRATION
FLIGHT STANDARDS SERVICE
STAR (DATA RECORD)

Arrival Name SMUKE (RNAV)		Number THREE		STAR Computer Code RACYR.SMUKE3			Superseded Number TWO		Dated 11/10/2016	Effective Date 11 JUL 2024
<u>FIX/NAVAID</u>	<u>LAT/LONG</u>	<u>C</u>	<u>FO/FB</u>	<u>LEG TYPE</u>	<u>TC</u>	<u>DIST (NM)</u>	<u>ALTITUDE</u>	<u>SPEED</u>	<u>REMARKS</u>	
DUBBX	393225.01N / 0863331.72W	Y	FB	TF	027.54	04.81	AT/ABOVE 10000			
BLSTR	394208.88N / 0862539.26W	Y	FB	TF	032.00	11.47	AT/ABOVE 7000	AT 230K		
PETYN	394717.16N / 0862136.14W	Y	FB	TF	031.31	06.01	AT 6000	AT 210K		
ZOSAR	395153.24N / 0861538.30W	Y	FO	TF	044.95	06.50	AT 6000	AT 210K		
KIND:RWY 23R				FM	044.95					
Runway Transition										
FIIRE	392409.40N / 0863905.13W	Y		IF						
EDIIE	392553.56N / 0863720.36W	Y	FB	TF	037.95	02.20	AT/ABOVE 11000			
COCOO	392737.17N / 0863536.05W	Y	FB	TF	037.97	02.19	AT/ABOVE 10000			
CIRAM	393604.77N / 0862630.19W	Y	FB	TF	039.74	11.00	AT/ABOVE 7000	AT 230K		
PNFLD	394017.94N / 0862108.52W	Y	FB	TF	044.46	05.91	AT 6000	AT 210K		
ZASNI	393523.19N / 0861440.95W	Y	FO	TF	134.49	07.00	AT 6000	AT 210K		
KIND:RWY 32				FM	134.49					