

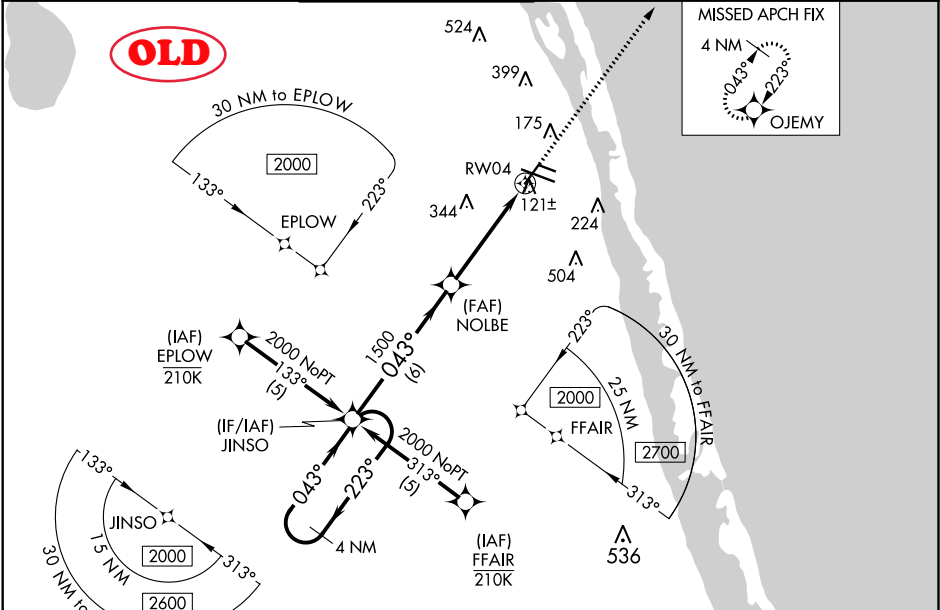
WAAS CH <b>61311</b> <b>W04A</b>	APP CRS <b>043°</b>	Rwy Idg TDZE <b>24</b> Apt Elev <b>24</b>	<b>4974</b>
--	------------------------	---	-------------

RNAV (GPS) RWY 4  
VERO BEACH RGNL (VRB)

**⚠** Circling to Rwy 30R NA at night. For uncompensated Baro-VNAV systems, LNAV/VNAV NA below 0°C (32°F) or above 54°C (130°F). DME/DME RNP-0.3 NA. When local altimeter setting not received, use Fort Pierce altimeter setting and increase all DA 23 feet and MDA 40 feet, increase LNAV/VNAV all Cats visibility 1/8 mile, LNAV Cat C/D visibility 1/4 mile and Circling Cat D visibility 1/4 mile. Baro-VNAV and VDP NA when using Fort Pierce altimeter setting.  
Rwy 4 helicopter visibility reduction below 3/4 SM NA.

MISSED APPROACH:  
Climb to 2000 direct  
OJEMY and hold.

ATIS <b>120.575</b>	PALM BEACH APP CON <b>123.625 225.4 (N)</b>	VERO BEACH TOWER ★ <b>126.3 (CTAF) 0</b>	GND CON <b>127.45</b>	CLNC DEL <b>134.975</b>	UNICOM <b>122.95</b>
------------------------	--	---	--------------------------	----------------------------	-------------------------



<div><div><div><div><div><div></div><div>ELEV 24</div></div><div><div>D</div><div>TDZE 24</div></div></div></div><div></div></div></div>					
<div><div><div><div><div><div>4 NM Holding Pattern</div><div>JINSO</div></div><div><div><div><div>2000</div><div>← 223°</div><div>043° →</div></div><div><div>GP 3.00° TCH 40</div></div></div><div><div><div><div>NOLBE</div><div>1500</div></div><div><div>*1.3 NM to RW04</div></div></div><div><div><div><div>1500</div><div>RW04</div></div><div><div>*LNAV only.</div></div></div></div><div><div><div><div>2000</div><div>↑</div></div><div><div>OJEMY</div><div></div></div></div></div><div><div><div><div>6 NM</div><div>3.2 NM</div><div>1.3</div></div></div></div></div></div></div></div></div></div>					
CATEGORY	A	B	C	D	
LPV DA	297-7⁄8		273 (300-7⁄8)		
LNAV/ VNAV DA	355-1 1⁄8		331 (400-1 1⁄8)		
LNAV MDA	480-1	456 (500-1)	480-1 3⁄8	456 (500-1 3⁄8)	
CIRCLING	560-1	536 (600-1)	560-1 1⁄2 536 (600-1 1⁄2)	660-2 636 (700-2)	

12R

12L

30L

30R

4574 X 100

3504 X 75

7314 X 106

TWR 143

043° to  
RW04

MIRL Rwy 4-22, 12R-30L,  
and 12L-30R **I**

REIL Rwy 4, 12R, 22 and 30L **I**

SE-3, 08 OCT 2020 to 05 NOV 2020

SE-3, 08 OCT 2020 to 05 NOV 2020



