

Flight Procedures Cover Page	Task Action: FLIGHT CHECK	Task Type: IAP	Estimated Chart Date: 10/31/2024	APWS Task ID: FF7BD165DDC447CFA59AE10111F67C63	APWS Project ID: 51A2C5C9E0F34046B8DE9CDEC4154ED2
Procedure: ILS OR LOC RWY 4 AMDT 8		Enroute: NO	Specialist: Armentrout, Britney		Agreement Number:
Airport ID: KHOB			Airport City: HOBBS		State: NM
Facility ID: HOB	Facility Type: ILS	Flight Inspection Remark Type: New FC Slot			
<div>Procedure Comments:</div> <div>PENDING KHOB AND I-HOB AIRNAV DATA USED. ACTIVE HOB VORTAC AND INK VORTAC AIRNAV USED.</div> <div>RUNWAY NUMBER CHANGED FROM ILS OR LOC RWY 3 TO ILS OR LOC RWY 4.</div> <div>CONTACT RAKE MCGRAW AJV-A422 954-8711.</div> <div><div>QUALITY 38 CHECKED</div><div>QUALITY 34 CHECKED</div></div>					

HOBBS, NEW MEXICO

AL-851 (FAA)

FIG

LOC/DME I-HOB <b>108.5</b> Chan <b>22</b>	APP CRS <b>038°</b>	Rwy Idg TDZE Apt Elev <b>7020</b> <b>3652</b> <b>3661</b>
---	------------------------	--

# ILS or LOC RWY 4 LEA COUNTY RGNL (HOB)

DME or RADAR required for procedure entry.

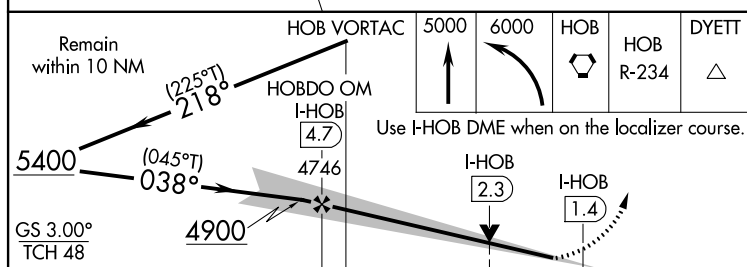
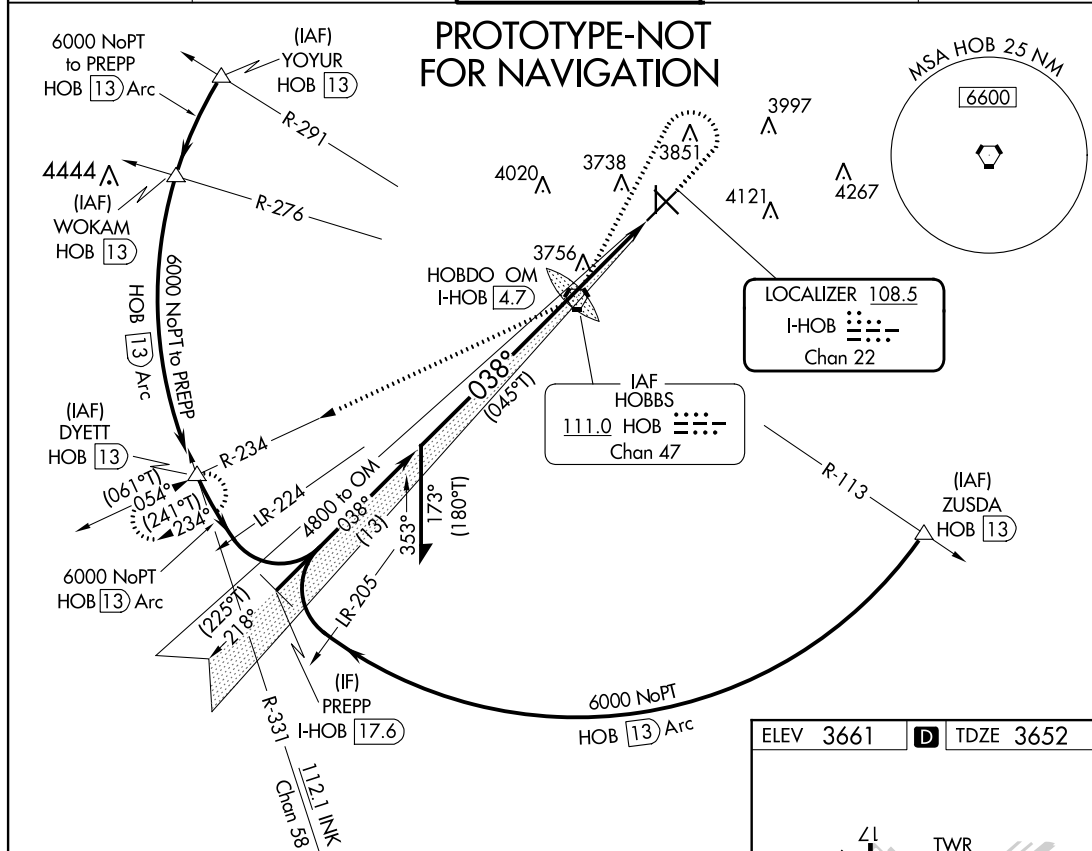
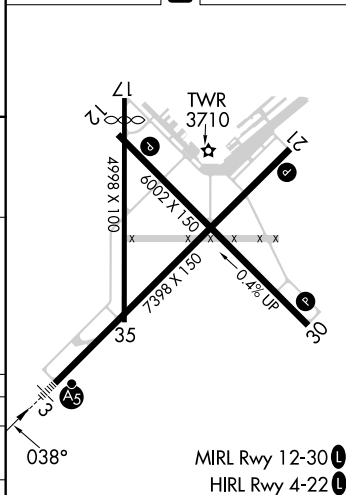
Circling Rwy 17, 35 NA at night.

MALSR



MISSED APPROACH: Climb to 5000 then climbing left turn to 6000 direct HOB VORTAC and on HOB VORTAC R-234 to DYETT INT/HOB 13 DME and hold.

ATIS <b>119.75</b>	FORT WORTH CENTER <b>133.1 298.95</b>	HOBBS TOWER ★ <b>120.65 (CTAF) 317.4</b>	GND CON <b>121.9</b>	UNICOM <b>122.95</b>
-----------------------	--	---	-------------------------	-------------------------

ELEV 3661 **D** TDZE 3652

CATEGORY	A	B	C	D
S-ILS 3	3852-½ 200 (200-½)			
S-LOC 3	4020-½ 368 (400-½)	4020-5/8 368 (400-5/8)		
CIRCLING	4120-1 459 (500-1)	4160-1 499 (500-1)	4440-2¼ 779 (800-2¼)	4440-2½ 779 (800-2½)

FAF to MAP 3.3 NM				
Knots	60	90	120	150
Min:Sec	3:18	2:12	1:39	1:19

HOBBS, NEW MEXICO

Amdt 8 FIG

32°41'N-103°13'W

# ILS or LOC RWY 4 LEA COUNTY RGNL (HOB)

AUTOMATED AL-851 ILS or LOC RWY 4

SW-1

7-11-24

COMPILER: JUN

REVIEWER:

DBL CHKR:

EFF: FIG

OLD

HOBBES, NEW MEXICO

23222


LOC/DME I-HOB	APP CRS	Rwy Idg	7020
108.5	038°	TDZE	3652
Chan 22		Apt Elev	3661

# ILS or LOC RWY 3

LEA COUNTY RGNL (HOB)

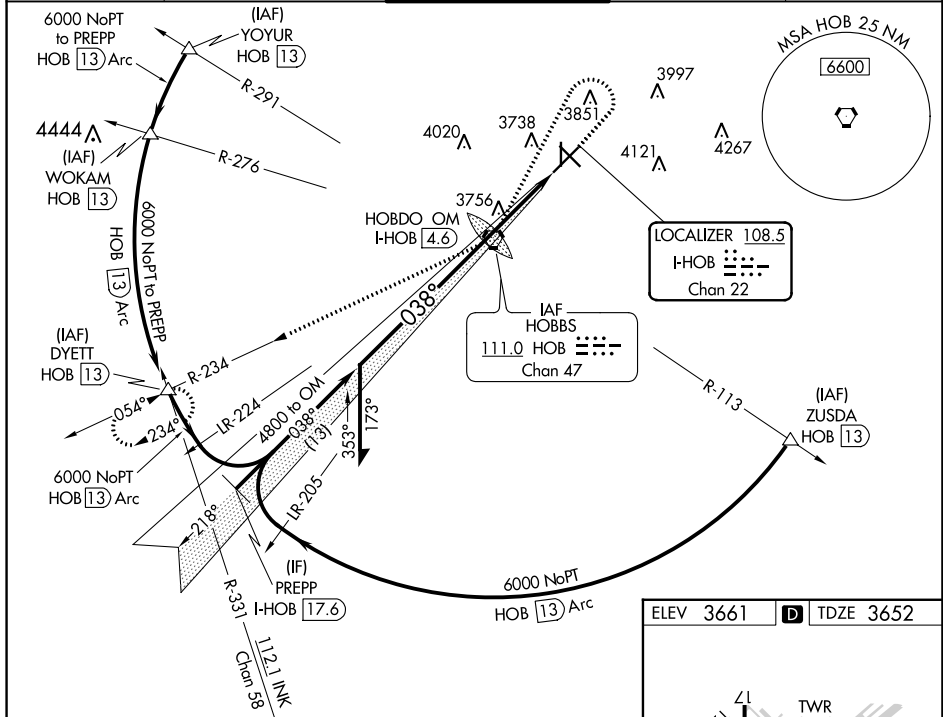
**⚠** When local altimeter setting not received, use Carlsbad altimeter setting and increase all DA 281 feet and all MDA 300 feet; increase S-ILS all Cats visibility  $\frac{3}{4}$  mile, increase S-LOC Cats C/D visibility  $\frac{3}{4}$  mile, increase Circling Cat C visibility  $\frac{3}{4}$  mile, increase Circling Cat D visibility  $\frac{1}{2}$  mile. For inoperative MALSR, increase Carlsbad altimeter setting S-ILS all Cats visibility to  $1\frac{3}{4}$ . VDP NA when using Carlsbad altimeter setting. Rwy 17 helicopter visibility reduction below 1 SM NA. Circling Rwy 17 NA at night.

MALSR



MISSED APPROACH: Climb to 5000 then dimbling left turn to 6000 direct HOB VORTAC then via HOB VORTAC R-234 to DYETT INT/HOB 13 DME and hold.

ATIS	FORT WORTH CENTER	HOBBES TOWER *	GND CON	UNICOM
119.75	133.1 298.95	120.65 (CTAF) 0 317.4	121.9	122.95



Remain within 10 NM

5300

218°

038°

GS 3.00°  
TCH 48

4800

4756

HOBBES TOWER  
(IAF)  
HOB 111.0  
HOB 13  
Chan 47

HOBBES VORTAC  
5000

6000

HOBBES  
HOB R-234

DYETT

Use I-HOB DME when on the localizer course.

\*I-HOB 2.3

\*LOC only.

2.3 NM

1 NM

ELEV 3661

TDZE 3652

038°

001 X 8667

8002 X 139

7398 X 150

0.4° UP

35

3710

TWR

MIRL Rwy 12-30

HIRL Rwy 3-21

FAF to MAP 3.3 NM

Knots	60	90	120	150	180
Min:Sec	3:18	2:12	1:39	1:19	1:06

CATEGORY	A	B	C	D
S-ILS 3		3852- $\frac{1}{2}$	200 (200- $\frac{1}{2}$ )	
S-LOC 3		4020- $\frac{1}{2}$	368 (400- $\frac{3}{4}$ )	4020- $\frac{3}{4}$ 368 (400- $\frac{3}{4}$ )
CIRCLING	4120-1 459 (500-1)	4160-1 499 (500-1)	4440-2 $\frac{1}{4}$ 779 (800-2 $\frac{1}{4}$ )	4440-2 $\frac{1}{2}$ 779 (800-2 $\frac{1}{2}$ )

HOBBES, NEW MEXICO

Amdt 7B 04JAN18

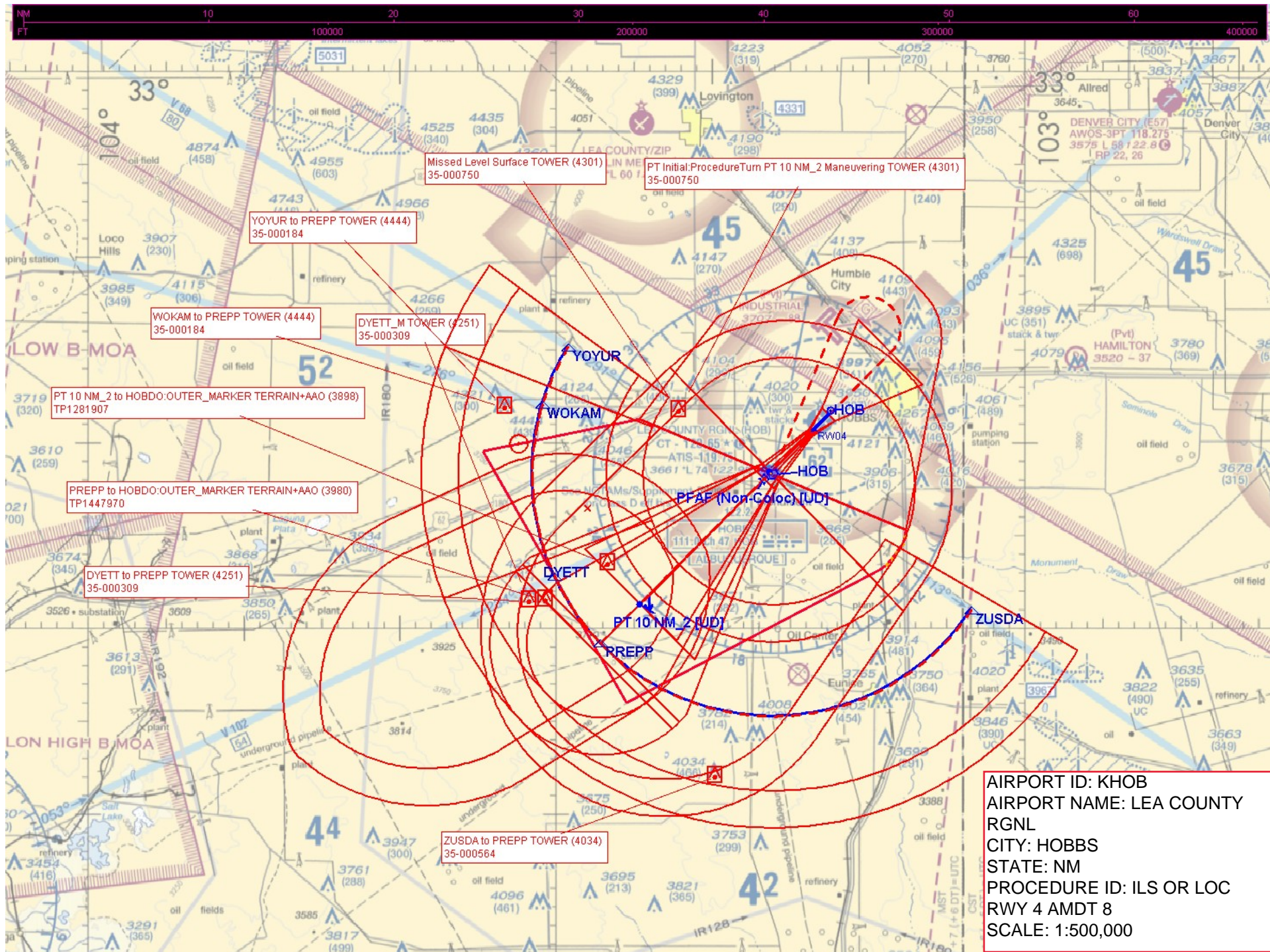
32°41'N-103°13'W

# ILS or LOC RWY 3

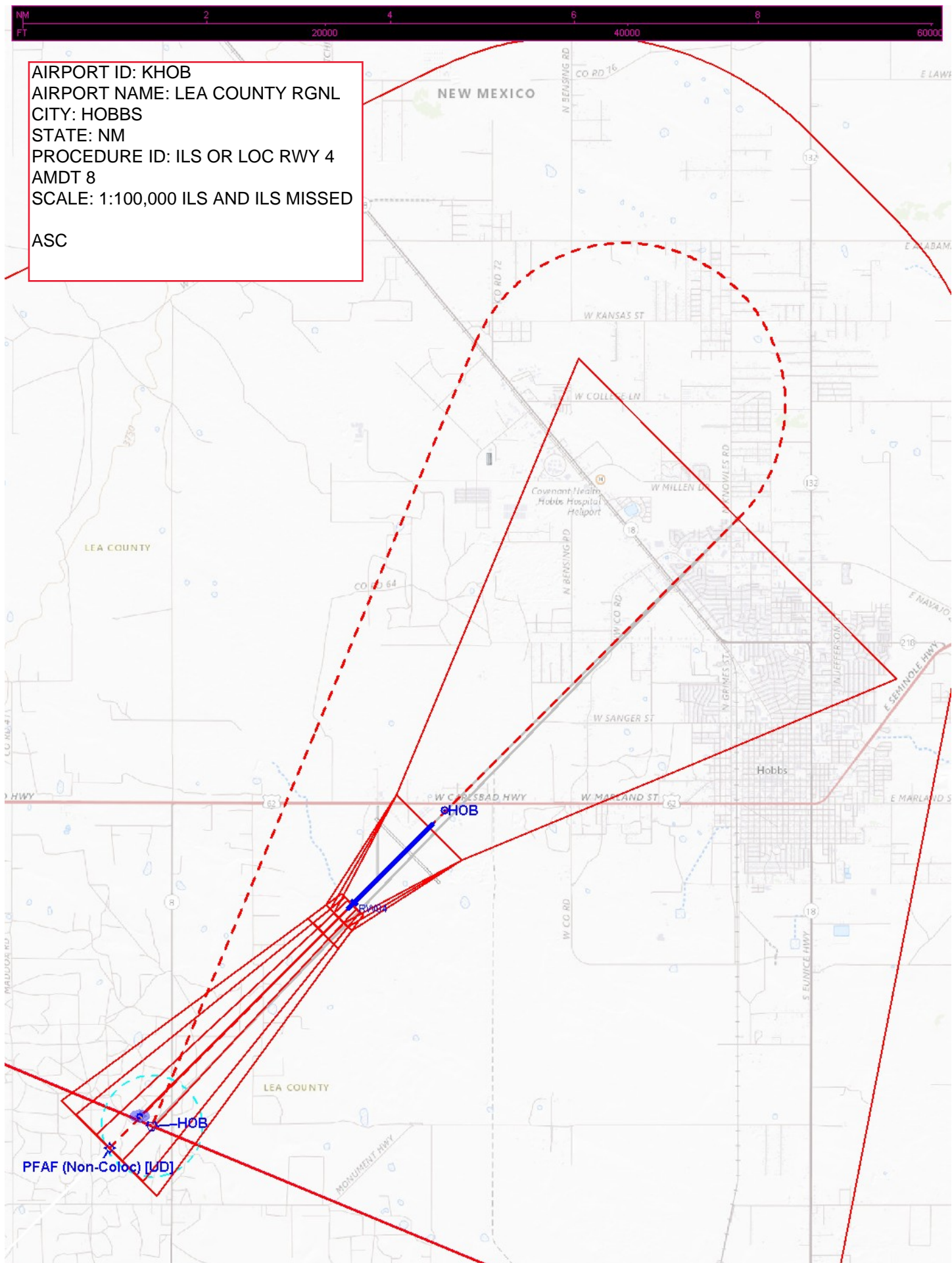
LEA COUNTY RGNL (HOB)

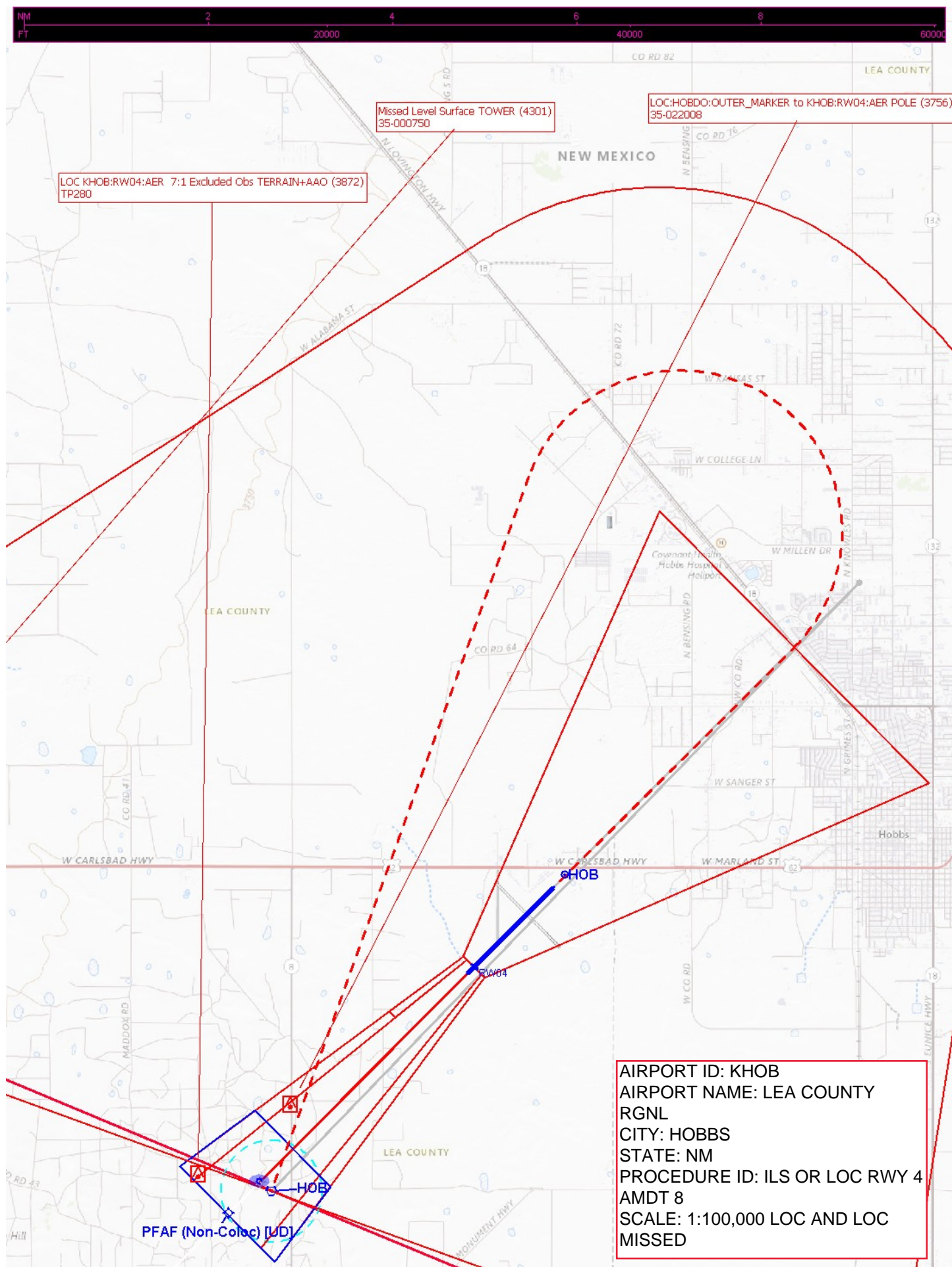
SW-1, 22 FEB 2024 to 21 MAR 2024



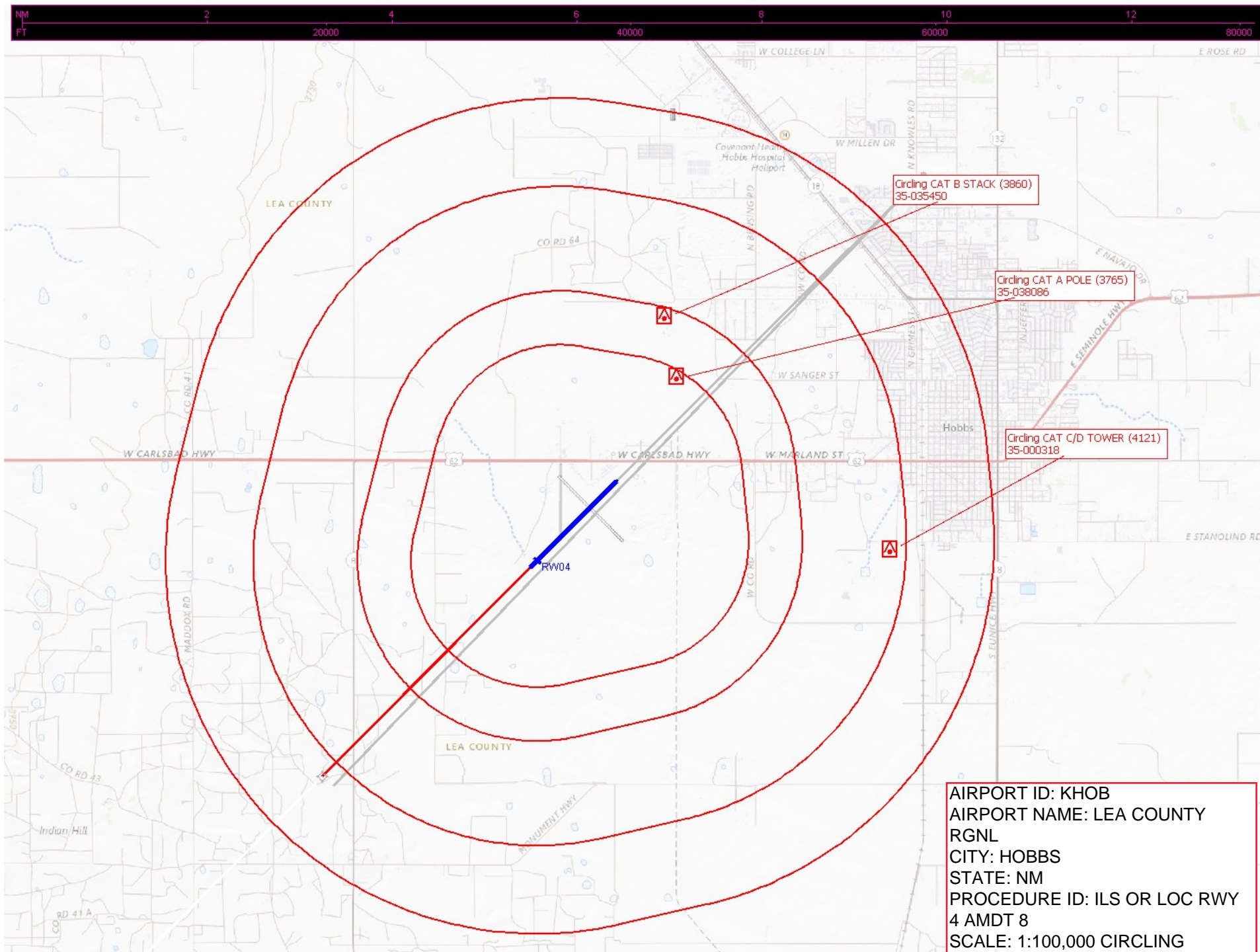












AIRPORT ID: KHOB  
AIRPORT NAME: LEA COUNTY  
RGNL  
CITY: HOBBS  
STATE: NM  
PROCEDURE ID: ILS OR LOC RWY  
4 AMDT 8  
SCALE: 1:100,000 CIRCLING