

WAAS CH 70719 W32A	APP CRS 323°	Rwy Idg TDZE 1766 Apt Elev 1766	ACTIVE PROCEDURE	RNAV (GPS) RWY 32 CORRY-LAWRENCE (8G2)
--	------------------------	---	-------------------------	--

RNP APCH.



Baro-VNAV NA. Rwy 32 helicopter visibility reduction below $\frac{3}{4}$ SM NA.
Use Jamestown NY altimeter setting; when not received, use Meadville altimeter setting and increase all DA 65 feet and all MDA 80 feet; increase LPV all Cats, LNAV/VNAV all Cats and LNAV Cat C visibility $\frac{1}{4}$ SM.

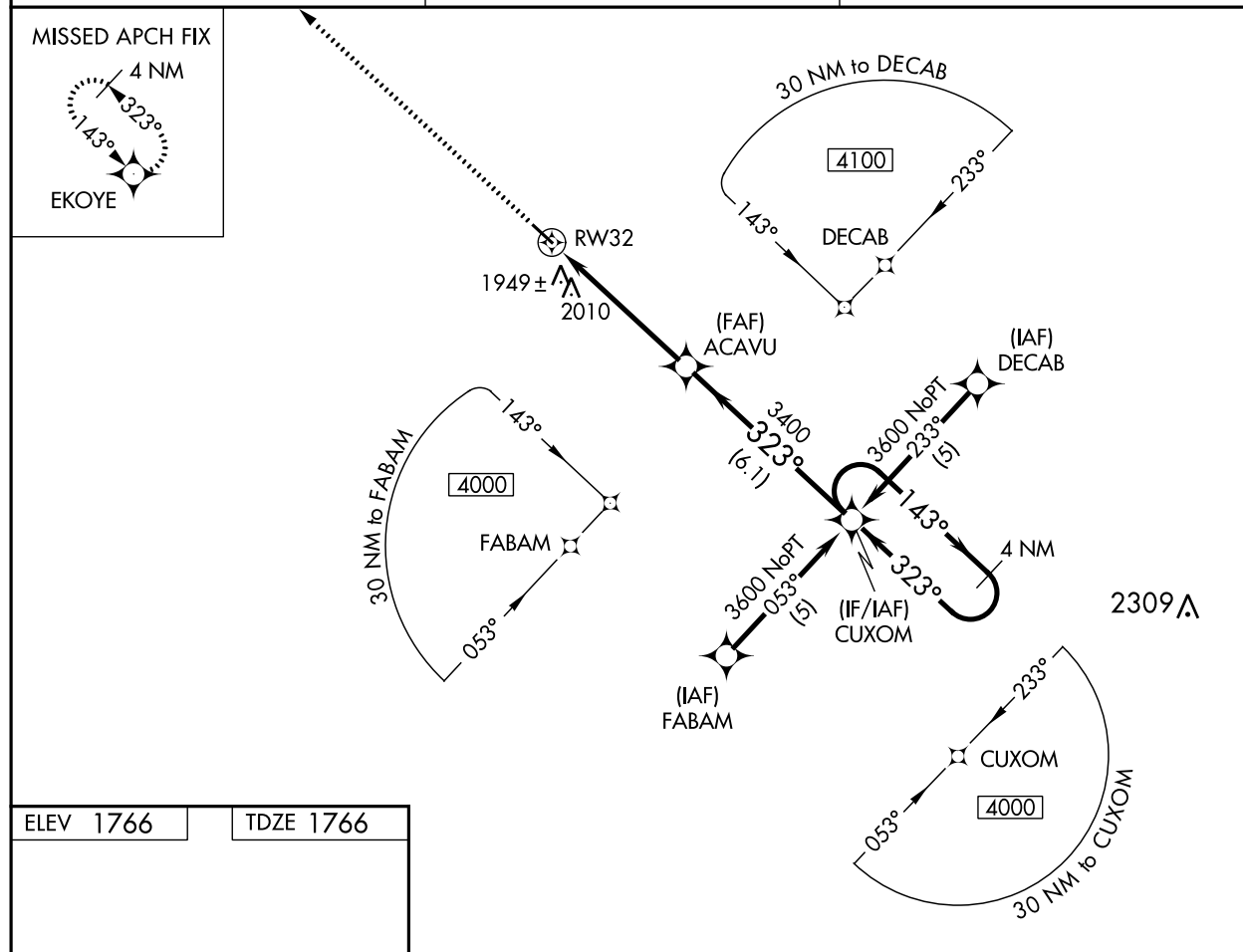
MISSED APPROACH: Climb to 3600 direct EKOYE and hold.

JHW AWOS-3PT
118.425

BUFFALO APP CON ★
121.0 257.8

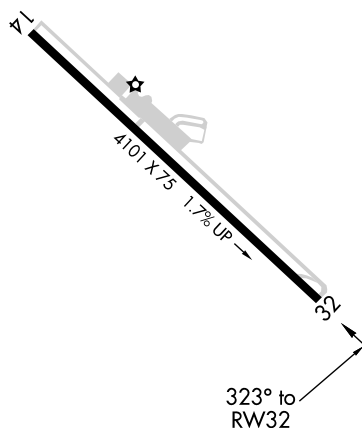
UNICOM
122.8 (CTAF) 0

MISSED APCH FIX

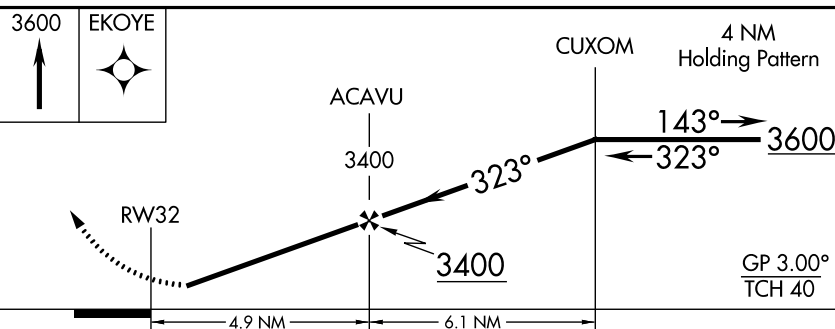


ELEV 1766

TDZE 1766



REIL Rwy 14 and 32 0
MIRL Rwy 14-32 0



CATEGORY	A	B	C	D
LPV DA	2074-1	308 (400-1)		NA
LNAV/VNAV DA	2324-2	558 (600-2)		NA
LNAV MDA	2340-1	574 (600-1)	2340-1½ 574 (600-1½)	NA

RNAV (GPS) RWY 32

CORRY-LAWRENCE (8G2)

WAAS CH 70719 W32A	APP CRS 323°	Rwy Idg 4101 TDZE 1766 Apt Elev 1766
--	------------------------	---

RNP APCH - GPS.

T Rwy 32 helicopter visibility reduction below 1 SM NA. Baro-VNAV NA.
A NA Use JHW altimeter setting; when not received, use GJK altimeter setting and increase LPV DA to 2140 feet; increase LNAV/VNAV DA to 2386 feet and all visibilities $\frac{1}{2}$ SM. Increase all MDAs 80 feet and LNAV visibility Cat C $\frac{1}{4}$ SM.

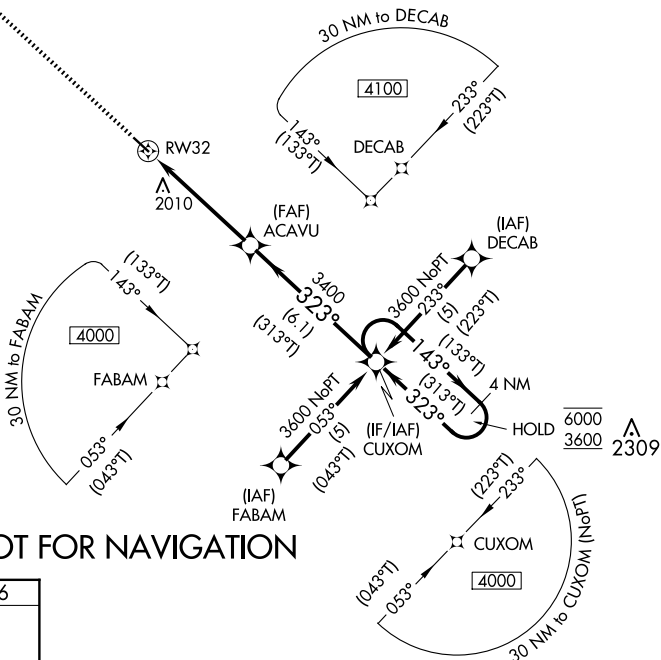
MISSED APPROACH: Climb to 3600 direct EKOYE and hold.

JHW AWOS-3PT
118.425

BUFFALO APP CON ★
121.0 257.8

UNICOM
122.8 (CTAF) **L**

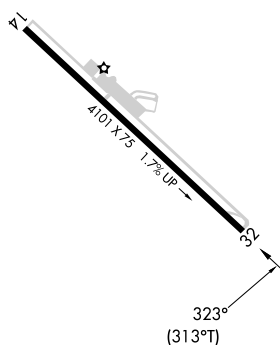
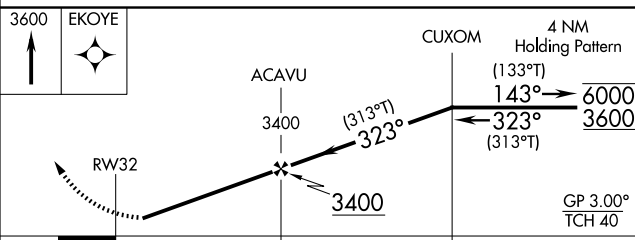
MISSED APCH FIX



PROTOTYPE-NOT FOR NAVIGATION

ELEV 1766

TDZE 1766

REIL Rwy 14 and 32 **L**
MIRL Rwy 14-32 **L**

CATEGORY		A	B	C	D
LPV	DA	2078-1 312 (400-1)			NA
RNAV/ VNAV	DA	2324-1 $\frac{5}{8}$ 558 (600-1 $\frac{5}{8}$)			NA
RNAV	MDA	2340-1 574 (600-1)		2340-1 $\frac{5}{8}$ 574 (600-1 $\frac{5}{8}$)	NA

FIPC BASIC FORM							
PROCEDURE: RNAV (GPS) RWY 32 AMDT 1B			AIRPORT NAME: CORY-LAWRENCE		AIRPORT ID: K8G2	SPECIAL CONTROL NO: YG-01-094-25	
FAC ID: K8G232.01		CITY: CORY			ST: PA	ORIG CHART DATE: 04/17/2025	
DFL TYPE: PROC/S	THIRD PARTY: <input type="checkbox"/> YES	EST. TIME ON SITE: 0.4	REIMB. NUMBER:		PTS TASK ID: FF0A3D6B6D8F4AD08F5F715262EC0062		
PREFLIGHT NOTES							
REVIEWER:					DATE:		
COMMENTS:					CHECK ONE:		
					<input type="checkbox"/> FLT CK REQ <input type="checkbox"/> NFCR <input type="checkbox"/> REJECT		
							YES
					CPV COMPLETE?		X
PROCEDURE RESULTS							
INSPECTION DATE: 03/21/2025		CREW #: VN528	N #: N70	INSTRUMENT PROCEDURE STATUS: <input checked="" type="checkbox"/> SAT <input type="checkbox"/> SAT W/CHANGES <input type="checkbox"/> UNSAT		ARINC CODING: <input checked="" type="checkbox"/> SAT <input type="checkbox"/> SAT/GOLD <input type="checkbox"/> UNSAT	
FLIGHT INSPECTOR SIGNATURE: davin c o'brien @ 03/21/2025 18:50			PRINTED NAME: OBRIEN, DAVIN CHRISTOPHER				NOTAM INITIATED? <input type="checkbox"/> YES <input checked="" type="checkbox"/> NO
FLIGHT INSPECTOR REMARKS: Procedures question: should RNAV RWY32 have 'Procedure NA at night' as does RNAV RWY14? No VGSI; 20:1 obstacles are not clear; circling approach could be assumed. Approach Plate, Chart Supplement and Data Sheet indicate REILs RWY32 and there are none / No commissioning date on DS / Will contact Airport Manager for clarification. MIRLs good.							
IN-FLIGHT OBSTACLE REPORT							
OBSTRUCTION ID #:	COORDINATES OR LOCATION:		GNSS ALTITUDE (MSL):		BAROMETRIC ALTITUDE (MSL):		HEIGHT ABOVE GROUND LEVEL:

[Print](#)

Project Name: 8G2 RNAV (GPS) RWY 32 Increased Mins

Project Reason: New LPV controlling obstacle found during amendment, raised LPV DA/HAT from 2074/308 HAT to 2078/312 HAT. LPV obs: TANK (42-030336) 415409.02N/0793752.21W 1822 2C. LNAV/VNAV and LNAV visibilities changed following visibility eval. Add chart note: Procedure NA at night due to 20:1 surface not clear.

Last Updated By: Jantzen Taylor

Last Updated At: 2025-03-25 17:29:39.754308

Status: Active

!FDC 5/7566 8G2 IAP CORRY-LAWRENCE, CORRY, PA. RNAV (GPS) RWY 32, AMDT 1A... LPV DA 2078/HAT 312. LNAV/VNAV CATS A/B/C VISIBILITY 1 5/8 SM. LNAV CAT C VISIBILITY 1 5/8 SM. PROCEDURE NA AT NIGHT. 2503251728-2703251728EST

Missed Level Surface
TOWER (2102)
42-134901

LPV TANK (1822)
42-030336

CORRY-LAWRENCE AIRPORT (8G2)
CORRY, PA
RNAV (GPS) RWY 32
LPV FINAL AND MISSED
NEW FINAL CONTROLLIGN OBS
100K, ASC

ACAVU

