

|  |                         |                                |                                     |   |  |
|--|-------------------------|--------------------------------|-------------------------------------|---|--|
| Flight Procedures Cover Page   | Task Action:<br>P-NOTAM | Task Type:<br>IAP              | Estimated Chart Date:<br>09/09/2021 | APWS Task ID:<br>FE9B03F8B008419F8250B0BD64BC52AF | APWS Project ID:<br>7F74AD0F5AC74A9382F2EF9C03ED99F4 |
| Procedure:<br>LOC/DME RWY 15 AMDT 0B   |                         | Enroute:<br>NO                 | Specialist:<br>Lafferty, James      |   | Agreement Number:                                    |
| Airport ID:<br>KHWY  |                         |                                | Airport City:<br>WARRENTON          |   | State:<br>VA   |
| Facility ID:   | Facility Type:          | Flight Inspection Remark Type: |                                     |   |  |
| <p>Procedure Comments:</p> <p>P-NOTAM</p> <p>This Cancels FDC 0/0247</p> <p>Order 8260.3, chapter 2, New Circling Criteria Applied</p> <p>Contact Dave Teffeteller at 202-267-5177</p> |                         |                                |                                     |   |  |



|               |         |          |      |
|---------------|---------|----------|------|
| LOC/DME I-HWY | APP CRS | Rwy Idg  | 5000 |
| 109.75        | 149°    | TDZE     | 327  |
| Chan 34 (Y)   |         | Apt Elev | 336  |

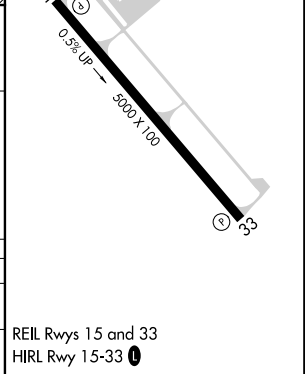
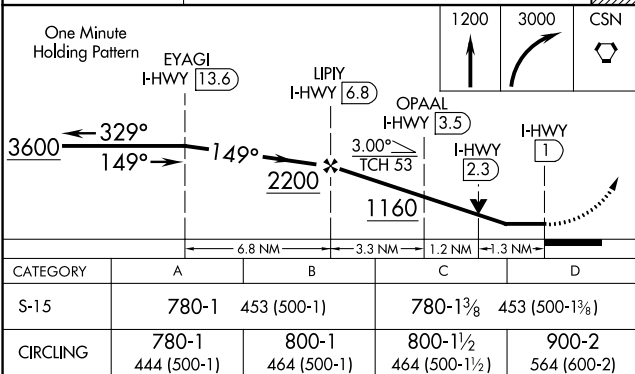
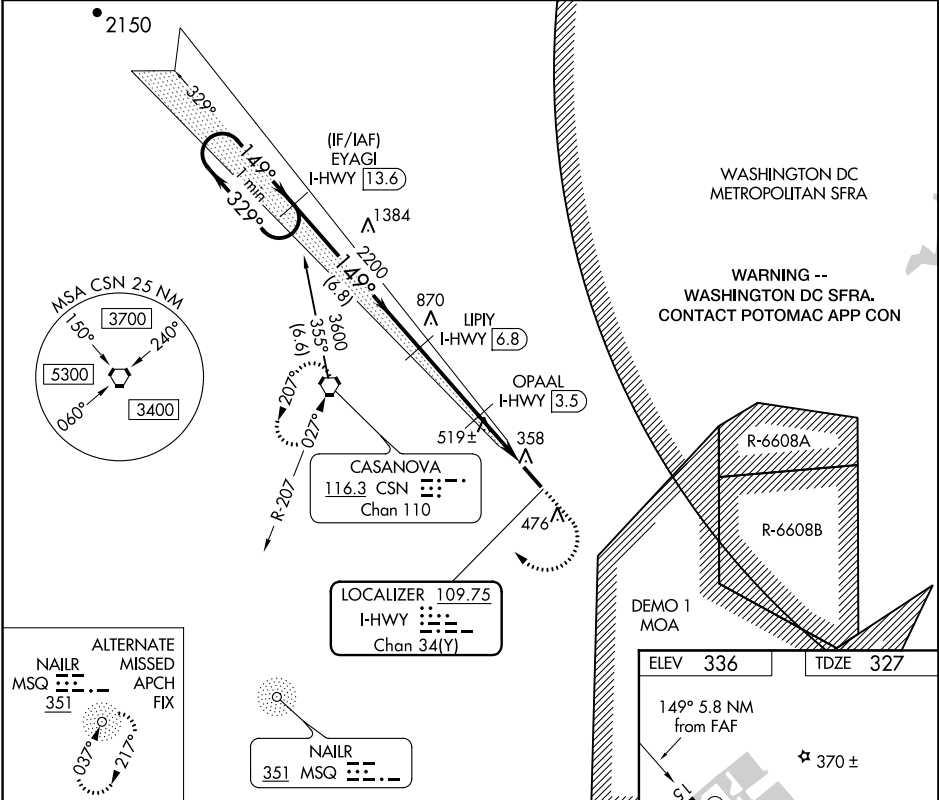
OLD

LOC/DME RWY 15  
WARRENTON-FAUQUIER (HWY)

▼ Helicopter visibility reduction below 3/4 SM NA. VDP NA with Culpeper altimeter setting. When local altimeter setting not received, use Culpeper altimeter setting and increase all MDA 40 feet.

⚠ NA MISSED APPROACH: Climb to 1200 then climbing right turn to 3000 direct CSN VORTAC and hold.

|                  |                       |                                    |                          |
|------------------|-----------------------|------------------------------------|--------------------------|
| AWOS-3<br>120.35 | CJR AWOS-3<br>119.325 | POTOMAC APP CON<br>128.525 306.925 | UNICOM<br>122.7 (CTAF) 0 |
|------------------|-----------------------|------------------------------------|--------------------------|



|                     |                 |                          |
|---------------------|-----------------|--------------------------|
| WARRENTON, VIRGINIA | 38°35'N-77°43'W | WARRENTON-FAUQUIER (HWY) |
| Orig-A 16OCT14      |                 | LOC/DME RWY 15           |

