

Flight Procedures Cover Page	Task Action: FLIGHT CHECK	Task Type: IAP	Estimated Chart Date: 10/02/2025	APWS Task ID: FD525FBF01534EEF9EC6144E185F2200	APWS Project ID: 002BD5FAE80447EF85187053D2019E59
Procedure: RNAV (GPS) RWY 10 AMDT 1C		Enroute: NO	Specialist: Davis, Patrick		Agreement Number:
Airport ID: 4I3			Airport City: MOUNT VERNON		State: OH
Facility ID:	Facility Type:	Flight Inspection Remark Type: New FC Slot			
<div>Procedure Comments:</div> <div>ACTIVE AIRPORT DATA USED.</div> <div>REMOVED MFD FEEDER SEGMENT TO USUDE. VOR DECOMMISSIONING.</div> <div>POC: ERIC SUSKI, AJV-A431 MANAGER, 405-954-7331</div> <div><div>QUALITY 38 CHECKED</div><div>QUALITY 29 CHECKED</div></div>					

MOUNT VERNON, OHIO

AL-5447 (FAA)

FIG

WAAS CH 63123 W10A	APP CRS 104°	Rwy Idg 5504 TDZE 1192 Apt Elev 1191
----------------------------------------	------------------------	-----------------------------------------------------------------

RNAV (GPS) RWY 10
KNOX COUNTY (4I3)

RNP APCH - GPS.



Rwy 10 helicopter visibility reduction below $\frac{3}{4}$ SM NA. For uncompensated Baro-VNAV systems, LNAV/VNAV NA below -17°C or above 54°C.

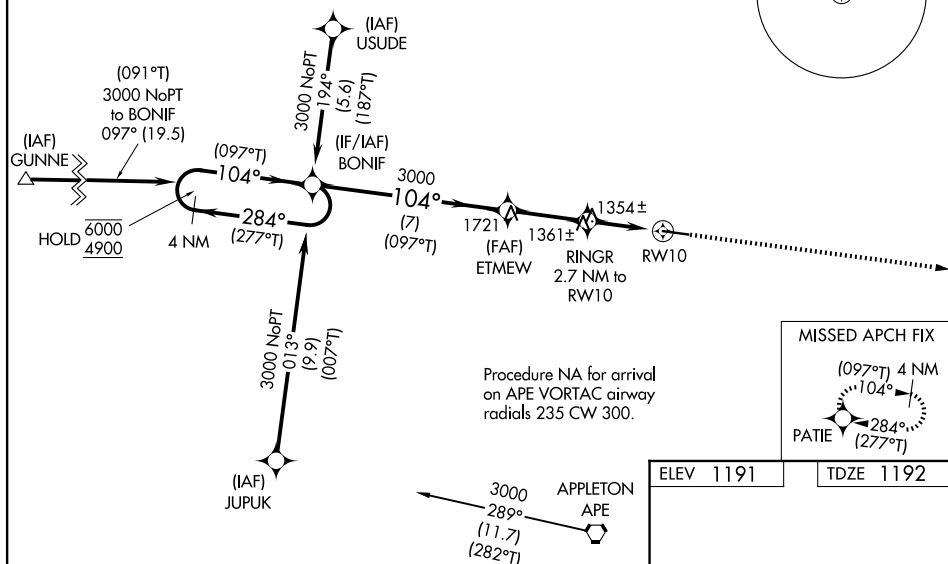
MISSED APPROACH: Climb to 2800 direct PATIE and hold.

AWOS-3
126.05

COLUMBUS APP CON
125.95 317.775

CLNC DEL
119.45UNICOM
123.05 (CTAF)

PROTOTYPE-NOT FOR NAVIGATION

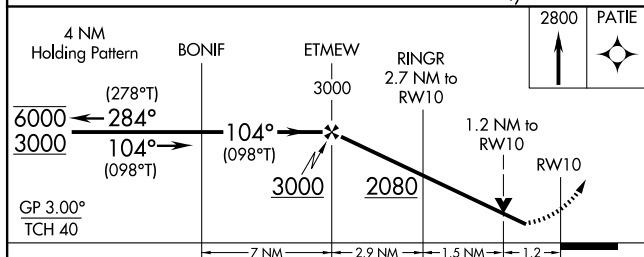


Procedure NA for arrival
on APE VORTAC airway
radials 235 CW 300.

MISSED APCH FIX

ELEV 1191

TDZE 1192



CATEGORY	A	B	C	D
LPV DA	1520-1 328 (400-1)			
LNAV/VNAV DA	1599-1½ 407 (500-1½)			
LNAV MDA	1620-1 428 (500-1)	1620-1¼ 428 (500-1¼)		

MOUNT VERNON, OHIO

Amdt 1C FIG

40°20'N-82°32'W

KNOX COUNTY (4I3)

RNAV (GPS) RWY 10

WAAS CH 63123 W10A	APP CRS 104°	Rwy ldg TDZE 1191 Apt Elev 1191	5504
----------------------------------------	------------------------	-----------------------------------------------------	-------------

OLD

RNAV (GPS) RWY 10
KNOX COUNTY (4I3)

RNP APCH.

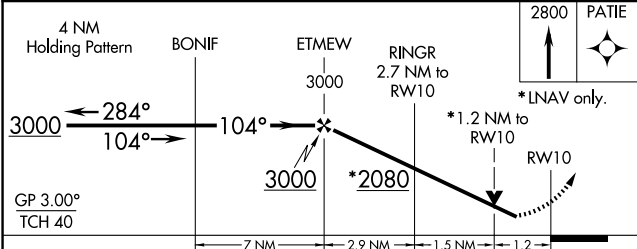
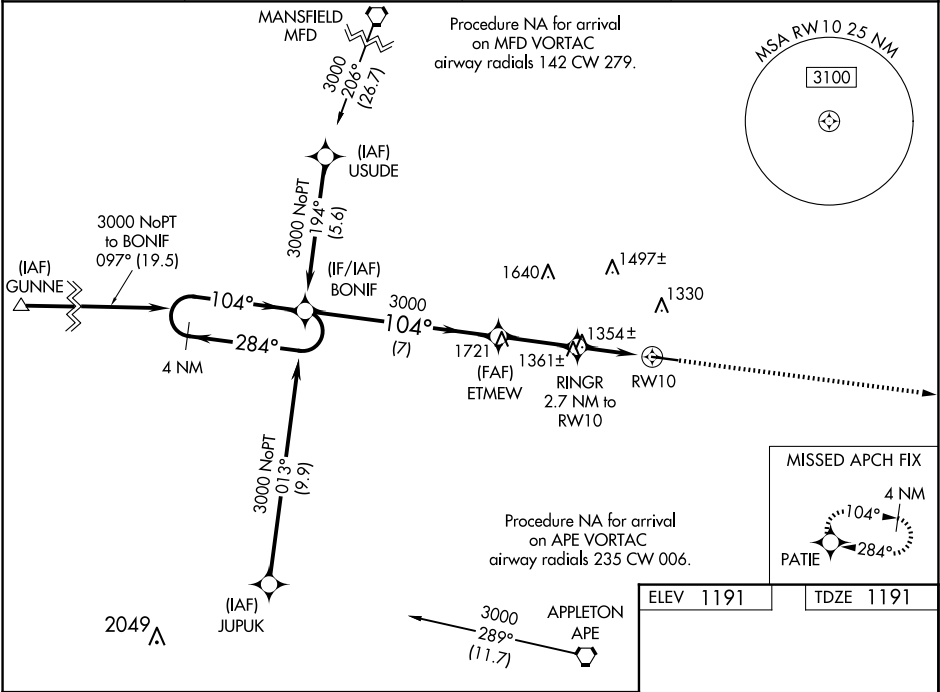
▼

▲

Baro-VNAV and VDP NA when using Newark altimeter setting. For uncompensated Baro-VNAV systems, LNAV/VNAV NA below -17°C (2°F) or above 36°C (96°F). When Local altimeter setting not received, use Newark altimeter setting and increase all DA 86 feet and all MDA 100 feet and increase LPV all Cats, LNAV/VNAV all Cats, LNAV Cat C and D visibility ¼ mile. Rwy 10 helicopter visibility reduction below ¾ SM NA.

MISSED APPROACH: Climb to 2800 direct PATIE and hold.

AWOS-3 126.05	COLUMBUS APP CON 125.95 317.775	CLNC DEL 119.45	UNICOM 123.05 (CTAF) 0
-------------------------	-------------------------------------------	---------------------------	----------------------------------



CATEGORY	A	B	C	D
LPV DA	1520-1½ 329 (400-1½)			
LNAV/VNAV DA	1516-1½ 325 (400-1½)			
LNAV MDA	1620-1 429 (500-1)		1620-1¼ 429 (500-1¼)	

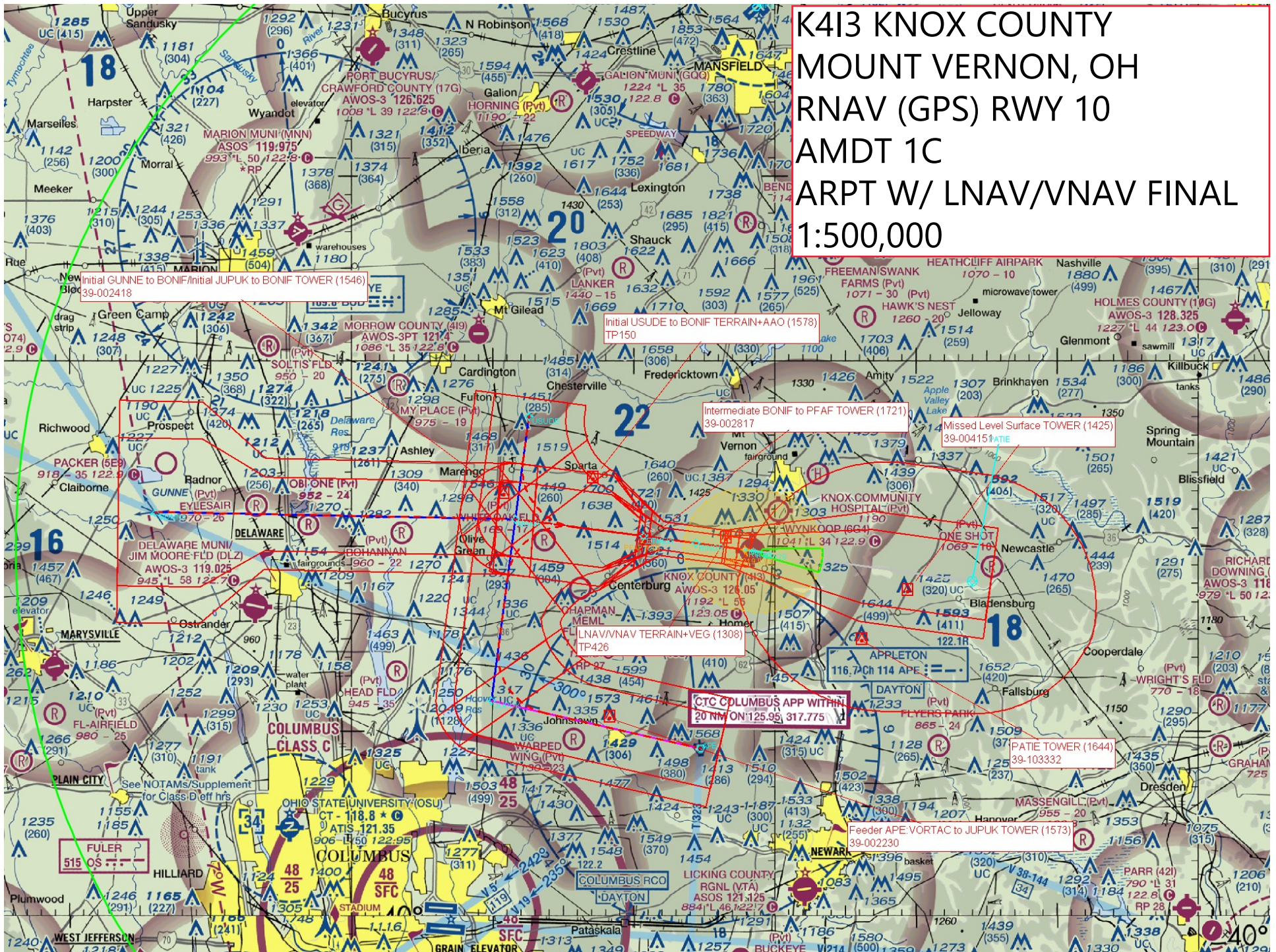
ELEV 1191 TDZE 1191

MIRL Rwy 10-28 0
REIL Rwy 10 and 28 0

EC-2, 20 FEB 2025 to 20 MAR 2025

EC-2, 20 FEB 2025 to 20 MAR 2025

K413 KNOX COUNTY
MOUNT VERNON, OH
RNAV (GPS) RWY 10
AMDT 1C
ARPT W/ LNAV/VNAV FINAL
1:500,000



K413 KNOX COUNTY
MOUNT VERNON, OH
RNAV (GPS) RWY 10
AMDT 1C
ARPT W/ LNAV/VNAV FINAL
1:100,000

LNAV/VNAV TERRAIN+VEG (1308)
TP426

Missed Level Surface TOWER (1425)
39-004151

K4I3 KNOX COUNTY
MOUNT VERNON, OH
RNAV (GPS) RWY 10
AMDT 1C
ARPT W/ LNAV/VNAV FINAL
1:100,000

LNAV/VNAV TERRAIN+VEG (1308)
TP426

Missed Level Surface TOWER (1425)
39-004151

K4I3 KNOX COUNTY
MOUNT VERNON, OH
RNAV (GPS) RWY 10
AMDT 1C
ARPT W/ LNAV/VNAV FINAL
1:100,000

LNAV/VNAV TERRAIN+VEG (1308)
TP426

Missed Level Surface TOWER (1425)
39-004151

**K413 KNOX COUNTY
MOUNT VERNON, OH
RNAV (GPS) RWY 10
AMDT 1C
ARPT W/ LNAV FINAL
1:100,000**

