

Flight Procedures Cover Page	Task Action: FLIGHT CHECK	Task Type: IAP	Estimated Chart Date: 06/12/2025	APWS Task ID: FC8E7D07D425462C8898ECE52AF6AD29	APWS Project ID: 3A86C31F54404734BC3E786F6C9AFCA1
Procedure: RNAV (GPS) RWY 4R AMDT 3		Enroute: NO	Specialist: Blanco, Joseph		Agreement Number:
Airport ID: KJFK			Airport City: NEW YORK		State: NY
Facility ID:	Facility Type:	Flight Inspection Remark Type: New FC Slot			
<div>Procedure Comments: ACTIVE AIRPORT DATA USED REASON FOR PROJECT: AMEND MISSED APPROACH TO TURN SE. CONTACT CASIMIR TABAKA 405-954-7931</div> <div><div>QUALITY 38 CHECKED</div><div>QUALITY 34 CHECKED</div></div>					

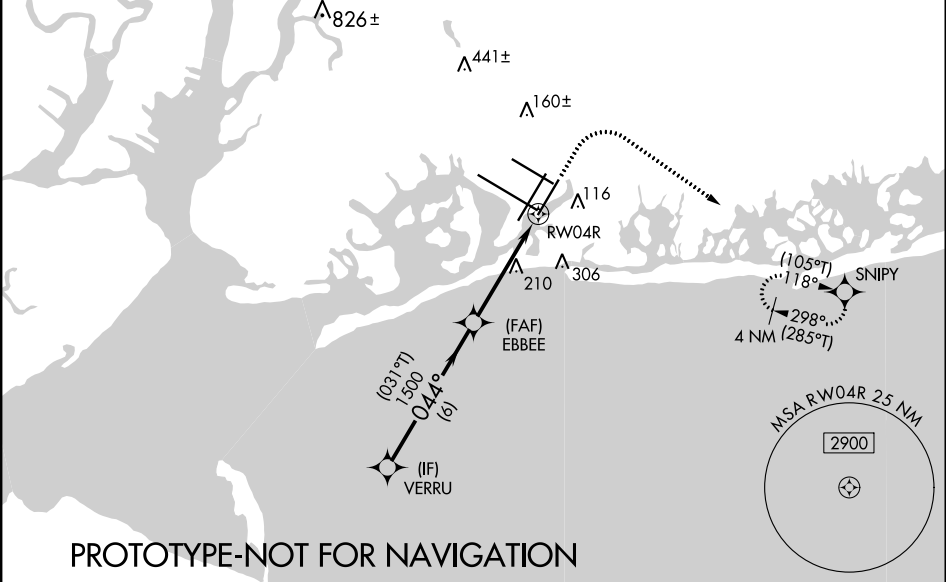
WAAS CH 81819 W04B	APP CRS 044°	Rwy Idg 8400 TDZE 12 Apt Elev 13
--	------------------------	---

RNAV (GPS) RWY 4R

JOHN F KENNEDY INTL (JFK)

RNP APCH - GPS.	ALSIF-2 	MISSED APPROACH: Climb to 520 then right climbing turn to 2000 direct SNIPY and hold.
 Simultaneous approach authorized. LNAV procedure NA during simultaneous operations. For uncompensated Baro-VNAV systems, LNAV/VNAV NA below -12°C or above 54°C. For inop ALS, increase LNAV Cat C/D visibility to 1 3/8 SM. Use of FD or AP required during simultaneous operations.		

D-ATIS (ARR/DEP) (ARR-NE) (ARR-SW)	NEW YORK APP CON	KENNEDY TOWER Rwys 4R/22L and 13L/31R Rwys 4L/22R and 13R/31L	GND CON	CLNC DEL	CPDLC
128.725 117.7 115.4	128.125 269.0	119.1 281.55 123.9 281.55	121.9 348.6	135.05 348.6	



ELEV 13		D		TDZE 12	
VGSI and RNAV glidepath not coincident (VGSI Angle 3.00/TCH 69°).					
CATEGORY	A	B	C	D	
LPV DA	212/18		200 (200-1/2)		
LNAV/VNAV DA	438/40		426 (500-3/4)		
LNAV MDA	520/24 508 (600-1/2)		520/55 508 (600-1)		
CIRCLING	640-1 627 (700-1)		700-2 687 (700-2)		700-2 1/4 687 (700-2 1/4)

NEW YORK, NEW YORK

AL-610 (FAA)

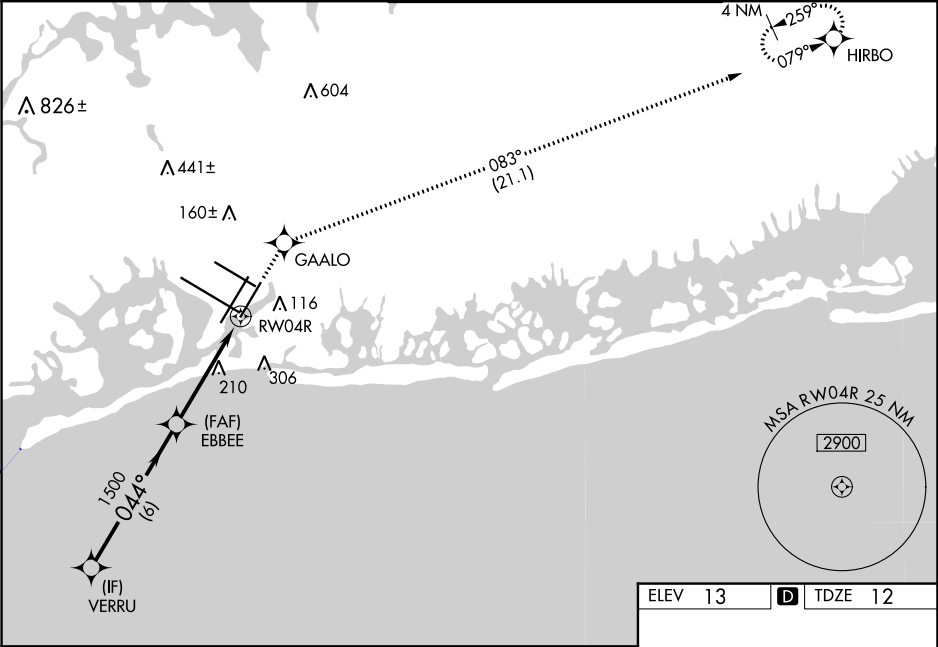
24249

WAAS CH 81819 W04B	APP CRS 044°	Rwy Idg 8400 TDZE 12 Apt Elev 13
--	------------------------	---

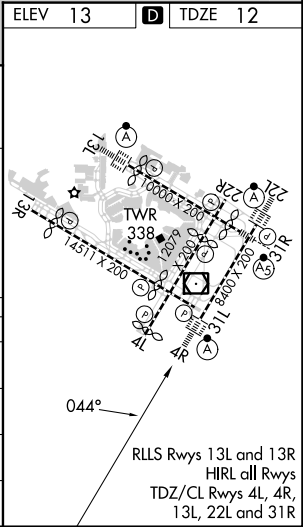
OLD

RNAV (GPS) Y RWY 4R
JOHN F KENNEDY INTL (JFK)

RNP APCH.			<div>ALSF-2</div> <div><div><div></div><div></div><div></div><div></div><div></div></div><div>A</div></div>		MISSED APPROACH: (Do not exceed 210K until GAALO) Climb to 4000 direct GAALO and on track 083° to HIRBO and hold.		
<div><div><div><div></div><div></div></div><div>Simultaneous approach authorized. LNAV procedure NA during simultaneous operations. Use of FD or AP providing RNAV track guidance required during simultaneous operations. For uncompensated Baro-VNAV systems, LNAV/VNAV NA below -12°C or above 54°C. For inop ALS, increase LNAV/VNAV all Cats visibility to RVR 6000 and LNAV Cat C/D visibility to 1½ SM.</div></div></div>							
D-ATIS (ARR/DEP) (ARR-NE) (ARR-SW)		NEW YORK APP CON	KENNEDY TOWER		GND CON	CLNC DEL	CPDLC
128.725 117.7 115.4		128.125 269.0	Rwys 4R/22L and 13L/31R 119.1 281.55 Rwys 4L/22R and 13R/31L 123.9 281.55		121.9 348.6	135.05 348.6	



VGSI and RNAV glidepath not coincident (VGSI Angle 3.00/TCH 69).				4000	GAALO	tr 083°	HIRBO
VERRU							
2000				044°	EBBEE	1500	
GP 3.00° TCH 53				1500			
				6 NM	3.1 NM	1.4 NM	
CATEGORY	A	B	C	D			
LPV DA	212/18 200 (200-½)						
LNAV/ VNAV DA	369/40 357 (400-¾)						
LNAV MDA	520/24 508 (600-½)		520/55 508 (600-1)				
CIRCLING	640-1 627 (700-1)		680-1¾ 667 (700-1¾)		680-2 667 (700-2)		



NEW YORK, NEW YORK
Amdt 2B 21MAY20

40°38'N-73°47'W

JOHN F KENNEDY INTL (JFK)
RNAV (GPS) Y RWY 4R

NE-2, 03 OCT 2024 to 31 OCT 2024

NE-2, 03 OCT 2024 to 31 OCT 2024

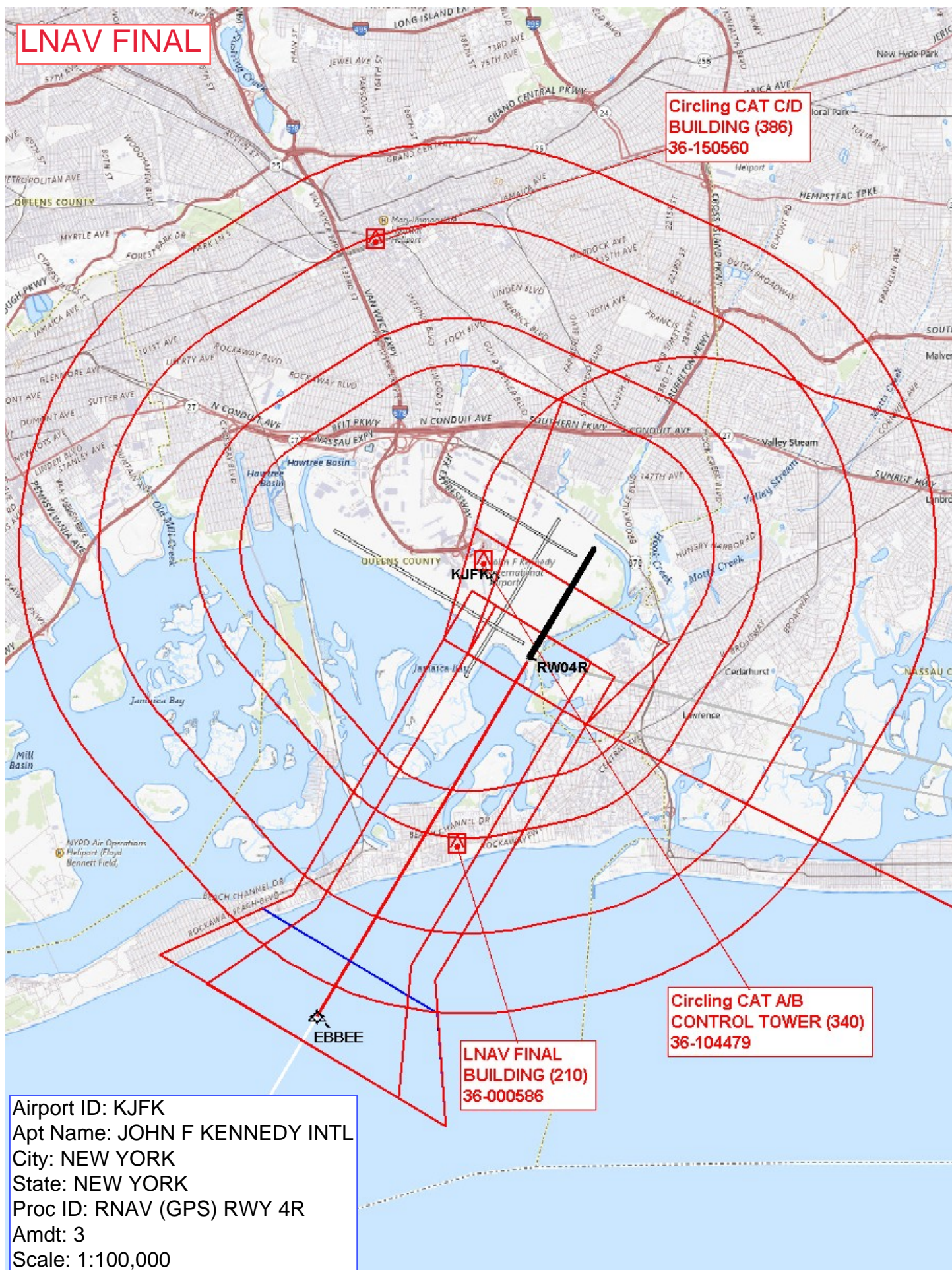
LNAV FINAL

**Circling CAT C/D
BUILDING (386)
36-150560**

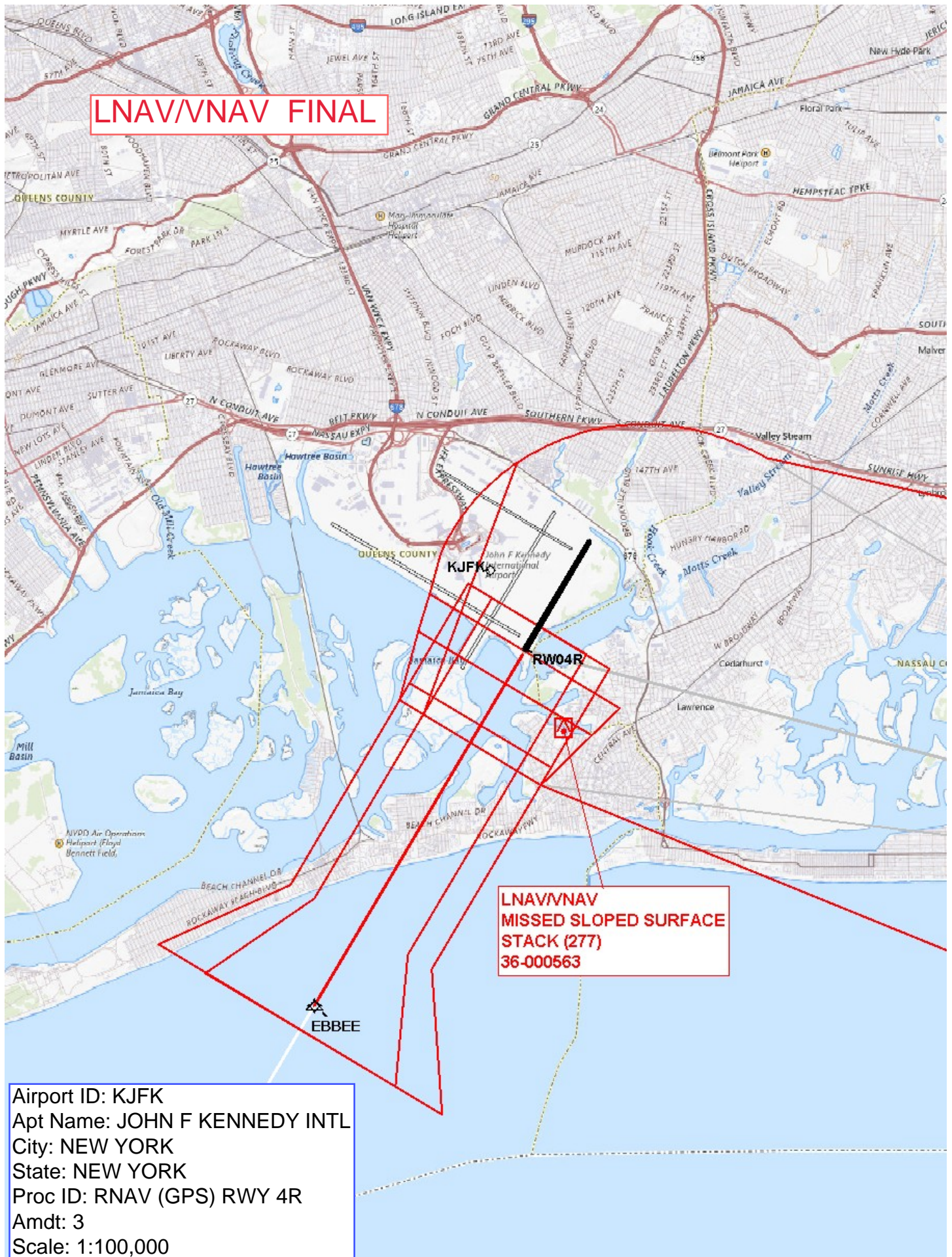
**LNAV FINAL
BUILDING (210)
36-000586**

**Circling CAT A/B
CONTROL TOWER (340)
36-104479**

Airport ID: KJFK
Apt Name: JOHN F KENNEDY INTL
City: NEW YORK
State: NEW YORK
Proc ID: RNAV (GPS) RWY 4R
Amdt: 3
Scale: 1:100,000



LNAV/VNAV FINAL



**LNAV/VNAV
MISSED SLOPED SURFACE
STACK (277)
36-000563**

Airport ID: KJFK
Apt Name: JOHN F KENNEDY INTL
City: NEW YORK
State: NEW YORK
Proc ID: RNAV (GPS) RWY 4R
Amdt: 3
Scale: 1:100,000

LPV FINAL
ASC

