

Flight Procedures Cover Page	Task Action: P-NOTAM	Task Type: IAP	Estimated Chart Date: 03/25/2021	APWS Task ID: FC53852FC9174666AB7CF071316767D0	APWS Project ID: AD04AFDF3CEC4028ACC2F8AA3C6C90D5
Procedure: VOR/DME RWY 13 AMDT 5C		Enroute: NO	Specialist: Lafferty, James		Agreement Number:
Airport ID: KSNY	Airport Name: SIDNEY MUNI/LLOYD W CARR FIELD	Airport City: SIDNEY			State: NE
Facility ID:	Facility Type:	Flight Inspection Remark Type:			
<div> <div>Procedure Comments:</div> <div> <p>P-NOTAM</p> <p>This Cancels FDC 9/4494.</p> <p>Order 8260.3, chapter 2, New Circling Criteria Applied</p> <p>Contact Dave Teffeteller at 202-267-5177</p> </div> <div> <div>QUALITY</div> <div>23</div> <div>CHECKED</div> </div> </div>					

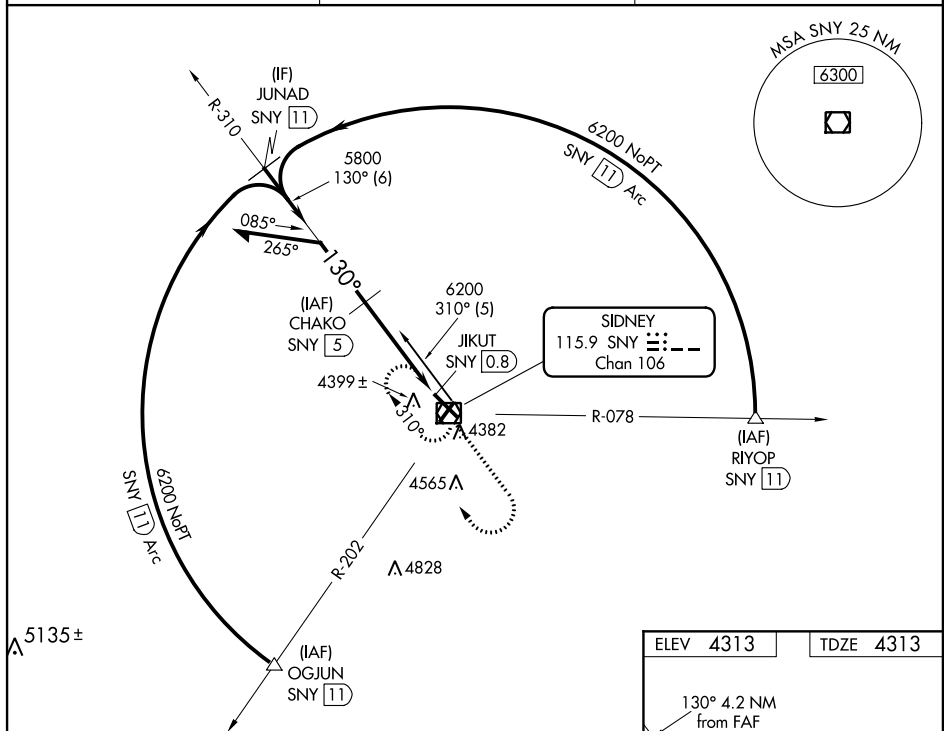
VOR/DME SNY <b>115.9</b> Chan <b>106</b>	APP CRS <b>130°</b>	Rwy Idg <b>6600</b> TDZE <b>4313</b> Apt Elev <b>4313</b>
--	------------------------	---

VOR/DME RWY 13  
SIDNEY MUNI/LLOYD W CARR FIELD (SNY)

**V** VDP NA when using Kimball altimeter setting. When local  
**A** altimeter setting not received, use Kimball altimeter setting  
and increase all MDA 160 feet and S-13 Cats C and D  
visibility ½ mile, Circling Cats C and D visibility ¼ mile.

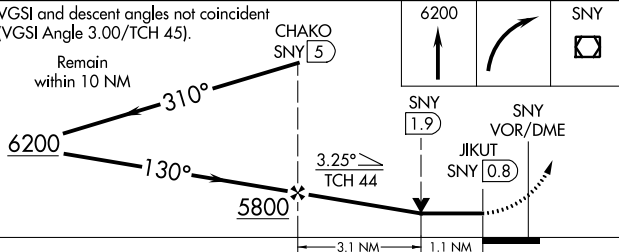
**MISSED APPROACH:** Climb to 6200 then right turn direct SNY VOR/DME and hold.

ASOS <b>125.775</b>	DENVER CENTER <b>118.475 225.4</b>	UNICOM <b>122.8 (CTAF) 0</b>
------------------------	---------------------------------------	---------------------------------

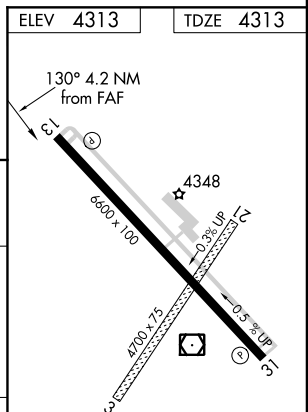


VGSI and descent angles not coincident  
(VGSI Angle 3.00/TCH 45).

Remain  
within 10 NM



CATEGORY	A	B	C	D
S-13	4700-1 387 (400-1)			4700-1¼ 387 (400-1¼)
CIRCLING	4760-1 447 (500-1)	4780-1 467 (500-1)	4780-1½ 467 (500-1½)	4880-2 567 (600-2)

REIL Rwys 13 and 31 **L**HIRL Rwy 13-31 **L**

SIDNEY, NEBRASKA

Amdt 5B 15SEP16

SIDNEY MUNI/LLOYD W CARR FIELD (SNY)

41°06'N-102°59'W

VOR/DME RWY 13

NC-2, 15 SEP 2016 to 13 OCT 2016

NC-2, 15 SEP 2016 to 13 OCT 2016

