

Flight Procedures Cover Page	Task Action: Cancellation	Task Type: IAP	Estimated Chart Date: 02/23/2023	APWS Task ID: FC02D1E397164EEB888784E885C43FBB	APWS Project ID: 74288EABE32C429386D4C2CA1D863E1F
Procedure: LOC RWY 23 AMDT 2C		Enroute: NO	Specialist: Teffeteller, David		Agreement Number:
Airport ID: KCEY			Airport City: MURRAY		State: KY
Facility ID:	Facility Type:	Flight Inspection Remark Type:			
<div>Procedure Comments:</div> <div>CONTACT DAVE TEFFETELLER/240-457-1998</div> <div>11/29/2022 THIS IS A CORRECTED COPY OF THE FORM APPROVED ON 08/08/22 ROUTINE ADDED TO REQUIRED EFFECTIVE DATE</div> <div>QUALITY 50 CHECKED</div>					

LOC I-EUY 110.5	APP CRS 232°	Rwy Idg TDZE Apt Elev	6202 568 577
---------------------------	------------------------	-----------------------------	---

LOC RWY 23

KYLE-OAKLEY FLD (CEY)

⚠

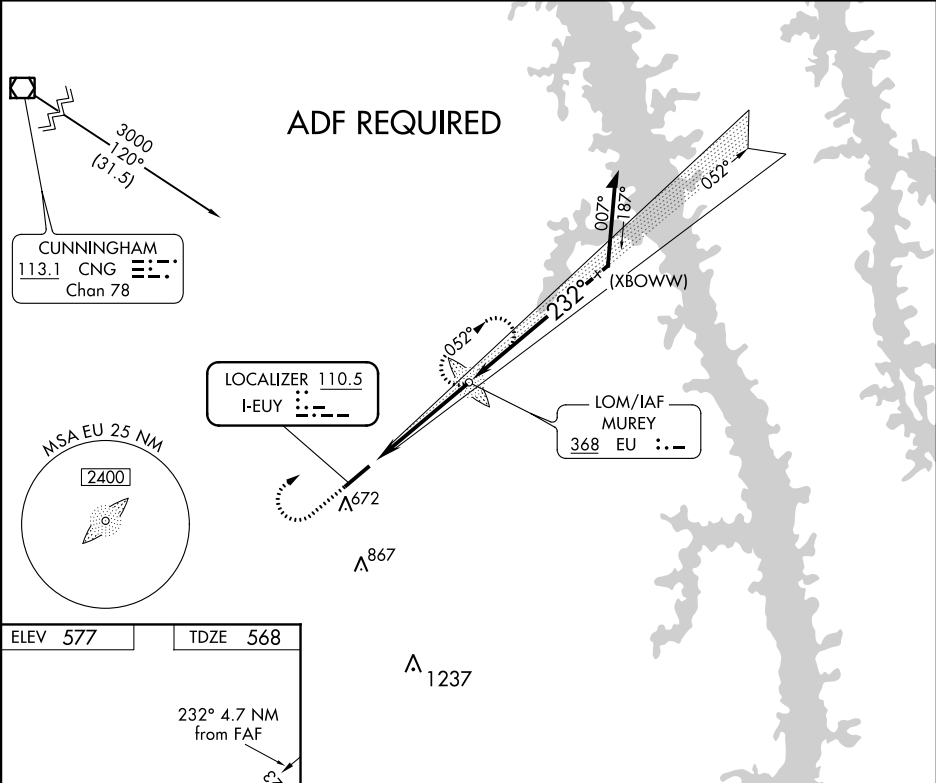
NA

Rwy 23 helicopter visibility reduction below ¾ SM NA. ADF required. When local alimeter setting not recieved use Mayfield alimeter setting: increase all MDA 40 feet and increase S-23 Cats C and D visibility ½ mile. For inop ODALS, increase S-23 Cats C and D visibility ¼ mile.

ODALS

MISSED APPROACH: Climb to 1200 then climbing right turn to 2100 direct MUREY LOM and hold.

AWOS-3 119.975	MEMPHIS CENTER 133.65 292.15	UNICOM 122.7 (CTAF) 1
--------------------------	--	---------------------------------



REIL Rwy 5

MIRL Rwy 5-23

FAF to MAP 4.7 NM

Knots	60	90	120	150	180
Min:Sec	4:42	3:08	2:21	1:53	1:34

1200

↑

2100

↷

EU

VGSI and descent angles not coincident (VGSI Angle 3.50/TCH 38).

2.99°

TCH 38

4.7 NM

EU LOM

052°

Remain within 10 NM

2200

232°

2100

CATEGORY	A	B	C	D
S-23	980-¾ 412 (500-¾)	980-1 412 (500-1)		
CIRCLING	1000-1 423 (500-1)	1040-1 463 (500-1)	1040-1½ 463 (500-1½)	1180-2 603 (700-2)