

Flight Procedures Cover Page	Task Action: FLIGHT CHECK	Task Type: IAP	Estimated Chart Date: 10/02/2025	APWS Task ID: FB770E4A2A7146A2B87239C271AA404A	APWS Project ID: 7E5E1651320046DBA836FB19214A0010
Procedure: RNAV (GPS) RWY 25 AMDT 0C		Enroute: NO	Specialist: Strobach, Ronald		Agreement Number:
Airport ID: 8D4			Airport City: SPARTA		State: MI
Facility ID:	Facility Type:	Flight Inspection Remark Type: New FC Slot			
<div>Procedure Comments:</div> <div>ACTIVE AIRNAV DATA USED FOR K8D4 AND RUNWAY.</div> <div>CANCELS T-NOTAM 5/1998.</div> <div>NEW CONTROLLING OBSTACLE: CIRCLING CAT A TREE (26-169237) 430701.17N/0854239.15W 954 MSL.</div> <div>NEW CONTROLLING OBSTACLE: CIRCLING CAT B TREE (26-169266) 430653.48N/0854319.46W 1006 MSL.</div> <div>CONTACT CASIMIR L. TABAKA, AJV-A432, 405-954-7931.</div> <div><div>QUALITY 21 CHECKED</div><div>QUALITY 38 CHECKED</div></div>					

FIPC BASIC FORM							
PROCEDURE: RNAV (GPS) RWY 25 AMDT 0C			AIRPORT NAME: PAUL C MILLER/SPARTA		AIRPORT ID: K8D4	SPECIAL CONTROL NO: BG-06-102-25	
FAC ID: K8D425		CITY: SPARTA			ST: MI	ORIG CHART DATE: 10/02/2025	
DFL TYPE: PROC/G	THIRD PARTY: <input type="checkbox"/> YES	EST. TIME ON SITE: 0.5	REIMB. NUMBER:		PTS TASK ID: FB770E4A2A7146A2B87239C271AA404A		
PREFLIGHT NOTES							
REVIEWER: scott wiebe					DATE: 07/15/2025		
COMMENTS:					CHECK ONE:		
					<input type="checkbox"/> FLT CK REQ <input checked="" type="checkbox"/> NFCR <input type="checkbox"/> REJECT		
							YES
					CPV COMPLETE?		X
PROCEDURE RESULTS							
INSPECTION DATE: 07/15/2025		CREW #: VN219	N #:	INSTRUMENT PROCEDURE STATUS: <input checked="" type="checkbox"/> SAT <input type="checkbox"/> SAT W/CHANGES <input type="checkbox"/> UNSAT		ARINC CODING: <input type="checkbox"/> SAT <input type="checkbox"/> SAT/GOLD <input type="checkbox"/> UNSAT	
FLIGHT INSPECTOR SIGNATURE: scott wiebe @ 07/15/2025 16:38			PRINTED NAME: WIEBE, GREGORY SCOTT				NOTAM INITIATED? <input type="checkbox"/> YES <input checked="" type="checkbox"/> NO
FLIGHT INSPECTOR REMARKS: NFCR per TFIG #163. PA flown, N81, same date, on existing/active approach (no change FAF-MAP) Did not fly amended approach since coding was not available using J8D4 pseudo-ident.							
IN-FLIGHT OBSTACLE REPORT							
OBSTRUCTION ID #:	COORDINATES OR LOCATION:		GNSS ALTITUDE (MSL):		BAROMETRIC ALTITUDE (MSL):		HEIGHT ABOVE GROUND LEVEL:

APP CRS
247°

Rwy Idg	4033
TDZE	764
Apt Elev	775

RNAV (GPS) RWY 25

PAUL C MILLER/SPARTA (8D4)

RNP APCH.

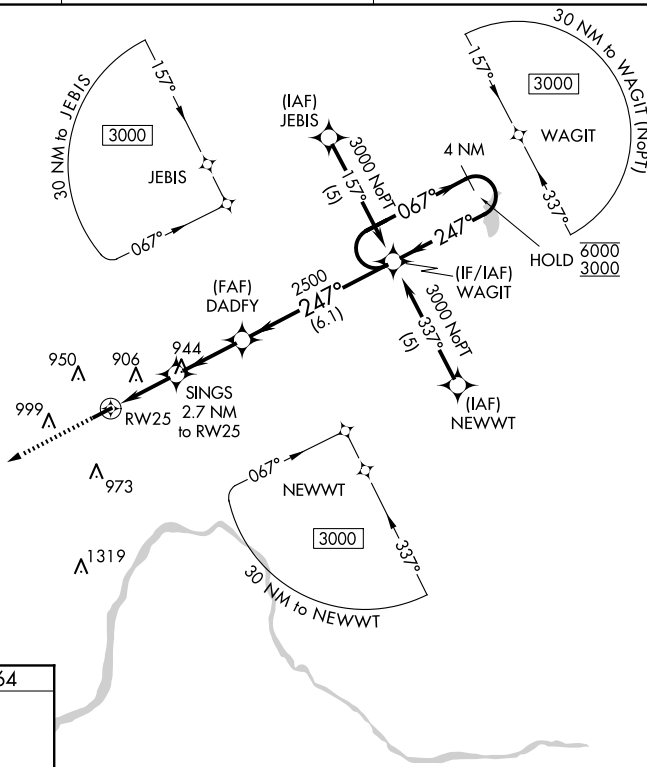
T Rwy 25 helicopter visibility reduction below $\frac{3}{4}$ SM NA. When local altimeter setting not received, use Grand Rapids altimeter setting. VDP NA when using Grand Rapids altimeter setting.

MISSED APPROACH:
Climb to 3000 direct
HUUNT and hold.

AWOS-3PT
126.65

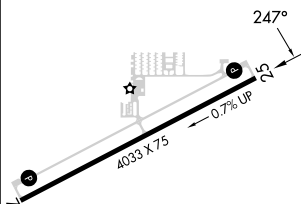
GREAT LAKES APP CON ★
124.6 257.6

UNICOM
122.8 (CTAF) **L**



ELEV 775

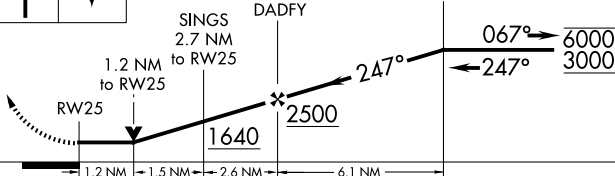
TDZE 764



3000

HUU

Visual Segment - Obstacles.

4 NM
Holding Pattern

CATEGORY

A

D

INAV MD.

1240-1

(500-1)

NA

CIRCLING

1300-1

1340-1

NA

MIRL Rwy 7-25 **L**

REIL Rwy 7 and 25 (L)

SPARTA, MICHIGAN

Orig-B 31 DEC20

PAUL C MILLER/SPARTA (8D4)

43°08'N-85°41'W

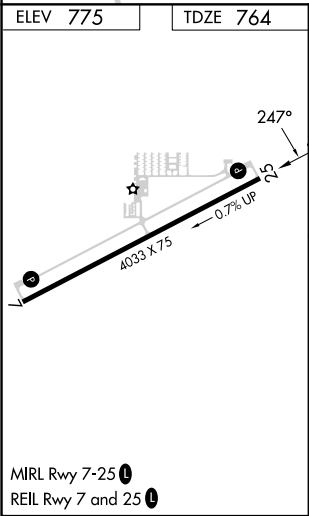
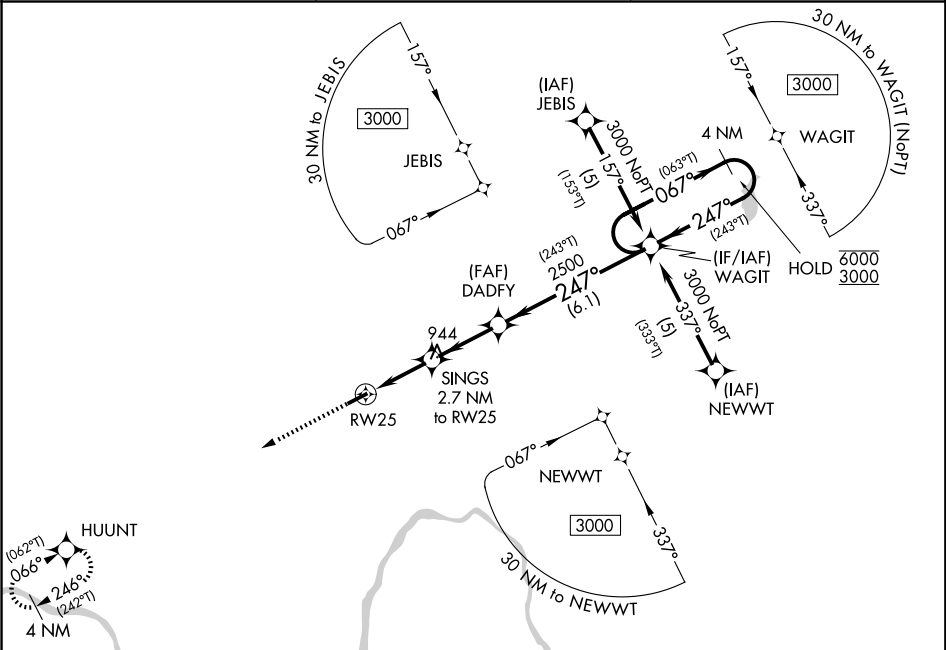
RNAV (GPS) RWY 25

APP CRS	Rwy Ldg	4033
247°	TDZE	764
	Apt Elev	775

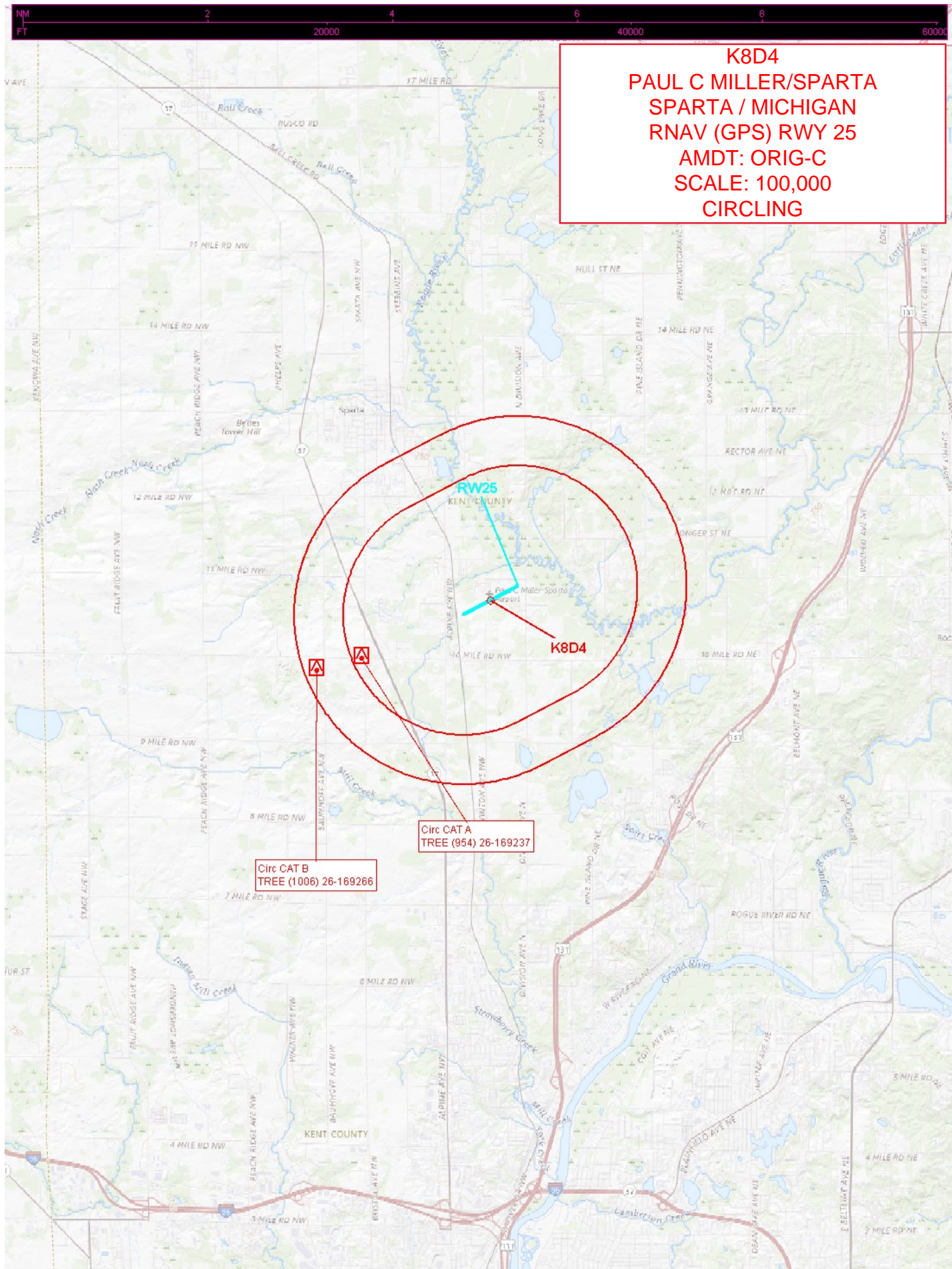
RNAV (GPS) RWY 25
PAUL C MILLER/SPARTA (8D4)

RNP APCH - GPS.	<p>⚠ Rwy 25 helicopter visibility reduction below ¾ SM NA. Circling Rwy 7 NA at night. VDP NA when using GRR altimeter setting. When local altimeter setting not received, use GRR altimeter setting and increase Circling Cat B MDA 20 feet.</p>	MISSED APPROACH: Climb to 3000 direct HUUNT and hold.
-----------------	--	--

AWOS-3PT 126.65	GREAT LAKES APP CON ★ 124.6 257.6	UNICOM 122.8 (CTAF) 0
--------------------	--------------------------------------	--------------------------



PROTOTYPE- NOT FOR NAVIGATION				
Visual Segment - Obstacles.				
<p>3000 HUUNT 4 NM Holding Pattern</p> <p>SINGS 2.7 NM to RW25 DADFY WAGIT</p> <p>1.2 NM to RW25 1.5 NM 2.7 NM 6.1 NM</p> <p>1640 2500</p> <p>247° (063°T) 067° 6000 3000</p> <p>247° (243°T)</p>				
CATEGORY	A	B	C	D
LNAV MDA	1240-1	476 (500-1)	NA	
CIRCLING	1300-1 525 (600-1)	1340-1 565 (600-1)	NA	



K8D4
PAUL C MILLER/SPARTA
SPARTA / MICHIGAN
RNAV (GPS) RWY 25
AMDT: ORIG-C
SCALE: 100,000
CIRCLING

Circ CAT A
TREE (954) 26-169237

Circ CAT B
TREE (1006) 26-169266