

DME DME Assessment Results for KLGA1 path ALB_TRESA

Results Summary

Flyability:	Completed
DME/DME:	Completed - No Critical DMEs
Name:	David C-CTR Cook
Project File:	C:\Users\David C-CTR Cook\Documents\TARGETS WORK\DME-DME WORK\11-27-2025 PUB\KLGA NOBB1 (RNAV) STAR\KLGA NOBB1 (RNAV) STAR DME DME_20240724.tgs
Output File:	C:\Users\David C-CTR Cook\Documents\TARGETS WORK\DME-DME WORK\11-27-2025 PUB\KLGA NOBB1 (RNAV) STAR\KDXR [IFPA] KLGA1 20240724_1459 EDT\ALB_TRESA\KDXR KLGA1 RNAV STAR ALB TRESA 20240724_1459 EDT.pdf
Procedure Name:	KLGA1
Software: DmeDmePlugin:	7.3.3
Date/Time:	07/24/2024 14:59 EDT
Databases:	MITRE 3DEP 3 arcsec

Failures

No Failures

Warnings

No Warnings

Informational

No Informational

Notes For Flight Check

None

Flight Plan

Name	Type	Lat/Lon	Altitude (ft)	VNAV Mode	Ground Speed (kts)	Turn Type	Leg Type
ALB	WP	N42° 44' 50.2097", W073° 48' 11.4623"	8000	VNAV	200	FLY_BY	TF
WIGAN	WP	N42° 05' 06.3300", W073° 48' 53.8900"	8000	VNAV	200	FLY_BY	TF
TRESA	WP	N41° 52' 49.6100", W073° 49' 06.8000"	8000	VNAV	200	FLY_BY	TF

Flyability

Flight Type:	RNAV_STAR
Selected Airport:	KDXR [IFPA]
Climb Gradient:	None assigned
Speeds:	200 Ground Speed to 11000 FT
	240 Ground Speed to 18000 FT
	260 Ground Speed to 24000 FT
	340 Ground Speed above 24000 FT
Descent During a Turn:	Allowed
VNAV Mode:	Flight Plan

DME DME Assessment Results for KLGA1 path ALB_TRESA

DME/DME	
RNP:	RNP 2
Flight Mode:	Manual
Line of Sight (DTED Level 0 Max):	Evaluated
Inertial Drift:	Enabled
Initial Drift:	0.558 NM
INS Drift Rate:	8.0 NM/Hour
Range Mode:	OSV
RNP Edges:	Evaluated
Min DME Range:	3.0 NM
DME Types:	DME, VOR-DME, VORTAC, TACAN
DME Include Angles:	30 to 150
Critical DMEs:	Not Allowed
DoD Facilities:	Not included
Foreign Facilities:	Not included
High DMEs:	Included
Low DMEs:	Included
Terminal DMEs:	Included
Flight Check DMEs:	Not selected
Higher Altitudes:	Not Evaluated
Near Maximum Altitude:	Not Evaluated
Automatic ESVs:	Enabled
Disabled DMEs:	None

DME/DME (Continued)										
DMEs Used										
#	Name	Lat/Lon	MAGVAR	Range	Type	Source	Critical	Status	Time	Distance
1	CTR	N42° 17' 28.7470", W072° 56' 57.8190"	13.0 W	40	L	IFPA	NO	Enabled		
2	HUO	N41° 24' 34.8718", W074° 35' 29.7393"	11.0 W	130	H	IFPA	NO	Enabled		
3	ALB	N42° 44' 50.2097", W073° 48' 11.4623"	13.0 W	40	L	IFPA	NO	Enabled		
4	SAX	N41° 04' 03.1486", W074° 32' 17.9094"	11.0 W	130	H	IFPA	NO	Enabled		
5	GDM	N42° 32' 45.3150", W072° 03' 29.4776"	14.0 W	40	L	IFPA	NO	Enabled		
6	MAD	N41° 18' 49.9000", W072° 41' 31.9300"	13.0 W	40	L	IFPA	NO	Enabled		
7	IGN	N41° 39' 55.6258", W073° 49' 20.0613"	12.0 W	40	L	IFPA	NO	Enabled		
8	HFD	N41° 38' 27.9769", W072° 32' 50.7048"	13.0 W	40	L	IFPA	NO	Enabled		
9	PWL	N41° 46' 11.1770", W073° 36' 01.9850"	12.0 W	40	L	IFPA	NO	Enabled		
10	CAM	N42° 59' 39.4398", W073° 20' 38.4681"	14.0 W	40	L	IFPA	NO	Enabled		
11	CMK	N41° 16' 48.3219", W073° 34' 52.7751"	12.0 W	40	L	IFPA	NO	Enabled		

DME DME Assessment Results for KLGA1 path ALB_TRESA

Flight Check DME Selection						
Distance [NM]	Selected DMEs					Alternate
0.0	HFD [IFPA]	CAM [IFPA]	GDM [IFPA]			
3.0	GDM [IFPA]	ALB [IFPA]	HFD [IFPA]	CAM [IFPA]		
17.9	ALB [IFPA]	CTR [IFPA]	CAM [IFPA]			
18.8	CAM [IFPA]	HFD [IFPA]	ALB [IFPA]			
20.4	CAM [IFPA]	HFD [IFPA]	MAD [IFPA]	ALB [IFPA]		
21.0	CAM [IFPA]	HFD [IFPA]	MAD [IFPA]	ALB [IFPA]	PWL [IFPA]	
28.7	HUO [IFPA]	HFD [IFPA]	CAM [IFPA]	ALB [IFPA]	IGN [IFPA]	PWL [IFPA]
39.8	CAM [IFPA]	HFD [IFPA]	HUO [IFPA]	PWL [IFPA]	IGN [IFPA]	
45.3	HUO [IFPA]	PWL [IFPA]	HFD [IFPA]	IGN [IFPA]		
48.1	HUO [IFPA]	PWL [IFPA]	SAX [IFPA]	HFD [IFPA]	IGN [IFPA]	

Inertial Drift Segments			
#	Start Location	End Location	Length [NM]

Available DMEs by Waypoints			
Waypoint Before	Waypoint After	DME List	Suggested DMEs
ALB	WIGAN	CTR [IFPA], HUO [IFPA], ALB [IFPA], GDM [IFPA], MAD [IFPA], IGN [IFPA], HFD [IFPA], PWL [IFPA], CAM [IFPA]	
WIGAN	TRESA	HUO [IFPA], ALB [IFPA], SAX [IFPA], IGN [IFPA], HFD [IFPA], PWL [IFPA], CAM [IFPA], CMK [IFPA]	

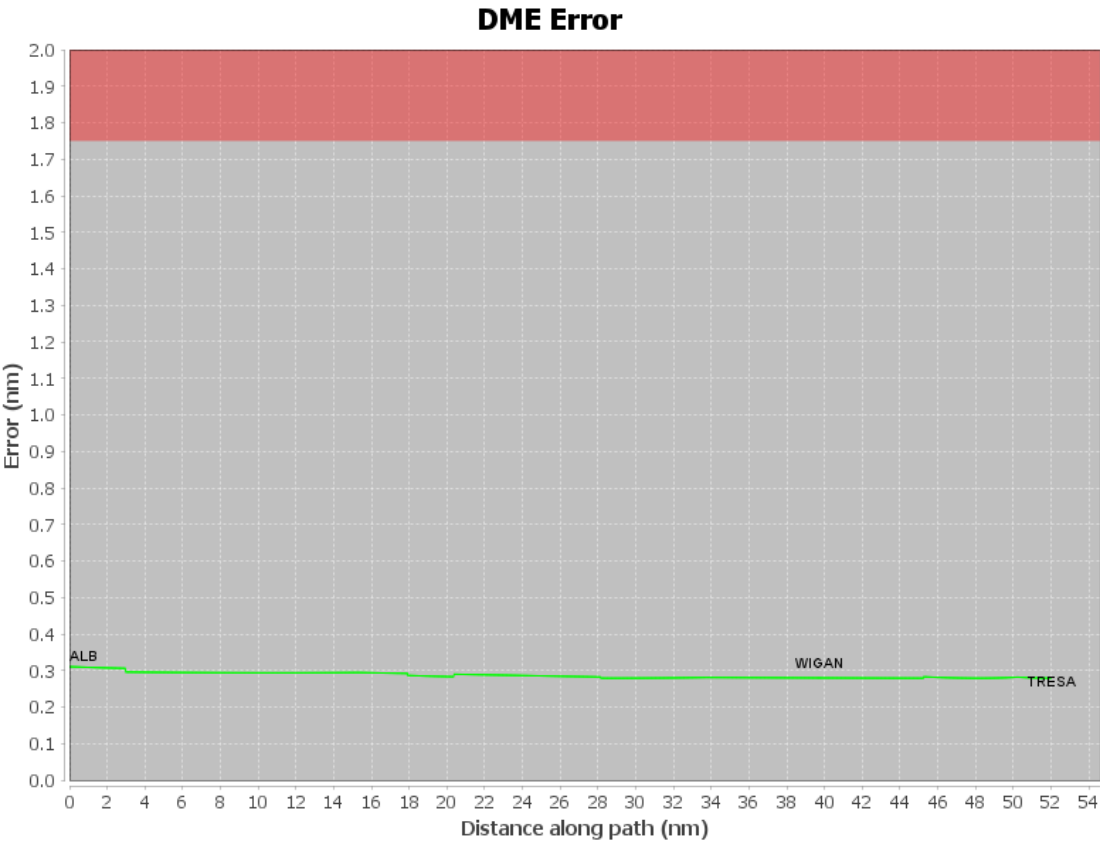
DME DME Assessment Results for KLGA1 path ALB_TRESA

User Data Files

#	File Name
1	New Analysis.udt
2	UserDMEsKHPN [IFPA] VALRE1 RNAV STAR_20240724_0747 EDT.udt
3	UserDMEsKLGA [IFPA] VADDR1 RNAV STAR_20240723_1047 EDT.udt

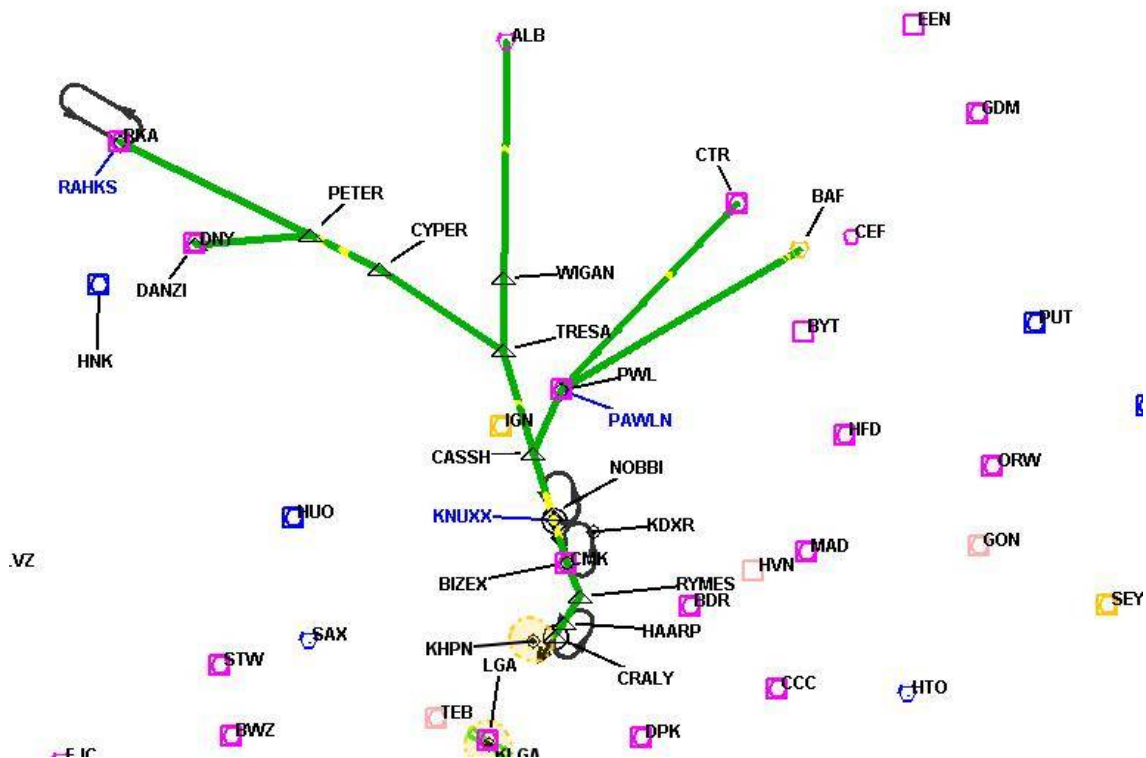
User DMEs

#	Name	Lat/Lon	MAGVAR	Range	Elevation [ft]	Frequency	Replaces	Status
1	UDT ESV CAM CAM [IFPA]	N42° 59' 39.4398", W073° 20' 38.4681"	14.0 W	40	1490	115.0	UDT ESV CAM	
ESV:		Bearing [True]: 186.0° to 236.0° Bearing [Mag]: 200.0° to 250.0°				Arc Distance: Out to 65.0 NM Altitude: 4900.0 to 18000.0 ft		
2	UDT ESV GDM GDM [IFPA]	N42° 32' 45.3150", W072° 03' 29.4776"	14.0 W	40	1279.6	116.95	UDT ESV GDM	
ESV:		Bearing [True]: 266.0° to 281.0° Bearing [Mag]: 280.0° to 295.0°				Arc Distance: Out to 83.0 NM Altitude: 7900.0 to 19300.0 ft		
3	ETX [IFPA] ETX [IFPA]	N40° 34' 51.7405", W075° 41' 02.5085"	9.0 W	40	741.7	110.2	ETX [IFPA]	
ESV:		Bearing [True]: 17.0° to 22.0° Bearing [Mag]: 26.0° to 31.0°				Arc Distance: Out to 106.0 NM Altitude: 8700.0 to 18800.0 ft		
4	UDT ESV SAX SAX [IFPA]	N41° 04' 03.1486", W074° 32' 17.9094"	11.0 W	130	1399.5	115.7	UDT ESV SAX	
ESV:		Bearing [True]: 24.0° to 67.0° Bearing [Mag]: 35.0° to 78.0°				Arc Distance: Out to 64.0 NM Altitude: 4500.0 to 12500.0 ft		
5	UDT ESV HUO HUO [IFPA]	N41° 24' 34.8718", W074° 35' 29.7393"	11.0 W	130	1300.3	116.1	UDT ESV HUO	
ESV:		Bearing [True]: 359.0° to 69.0° Bearing [Mag]: 10.0° to 80.0°				Arc Distance: Out to 65.0 NM Altitude: 6900.0 to 15900.0 ft		
6	UDT ESV MAD MAD [IFPA]	N41° 18' 49.9000", W072° 41' 31.9300"	13.0 W	40	216.3	110.4	UDT ESV MAD	
ESV:		Bearing [True]: 317.0° to 7.0° Bearing [Mag]: 330.0° to 20.0°				Arc Distance: Out to 85.0 NM Altitude: 7000.0 to 18000.0 ft		
7	UDT ESV CCC CCC [IFPA]	N40° 55' 46.6278", W072° 47' 55.8897"	13.0 W	130	84.7	114.55	UDT ESV CCC	
ESV:		Bearing [True]: 317.0° to 7.0° Bearing [Mag]: 330.0° to 20.0°				Arc Distance: Out to 75.0 NM Altitude: 4900.0 to 14600.0 ft		
8	UDT ESV HFD HFD [IFPA]	N41° 38' 27.9769", W072° 32' 50.7048"	13.0 W	40	849.1	114.9	UDT ESV HFD	
ESV:		Bearing [True]: 277.0° to 323.0° Bearing [Mag]: 290.0° to 336.0°				Arc Distance: Out to 95.0 NM Altitude: 6900.0 to 18000.0 ft		



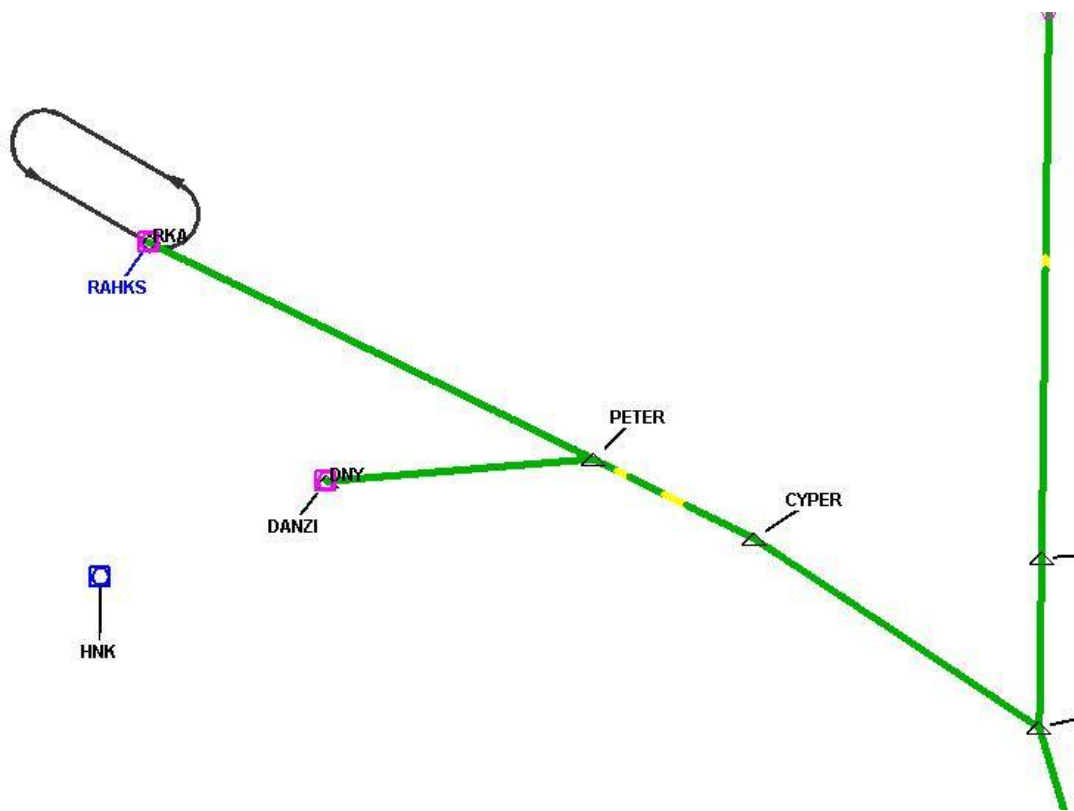
DME DME Assessment Results for KLGA1 path ALB_TRESA

Graphic Depiction 1



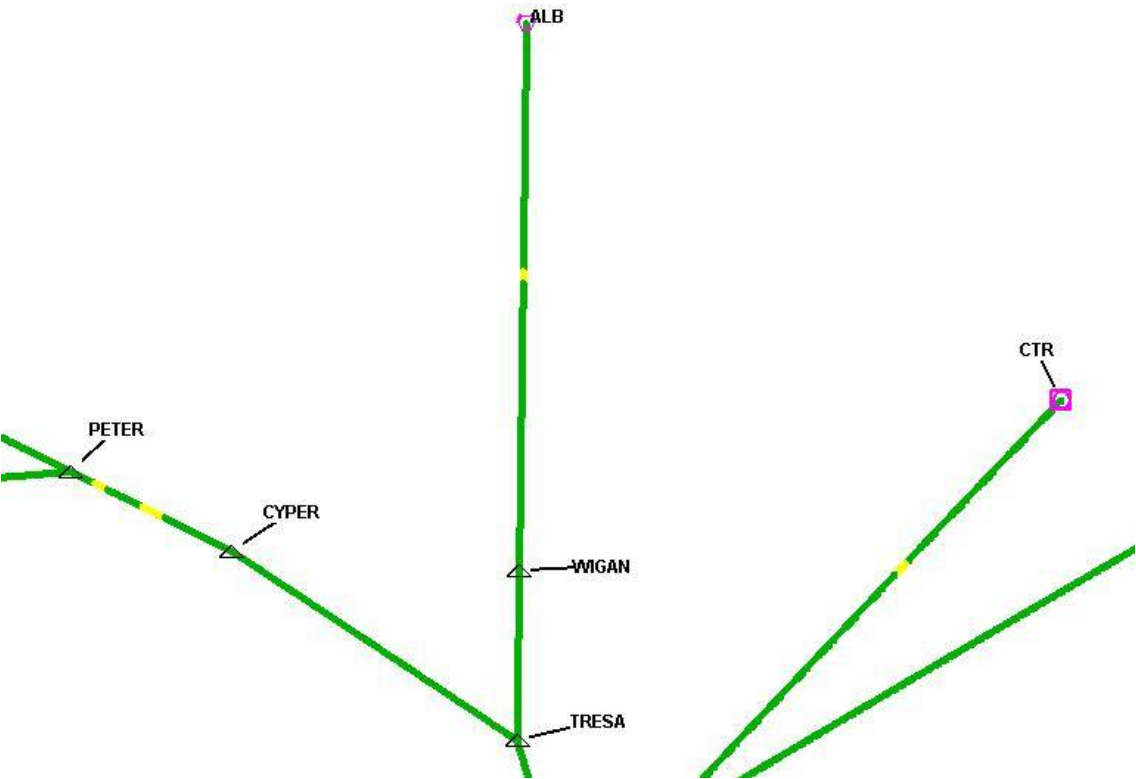
DME DME Assessment Results for KLGA1 path ALB_TRESA

Graphic Depiction 2



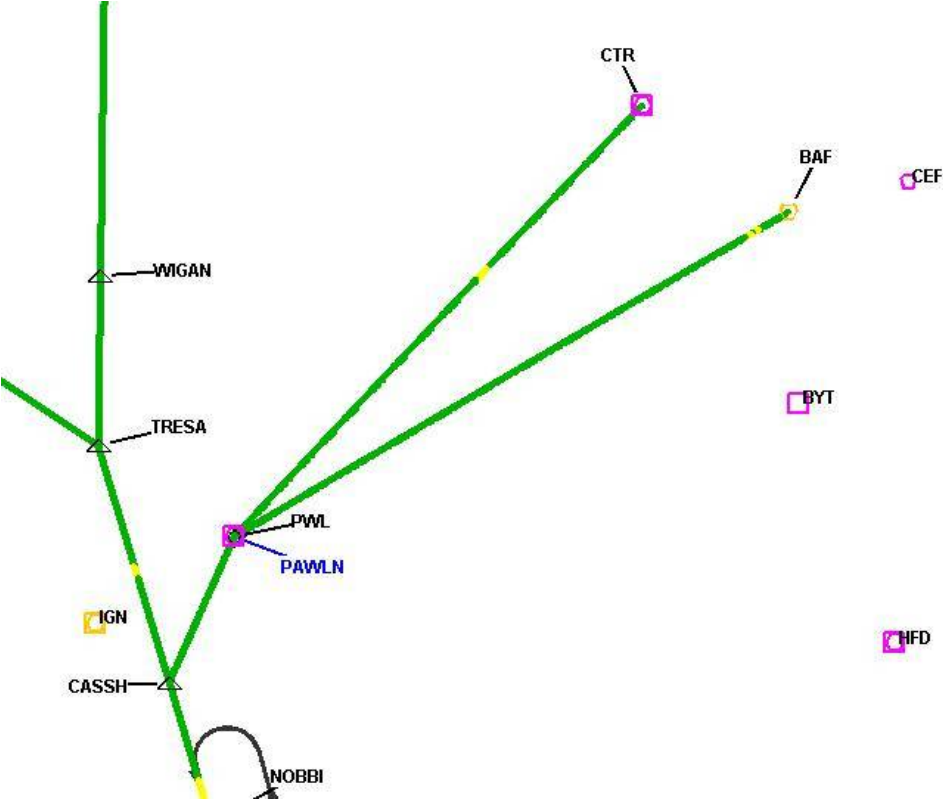
DME DME Assessment Results for KLGA1 path ALB_TRESA

Graphic Depiction 3



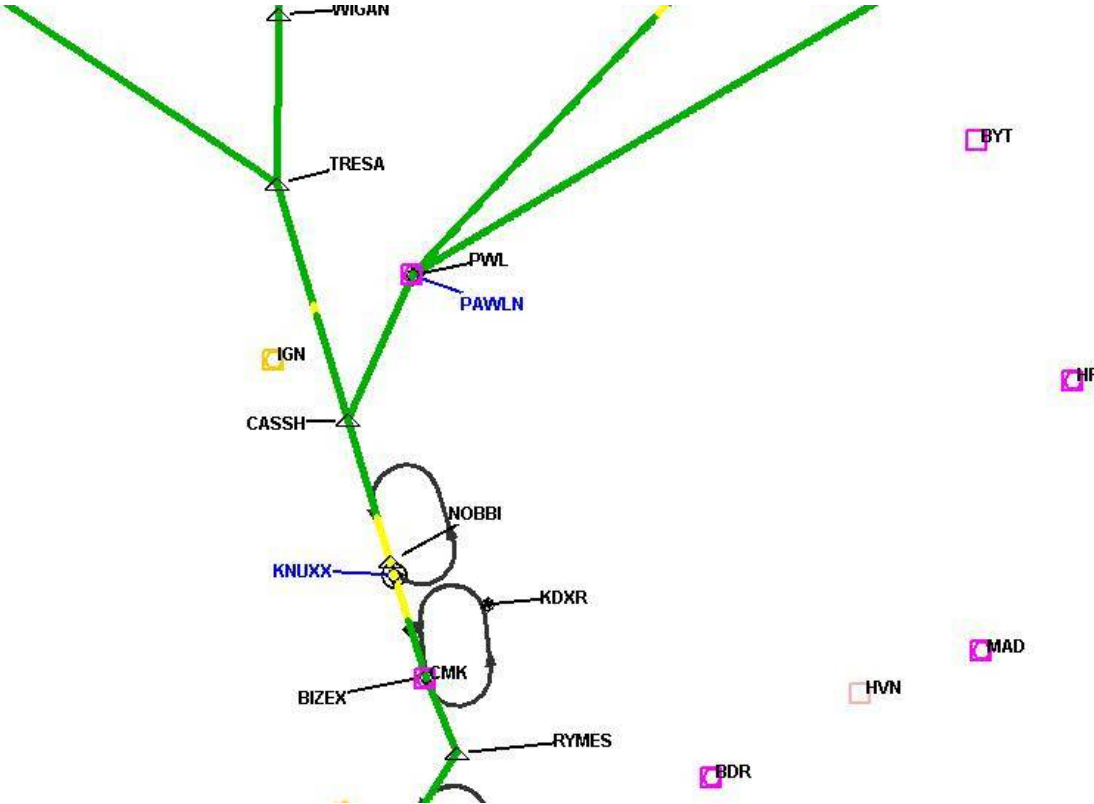
DME DME Assessment Results for KLGA1 path ALB_TRESA

Graphic Depiction 4



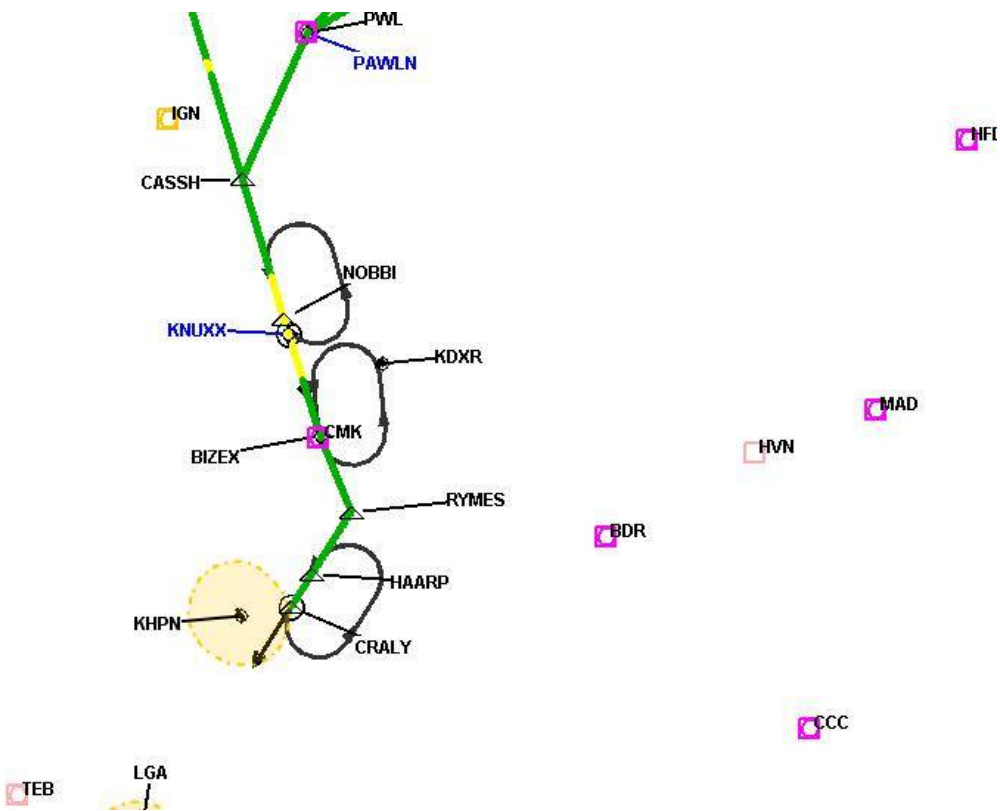
DME DME Assessment Results for KLGA1 path ALB_TRESA

Graphic Depiction 5



DME DME Assessment Results for KLGA1 path ALB_TRESA

Graphic Depiction 6



DME DME Assessment Results for KLGA1 path BAF_CASSH

Results Summary	
Flyability:	Completed
DME/DME:	Completed - No Critical DMEs
Name:	David C-CTR Cook
Project File:	C:\Users\David C-CTR Cook\Documents\TARGETS WORK\DME-DME WORK\11-27-2025 PUB\KLGA NOBB1 (RNAV) STAR\KLGA NOBB1 (RNAV) STAR DME DME_20240724.tgs
Output File:	C:\Users\David C-CTR Cook\Documents\TARGETS WORK\DME-DME WORK\11-27-2025 PUB\KLGA NOBB1 (RNAV) STAR\KDXR [IFPA] KLGA1 20240724_1459 EDT\BAF_CASSH\KDXR KLGA1 RNAV STAR BAF CASSH 20240724_1459 EDT.pdf
Procedure Name:	KLGA1
Software: DmeDmePlugin:	7.3.3
Date/Time:	07/24/2024 14:59 EDT
Databases:	MITRE 3DEP 3 arcsec

Failures
No Failures

Warnings
No Warnings

Informational
No Informational

Notes For Flight Check
None

Flight Plan							
Name	Type	Lat/Lon	Altitude (ft)	VNAV Mode	Ground Speed (kts)	Turn Type	Leg Type
BAF	WP	N42° 09' 43.0527", W072° 42' 58.3182"	5000	VNAV	200	FLY_BY	TF
PAWLN	WP	N41° 46' 11.5100", W073° 36' 02.6400"	5000	VNAV	200	FLY_BY	TF
CASSH	WP	N41° 35' 38.1600", W073° 42' 17.0700"	5000	VNAV	200	FLY_BY	TF

Flyability	
Flight Type:	RNAV_STAR
Selected Airport:	KDXR [IFPA]
Climb Gradient:	None assigned
Speeds:	200 Ground Speed to 11000 FT
	240 Ground Speed to 18000 FT
	260 Ground Speed to 24000 FT
	340 Ground Speed above 24000 FT
Descent During a Turn:	Allowed
VNAV Mode:	Flight Plan

DME DME Assessment Results for KLGA1 path BAF_CASSH

DME/DME	
RNP:	RNP 2
Flight Mode:	Manual
Line of Sight (DTED Level 0 Max):	Evaluated
Inertial Drift:	Enabled
Initial Drift:	0.558 NM
INS Drift Rate:	8.0 NM/Hour
Range Mode:	OSV
RNP Edges:	Evaluated
Min DME Range:	3.0 NM
DME Types:	DME, VOR-DME, VORTAC, TACAN
DME Include Angles:	30 to 150
Critical DMEs:	Not Allowed
DoD Facilities:	Not included
Foreign Facilities:	Not included
High DMEs:	Included
Low DMEs:	Included
Terminal DMEs:	Included
Flight Check DMEs:	Not selected
Higher Altitudes:	Not Evaluated
Near Maximum Altitude:	Not Evaluated
Automatic ESVs:	Enabled
Disabled DMEs:	None

DME/DME (Continued)										
DMEs Used										
#	Name	Lat/Lon	MAGVAR	Range	Type	Source	Critical	Status	Time	Distance
1	PVD	N41° 43' 27.6334", W071° 25' 46.7078"	14.0 W	130	DH	IFPA	NO	Enabled		
2	CTR	N42° 17' 28.7470", W072° 56' 57.8190"	13.0 W	40	L	IFPA	NO	Enabled		
3	CEF	N42° 11' 51.1596", W072° 31' 34.7338"	14.0 W	40	L	IFPA	NO	Enabled		
4	BYT	N41° 55' 50.0220", W072° 41' 59.5420"	0.0 E	40	L	IFPA	NO	Enabled		
5	CCC	N40° 55' 46.6278", W072° 47' 55.8897"	13.0 W	130	H	IFPA	NO	Enabled		
6	SAX	N41° 04' 03.1486", W074° 32' 17.9094"	11.0 W	130	H	IFPA	NO	Enabled		
7	GDM	N42° 32' 45.3150", W072° 03' 29.4776"	14.0 W	40	L	IFPA	NO	Enabled		
8	IGN	N41° 39' 55.6258", W073° 49' 20.0613"	12.0 W	40	L	IFPA	NO	Enabled		
9	HFD	N41° 38' 27.9769", W072° 32' 50.7048"	13.0 W	40	L	IFPA	NO	Enabled		
10	BAF	N42° 09' 43.0527", W072° 42' 58.3182"	14.0 W	40	L	IFPA	NO	Enabled		
11	PWL	N41° 46' 11.1770", W073° 36' 01.9850"	12.0 W	40	L	IFPA	NO	Enabled		
12	CMK	N41° 16' 48.3219", W073° 34' 52.7751"	12.0 W	40	L	IFPA	NO	Enabled		

DME DME Assessment Results for KLGA1 path BAF_CASSH

Flight Check DME Selection						
Distance [NM]	Selected DMEs					Alternate
0.0	CEF [IFPA]	HFD [IFPA]	BYT [IFPA]	GDM [IFPA]	CTR [IFPA]	PVD [IFPA]
1.3	CEF [IFPA]	HFD [IFPA]	BYT [IFPA]	GDM [IFPA]	CTR [IFPA]	
2.2	CEF [IFPA]	HFD [IFPA]	BYT [IFPA]	CTR [IFPA]		
2.4	CEF [IFPA]	HFD [IFPA]	GDM [IFPA]	CTR [IFPA]	BYT [IFPA]	PVD [IFPA]
2.9	CEF [IFPA]	HFD [IFPA]	BYT [IFPA]	CTR [IFPA]		
3.1	CEF [IFPA]	HFD [IFPA]	BYT [IFPA]	BAF [IFPA]	CTR [IFPA]	PVD [IFPA]
3.5	CEF [IFPA]	HFD [IFPA]	BYT [IFPA]	BAF [IFPA]	CTR [IFPA]	
29.2	CCC [IFPA]	CEF [IFPA]	BAF [IFPA]	PWL [IFPA]	IGN [IFPA]	BYT [IFPA]
31.2	CCC [IFPA]	BAF [IFPA]	PWL [IFPA]	IGN [IFPA]	BYT [IFPA]	CTR [IFPA]
33.4	CCC [IFPA]	PWL [IFPA]	IGN [IFPA]	BYT [IFPA]	CTR [IFPA]	
33.6	BYT [IFPA]	CMK [IFPA]	CTR [IFPA]	IGN [IFPA]		
37.8	CCC [IFPA]	PWL [IFPA]	IGN [IFPA]	CTR [IFPA]	CMK [IFPA]	
41.8	CCC [IFPA]	IGN [IFPA]	PWL [IFPA]	CMK [IFPA]		
42.6	CCC [IFPA]	IGN [IFPA]	PWL [IFPA]	SAX [IFPA]	CMK [IFPA]	
43.0	CCC [IFPA]	IGN [IFPA]	SAX [IFPA]	CMK [IFPA]		
49.1	SAX [IFPA]	CCC [IFPA]	IGN [IFPA]	CMK [IFPA]	PWL [IFPA]	
49.3	SAX [IFPA]	CCC [IFPA]	IGN [IFPA]	CMK [IFPA]		
52.3	SAX [IFPA]	CCC [IFPA]	IGN [IFPA]	CMK [IFPA]	PWL [IFPA]	
53.2	IGN [IFPA]	CMK [IFPA]	SAX [IFPA]			
54.1	IGN [IFPA]	PWL [IFPA]	CMK [IFPA]	SAX [IFPA]		
54.3	SAX [IFPA]	CMK [IFPA]				
57.4	SAX [IFPA]	IGN [IFPA]	PWL [IFPA]	CMK [IFPA]		

Inertial Drift Segments			
#	Start Location	End Location	Length [NM]

Available DMEs by Waypoints			
Waypoint Before	Waypoint After	DME List	Suggested DMEs
BAF	PAWLN	PVD [IFPA], CTR [IFPA], CEF [IFPA], BYT [IFPA], CCC [IFPA], SAX [IFPA], GDM [IFPA], IGN [IFPA], HFD [IFPA], BAF [IFPA], PWL [IFPA], CMK [IFPA]	
PAWLN	CASSH	SAX [IFPA], CCC [IFPA], IGN [IFPA], PWL [IFPA], CMK [IFPA]	

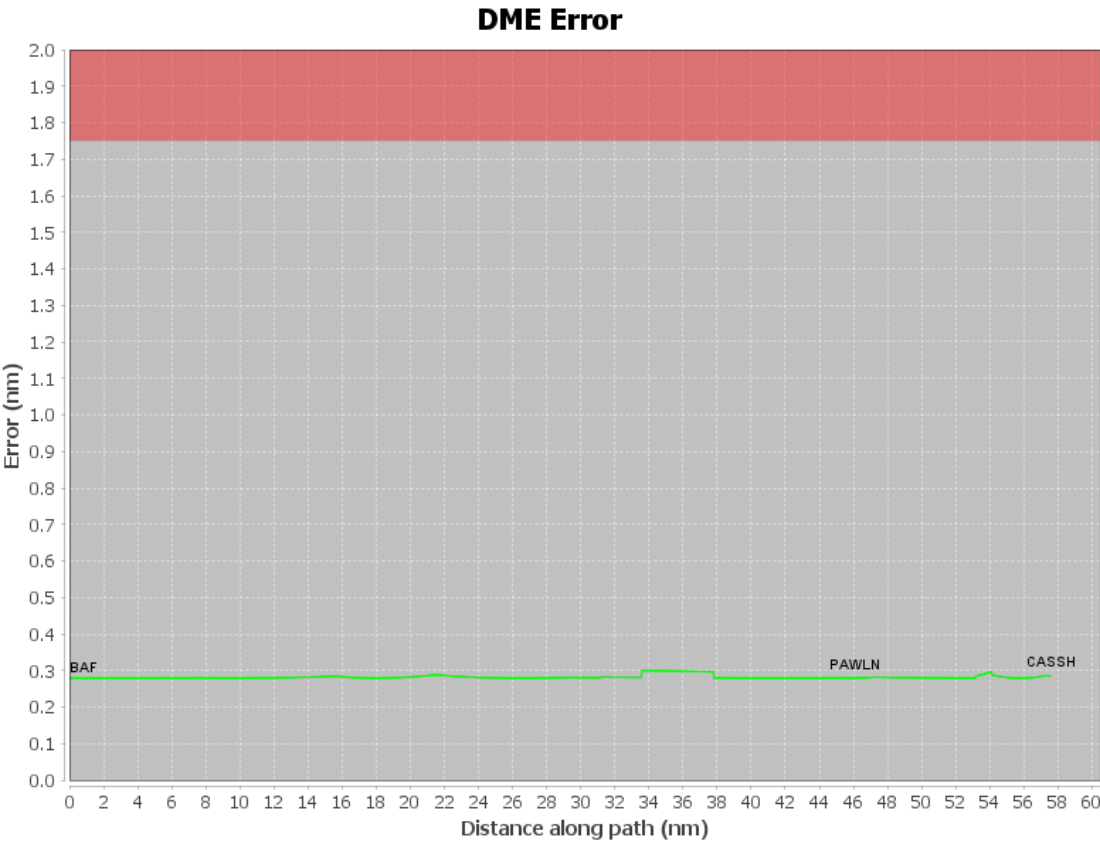
DME DME Assessment Results for KLGA1 path BAF_CASSH

User Data Files

#	File Name
1	New Analysis.udt
2	UserDMESKHPN [IFPA] VALRE1 RNAV STAR_20240724_0747 EDT.udt
3	UserDMESKLGA [IFPA] VADDR1 RNAV STAR_20240723_1047 EDT.udt

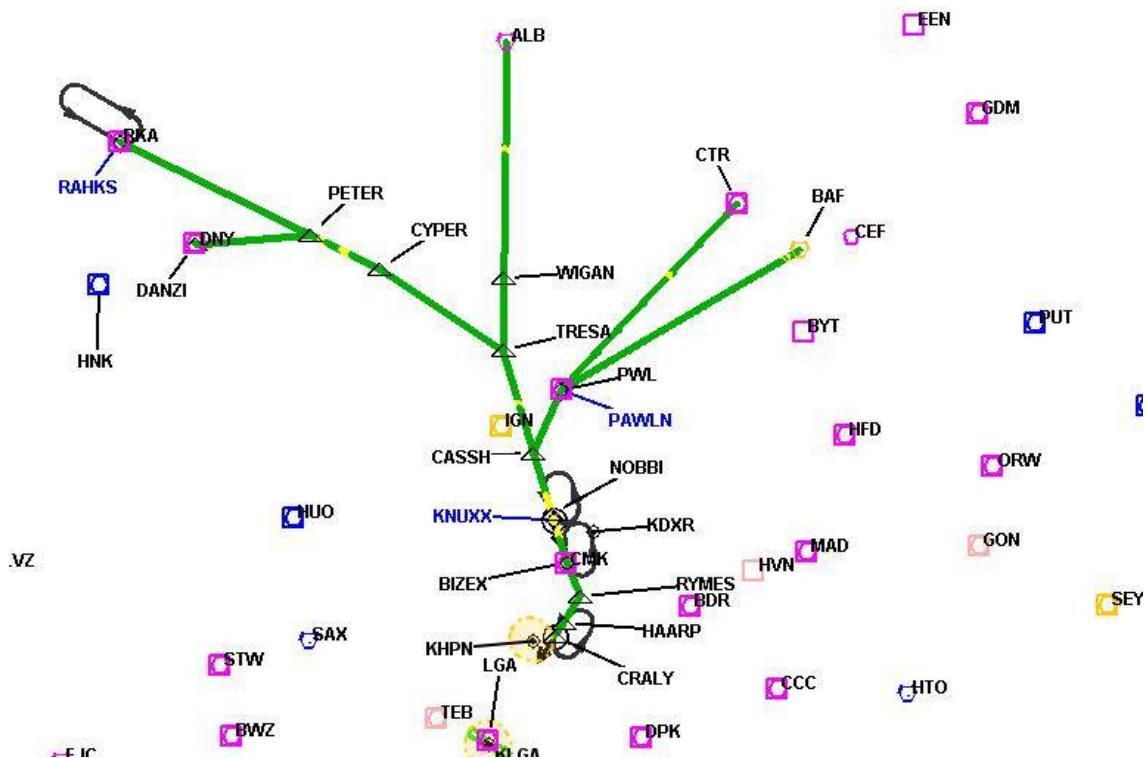
User DMEs

#	Name	Lat/Lon	MAGVAR	Range	Elevation [ft]	Frequency	Replaces	Status
1	UDT ESV CAM CAM [IFPA]	N42° 59' 39.4398", W073° 20' 38.4681"	14.0 W	40	1490	115.0	UDT ESV CAM	
ESV:		Bearing [True]: 186.0° to 236.0° Bearing [Mag]: 200.0° to 250.0°				Arc Distance: Out to 65.0 NM Altitude: 4900.0 to 18000.0 ft		
2	UDT ESV GDM GDM [IFPA]	N42° 32' 45.3150", W072° 03' 29.4776"	14.0 W	40	1279.6	116.95	UDT ESV GDM	
ESV:		Bearing [True]: 266.0° to 281.0° Bearing [Mag]: 280.0° to 295.0°				Arc Distance: Out to 83.0 NM Altitude: 7900.0 to 19300.0 ft		
3	ETX [IFPA] ETX [IFPA]	N40° 34' 51.7405", W075° 41' 02.5085"	9.0 W	40	741.7	110.2	ETX [IFPA]	
ESV:		Bearing [True]: 17.0° to 22.0° Bearing [Mag]: 26.0° to 31.0°				Arc Distance: Out to 106.0 NM Altitude: 8700.0 to 18800.0 ft		
4	UDT ESV SAX SAX [IFPA]	N41° 04' 03.1486", W074° 32' 17.9094"	11.0 W	130	1399.5	115.7	UDT ESV SAX	
ESV:		Bearing [True]: 24.0° to 67.0° Bearing [Mag]: 35.0° to 78.0°				Arc Distance: Out to 64.0 NM Altitude: 4500.0 to 12500.0 ft		
5	UDT ESV HUO HUO [IFPA]	N41° 24' 34.8718", W074° 35' 29.7393"	11.0 W	130	1300.3	116.1	UDT ESV HUO	
ESV:		Bearing [True]: 359.0° to 69.0° Bearing [Mag]: 10.0° to 80.0°				Arc Distance: Out to 65.0 NM Altitude: 6900.0 to 15900.0 ft		
6	UDT ESV MAD MAD [IFPA]	N41° 18' 49.9000", W072° 41' 31.9300"	13.0 W	40	216.3	110.4	UDT ESV MAD	
ESV:		Bearing [True]: 317.0° to 7.0° Bearing [Mag]: 330.0° to 20.0°				Arc Distance: Out to 85.0 NM Altitude: 7000.0 to 18000.0 ft		
7	UDT ESV CCC CCC [IFPA]	N40° 55' 46.6278", W072° 47' 55.8897"	13.0 W	130	84.7	114.55	UDT ESV CCC	
ESV:		Bearing [True]: 317.0° to 7.0° Bearing [Mag]: 330.0° to 20.0°				Arc Distance: Out to 75.0 NM Altitude: 4900.0 to 14600.0 ft		
8	UDT ESV HFD HFD [IFPA]	N41° 38' 27.9769", W072° 32' 50.7048"	13.0 W	40	849.1	114.9	UDT ESV HFD	
ESV:		Bearing [True]: 277.0° to 323.0° Bearing [Mag]: 290.0° to 336.0°				Arc Distance: Out to 95.0 NM Altitude: 6900.0 to 18000.0 ft		



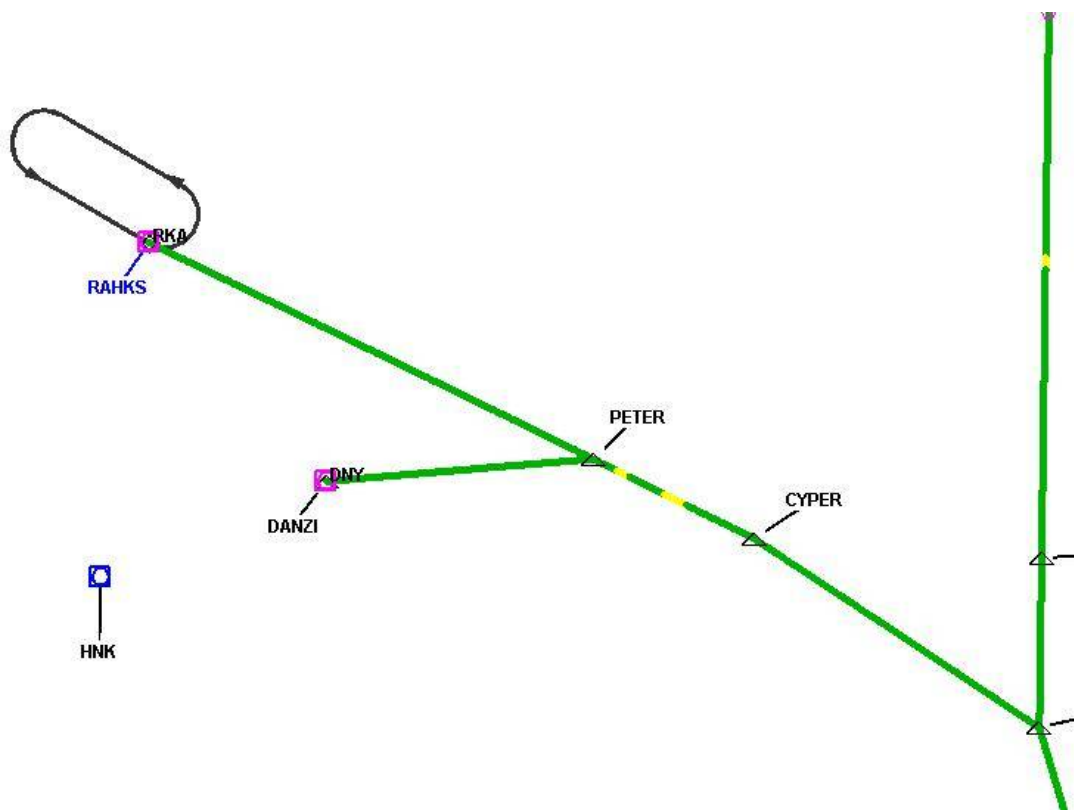
DME DME Assessment Results for KLGA1 path BAF_CASSH

Graphic Depiction 1



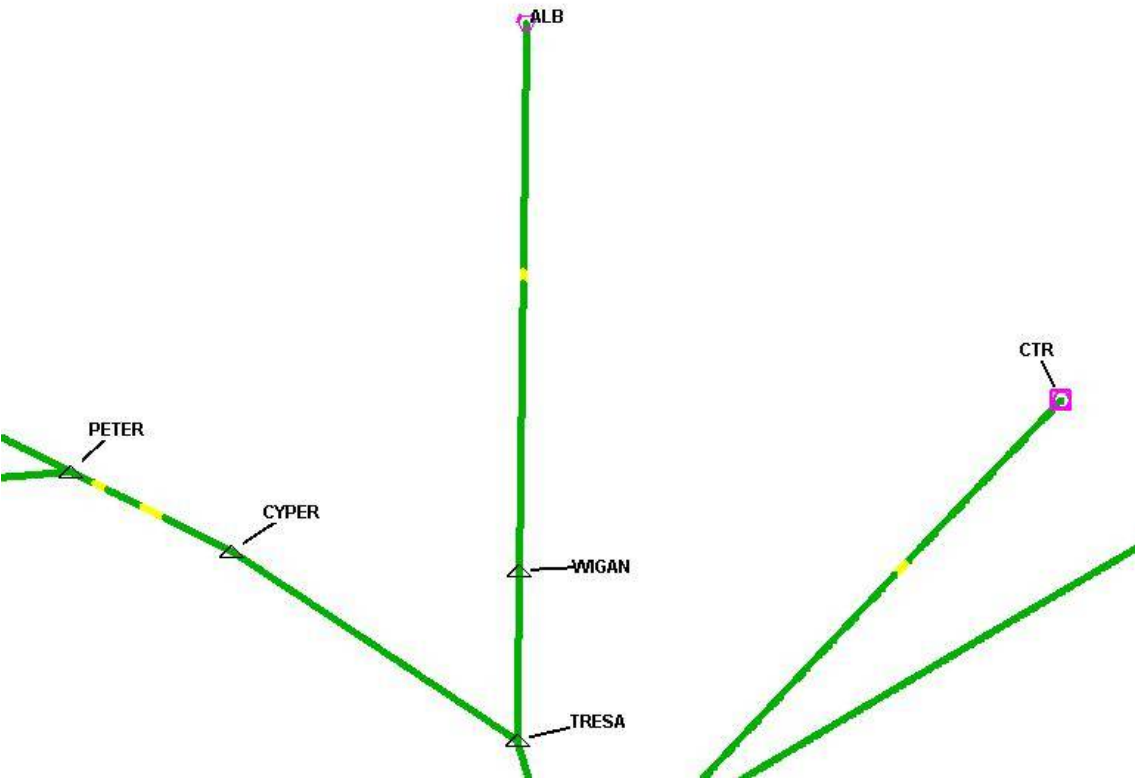
DME DME Assessment Results for KLGA1 path BAF_CASSH

Graphic Depiction 2



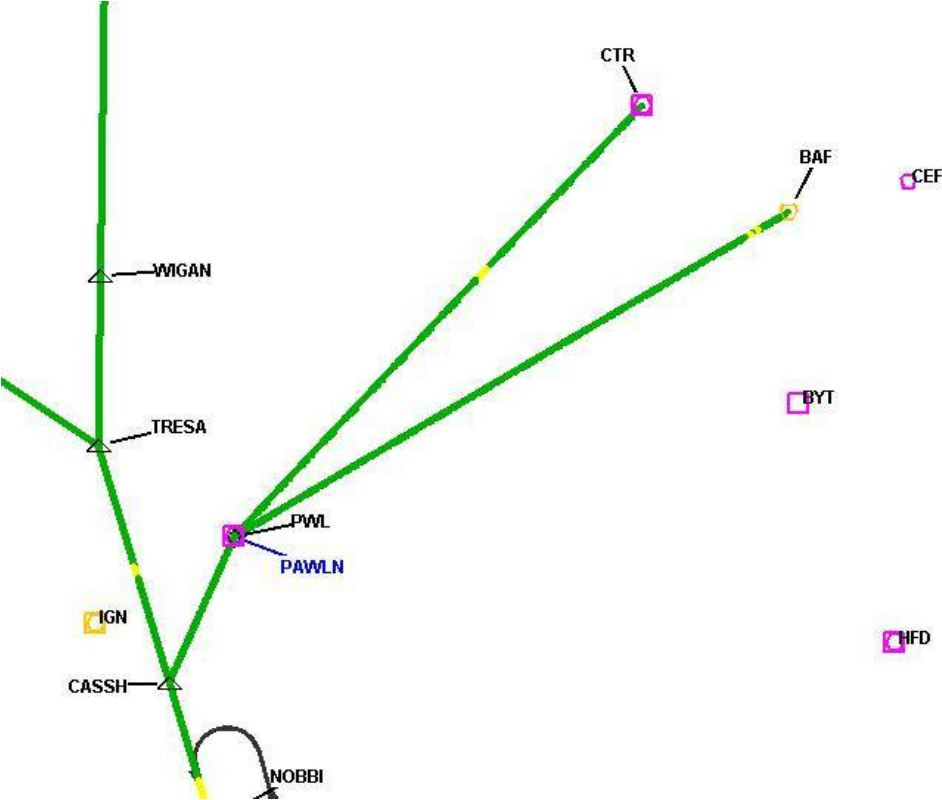
DME DME Assessment Results for KLGA1 path BAF_CASSH

Graphic Depiction 3



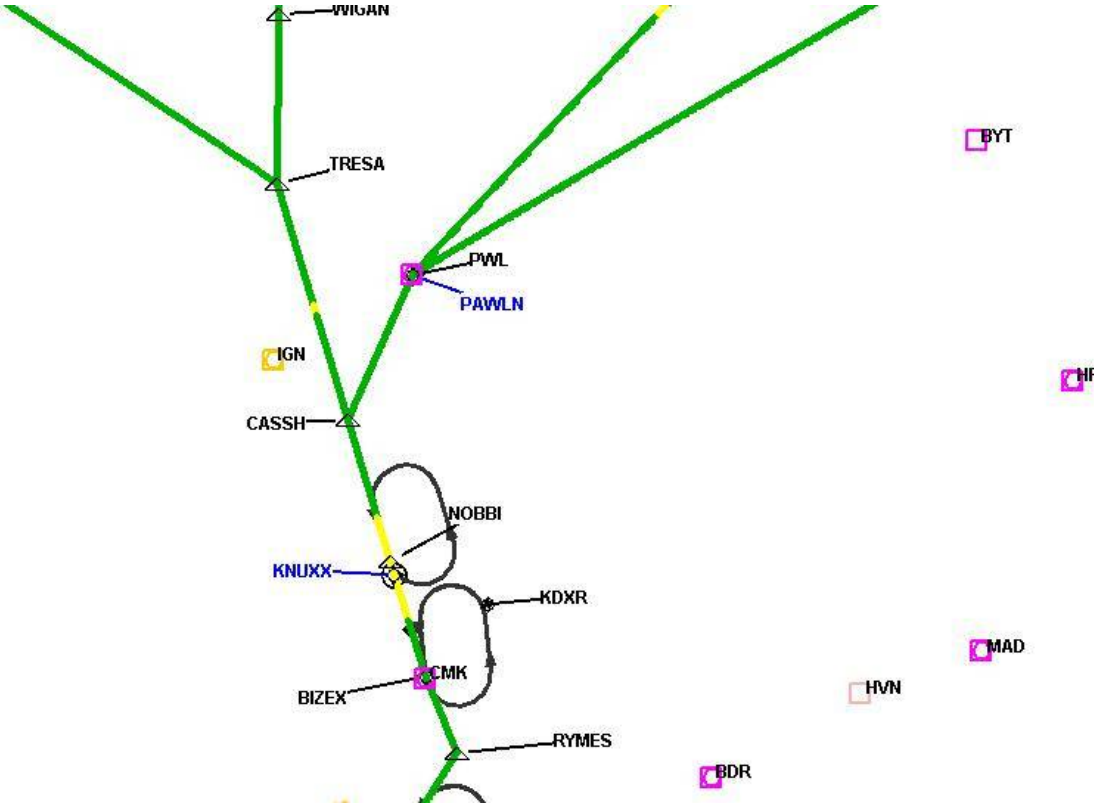
DME DME Assessment Results for KLGA1 path BAF_CASSH

Graphic Depiction 4



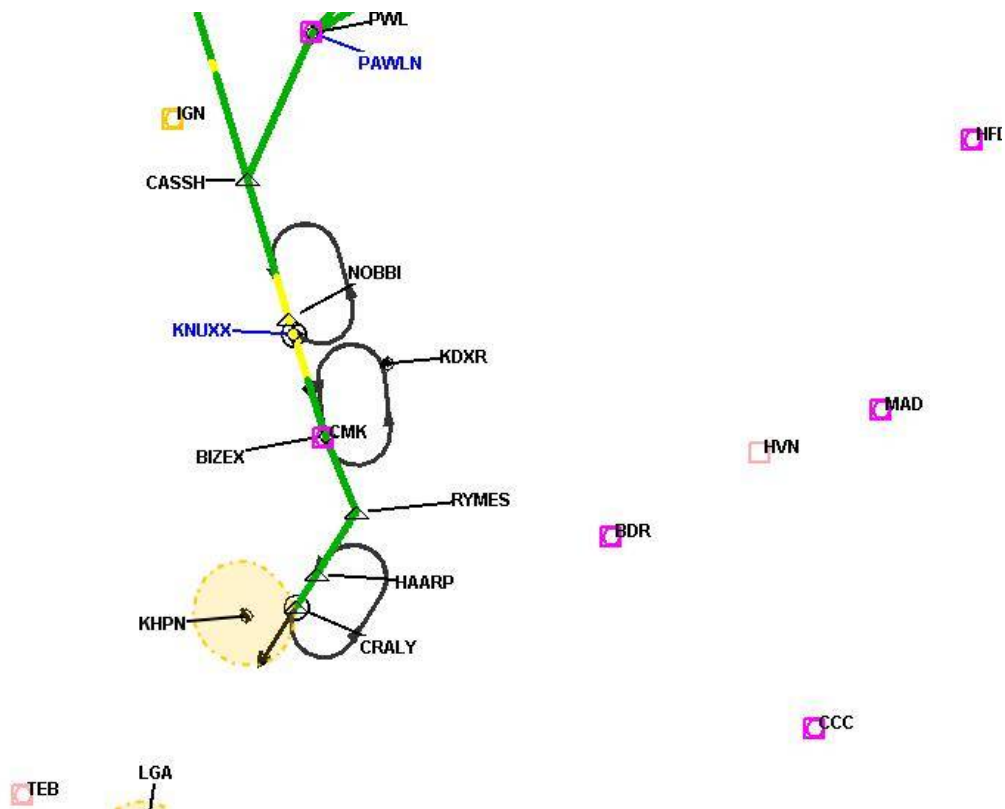
DME DME Assessment Results for KLGA1 path BAF_CASSH

Graphic Depiction 5



Graphic Depiction 6

DME DME Assessment Results for KLGA1 path BAF_CASSH



DME DME Assessment Results for KLGA1 path CTR_PAWLN

Results Summary

Flyability:	Completed
DME/DME:	Completed - No Critical DMEs
Name:	David C-CTR Cook
Project File:	C:\Users\David C-CTR Cook\Documents\TARGETS WORK\DME-DME WORK\11-27-2025 PUB\KLGA NOBB1 (RNAV) STAR\KLGA NOBB1 (RNAV) STAR DME DME_20240724.tgs
Output File:	C:\Users\David C-CTR Cook\Documents\TARGETS WORK\DME-DME WORK\11-27-2025 PUB\KLGA NOBB1 (RNAV) STAR\KDXR [IFPA] KLGA1 20240724_1459 EDT\CTR_PAWLN\KDXR KLGA1 RNAV STAR CTR PAWLN 20240724_1459 EDT.pdf
Procedure Name:	KLGA1
Software: DmeDmePlugin:	7.3.3
Date/Time:	07/24/2024 14:59 EDT
Databases:	MITRE 3DEP 3 arcsec

Failures

No Failures

Warnings

No Warnings

Informational

No Informational

Notes For Flight Check

None

Flight Plan

Name	Type	Lat/Lon	Altitude (ft)	VNAV Mode	Ground Speed (kts)	Turn Type	Leg Type
CTR	WP	N42° 17' 28.7470", W072° 56' 57.8190"	8000	VNAV	200	FLY_BY	TF
PAWLN	WP	N41° 46' 11.5100", W073° 36' 02.6400"	5000	VNAV	200	FLY_BY	TF

Flyability

Flight Type:	RNAV_STAR
Selected Airport:	KDXR [IFPA]
Climb Gradient:	None assigned
Speeds:	200 Ground Speed to 11000 FT
	240 Ground Speed to 18000 FT
	260 Ground Speed to 24000 FT
	340 Ground Speed above 24000 FT
Descent During a Turn:	Allowed
VNAV Mode:	Flight Plan

DME DME Assessment Results for KLGA1 path CTR_PAWLN

DME/DME	
RNP:	RNP 2
Flight Mode:	Manual
Line of Sight (DTED Level 0 Max):	Evaluated
Inertial Drift:	Enabled
Initial Drift:	0.558 NM
INS Drift Rate:	8.0 NM/Hour
Range Mode:	OSV
RNP Edges:	Evaluated
Min DME Range:	3.0 NM
DME Types:	DME, VOR-DME, VORTAC, TACAN
DME Include Angles:	30 to 150
Critical DMEs:	Not Allowed
DoD Facilities:	Not included
Foreign Facilities:	Not included
High DMEs:	Included
Low DMEs:	Included
Terminal DMEs:	Included
Flight Check DMEs:	Not selected
Higher Altitudes:	Not Evaluated
Near Maximum Altitude:	Not Evaluated
Automatic ESVs:	Enabled
Disabled DMEs:	None

DME/DME (Continued)										
DMEs Used										
#	Name	Lat/Lon	MAGVAR	Range	Type	Source	Critical	Status	Time	Distance
1	PVD	N41° 43' 27.6334", W071° 25' 46.7078"	14.0 W	130	DH	IFPA	NO	Enabled		
2	CEF	N42° 11' 51.1596", W072° 31' 34.7338"	14.0 W	40	L	IFPA	NO	Enabled		
3	BYT	N41° 55' 50.0220", W072° 41' 59.5420"	0.0 E	40	L	IFPA	NO	Enabled		
4	SAX	N41° 04' 03.1486", W074° 32' 17.9094"	11.0 W	130	H	IFPA	NO	Enabled		
5	HFD	N41° 38' 27.9769", W072° 32' 50.7048"	13.0 W	40	L	IFPA	NO	Enabled		
6	BOS	N42° 21' 26.8197", W070° 59' 22.3742"	16.0 W	130	DH	IFPA	NO	Enabled		
7	PWL	N41° 46' 11.1770", W073° 36' 01.9850"	12.0 W	40	L	IFPA	NO	Enabled		
8	CMK	N41° 16' 48.3219", W073° 34' 52.7751"	12.0 W	40	L	IFPA	NO	Enabled		
9	CTR	N42° 17' 28.7470", W072° 56' 57.8190"	13.0 W	40	L	IFPA	NO	Enabled		
10	CCC	N40° 55' 46.6278", W072° 47' 55.8897"	13.0 W	130	H	IFPA	NO	Enabled		
11	MAD	N41° 18' 49.9000", W072° 41' 31.9300"	13.0 W	40	L	IFPA	NO	Enabled		
12	IGN	N41° 39' 55.6258", W073° 49' 20.0613"	12.0 W	40	L	IFPA	NO	Enabled		
13	BAF	N42° 09' 43.0527", W072° 42' 58.3182"	14.0 W	40	L	IFPA	NO	Enabled		

DME DME Assessment Results for KLGA1 path CTR_PAWLN

Flight Check DME Selection						
Distance [NM]	Selected DMEs					Alternate
0.0	BYT [IFPA]	BOS [IFPA]	CEF [IFPA]	BAF [IFPA]	PVD [IFPA]	
2.1	BYT [IFPA]	BOS [IFPA]	CEF [IFPA]			
2.4	CEF [IFPA]	BYT [IFPA]				
2.9	BYT [IFPA]	PWL [IFPA]	BAF [IFPA]	PVD [IFPA]	CEF [IFPA]	
3.8	BYT [IFPA]	CTR [IFPA]	PWL [IFPA]	BAF [IFPA]	CEF [IFPA]	
5.8	BAF [IFPA]	PWL [IFPA]	CTR [IFPA]	CEF [IFPA]		
8.3	BYT [IFPA]	PWL [IFPA]	CTR [IFPA]	BAF [IFPA]	CEF [IFPA]	
25.0	CCC [IFPA]	BAF [IFPA]	IGN [IFPA]	CTR [IFPA]	PWL [IFPA]	BYT [IFPA]
32.2	BYT [IFPA]	CMK [IFPA]	BAF [IFPA]	CTR [IFPA]	IGN [IFPA]	
32.5	BYT [IFPA]	CMK [IFPA]	CTR [IFPA]	IGN [IFPA]		
33.9	CCC [IFPA]	IGN [IFPA]	CTR [IFPA]	PWL [IFPA]	CMK [IFPA]	
38.8	CCC [IFPA]	IGN [IFPA]	SAX [IFPA]	CTR [IFPA]	CMK [IFPA]	
39.8	CCC [IFPA]	IGN [IFPA]	SAX [IFPA]	CMK [IFPA]		

Inertial Drift Segments			
#	Start Location	End Location	Length [NM]

Available DMEs by Waypoints			
Waypoint Before	Waypoint After	DME List	Suggested DMEs
CTR	PAWLN	PVD [IFPA], CEF [IFPA], BYT [IFPA], SAX [IFPA], HFD [IFPA], BOS [IFPA], PWL [IFPA], CMK [IFPA], CTR [IFPA], CCC [IFPA], MAD [IFPA], IGN [IFPA], BAF [IFPA]	

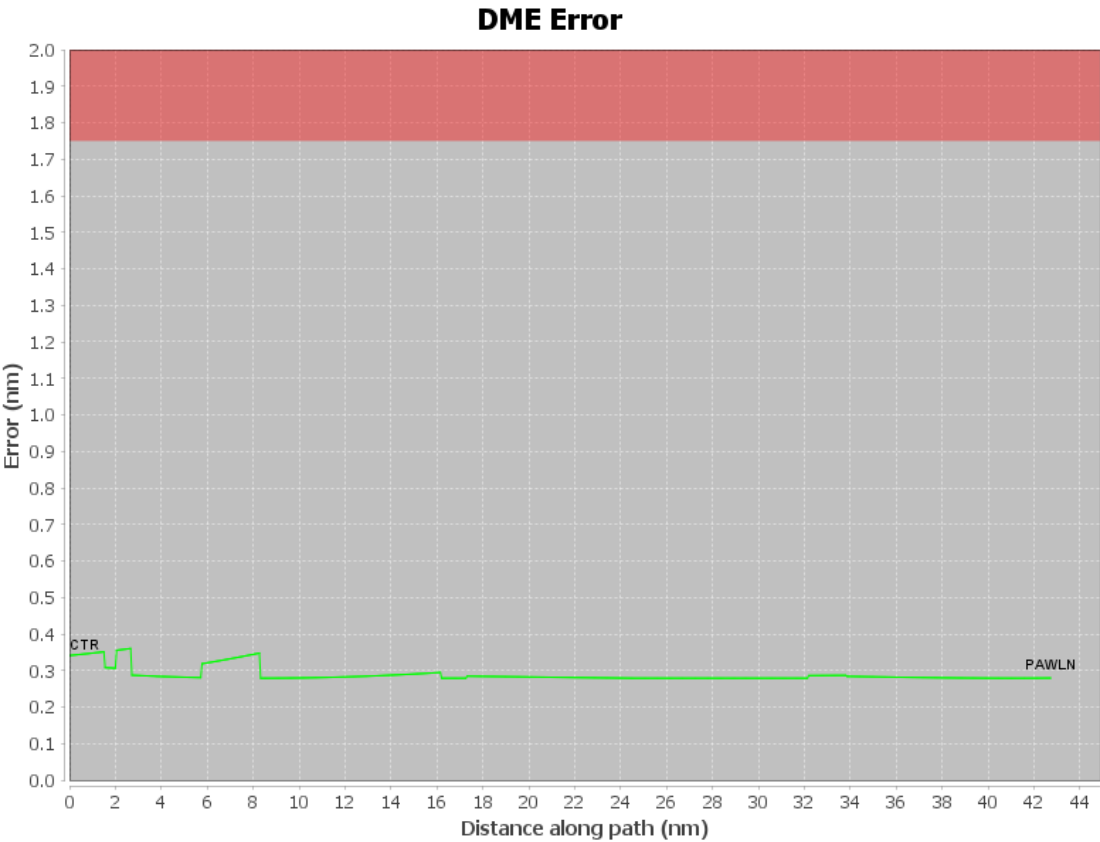
DME DME Assessment Results for KLGA1 path CTR_PAWLN

User Data Files

#	File Name
1	New Analysis.udt
2	UserDMEsKHPN [IFPA] VALRE1 RNAV STAR_20240724_0747 EDT.udt
3	UserDMEsKLGA [IFPA] VADDR1 RNAV STAR_20240723_1047 EDT.udt

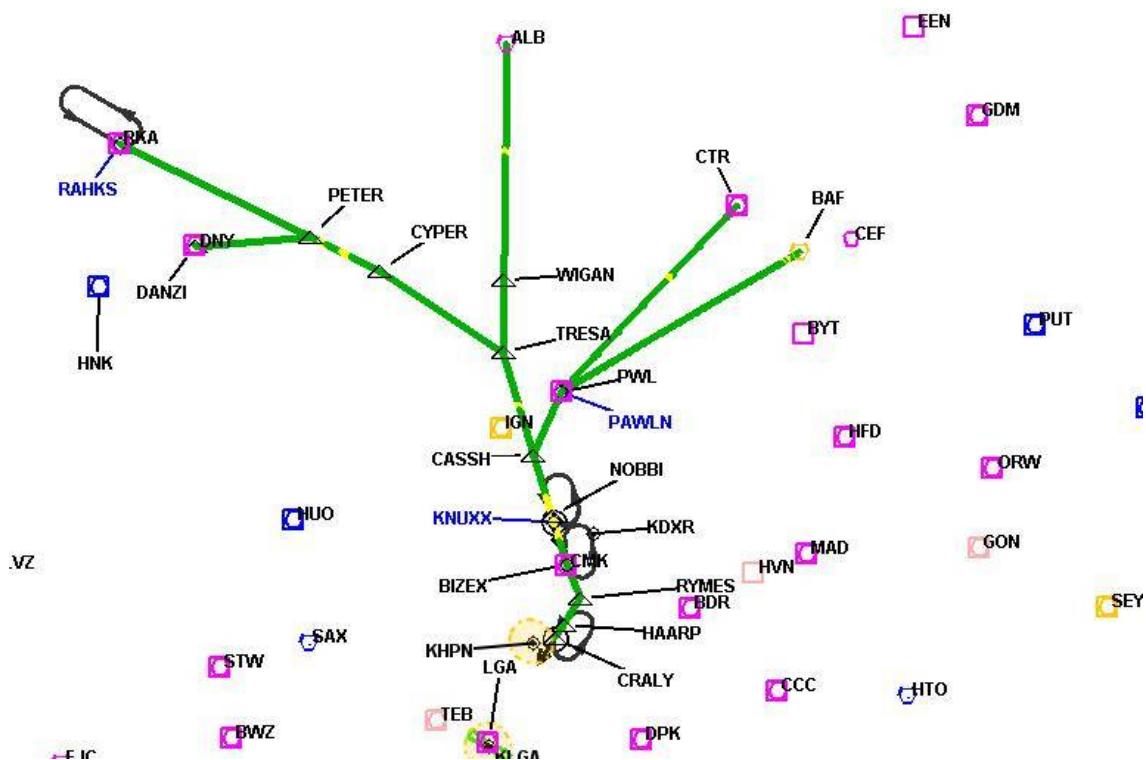
User DMEs

#	Name	Lat/Lon	MAGVAR	Range	Elevation [ft]	Frequency	Replaces	Status
1	UDT ESV CAM CAM [IFPA]	N42° 59' 39.4398", W073° 20' 38.4681"	14.0 W	40	1490	115.0	UDT ESV CAM	
ESV:		Bearing [True]: 186.0° to 236.0° Bearing [Mag]: 200.0° to 250.0°				Arc Distance: Out to 65.0 NM Altitude: 4900.0 to 18000.0 ft		
2	UDT ESV GDM GDM [IFPA]	N42° 32' 45.3150", W072° 03' 29.4776"	14.0 W	40	1279.6	116.95	UDT ESV GDM	
ESV:		Bearing [True]: 266.0° to 281.0° Bearing [Mag]: 280.0° to 295.0°				Arc Distance: Out to 83.0 NM Altitude: 7900.0 to 19300.0 ft		
3	ETX [IFPA] ETX [IFPA]	N40° 34' 51.7405", W075° 41' 02.5085"	9.0 W	40	741.7	110.2	ETX [IFPA]	
ESV:		Bearing [True]: 17.0° to 22.0° Bearing [Mag]: 26.0° to 31.0°				Arc Distance: Out to 106.0 NM Altitude: 8700.0 to 18800.0 ft		
4	UDT ESV SAX SAX [IFPA]	N41° 04' 03.1486", W074° 32' 17.9094"	11.0 W	130	1399.5	115.7	UDT ESV SAX	
ESV:		Bearing [True]: 24.0° to 67.0° Bearing [Mag]: 35.0° to 78.0°				Arc Distance: Out to 64.0 NM Altitude: 4500.0 to 12500.0 ft		
5	UDT ESV HUO HUO [IFPA]	N41° 24' 34.8718", W074° 35' 29.7393"	11.0 W	130	1300.3	116.1	UDT ESV HUO	
ESV:		Bearing [True]: 359.0° to 69.0° Bearing [Mag]: 10.0° to 80.0°				Arc Distance: Out to 65.0 NM Altitude: 6900.0 to 15900.0 ft		
6	UDT ESV MAD MAD [IFPA]	N41° 18' 49.9000", W072° 41' 31.9300"	13.0 W	40	216.3	110.4	UDT ESV MAD	
ESV:		Bearing [True]: 317.0° to 7.0° Bearing [Mag]: 330.0° to 20.0°				Arc Distance: Out to 85.0 NM Altitude: 7000.0 to 18000.0 ft		
7	UDT ESV CCC CCC [IFPA]	N40° 55' 46.6278", W072° 47' 55.8897"	13.0 W	130	84.7	114.55	UDT ESV CCC	
ESV:		Bearing [True]: 317.0° to 7.0° Bearing [Mag]: 330.0° to 20.0°				Arc Distance: Out to 75.0 NM Altitude: 4900.0 to 14600.0 ft		
8	UDT ESV HFD HFD [IFPA]	N41° 38' 27.9769", W072° 32' 50.7048"	13.0 W	40	849.1	114.9	UDT ESV HFD	
ESV:		Bearing [True]: 277.0° to 323.0° Bearing [Mag]: 290.0° to 336.0°				Arc Distance: Out to 95.0 NM Altitude: 6900.0 to 18000.0 ft		



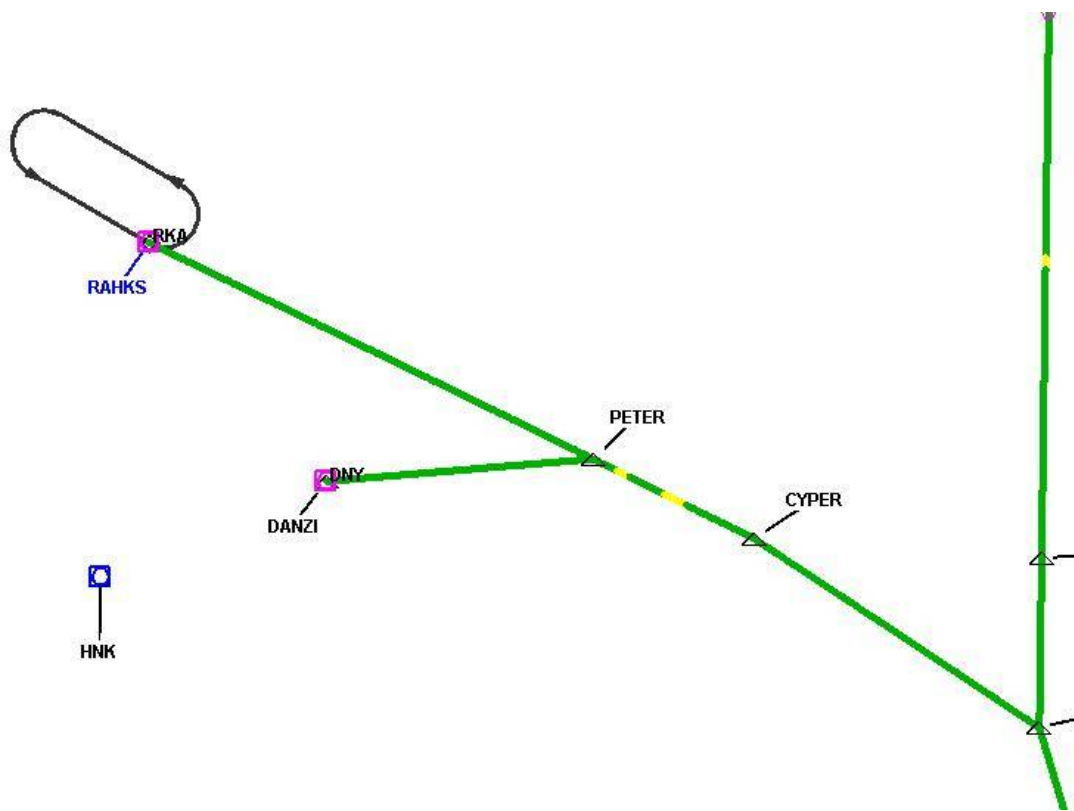
DME DME Assessment Results for KLGA1 path CTR_PAWLN

Graphic Depiction 1



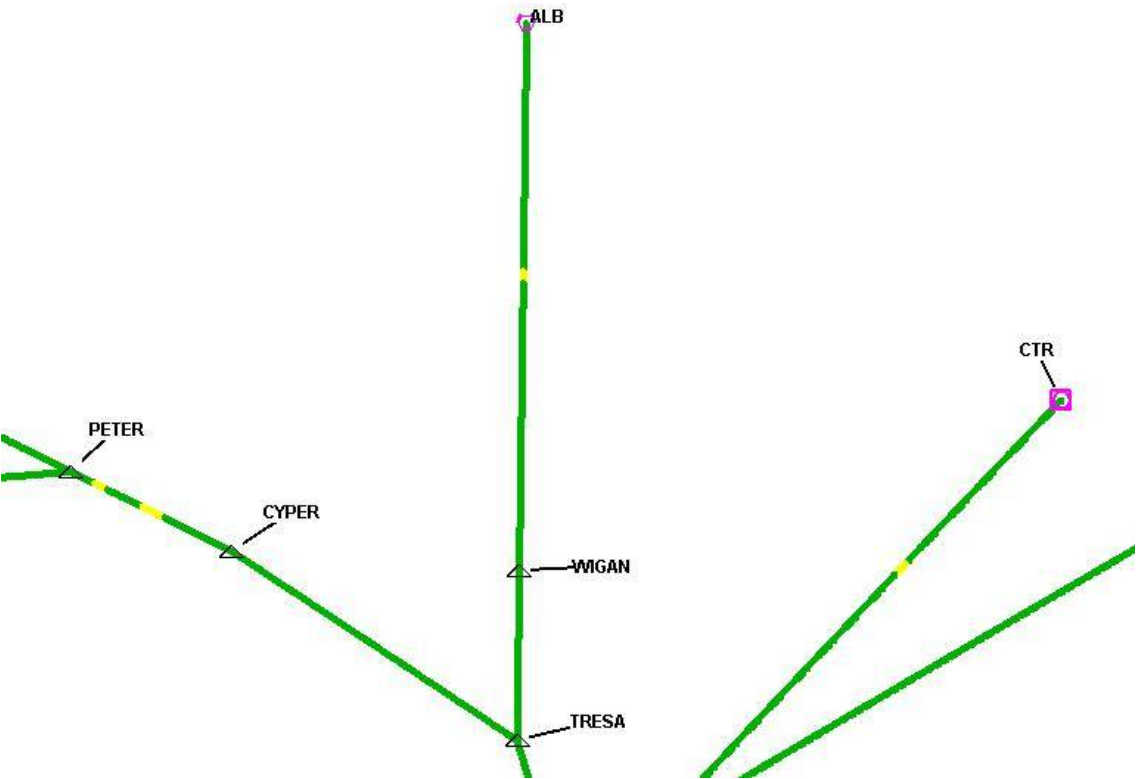
DME DME Assessment Results for KLGA1 path CTR_PAWLN

Graphic Depiction 2



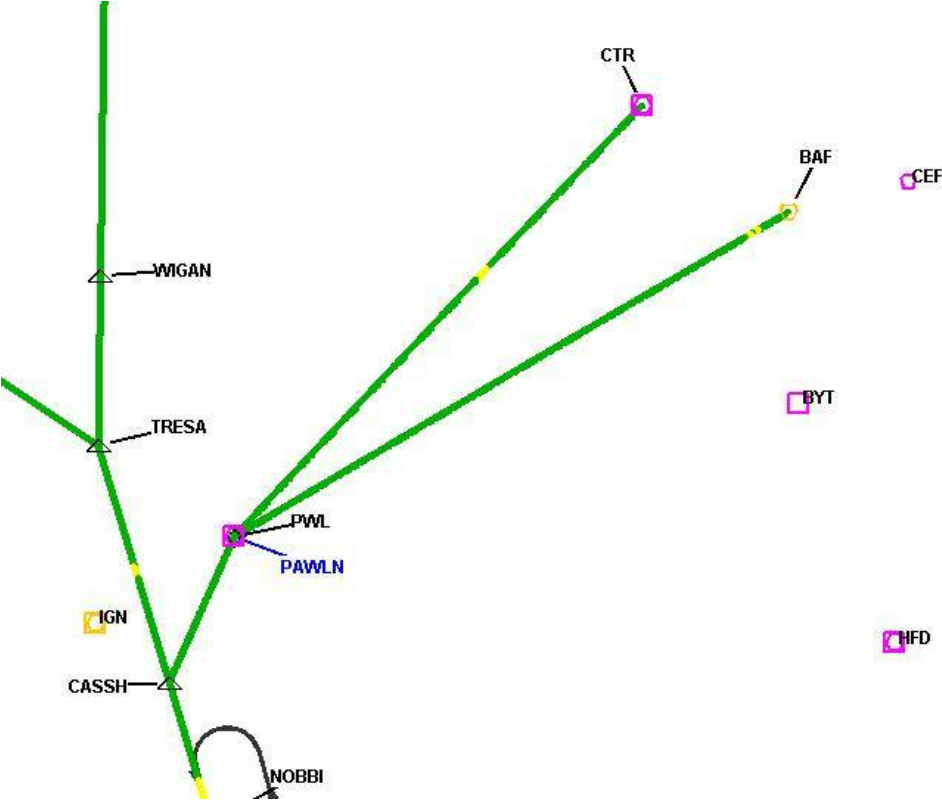
DME DME Assessment Results for KLGA1 path CTR_PAWLN

Graphic Depiction 3



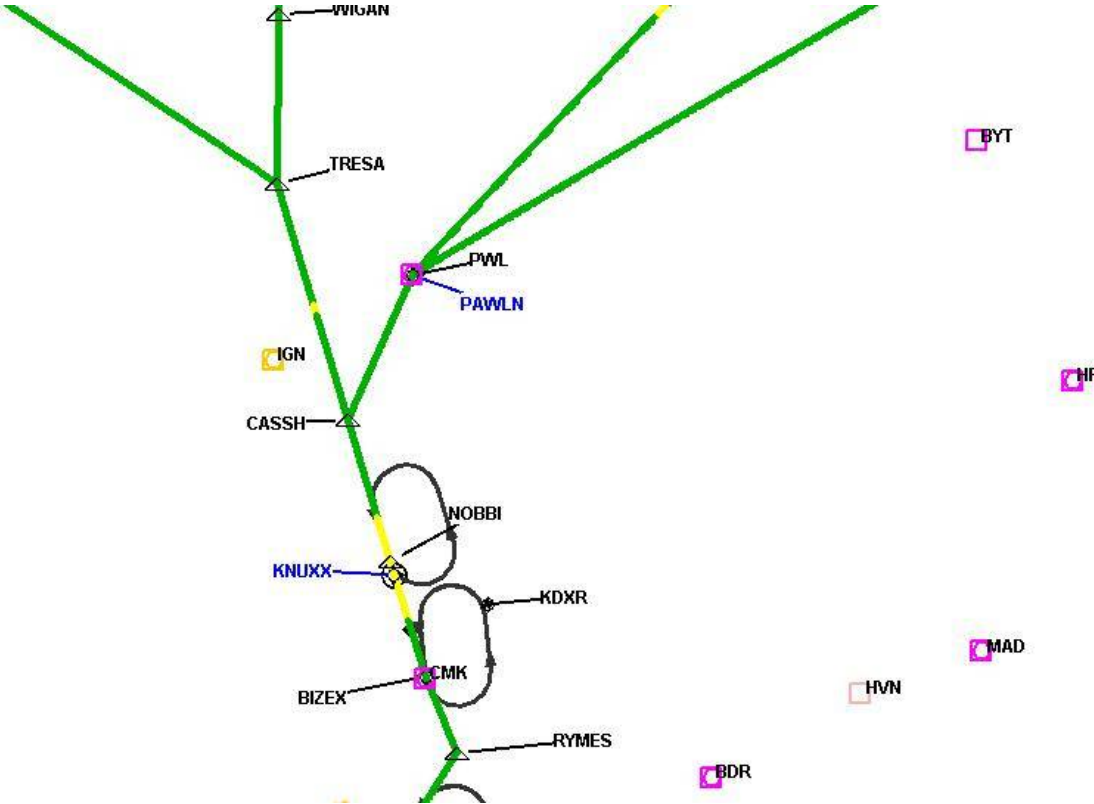
DME DME Assessment Results for KLGA1 path CTR_PAWLN

Graphic Depiction 4



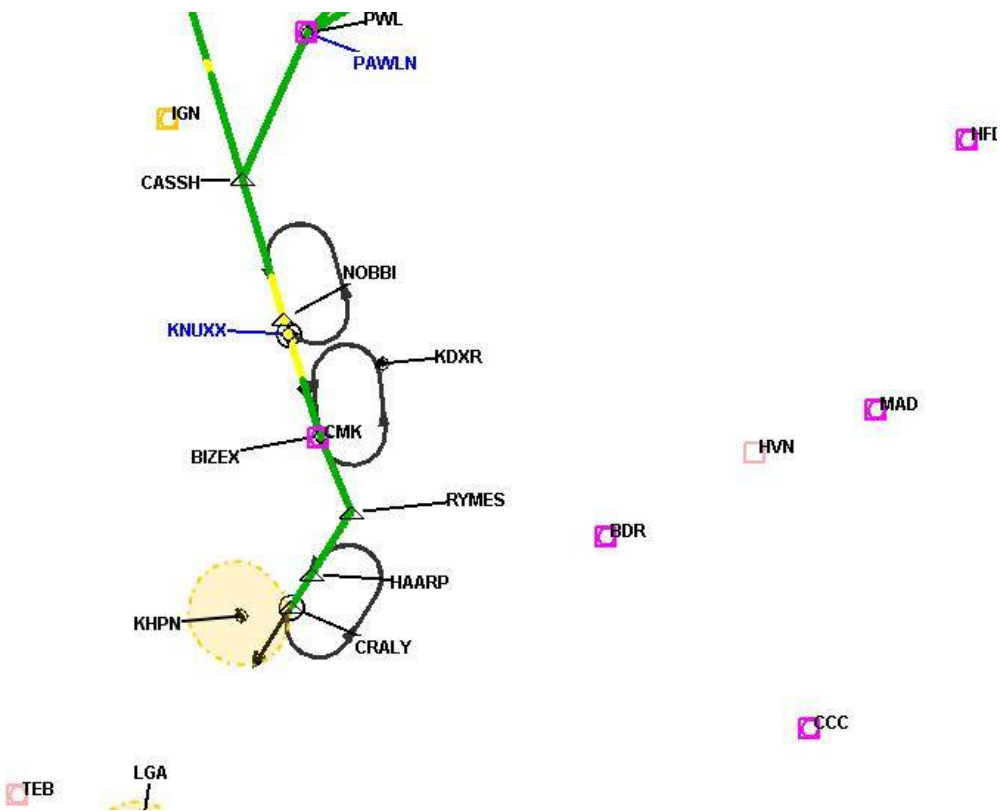
DME DME Assessment Results for KLGA1 path CTR_PAWLN

Graphic Depiction 5



DME DME Assessment Results for KLGA1 path CTR_PAWLN

Graphic Depiction 6



DME DME Assessment Results for KLGA1 path DANZI_CRALY

Results Summary

Flyability:	Completed
DME/DME:	Completed - No Critical DMEs
Name:	David C-CTR Cook
Project File:	C:\Users\David C-CTR Cook\Documents\TARGETS WORK\DME-DME WORK\11-27-2025 PUB\KLGA NOBBI1 (RNAV) STAR\KLGA NOBBI1 (RNAV) STAR DME DME_20240724.tgs
Output File:	C:\Users\David C-CTR Cook\Documents\TARGETS WORK\DME-DME WORK\11-27-2025 PUB\KLGA NOBBI1 (RNAV) STAR\KDXR [IFPA] KLGA1 20240724_1459 EDT\ DANZI_CRALY\KDXR KLGA1 RNAV STAR DANZI CRALY 20240724_1459 EDT.pdf
Procedure Name:	KLGA1
Software: DmeDmePlugin:	7.3.3
Date/Time:	07/24/2024 14:59 EDT
Databases:	MITRE 3DEP 3 arcsec

Failures

No Failures

Warnings

No Warnings

Informational

No Informational

Notes For Flight Check

None

Flight Plan

Name	Type	Lat/Lon	Altitude (ft)	VNAV Mode	Ground Speed (kts)	Turn Type	Leg Type
DANZI	WP	N42° 10' 41.8600", W074° 57' 24.1900"	10000	VNAV	200	FLY_BY	TF
PETER	WP	N42° 12' 18.9300", W074° 31' 50.2500"	10000	VNAV	200	FLY_BY	TF
CYPER	WP	N42° 06' 32.3700", W074° 16' 25.5200"	10000	VNAV	200	FLY_BY	TF
TRESA	WP	N41° 52' 49.6100", W073° 49' 06.8000"	8000	VNAV	200	FLY_BY	TF
CASSH	WP	N41° 35' 38.1600", W073° 42' 17.0700"	5000	VNAV	200	FLY_BY	TF
NOBBI	WP	N41° 25' 26.3400", W073° 38' 16.0900"	4000	VNAV	200	FLY_BY	TF
BIZEX	WP	N41° 17' 02.8600", W073° 34' 50.2000"	4000	VNAV	200	FLY_BY	TF
RYMES	WP	N41° 11' 30.0000", W073° 31' 50.7200"	4000	VNAV	200	FLY_BY	TF
HAARP	WP	N41° 06' 58.8700", W073° 35' 36.5400"	3000	VNAV	200	FLY_BY	TF
CRALY	WP	N41° 04' 37.9600", W073° 37' 33.7900"	3000	VNAV	200	FLY_OVER	TF

Flyability

Flight Type:	RNAV_STAR
Selected Airport:	KDXR [IFPA]
Climb Gradient:	None assigned
Speeds:	200 Ground Speed to 11000 FT
	240 Ground Speed to 18000 FT
	260 Ground Speed to 24000 FT
	340 Ground Speed above 24000 FT
Descent During a Turn:	Allowed
VNAV Mode:	Flight Plan

DME DME Assessment Results for KLGA1 path DANZI_CRALY

DME/DME	
RNP:	RNP 2
Flight Mode:	Manual
Line of Sight (DTED Level 0 Max):	Evaluated
Inertial Drift:	Enabled
Initial Drift:	0.558 NM
INS Drift Rate:	8.0 NM/Hour
Range Mode:	OSV
RNP Edges:	Evaluated
Min DME Range:	3.0 NM
DME Types:	DME, VOR-DME, VORTAC, TACAN
DME Include Angles:	30 to 150
Critical DMEs:	Not Allowed
DoD Facilities:	Not included
Foreign Facilities:	Not included
High DMEs:	Included
Low DMEs:	Included
Terminal DMEs:	Included
Flight Check DMEs:	Not selected
Higher Altitudes:	Not Evaluated
Near Maximum Altitude:	Not Evaluated
Automatic ESVs:	Enabled
Disabled DMEs:	None

DME/DME (Continued)										
DMEs Used										
#	Name	Lat/Lon	MAGVAR	Range	Type	Source	Critical	Status	Time	Distance
1	HNK	N42° 03' 47.0050", W075° 18' 58.6240"	11.0 W	130	H	IFPA	NO	Enabled		
2	HUO	N41° 24' 34.8718", W074° 35' 29.7393"	11.0 W	130	H	IFPA	NO	Enabled		
3	LGA	N40° 47' 01.3731", W073° 52' 06.9569"	12.0 W	40	L	IFPA	NO	Enabled		
4	DPK	N40° 47' 30.3601", W073° 18' 13.2386"	12.0 W	40	L	IFPA	NO	Enabled		
5	SAX	N41° 04' 03.1486", W074° 32' 17.9094"	11.0 W	130	H	IFPA	NO	Enabled		
6	HFD	N41° 38' 27.9769", W072° 32' 50.7048"	13.0 W	40	L	IFPA	NO	Enabled		
7	PWL	N41° 46' 11.1770", W073° 36' 01.9850"	12.0 W	40	L	IFPA	NO	Enabled		
8	CMK	N41° 16' 48.3219", W073° 34' 52.7751"	12.0 W	40	L	IFPA	NO	Enabled		
9	ETX	N40° 34' 51.7405", W075° 41' 02.5085"	9.0 W	40	L	IFPA	NO	Enabled		
10	CCC	N40° 55' 46.6278", W072° 47' 55.8897"	13.0 W	130	H	IFPA	NO	Enabled		
11	BDR	N41° 09' 38.5404", W073° 07' 28.1507"	12.0 W	40	L	IFPA	NO	Enabled		
12	RKA	N42° 27' 58.7900", W075° 14' 21.2210"	11.0 W	40	L	IFPA	NO	Enabled		
13	IGN	N41° 39' 55.6258", W073° 49' 20.0613"	12.0 W	40	L	IFPA	NO	Enabled		
14	JFK	N40° 37' 58.3816", W073° 46' 17.0103"	12.0 W	130	H	IFPA	NO	Enabled		
15	DNY	N42° 10' 41.8100", W074° 57' 24.9860"	11.0 W	40	L	IFPA	NO	Enabled		

DME DME Assessment Results for KLGA1 path DANZI_CRALY

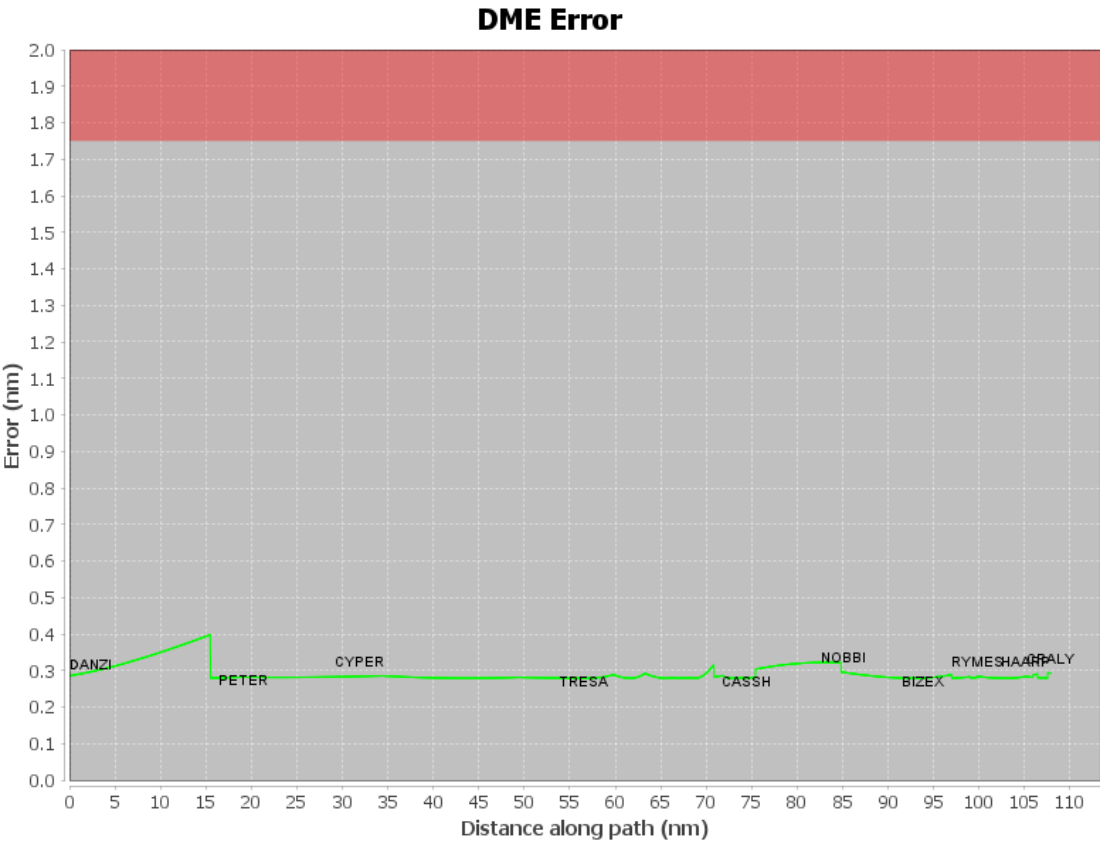
Flight Check DME Selection						
Distance [NM]	Selected DMEs					Alternate
0.0	RKA [IFPA]	HNK [IFPA]	ETX [IFPA]			
2.6	RKA [IFPA]	HNK [IFPA]				
15.8	HUO [IFPA]	DNY [IFPA]	HNK [IFPA]	RKA [IFPA]		
19.4	HUO [IFPA]	DNY [IFPA]	HNK [IFPA]	RKA [IFPA]	HFD [IFPA]	
22.0	HUO [IFPA]	DNY [IFPA]	RKA [IFPA]	HFD [IFPA]		
23.8	HUO [IFPA]	DNY [IFPA]	HFD [IFPA]			
24.8	HUO [IFPA]	DNY [IFPA]	HFD [IFPA]	IGN [IFPA]		
28.9	HUO [IFPA]	DNY [IFPA]	PWL [IFPA]	HFD [IFPA]	IGN [IFPA]	
40.4	HUO [IFPA]	PWL [IFPA]	HFD [IFPA]	IGN [IFPA]		
47.5	HUO [IFPA]	PWL [IFPA]	SAX [IFPA]	HFD [IFPA]	IGN [IFPA]	
58.7	SAX [IFPA]	PWL [IFPA]	CCC [IFPA]	IGN [IFPA]	CMK [IFPA]	
61.1	IGN [IFPA]	PWL [IFPA]	SAX [IFPA]	CMK [IFPA]		
65.3	CMK [IFPA]	PWL [IFPA]	SAX [IFPA]			
65.6	CMK [IFPA]	PWL [IFPA]	IGN [IFPA]			
66.2	CMK [IFPA]	PWL [IFPA]	SAX [IFPA]	CCC [IFPA]	IGN [IFPA]	
66.4	CMK [IFPA]	PWL [IFPA]	SAX [IFPA]			
69.8	SAX [IFPA]	CMK [IFPA]				
71.8	IGN [IFPA]	PWL [IFPA]	SAX [IFPA]	CMK [IFPA]		
73.2	SAX [IFPA]	BDR [IFPA]	IGN [IFPA]	PWL [IFPA]	CMK [IFPA]	
75.4	IGN [IFPA]	PWL [IFPA]	BDR [IFPA]			
81.7	BDR [IFPA]	PWL [IFPA]	IGN [IFPA]	CMK [IFPA]		
84.8	LGA [IFPA]	BDR [IFPA]	PWL [IFPA]	IGN [IFPA]	CMK [IFPA]	
89.6	LGA [IFPA]	BDR [IFPA]	PWL [IFPA]	DPK [IFPA]		
89.8	LGA [IFPA]	BDR [IFPA]	PWL [IFPA]	IGN [IFPA]	DPK [IFPA]	
103.2	CMK [IFPA]	BDR [IFPA]	IGN [IFPA]	JFK [IFPA]	DPK [IFPA]	LGA [IFPA]
105.9	CMK [IFPA]	BDR [IFPA]	LGA [IFPA]	DPK [IFPA]	JFK [IFPA]	

Inertial Drift Segments			
#	Start Location	End Location	Length [NM]

DME DME Assessment Results for KLGA1 path DANZI_CRALY

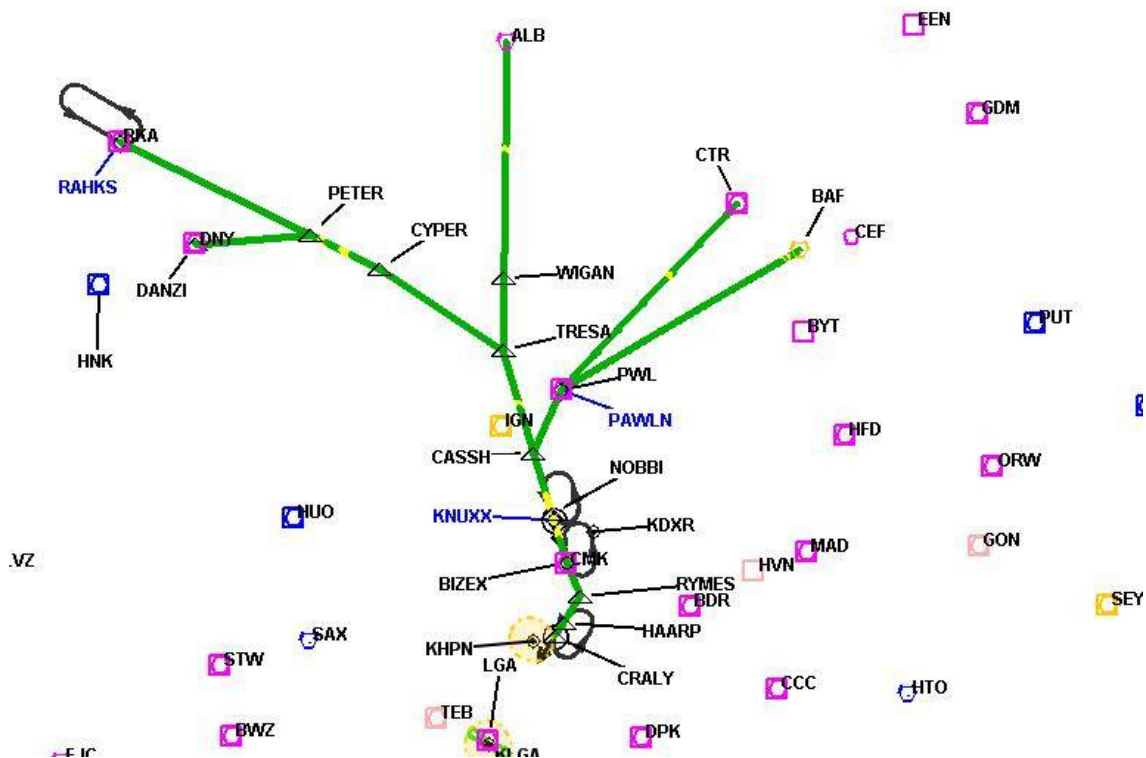
Available DMEs by Waypoints			
Waypoint Before	Waypoint After	DME List	Suggested DMEs
DANZI	PETER	HNK [IFPA], HUO [IFPA], ETX [IFPA], RKA [IFPA], DNY [IFPA]	
PETER	CYPER	HNK [IFPA], HUO [IFPA], RKA [IFPA], IGN [IFPA], HFD [IFPA], PWL [IFPA], DNY [IFPA]	
CYPER	TRESA	HUO [IFPA], SAX [IFPA], CCC [IFPA], IGN [IFPA], HFD [IFPA], PWL [IFPA], DNY [IFPA]	
TRESA	CASSH	HUO [IFPA], SAX [IFPA], CCC [IFPA], BDR [IFPA], IGN [IFPA], HFD [IFPA], PWL [IFPA], CMK [IFPA]	
CASSH	NOBBI	LGA [IFPA], BDR [IFPA], SAX [IFPA], IGN [IFPA], PWL [IFPA], CMK [IFPA]	
NOBBI	BIZEX	LGA [IFPA], DPK [IFPA], BDR [IFPA], IGN [IFPA], PWL [IFPA], CMK [IFPA]	
BIZEX	RYMES	LGA [IFPA], DPK [IFPA], BDR [IFPA], CCC [IFPA], IGN [IFPA], JFK [IFPA], PWL [IFPA]	
RYMES	HAARP	LGA [IFPA], DPK [IFPA], BDR [IFPA], IGN [IFPA], JFK [IFPA], PWL [IFPA], CMK [IFPA]	
HAARP	CRALY	LGA [IFPA], DPK [IFPA], BDR [IFPA], IGN [IFPA], JFK [IFPA], CMK [IFPA]	

User Data Files								
#	File Name							
1	New Analysis.udt							
2	UserDMEsKHPN [IFPA] VALRE1 RNAV STAR_20240724_0747 EDT.udt							
3	UserDMEsKLGA [IFPA] VADDR1 RNAV STAR_20240723_1047 EDT.udt							
User DMEs								
#	Name	Lat/Lon	MAGVAR	Range	Elevation [ft]	Frequency	Replaces	Status
1	UDT ESV CAM CAM [IFPA]	N42° 59' 39.4398", W073° 20' 38.4681"	14.0 W	40	1490	115.0	UDT ESV CAM	
ESV:		Bearing [True]: 186.0° to 236.0° Bearing [Mag]: 200.0° to 250.0°				Arc Distance: Out to 65.0 NM Altitude: 4900.0 to 18000.0 ft		
2	UDT ESV GDM GDM [IFPA]	N42° 32' 45.3150", W072° 03' 29.4776"	14.0 W	40	1279.6	116.95	UDT ESV GDM	
ESV:		Bearing [True]: 266.0° to 281.0° Bearing [Mag]: 280.0° to 295.0°				Arc Distance: Out to 83.0 NM Altitude: 7900.0 to 19300.0 ft		
3	ETX [IFPA] ETX [IFPA]	N40° 34' 51.7405", W075° 41' 02.5085"	9.0 W	40	741.7	110.2	ETX [IFPA]	
ESV:		Bearing [True]: 17.0° to 22.0° Bearing [Mag]: 26.0° to 31.0°				Arc Distance: Out to 106.0 NM Altitude: 8700.0 to 18800.0 ft		
4	UDT ESV SAX SAX [IFPA]	N41° 04' 03.1486", W074° 32' 17.9094"	11.0 W	130	1399.5	115.7	UDT ESV SAX	
ESV:		Bearing [True]: 24.0° to 67.0° Bearing [Mag]: 35.0° to 78.0°				Arc Distance: Out to 64.0 NM Altitude: 4500.0 to 12500.0 ft		
5	UDT ESV HUO HUO [IFPA]	N41° 24' 34.8718", W074° 35' 29.7393"	11.0 W	130	1300.3	116.1	UDT ESV HUO	
ESV:		Bearing [True]: 359.0° to 69.0° Bearing [Mag]: 10.0° to 80.0°				Arc Distance: Out to 65.0 NM Altitude: 6900.0 to 15900.0 ft		
6	UDT ESV MAD MAD [IFPA]	N41° 18' 49.9000", W072° 41' 31.9300"	13.0 W	40	216.3	110.4	UDT ESV MAD	
ESV:		Bearing [True]: 317.0° to 7.0° Bearing [Mag]: 330.0° to 20.0°				Arc Distance: Out to 85.0 NM Altitude: 7000.0 to 18000.0 ft		
7	UDT ESV CCC CCC [IFPA]	N40° 55' 46.6278", W072° 47' 55.8897"	13.0 W	130	84.7	114.55	UDT ESV CCC	
ESV:		Bearing [True]: 317.0° to 7.0° Bearing [Mag]: 330.0° to 20.0°				Arc Distance: Out to 75.0 NM Altitude: 4900.0 to 14600.0 ft		
8	UDT ESV HFD HFD [IFPA]	N41° 38' 27.9769", W072° 32' 50.7048"	13.0 W	40	849.1	114.9	UDT ESV HFD	
ESV:		Bearing [True]: 277.0° to 323.0° Bearing [Mag]: 290.0° to 336.0°				Arc Distance: Out to 95.0 NM Altitude: 6900.0 to 18000.0 ft		



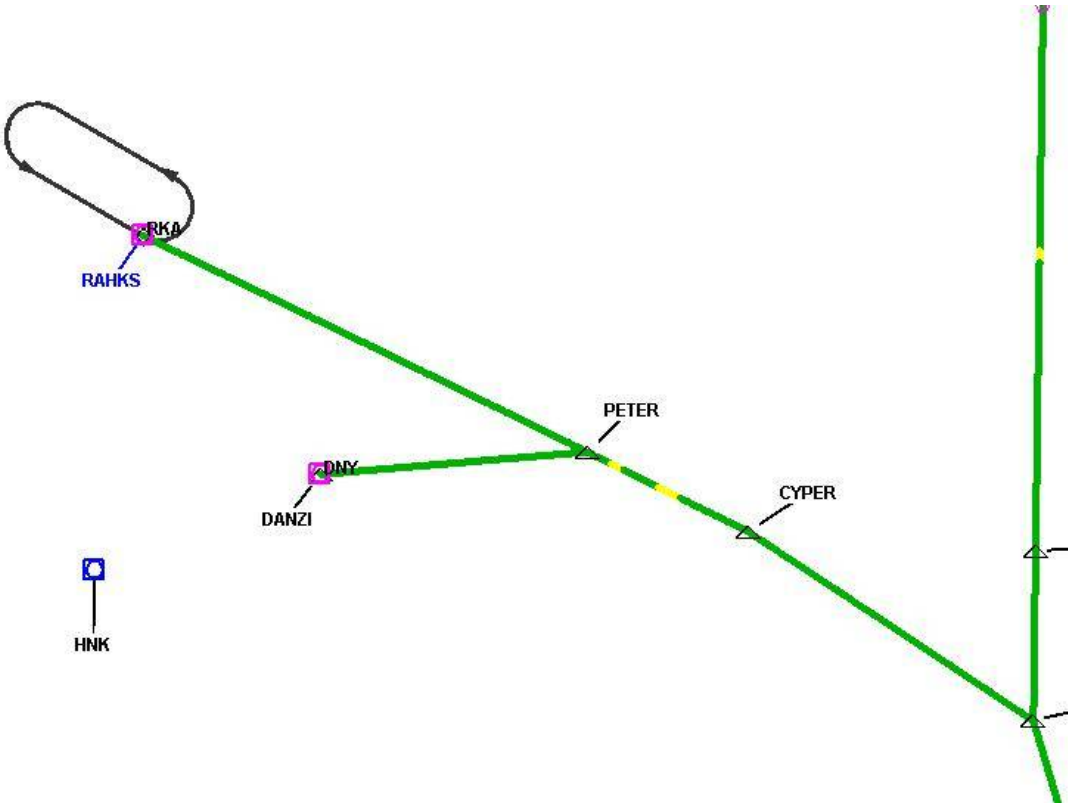
DME DME Assessment Results for KLGA1 path DANZI_CRALY

Graphic Depiction 1

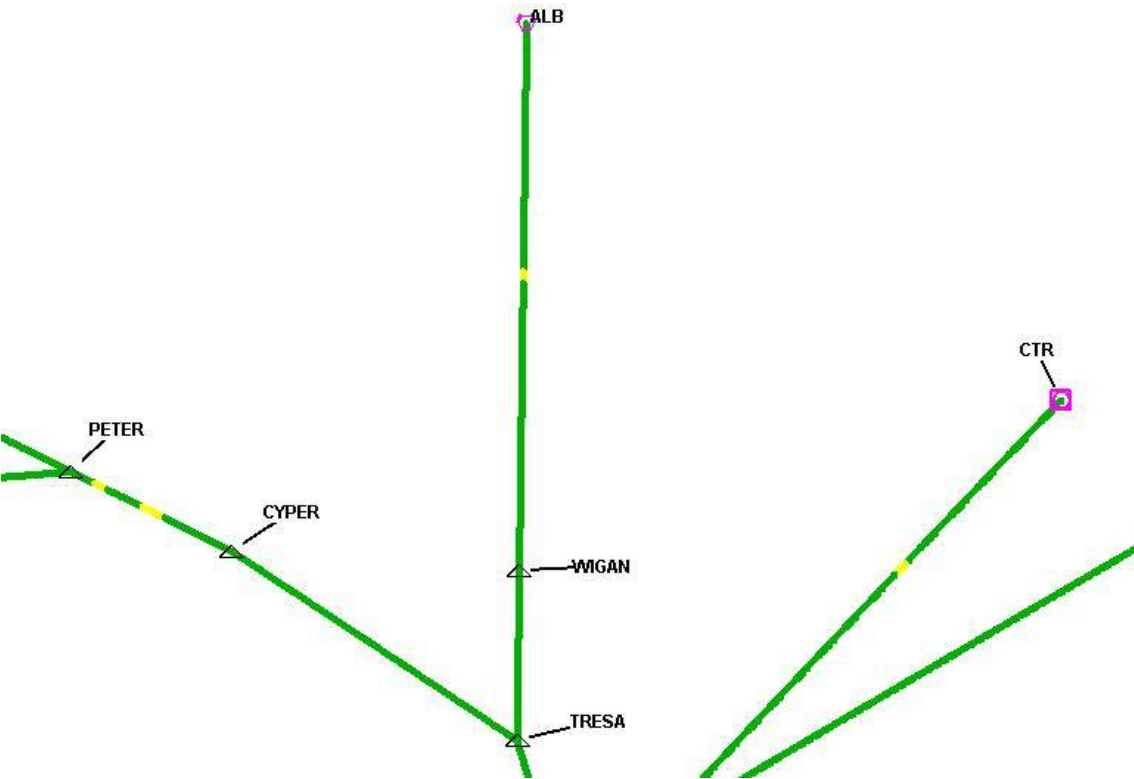


DME DME Assessment Results for KLGA1 path DANZI_CRALY

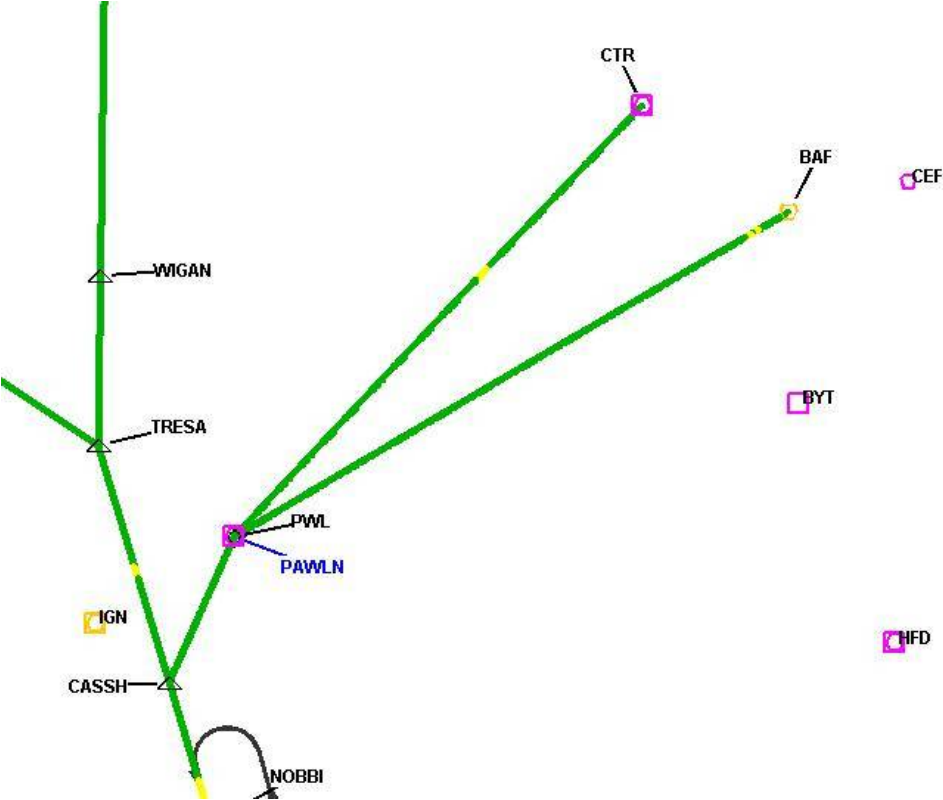
Graphic Depiction 2



Graphic Depiction 3

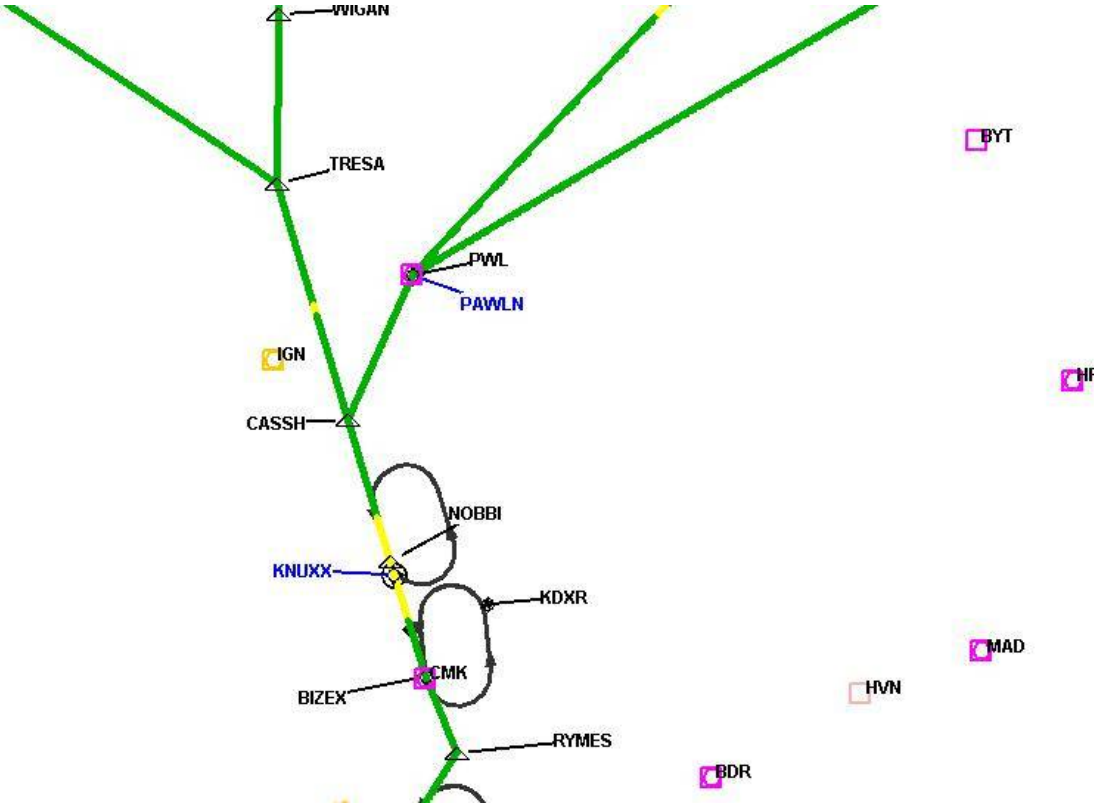


Graphic Depiction 4



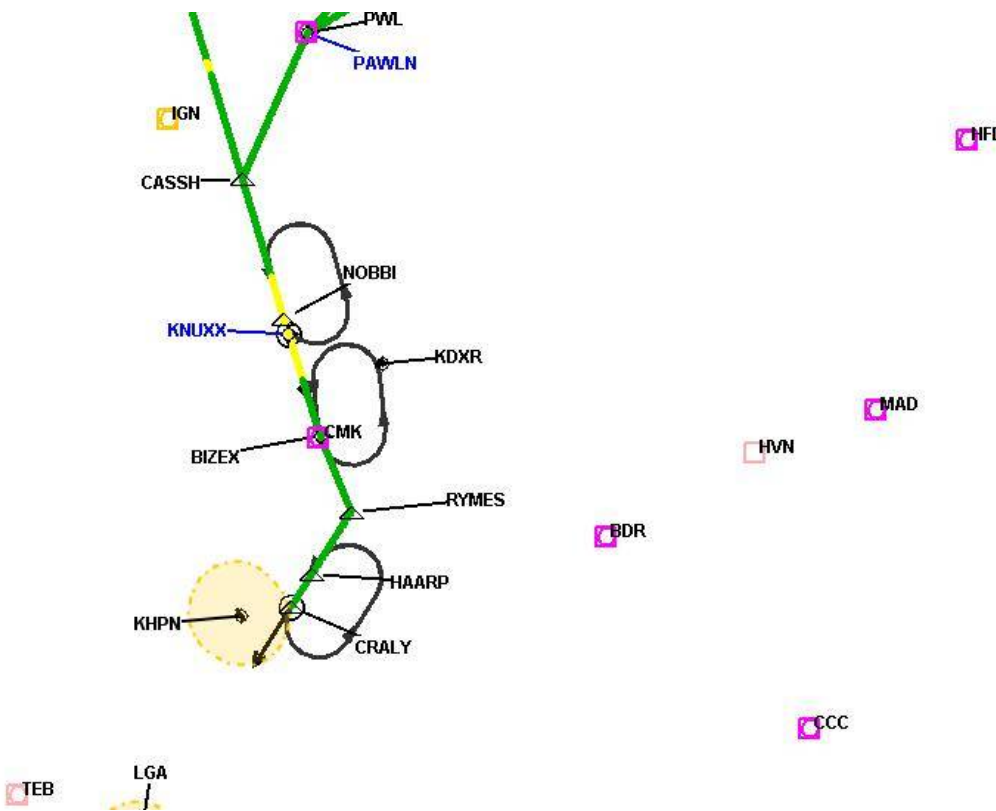
DME DME Assessment Results for KLGA1 path DANZI_CRALY

Graphic Depiction 5



DME DME Assessment Results for KLGA1 path DANZI_CRALY

Graphic Depiction 6



DME DME Assessment Results for KLGA1 path NOBBI_KNUXX

Results Summary	
Flyability:	Completed
DME/DME:	Completed - No Critical DMEs
Name:	David C-CTR Cook
Project File:	C:\Users\David C-CTR Cook\Documents\TARGETS WORK\DME-DME WORK\11-27-2025 PUB\KLGA NOBBI1 (RNAV) STAR\KLGA NOBBI1 (RNAV) STAR DME DME_20240724.tgs
Output File:	C:\Users\David C-CTR Cook\Documents\TARGETS WORK\DME-DME WORK\11-27-2025 PUB\KLGA NOBBI1 (RNAV) STAR\KDXR [IFPA] KLGA1 20240724_1459 EDT\NOBBI_KNUXX\KDXR KLGA1 RNAV STAR NOBBI KNUXX 20240724_1459 EDT.pdf
Procedure Name:	KLGA1
Software: DmeDmePlugin:	7.3.3
Date/Time:	07/24/2024 14:59 EDT
Databases:	MITRE 3DEP 3 arcsec

Failures
No Failures

Warnings
No Warnings

Informational
No Informational

Notes For Flight Check
None

Flight Plan							
Name	Type	Lat/Lon	Altitude (ft)	VNAV Mode	Ground Speed (kts)	Turn Type	Leg Type
NOBBI	WP	N41° 25' 26.3400", W073° 38' 16.0900"	4000	VNAV	200	FLY_BY	TF
KNUXX	WP	N41° 24' 28.2405", W073° 37' 53.0562"	4000	VNAV	200	FLY_OVER	TF

Flyability	
Flight Type:	RNAV_STAR
Selected Airport:	KDXR [IFPA]
Climb Gradient:	None assigned
Speeds:	200 Ground Speed to 11000 FT
	240 Ground Speed to 18000 FT
	260 Ground Speed to 24000 FT
	340 Ground Speed above 24000 FT
Descent During a Turn:	Allowed
VNAV Mode:	Flight Plan

DME DME Assessment Results for KLGA1 path NOBBI_KNUXX

DME/DME	
RNP:	RNP 2
Flight Mode:	Manual
Line of Sight (DTED Level 0 Max):	Evaluated
Inertial Drift:	Enabled
Initial Drift:	0.558 NM
INS Drift Rate:	8.0 NM/Hour
Range Mode:	OSV
RNP Edges:	Evaluated
Min DME Range:	3.0 NM
DME Types:	DME, VOR-DME, VORTAC, TACAN
DME Include Angles:	30 to 150
Critical DMEs:	Not Allowed
DoD Facilities:	Not included
Foreign Facilities:	Not included
High DMEs:	Included
Low DMEs:	Included
Terminal DMEs:	Included
Flight Check DMEs:	Not selected
Higher Altitudes:	Not Evaluated
Near Maximum Altitude:	Not Evaluated
Automatic ESVs:	Enabled
Disabled DMEs:	None

DME/DME (Continued)										
DMEs Used										
#	Name	Lat/Lon	MAGVAR	Range	Type	Source	Critical	Status	Time	Distance
1	LGA	N40° 47' 01.3731", W073° 52' 06.9569"	12.0 W	40	L	IFPA	NO	Enabled		
2	BDR	N41° 09' 38.5404", W073° 07' 28.1507"	12.0 W	40	L	IFPA	NO	Enabled		
3	IGN	N41° 39' 55.6258", W073° 49' 20.0613"	12.0 W	40	L	IFPA	NO	Enabled		
4	PWL	N41° 46' 11.1770", W073° 36' 01.9850"	12.0 W	40	L	IFPA	NO	Enabled		
5	CMK	N41° 16' 48.3219", W073° 34' 52.7751"	12.0 W	40	L	IFPA	NO	Enabled		

Flight Check DME Selection						
Distance [NM]	Selected DMEs					Alternate
0.0	LGA [IFPA]	BDR [IFPA]	PWL [IFPA]	IGN [IFPA]	CMK [IFPA]	

Inertial Drift Segments			
#	Start Location	End Location	Length [NM]

Available DMEs by Waypoints			
Waypoint Before	Waypoint After	DME List	Suggested DMEs
NOBBI	KNUXX	LGA [IFPA], BDR [IFPA], IGN [IFPA], PWL [IFPA], CMK [IFPA]	

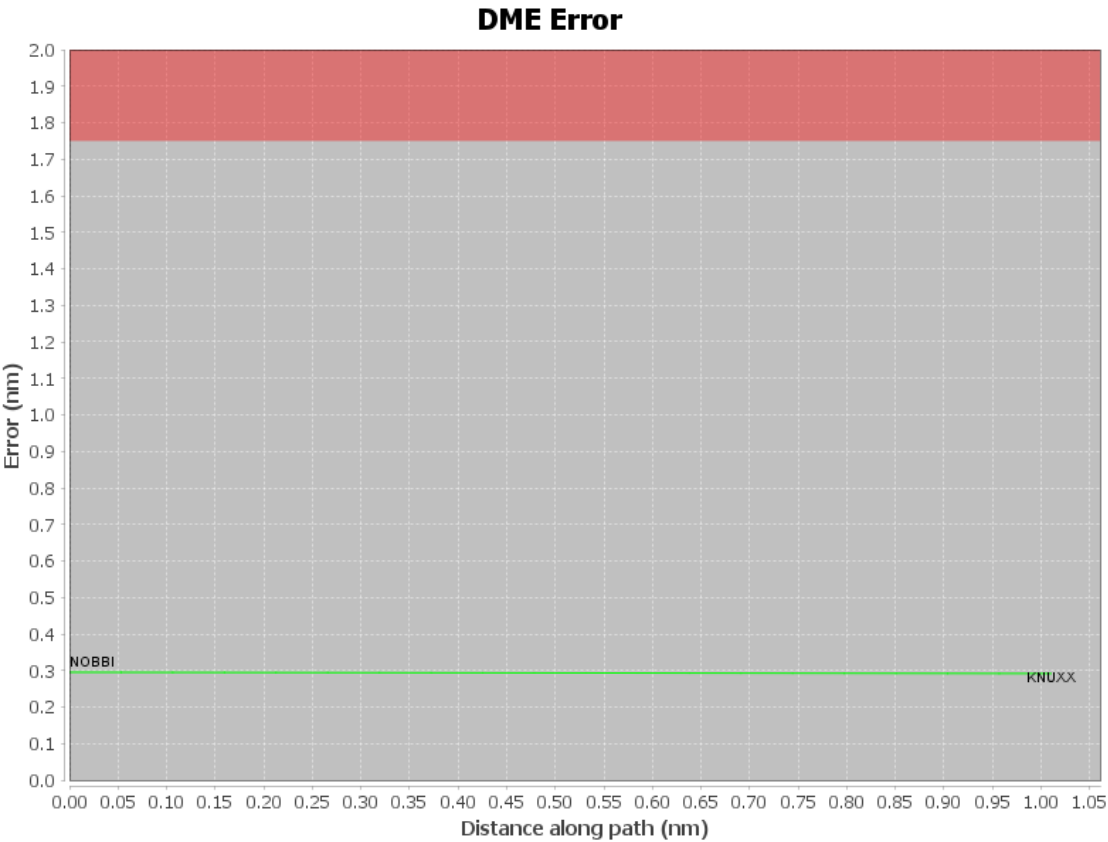
DME DME Assessment Results for KLGA1 path NOBBI_KNUXX

User Data Files

#	File Name
1	New Analysis.udt
2	UserDMEsKHPN [IFPA] VALRE1 RNAV STAR_20240724_0747 EDT.udt
3	UserDMEsKLGA [IFPA] VADDR1 RNAV STAR_20240723_1047 EDT.udt

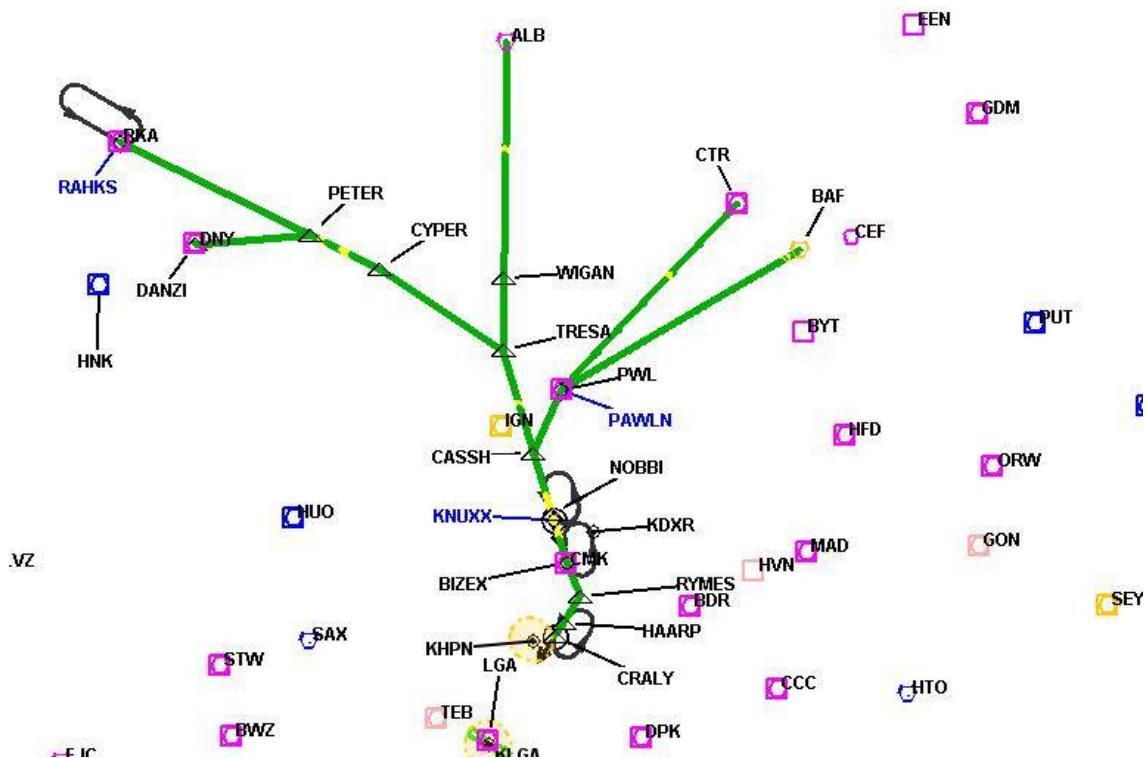
User DMEs

#	Name	Lat/Lon	MAGVAR	Range	Elevation [ft]	Frequency	Replaces	Status
1	UDT ESV CAM CAM [IFPA]	N42° 59' 39.4398", W073° 20' 38.4681"	14.0 W	40	1490	115.0	UDT ESV CAM	
ESV:		Bearing [True]: 186.0° to 236.0° Bearing [Mag]: 200.0° to 250.0°				Arc Distance: Out to 65.0 NM Altitude: 4900.0 to 18000.0 ft		
2	UDT ESV GDM GDM [IFPA]	N42° 32' 45.3150", W072° 03' 29.4776"	14.0 W	40	1279.6	116.95	UDT ESV GDM	
ESV:		Bearing [True]: 266.0° to 281.0° Bearing [Mag]: 280.0° to 295.0°				Arc Distance: Out to 83.0 NM Altitude: 7900.0 to 19300.0 ft		
3	ETX [IFPA] ETX [IFPA]	N40° 34' 51.7405", W075° 41' 02.5085"	9.0 W	40	741.7	110.2	ETX [IFPA]	
ESV:		Bearing [True]: 17.0° to 22.0° Bearing [Mag]: 26.0° to 31.0°				Arc Distance: Out to 106.0 NM Altitude: 8700.0 to 18800.0 ft		
4	UDT ESV SAX SAX [IFPA]	N41° 04' 03.1486", W074° 32' 17.9094"	11.0 W	130	1399.5	115.7	UDT ESV SAX	
ESV:		Bearing [True]: 24.0° to 67.0° Bearing [Mag]: 35.0° to 78.0°				Arc Distance: Out to 64.0 NM Altitude: 4500.0 to 12500.0 ft		
5	UDT ESV HUO HUO [IFPA]	N41° 24' 34.8718", W074° 35' 29.7393"	11.0 W	130	1300.3	116.1	UDT ESV HUO	
ESV:		Bearing [True]: 359.0° to 69.0° Bearing [Mag]: 10.0° to 80.0°				Arc Distance: Out to 65.0 NM Altitude: 6900.0 to 15900.0 ft		
6	UDT ESV MAD MAD [IFPA]	N41° 18' 49.9000", W072° 41' 31.9300"	13.0 W	40	216.3	110.4	UDT ESV MAD	
ESV:		Bearing [True]: 317.0° to 7.0° Bearing [Mag]: 330.0° to 20.0°				Arc Distance: Out to 85.0 NM Altitude: 7000.0 to 18000.0 ft		
7	UDT ESV CCC CCC [IFPA]	N40° 55' 46.6278", W072° 47' 55.8897"	13.0 W	130	84.7	114.55	UDT ESV CCC	
ESV:		Bearing [True]: 317.0° to 7.0° Bearing [Mag]: 330.0° to 20.0°				Arc Distance: Out to 75.0 NM Altitude: 4900.0 to 14600.0 ft		
8	UDT ESV HFD HFD [IFPA]	N41° 38' 27.9769", W072° 32' 50.7048"	13.0 W	40	849.1	114.9	UDT ESV HFD	
ESV:		Bearing [True]: 277.0° to 323.0° Bearing [Mag]: 290.0° to 336.0°				Arc Distance: Out to 95.0 NM Altitude: 6900.0 to 18000.0 ft		



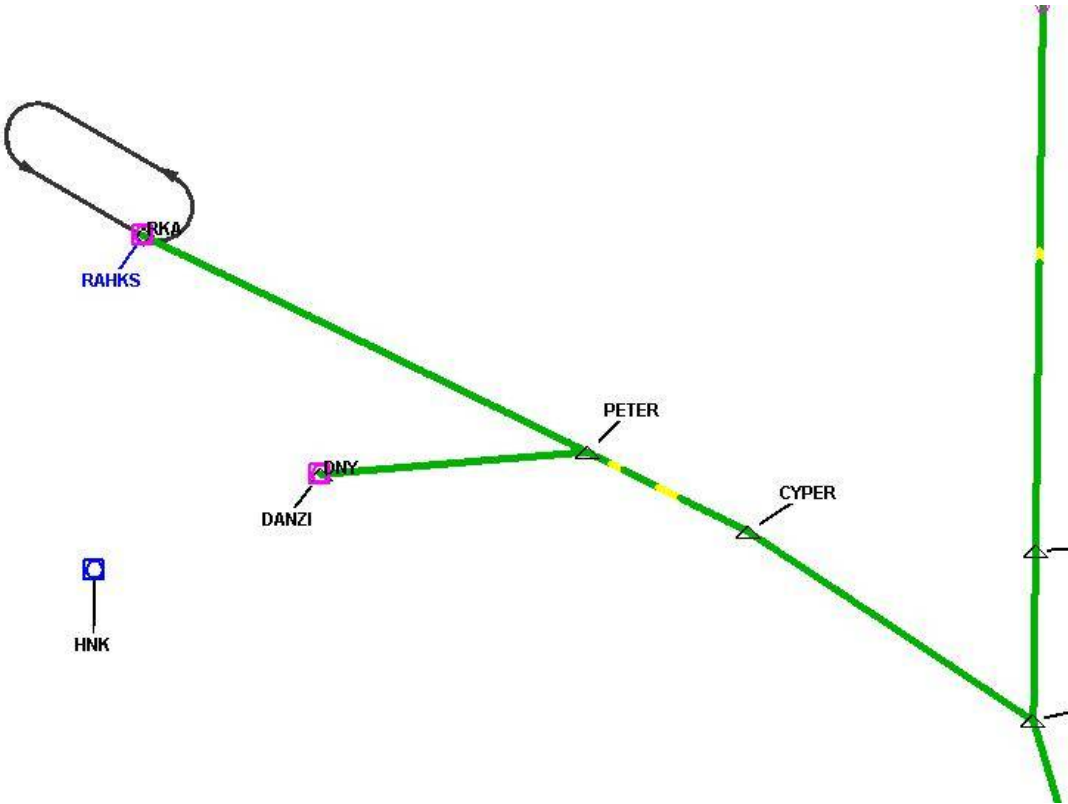
DME DME Assessment Results for KLGA1 path NOBBI_KNUXX

Graphic Depiction 1



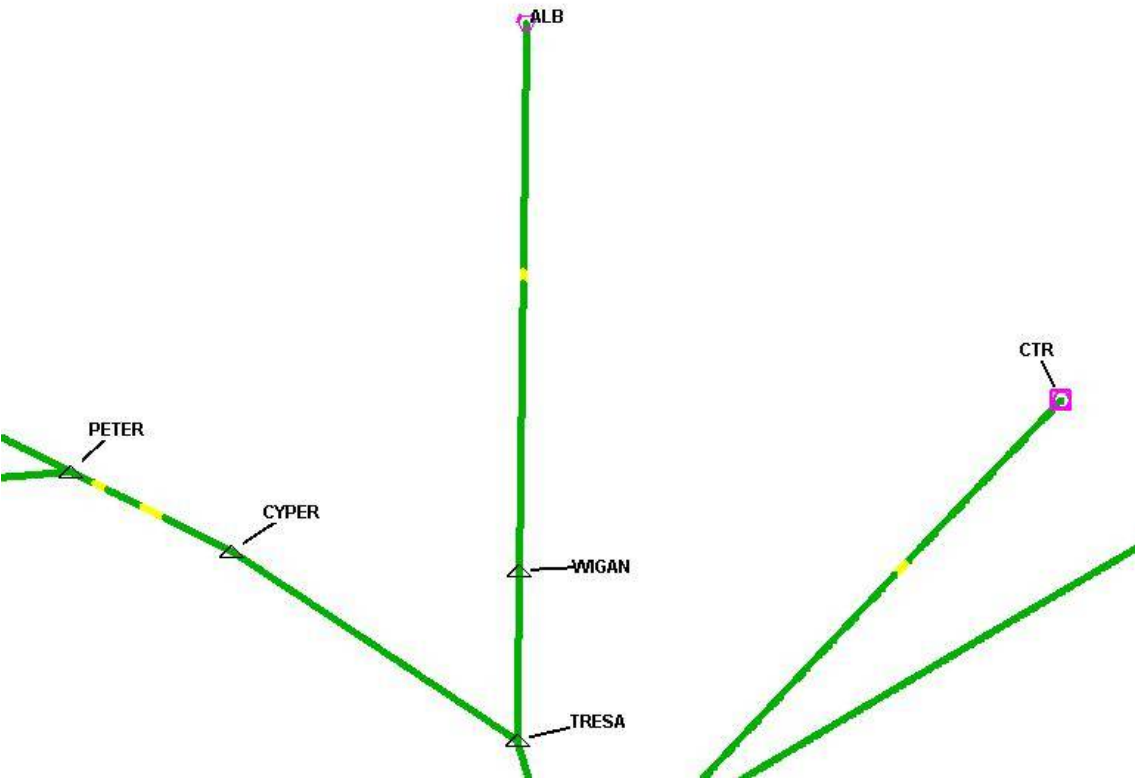
DME DME Assessment Results for KLGA1 path NOBBI_KNUXX

Graphic Depiction 2



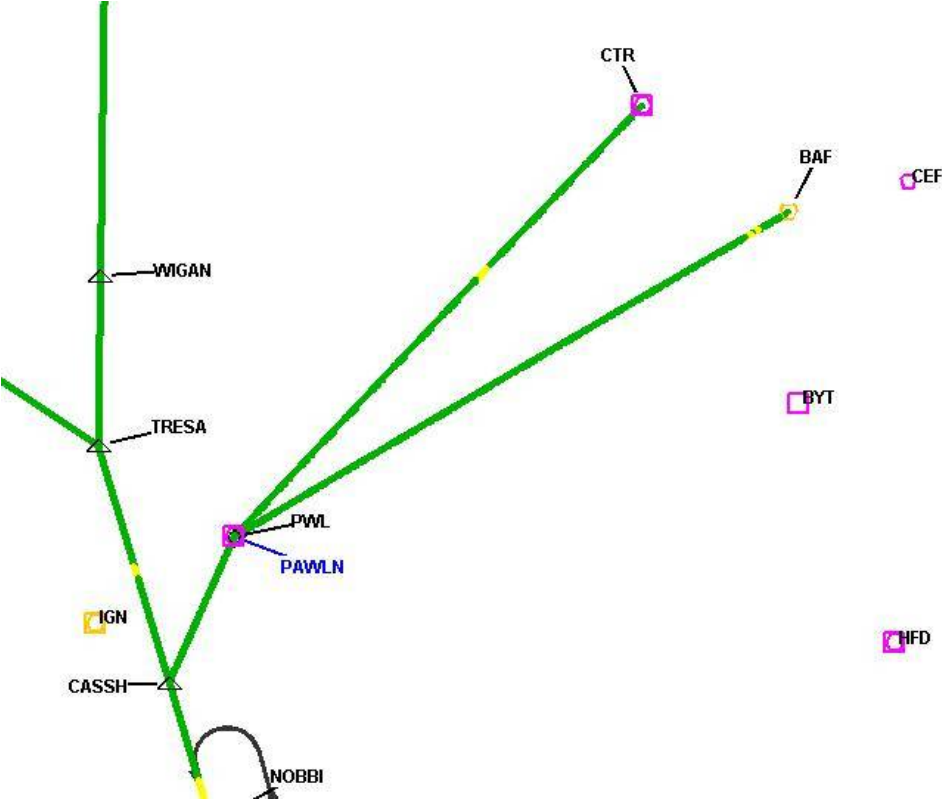
DME DME Assessment Results for KLGA1 path NOBBI_KNUXX

Graphic Depiction 3



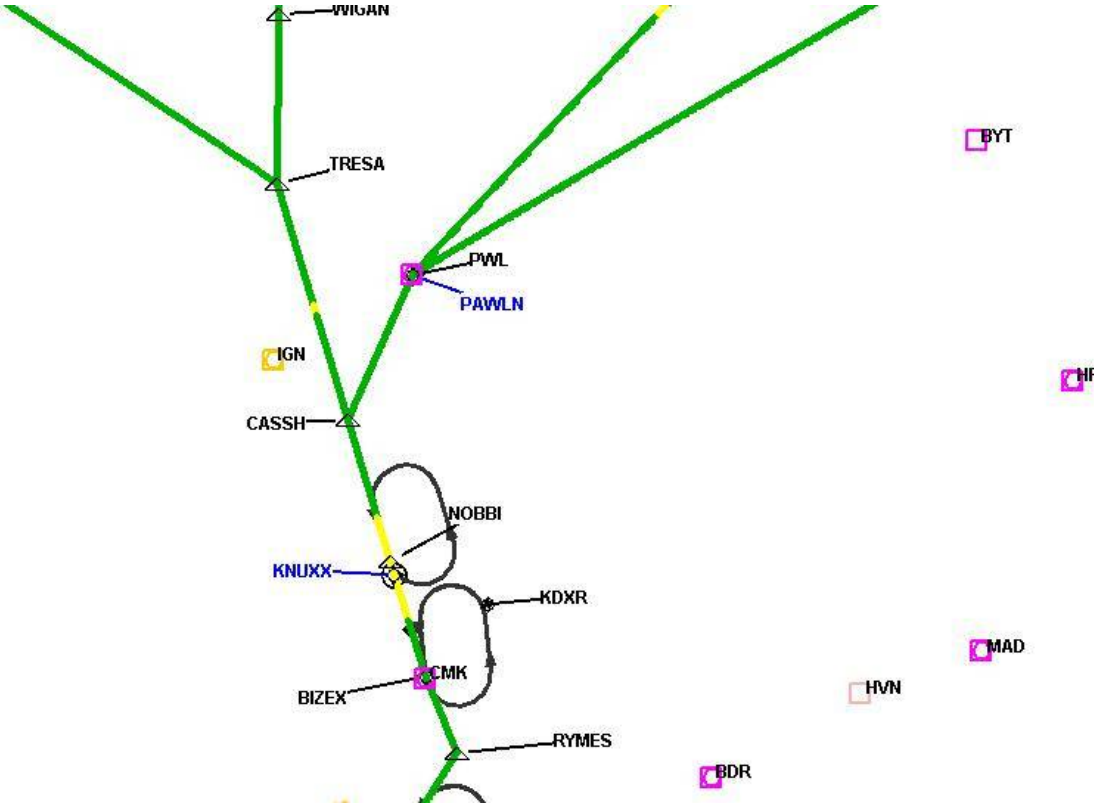
DME DME Assessment Results for KLGA1 path NOBBI_KNUXX

Graphic Depiction 4



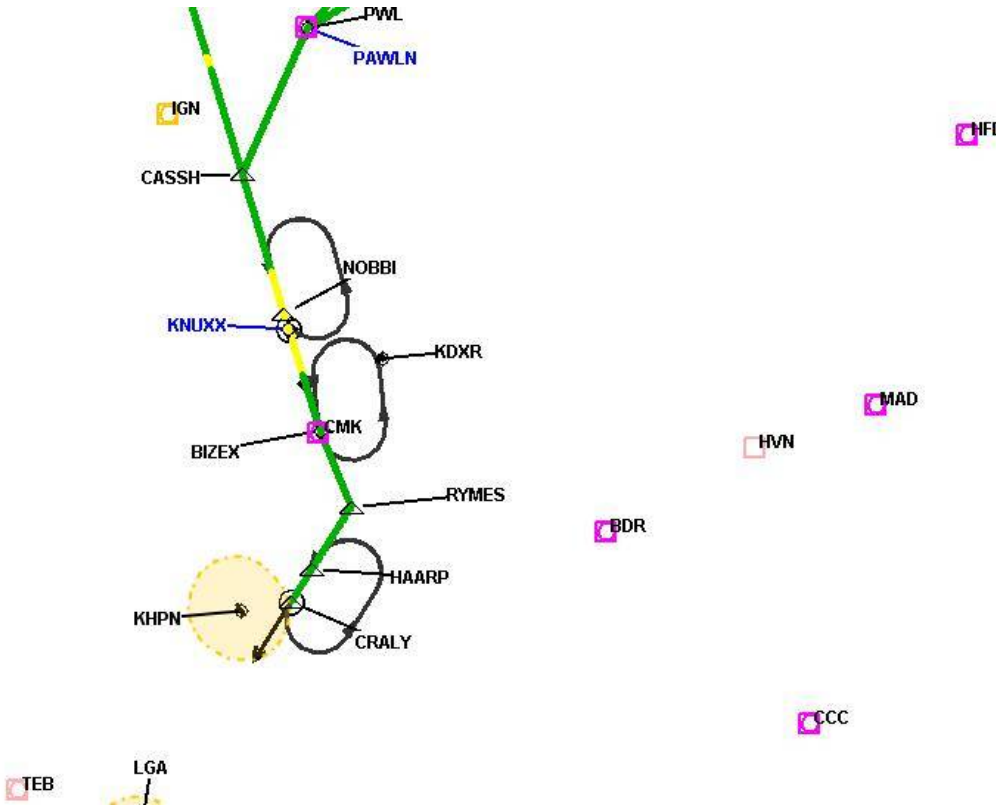
DME DME Assessment Results for KLGA1 path NOBBI_KNUXX

Graphic Depiction 5



DME DME Assessment Results for KLGA1 path NOBBI_KNUXX

Graphic Depiction 6



DME DME Assessment Results for KLGA1 path RAHKS_PETER

Results Summary

Flyability:	Completed
DME/DME:	Completed - No Critical DMEs
Name:	David C-CTR Cook
Project File:	C:\Users\David C-CTR Cook\Documents\TARGETS WORK\DME-DME WORK\11-27-2025 PUB\KLGA NOBB11 (RNAV) STAR\KLGA NOBB11 (RNAV) STAR DME DME_20240724.tgs
Output File:	C:\Users\David C-CTR Cook\Documents\TARGETS WORK\DME-DME WORK\11-27-2025 PUB\KLGA NOBB11 (RNAV) STAR\KDXR [IFPA] KLGA1 20240724_1459 EDT\RAHKS_PETER\KDXR KLGA1 RNAV STAR RAHKS PETER 20240724_1459 EDT.pdf
Procedure Name:	KLGA1
Software: DmeDmePlugin:	7.3.3
Date/Time:	07/24/2024 14:59 EDT
Databases:	MITRE 3DEP 3 arcsec

Failures

No Failures

Warnings

No Warnings

Informational

No Informational

Notes For Flight Check

None

Flight Plan

Name	Type	Lat/Lon	Altitude (ft)	VNAV Mode	Ground Speed (kts)	Turn Type	Leg Type
RAHKS	WP	N42° 27' 59.2800", W075° 14' 21.6800"	11000	VNAV	200	FLY_BY	TF
PETER	WP	N42° 12' 18.9300", W074° 31' 50.2500"	10000	VNAV	200	FLY_BY	TF

Flyability

Flight Type:	RNAV_STAR
Selected Airport:	KDXR [IFPA]
Climb Gradient:	None assigned
Speeds:	200 Ground Speed to 11000 FT
	240 Ground Speed to 18000 FT
	260 Ground Speed to 24000 FT
	340 Ground Speed above 24000 FT
Descent During a Turn:	Allowed
VNAV Mode:	Flight Plan

DME DME Assessment Results for KLGA1 path RAHKS_PETER

DME/DME	
RNP:	RNP 2
Flight Mode:	Manual
Line of Sight (DTED Level 0 Max):	Evaluated
Inertial Drift:	Enabled
Initial Drift:	0.558 NM
INS Drift Rate:	8.0 NM/Hour
Range Mode:	OSV
RNP Edges:	Evaluated
Min DME Range:	3.0 NM
DME Types:	DME, VOR-DME, VORTAC, TACAN
DME Include Angles:	30 to 150
Critical DMEs:	Not Allowed
DoD Facilities:	Not included
Foreign Facilities:	Not included
High DMEs:	Included
Low DMEs:	Included
Terminal DMEs:	Included
Flight Check DMEs:	Not selected
Higher Altitudes:	Not Evaluated
Near Maximum Altitude:	Not Evaluated
Automatic ESVs:	Enabled
Disabled DMEs:	None

DME/DME (Continued)										
DMEs Used										
#	Name	Lat/Lon	MAGVAR	Range	Type	Source	Critical	Status	Time	Distance
1	HNK	N42° 03' 47.0050", W075° 18' 58.6240"	11.0 W	130	H	IFPA	NO	Enabled		
2	HUO	N41° 24' 34.8718", W074° 35' 29.7393"	11.0 W	130	H	IFPA	NO	Enabled		
3	GGT	N42° 47' 20.2410", W075° 49' 36.2900"	11.0 W	40	L	IFPA	NO	Enabled		
4	RKA	N42° 27' 58.7900", W075° 14' 21.2210"	11.0 W	40	L	IFPA	NO	Enabled		
5	UCA	N43° 01' 35.4510", W075° 09' 52.2790"	-0.0 E	40	L	IFPA	NO	Enabled		
6	DNY	N42° 10' 41.8100", W074° 57' 24.9860"	11.0 W	40	L	IFPA	NO	Enabled		

Flight Check DME Selection						
Distance [NM]	Selected DMEs					Alternate
0.0	HNK [IFPA]	GGT [IFPA]	UCA [IFPA]	DNY [IFPA]		
3.1	HNK [IFPA]	GGT [IFPA]	UCA [IFPA]	DNY [IFPA]	RKA [IFPA]	
3.3	HNK [IFPA]	GGT [IFPA]	UCA [IFPA]	DNY [IFPA]		
3.6	RKA [IFPA]	HNK [IFPA]	GGT [IFPA]	UCA [IFPA]	DNY [IFPA]	
6.4	RKA [IFPA]	HNK [IFPA]	GGT [IFPA]	DNY [IFPA]		
7.0	RKA [IFPA]	HNK [IFPA]	DNY [IFPA]			
32.9	RKA [IFPA]	HNK [IFPA]				
33.3	HUO [IFPA]	DNY [IFPA]	HNK [IFPA]	RKA [IFPA]		

Inertial Drift Segments			
#	Start Location	End Location	Length [NM]

DME DME Assessment Results for KLGA1 path RAHKS_PETER

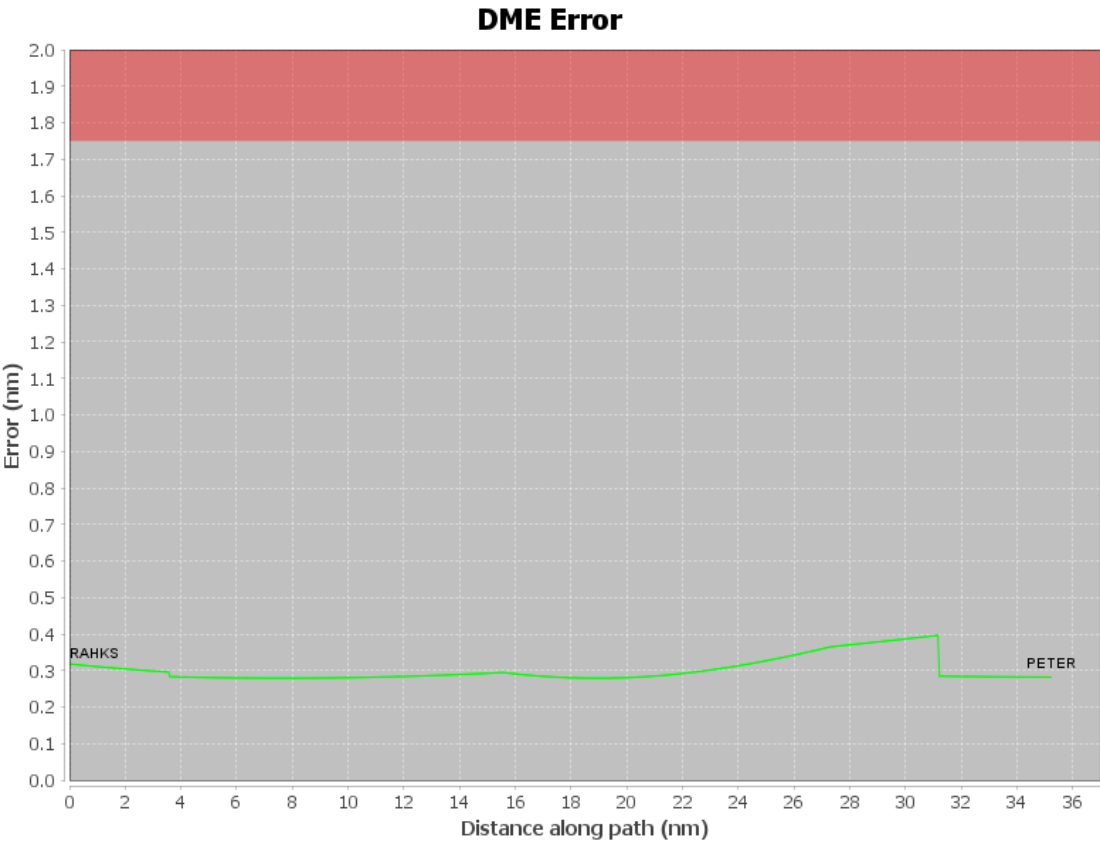
Available DMEs by Waypoints			
Waypoint Before	Waypoint After	DME List	Suggested DMEs
RAHKS	PETER	HNK [IFPA], HUO [IFPA], GGT [IFPA], RKA [IFPA], UCA [IFPA], DNY [IFPA]	

User Data Files

#	File Name
1	New Analysis.udt
2	UserDMEsKHPN [IFPA] VALRE1 RNAV STAR_20240724_0747 EDT.udt
3	UserDMEsKLGA [IFPA] VADDR1 RNAV STAR_20240723_1047 EDT.udt

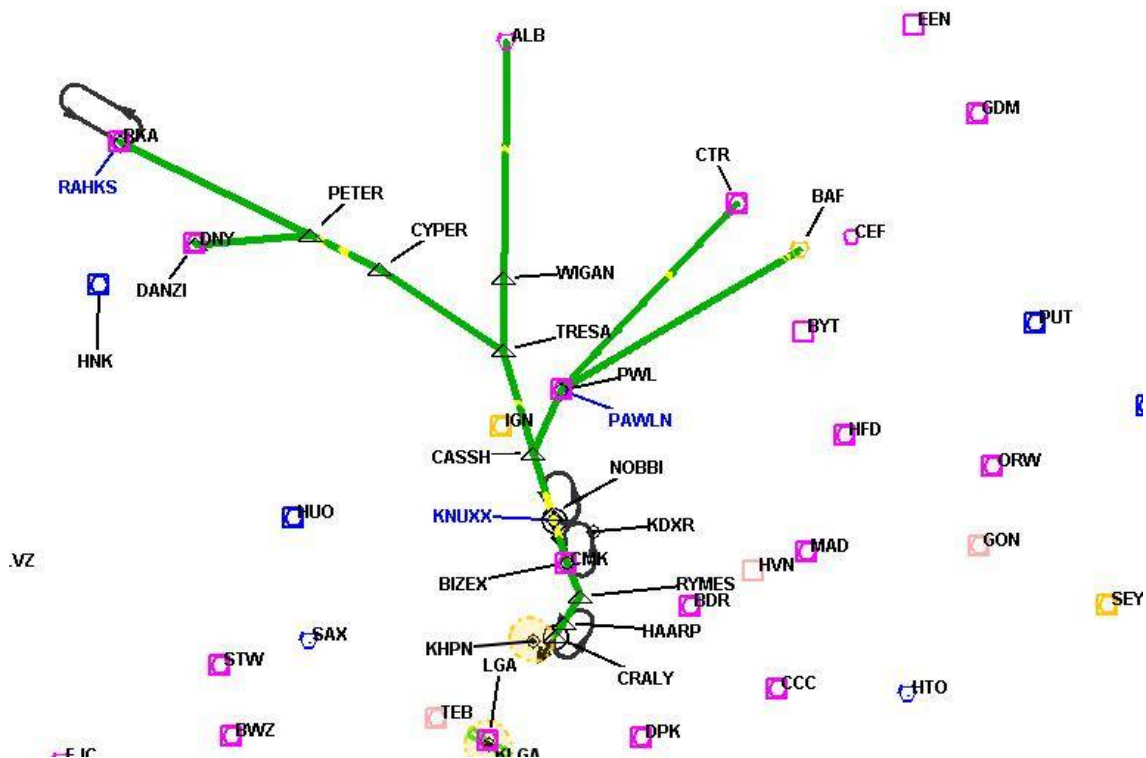
User DMEs

#	Name	Lat/Lon	MAGVAR	Range	Elevation [ft]	Frequency	Replaces	Status
1	UDT ESV CAM CAM [IFPA]	N42° 59' 39.4398", W073° 20' 38.4681"	14.0 W	40	1490	115.0	UDT ESV CAM	
ESV:		Bearing [True]: 186.0° to 236.0° Bearing [Mag]: 200.0° to 250.0°				Arc Distance: Out to 65.0 NM Altitude: 4900.0 to 18000.0 ft		
2	UDT ESV GDM GDM [IFPA]	N42° 32' 45.3150", W072° 03' 29.4776"	14.0 W	40	1279.6	116.95	UDT ESV GDM	
ESV:		Bearing [True]: 266.0° to 281.0° Bearing [Mag]: 280.0° to 295.0°				Arc Distance: Out to 83.0 NM Altitude: 7900.0 to 19300.0 ft		
3	ETX [IFPA] ETX [IFPA]	N40° 34' 51.7405", W075° 41' 02.5085"	9.0 W	40	741.7	110.2	ETX [IFPA]	
ESV:		Bearing [True]: 17.0° to 22.0° Bearing [Mag]: 26.0° to 31.0°				Arc Distance: Out to 106.0 NM Altitude: 8700.0 to 18800.0 ft		
4	UDT ESV SAX SAX [IFPA]	N41° 04' 03.1486", W074° 32' 17.9094"	11.0 W	130	1399.5	115.7	UDT ESV SAX	
ESV:		Bearing [True]: 24.0° to 67.0° Bearing [Mag]: 35.0° to 78.0°				Arc Distance: Out to 64.0 NM Altitude: 4500.0 to 12500.0 ft		
5	UDT ESV HUO HUO [IFPA]	N41° 24' 34.8718", W074° 35' 29.7393"	11.0 W	130	1300.3	116.1	UDT ESV HUO	
ESV:		Bearing [True]: 359.0° to 69.0° Bearing [Mag]: 10.0° to 80.0°				Arc Distance: Out to 65.0 NM Altitude: 6900.0 to 15900.0 ft		
6	UDT ESV MAD MAD [IFPA]	N41° 18' 49.9000", W072° 41' 31.9300"	13.0 W	40	216.3	110.4	UDT ESV MAD	
ESV:		Bearing [True]: 317.0° to 7.0° Bearing [Mag]: 330.0° to 20.0°				Arc Distance: Out to 85.0 NM Altitude: 7000.0 to 18000.0 ft		
7	UDT ESV CCC CCC [IFPA]	N40° 55' 46.6278", W072° 47' 55.8897"	13.0 W	130	84.7	114.55	UDT ESV CCC	
ESV:		Bearing [True]: 317.0° to 7.0° Bearing [Mag]: 330.0° to 20.0°				Arc Distance: Out to 75.0 NM Altitude: 4900.0 to 14600.0 ft		
8	UDT ESV HFD HFD [IFPA]	N41° 38' 27.9769", W072° 32' 50.7048"	13.0 W	40	849.1	114.9	UDT ESV HFD	
ESV:		Bearing [True]: 277.0° to 323.0° Bearing [Mag]: 290.0° to 336.0°				Arc Distance: Out to 95.0 NM Altitude: 6900.0 to 18000.0 ft		



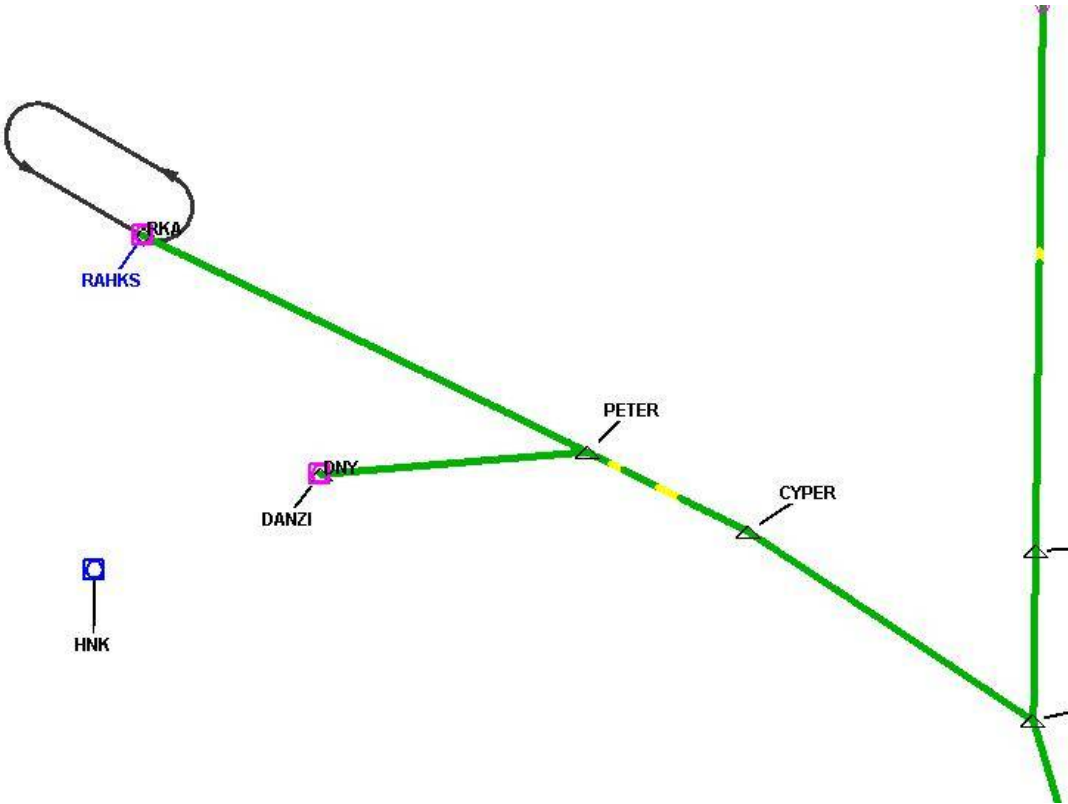
DME DME Assessment Results for KLGA1 path RAHKS_PETER

Graphic Depiction 1

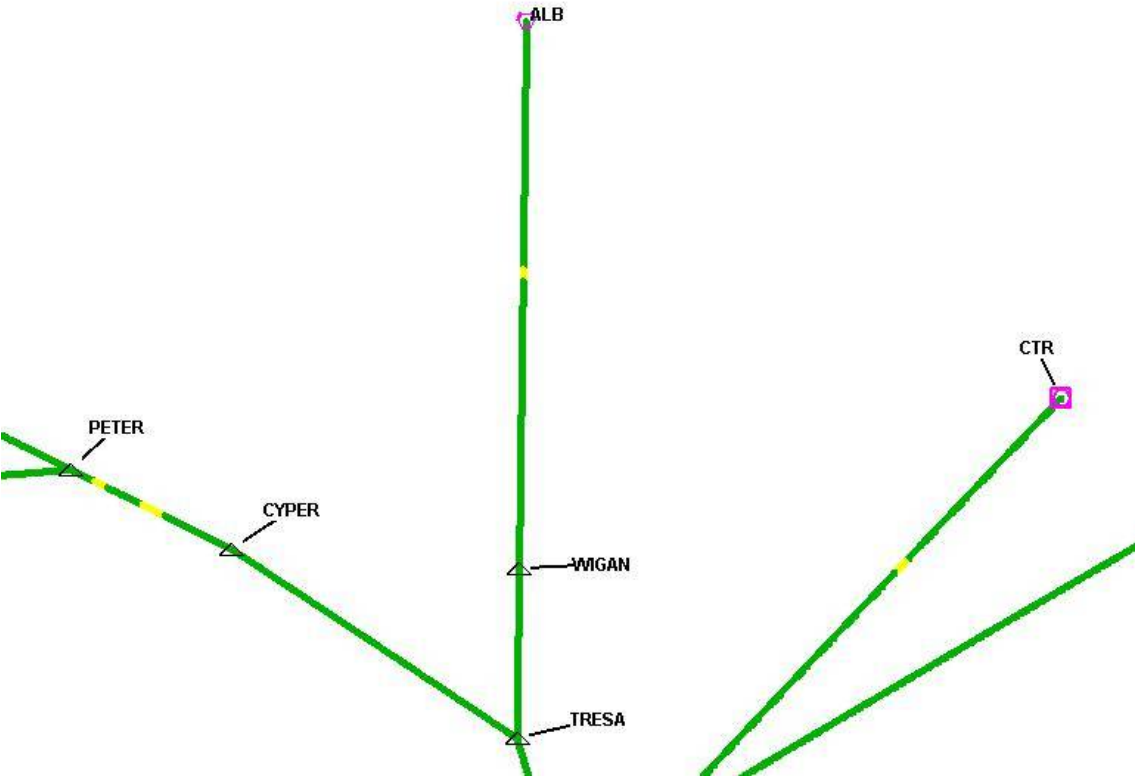


DME DME Assessment Results for KLGA1 path RAHKS_PETER

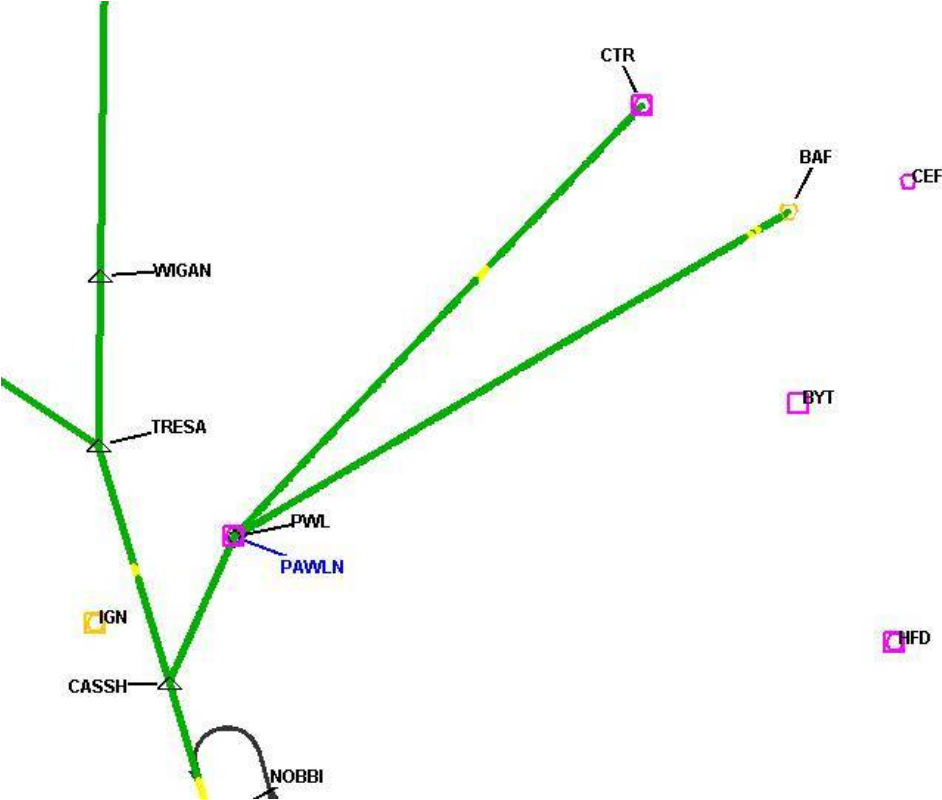
Graphic Depiction 2



Graphic Depiction 3

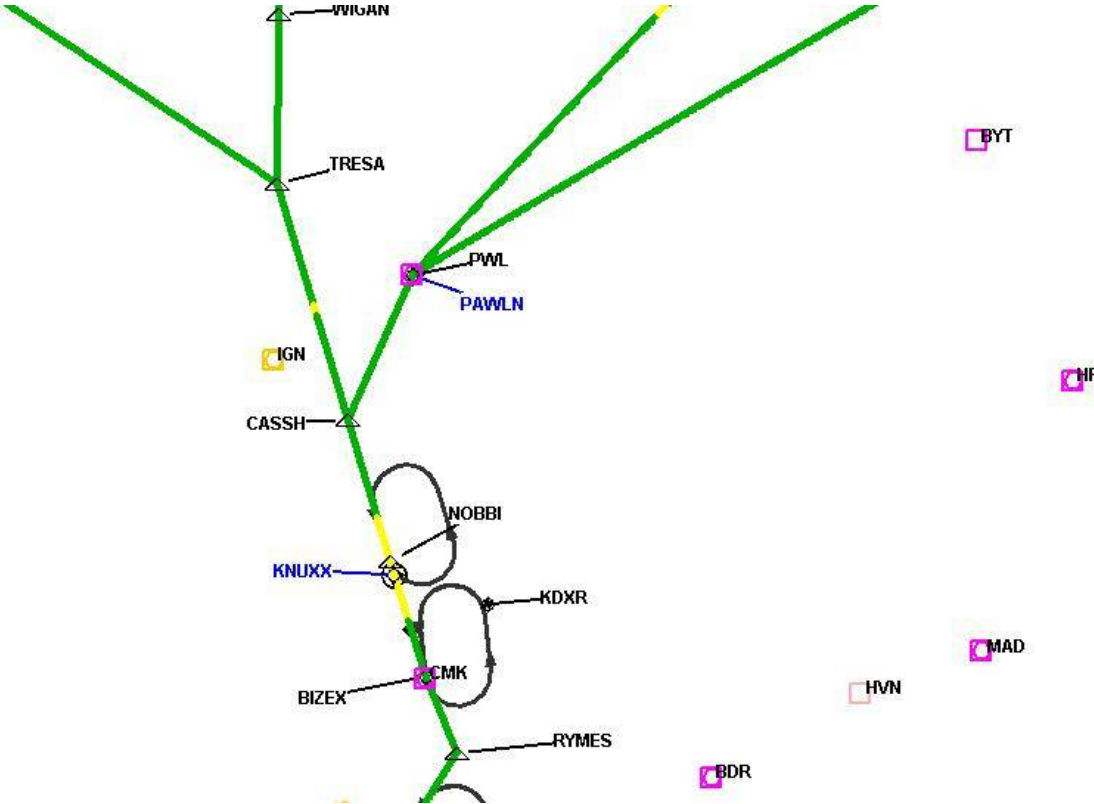


Graphic Depiction 4



DME DME Assessment Results for KLGA1 path RAHKS_PETER

Graphic Depiction 5



DME DME Assessment Results for KLGA1 path RAHKS_PETER

Graphic Depiction 6

