

RNAV (RNP) Z RWY 6, AMDT 1

5/16/2023

PRB RESULTS: RETURNED PRE-PRB

V1 IS BEING RETURNED PRE-PRB FOR THE FOLLOWING:

8260-1 READS RNAV (GPS) X RWY 6 - PROCEDURE PACKAGE IS FOR RNAV (RNP) Z RWY 6

Corrected form located and placed in file.

Eric. N. Suski,
Manager , AJVA-431
5/16/23

Flight Procedures Cover Page	Task Action: FLIGHT CHECK	Task Type: IAP	Estimated Chart Date: 08/10/2023	APWS Task ID: FAE34A13AA1F4853A07AA19F707DC641	APWS Project ID: 3EB2695E7D37400EA5472BF81BAA0033
Procedure: RNAV (RNP) Z RWY 6 AMDT 1		Enroute: NO	Specialist: Mccartney, Michael		Agreement Number:
Airport ID: KTEB			Airport City: TETERBORO		State: NJ
Facility ID:	Facility Type:	Flight Inspection Remark Type: New FC Slot			
<div>Procedure Comments:</div> <div>MISSED APPROACH REDESIGNED TO DECONFLICT TRAFFIC FROM N90 AREA AIRSPACE.</div> <div>WAIVER (1): MAXIMUM ALTITUDE RESTRICTION IN THE MISSED APPROACH SEGMENT.</div> <div>CONTACT ERIC SUSKI: AJV-A431, 405-954-7331</div> <div><div>QUALITY 9 CHECKED</div><div><div>QUALITY 42 CHECKED</div><div>Digitally signed by SEAN BARBEE May 08, 2023</div></div></div>					

FIPC BASIC FORM							
PROCEDURE: RNAV (RNP) Z RWY 6 AMDT 1			AIRPORT NAME: TETERBORO		AIRPORT ID: KTEB	SPECIAL CONTROL NO: YG-05-128-23	
FAC ID: KTEB06.01Z		CITY: TETERBORO			ST: NJ	ORIG CHART DATE: 08/10/2023	
DFL TYPE: PROC/P	THIRD PARTY: <input type="checkbox"/> YES	EST. TIME ON SITE: 0.4	REIMB. NUMBER:		PTS TASK ID:		
PREFLIGHT NOTES							
REVIEWER:					DATE:		
COMMENTS:					CHECK ONE:		
					<input type="checkbox"/> FLT CK REQ <input type="checkbox"/> NFCR <input type="checkbox"/> REJECT		
							YES
					CPV COMPLETE?		X
PROCEDURE RESULTS							
INSPECTION DATE: 06/29/2023		CREW #: VN137	N #: N70	INSTRUMENT PROCEDURE STATUS: <input checked="" type="checkbox"/> SAT <input type="checkbox"/> SAT W/CHANGES <input type="checkbox"/> UNSAT		ARINC CODING: <input checked="" type="checkbox"/> SAT <input type="checkbox"/> SAT/GOLD <input type="checkbox"/> UNSAT	
FLIGHT INSPECTOR SIGNATURE: bob s pressler @ 06/29/2023 15:07			PRINTED NAME: PRESSLER, ROBERT STEPHEN				NOTAM INITIATED? <input type="checkbox"/> YES <input checked="" type="checkbox"/> NO
FLIGHT INSPECTOR REMARKS: SAT.							
IN-FLIGHT OBSTACLE REPORT							
OBSTRUCTION ID #:	COORDINATES OR LOCATION:		GNSS ALTITUDE (MSL):		BAROMETRIC ALTITUDE (MSL):		HEIGHT ABOVE GROUND LEVEL:

1. FLIGHT PROCEDURE IDENTIFICATION:

Teterboro, New Jersey
Teterboro Airport (TEB)
RNAV(RNP) Z RWY 6

2. WAIVER REQUIRED AND APPLICABLE STANDARD:

The missed approach incorporates a maximum altitude restriction that is lower than the clearance limit altitude. Order 8260.3E paragraph 2-8-1 states, in part, "The missed approach procedure must be simple, specify a charted missed approach altitude (altitude at clearance limit), and a clearance limit fix/facility. When required by obstacles or deemed operationally advantageous, the missed approach may also specify an interim "climb-to" altitude to identify a turn point. Any other interim altitude restriction is not permitted."

3. REASON FOR WAIVER (JUSTIFICATION FOR NONSTANDARD TREATMENT):

Air traffic control requests a maximum altitude restriction/hold-down altitude of 2000 MSL at TEBLE to ensure separation from overhead traffic landing runway 13 into LaGuardia at 3000 feet.

4. EQUIVALENT LEVEL OF SAFETY PROVIDED:

1. No penetrations of the 40:1 surface exist between the MAP and TEBLE at the hold-down altitude of 2000 feet.
2. The controlling obstacle for the hold-down segment is an AAO with a height of 801 feet MSL (405642.00N/0741130.00W). Applying 1000 feet of ROC + rounding 801 feet to 900 feet = 1900 feet of altitude required. Greater than standard ROC is achieved within the hold-down segment by requiring aircraft to cross TEBLE at 2000 feet MSL.
3. The procedure is RADAR REQUIRED to provide radar monitoring of aircraft executing the missed approach.

5. ALTERNATIVE ACTIONS DEEMED NOT FEASIBLE:

1. Publishing 2 variants of each published approach to RWY 6 in order to have 2 separate published missed approach procedures, adding to complexity, possible confusion, and increased ground to air communications.
2. Coding an alternate missed approach for each RWY 6 approach, waiver required and users would have to pay to upgrade FMS to allow for 2 coded missed approaches.
3. Air traffic metering of flights into Teterboro and LaGuardia airports would result in excessive arrival and departure delays, as well as capacity reduction for both airports.

6. COORDINATION WITH USER ORGANIZATIONS (SPECIFY):

7. SUBMITTED BY:

DATE	OFFICE IDENTIFICATION	TITLE
03/07/23	AJV-A430	MANAGER

SIGNATURE

Digitally signed by
ERIC N SUSKI
May 16, 2023

8. AFS ACTIONS:

☐ APPROVED ☐ DISAPPROVED ☐ NOT REQUIRED

COMMENTS:

DATE	ROUTING SYMBOL	SIGNATURE
------	----------------	-----------

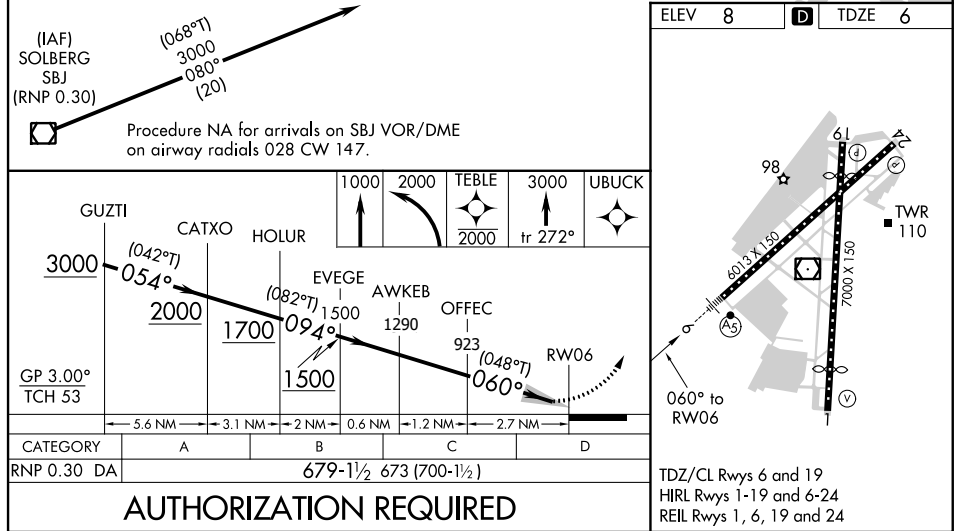
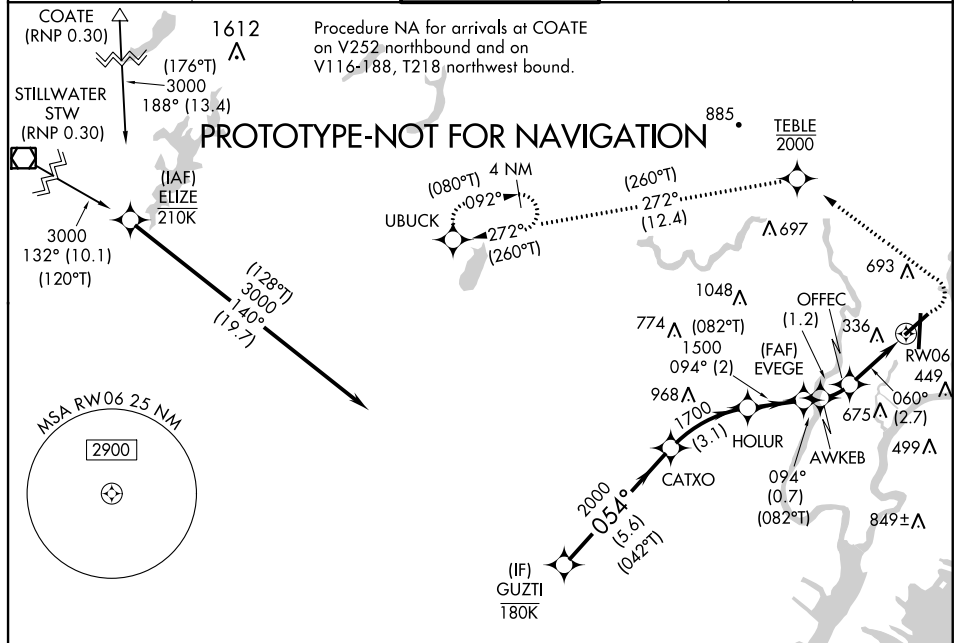
APP CRS	Rwy Idg	6013
060°	TDZE	6
	Apt Elev	8

RNAV (RNP) Z RWY 6

TETERBORO (TEB)

RNP AR APCH - GPS. RADAR Required.	MALSR	MISSED APPROACH: Climb to 1000, then climbing left turn to 2000 direct TEBLE, cross TEBLE at or below 2000, then climb to 3000 on track 272° to UBUCK and hold.
▼ For uncompensated Baro-VNAV systems, procedure NA below -13°C or above 54°C. For inoperative ALS from increase RNP 0.30 all Cals visibility to 1/8.		

D-ATIS 114.2 132.85	NEW YORK APP CON 127.6 379.9	TETERBORO TOWER 119.5	GND CON 121.9	CLNC DEL 128.05	CPDLC
------------------------	---------------------------------	--------------------------	------------------	--------------------	-------



TETERBORO, NEW JERSEY

OLD

20366

APP CRS	Rwy Idg	6013
060°	TDZE	6
	Apt Elev	9

RNAV (RNP) Z RWY 6

TETERBORO (TEB)

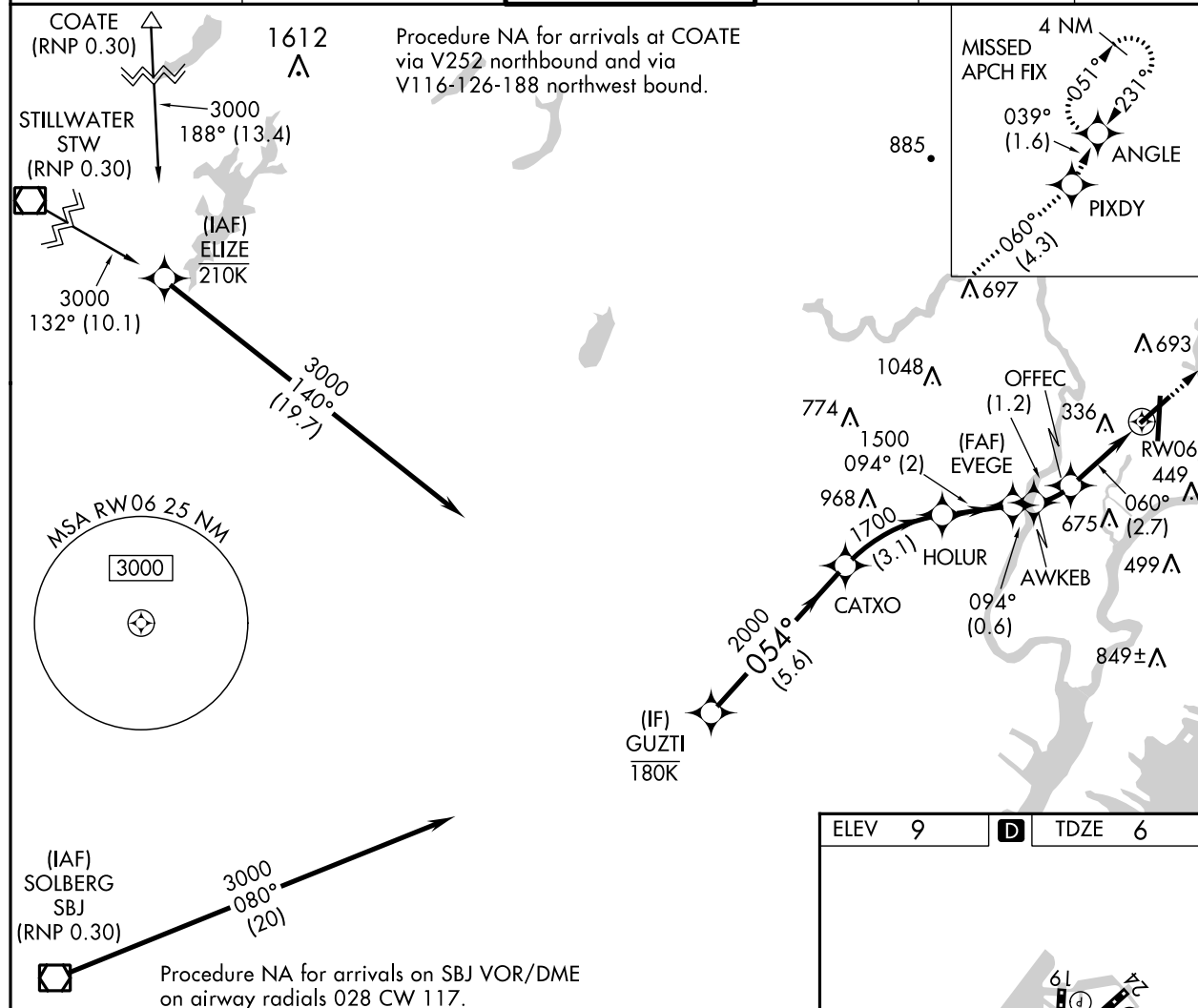
▼ For uncompensated Baro-VNAV systems, procedure NA below -13°C (8°F) or above 54°C (130°F). For inoperative MALSR, increase RNP 0.30 all Cats visibility to 2 1/4. RF required. GPS required.

MALSR



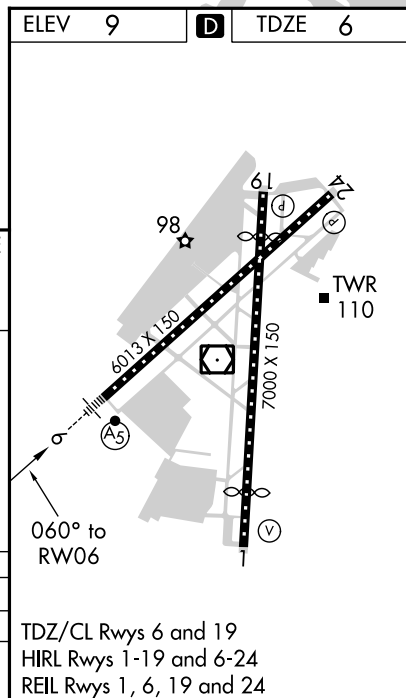
MISSED APPROACH: Climb to 2000 on track 060° to PIXDY and on track 039° to ANGLE and hold.

D-ATIS 114.2 132.85	NEW YORK APP CON 127.6 379.9	TETERBORO TOWER 119.5	GND CON 121.9	CLNC DEL 128.05	CPDLC
-------------------------------	--	---------------------------------	-------------------------	---------------------------	-------



GUZTI	CATXO	HOLUR	EVEC	AWKEB	OFFEC	PIXDY	ANGLE
3000	2000	1700	1500	1304	931	tr 060°	tr 039°
GP 3.00°							
TCH 53							
	5.6 NM	3.1 NM	2 NM	0.6 NM	1.2 NM	2.7 NM	
CATEGORY	A	B	C	D			
RNP 0.30 DA	679-2	673 (700-2)					

AUTHORIZATION REQUIRED



TETERBORO, NEW JERSEY
Orig-C 27JUN13

40° 51'N - 74° 04'W

TETERBORO (TEB)
RNAV (RNP) Z RWY 6

AIRPORT ID: KTEB
AIRPORT NAME: TETERBORO
CITY: TETERBORO
STATE: NJ
PROC. ID: RNAV(RNP) Z RWY 6
AMD# #: AMDT 1
VIEW: FULL PROCEDURE
SCALE: 1:500,000
PAGE 1 OF 2

