

Flight Procedures Cover Page	Task Action: P-NOTAM	Task Type: IAP	Estimated Chart Date: 06/17/2021	APWS Task ID: FA838CA116E54402A47A1DF36192B306	APWS Project ID: 15EEBA00714243C0A2E73C4949521F85
Procedure: RNAV (GPS) RWY 22 AMDT 0B		Enroute: NO	Specialist: Lafferty, James		Agreement Number:
Airport ID: KVIH			Airport City: ROLLA/VICHY		State: MO
Facility ID:	Facility Type:	Flight Inspection Remark Type:			
<p>Procedure Comments:</p> <p>P-NOTAM</p> <p>This Cancels FDC 0/4788</p> <p>Order 8260.3, chapter 2, New Circling Criteria Applied</p> <p>Contact Dave Teffeteller at 202-267-5177</p>					



OLD

ROLLA/VICHY, MISSOURI

AL-510 (FAA)

19227

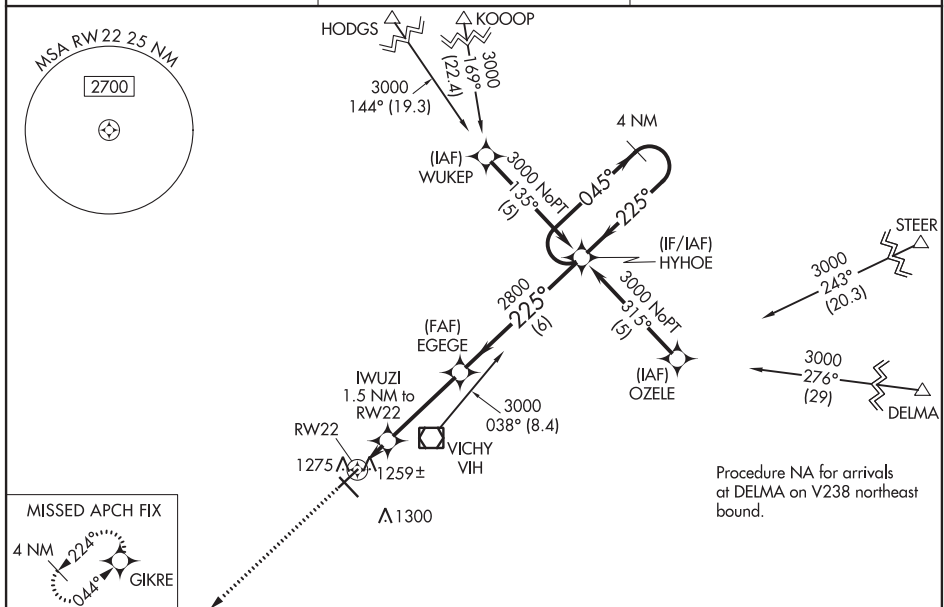
WAAS CH 72719 W22A	APP CRS 225°	Rwy Idg TDZE Apt Elev 5500 1117 1148
--	------------------------	--

RNAV (GPS) RWY 22

ROLLA NATIONAL (VIH)

<p>▽ For uncompensated Baro-VNAV systems, LNAV/VNAV NA below -17°C (2°F) or above 46°C (114°F). DME/DME RNP-0.3 NA.</p> <p>△ NA</p>	<p>MISSED APPROACH: Climb to 2800 direct GIKRE and hold.</p>
---	--

ASOS 119.025	KANSAS CITY CENTER 128.35 284.675	UNICOM 123.0 (CTAF) 0
------------------------	---	---------------------------------



ELEV 1148	TDZE 1117	1548 △
<p>225° to RW22</p> <p>0.5% UP</p> <p>5500 X 100</p> <p>5500 X 100</p> <p>MIRL Rwy 13-31 and 4-22 0</p>		
<p>2800 GIKRE</p> <p>* LNAV only</p> <p>IWUZI 1.5 NM to RW22</p> <p>RW22</p> <p>EGECE 2800</p> <p>HYHOE 4 NM Holding Pattern</p> <p>045° → 3000</p> <p>← 225°</p> <p>GP 3.00°</p> <p>TCH 52</p> <p>1.5 3.6 NM 6 NM</p>		
CATEGORY	A	B C D
LPV DA	1367-3/4	250 (300-3/4)
LNAV/VNAV DA	1529-1 1/2	412 (400-1 1/2)
LNAV MDA	1520-1 403 (400-1)	1520-1 1/4 403 (400-1 1/4)
CIRCUING	1700-1 552 (600-1)	1700-1 1/2 552 (600-1 1/2) 1700-2 552 (600-2)

ROLLA/VICHY, MISSOURI
Orig-A 12OCT17

38°08'N-91°46'W

RNAV (GPS) RWY 22

ROLLA NATIONAL (VIH)

NC-3, 10 SEP 2020 to 08 OCT 2020

NC-3, 10 SEP 2020 to 08 OCT 2020

