

Flight Procedures Cover Page	Task Action: FLIGHT CHECK	Task Type: IAP	Estimated Chart Date: 11/03/2022	APWS Task ID: FA4827B0CE8E47EFAAE781BA261FCE36	APWS Project ID: E4D46F9F669E4FC5B4A4F718960DFCAB
Procedure: RNAV (GPS) RWY 18 AMDT 1A		Enroute: NO	Specialist: Hill, Casey		Agreement Number:
Airport ID: KVYS			Airport City: PERU		State: IL
Facility ID:	Facility Type:	Flight Inspection Remark Type: New FC Slot			
<div>Procedure Comments: UPDATED HORAH LOCATION</div> <div>NEW LPV CONTROLLER TO RAISE MINIMUS TO CLEAR MISSED APPROACH OBSTACLE</div> <div>CONTACT CASIMIR TABAKA (405) 954-7931</div> <div><div>Digitally signed by CASIMIR L TABAKA Jul 12, 2022</div><div><div>QUALITY 10 CHECKED</div><div>QUALITY 38 CHECKED</div></div></div>					

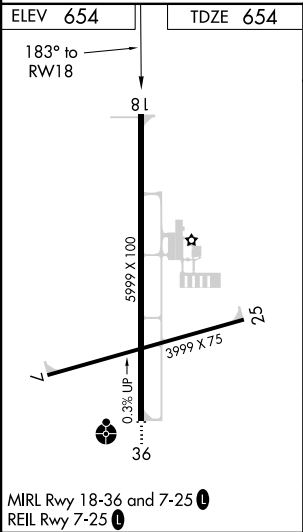
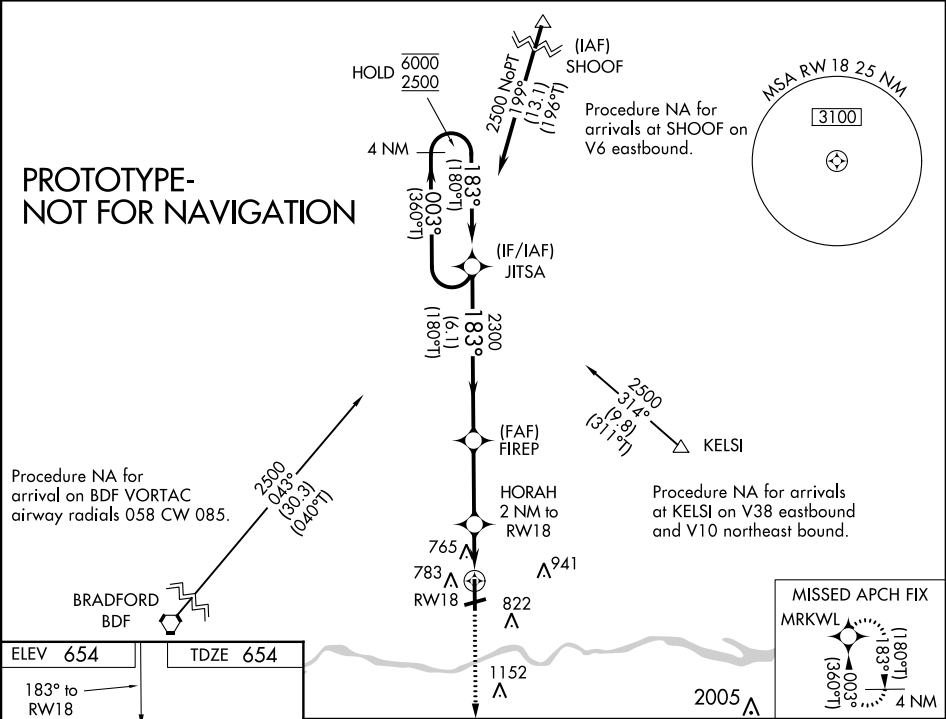
FIPC BASIC FORM							
PROCEDURE: RNAV (GPS) RWY 18 AMDT 1A			AIRPORT NAME: ILLINOIS VALLEY RGNL-WALTER A		AIRPORT ID: KVYS	SPECIAL CONTROL NO: BG-07-207-22	
FAC ID: KVYS18.01		CITY: PERU			ST: IL	ORIG CHART DATE: 11/03/2022	
DFL TYPE: PROC/S	THIRD PARTY: <input type="checkbox"/> YES	EST. TIME ON SITE: 0.4	REIMB. NUMBER:		PTS TASK ID: FA4827B0CE8E47EFAAE781BA261FCE36		
PREFLIGHT NOTES							
REVIEWER:					DATE:		
COMMENTS:					CHECK ONE:		
					<input type="checkbox"/> FLT CK REQ <input type="checkbox"/> NFCR <input type="checkbox"/> REJECT		
							YES
					CPV COMPLETE?		X
PROCEDURE RESULTS							
INSPECTION DATE: 08/31/2022		CREW #: VN285	N #: N77	INSTRUMENT PROCEDURE STATUS: <input checked="" type="checkbox"/> SAT <input type="checkbox"/> SAT W/CHANGES <input type="checkbox"/> UNSAT		ARINC CODING: <input checked="" type="checkbox"/> SAT <input type="checkbox"/> SAT/GOLD <input type="checkbox"/> UNSAT	
FLIGHT INSPECTOR SIGNATURE: michael a greenwood @ 08/31/2022 15:17			PRINTED NAME: GREENWOOD, MICHAEL AARON			NOTAM INITIATED? <input type="checkbox"/> YES <input checked="" type="checkbox"/> NO	
FLIGHT INSPECTOR REMARKS: SAT as Proposed.							
IN-FLIGHT OBSTACLE REPORT							
OBSTRUCTION ID #:	COORDINATES OR LOCATION:		GNSS ALTITUDE (MSL):		BAROMETRIC ALTITUDE (MSL):		HEIGHT ABOVE GROUND LEVEL:

WAAS CH 86937 W18A	APP CRS 183°	Rwy Idg TDZE Apt Elev	5999 654 654
----------------------------------------	------------------------	-----------------------------	-----------------------------------------

RNAV (GPS) RWY 18
ILLINOIS VALLEY RGNL-WALTER A DUNCAN FLD (VYS)

RNP APCH - GPS. ▼ Rwy 18 helicopter visibility reduction below 3/4 SM NA. ▲ For uncompensated Baro-VNAV systems, LNAV/VNAV NA below -16°C or above 54°C.	MISSED APPROACH: Climb to 2500 direct MRKWL and hold.
----------------------------------------------------------------------------------------------------------------------------------------------------------------	-------------------------------------------------------

AWOS-3 120.025	CHICAGO CENTER 123.75 259.1	UNICOM 123.0 (CTAF) 0
--------------------------	---------------------------------------	---------------------------------



2500	MRKWL	HORAH 2 NM to RW18	FIREP 2300	JITSA 2300	4 NM Holding Pattern
1 NM	0.9 NM	3.1 NM	6.1 NM		
CATEGORY	A	B	C	D	
LPV DA		939-1	285 (300-1)		
LNAV/VNAV DA		926-1	272 (300-1)		
LNAV MDA		1020-1	366 (400-1)		
CIRCLING	1120-1 466 (500-1)	1240-1 586 (600-1)	1260-1 3/4 606 (700-1 3/4)	1460-2 1/2 806 (900-2 1/2)	

WAAS CH 86937 W18A	APP CRS 183°	Rwy Idg TDZE 654 Apt Elev 654	5999
----------------------------------------	------------------------	---------------------------------------------------	-------------

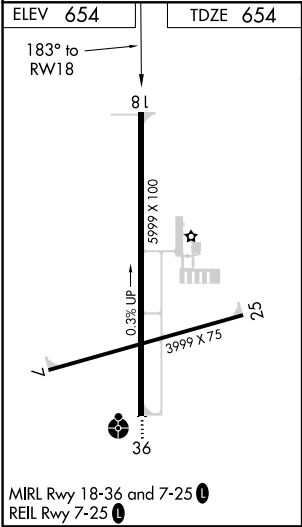
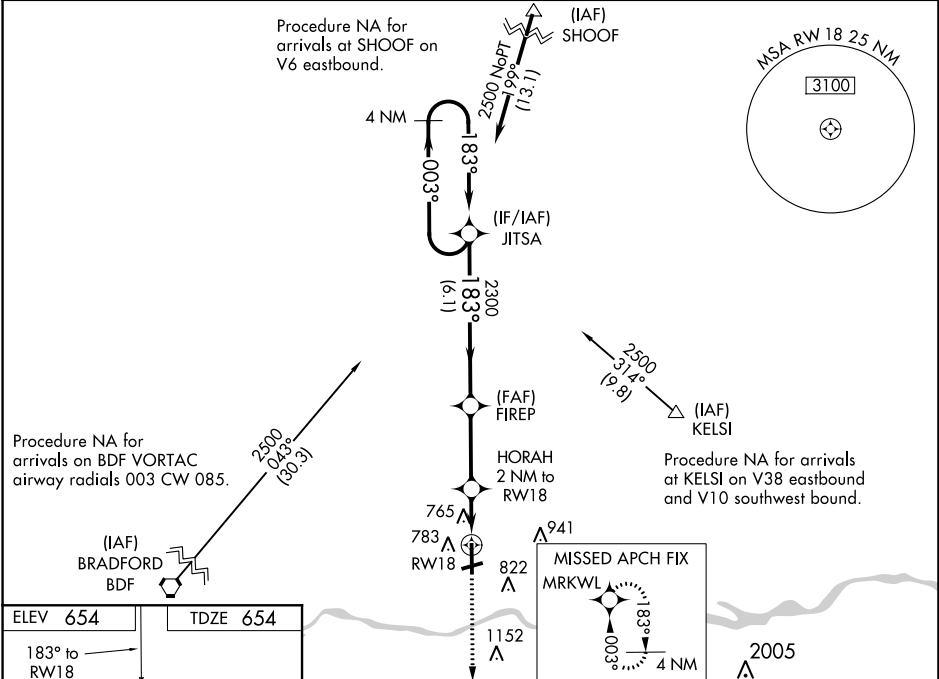
RNAV (GPS) RWY 18

ILLINOIS VALLEY RGNL-WALTER A DUNCAN FLD (VYS)

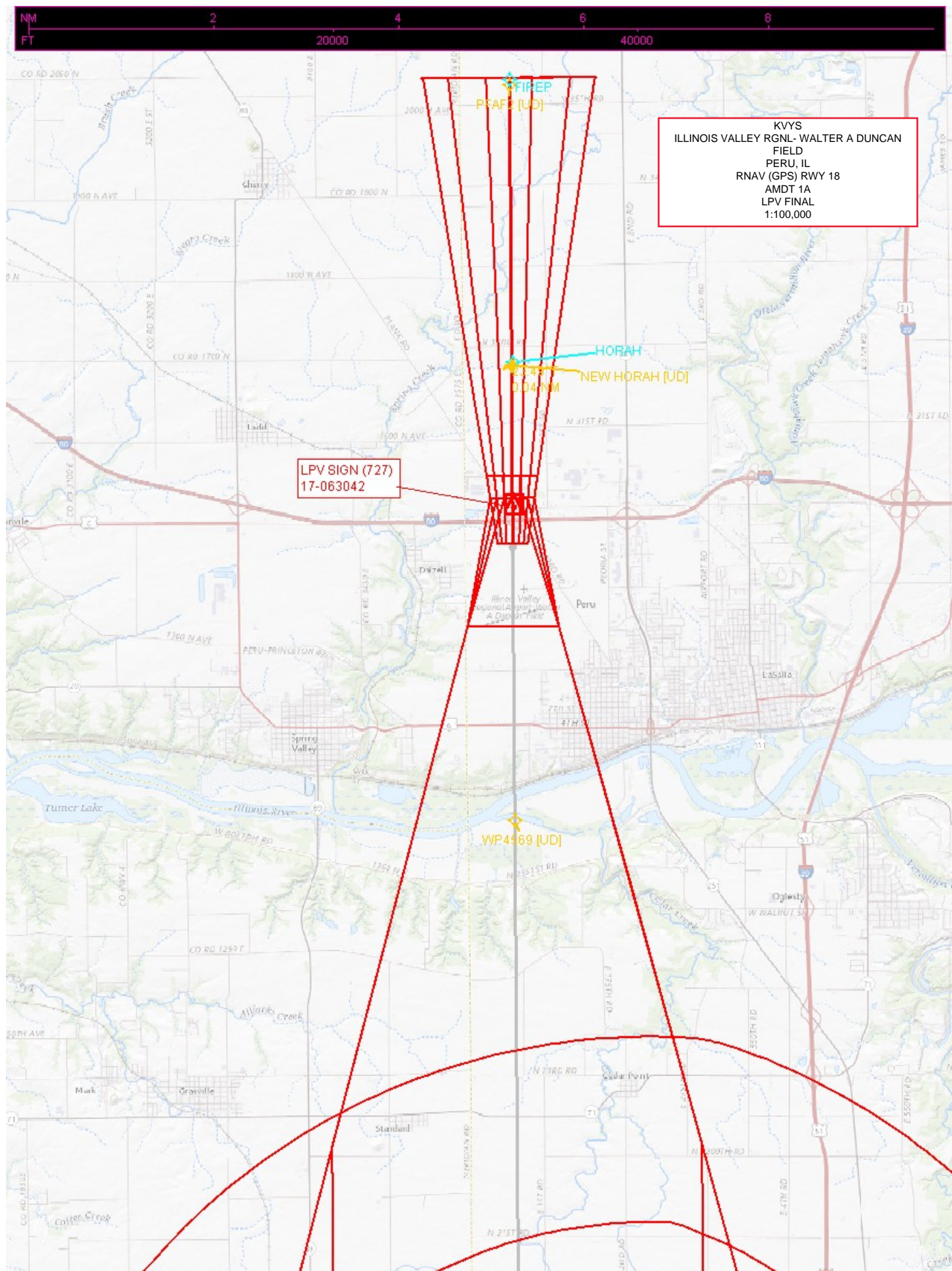
⚠ DME/DME RNP-0.3 NA. When local altimeter setting not received, use Marshall County altimeter setting and increase all DA 62 feet and all MDA 80 feet, increase LNAV Cats C/D visibility to 1½, Circling Cat C visibility to 2 and Circling Cat D visibility to 3. VDP and Baro-VNAV NA with Marshall County altimeter setting. Helicopter visibility reduction below ¾ SM NA.

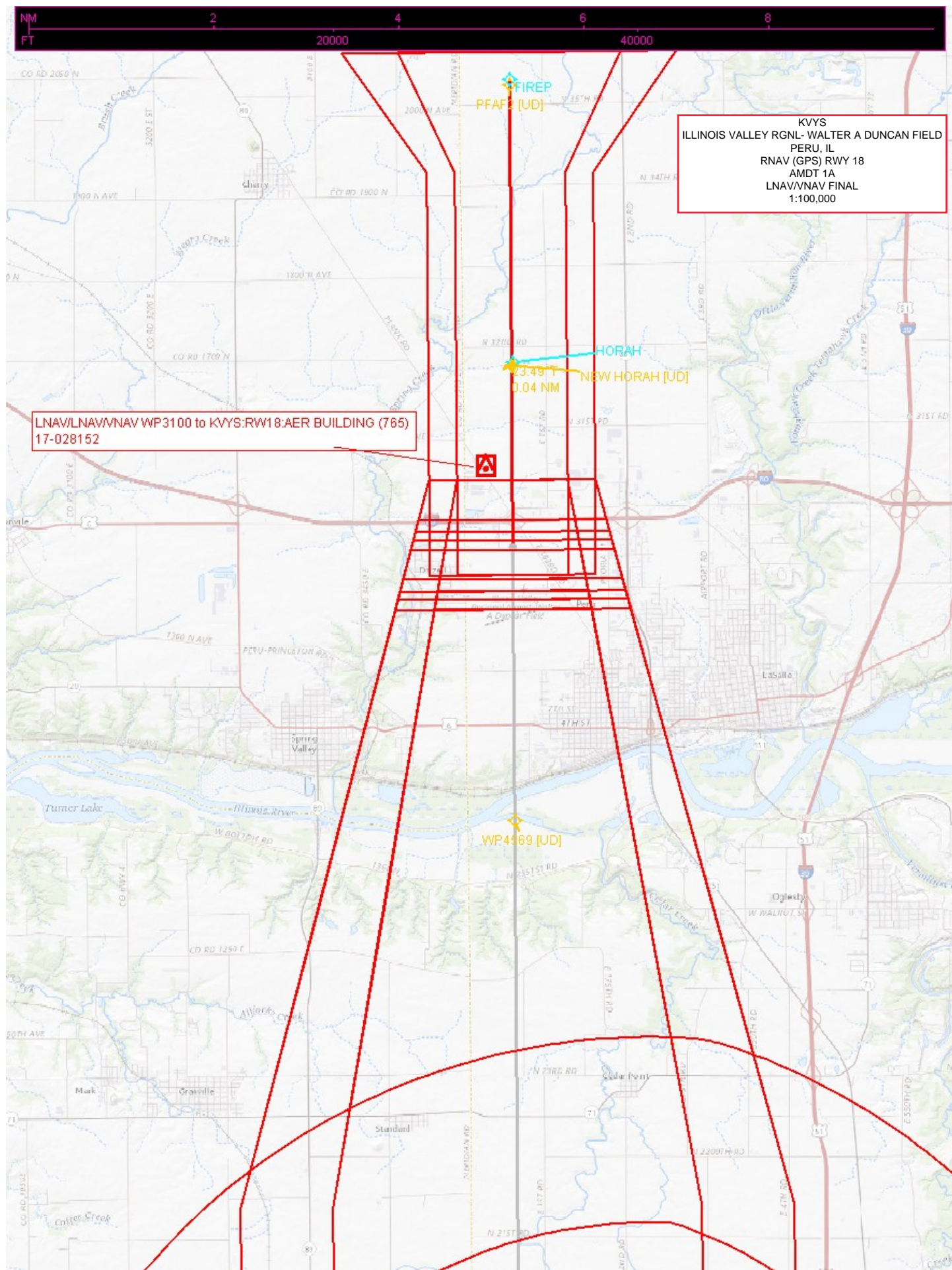
MISSED APPROACH: Climb to 2500 direct MRKWL and hold.

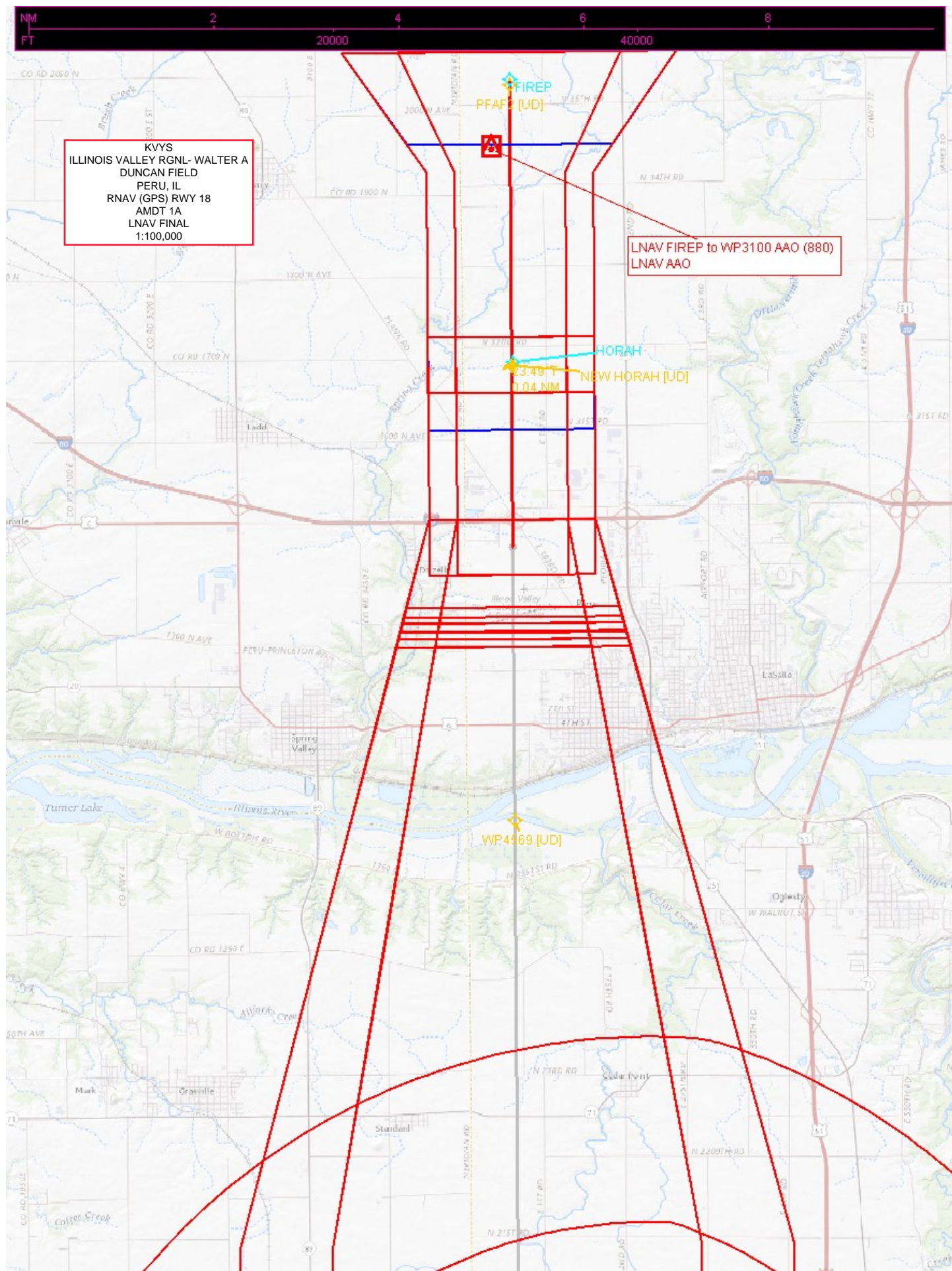
AWOS-3 120.025	CHICAGO CENTER 123.75 259.1	UNICOM 123.0 (CTAF) 0
--------------------------	---------------------------------------	---------------------------------



2500	MRKWL	4 NM	JITSA	4 NM	Holding Pattern
*LNAV only.					
*1 NM to RW18	HORAH 2 NM to RW18	FIREP 2300	183°	003°	2500
			183°		
			2300		GP 3.00° TCH 40
1 NM	1 NM	3 NM	6.1 NM		
CATEGORY	A	B	C	D	
LPV DA		904-1	250 (300-1)		
LNAV/VNAV DA		926-1	272 (300-1)		
LNAV MDA		1020-1	366 (400-1)		
CIRCLING	1120-1 466 (500-1)	1240-1 586 (600-1)	1260-1¾ 606 (700-1¾)	1460-2½ 806 (900-2½)	









KVYS
ILLINOIS VALLEY RGNL- WALTER A
DUNCAN FIELD
PERU, IL
RNAV (GPS) RWY 18
AMDT 1A
CIRCLING
1:100,000

Circling CAT A TANK (810)
17-028118

Circling CAT C TOWER (941)
17-001289

Circling CAT B TOWER (885)
17-000572

Circling CAT D TOWER (1152)
17-000135

