

FIG

RNAV (GPS) RWY 17
SIOUX COUNTY RGNL (SXX)

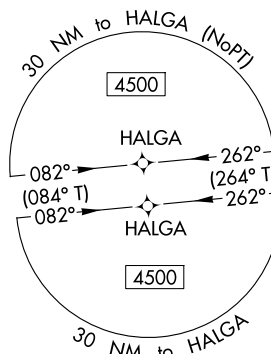
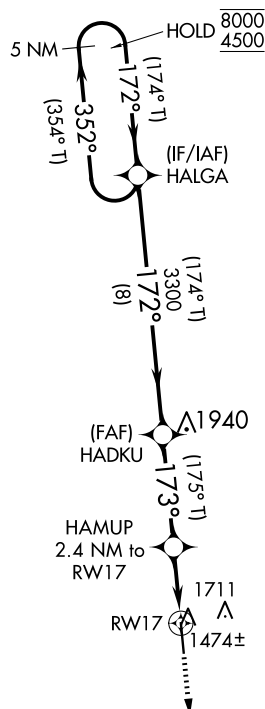
T Baro-VNAV and VDP NA when using LRJ altimeter setting. For uncompensated Baro-VNAV systems, LNAV/VNAV NA below -17°C or above 54°C. When local altimeter setting not received, use LRJ altimeter setting and increase: LPV and LNAV/VNAV to 1718 feet and all visibilities $\frac{1}{8}$ SM; increase all MDAs 60 feet and LNAV visibility Cat C/D $\frac{1}{8}$ SM.

MISSED APPROACH: Climb to 4500 direct SKYLE and hold, continue climb-in-hold to 4500.

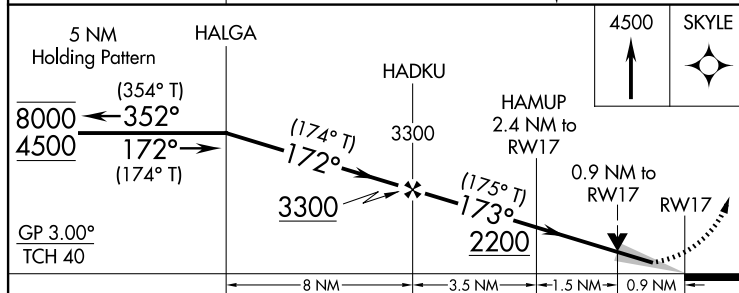
SIOUX CITY APP CON ★
 124.6 307.0


UNICOM
122.7 (CTAF) **L**

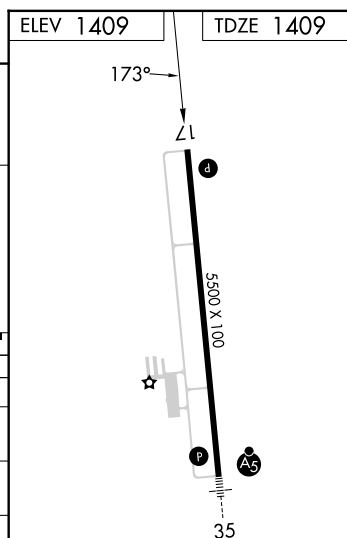
PROTOTYPE: NOT
FOR NAVIGATION



MISSED APCH FIX



CATEGORY	A	B	C	D
LPV DA	1659-3/4 250 (300-3/4)			
LNAV/ VNAV DA	1659-3/4 250 (300-3/4)			
LNAV MDA	1740-1 331 (400-1)			
 CIRCLING	1820-1 411 (500-1)	2080-1 671 (700-1)	2080-2 671 (700-2)	2080-2 1/4 671 (700-2 1/4)



AUTOMATED AL-11316 RNAV (GPS) RWY 17

NC-3

29 APR 2025

COMPILER: CG

REVIEWER:

DBL CHKR:

EFF: FIG

SIoux COUNTY RGnL (SxK)

42°59'N-96°10'W

RNAV (GPS) RWY 17