

Flight Procedures Cover Page	Task Action: FLIGHT CHECK	Task Type: SID	Estimated Chart Date: 02/20/2025	APWS Task ID: F823DF4E3724430F9E0F2C9BBBF18380	APWS Project ID: 7F50D0B892ED400BA8ADDD8A11DB68BC
Procedure: SID CENTEX EIGHT AUSTIN TX KAUS		Enroute: YES	Specialist: Johnsen, Daniel		Agreement Number:
Airport ID: KAUS			Airport City: AUSTIN		State: TX
Facility ID: CWK	Facility Type: VORTAC	Flight Inspection Remark Type: New FC Slot			
<div>Procedure Comments:</div> <div>Active data used for KAUS airport and runways.</div> <div>ESV (1): GOOCH SPRINGS (AGJ) VORTAC (1).</div> <div>8260-1 (1): Waiver for obstacle assessment for a SID supporting a range of initial headings when ATC requests a maintain altitude lower than the unrestricted climb allowed by TERPS IAW AFS Memo: Clarification to FAA Order 8260.46, Departure Procedure (DP) Program, Standard Instrument Departure (SID).</div> <div>IDU VOR MON.</div> <div>Contact Allan Will, AJV-A423, (405) 954-6103.</div> <div>10/7/24: This is an updated copy of the form developed on 8/16/24.</div> <div>Added diverse departure FIMS in S-file.</div> <div>8260-2: HOOKK</div> <div>1. Updated holding pattern controlling obstruction coordinates from "301954.00N/0971130.00W" PAT 1 and "301939.00N/0971136.00W" PAT 2 to "302036.00N/0971130.00W" for both patterns, elevation from "942" to "956", and accuracy code from "4E" to "4B".</div> <div>2. Added RNAV (GPS) RWY 17 at KGYB in fix use.</div> <div>8260-2: ILEXY</div> <div>1. Deleted RNAV (GPS) RWY 17 at KGYB in fix use.</div> <div>2. Deleted "IAP" in required charting.</div> <div>QUALITY 20 CHECKED</div> <div>QUALITY 41 CHECKED</div>					

FIPC BASIC FORM									
PROCEDURE: SID CENTEX EIGHT AUSTIN TX KAUS			AIRPORT NAME: AUSTIN-BERGSTROM INTL		AIRPORT ID: KAUS	SPECIAL CONTROL NO: OP-10-248-24			
FAC ID: CWK8		CITY: AUSTIN			ST: TX	ORIG CHART DATE: 02/20/2025			
DFL TYPE: PROC/T	THIRD PARTY: <input type="checkbox"/> YES	EST. TIME ON SITE: 0.4	REIMB. NUMBER: AC0721		PTS TASK ID: F823DF4E3724430F9E0F2C9BBBF18380				
PREFLIGHT NOTES									
REVIEWER:						DATE:			
COMMENTS:						CHECK ONE: <input type="checkbox"/> FLT CK REQ <input type="checkbox"/> NFCR <input type="checkbox"/> REJECT			
								YES	NO
						CPV COMPLETE?		X	
PROCEDURE RESULTS									
INSPECTION DATE: 11/22/2024		CREW #: VN568	N #: N83	INSTRUMENT PROCEDURE STATUS: <input checked="" type="checkbox"/> SAT <input type="checkbox"/> SAT W/CHANGES <input type="checkbox"/> UNSAT		ARINC CODING: <input type="checkbox"/> SAT <input type="checkbox"/> SAT/GOLD <input type="checkbox"/> UNSAT			
FLIGHT INSPECTOR SIGNATURE: russell roslewski @ 11/22/2024 16:44				PRINTED NAME: ROSLEWSKI, RUSSELL BRIAN			NOTAM INITIATED? <input type="checkbox"/> YES <input checked="" type="checkbox"/> NO		
FLIGHT INSPECTOR REMARKS:									
IN-FLIGHT OBSTACLE REPORT									
OBSTRUCTION ID #:	COORDINATES OR LOCATION:		GNSS ALTITUDE (MSL):		BAROMETRIC ALTITUDE (MSL):		HEIGHT ABOVE GROUND LEVEL:		

1. FLIGHT PROCEDURE IDENTIFICATION:

AUSTIN, TX
AUSTIN-BERGSTROM INTL (KAUS)
CENTEX DEPARTURE

2. WAIVER REQUIRED AND APPLICABLE STANDARD: To permit publishing a SID with no assigned heading or altitude. FAA Order 8260.46 Memorandum paragraph 4-a.b. States: Do not apply Section 13-2, Diverse Departure Assessment without a FS waiver for the following.

- a. A SID designed to support ATC radar vectoring below the MVA without a DVA.
- b. A SID designed to support ATC issuing a range of initial headings with a maintained altitude lower than the unrestricted climb allowed by TERPS.

3. REASON FOR WAIVER (JUSTIFICATION FOR NONSTANDARD TREATMENT): Currently, the CENTEX Departure primarily serves Austin-Bergstrom INTL (KAUS). Austin TRACON (AUS) ATC request to have the departure route description for KAUS state: Climb on assigned heading for vectors, then on assigned transition. Maintain altitude assigned by ATC, expect filed altitude 10 minutes after departure. This departure route description is currently published.

4. EQUIVALENT LEVEL OF SAFETY PROVIDED: A Diverse Departure Assessment has been completed for KAUS. TAKEOFF MINS will be published on the SID chart and establish the necessary climb needed to avoid obstacles until reaching the Minimum Vectoring Altitude (MVA) of 2000 feet where Air Traffic will assume responsibility for the aircraft.

RWY 18L, 18R: STANDARD

RWY 36L, 36R: STANDARD WITH MINIMUM CLIMB OF 240 FT/NM TO 2600

5. ALTERNATIVE ACTIONS DEEMED NOT FEASIBLE: Due to the variations in the performance of local aircraft, AUS requires the ability to assign diverging headings on departure to deconflict traffic. AUS requires the ability to assign altitudes based off of operational need which will be at or above the MVA for AUS.

6. COORDINATION WITH USER ORGANIZATIONS (SPECIFY):

AUS Approach Control, Austin-Bergstrom Intl (KAUS) ATCT.

7. SUBMITTED BY:

DATE	OFFICE IDENTIFICATION	TITLE
07/30/24	AJV-A423	MANAGER

SIGNATURE

Digitally signed by

ALLAN WILL

Oct 09, 2024

8. AFS ACTIONS:

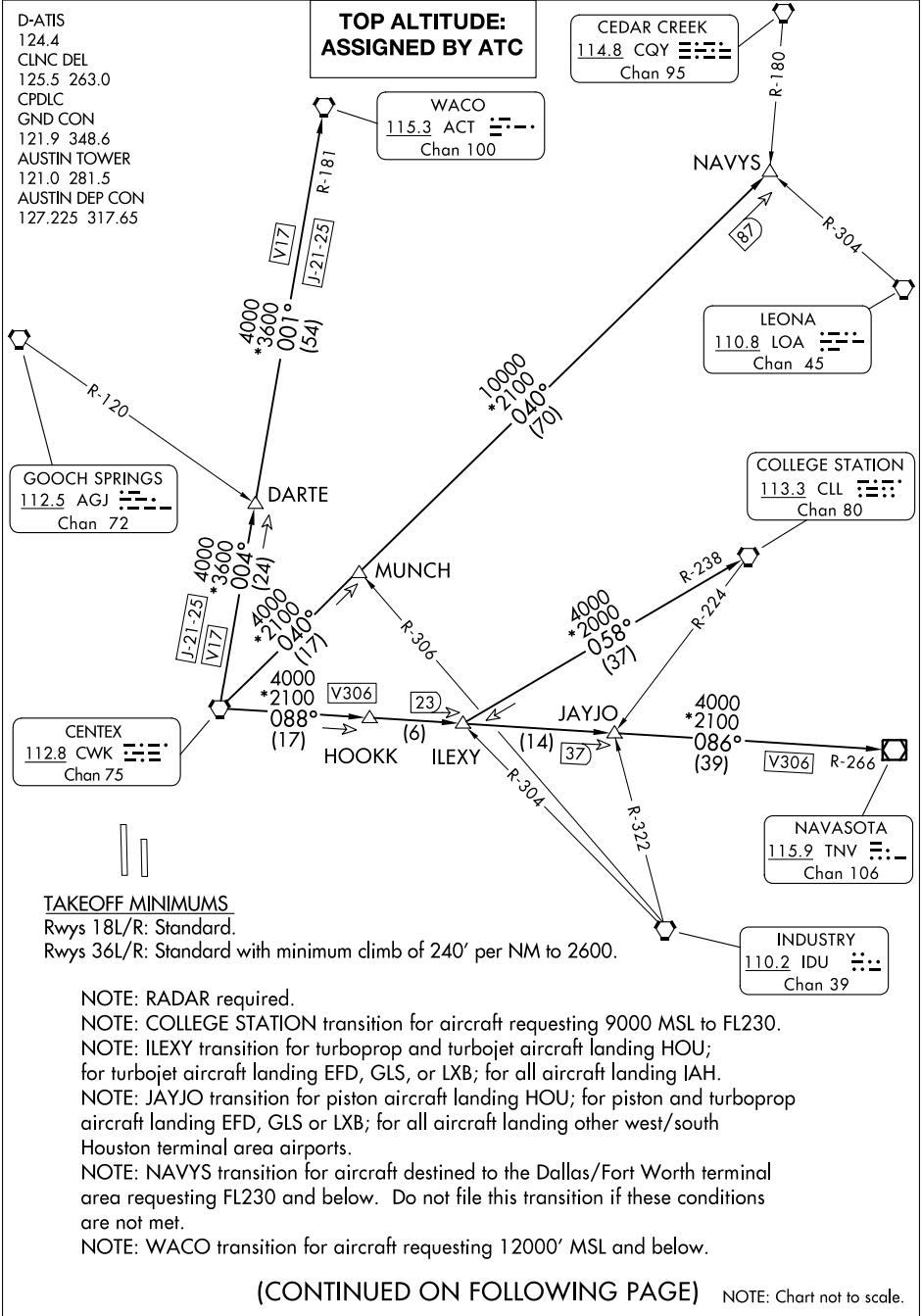
☐ APPROVED ☐ DISAPPROVED ☐ NOT REQUIRED

COMMENTS:

DATE	ROUTING SYMBOL	SIGNATURE
------	----------------	-----------

ESV Details

Originating Office :AJV-A422		Airspace Docket Number :		Request Type :Establish		
Facility Data						
Chart Name:MUNCH		City:LAMPASAS		Ident:AGJ		State:TX
Type/Class: H-VOR		Frequency: M112.5		Reference Number: 24081240		
Extended Service Volume Data: (Requesting Officer)						
ESV ID	Radial 1	Radial 2	Distance	Minimum Altitude	Maximum Altitude	
FAA 767087 - 029	125		57	40	157	
Requirement: MUNCH XING CENTEX SID KAUS						
Signature:Johnsen Daniel		Routing Symbol:AJV-A423				Date:08/19/2024
Extended Service Volume Data: (FMO)						
ESV ID	Radial 1	Radial 2	Distance	Minimum Altitude	Maximum Altitude	Action Type
FAA 767087 - 029	125		57	40	157	APPROVE
Requirement/Remarks: MUNCH XING CENTEX SID KAUSAPPROVED. FREQ. PROTECTION & FIELD STRENGTH. PENDING FLIGHT INSPECT @ REQUIRED. DIST. & MIN ALT..						
Signature:Bowers Michael		Routing Symbol:			Date:08/20/2024	
Extended Service Volume Data: (Super FMO)						
ESV ID	Radial 1	Radial 2	Distance	Minimum Altitude	Maximum Altitude	Action Type
FAA 767087 - 029	125		57	40	157	APPROVE
Requirement/Remarks: MUNCH XING CENTEX SID KAUSAPPROVED. FREQ. PROTECTION & FIELD STRENGTH. PENDING FLIGHT INSPECT @ REQUIRED. DIST. & MIN ALT..						
Signature:Hughes Dennis		Routing Symbol:			Date:08/20/2024	
Extended Service Volume Data: (FIFO)						
ESV ID	Radial 1	Radial 2	Distance	Minimum Altitude	Maximum Altitude	Action Type
FAA 767087 - 029	125					
Requirement/Remarks:						
Signature:		Routing Symbol:			Date:	



SC-3, 08 AUG 2024 to 05 SEP 2024

SC-3, 08 AUG 2024 to 05 SEP 2024



DEPARTURE ROUTE DESCRIPTION

TAKEOFF RUNWAYS 18L/R, 36L/R: Climb on assigned heading for vectors, then on assigned transition. Maintain altitude assigned by ATC, expect filed altitude 10 minutes after departure.

COLLEGE STATION TRANSITION (CWK7.CLL): From over CWK VORTAC on CWK R-088 to ILEXY INT, then on CLL R-238 to CLL VORTAC.

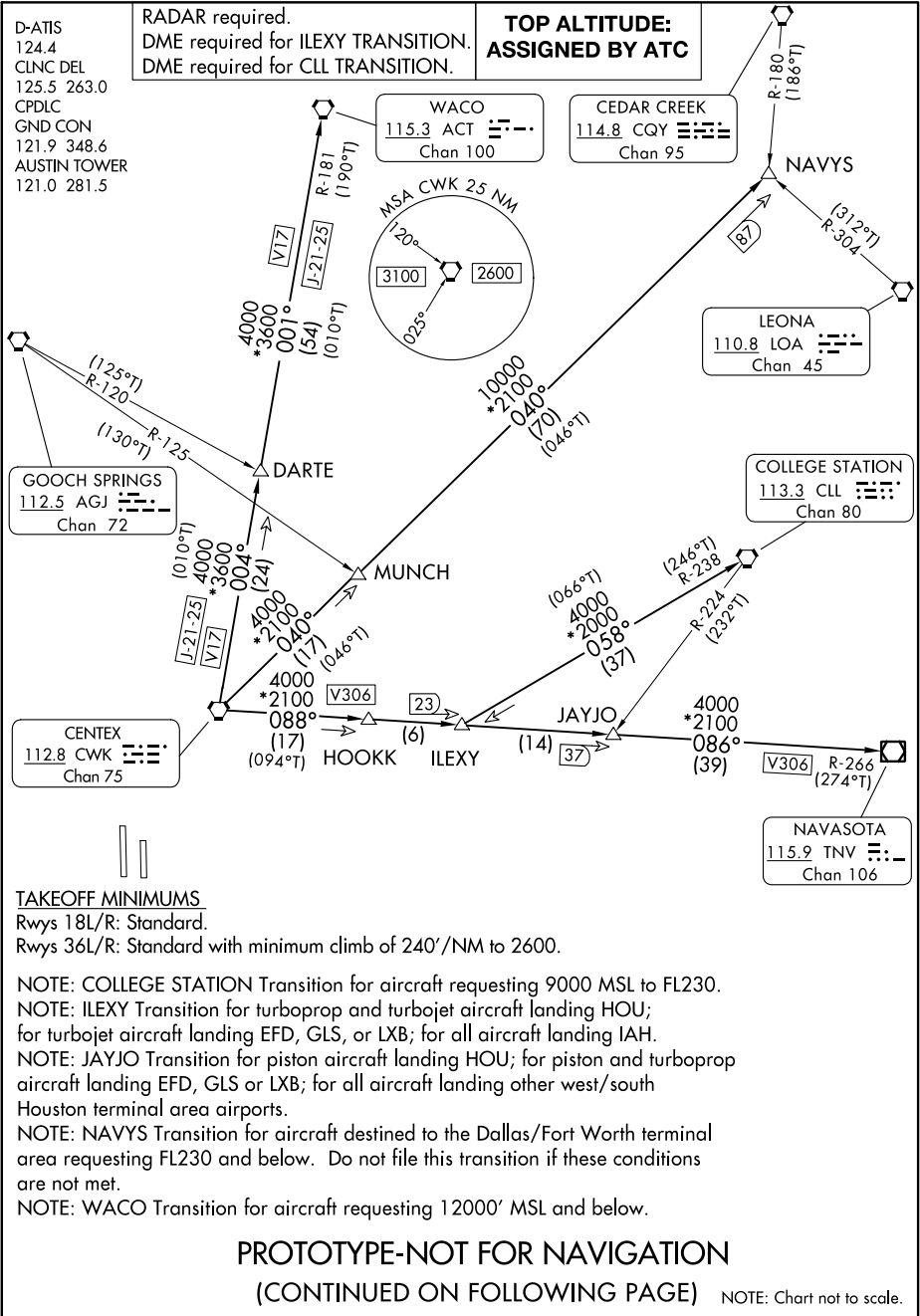
ILEXY TRANSITION (CWK7.ILEXY): From over CWK VORTAC on CWK R-088 to ILEXY INT.

JAYJO TRANSITION (CWK7.JAYJO): From over CWK VORTAC on CWK R-088 to JAYJO INT.

NAVASOTA TRANSITION (CWK7.TNV): From over CWK VORTAC on CWK R-088 and TNV R-266 to TNV VOR/DME.

NAVYS TRANSITION (CWK7.NAVYS): From over CWK VORTAC on CWK R-040 to NAVYS INT.

WACO TRANSITION (CWK7.ACT): From over CWK VORTAC on CWK R-004 and ACT R-181 to ACT VORTAC.



CENTEX EIGHT DEPARTURE

CWK8.CWK) FIG

AUSTIN, TEXAS

AUSTIN-BERGSTROM INTL (AUS)



DEPARTURE ROUTE DESCRIPTION

TAKEOFF RUNWAYS 18L/R, 36L/R: Climb on assigned heading for vectors, then on assigned transition. Maintain altitude assigned by ATC, expect filed altitude 10 minutes after departure.

COLLEGE STATION TRANSITION (CWK8.CLL): From over CWK VORTAC on CWK R-088 to ILEXY INT, then on CLL R-238 to CLL VORTAC.

ILEXY TRANSITION (CWK8.ILEXY): From over CWK VORTAC on CWK R-088 to ILEXY INT.

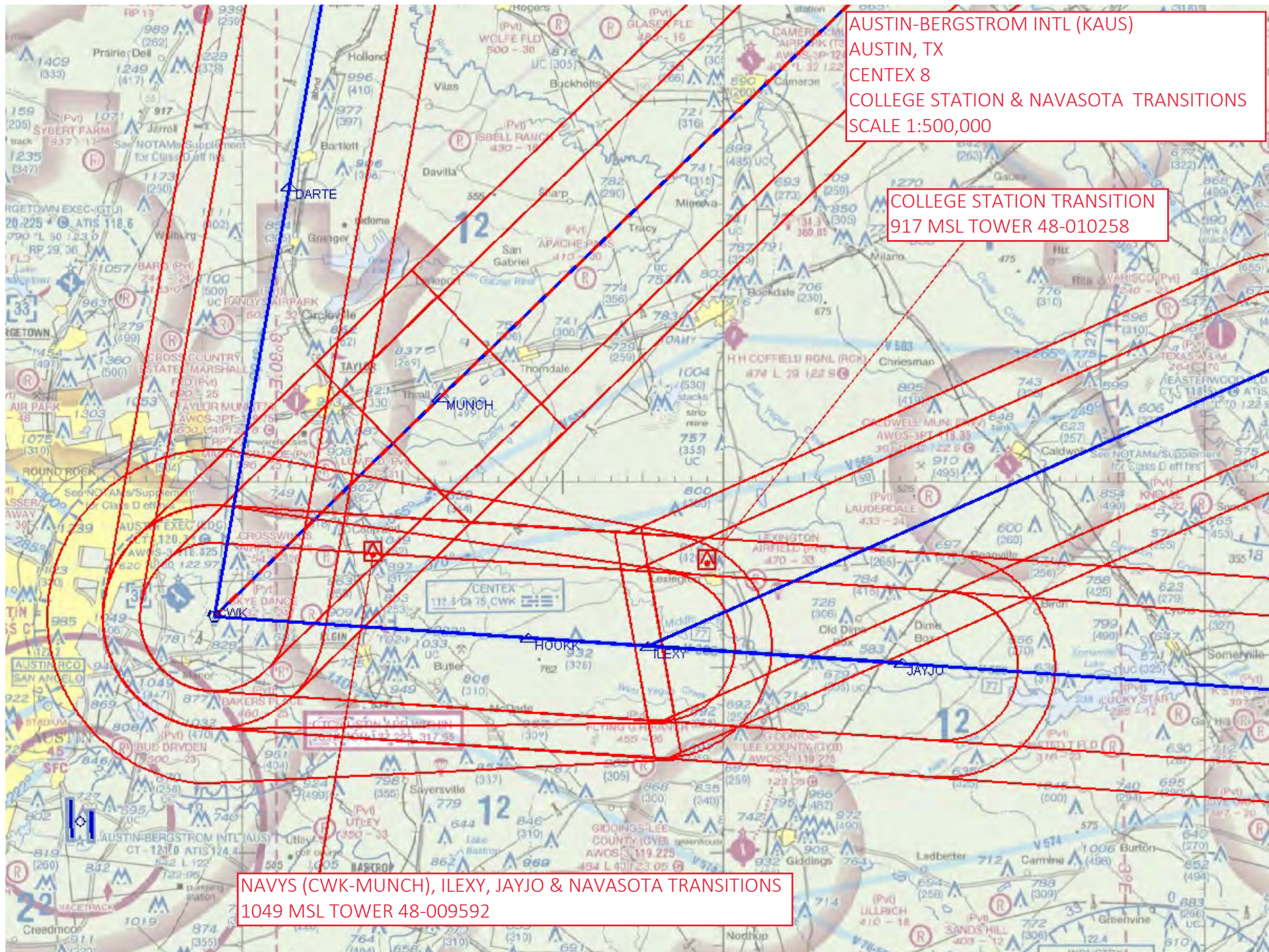
JAYJO TRANSITION (CWK8.JAYJO): From over CWK VORTAC on CWK R-088 to JAYJO INT.

NAVASOTA TRANSITION (CWK8.TNV): From over CWK VORTAC on CWK R-088 and TNV R-266 to TNV VOR/DME.

NAVYS TRANSITION (CWK8.NAVYS): From over CWK VORTAC on CWK R-040 to NAVYS INT.

WACO TRANSITION (CWK8.ACT): From over CWK VORTAC on CWK R-004 and ACT R-181 to ACT VORTAC.

PROTOTYPE-NOT FOR NAVIGATION

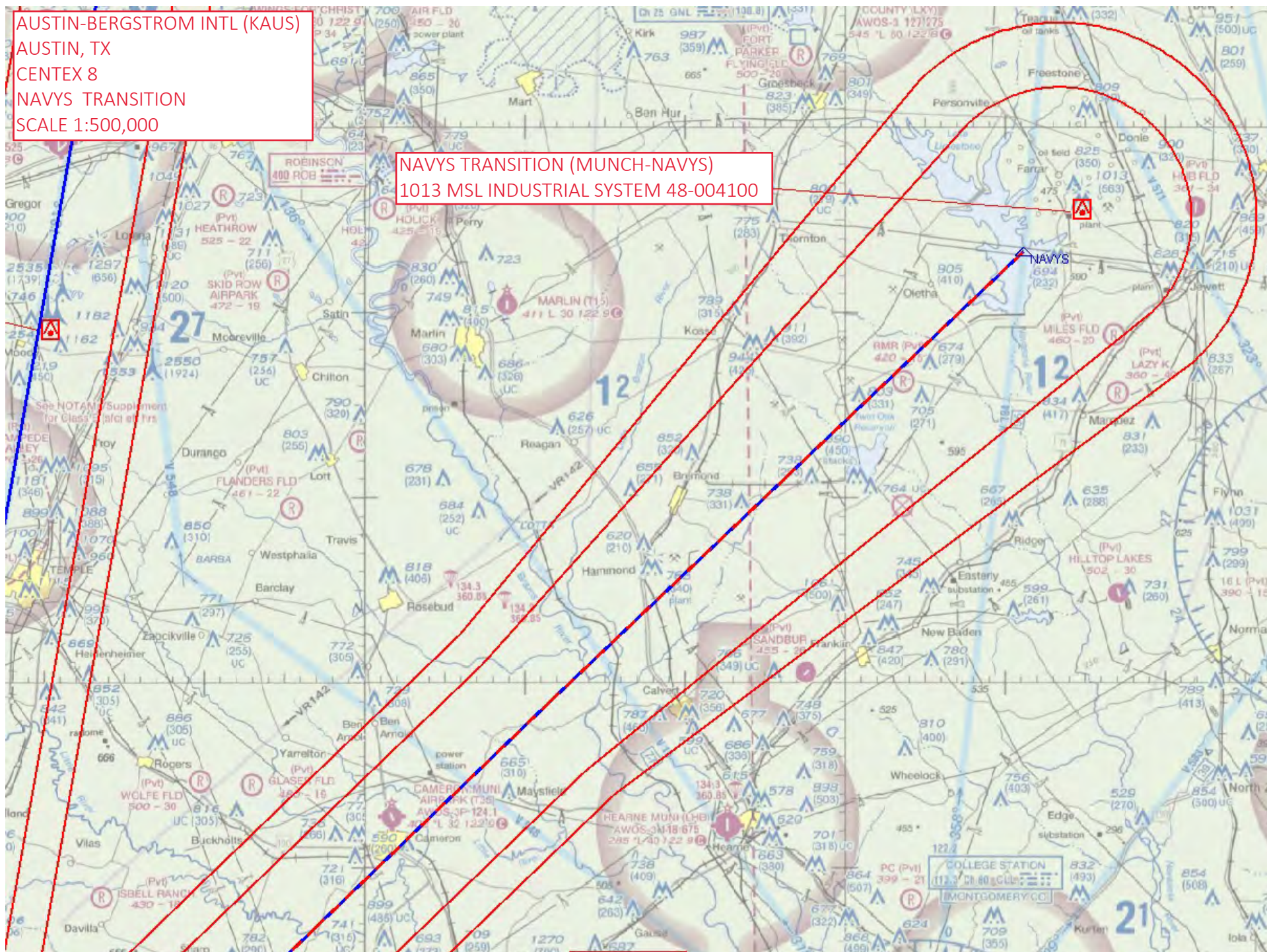


AUSTIN-BERGSTROM INTL (KAUS)
AUSTIN, TX
CENTEX 8
WACO TRANSITION
SCALE 1:500,000

WACO TRANSITION
2541 MSL TOWER 48-005677

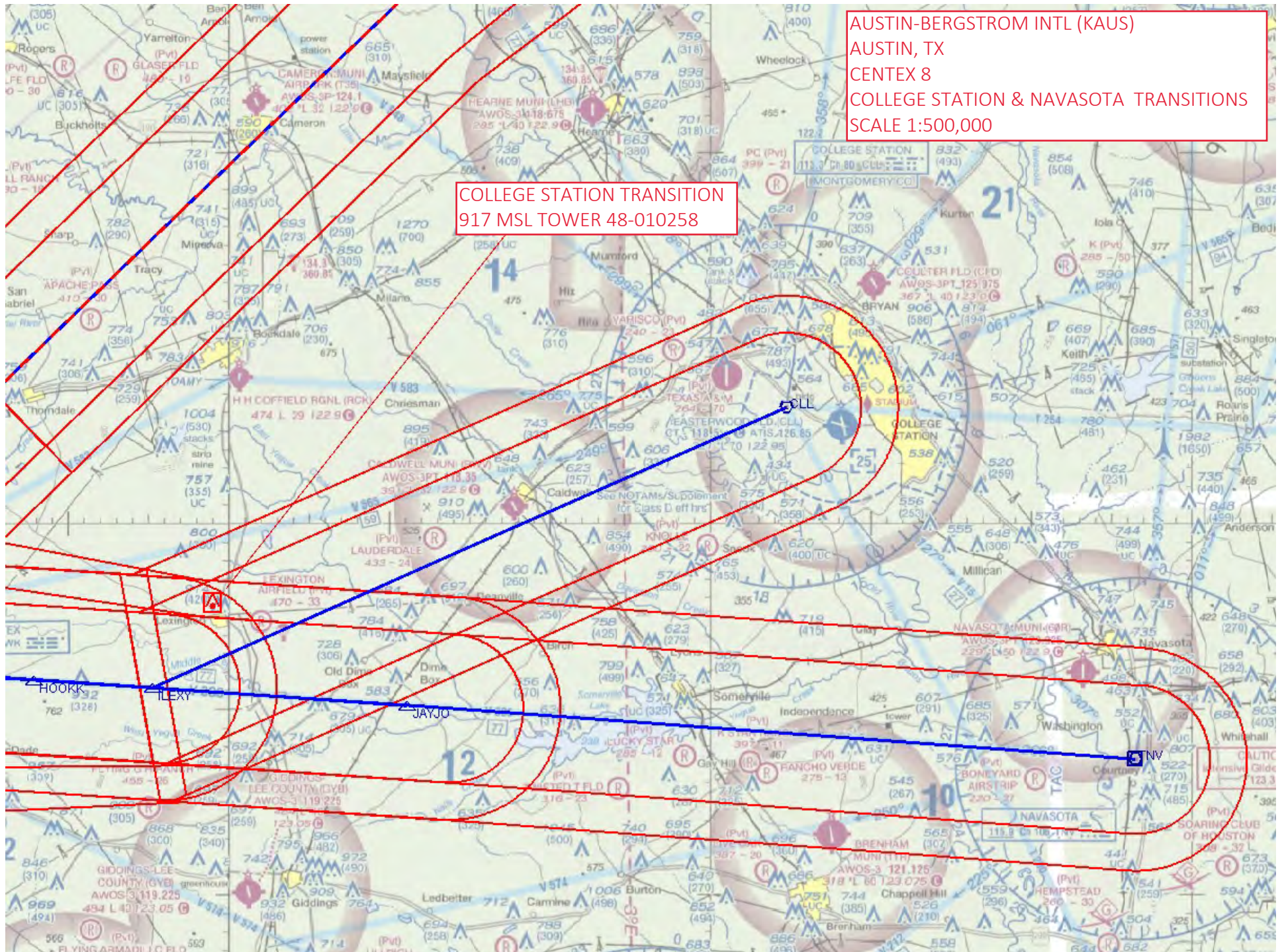
AUSTIN-BERGSTROM INTL (KAUS)
AUSTIN, TX
CENTEX 8
NAVYS TRANSITION
SCALE 1:500,000

NAVYS TRANSITION (MUNCH-NAVYS)
1013 MSL INDUSTRIAL SYSTEM 48-004100

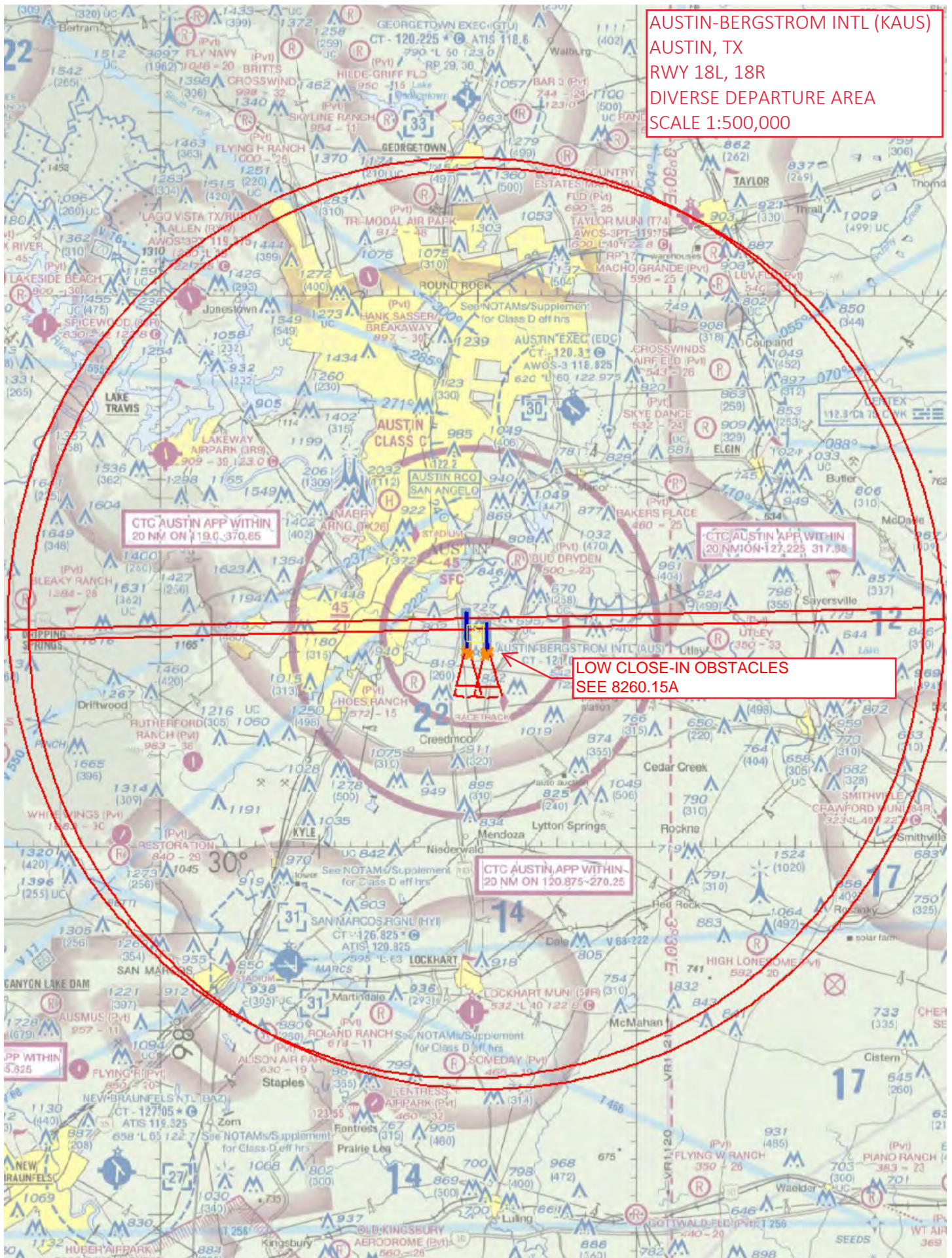


AUSTIN-BERGSTROM INTL (KAUS)
AUSTIN, TX
CENTEX 8
COLLEGE STATION & NAVASOTA TRANSITIONS
SCALE 1:500,000

COLLEGE STATION TRANSITION
917 MSL TOWER 48-010258



AUSTIN-BERGSTROM INTL (KAUS)
AUSTIN, TX
RWY 18L, 18R
DIVERSE DEPARTURE AREA
SCALE 1:500,000



AUSTIN-BERGSTROM INTL (KAUS)
AUSTIN, TX
RWY 36L, 36R
DIVERSE DEPARTURE AREA
SCALE 1:500,000

RWY 36L/R CG/CGTA
2032 MSL TOWER 48-000054

CTC AUSTIN APP WITHIN
20 NM ON 190.370.85

CTC AUSTIN APP WITHIN
20 NM ON 127.225 317.55

LOW CLOSE-IN OBSTACLES
SEE 8260.15A

