

Flight Procedures Cover Page	Task Action: FLIGHT CHECK	Task Type: IAP	Estimated Chart Date: 09/05/2024	APWS Task ID: F8096BA26EA9475D90D47F4CE142F490	APWS Project ID: C1C3F1CD4B344985AF1DAB280FABB2F5
Procedure: RNAV (RNP) Z RWY 28 AMDT 2		Enroute: NO	Specialist: Krueger, Zachary		Agreement Number:
Airport ID: KBWI			Airport City: BALTIMORE		State: MD
Facility ID:	Facility Type:	Flight Inspection Remark Type: New FC Slot			
<div>Procedure Comments: PROCEDURE REDESIGN FOR NOISE ABATEMENT.</div> <div>CONTACT ERIC SUSKI: (405) 954-7331.</div> <div><div>Digitally signed by <b>ERIC N SUSKI</b> Jul 25, 2024</div><div><div>QUALITY 26 CHECKED</div><div>QUALITY 9 CHECKED BEGUE</div></div></div>					



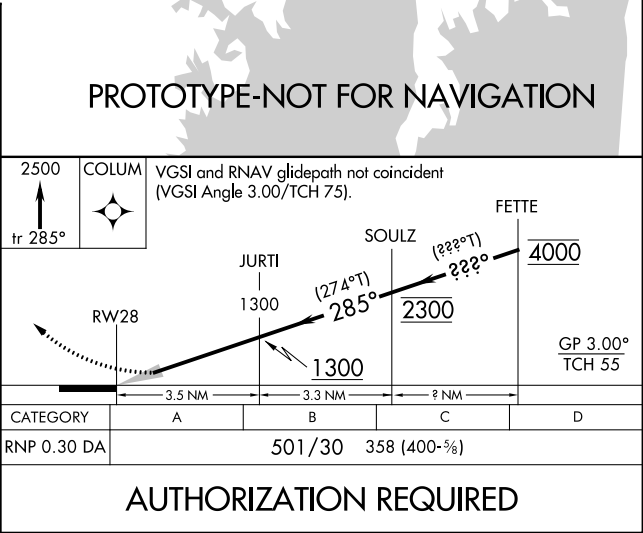
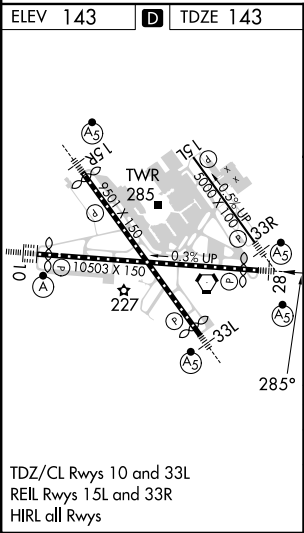
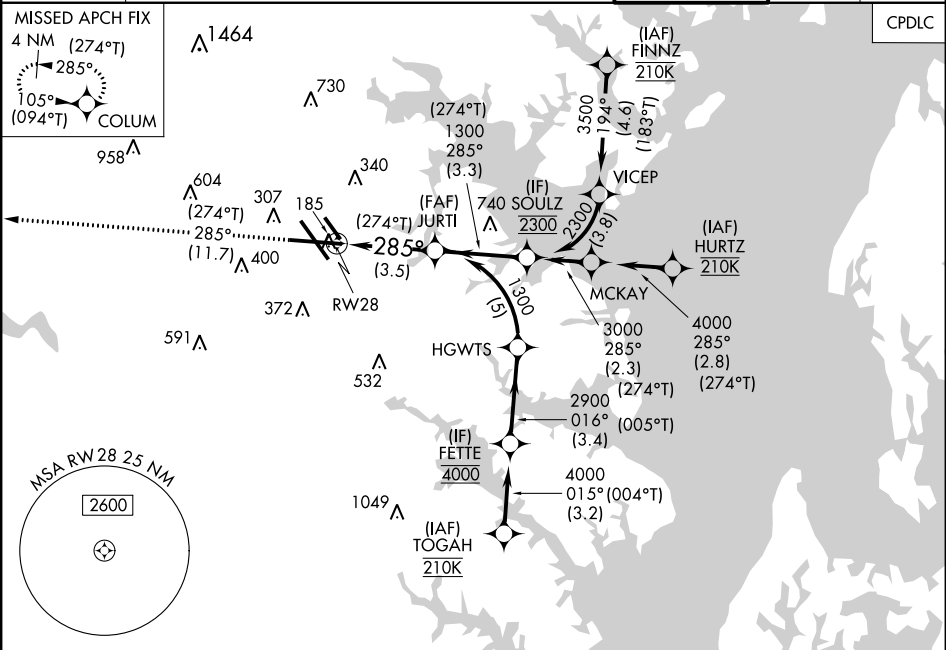
APP CRS	Rwy Idg	9803
285°	TDZE	143
	Apt Elev	143

RNAV (RNP) Z RWY 28

BALTIMORE/WASHINGTON INTL THURGOOD MARSHALL (BWI)

RNP AR APCH - GPS.	MALSR	MISSED APPROACH: Climb to 2500 on track 285° to COLUM and hold.
For uncompensated Baro-VNAV systems, procedure NA below -12°C or above 54°C. For inop ALS, increase RNP 0.30 all Cnts visibility to RVR 5500.		

D-ATIS	POTOMAC APP CON	BALTIMORE TOWER	GND CON	CLNC DEL
115.1 127.8	119.0 282.275 (020°-100°) 119.7 290.475 (131°-180°) 124.55 317.425 (101°-130°) 128.7 307.9 (181°-019°)	119.4 257.8	121.9	118.05



OLD

BALTIMORE, MARYLAND

AL-804 (FAA)

23222

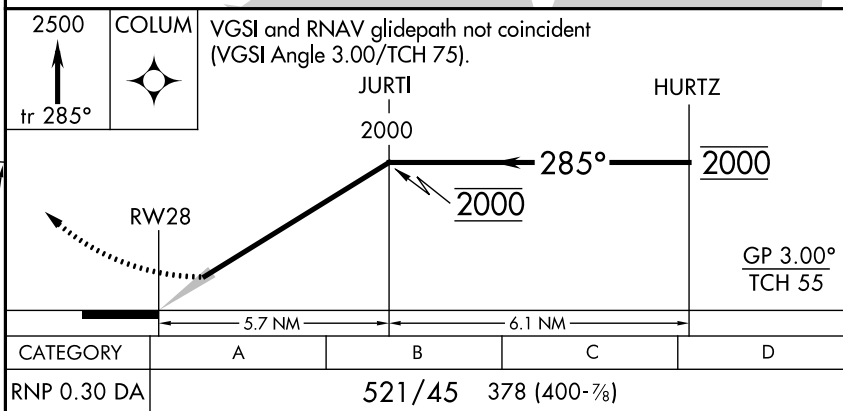
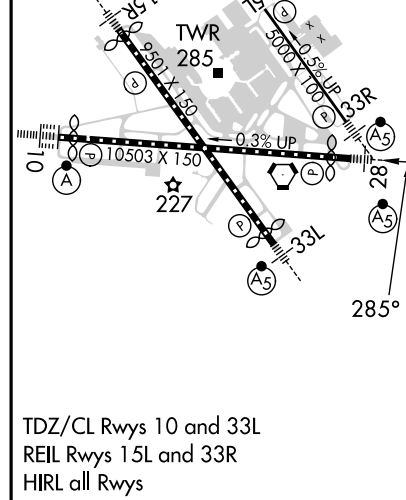
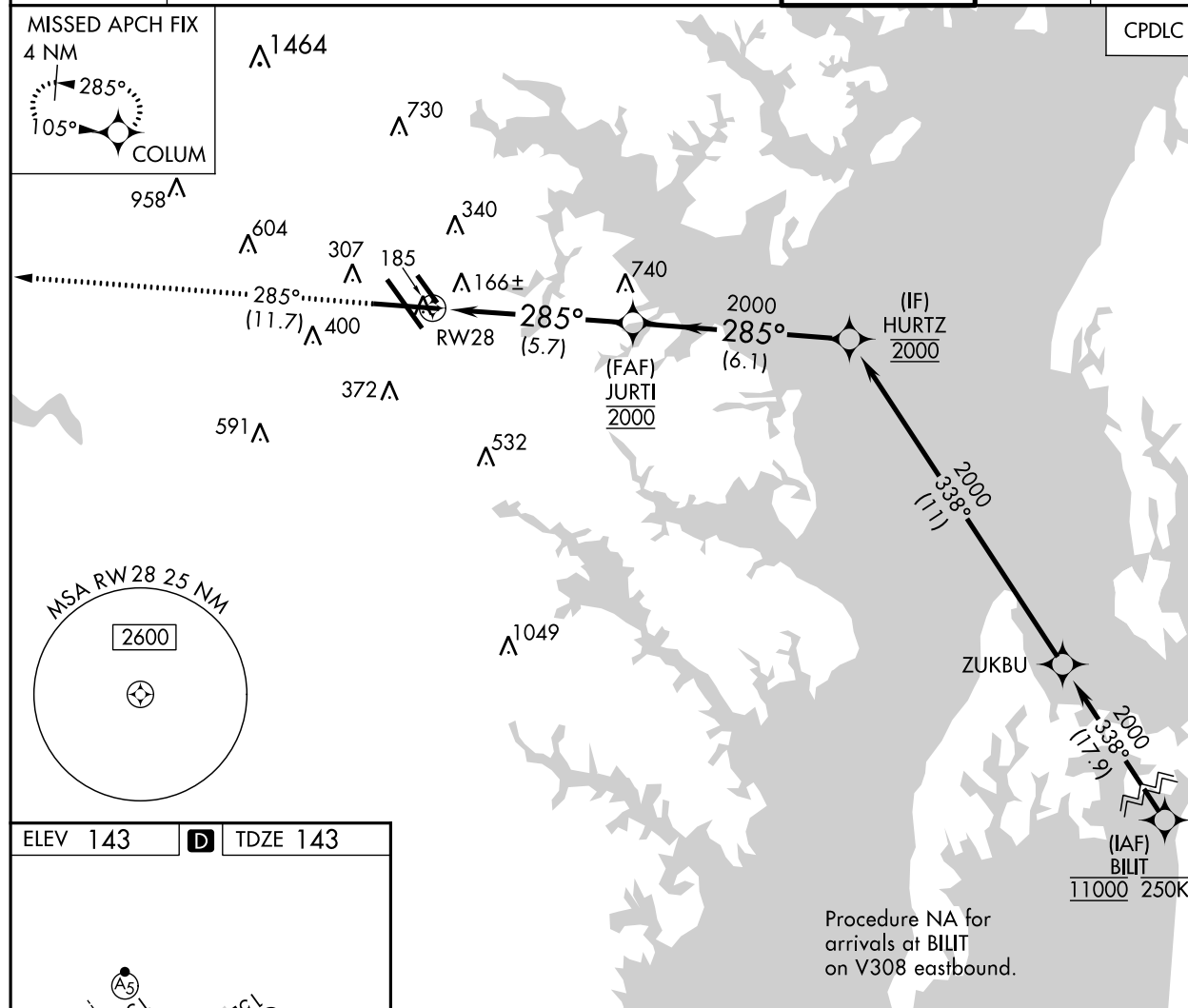
APP CRS	Rwy Idg	9803
285°	TDZE	143
	Apt Elev	143

## RNAV (RNP) Z RWY 28

BALTIMORE/WASHINGTON INTL THURGOOD MARSHALL (BWI)

RNP AR APCH - GPS.	MALSR	MISSED APPROACH: Climb to 2500 on track 285° to COLUM and hold.
▼ For uncompensated Baro-VNAV systems, procedure NA below -12°C or above 54°C. For inop ALS, increase RNP 0.30 all Cats visibility to 1 1/4.		

D-ATIS	POTOMAC APP CON	BALTIMORE TOWER	GND CON	CLNC DEL
115.1 127.8	119.0 282.275 (020°-100°) 119.7 290.475 (131°-180°) 124.55 317.425 (101°-130°) 128.7 307.9 (181°-019°)	119.4 257.8	121.9	118.05



AUTHORIZATION REQUIRED

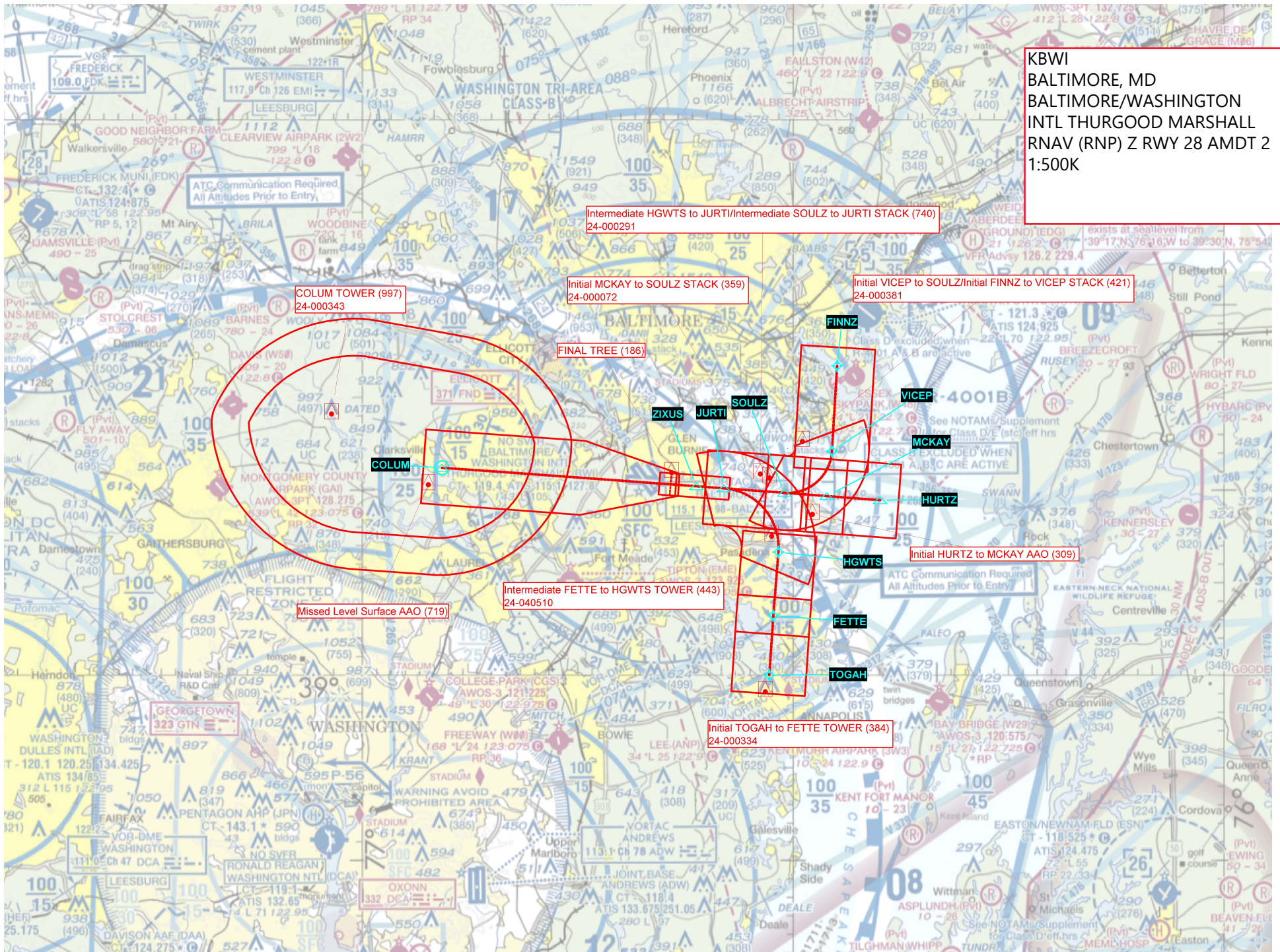
BALTIMORE, MARYLAND  
Amdt 1A 24MAR22

BALTIMORE/WASHINGTON INTL THURGOOD MARSHALL (BWI)  
39°11'N-76°40'W

RNAV (RNP) Z RWY 28

NE-3, 28 DEC 2023 to 25 JAN 2024





KBWI  
BALTIMORE, MD  
BALTIMORE/WASHINGTON  
INTL THURGOOD MARSHALL  
RNAV (RNP) Z RWY 28 AMDT 2  
1:500K

Intermediate HGWTS to JURT/Intermediate SOULZ to JURT STACK (740)  
24-000291

Initial MCKAY to SOULZ STACK (359)  
24-000072

Initial VICEP to SOULZ/Initial FINNZ to VICEP STACK (421)  
24-000381

COLUM TOWER (997)  
24-000343

FINAL TREE (186)

COLUM

ELLCOTT

FINNZ

SOULZ

VICEP

MCKAY

HURTZ

FETTE

TOGAH

Intermediate FETTE to HGWTS TOWER (443)  
24-040510

Missed Level Surface AAO (719)

Initial TOGAH to FETTE TOWER (384)  
24-000334

Initial HURTZ to MCKAY AAO (309)



KBWI  
BALTIMORE, MD  
BALTIMORE/WASHINGTON  
INTL THURGOOD MARSHALL  
RNAV (RNP) Z RWY 28 AMDT 2  
1:100K

