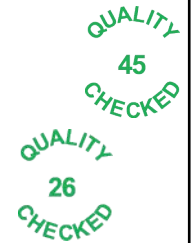


Flight Procedures Cover Page	Task Action: P-NOTAM	Task Type: IAP	Estimated Chart Date: 09/09/2021	APWS Task ID: F7E2A04C0A50445CB246F6570F555E05	APWS Project ID: 3F52BB415E814DFD88E885D49FEB99F0
Procedure: RNAV (GPS) RWY 17 AMDT 1A		Enroute: NO	Specialist: Lafferty, James		Agreement Number:
Airport ID: KPTT			Airport City: PRATT		State: KS
Facility ID:	Facility Type:	Flight Inspection Remark Type:			
<p>Procedure Comments:</p> <p>P-NOTAM</p> <p>This Cancels FDC 0/2245</p> <p>Order 8260.3, chapter 2, New Circling Criteria Applied</p> <p>Contact Dave Teffeteller at 202-267-5177</p>					



WAAS CH <b>99607</b> <b>W17A</b>	APP CRS <b>173°</b>	Rwy Idg TDZE <b>1953</b> Apt Elev <b>1953</b>
--	------------------------	---

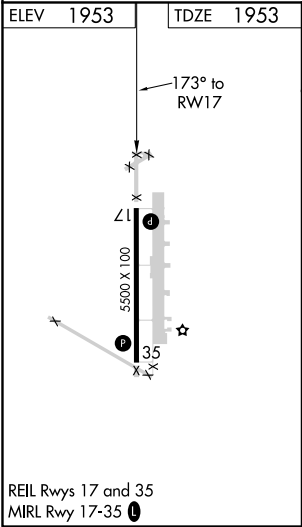
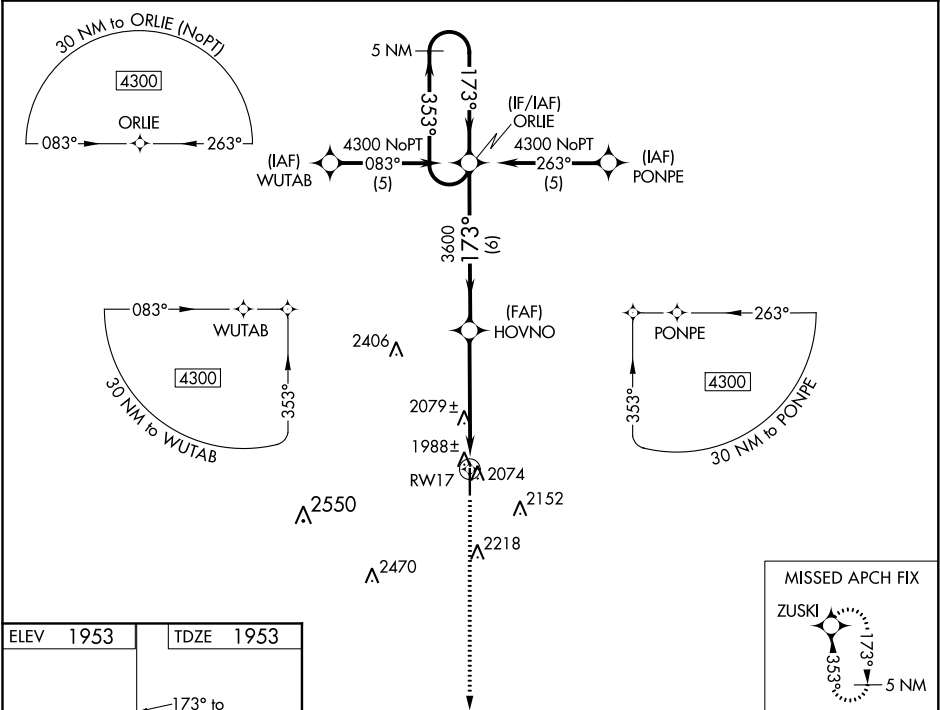
OLD

RNAV (GPS) RWY 17  
PRATT RGNL (P'TT')

**⚠** For uncompensated Baro-VNAV systems, LNAV/VNAV NA below -18°C (0°F) or above 54°C (130°F). DME/DME RNP-0.3 NA. When local altimeter setting not received use Great Bend altimeter setting and increase all DA/MDA 100 feet and LPV visibility ¼ mile all Cats, LNAV/VNAV visibility ½ mile all Cats and LNAV Cat C ¼ mile. Baro-VNAV and VDP NA when using Great Bend altimeter setting.

MISSED APPROACH: Climb to 4300 direct ZUSKI and hold.

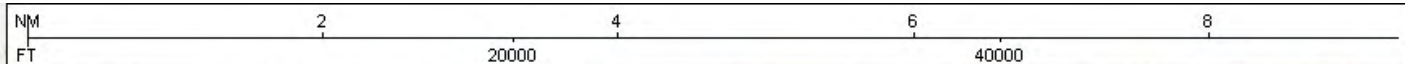
AWOS-3PT <b>118.725</b>	KANSAS CITY CENTER <b>118.8 322.425</b>	UNICOM <b>122.8 (CTAF) 0</b>
----------------------------	--	---------------------------------



5 NM Holding Pattern				ORLIE	HOVNO	4300	ZUSKI
4300				353°	173°	173°	
GP 3.00° TCH 40				3600			
				6 NM	3.9 NM	1.1 NM	
CATEGORY	A	B	C	D			
LPV DA	2203-1	250 (300-1)		NA			
LNAV/VNAV DA	2258-1	305 (400-1)		NA			
LNAV MDA	2340-1	387 (400-1)		NA			
CIRCLING	2380-1 427 (500-1)	2420-1 467 (500-1)	2420-1½ 467 (500-1½)	NA			

NC-2, 16 JUL 2020 to 13 AUG 2020

NC-2, 16 JUL 2020 to 13 AUG 2020



KPTT  
PRATT RGNL  
PRATT, KS  
**RNAV GPS RWY 17 A1A**  
100K CIRCLING AREA

PFAF [UD]

Circling CAT B TREE (2079)

Circling CAT A TANK (2074)  
20-023202

Circling CAT C TOWER (2218)  
20-000174

