

Flight Procedures Cover Page	Task Action: P-NOTAM	Task Type: IAP	Estimated Chart Date: 10/02/2025	APWS Task ID: F755515FDEA54C26BD0F9F58440BDD93	APWS Project ID: 289FD95811BA46EC844E02227A90C028
Procedure: RNAV (GPS) RWY 15 AMDT 1C		Enroute: NO	Specialist: Miller, Ralph		Agreement Number:
Airport ID: KMKA			Airport City: MILLER		State: SD
Facility ID:	Facility Type:	Flight Inspection Remark Type:			
<div>Procedure Comments:</div> <div>PERMANENT WIND TURBINE STUDIES EVALUATED ARE 2021-WTE-1932-1938, 1949, 1958-1959, 1974-OE. MSA ALTITUDE UPDATED TO 3700.</div> <div>PROCESSED IAW TECHNICAL SUPPORT GROUP (AJF-17) MEMO DATED 07/07/2021 GUIDANCE FOR PROCEDURAL CHANGES REQUIRING FLIGHT INSPECTION/VALIDATION.</div> <div>CONTACT ALLAN WILL (405) 954 6103</div> <div><div>QUALITY 38 CHECKED</div><div>QUALITY 40 CHECKED</div></div>					

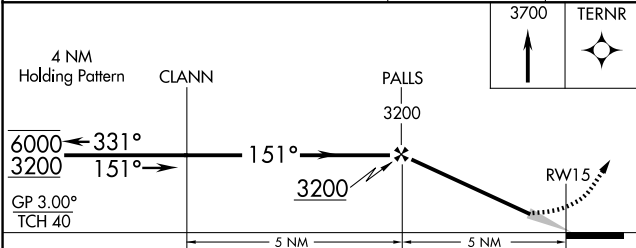
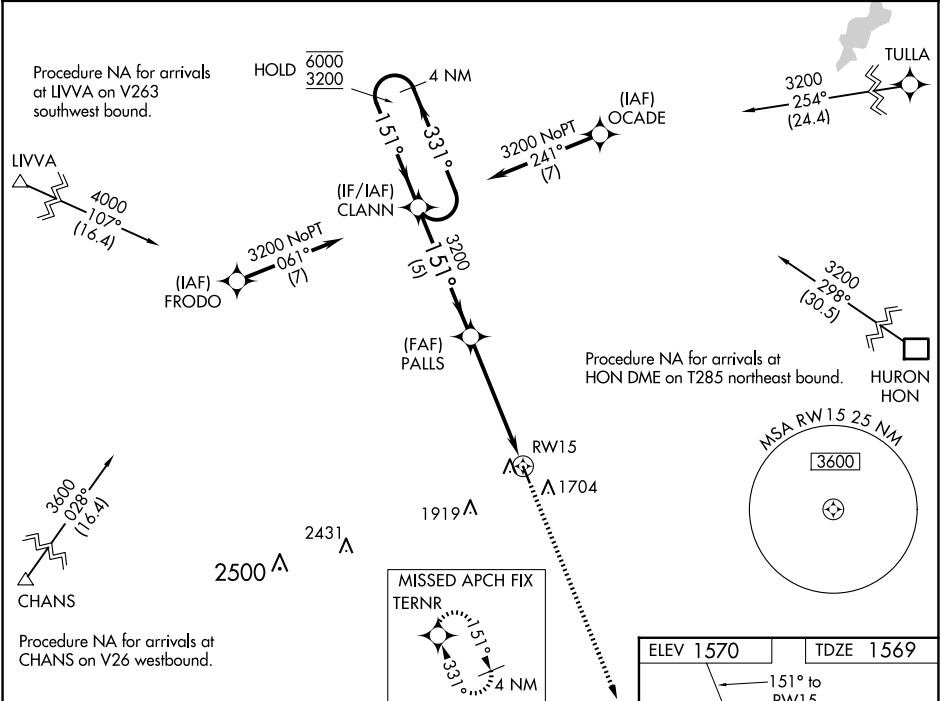
WAAS CH 50322 W15A	APP CRS 151°	Rwy Idg TDZE Apt Elev	3601 1569 1570
--	------------------------	-----------------------------	---

OLD

RNAV (GPS) RWY 15
MILLER MUNI (MKA)

RNP APCH.	MISSED APPROACH: Climb to 3700 direct TERNR and hold.
Baro-VNAV NA. Use Huron altimeter setting.	

HON ASOS 118.125	MINNEAPOLIS CENTER 125.1 269.1	CTAF 122.9	GCO 121.725	122.80
----------------------------	--	----------------------	-----------------------	---------------



CATEGORY	A	B	C	D
LPV DA	1883-1	314 (400-1)	NA	
RNAV/ VNAV DA	1964-1 3/8	395 (400-1 3/8)	NA	
RNAV MDA	2100-1	531 (600-1)	NA	
CIRCLING	2180-1 610 (700-1)	2220-1 650 (700-1)	NA	

