

Flight Procedures Cover Page	Task Action: P-NOTAM	Task Type: IAP	Estimated Chart Date: 04/21/2022	APWS Task ID: F5A16FC6F97B4F3095BC0769F56C4D5B	APWS Project ID: 53A9AEC7F1F249199AFC7C816CAA08A7
Procedure: RNAV (GPS) RWY 36 AMDT 0B		Enroute: NO	Specialist: Sickels, Dale		Agreement Number:
Airport ID: KLYV			Airport City: LUVERNE		State: MN
Facility ID:	Facility Type:	Flight Inspection Remark Type:			
<div>Procedure Comments: Order 8260.3, Chapter 2, New Circling Criteria Applied. CIRCLING RADII INCREASE BASED ON EXISTING PROCEDURE AT AIRPORT - RNAV (GPS) RWY 18, AMDT 1, CHART DATE 1/27/22. Contact Jason Kretschmer, AJV-A421, 405-954-4019</div> <div><div>Digitally signed by JASON KRETSCHMER Feb 28, 2022</div><div>QUALITY 47 CHECKED QUALITY 38 CHECKED</div></div>					

WAAS CH 40117 W36A	APP CRS 355°	Rwy Idg TDZE Apt Elev 4200 1432 1434
--	------------------------	--

RNAV (GPS) RWY 36

QUENTIN AANENSON FLD (LYV)

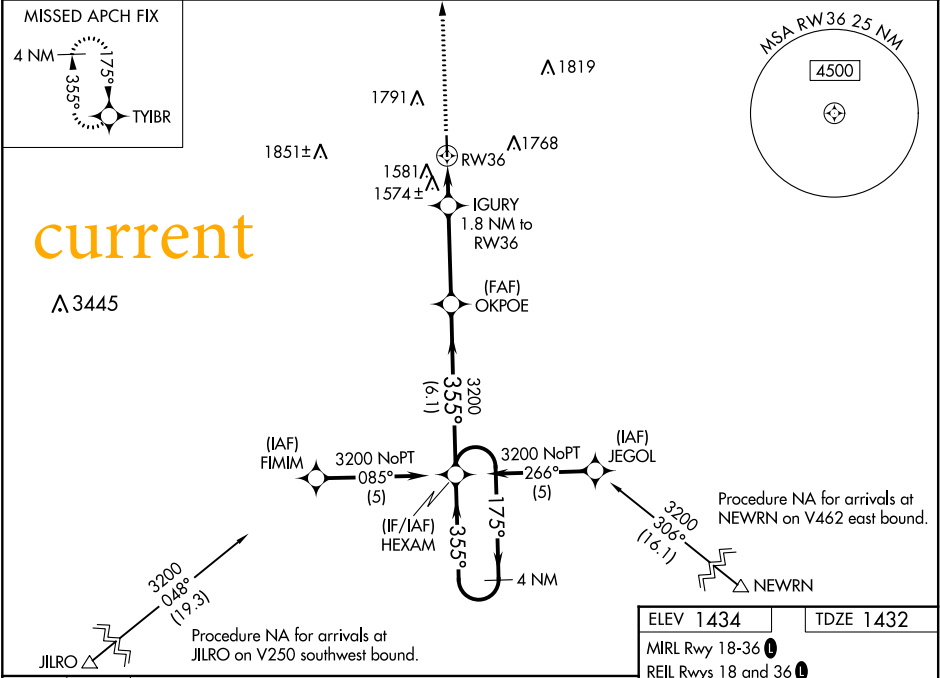
▼

▲NA

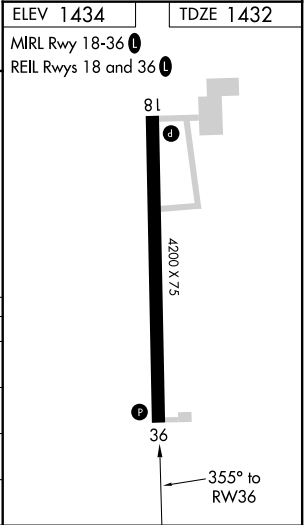
For uncompensated Baro-VNAV systems, LNAV/VNAV NA below -17°C (2°F) or above 46°C (114°F). DME/DME RNP-0.3 NA. When local altimeter setting not received, use Pipestone altimeter setting and increase all DA 94 feet and all MDA 100 feet, increase LNAV/VNAV all Cts visibility ½ mile and LNAV and Circling Cts C/D visibility ¼ mile. Baro-VNAV and VDP NA when using Pipestone altimeter setting.

MISSED APPROACH:
Climb to 3300 direct TYIBR and hold.

AWOS-3 119.825	SIoux FALLS APP CON ★ 125.8 284.725	UNICOM 122.7 (CTAF) 0
--------------------------	---	---------------------------------



3300	TYIBR	VGSI and RNAV glidepath not coincident (VGSI Angle 3.00/TCH 28).			
*LNAV only		IGURY 1.8 NM to RW36	OKPOE	HEXAM	4 NM Holding Pattern
		*1.2 NM to RW36			
		RW36			
		2040*			
		1.2 NM	0.6 NM	3.5 NM	6.1 NM
CATEGORY		A	B	C	D
LPV	DA	1632-1 200 (200-1)			
LNAV/VNAV	DA	1882-1½ 450 (500-1½)			
LNAV	MDA	1840-1 408 (500-1)	1840-1¼ 408 (500-1¼)		
CIRCLING		1940-1 506 (600-1)	2140-2 706 (800-2)	2140-2¼ 706 (800-2¼)	



NC-1, 27 JAN 2022 to 24 FEB 2022

NC-1, 27 JAN 2022 to 24 FEB 2022

Map from KLYV RNAV (GPS) RWY 18 showing new circling areas and controlling obstacles.

NEW RADII	
CAT A	1.31
CAT B	1.86
CAT C	2.92
CAT D	3.82

