

Flight Procedures Cover Page	Task Action: FLIGHT CHECK	Task Type: IAP	Estimated Chart Date: 10/03/2024	APWS Task ID: F53E21AC8750444CA199E9C0CBE9404A	APWS Project ID: 27712990B42D41FEB775B4F1680E9A80
Procedure: RNAV (GPS) RWY 4 AMDT 3		Enroute: NO	Specialist: Palmer, Leo		Agreement Number:
Airport ID: KLEX			Airport City: LEXINGTON		State: KY
Facility ID:	Facility Type:	Flight Inspection Remark Type: New FC Slot			
<div>Procedure Comments: PENDING AIRPORT AND RUNWAY DATA USED. CONTACT MANAGER: DAVE DANNER 405-954-5077</div> <div>08/23/24: THIS IS A CORRECTED COPY OF THE FORM APPROVED ON 08/09/24. 1. REMOVED CHART NOTE: INOPERATIVE TABLE DOES NOT APPLY TO LPV.</div> <div><div>QUALITY 41 CHECKED</div><div>QUALITY 10 CHECKED</div></div>					

WAAS CH 70401 W04A	APP CRS 046°	Rwy Idg TDZE Apt Elev	6604 969 980
----------------------------------------	------------------------	-----------------------------	-----------------------------------------

RNAV (GPS) RWY 4
BLUE GRASS (LEX)

RNP APCH - GPS.

⚠

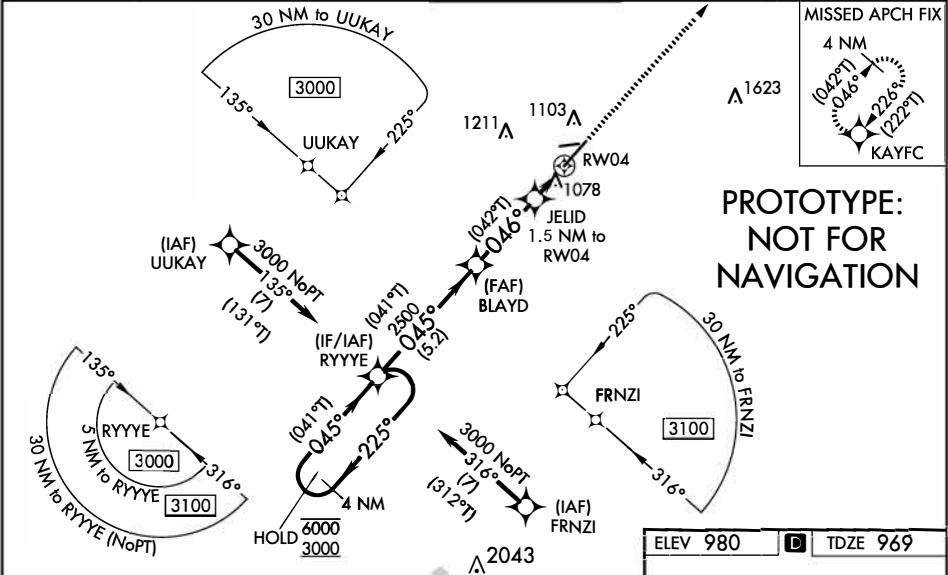
For uncompensated Baro-VNAV systems, LNAV/VNAV NA below -13°C or above 54°C. ~~Inop table does not apply to LPV.~~
For inop ALS, increase LNAV/VNAV all Cats visibility to RVR 5500, and LNAV all Cats visibility to RVR 5500.

MALSR

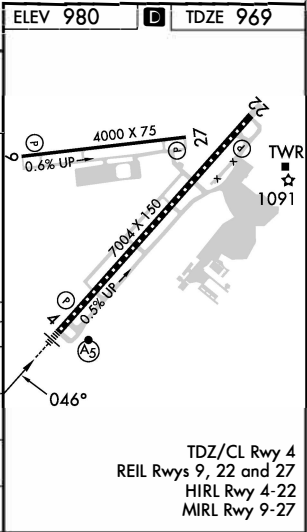
AS

MISSED APPROACH:
Climb to 3000 direct KAYFC and hold.

ATIS 126.3	LEXINGTON APP CON 120.15 259.3 (040°-220°) 120.75 298.9 (221°-039°)	LEXINGTON TOWER 119.1 257.8	GND CON 121.9	CLNC DEL 132.35
----------------------	-----------------------------------------------------------------------------------------	---------------------------------------	-------------------------	---------------------------



CATEGORY	A	B	C	D
LPV DA		1169/40	200 (200-¾)	
LNAV/VNAV DA		1340/40	371 (400-¾)	
LNAV MDA		1340/40	371 (400-¾)	
CIRCLING	1420-1 440 (500-1)	1440-1 460 (500-1)	1520-1½ 540 (600-1½)	1600-2 620 (700-2)



OLD

WAAS CH 70401 W04A	APP CRS 046°	Rwy Idg TDZE 969 Apt Elev 979	6604 969 979
----------------------------------------	------------------------	---------------------------------------------------	-----------------------------------------

RNAV (GPS) RWY 4
BLUE GRASS (LEX)

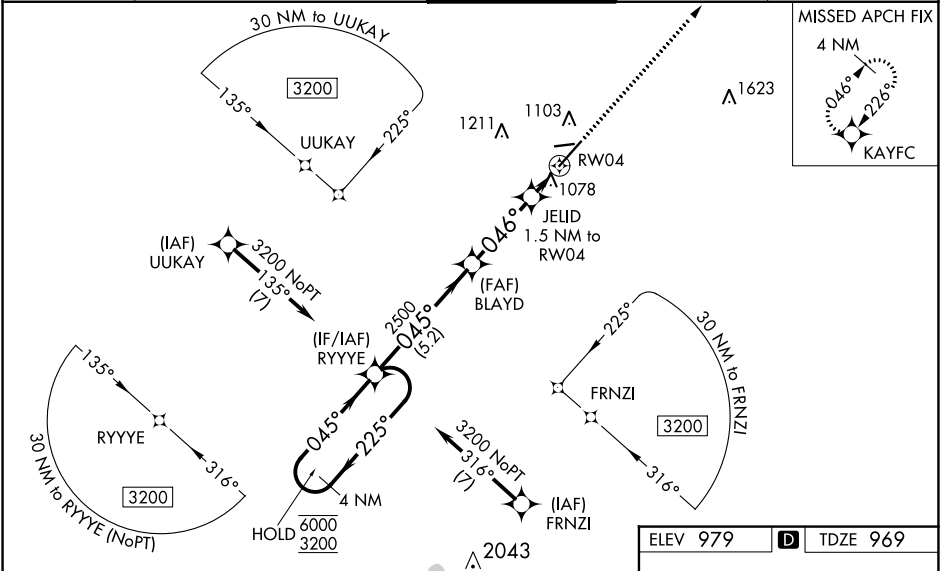
RNP APCH - GPS.

▼ For uncompensated Baro-VNAV systems, LNAV/VNAV NA below -16°C or above 54°C. For inop ALS, increase LNAV/VNAV all Cats visibility to RVR 5500, and LNAV Cats C and D visibility to RVR 5500. When local altimeter setting not received, use Frankfort altimeter setting; increase LPV DA to 1231 feet and all visibilities to RVR 2000; increase LNAV/VNAV DA to 1420 feet and all visibilities to RVR 4000; increase all MDAs 80 feet and LNAV visibility Cat C/D to RVR 4500 and Circling visibility Cat C/D ¼ SM. Baro-VNAV NA when using Frankfort altimeter setting.

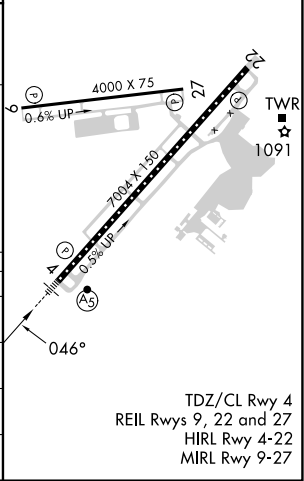
MALSR

MISSED APPROACH:
Climb to 3200 direct KAYFC and hold, continue climb-in-hold to 3200.

ATIS 126.3	LEXINGTON APP CON 120.15 259.3 (040°-220°) 120.75 298.9 (221°-039°)	LEXINGTON TOWER 119.1 257.8	GND CON 121.9	CLNC DEL 132.35
----------------------	-----------------------------------------------------------------------------------------	---------------------------------------	-------------------------	---------------------------



4 NM Holding Pattern		RYYYE	BLAYD	3200	KAYFC
6000 ← 225°		045° →	2500	1.5 NM to RW04	
3200			2500	RW04	
GP 3.00°					
TCH 60					
		5.2 NM	3.2 NM	1.5	
CATEGORY		A	B	C	D
LPV DA			1169/18	200 (200-½)	
LNAV/VNAV DA			1340/35	371 (400-¾)	
LNAV MDA		1340/24	371 (400-½)	1340/35	371 (400-¾)
CIRCLING		1420-1 441 (500-1)	1440-1 461 (500-1)	1520-1½ 541 (600-½)	1600-2 621 (700-2)



SE-1, 25 JAN 2024 to 22 FEB 2024

SE-1, 25 JAN 2024 to 22 FEB 2024

