


Flight Procedures Cover Page	Task Action: P-NOTAM	Task Type: IAP	Estimated Chart Date: 10/07/2021	APWS Task ID: F53877E3A4F643CAA9F0ADE60DB91E0A	APWS Project ID: B778B7B7D8CC4C2E8BD2F52DD0A537B0
Procedure: RNAV (GPS) RWY 2 AMDT 0C		Enroute: NO	Specialist: Lafferty, James		Agreement Number:
Airport ID: KPCD			Airport City: PERRYVILLE		State: MO
Facility ID:	Facility Type:	Flight Inspection Remark Type:			
<div> <div> Procedure Comments: P-NOTAM This Cancels FDC 0/0182 Order 8260.3, chapter 2, New Circling Criteria Applied Contact Dave Teffeteller at 202-267-5177 </div> <div>   </div> </div>					

PERRYVILLE, MISSOURI

5 (FAA)

18032

WAAS CH 93618 W02A	APP CRS 017°	Rwy Idg TDZE 370 Apt Elev 372
--	------------------------	---

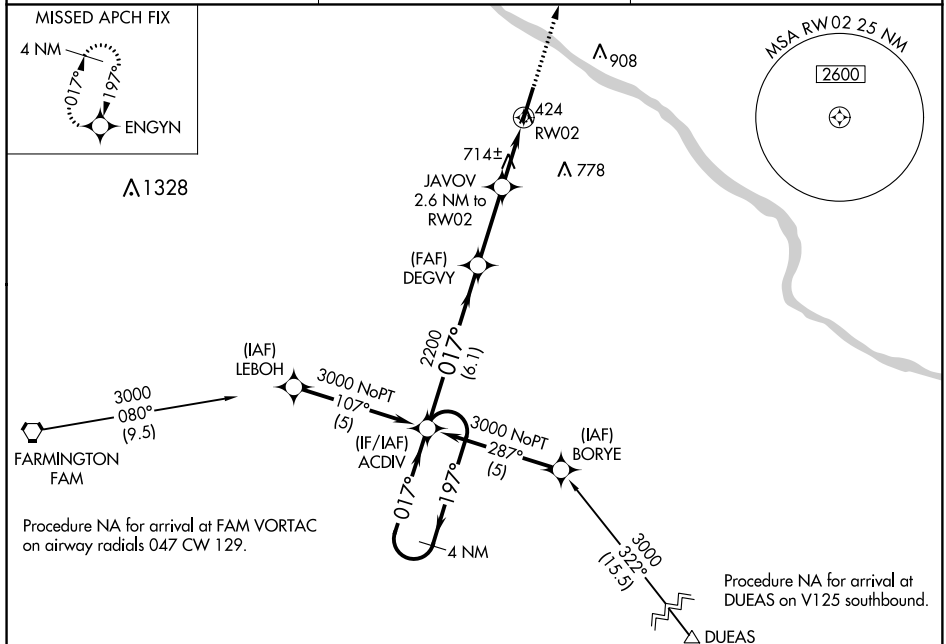
RNAV (GPS) RWY 2

PERRYVILLE RGNL (PCD)

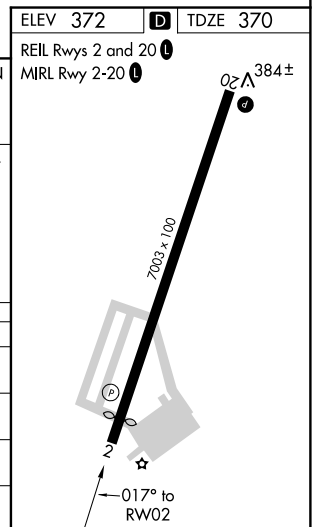
⚠ For uncompensated Baro-VNAV systems, LNAV/VNAV NA below -15°C (5°F) or above 48°C (118°F). DME/DME RNP-0.3 NA.
Rwy 2 helicopter visibility reduction below $\frac{3}{4}$ SM NA.

MISSED APPROACH: Climb to 3000 direct ENGVN and hold.

AWOS-3PT 118.95	KANSAS CITY CENTER 127.475 346.275	UNICOM 122.8 (CTAF) 0
---------------------------	--	---------------------------------



4 NM Holding Pattern	ACDIV	DEGVY	JAVOV 2.6 NM to RWY02	3000	ENGYN
3000	197°	017°	2200	1.8 NM to RWY02	*LNAV only
GP 3.00° TCH 45	017°	017°	2200	0.8	
	6.1 NM	2.9 NM	0.8	1.8 NM	
CATEGORY	A	B	C	D	
LPV DA		1123-3	753 (800-3)		
LNAV/VNAV DA		1186-3	816 (900-3)		
LNAV MDA	980-1	610 (700-1)	980-1 $\frac{3}{4}$	610 (700-1 $\frac{3}{4}$)	
CIRCLING	980-1	608 (700-1)	1000-1 $\frac{3}{4}$ 628 (700-1 $\frac{3}{4}$)	1100-2 $\frac{1}{4}$ 728 (800-2 $\frac{1}{4}$)	



PERRYVILLE, MISSOURI
Orig-A 02MAR17

37°52'N-89°52'W

PERRYVILLE RGNL (PCD)
RNAV (GPS) RWY 2

NC-3, 18 JUN 2020 to 16 JUL 2020

