

Flight Procedures Cover Page	Task Action: P-NOTAM	Task Type: IAP	Estimated Chart Date: 11/30/2023	APWS Task ID: F46BE1CC914942D78953D1CC01E50B66	APWS Project ID: E7059DCB3FC1429D8DBE6D6FE7AF9E7C
Procedure: RNAV (GPS) RWY 9 AMDT 1A		Enroute: NO	Specialist: Melton, William		Agreement Number:
Airport ID: KVES			Airport City: VERSAILLES		State: OH
Facility ID:	Facility Type:	Flight Inspection Remark Type:			
<div>Procedure Comments: CLEARs FDC 3/6590. PENDING DATA USED FOR KVES. PROCESSED IAW TECHNICAL SUPPORT GROUP (AJF-17) MEMO DATED 07/07/2021, SUBJECT: GUIDANCE FOR PROCEDURAL CHANGES REQUIRING FLIGHT INSPECTION/VALIDATION. CONTACT JASON KRETSCHMER (405) 954-4019.</div> <div><div>Digitally signed by <b>JASON KRETSCHMER</b> Sep 22, 2023</div><div><div>07/19/2023</div><div><div>QUALITY 14 CHECKED</div><div>QUALITY 33 CHECKED</div></div></div></div>					

WAAS CH <b>77642</b> <b>W09A</b>	APP CRS <b>092°</b>	Rwy Idg TDZE <b>1007</b> Apt Elev <b>1007</b>
--	------------------------	---



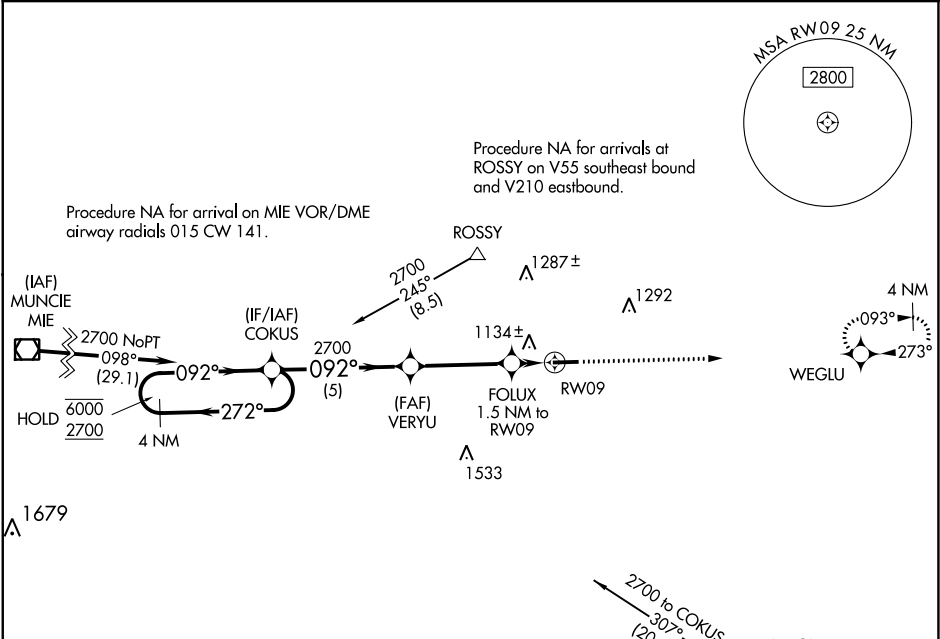
RNAV (GPS) RWY 9  
DARKE COUNTY (VES)

RNP APCH.

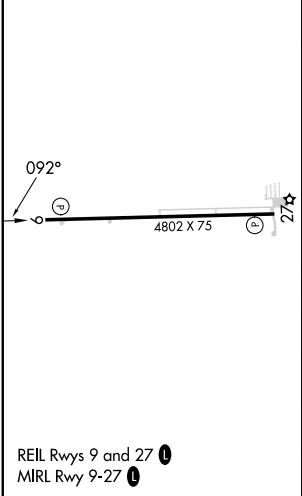
Circling Rwy 27 NA at night. Rwy 9 helicopter visibility reduction below ¾ SM NA.  
For uncompensated Baro-VNAV systems, LNAV/VNAV NA below -16° C or above 54° C.

MISSED APPROACH:  
Climb to 2700 direct  
WGLU and hold.

AWOS-3PT <b>125.9</b>	COLUMBUS APP CON <b>118.425 352.05</b>	UNICOM <b>122.8 (CTAF) 0</b>
--------------------------	---	---------------------------------



ELEV 1007	TDZE 1007
-----------	-----------



4 NM Holding Pattern				2700	WGLU
COKUS				VERYU	
6000 ← 272°				2700	
2700 → 092°					
GP 3.00° TCH 44				FOLUX 1.5 NM to RW09	*LNAV only.
				*1540	
				5 NM	3.6 NM
				1.5 NM	
CATEGORY	A	B	C	D	
LPV DA	1257-1 250 (300-1)			NA	
LNAV/VNAV DA	1400-1 393 (400-1 3/8)			NA	
LNAV MDA	1400-1 393 (400-1)		1400-1 393 (400-1 3/8)	NA	
CIRCLING	1440-1 433 (500-1)	1480-1 473 (500-1)	1660-1 653 (700-1 3/4)	NA	

EC-2, 07 SEP 2023 to 05 OCT 2023

EC-2, 07 SEP 2023 to 05 OCT 2023