

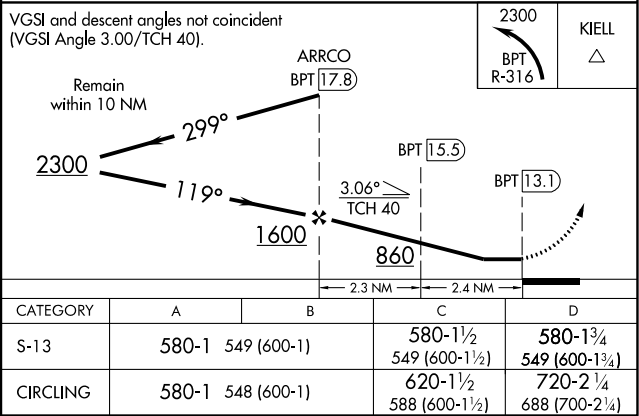
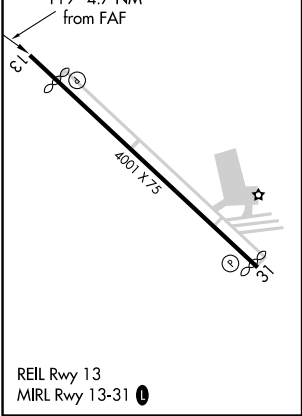
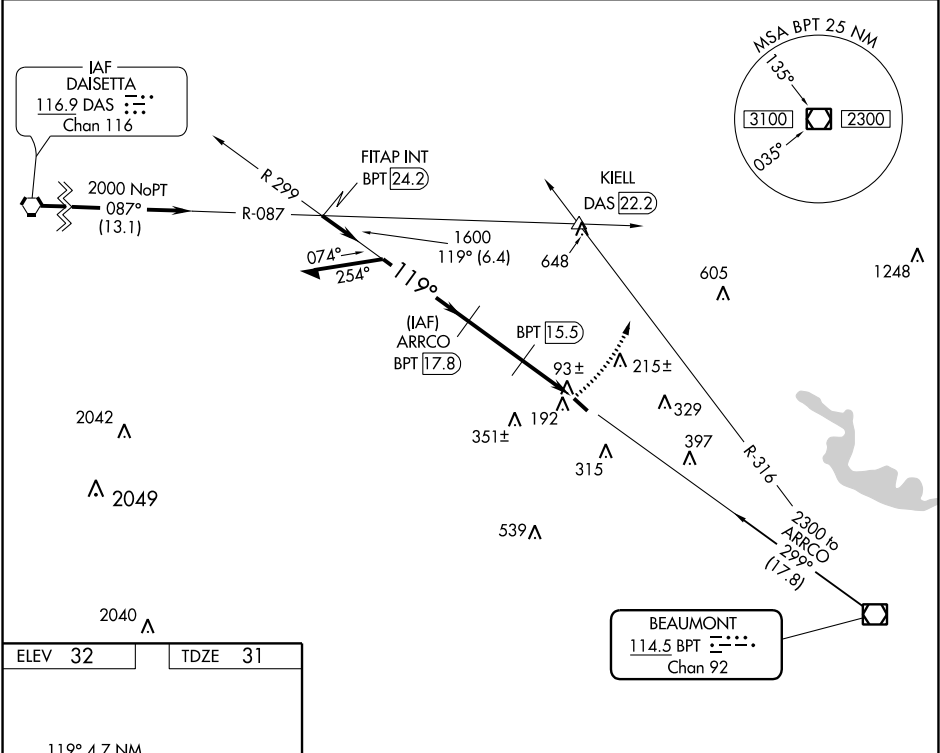
Flight Procedures Cover Page	Task Action: Amendment	Task Type: IAP	Estimated Chart Date: 04/23/2020	APWS Task ID: F4257AE7214A4B0F898FDB50B7CC6C90	APWS Request ID: B4262BE5F51F4A1BA7EAF2B02836242
Procedure: APPROACH VOR/DME RWY 13 AMDT 3D		Enroute: NO	Specialist: Sarmiento, April		Agreement Number:
Airport ID: KBMT	Airport Name: BEAUMONT MUNI		Airport City: BEAUMONT		State: TX
Facility ID:	Facility Type:	Flight Inspection Remark Type:			
<div>Procedure Comments:</div> <div>P-NOTAM.</div> <div>NEW CIRCLING AREAS.</div> <div>PROCESSED IAW AIRCRAFT OPERATIONS GROUP (AJW-33) MEMO, OCTOBER 3, 2018, SUBJECT: FLIGHT INSPECTION REVIEW NOT REQUIRED.</div> <div>CONTACT DAVE DANNER 405-954-5077.</div> <div>QUALITY 12 CHECKED</div> <div>QUALITY 10 CHECKED</div>					

VOR/DME BPT	APP CRS	Rwy Idg	3669
114.5	119°	TDZE	31
Chan 92		Apt Elev	32

VOR/DME RWY 13
BEAUMONT MUNI (BMT)

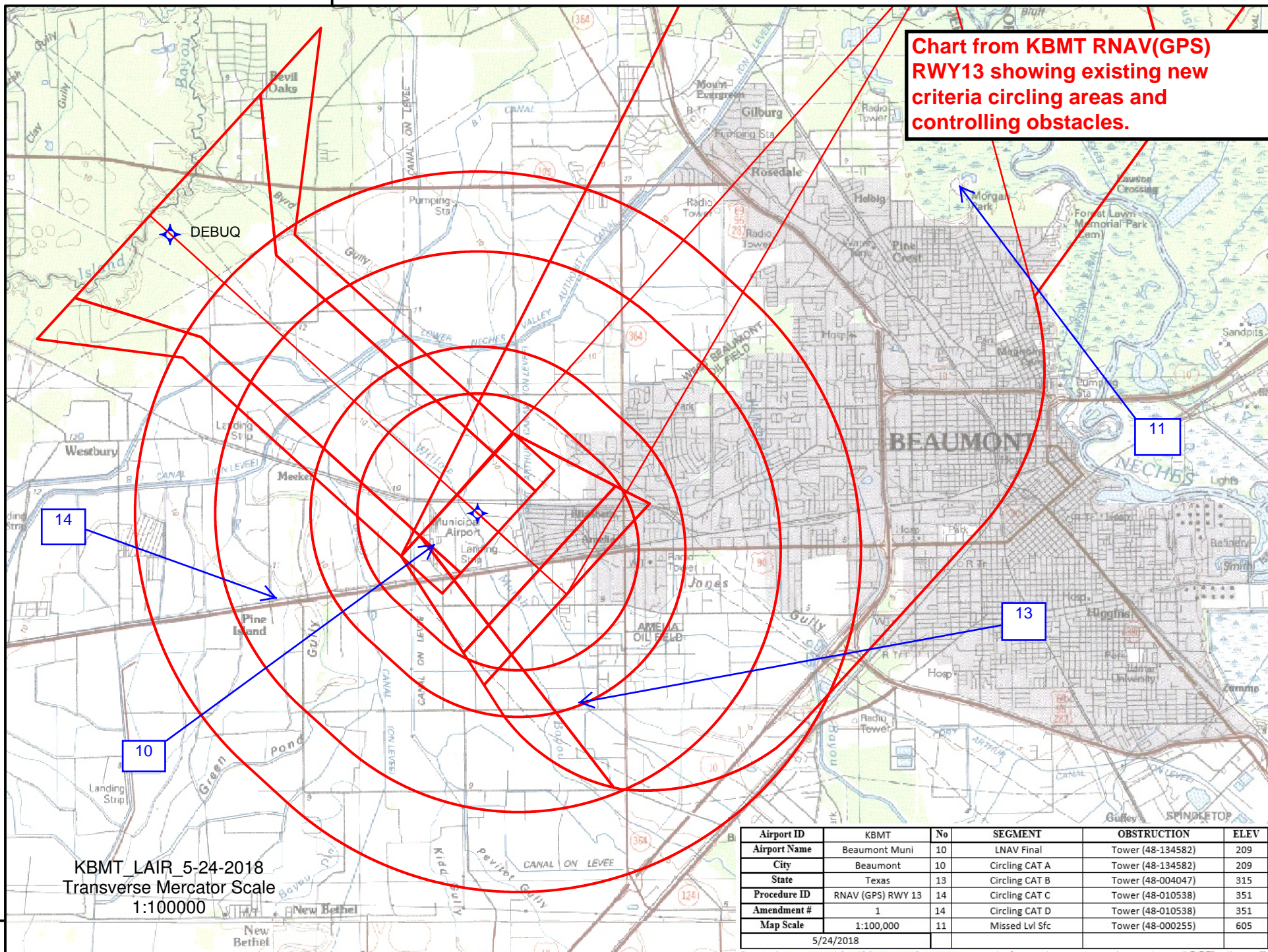
<p>▼ Use Beaumont-Port Arthur, TX (Jack Brooks Rgnl) altimeter setting. Circling NA Rwy 16-34. Visibility reduction by helicopters NA.</p> <p>▲ NA</p>	MISSED APPROACH: Climbing left turn to 2300 via BPT R-316 to KIELL INT/DAS 22.2 DME.
--------------------------------------------------------------------------------------------------------------------------------------------------------	--------------------------------------------------------------------------------------

AWOS-3P/T	HOUSTON APP CON	CLNC DEL	UNICOM
118.425	121.3 377.1	121.75	123.0 (CTAF) 0



94°15'0"W

Chart from KBMT RNAV(GPS)
RWY13 showing existing new
criteria circling areas and
controlling obstacles.



30°10'N