

Flight Procedures Cover Page	Task Action: P-NOTAM	Task Type: IAP	Estimated Chart Date: 09/07/2023	APWS Task ID: F3FE048220DD4AA9953ACFE31BFBF7D3	APWS Project ID: 263C733904804E56AA0BC59541BCCCE2
Procedure: RNAV (GPS) RWY 9L AMDT 1D		Enroute: NO	Specialist: Boone-walt, Rose		Agreement Number:
Airport ID: KSBN			Airport City: SOUTH BEND		State: IN
Facility ID:	Facility Type:	Flight Inspection Remark Type:			
<div>Procedure Comments: UPDATED HELICOPTER VISIBILITY NOTE AND CIRC RESTRICTION TO RWY 27R</div> <div>Processed IAW Technical Support Group (AJF-17) Memo dated 07/07/2021, Subject: Guidance for Procedural Changes Requiring Flight Inspection/Validation</div> <div>CONTACT: JASON KRETSCHMER AJV-A421 LEAD: 405.954.4019</div> <div><div>Digitally signed by JASON KRETSCHMER Jul 20, 2023</div><div>07/14/2023</div></div>					

QUALITY
9
CHECKED
BEGUE

QUALITY
14
CHECKED

OLD

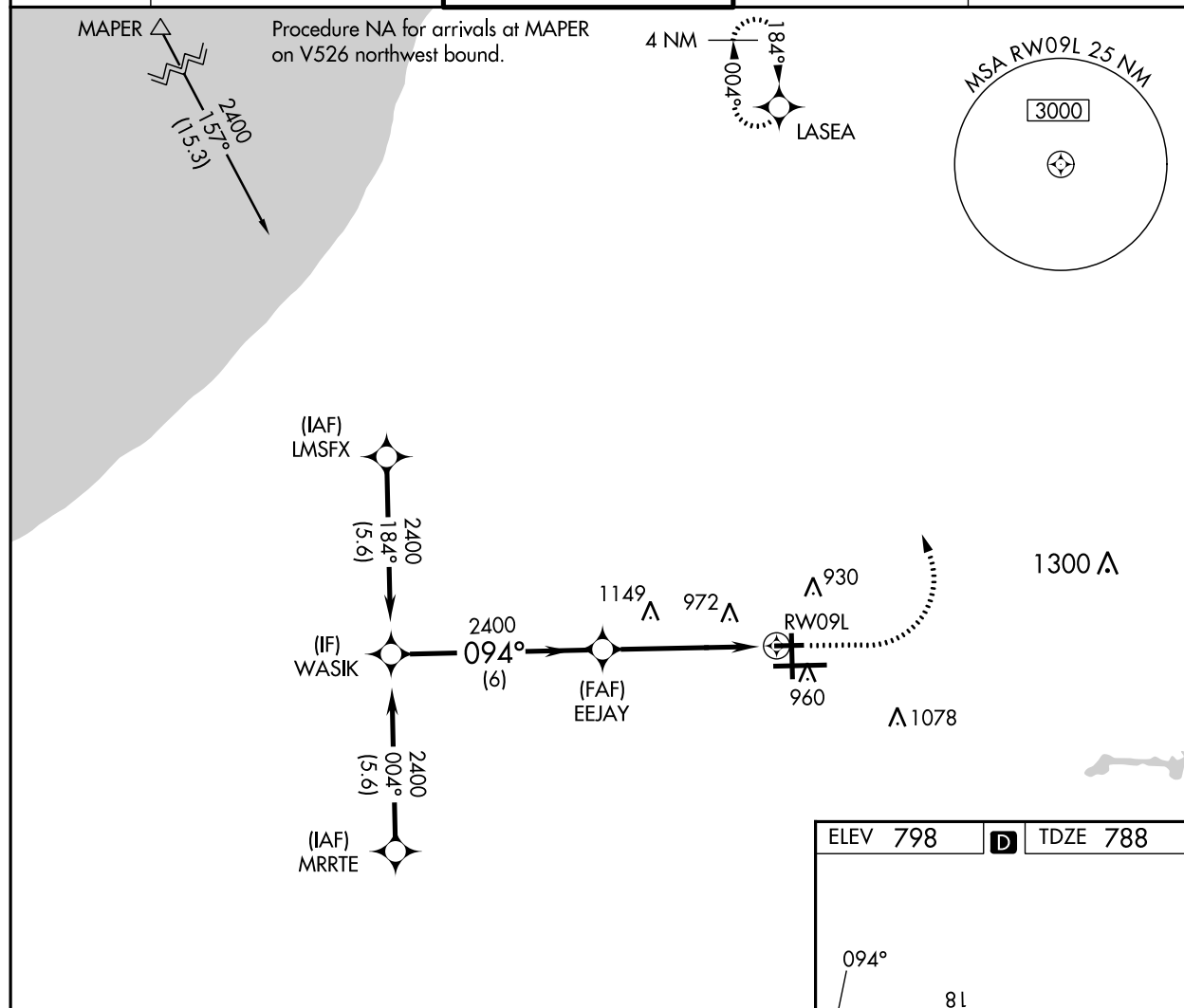
23110

RNAV (GPS) RWY 9L
SOUTH BEND INTL (SBN)

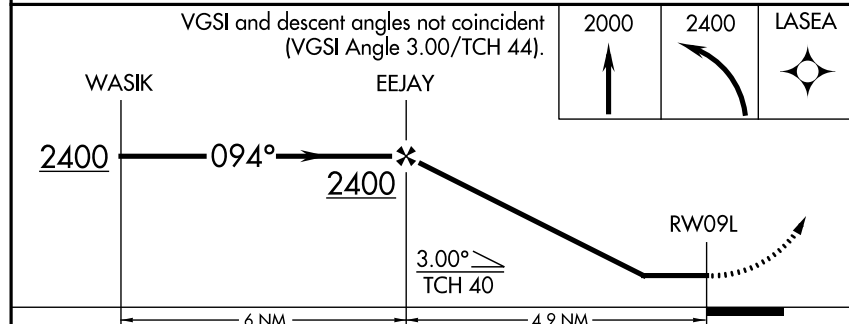
MISSED APPROACH: Climb to 2000 then climbing left turn to 2400 direct LASEA and hold.


T	Rwy 9L helicopter visibility reduction below 1 SM NA. Circling Rwy 27R
A	NA at night. Straight-in and Circling Rwy 9L NA at night.

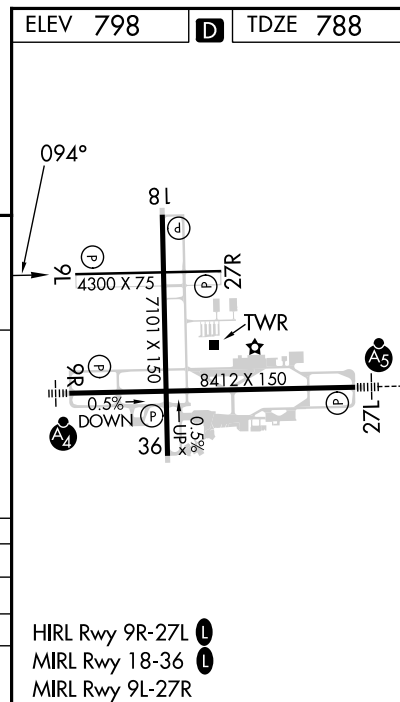
ATIS 120.675	SOUTH BEND APP CON★ 118.55 257.8	SOUTH BEND TOWER★ 135.675 (CTAF) 0 257.8	GND CON 121.7	CLNC DEL 121.9
------------------------	--	--	-------------------------	--------------------------



VGSI and descent angles not coincident
(VGSI Angle 3.00/TCH 44).



CATEGORY	A	B	C	D
LP MDA	1240-1	452 (500-1)	1240-1 $\frac{3}{8}$	452 (500-1 $\frac{3}{8}$)
LNAV MDA	1240-1	452 (500-1)	1240-1 $\frac{3}{8}$	452 (500-1 $\frac{3}{8}$)
 CIRCLING	1280-1	482 (500-1)	1440-1 $\frac{3}{4}$ 642 (700-1 $\frac{3}{4}$)	1500-2 $\frac{1}{4}$ 702 (800-2 $\frac{1}{4}$)



SOUTH BEND INTL (SBN)
RNAV (GPS) RWY 9L

EC-2, 15 JUN 2023 to 13 JUL 2023