

DME DME Assessment Results for FATHE1 path KMCO:RW35L:DER_VIYAP

Results Summary

Flyability:	Completed
DME/DME:	Completed - No Critical DMEs
Name:	Miles CTR Carpenter
Project File:	C:\Users\Miles CTR Carpenter\Desktop\KMCO SIDs DME\KMCO FATHE SID DME\KMCO FATHE 20200817.tgs
Output File:	C:\Users\Miles CTR Carpenter\Desktop\KMCO SIDs DME\KMCO FATHE SID DME\KMCO [IFPA] FATHE1 20200827_1100 EDT\KMCO-RW35L-DER_VIYAP\KMCO FATHE1 SID KMCO RW35L VIYAP 20200827_1100 EDT.pdf
Procedure Name:	FATHE1
Software: DmeDmePlugin:	6.1.0
Date/Time:	08/27/2020 11:00 EDT
Databases:	DTED 0max

Failures

No Failures

Warnings

No Warnings

Notes For Flight Check

None

Flight Plan

Name	Type	Lat/Lon	Altitude (ft)	VNAV Mode	Ground Speed (kts)	Turn Type	Leg Type
KMCO:RW35L:DER	WP	N28° 26' 08.203", W081° 17' 45.166"	90.1	VNAV	130	FLY_BY	TF
JWOLF	WP	N28° 30' 51.680", W081° 15' 12.470"	2000	VNAV	200	FLY_BY	TF
JIRAN	WP	N28° 32' 57.240", W081° 15' 03.580"	2500	VNAV	200	FLY_BY	TF
BIGSE	WP	N28° 35' 00.480", W081° 15' 08.800"	3000	VNAV	200	FLY_BY	TF
BUFFI	WP	N28° 50' 26.350", W081° 17' 18.070"	6000	VNAV	200	FLY_BY	TF
FATHE	WP	N28° 59' 26.220", W081° 18' 04.200"	8000	VNAV	200	FLY_BY	TF
MDBOG	WP	N29° 06' 22.800", W081° 18' 50.510"	9000	VNAV	200	FLY_BY	TF
BKENI	WP	N29° 38' 17.840", W081° 20' 45.890"	15000	VNAV	240	FLY_BY	TF
VIYAP	WP	N31° 15' 08.150", W081° 26' 08.180"	18000	VNAV	240	FLY_BY	TF

Climb Gradient:
500.0 ft/NM up to 600.0 ft MSL
200.0 ft/NM

Flyability

Flight Type:	SID
Selected Airport:	KMCO [IFPA]
Climb Gradient:	500.0 ft/NM up to 600.0 ft MSL 200.0 ft/NM
Speeds:	130 at the Runway DER
	145 at the end of the VA or VI leg
	200 Ground Speed to 11000 FT
	240 Ground Speed to 18000 FT
	260 Ground Speed to 24000 FT
	340 Ground Speed above 24000 FT
Descent During a Turn:	Allowed
VNAV Mode:	Flight Plan

DME DME Assessment Results for FATHE1 path KMCO:RW35L:DER_VIYAP

DME/DME	
RNP:	RNP 2
Flight Mode:	Manual
Line of Sight (DTED Level 0 Max):	Evaluated
Inertial Drift:	Enabled
Initial Drift:	0.558 NM
INS Drift Rate:	8.0 NM/Hour
Range Mode:	OSV
RNP Edges:	Evaluated
Min DME Range:	3.0 NM
DME Types:	DME, VOR-DME, VORTAC
DME Include Angles:	30 to 150
Critical DMEs:	Not Allowed
DoD Facilities:	Not included
Foreign Facilities:	Included
High DMEs:	Included
Low DMEs:	Included
Terminal DMEs:	Included
Flight Check DMEs:	Not selected
Higher Altitudes:	Not Evaluated
Near Maximum Altitude:	Not Evaluated
Automatic ESVs:	Not enabled
Disabled DMEs:	None

DME/DME (Continued)										
DMEs Used										
#	Name	Lat/Lon	MAGVAR	Range	Type	Source	Critical	Status	Time	Distance
1	TAY	N30° 30' 16.696", W082° 33' 10.452"	3.0 W	130	H	IFPA	NO	Enabled	53.1 %	58.1 %
2	SSI	N31° 03' 01.851", W081° 26' 45.465"	4.0 W	40	L	IFPA	NO	Enabled	23.1 %	25.3 %
3	CRG	N30° 20' 19.965", W081° 30' 35.738"	3.0 W	130	H	IFPA	NO	Enabled	51.3 %	56.1 %
4	OMN	N29° 18' 11.707", W081° 06' 45.706"	0.0 E	130	H	IFPA	NO	Enabled	71.1 %	72.7 %
5	GNV	N29° 41' 31.613", W082° 16' 22.701"	4.0 W	40	L	IFPA	NO	Enabled	11.5 %	10.5 %
6	CTY	N29° 35' 56.403", W083° 02' 55.651"	2.0 W	40	L	IFPA	NO	Enabled	38.9 %	39.5 %
7	SAV	N32° 08' 46.563", W081° 11' 56.780"	6.0 W	130	H	IFPA	NO	Enabled	24.3 %	26.6 %
8	MLB	N28° 06' 19.120", W080° 38' 06.460"	7.0 W	40	L	IFPA	NO	Enabled	23.7 %	21.6 %
9	AMG	N31° 32' 11.598", W082° 30' 29.120"	0.0 E	130	H	IFPA	NO	Enabled	33 %	36.2 %
10	ORL	N28° 32' 33.802", W081° 20' 06.053"	0.0 E	130	H	IFPA	NO	Enabled	40.1 %	40 %

DME DME Assessment Results for FATHE1 path KMCO:RW35L:DER_VIYAP

Flight Check DME Selection						
Distance [NM]	Selected DMEs					Alternate
0.0						
14.7	MLB	ORL				
15.1	MLB	ORL	OMN			
29.5	GNV	OMN	MLB	ORL		
32.7	GNV	OMN	MLB	CTY	ORL	
46.7	MLB	OMN	GNV	CTY		
47.3	MLB	OMN	CTY			
51.4						
63.8	CTY	OMN				
70.6	CTY	CRG	OMN			
70.9	CTY	ORL	CRG	OMN		
71.1	CTY	ORL	CRG	OMN	TAY	
106.9	TAY	OMN	CTY	CRG		
108.2	TAY	OMN	CTY	CRG	AMG	
112.2	TAY	OMN	AMG			
112.6	TAY	OMN	CRG	AMG		
113.5	TAY	OMN	AMG			
116.8	OMN	CRG	TAY	AMG		
118.0	SSI	TAY	OMN	CRG	AMG	
150.8	SSI	TAY	AMG	CRG	SAV	
153.5	AMG	SAV	CRG	TAY		
154.6	AMG	SAV	CRG	TAY	SSI	
154.8	AMG	SAV	CRG	TAY		
162.2	AMG	SAV	SSI	CRG	TAY	

Inertial Drift Segments			
#	Start Location	End Location	Length [NM]
1	N28° 26' 10.318", W081° 17' 45.188"	N28° 40' 11.316", W081° 15' 52.127"	14.677
2	N29° 16' 50.046", W081° 19' 28.168"	N29° 29' 17.377", W081° 20' 13.205"	12.4417

Available DMEs by Waypoints		
Waypoint Before	Waypoint After	DME List
KMCO:RW35L:DER	JWOLF	
JWOLF	JIRAN	
JIRAN	BIGSE	
BIGSE	BUFFI	OMN, MLB, ORL
BUFFI	FATHE	OMN, MLB, ORL, CTY, GNV
FATHE	MDBOG	OMN, MLB, ORL, CTY, GNV
MDBOG	BKENI	OMN, MLB, ORL, CTY, CRG, TAY, GNV
BKENI	VIYAP	OMN, ORL, SSI, CRG, CTY, SAV, AMG, TAY

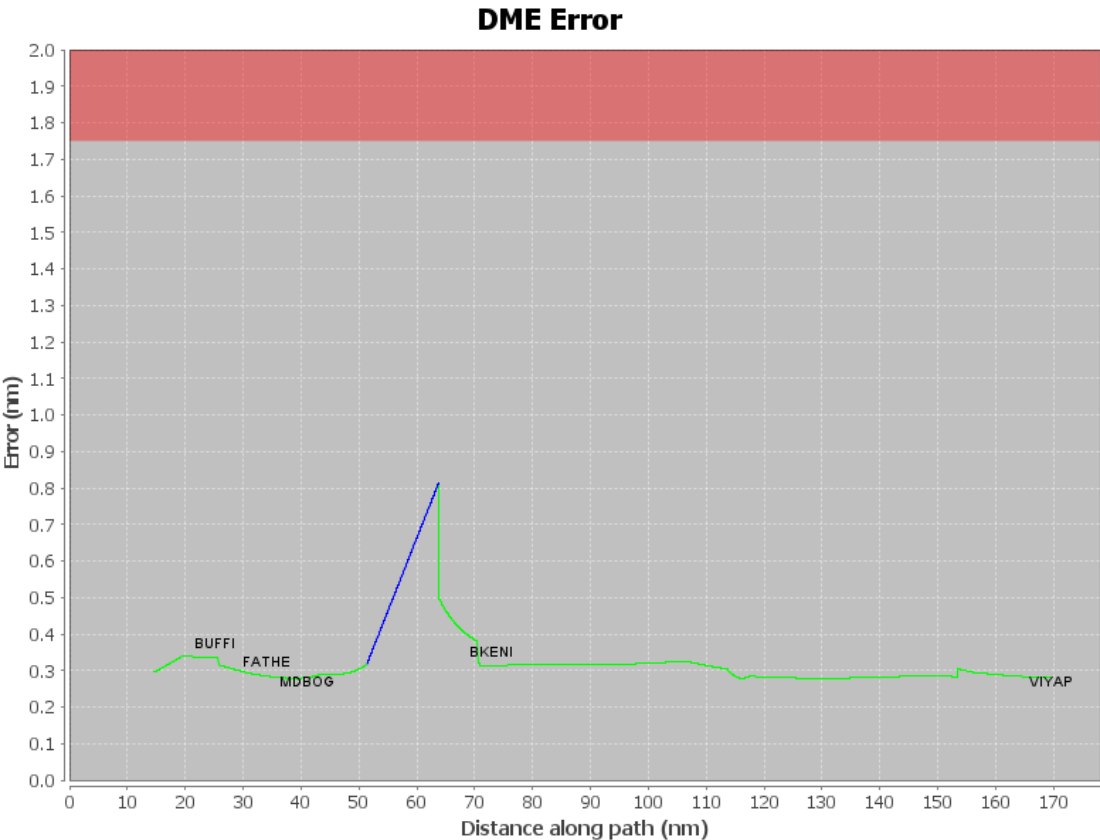
DME DME Assessment Results for FATHE1 path KMCO:RW35L:DER_VIYAP

User Data Files

#	File Name
1	UserDMEsKMCO [IFPA] FATHE1 SID_20200716_0817 EDT.udt

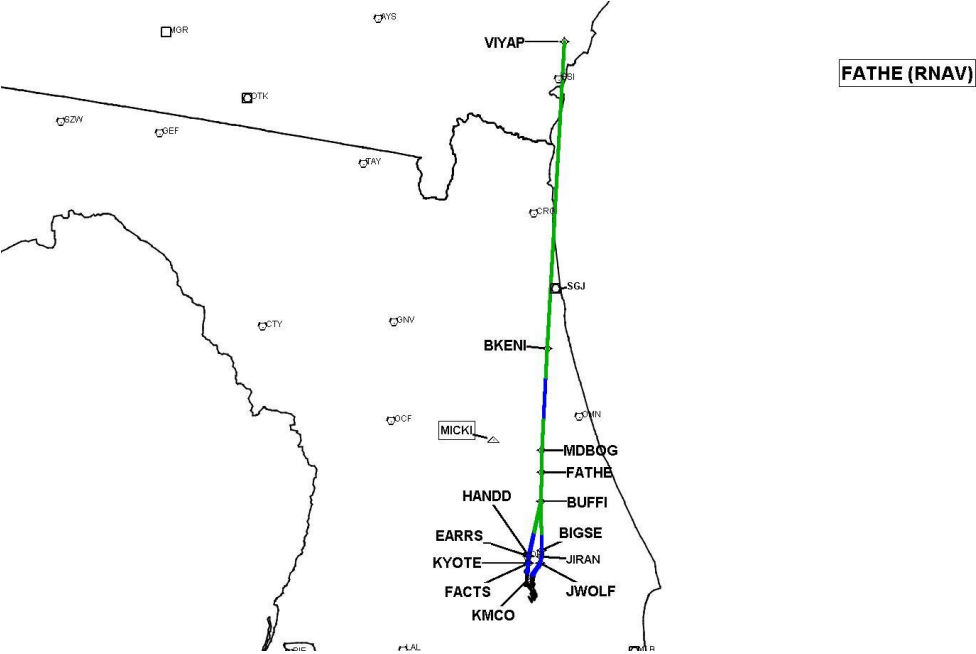
User DMEs

#	Name	Lat/Lon	MAGVAR	Range	Elevation [ft]	Frequency	Replaces	Status
1	MLB FAA 815809-23 MLB [IFPA]	N28° 06' 19.120", W080° 38' 06.460"	7.0 W	40	34	110.0	MLB FAA 815809-23	
ESV:		Bearing [True]: 297.0° to 10.0° Bearing [Mag]: 304.0° to 17.0°				Arc Distance: Out to 81.0 NM Altitude: 4000.0 to 18000.0 ft		
2	CTY FAA 704013-052 CTY [IFPA]	N29° 35' 56.403", W083° 02' 55.651"	2.0 W	40	55.8	112.0	CTY FAA 704013-052	
ESV:		Bearing [True]: 63.0° to 143.0° Bearing [Mag]: 65.0° to 145.0°				Arc Distance: Out to 106.0 NM Altitude: 7700.0 to 16500.0 ft		
3	GNV FAA 704230-048 GNV [IFPA]	N29° 41' 31.613", W082° 16' 22.701"	4.0 W	40	160.8	116.2	GNV FAA 704230-048	
ESV:		Bearing [True]: 116.0° to 141.0° Bearing [Mag]: 120.0° to 145.0°				Arc Distance: Out to 72.0 NM Altitude: 5000.0 to 10200.0 ft		



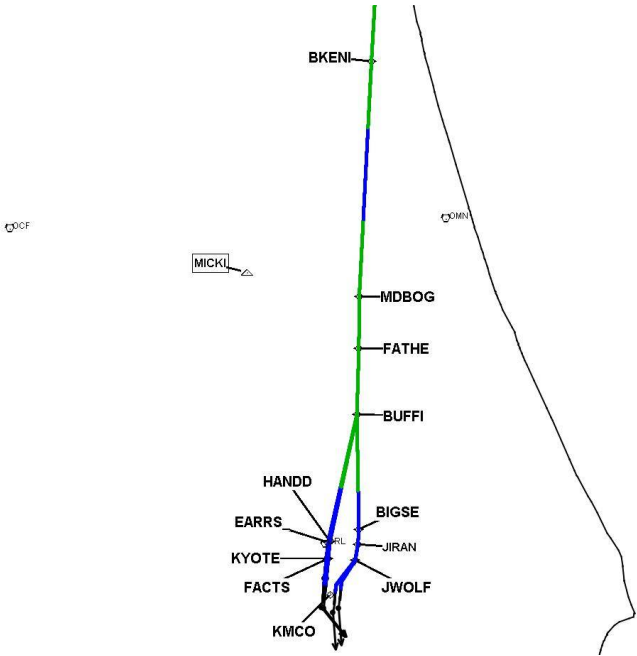
DME DME Assessment Results for FATHE1 path KMCO:RW35L:DER_VIYAP

Graphic Depiction 1



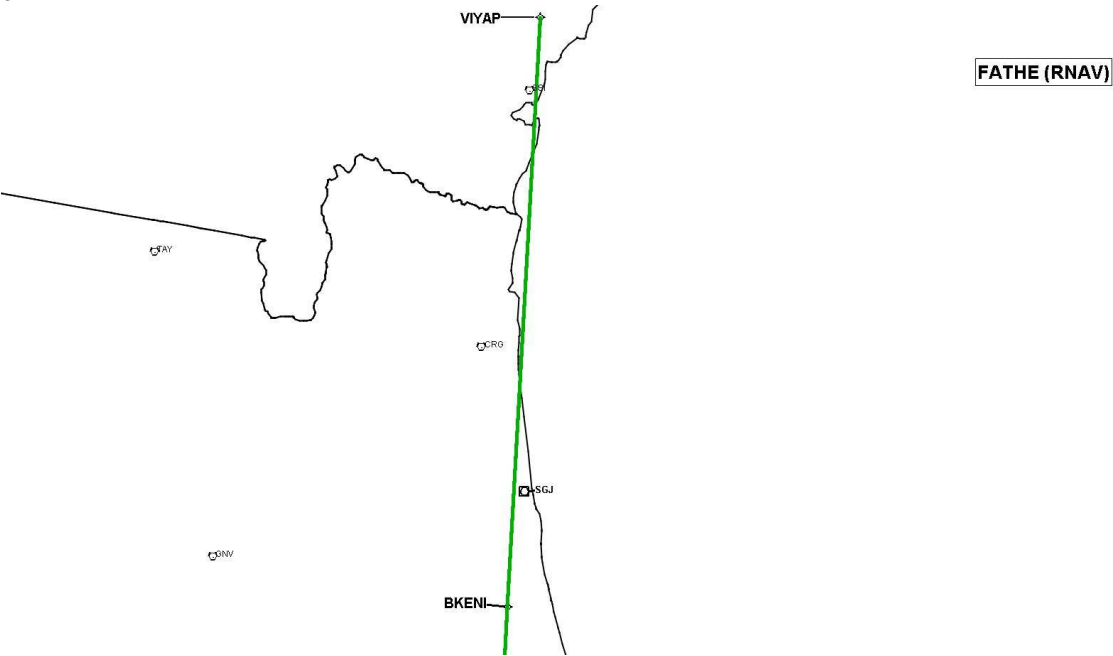
DME DME Assessment Results for FATHE1 path KMCO:RW35L:DER_VIYAP

Graphic Depiction 2



DME DME Assessment Results for FATHE1 path KMCO:RW35L:DER_VIYAP

Graphic Depiction 3



DME DME Assessment Results for FATHE1 path KMCO:RW35R:DER_JWOLF

Results Summary

Flyability:	Completed
DME/DME:	Completed - No Critical DMEs
Name:	Miles CTR Carpenter
Project File:	C:\Users\Miles CTR Carpenter\Desktop\KMCO SIDs DME\KMCO FATHE SID DME\KMCO FATHE 20200817.tgs
Output File:	C:\Users\Miles CTR Carpenter\Desktop\KMCO SIDs DME\KMCO FATHE SID DME\KMCO [IFPA] FATHE1 20200827_1100 EDT\KMCO-RW35R-DER_JWOLF\KMCO FATHE1 SID KMCO RW35R JWOLF 20200827_1100 EDT.pdf
Procedure Name:	FATHE1
Software: DmeDmePlugin:	6.1.0
Date/Time:	08/27/2020 11:00 EDT
Databases:	DTED 0max

Failures

No Failures

Warnings

No Warnings

Notes For Flight Check

None

Flight Plan

Name	Type	Lat/Lon	Altitude (ft)	VNAV Mode	Ground Speed (kts)	Turn Type	Leg Type
KMCO:RW35R:DER	WP	N28° 26' 37.308", W081° 16' 57.292"	89.7	VNAV	130	FLY_BY	TF
JWOLF	WP	N28° 30' 51.680", W081° 15' 12.470"	2000	VNAV	200	FLY_BY	TF
Climb Gradient: 500.0 ft/NM up to 600.0 ft MSL 200.0 ft/NM							

Flyability

Flight Type:	SID
Selected Airport:	KMCO [IFPA]
Climb Gradient:	500.0 ft/NM up to 600.0 ft MSL 200.0 ft/NM
Speeds:	130 at the Runway DER
	145 at the end of the VA or VI leg
	200 Ground Speed to 11000 FT
	240 Ground Speed to 18000 FT
	260 Ground Speed to 24000 FT
	340 Ground Speed above 24000 FT
Descent During a Turn:	Allowed
VNAV Mode:	Flight Plan

DME DME Assessment Results for FATHE1 path KMCO:RW35R:DER_JWOLF

DME/DME	
RNP:	RNP 2
Flight Mode:	Manual
Line of Sight (DTED Level 0 Max):	Evaluated
Inertial Drift:	Enabled
Initial Drift:	0.558 NM
INS Drift Rate:	8.0 NM/Hour
Range Mode:	OSV
RNP Edges:	Evaluated
Min DME Range:	3.0 NM
DME Types:	DME, VOR-DME, VORTAC
DME Include Angles:	30 to 150
Critical DMEs:	Not Allowed
DoD Facilities:	Not included
Foreign Facilities:	Included
High DMEs:	Included
Low DMEs:	Included
Terminal DMEs:	Included
Flight Check DMEs:	Not selected
Higher Altitudes:	Not Evaluated
Near Maximum Altitude:	Not Evaluated
Automatic ESVs:	Not enabled
Disabled DMEs:	None

DME/DME (Continued)										
DMEs Used										
#	Name	Lat/Lon	MAGVAR	Range	Type	Source	Critical	Status	Time	Distance

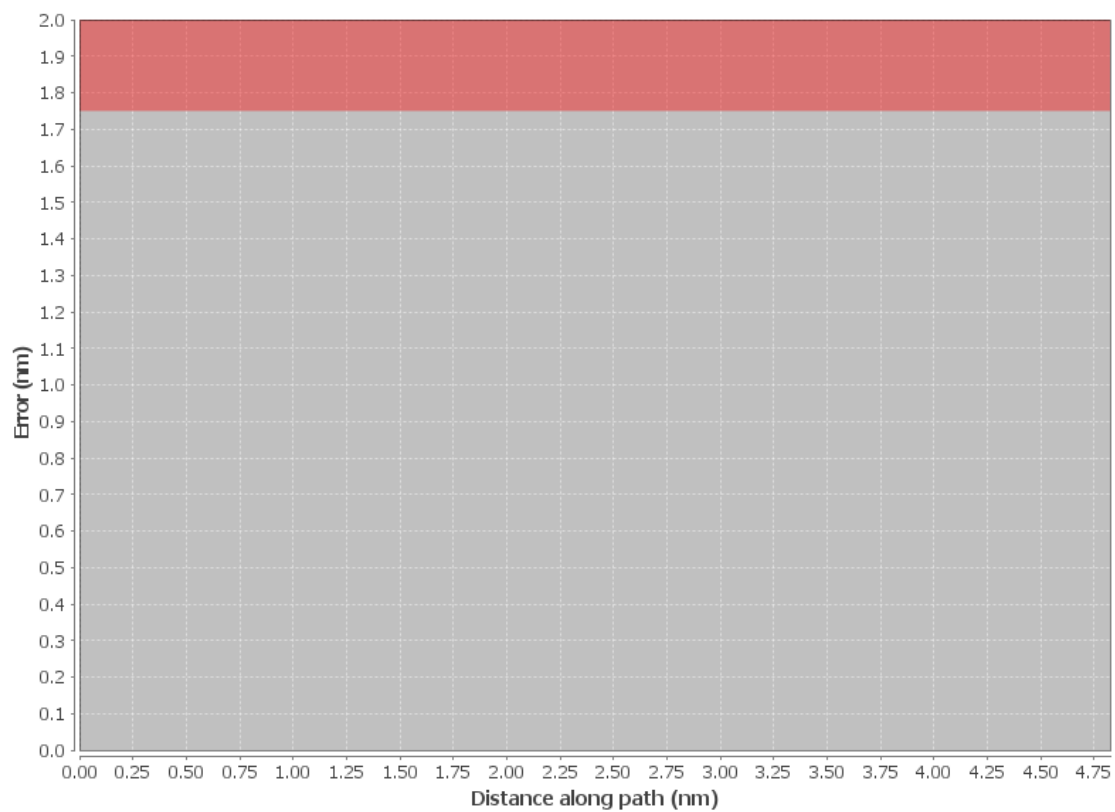
Flight Check DME Selection						
Distance [NM]	Selected DMEs					Alternate
0.0						

Inertial Drift Segments			
#	Start Location	End Location	Length [NM]
1	N28° 26' 39.425", W081° 16' 57.314"	N28° 30' 51.680", W081° 15' 12.470"	4.5629

Available DMEs by Waypoints		
Waypoint Before	Waypoint After	DME List
KMCO:RW35R:DER	JWOLF	

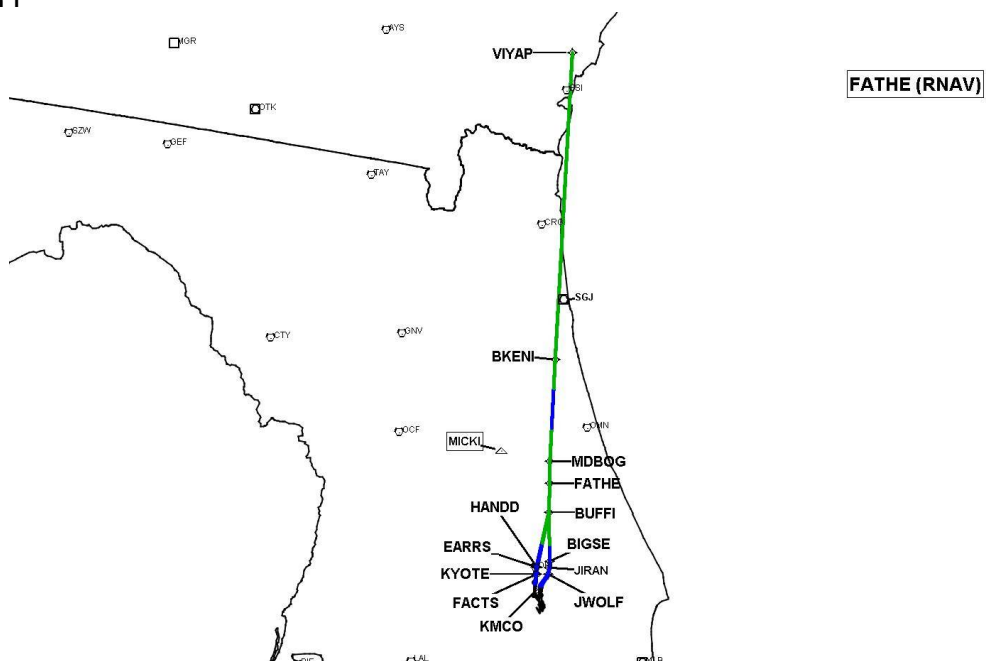
User Data Files								
#	File Name							
1	UserDMEsKMCO [IFPA] FATHE1 SID_20200716_0817 EDT.udt							
User DMEs								
#	Name	Lat/Lon	MAGVAR	Range	Elevation [ft]	Frequency	Replaces	Status
1	MLB FAA 815809-23 MLB [IFPA]	N28° 06' 19.120", W080° 38' 06.460"	7.0 W	40	34	110.0	MLB FAA 815809-23	
ESV:		Bearing [True]: 297.0° to 10.0° Bearing [Mag]: 304.0° to 17.0°				Arc Distance: Out to 81.0 NM Altitude: 4000.0 to 18000.0 ft		
2	CTY FAA 704013-052 CTY [IFPA]	N29° 35' 56.403", W083° 02' 55.651"	2.0 W	40	55.8	112.0	CTY FAA 704013-052	
ESV:		Bearing [True]: 63.0° to 143.0° Bearing [Mag]: 65.0° to 145.0°				Arc Distance: Out to 106.0 NM Altitude: 7700.0 to 16500.0 ft		
3	GNV FAA 704230-048 GNV [IFPA]	N29° 41' 31.613", W082° 16' 22.701"	4.0 W	40	160.8	116.2	GNV FAA 704230-048	
ESV:		Bearing [True]: 116.0° to 141.0° Bearing [Mag]: 120.0° to 145.0°				Arc Distance: Out to 72.0 NM Altitude: 5000.0 to 10200.0 ft		

DME Error



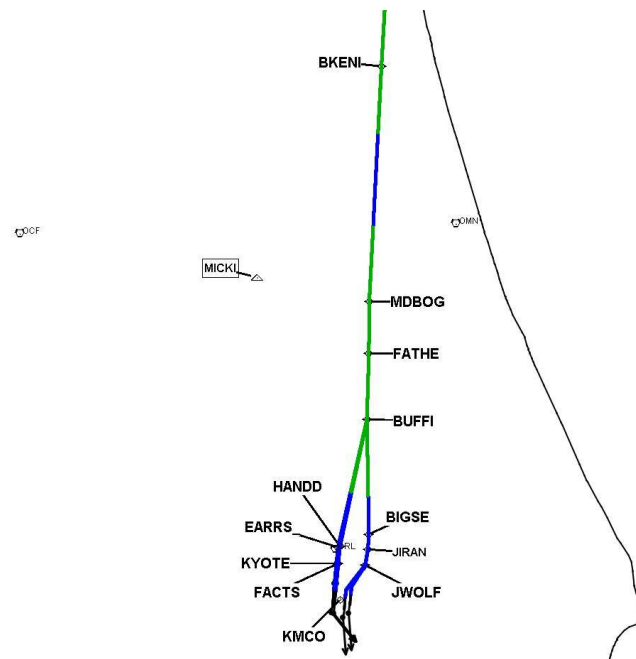
DME DME Assessment Results for FATHE1 path KMCO:RW35R:DER_JWOLF

Graphic Depiction 1



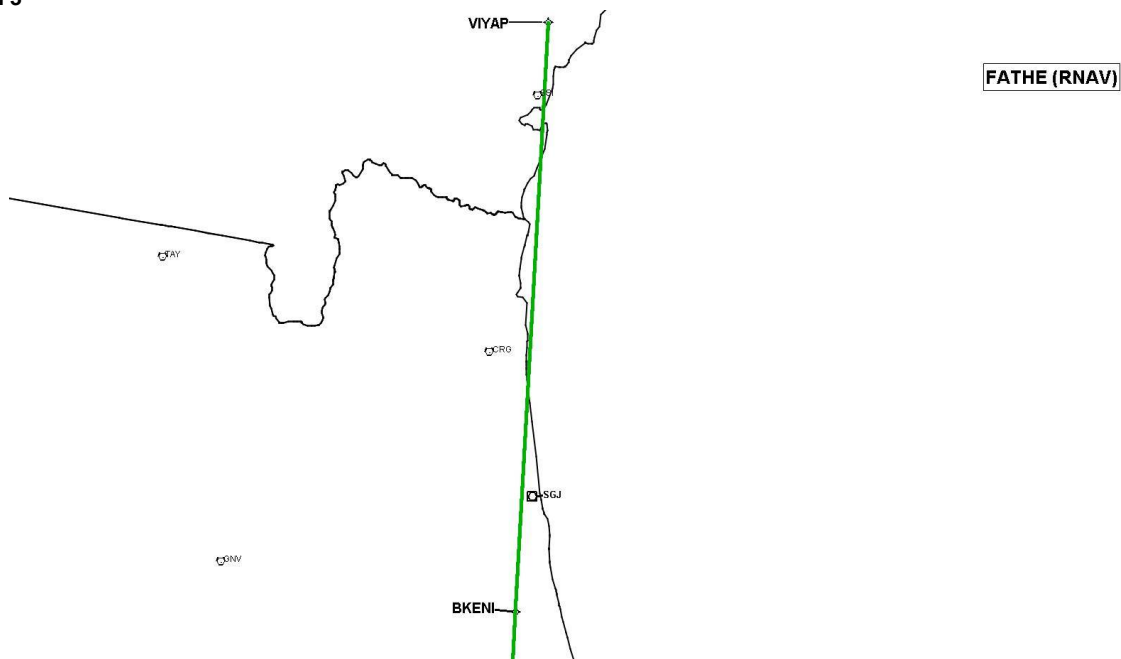
DME DME Assessment Results for FATHE1 path KMCO:RW35R:DER_JWOLF

Graphic Depiction 2



DME DME Assessment Results for FATHE1 path KMCO:RW35R:DER_JWOLF

Graphic Depiction 3



DME DME Assessment Results for FATHE1 path KMCO:RW36L:DER_BUFFI

Results Summary

Flyability:	Completed
DME/DME:	Completed - No Critical DMEs
Name:	Miles CTR Carpenter
Project File:	C:\Users\Miles CTR Carpenter\Desktop\KMCO SIDs DME\KMCO FATHE SID DME\KMCO FATHE1 SID DME 4.29.2020.tgs
Output File:	C:\Users\Miles CTR Carpenter\Desktop\KMCO SIDs DME\KMCO FATHE SID DME\KMCO [IFPA] FATHE1 20200429_1102 EDT\KMCO-RW36L-DER_BUFFI\KMCO FATHE1 SID KMCO RW36L BUFFI 20200429_1102 EDT.pdf
Procedure Name:	FATHE1
Software: DmeDmePlugin:	6.1.0
Date/Time:	04/29/2020 11:02 EDT
Databases:	DTED 0max

Failures

No Failures

Warnings

No Warnings

Notes For Flight Check

None

Flight Plan

Name	Type	Lat/Lon	Altitude (ft)	VNAV Mode	Ground Speed (kts)	Turn Type	Leg Type
KMCO:RW36L:DER	WP	N28° 26' 53.857", W081° 19' 37.109"	92.5	VNAV	130	FLY_OVER	TF
KYOTE	WP	N28° 30' 35.800", W081° 19' 39.500"	2000	VNAV	230	FLY_BY	TF
EARRS	WP	N28° 32' 47.620", W081° 19' 40.520"	2500	VNAV	230	FLY_BY	TF
BUFFI	WP	N28° 50' 26.350", W081° 17' 18.070"	6000	VNAV	200	FLY_BY	TF
Climb Gradient: 500.0 ft/NM up to 597.0 ft MSL 200.0 ft/NM							

Flyability

Flight Type:	SID
Selected Airport:	KMCO [IFPA]
Climb Gradient:	500.0 ft/NM up to 597.0 ft MSL 200.0 ft/NM
Speeds:	130 at the Runway DER
	145 at the end of the VA or VI leg
	200 Ground Speed to 11000 FT
	240 Ground Speed to 18000 FT
	260 Ground Speed to 24000 FT
	340 Ground Speed above 24000 FT
Descent During a Turn:	Allowed
VNAV Mode:	Flight Plan

DME DME Assessment Results for FATHE1 path KMCO:RW36L:DER_BUFFI

DME/DME	
RNP:	RNP 2
Flight Mode:	Manual
Line of Sight (DTED Level 0 Max):	Evaluated
Inertial Drift:	Enabled
Initial Drift:	0.558 NM
INS Drift Rate:	8.0 NM/Hour
Range Mode:	OSV
RNP Edges:	Evaluated
Min DME Range:	3.0 NM
DME Types:	DME, VOR-DME, VORTAC
DME Include Angles:	30 to 150
Critical DMEs:	Not Allowed
DoD Facilities:	Not included
Foreign Facilities:	Not included
High DMEs:	Included
Low DMEs:	Included
Terminal DMEs:	Included
Flight Check DMEs:	Not selected
Higher Altitudes:	Not Evaluated
Near Maximum Altitude:	Not Evaluated
Automatic ESVs:	Enabled
Disabled DMEs:	None

DME/DME (Continued)										
DMEs Used										
#	Name	Lat/Lon	MAGVAR	Range	Type	Source	Critical	Status	Time	Distance
1	OMN	N29° 18' 11.707", W081° 06' 45.706"	0.0 E	130	H	IFPA	NO	Enabled	40.3 %	42.7 %
2	MLB	N28° 06' 19.120", W080° 38' 06.460"	7.0 W	40	L	IFPA	NO	Enabled	40.3 %	42.7 %
3	ORL	N28° 32' 33.802", W081° 20' 06.053"	0.0 E	130	H	IFPA	NO	Enabled	40.3 %	42.7 %

Flight Check DME Selection						
Distance [NM]	Selected DMEs					Alternate
0.0						
13.5	MLB	OMN	ORL			

Inertial Drift Segments			
#	Start Location	End Location	Length [NM]
1	N28° 26' 55.981", W081° 19' 37.132"	N28° 40' 24.637", W081° 18' 39.128"	13.5117

Available DMEs by Waypoints		
Waypoint Before	Waypoint After	DME List
KMCO:RW36L:DER	KYOTE	
KYOTE	EARRS	
EARRS	BUFFI	OMN, MLB, ORL

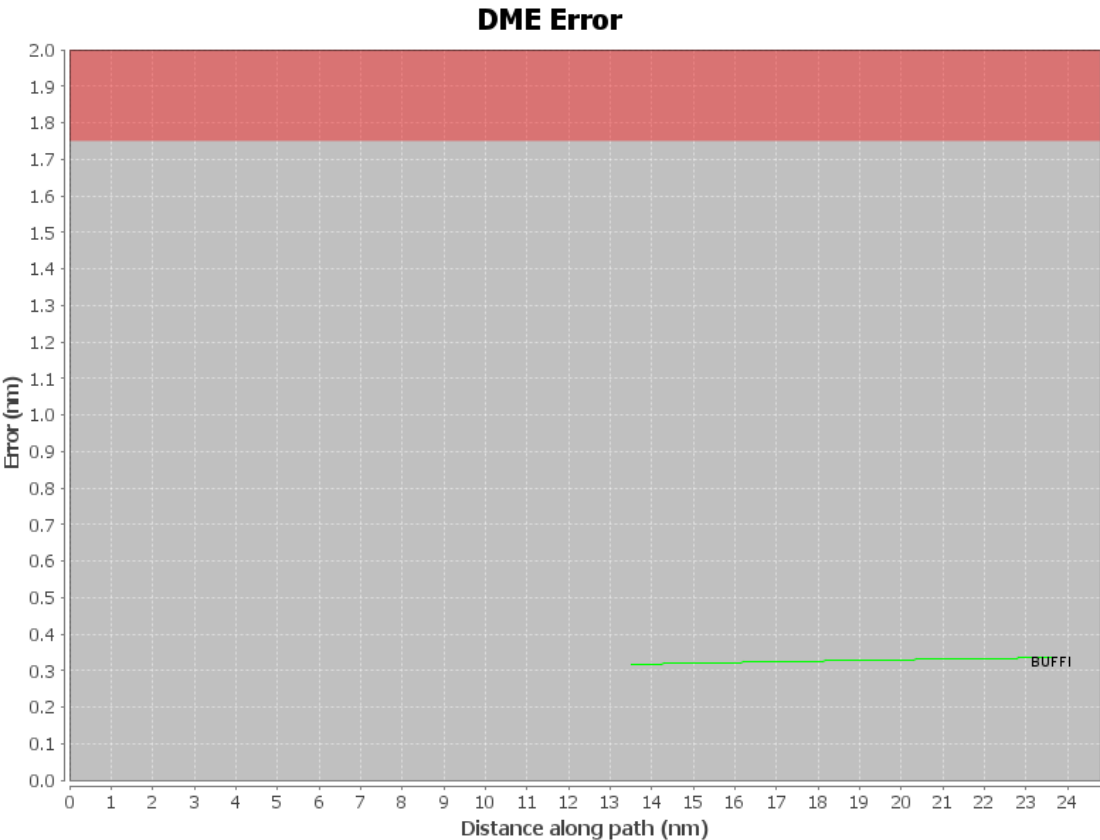
DME DME Assessment Results for FATHE1 path KMCO:RW36L:DER_BUFFI

User Data Files

#	File Name
1	New Analysis.udt

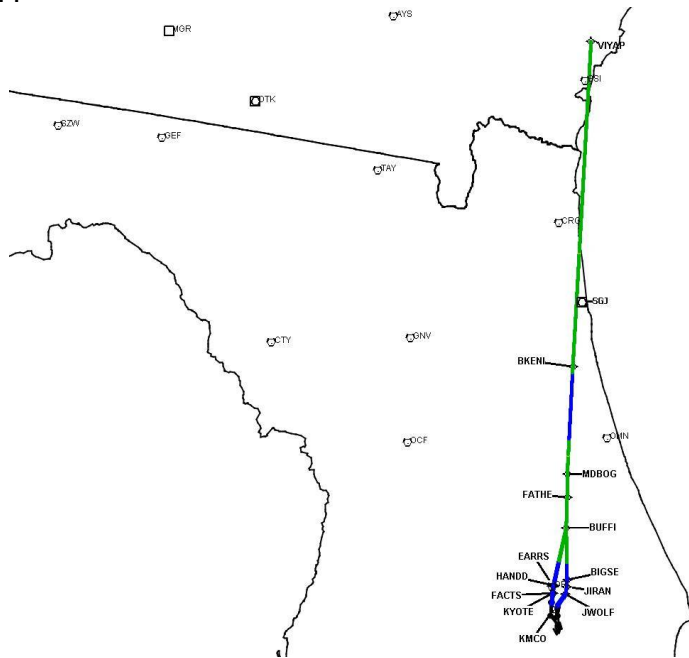
User DMEs

#	Name	Lat/Lon	MAGVAR	Range	Elevation [ft]	Frequency	Replaces	Status
1	GNV GNV [IFPA]	N29° 41' 31.613", W082° 16' 22.701"	4.0 W	40	160.8	116.2	GNV	
ESV:		Bearing [True]: 118.0° to 135.0° Bearing [Mag]: 122.0° to 139.0°				Arc Distance: Out to 72.0 NM Altitude: 6900.0 to 10200.0 ft		
2	MLB FAA 815809-23 MLB [IFPA]	N28° 06' 19.120", W080° 38' 06.460"	7.0 W	40	34	110.0	MLB FAA 815809-23	
ESV:		Bearing [True]: 297.0° to 10.0° Bearing [Mag]: 304.0° to 17.0°				Arc Distance: Out to 81.0 NM Altitude: 4000.0 to 18000.0 ft		
3	CTY CTY [IFPA]	N29° 35' 56.403", W083° 02' 55.651"	2.0 W	40	55.8	112.0	CTY	
ESV:		Bearing [True]: 66.0° to 84.0° Bearing [Mag]: 68.0° to 86.0°				Arc Distance: Out to 98.0 NM Altitude: 15100.0 to 16200.0 ft		



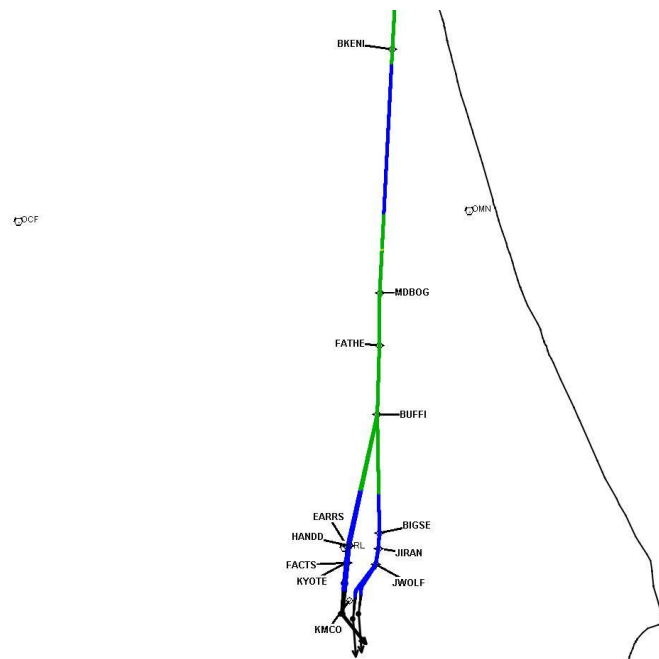
DME DME Assessment Results for FATHE1 path KMCO:RW36L:DER_BUFFI

Graphic Depiction 1



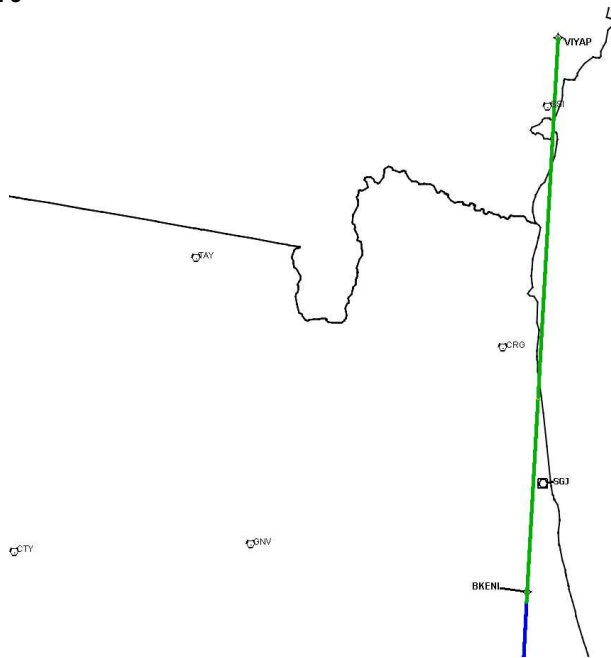
DME DME Assessment Results for FATHE1 path KMCO:RW36L:DER_BUFFI

Graphic Depiction 2



DME DME Assessment Results for FATHE1 path KMCO:RW36L:DER_BUFFI

Graphic Depiction 3



DME DME Assessment Results for FATHE1 path KMCO:RW36R:DER_BUFFI

Results Summary

Flyability:	Completed
DME/DME:	Completed - No Critical DMEs
Name:	Miles CTR Carpenter
Project File:	C:\Users\Miles CTR Carpenter\Desktop\KMCO SIDs DME\KMCO FATHE SID DME\KMCO FATHE 20200817.tgs
Output File:	C:\Users\Miles CTR Carpenter\Desktop\KMCO SIDs DME\KMCO FATHE SID DME\KMCO [IFPA] FATHE1 20200827_1100 EDT\KMCO-RW36R-DER_BUFFI\KMCO FATHE1 SID KMCO RW36R BUFFI 20200827_1100 EDT.pdf
Procedure Name:	FATHE1
Software: DmeDmePlugin:	6.1.0
Date/Time:	08/27/2020 11:00 EDT
Databases:	DTED 0max

Failures

No Failures

Warnings

No Warnings

Notes For Flight Check

None

Flight Plan

Name	Type	Lat/Lon	Altitude (ft)	VNAV Mode	Ground Speed (kts)	Turn Type	Leg Type
KMCO:RW36R:DER	WP	N28° 26' 54.004", W081° 19' 20.302"	92.4	VNAV	130	FLY_OVER	TF
FACTS	WP	N28° 30' 39.750", W081° 19' 22.710"	2000	VNAV	230	FLY_BY	TF
HANDD	WP	N28° 32' 54.380", W081° 19' 23.950"	2500	VNAV	230	FLY_BY	TF
BUFFI	WP	N28° 50' 26.350", W081° 17' 18.070"	6000	VNAV	200	FLY_BY	TF
Climb Gradient: 500.0 ft/NM up to 597.0 ft MSL 200.0 ft/NM							

Flyability

Flight Type:	SID
Selected Airport:	KMCO [IFPA]
Climb Gradient:	500.0 ft/NM up to 597.0 ft MSL 200.0 ft/NM
Speeds:	130 at the Runway DER
	145 at the end of the VA or VI leg
	200 Ground Speed to 11000 FT
	240 Ground Speed to 18000 FT
	260 Ground Speed to 24000 FT
	340 Ground Speed above 24000 FT
Descent During a Turn:	Allowed
VNAV Mode:	Flight Plan

DME DME Assessment Results for FATHE1 path KMCO:RW36R:DER_BUFFI

DME/DME	
RNP:	RNP 2
Flight Mode:	Manual
Line of Sight (DTED Level 0 Max):	Evaluated
Inertial Drift:	Enabled
Initial Drift:	0.558 NM
INS Drift Rate:	8.0 NM/Hour
Range Mode:	OSV
RNP Edges:	Evaluated
Min DME Range:	3.0 NM
DME Types:	DME, VOR-DME, VORTAC
DME Include Angles:	30 to 150
Critical DMEs:	Not Allowed
DoD Facilities:	Not included
Foreign Facilities:	Included
High DMEs:	Included
Low DMEs:	Included
Terminal DMEs:	Included
Flight Check DMEs:	Not selected
Higher Altitudes:	Not Evaluated
Near Maximum Altitude:	Not Evaluated
Automatic ESVs:	Not enabled
Disabled DMEs:	None

DME/DME (Continued)										
DMEs Used										
#	Name	Lat/Lon	MAGVAR	Range	Type	Source	Critical	Status	Time	Distance
1	OMN	N29° 18' 11.707", W081° 06' 45.706"	0.0 E	130	H	IFPA	NO	Enabled	40 %	42.4 %
2	MLB	N28° 06' 19.120", W080° 38' 06.460"	7.0 W	40	L	IFPA	NO	Enabled	40 %	42.4 %
3	ORL	N28° 32' 33.802", W081° 20' 06.053"	0.0 E	130	H	IFPA	NO	Enabled	40 %	42.4 %

Flight Check DME Selection						
Distance [NM]	Selected DMEs					Alternate
0.0						
13.6	MLB	OMN	ORL			

Inertial Drift Segments			
#	Start Location	End Location	Length [NM]
1	N28° 26' 56.128", W081° 19' 20.325"	N28° 40' 27.956", W081° 18' 29.761"	13.5534

Available DMEs by Waypoints		
Waypoint Before	Waypoint After	DME List
KMCO:RW36R:DER	FACTS	
FACTS	HANDD	
HANDD	BUFFI	OMN, MLB, ORL

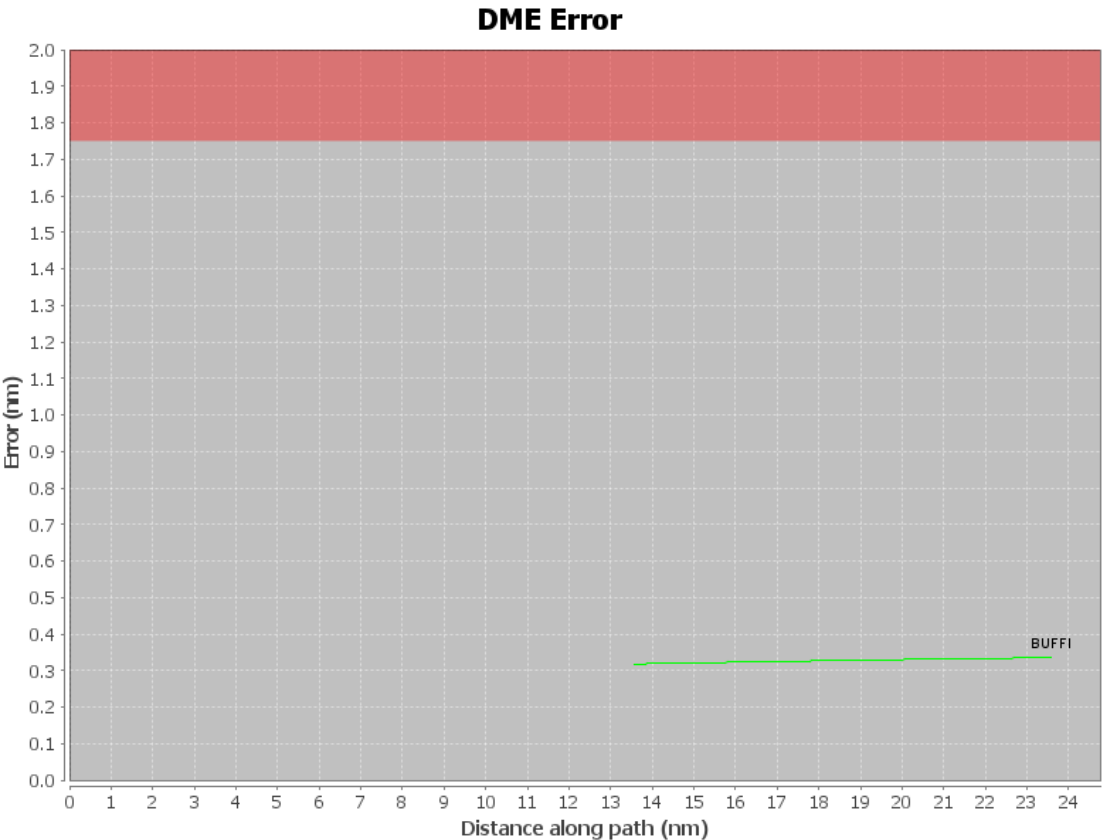
DME DME Assessment Results for FATHE1 path KMCO:RW36R:DER_BUFFI

User Data Files

#	File Name
1	UserDMEsKMCO [IFPA] FATHE1 SID_20200716_0817 EDT.udt

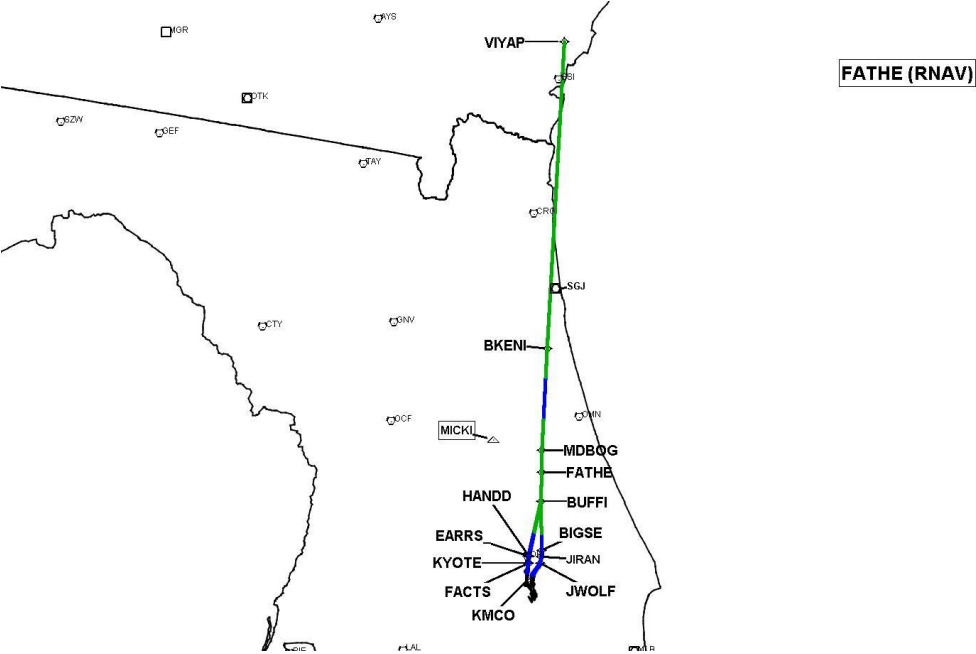
User DMEs

#	Name	Lat/Lon	MAGVAR	Range	Elevation [ft]	Frequency	Replaces	Status
1	MLB FAA 815809-23 MLB [IFPA]	N28° 06' 19.120", W080° 38' 06.460"	7.0 W	40	34	110.0	MLB FAA 815809-23	
ESV:		Bearing [True]: 297.0° to 10.0° Bearing [Mag]: 304.0° to 17.0°				Arc Distance: Out to 81.0 NM Altitude: 4000.0 to 18000.0 ft		
2	CTY FAA 704013-052 CTY [IFPA]	N29° 35' 56.403", W083° 02' 55.651"	2.0 W	40	55.8	112.0	CTY FAA 704013-052	
ESV:		Bearing [True]: 63.0° to 143.0° Bearing [Mag]: 65.0° to 145.0°				Arc Distance: Out to 106.0 NM Altitude: 7700.0 to 16500.0 ft		
3	GNV FAA 704230-048 GNV [IFPA]	N29° 41' 31.613", W082° 16' 22.701"	4.0 W	40	160.8	116.2	GNV FAA 704230-048	
ESV:		Bearing [True]: 116.0° to 141.0° Bearing [Mag]: 120.0° to 145.0°				Arc Distance: Out to 72.0 NM Altitude: 5000.0 to 10200.0 ft		



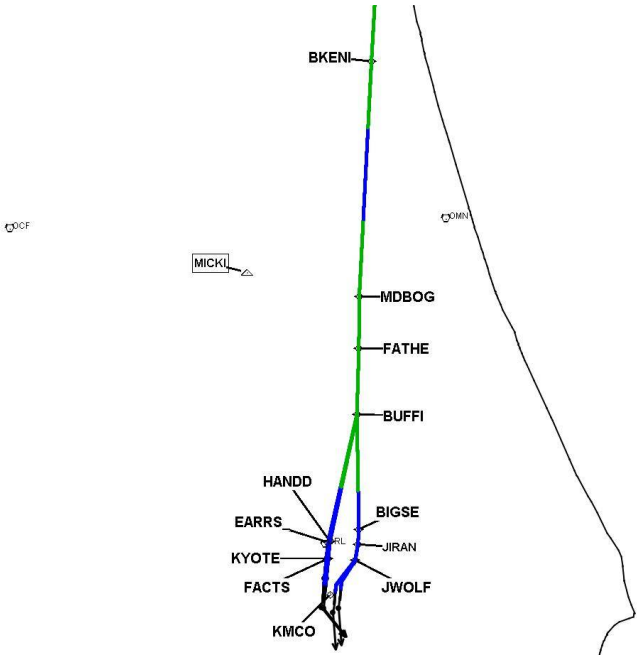
DME DME Assessment Results for FATHE1 path KMCO:RW36R:DER_BUFFI

Graphic Depiction 1



DME DME Assessment Results for FATHE1 path KMCO:RW36R:DER_BUFFI

Graphic Depiction 2



DME DME Assessment Results for FATHE1 path KMCO:RW36R:DER_BUFFI

Graphic Depiction 3

