

Flight Procedures Cover Page	Task Action: FLIGHT CHECK	Task Type: IAP	Estimated Chart Date: 12/01/2022	APWS Task ID: F2C3B66AE02B4B1A8A25CC8D3E37D0E8	APWS Project ID: D70BE13C6AC24BEE970B81E151D70963
Procedure: RNAV (GPS) RWY 11 AMDT 0C		Enroute: NO	Specialist: Combs, Patrick		Agreement Number:
Airport ID: KGIF			Airport City: WINTER HAVEN		State: FL
Facility ID:	Facility Type:	Flight Inspection Remark Type: New FC Slot			
<p>Procedure Comments: ACTIVE AIRPORT AND RWY DATA USED.</p> <p>CANCELS NOTAM: FDC 1/5717</p> <p>NEW CONTROLLING OBSTACLES: INITIAL: RIYDO TO HOVOM: 579 TOWER (12-002439) 280300.00N/0815632.00W INTERMEDIATE: HOVOM TO JOSIR: 579 TOWER (12-002439) 280300.00N/0815632.00W FINAL (LPV): JOSIR TO RW11: 196 TREE (12-168252) 280348.27N/0814551.49W FINAL (LNAV/VNAV): JOSIR TO RW11: 241 TREE (12-168032) 280321.23N/0814620.61W</p> <p>CRC REMAINDER CHANGED FROM 828B4113 TO 641259E0.</p> <p>CONTACT JASON KRETSCHMER, AJV-A421, 405-954-4019.</p> <p style="text-align: center;"><i>Digitally signed by</i> JASON KRETSCHMER Aug 05, 2022</p>					



8.3.2022
BD



FIPC BASIC FORM						
PROCEDURE: RNAV (GPS) RWY 11 AMDT 0C			AIRPORT NAME: WINTER HAVEN RGNL		AIRPORT ID: KGIF	SPECIAL CONTROL NO: AG-08-108-22
FAC ID: KGIF11		CITY: WINTER HAVEN			ST: FL	ORIG CHART DATE: 12/01/2022
DFL TYPE: PROC/S	THIRD PARTY: <input type="checkbox"/> YES	EST. TIME ON SITE: 0.4	REIMB. NUMBER:	PTS TASK ID: F2C3B66AE02B4B1A8A25CC8D3E37D0E8		
PREFLIGHT NOTES						
REVIEWER:					DATE:	
COMMENTS:					CHECK ONE:	
					<input type="checkbox"/> FLT CK REQ <input type="checkbox"/> NFCR <input type="checkbox"/> REJECT	
						YES
					CPV COMPLETE?	X
PROCEDURE RESULTS						
INSPECTION DATE: 09/14/2022	CREW #: VN364	N #: N75	INSTRUMENT PROCEDURE STATUS: <input checked="" type="checkbox"/> SAT <input type="checkbox"/> SAT W/CHANGES <input type="checkbox"/> UNSAT		ARINC CODING: <input checked="" type="checkbox"/> SAT <input type="checkbox"/> SAT/GOLD <input type="checkbox"/> UNSAT	
FLIGHT INSPECTOR SIGNATURE: kevin riese @ 09/14/2022 13:32			PRINTED NAME: RIESE, KEVIN JOHN			NOTAM INITIATED? <input type="checkbox"/> YES <input checked="" type="checkbox"/> NO
FLIGHT INSPECTOR REMARKS: Satisfactory						
IN-FLIGHT OBSTACLE REPORT						
OBSTRUCTION ID #:	COORDINATES OR LOCATION:	GNSS ALTITUDE (MSL):	BAROMETRIC ALTITUDE (MSL):		HEIGHT ABOVE GROUND LEVEL:	

WAAS CH 86502 W11A	APP CRS 107°	Rwy Idg TDZE Apt Elev	4001 145 146
--	------------------------	-----------------------------	---

RNAV (GPS) RWY 11

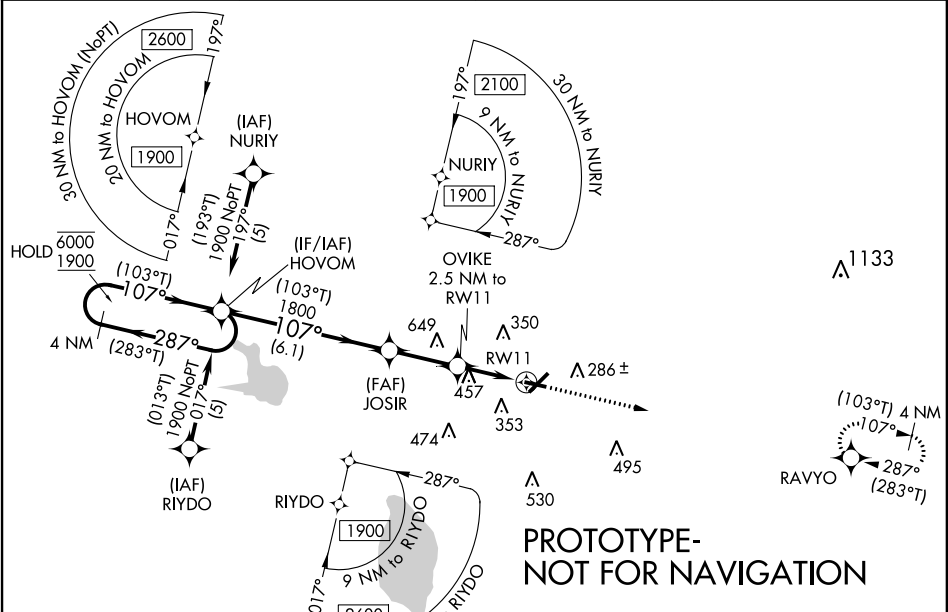
WINTER HAVEN RGNL (GIF)

RNP APCH-GPS.

Rwy 11 helicopter visibility reduction below 1 SM NA. Baro-VNAV NA when using Bartow altimeter setting. For uncompensated Baro-VNAV Systems, LNAV/VNAV NA Below 3°C or above 54°C. When local altimeter setting not received, use Bartow altimeter setting and increase LPV DA to 415 feet; increase LNAV/VNAV DA to 667 feet and all visibilities $\frac{1}{8}$ SM; increase all MDAs 20 feet. Straight-in Rwy 11 NA at night, Circling Rwy 5, 11, 29 NA at night.

MISSED APPROACH:
Climb to 2600 direct
RAVYO and hold.

ASOS 133.675	TAMPA APP CON 120.65 290.3	CLNC DEL (GCO) 121.725	UNICOM 123.05 (CTAF) 0
------------------------	--------------------------------------	----------------------------------	----------------------------------



ELEV 146		TDZE 145	
4 NM Holding Pattern		2600 RAVYO	
6000 1900		RAVYO	
GP 3.00° TCH 45		RAVYO	
HOVOM		JOSIR	
OVIKE		RW11	
6.1 NM		2.5 NM	
CATEGORY	A	B	C
LPV DA	395-1 250 (300-1)		
LNAV/ VNAV DA	647-1 $\frac{3}{8}$ 502 (600-1 $\frac{3}{8}$)		
LNAV MDA	760-1 615 (700-1)	760-1 $\frac{3}{4}$ 615 (700-1 $\frac{3}{4}$)	
CIRCLING	760-1 614 (700-1)	820-2 674 (700-2)	960-2 $\frac{3}{4}$ 814 (900-2 $\frac{3}{4}$)
REIL Rwys 5 and 23 REIL Rwys 11 and 29 MIRL Rwy 5-23 and 11-29			

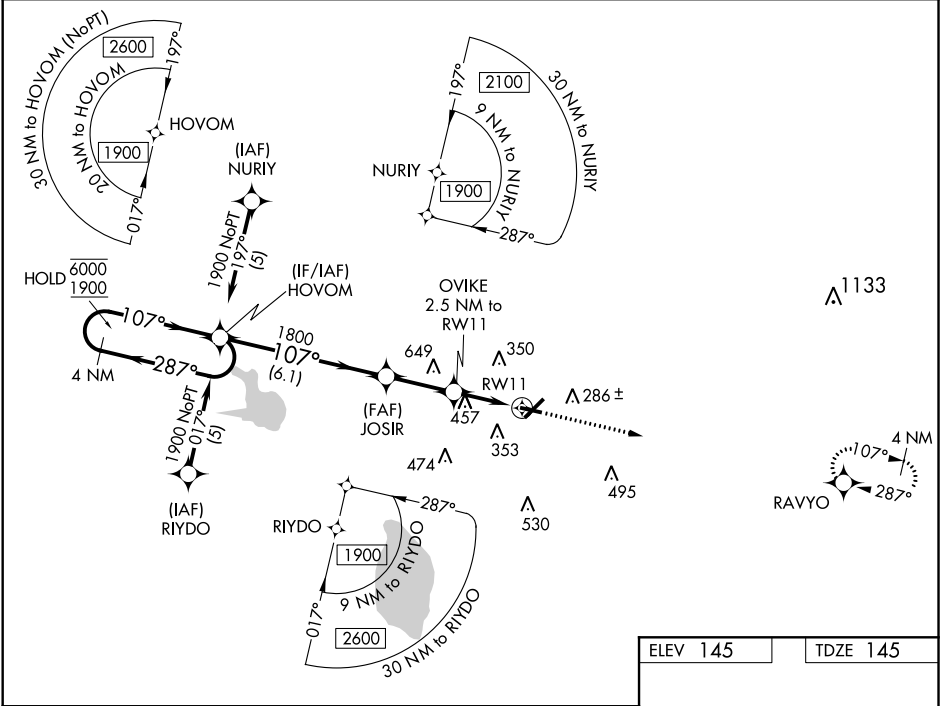
WAAS CH 86502 W11A	APP CRS 107°	Rwy Idg TDZE 145 Apt Elev 145
--	------------------------	---

OLD

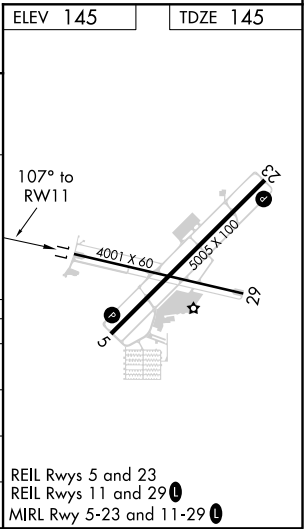
RNAV (GPS) RWY 11
WINTER HAVEN RGNL (GIF')

RNP APCH-GPS. ⚠ Rwy 11 helicopter visibility reduction below 1 SM NA. For uncompensated Baro-VNAV systems, LNAV/VNAV NA below -15°C or above 54°C. Straight-in and Circling Rwy 11 NA at night. When local altimeter setting not received, use Bartow altimeter setting and increase all DA/MDAs 20 feet. Baro-VNAV NA when using Bartow altimeter setting.	MISSED APPROACH: Climb to 2600 direct RAVYO and hold.
--	--

ASOS 133.675	TAMPA APP CON 120.65 290.3	CLNC DEL (GCO) 121.725	UNICOM 123.05 (CTAF) 0
------------------------	--------------------------------------	----------------------------------	----------------------------------



4 NM Holding Pattern	HOVOM	JOSIR	OVIKE	RW11
6000 1900	1800	1800	2.5 NM to RW11	
GP 3.00° TCH 45				
	6.1 NM	2.5 NM	2.5 NM	
CATEGORY	A	B	C	D
LPV DA	395-1 250 (300-1)			
LNAV/VNAV DA	647-1¾ 502 (600-1¾)			
LNAV MDA	760-1 615 (700-1)	760-1¾ 615 (700-1¾)	760-2 615 (700-2)	
CIRCLING	760-1¾ 615 (700-1¾)	820-2 675 (700-2)	960-2¾ 815 (900-2¾)	



SE-3, 14 JUL 2022 to 11 AUG 2022

SE-3, 14 JUL 2022 to 11 AUG 2022

MAP SCALE: 1:100,000

LNAV JOSIR to OVIKE
TOWER (649) 12-002751

Initial RIYDO to HOVOM
Intermediate HOVOM to JOSIR
TOWER (579) 12-002439

LNAV OVIKE to RW11
TOWER (457) 12-000526

Missed Level Surface
TOWER (654)12-003986

CTC TAMPA APP WITHIN
20 NM ON 119.65, 353.575

MAP SCALE: 1:100,000

