

Flight Procedures Cover Page	Task Action: P-NOTAM	Task Type: IAP	Estimated Chart Date: 04/20/2023	APWS Task ID: F24164DDEB724FE5ADF18A0F080199BF	APWS Project ID: 4C824F7EC8E742E78CDA6583E9C15D01
Procedure: ILS OR LOC RWY 30, AMDT 1C		Enroute: NO	Specialist: Dougherty, Steven		Agreement Number:
Airport ID: KMIA			Airport City: MIAMI		State: FL
Facility ID: DCX	Facility Type: ILS	Flight Inspection Remark Type:			
<div>Procedure Comments: PROCESSED IAW TECHNICAL SUPPORT GROUP (AJF-17) MEMO DATED 07/07/2021, SUBJECT: GUIDANCE FOR PROCEDURAL CHANGES REQUIRING FLIGHT INSPECTION/VALIDATION.  REASON FOR PROJECT: PNOTAM, CANCEL TNOTAM 2/0142.  PENDING/ACTIVE AIRPORT DATA USED.  CONTACT JASON E. KRETSCHMER, AJV-A421, 405-954-4019.  <div>Digitally signed by <b>JASON KRETSCHMER</b> Feb 21, 2023</div></div>					



AL-257 (FAA)

MIAMI, FLORIDA

22195

LOC/DME I-DCX <b><u>111.7</u></b> Chan <b>54</b>	APP CRS <b>304°</b>	Rwy Idg <b>7913</b> TDZE <b>8</b> Apt Elev <b>9</b>
--	------------------------	---

ILS or LOC RWY 30  
MIAMI INTL (MIA)

**T**

DME required.  
Inop table does not apply.

MALS

**MISSED APPROACH:** Climb to 800 then climbing right turn to 2000 on heading 310° and DHP VORTAC R-335 to BRBRA/11.5 DME and hold.

D-ATIS	
ARR	<b>119.15</b>
DEP	<b>133.675</b>

MIAMI APP CON	
124.85	322.3

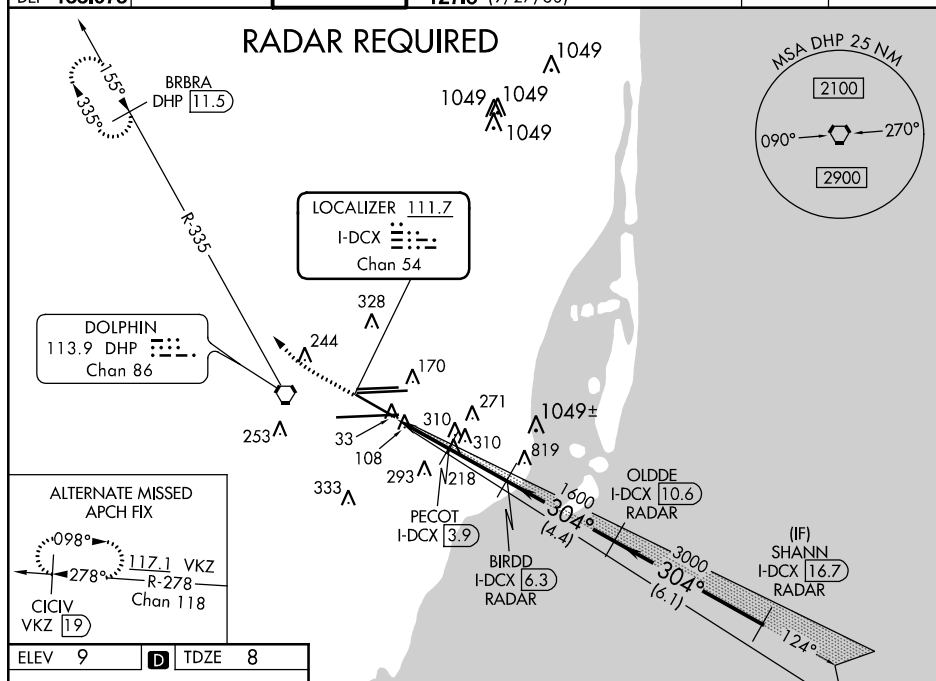
MIAMI TOWER	
118.3	256.9

	GND CON
<b>121.8</b>	(8L/8R/12/26L/26R)
<b>127.5</b>	(9/27/30)

CLNC DEL	135.35
----------	--------

CPDLC

## RADAR REQUIRED



SE-3, 29 DEC 2022 to 26 JAN 2023

SE-3, 29 DEC 2022 to 26 JAN 2023

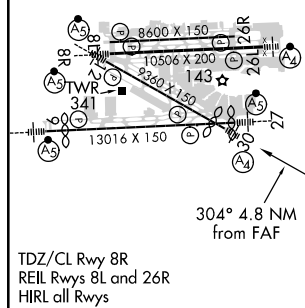
ELEV	9	<b>D</b>	TDZE	8
------	---	----------	------	---

800 ↑	2000 hdg 310°	DHP R-335	BRBRA DHP 11.5
----------	---------------------	--------------	-------------------

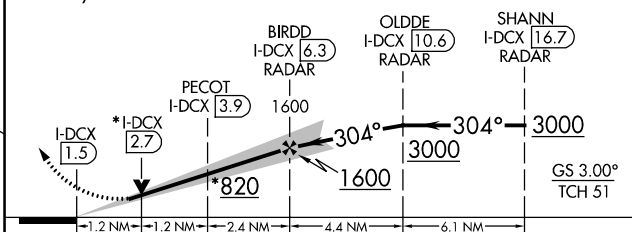
VGSI and ILS glidepath not coincident (VGSI Angle 3.00/TCH 71).

DCX localizer unusable within 0.5 NM.

\*LOC only.



TDZ/CL Rwy 8R  
REIL Rwys 8L and 26R  
HIRL all Rwys



CATEGORY	A	B	C	D
S-ILS 30	258/40 250 (300-¾)			
S-LOC 30	460/40 452 (500-¾)	460/60 452 (500-1¼)	460-1½ 452 (500-1½)	

MIAMI, FLORIDA

Amdt 1B 17AUG17

25°48'N-80°17'W

MIAMI INTL (MIA)

ILS or LOC RWY 30