

Flight Procedures Cover Page	Task Action: Abbreviated Amendment	Task Type: IAP	Estimated Chart Date: 06/15/2023	APWS Task ID: F1DAF02C60FE4848B7A53E6950060C2E	APWS Project ID: E42F632E254C4FB5A08FE1E66916B084
Procedure: RNAV (GPS) RWY 2 AMDT 0E		Enroute: NO	Specialist: Johnsen, Daniel		Agreement Number:
Airport ID: KMMI			Airport City: ATHENS		State: TN
Facility ID:	Facility Type:	Flight Inspection Remark Type:			
<p>Procedure Comments:</p> <p>Processed IAW Technical Support Group (AJF-17) Memo dated 07/07/2021, Subject: Guidance for Procedural Changes Requiring Flight Inspection/Validation.</p> <p>GQO VOR MON.</p> <p>Contact Jason Kretschmer, AJV-A421, 405-954-4019.</p> <p>05/2/23: This is a corrected copy of the form approved on 03/10/23.</p> <p>1. Changed secondary altimeter note from "...LNAV VISIBILITY CATS C AND D, AND CIRCLING VISIBILITY CATS A AND C 1/2 SM" to "...LNAV VISIBILITY CATS C AND D 1/2 SM, AND CIRCLING VISIBILITY CAT A 1/4 SM AND CAT C 1/2 SM" -- 1/2 SM increase to circling CAT A results in a greater visibility requirement than circling CAT B.</p> <div><div><div>Digitally signed by</div><div>JASON KRETSCHMER</div><div>May 03, 2023</div></div><div><div>QUALITY</div><div>33</div><div>CHECKED</div></div><div><div>QUALITY</div><div>34</div><div>CHECKED</div></div></div>					

APP CRS	Rwy Idg	5501
022°	TDZE	846
	Apt Elev	874

OLD

RNAV (GPS) RWY 2

MCMINN COUNTY (MMI)

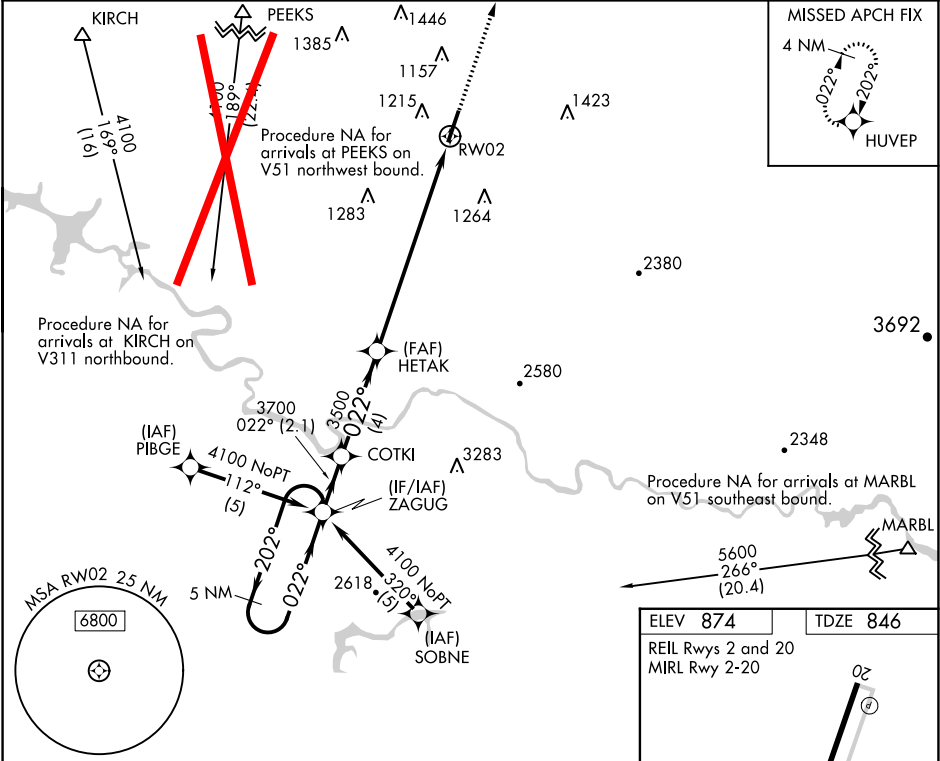
RNP APCH - GPS.

NA

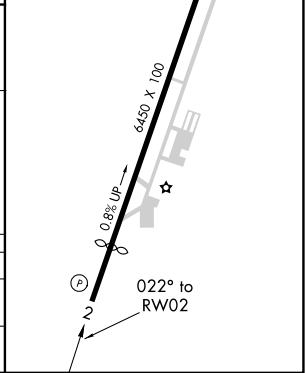
Straight-in Rwy 2 NA at night. Circling Rwy 2 NA at night. Rwy 2 helicopter visibility reduction below 1 SM NA. When local altimeter setting not received, use Mc Ghee Tyson altimeter setting and increase all MDAs 120 feet and LNAV visibility Cat C/D ½ SM, and Circling visibility Cat A ¼ SM, Cat C ½ SM.

MISSED APPROACH:
Climb to 3100 direct
HUVEP and hold.

AWOS-3 125.425	KNOXVILLE APP CON 123.9 353.6	UNICOM 122.8 (CTAF)
-------------------	----------------------------------	------------------------



5 NM Holding Pattern					3100	HUVEP
ZAGUG					↑	
COTKI					✦	
HETAK					✦	
RW02					✦	
2.1 NM					4 NM	
8.1 NM						
CATEGORY	A	B	C	D		
LNAV MDA	1600-1 754 (800-1)	1600-1¼ 754 (800-1¼)	1600-2 754 (800-2)	754 (800-2)		
CIRCLING	1600-1 726 (800-1)	1600-1¼ 726 (800-1¼)	1600-2 726 (800-2)	1820-3 946 (1000-3)		



SE-1, 01 DEC 2022 to 29 DEC 2022

SE-1, 01 DEC 2022 to 29 DEC 2022