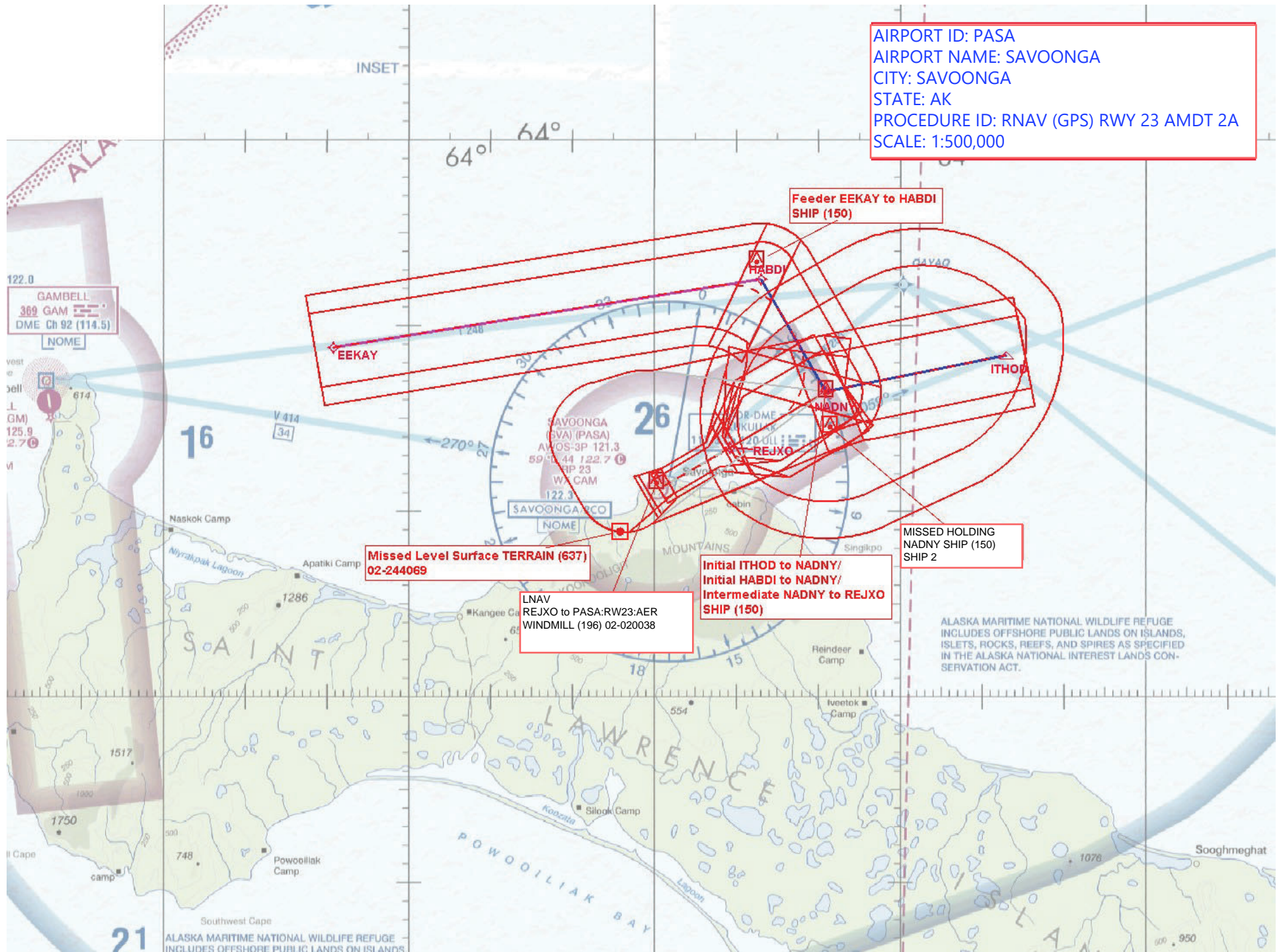
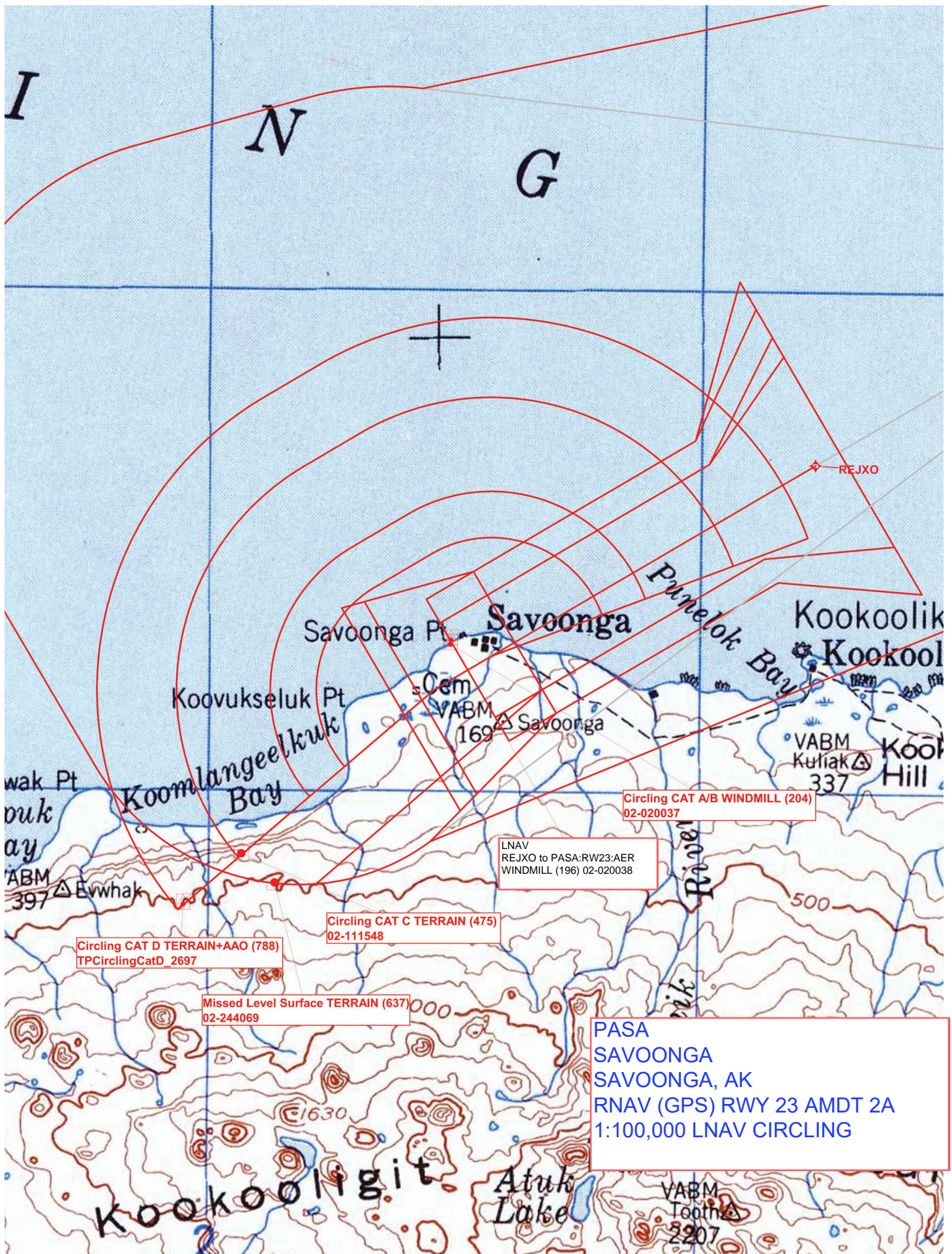


Flight Procedures Cover Page	Task Action: Abbreviated Amendment	Task Type: IAP	Estimated Chart Date: 04/17/2025	APWS Task ID: F198032645ED45C293E4B82475FD5C9C	APWS Project ID: D9C3C45EB68F419B871E5F77C8D1F7AE
Procedure: RNAV (GPS) RWY 23 AMDT 2A		Enroute: NO	Specialist: Dugan, Joshua		Agreement Number:
Airport ID: PASA			Airport City: SAVOONGA		State: AK
Facility ID:	Facility Type:	Flight Inspection Remark Type:			
<div>Procedure Comments: ABBREVIATED AMENDMENT</div> <div>PROCESSED IAW TECHNICAL SUPPORT GROUP (AJF-17) MEMO DATED 07/07/2021 GUIDANCE FOR PROCEDURAL CHANGES REQUIRING FLIGHT INSPECTION/VALIDATION</div> <div>ACTIVE DATA USED FOR PASA</div> <div>THIS CANCELS FDC NOTAMS 4/7038 AND 4/9936.</div> <div>CONTACT ERIC SUSKI 405-954-7331 AJV-A431</div> <div>QUALITY 26 CHECKED</div> <div>QUALITY 41 CHECKED</div>					

AIRPORT ID: PASA
AIRPORT NAME: SAVOONGA
CITY: SAVOONGA
STATE: AK
PROCEDURE ID: RNAV (GPS) RWY 23 AMDT 2A
SCALE: 1:500,000





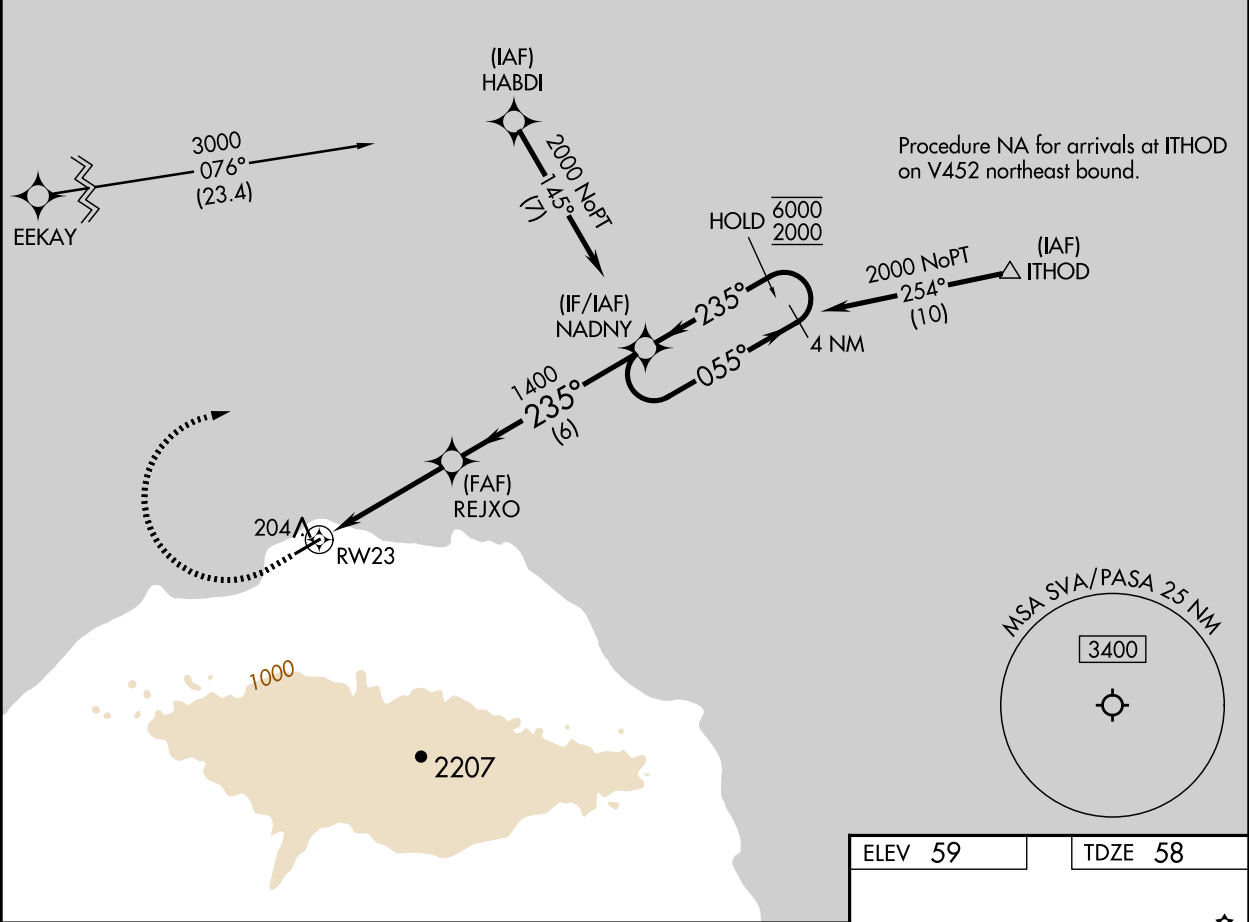
WAAS CH 58245 W23A	APP CRS 235°	Rwy Idg TDZE Apt Elev	4400 58 59
--	------------------------	-----------------------------	---------------------------------------




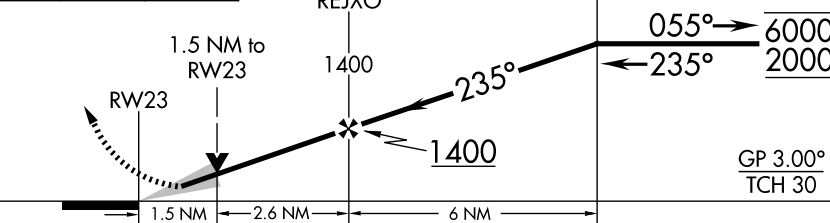
RNAV (GPS) RWY 23

SAVOONGA (SVA) (PASA)

RNP APCH - GPS.	MISSED APPROACH: Climb to 510 then climbing right turn to 2000 direct NADNY and hold.
For uncompensated Baro-VNAV systems, LNAV/VNAV NA below -22°C or above 54°C. Circling NA southeast of Rwy 5-23.	

AWOS-3P 121.3	ANCHORAGE CENTER 132.2 281.4	NOME RADIO 122.3	CTAF 122.7 0
-------------------------	--	----------------------------	------------------------



510	2000	NADNY	VGSI and RNAV glidepath not coincident (VGSI Angle 3.00/TCH 24).			
						
CATEGORY	A	B	C	D		
LPV DA	308-1 250 (300-1)					
LNAV/VNAV DA	408-1 350 (400-1)					
LNAV MDA	460-1	402 (500-1)	460-1½	402 (500-1½)		
CIRCLING	520-1	461 (500-1)	780-2 721 (800-2)	1100-3 1041 (1100-3)		

