

Flight Procedures Cover Page	Task Action: Abbreviated Amendment	Task Type: IAP	Estimated Chart Date: 12/29/2022	APWS Task ID: F16EE8AF62AD4266B6054661CEB7A03F	APWS Project ID: 61734082BEF143B282F22FE04680452D
Procedure: RNAV (GPS) RWY 19 AMDT 1C		Enroute: NO	Specialist: Boone, Victor		Agreement Number:
Airport ID: KIRS			Airport City: STURGIS		State: MI
Facility ID:	Facility Type:	Flight Inspection Remark Type:			
<div>Procedure Comments:</div> <div>PENDING DATA USED.</div> <div>MAG VAR KIRS: OLD 4W-NEW 6W</div> <div>CONTACT INFO: CASIMIR TABAKA, AJV-A432 MANAGER, 405.954.7931</div> <div><div>Digitally signed by CASIMIR L TABAKA Aug 24, 2022</div><div><div>QUALITY 33 CHECKED</div><div>QUALITY 8 CHECKED</div></div></div>					

FIPC BASIC FORM						
PROCEDURE: RNAV (GPS) RWY 19 AMDT 1C			AIRPORT NAME: KIRSCH MUNI		AIRPORT ID: KIRS	SPECIAL CONTROL NO: BG-09-014-22
FAC ID: KIRS19.01		CITY: STURGIS			ST: MI	ORIG CHART DATE: 12/29/2022
DFL TYPE: PROC/S	THIRD PARTY: <input type="checkbox"/> YES	EST. TIME ON SITE: 0.4	REIMB. NUMBER:	PTS TASK ID: F16EE8AF62AD4266B6054661CEB7A03F		
PREFLIGHT NOTES						
REVIEWER: glen b freeman					DATE: 09/23/2022	
COMMENTS: BG-09-014-22, KIRSCH MUNI, STURGIS, MI, RNAV (GPS) RWY 19 AMDT 1C, SAT, NFCR. CHANGED PROCEDURE NAME FROM RNAV (GPS) RWY 18 TO RNAV (GPS) RWY 19, CRC REMAINDER CHANGED FROM B3DFCC75 TO 001D23F0 - KIRS RUNWAY RENUMBER FOR MAGVAR					CHECK ONE: <input type="checkbox"/> FLT CK REQ <input checked="" type="checkbox"/> NFCR <input type="checkbox"/> REJECT <div style="border-top: 1px solid black; display: flex; justify-content: space-between; padding-top: 2px;"> YES NO </div> <div style="border-top: 1px solid black; display: flex; justify-content: space-between; padding-top: 2px;"> CPV COMPLETE? X </div>	
PROCEDURE RESULTS						
INSPECTION DATE: 09/23/2022	CREW #: VN329	N #:	INSTRUMENT PROCEDURE STATUS: <input checked="" type="checkbox"/> SAT <input type="checkbox"/> SAT W/CHANGES <input type="checkbox"/> UNSAT		ARINC CODING: <input type="checkbox"/> SAT <input type="checkbox"/> SAT/GOLD <input type="checkbox"/> UNSAT	
FLIGHT INSPECTOR SIGNATURE: glen b freeman @ 09/23/2022 15:28			PRINTED NAME: FREEMAN, GLEN BURSON			NOTAM INITIATED? <input type="checkbox"/> YES <input checked="" type="checkbox"/> NO
FLIGHT INSPECTOR REMARKS:						
IN-FLIGHT OBSTACLE REPORT						
OBSTRUCTION ID #:	COORDINATES OR LOCATION:	GNSS ALTITUDE (MSL):	BAROMETRIC ALTITUDE (MSL):	HEIGHT ABOVE GROUND LEVEL:		

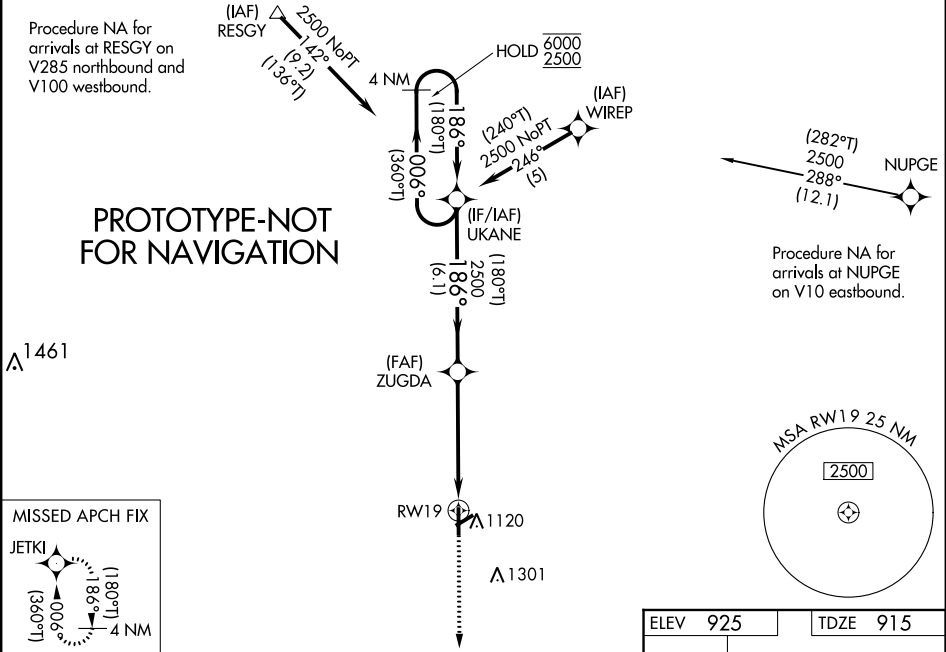
WAAS CH 90230 W19A	APP CRS 186°	Rwy Idg TDZE 915 Apt Elev 925	5201
--	------------------------	---	-------------

RNAV (GPS) RWY 19

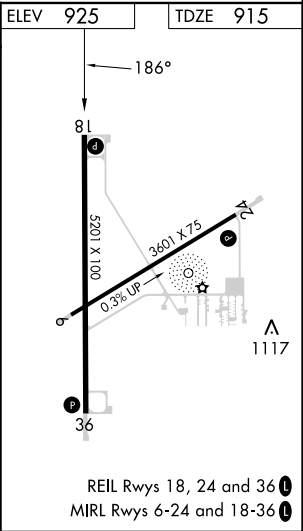
KIRSCH MUNI (IRS)

RNP APCH - GPS.	<p>⚠ Circling Rwy 6 NA at night. Rwy 19 helicopter visibility reduction below ¼ SM NA. Baro-VNAV NA.</p> <p>⚠ When local altimeter setting not received, use Three Rivers altimeter setting and increase LPV DA to 1276 feet and all visibilities ½ SM. Increase LNAV/VNAV DA to 1270 feet and all visibilities ½ SM. Increase all MDAs 60 feet and LNAV visibility Cat C/D ¼ SM, and Circling visibility Cat C/D ¼ SM.</p>	MISSED APPROACH: Climb to 3000 direct JETKI and hold.
-----------------	---	---

AWOS-3 121.325	GREAT LAKES APP CON ★ 121.2 239.25	CLNC DEL 118.325	UNICOM 123.05 (CTAF) 1
--------------------------	--	----------------------------	----------------------------------



VGSI and RNAV glidepath not coincident (VGSI Angle 3.00/TCH 27).				
4 NM Holding Pattern UKANE				
GP 3.00° TCH 40				
6.1 NM 3.4 NM 1.5 NM				
CATEGORY	A	B	C	D
LPV DA	1235-7/8		320 (400-%)	
LNAV/ VNAV DA	1229-7/8		314 (400-%)	
LNAV MDA	1400-1	485 (500-1)	1400-1 3/8	485 (500-1 1/8)
CIRCLING	1440-1	515 (600-1)	1620-2 695 (700-2)	1620-2 1/4 695 (700-2 1/4)



WAAS CH 90230 W18A	APP CRS 184°	Rwy Idg TDZE 915 Apt Elev 925
--	------------------------	---

RNAV (GPS) RWY 18

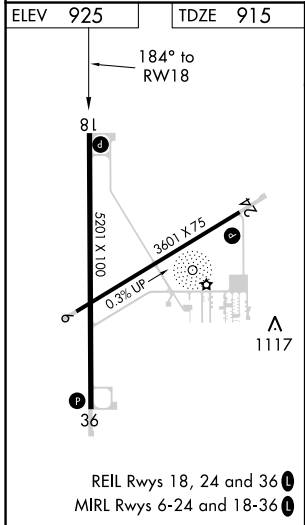
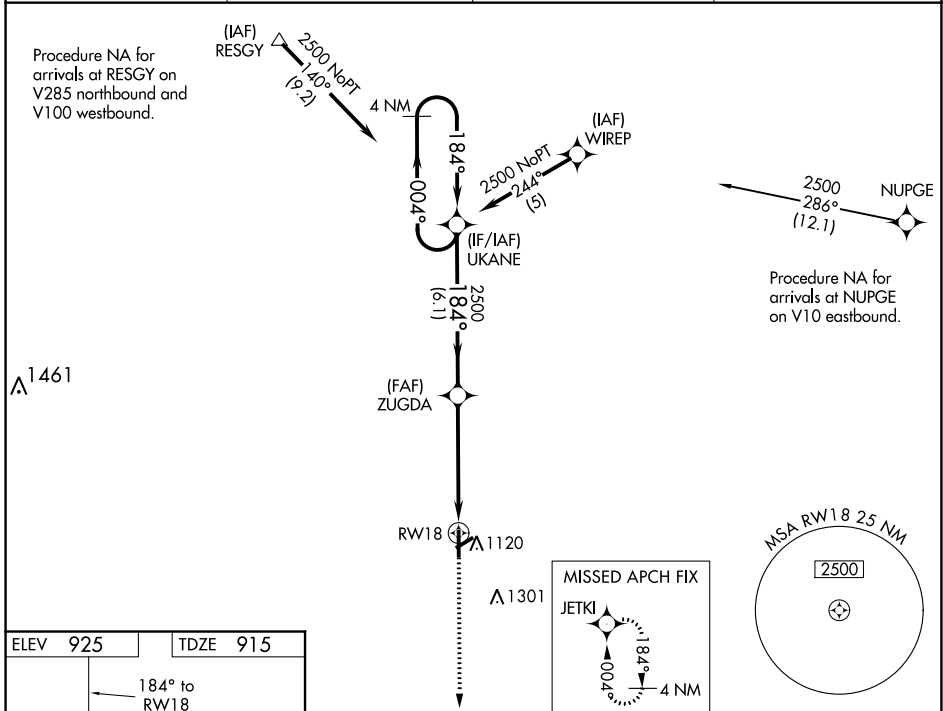
KIRSCH MUNI (IRS)

⚠

Baro-VNAV NA. When VGSI inop, Straight-In/Circling Rwy 18 procedure NA at night. DME/DME RNP-0.3 NA. Visibility reduction by helicopters NA. When local altimeter setting not received, use Three Rivers altimeter setting and increase all DA/MDA 40 feet; increase LPV visibility all Cats and LNAV Cat C and D ½ mile, increase LNAV/VNAV vis all Cats ¼ mile.

MISSED APPROACH:
Climb to 3000 direct JETKI and hold.

AWOS-3 121.325	GREAT LAKES APP CON ★ 121.2 239.25	CLNC DEL 118.325	UNICOM 123.05 (CTAF) 1
--------------------------	--	----------------------------	----------------------------------



3000	JETKI	VGSI and RNAV glidepath not coincident (VGSI Angle 3.00/TCH 27).		4 NM Holding Pattern
ZUGDA		UKANE	2500 004° 184° 2500 GP 3.00° TCH 40	
RW18		4.9 NM	6.1 NM	
CATEGORY	A	B	C	D
LPV DA	1235-1 1/8		320 (400-1 1/8)	
LNAV/VNAV DA	1229-1		314 (400-1)	
LNAV MDA	1400-1	485 (500-1)	1400-1 3/8	485 (500-1 3/8)
CIRCLING	1440-1	515 (600-1)	1620-2 695 (700-2)	1620-2 1/4 695 (700-2 1/4)



Federal Aviation Administration

Initial Development Notification for AIRNAV Pending Records

To: Scott Jerden, Manager Aeronautical Data Team, AJV-A31

From: Bev Bordy, Manager Instrument Flight Procedures Projects Team, AJV-A4

Subject: **ACTION:** Request for Pending Records **KIRS__KIRSCH MUNI, , MI US**

The Magnetic Variation (MV) data for the airport(s) and/or facility(s) listed will be revised effective concurrent with the publication of the procedure(s) listed below. Estimated Chart Date: 12/29/2022

Current/Assigned MV W 4 1995 New MV W 6 2025

ECD	Airport ID	Procedure Name	AMDT #	Task Report Type Selections
12/29/2022	KIRS	NBD RWY 19 AMDT 6A		MAGVAR
12/29/2022	KIRS	RNAV (GPS) RWY 1 ORIG-B		MAGVAR
12/29/2022	KIRS	RNAV (GPS) RWY 19 AMDT 1C		MAGVAR
12/29/2022	KIRS	TAKEOFF MINIMUMS AND ODP AMDT 4A		MAGVAR

NAVAID ID / RWY	Type / Old No.	Use / New RWY/Note
RWY	36	01
RWY	18	19

RUNWAY 18/36 WILL BE RENUMBERED TO RWY 01/19. NDB NAVAID IS NOT BEING UPDATED PER FPT.

IF you have any questions please notify: Casimir.L.Tabaka@faa.gov

Processed Tuesday, July 12, 2022