

Flight Procedures Cover Page	Task Action: FLIGHT CHECK	Task Type: IAP	Estimated Chart Date: 02/20/2025	APWS Task ID: F11CD91F57A041EE96C75A30E72F646F	APWS Project ID: 28F680F7C9D6469982D35EB66214DC9E
Procedure: RNAV (GPS) RWY 13 AMDT 1		Enroute: NO	Specialist: Gorman, Barbara		Agreement Number:
Airport ID: KDDH			Airport City: BENNINGTON		State: VT
Facility ID:	Facility Type:	Flight Inspection Remark Type: New FC Slot			
<div>Procedure Comments: APPROVAL LETTER: PUBLISHING VDA NOT ALIGNED WITH VGSI (8260.3F, 2-6-2). ACTIVE DATA USED FOR AIRPORT AND RUNWAY. REMOVE NOTAM FDC 4/6340 AND 4/7845 CONTACT: JOSEPH ZEDER: 405-954-9111</div>					



FIPC BASIC FORM						
PROCEDURE: RNAV (GPS) RWY 13 AMDT 1			AIRPORT NAME: WILLIAM H MORSE STATE		AIRPORT ID: KDDH	SPECIAL CONTROL NO: YG-11-206-24
FAC ID: KDDH13.01		CITY: BENNINGTON			ST: VT	ORIG CHART DATE: 02/20/2025
DFL TYPE: PROC/G	THIRD PARTY: <input type="checkbox"/> YES	EST. TIME ON SITE: 0.5	REIMB. NUMBER:	PTS TASK ID: F11CD91F57A041EE96C75A30E72F646F		
PREFLIGHT NOTES						
REVIEWER:					DATE:	
COMMENTS:					CHECK ONE: <input type="checkbox"/> FLT CK REQ <input type="checkbox"/> NFCR <input type="checkbox"/> REJECT	
					YES	NO
					CPV COMPLETE? <input checked="" type="checkbox"/> X	
PROCEDURE RESULTS						
INSPECTION DATE: 02/11/2025	CREW #: VN526	N #: N70	INSTRUMENT PROCEDURE STATUS: <input checked="" type="checkbox"/> SAT <input type="checkbox"/> SAT W/CHANGES <input type="checkbox"/> UNSAT		ARINC CODING: <input checked="" type="checkbox"/> SAT <input type="checkbox"/> SAT/GOLD <input type="checkbox"/> UNSAT	
FLIGHT INSPECTOR SIGNATURE: eric l geyer @ 02/11/2025 17:35			PRINTED NAME: GEYER, ERIC LEE			NOTAM INITIATED? <input type="checkbox"/> YES <input checked="" type="checkbox"/> NO
FLIGHT INSPECTOR REMARKS: William H Morse State, Bennington, VT, RNAV (GPS) RWY 13 AMDT 1, SAT. New VDA, FAS obstacle, and mins.						
IN-FLIGHT OBSTACLE REPORT						
OBSTRUCTION ID #:	COORDINATES OR LOCATION:	GNSS ALTITUDE (MSL):	BAROMETRIC ALTITUDE (MSL):	HEIGHT ABOVE GROUND LEVEL:		



Federal Aviation Administration

Memorandum

To: Manager, Flight Procedure Implementation and Oversight Branch

From: Lonnie Everhart, Manager, Instrument Flight Procedures (IFP)
Coordination Team, AJV-A

Subject: Approval Request: WILLIAM H MORSE STATE,
BENNINGTON, VT (KDDH) RNAV (GPS) RWY 13

FAAO 8260.3F, para 2-6-2b. Glidepath Angle (GPA) and Vertical Descent Angle (VDA). Flight Standards approval is required to establish a VDA (of a procedure where the FAC is straight-in aligned) that is less than the angle of a VGSI installed to the same runway.

Runway 13 VGSI at WILLIAM H MORSE STATE, BENNINGTON, VT (KDDH) has a commissioned angle of 4.00 degrees. The procedure was redesigned using the highest allowable VDA in Table 2-6-1, which for CAT C is 3.77 degree to ensure obstacle clearance. Request approval to publish a 3.77 VDA. The current PAPI location will not allow changing the approach angle.

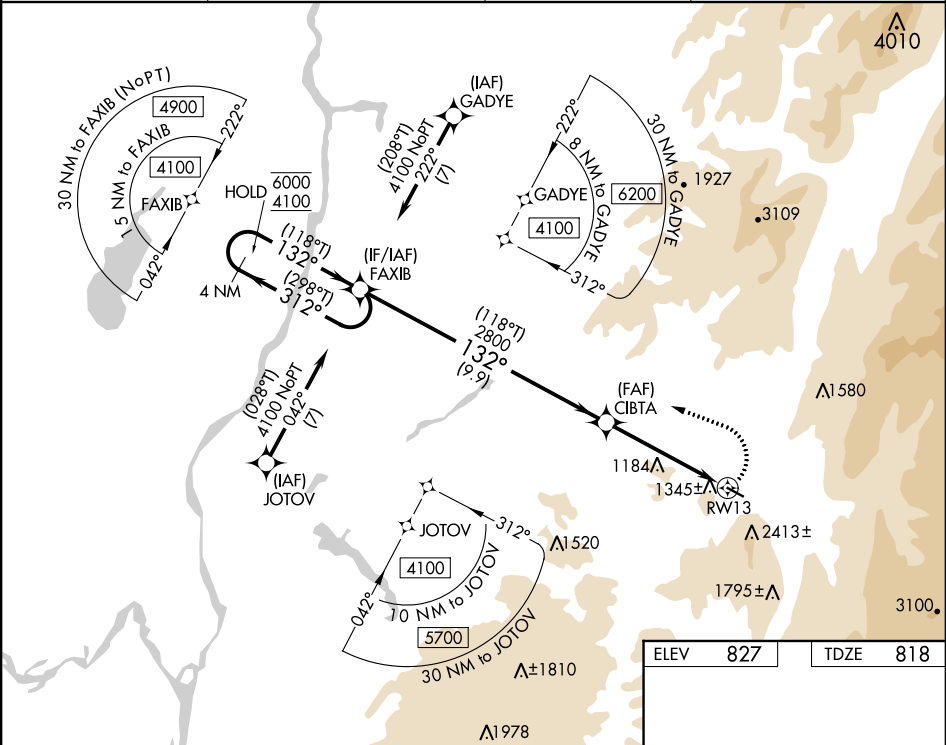
APP CRS	Rwy Idg	3704
132°	TDZE	818
	Apt Elev	827

RNAV (GPS) RWY 13

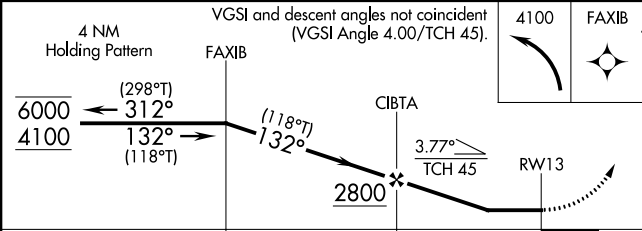
WILLIAM H MORSE STATE (DDH)

RNP APCH - GPS.	MISSED APPROACH: (Do not exceed 210K until FAXIB) Climbing left turn to 4100 direct FAXIB and hold.
▼ Rwy 13 helicopter visibility reduction below 1 SM NA. Circling NA southwest of Rwy 13-31. Procedure NA at night. When local altimeter setting not received, use AQW altimeter setting and increase all MDAs 60 feet.	

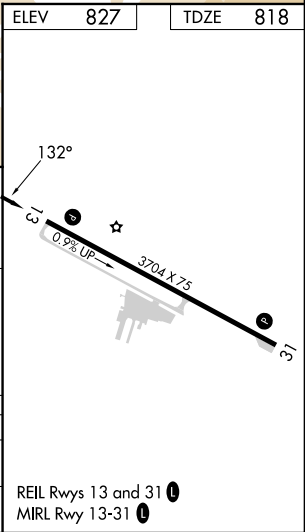
ASOS 135.925	ALBANY APP CON 132.825 307.2	GCO 121.725	UNICOM 122.8 (CTAF) 0
-----------------	---------------------------------	----------------	--------------------------



PROTOTYPE-NOT FOR NAVIGATION



CATEGORY	A	B	C	D
LNVA MDA	2540-1 ¼ 1722 (1800-1 ¼)	2540-1 ½ 1722 (1800-1 ½)	2540-3 1722 (1800-3)	NA
CIRCLING	2540-1 ¼ 1713 (1800-1 ¼)	2540-1 ½ 1713 (1800-1 ½)	2540-3 1713 (1800-3)	NA



APP CRS	Rwy Idg	3704
132°	TDZE	819
	Apt Elev	827

RNAV (GPS) RWY 13

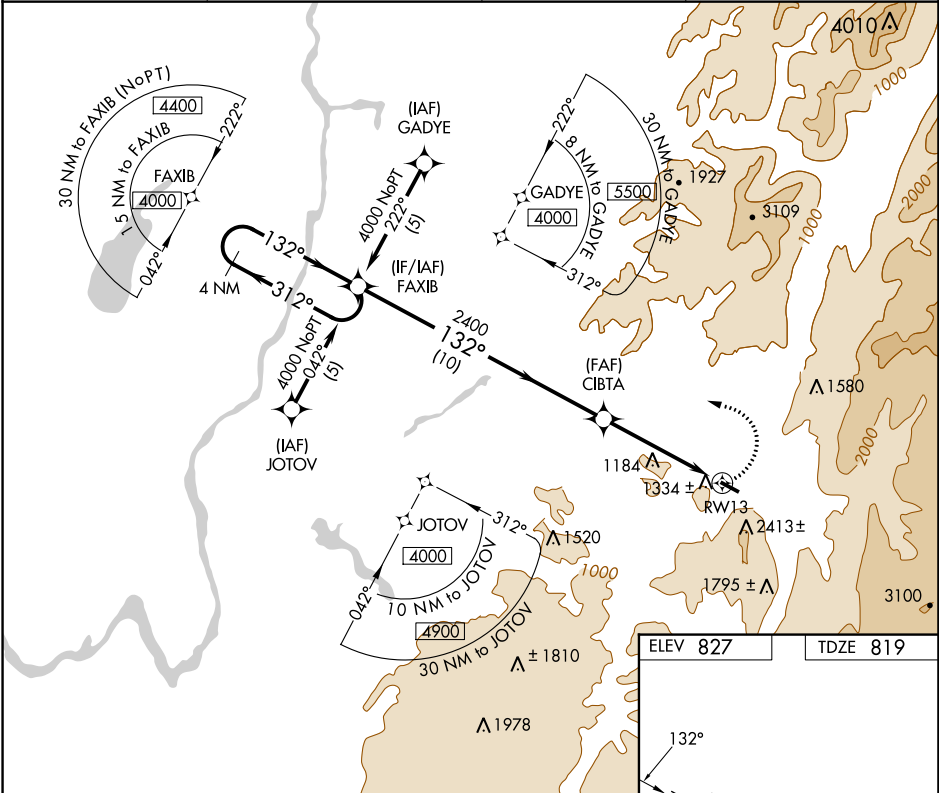
WILLIAM H MORSE STATE (DDH)

RNP APCH - GPS.

NA
-14°C
Rwy 13 helicopter visibility reduction below ¾ SM NA. Circling Rwy 31 NA at night. When VGSi inop, procedure NA at night. When local altimeter setting not received, procedure NA. Circling NA southwest of Rwy 13-31.

MISSED APPROACH:
(Do not exceed 210K until FAXIB)
Climbing left turn to 4000 direct FAXIB and hold.

ASOS 135.925	ALBANY APP CON 132.825 307.2	GCO 121.725	UNICOM 122.8 (CTAF) 0
-----------------	---------------------------------	----------------	--------------------------



4 NM Holding Pattern		Visual Segment - Obstacles.		4000	FAXIB
FAXIB		CIBTA			
4000		2400		RW13	
312°		132°		3.5 NM to RW13	
132°		132°		3.5 NM	
10 NM		1.3 NM		3.5 NM	
CATEGORY	A	B	C	D	
LNAV MDA	2360-1 ¼ 1541 (1600-1 ¼)	2360-1 ½ 1541 (1600-1 ½)	2360-3 1541 (1600-3)	NA	
CIRCLING	2360-1 ¼ 1533 (1600-1 ¼)	2360-1 ½ 1533 (1600-1 ½)	2360-3 1533 (1600-3)	NA	

