
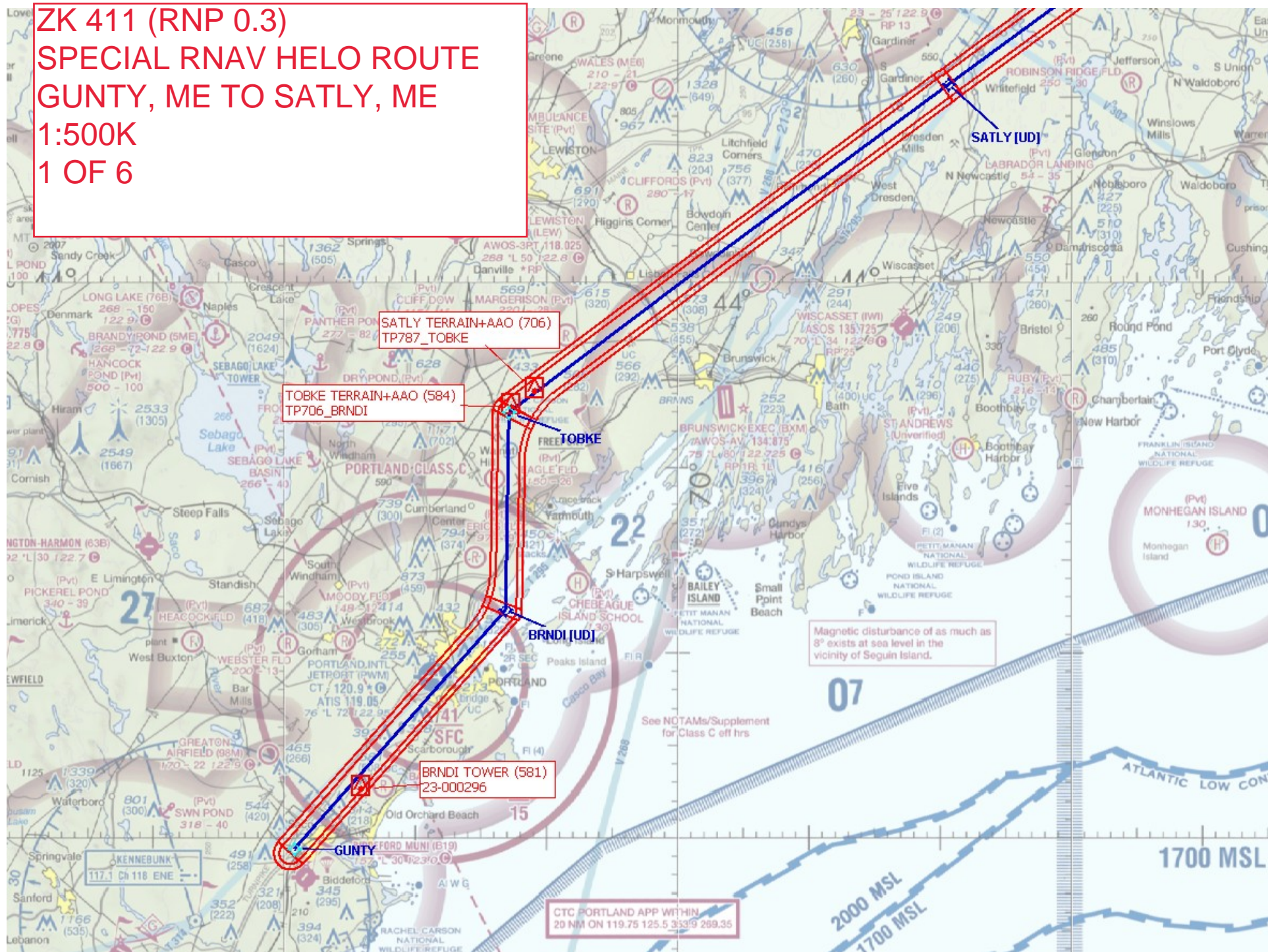


Flight Procedures Cover Page	Task Action: FLIGHT CHECK	Task Type: Route	Estimated Chart Date: 04/20/2023	APWS Task ID: F0FA5794D90D4DCA9D62C72FEF24251C	APWS Project ID: F075672C86E24EA3A9DAC179B8B4BA75
Procedure: ZK411 GUNTY, ME TO EDGUE, ME		Enroute: YES	Specialist: Damron, Todd		Agreement Number:
Airport ID:			Airport City:		State:
Facility ID:	Facility Type:	Flight Inspection Remark Type: Hold FC Slot			
<p>Procedure Comments: AIRWAY STARTING POINT: ZK411 GUNTY, ME TO EDGUE, ME. 432924.30N/0702919.48W SPECIAL LOW LEVEL RNAV HELICOPTER ROUTE; SUPPORT FOR LOM AIR AMBULANCE OPERATIONS. POC FOR THIS MATTER: ALLAN WILL 405-954-6103.</p> <p>01/10/23: THIS IS AN UPDATED COPY OF THE FORM DEVELOPED ON 11/15/22. 8260-16 **SEGMENTS: GUNTY TO BRNDI; BRNDI TO TOBKE; TOBKE TO SATLY -- SEGMENT REMARKS: ADDED REASON FOR GNSS MEA VALUE, GREATER THAN MRA AND MOCA. **SEGMENT: SATLY TO ADILE -- 1. FIX TUSSL REPLACED WITH FIX ADILE DUE TO TUSSL BEING A DUPLICATE ATC FIX. 2. SEGMENT REMARKS: ADDED REASON FOR GNSS MEA VALUE, GREATER THAN MRA AND MOCA. **SEGMENT: ADILE TO MARSY -- 1. FIX TUSSL REPLACED WITH FIX ADILE DUE TO TUSSL BEING A DUPLICATE ATC FIX. 2. SEGMENT REMARKS: ADDED REASON FOR GNSS MEA VALUE, GREATER THAN MRA AND MOCA. **SEGMENT: MARSY TO TECLO -- 1. CHANGED PUB FROM "N" TO "Y". 2. SEGMENT REMARKS: ADDED REASON FOR GNSS MEA VALUE, GREATER THAN MRA AND MOCA. **SEGMENTS: TECLO TO CIYEP; CIYEP TO CORAC -- SEGMENT REMARKS: ADDED REASON FOR GNSS MEA VALUE, GREATER THAN MRA AND MOCA. **SEGMENT: CORAC TO EDGUE -- CORRECTED SEGMENT REMARKS WORD FROM "PERCIPITOUS" TO "PRECIPITOUS".</p> <p>8260-2 ADILE: FIX TUSSL REPLACED WITH FIX ADILE DUE TO TUSSL BEING A DUPLICATE ATC FIX. CHANGED HOLDING TYPE ACTION FROM NO CHANGE TO MODIFY. UPDATED HOLDING PATTERN (1) SPEED FROM 200 TO 100. FIX USE: ADDED SPECIAL HELICOPTER ROUTE ZK411 - NEW ROUTE CONSTRUCTION. CHARTING: ADDED HELICOPTER ROUTE, ENROUTE LOW, AND CONTROLLER LOW - TO ACCOMMODATE NEW ROUTE.</p> <p>8260-2 GUNTY UPDATED HOLDING PATTERN (2) SPEED FROM 200 TO 100.</p> <p>_S (SUPPORT RECORD) CHANGED OUT MAP 2 OF 6.</p> <p>03/09/23: THIS IS AN UPDATED COPY OF THE FORM DEVELOPED ON 11/15/22. 1. 8260-2 TECLO REPLACED REV 1 WITH REV 2 - PROCEDURE WITH TECLO REV 1 SLIPPED AND COINCIDES WITH 06/15/23 PUB DATE. REV 1 CHANGES INCORPORATED INTO REV 2 AND 8260-2 MOVED INTO NON NFDC FILE.</p>					

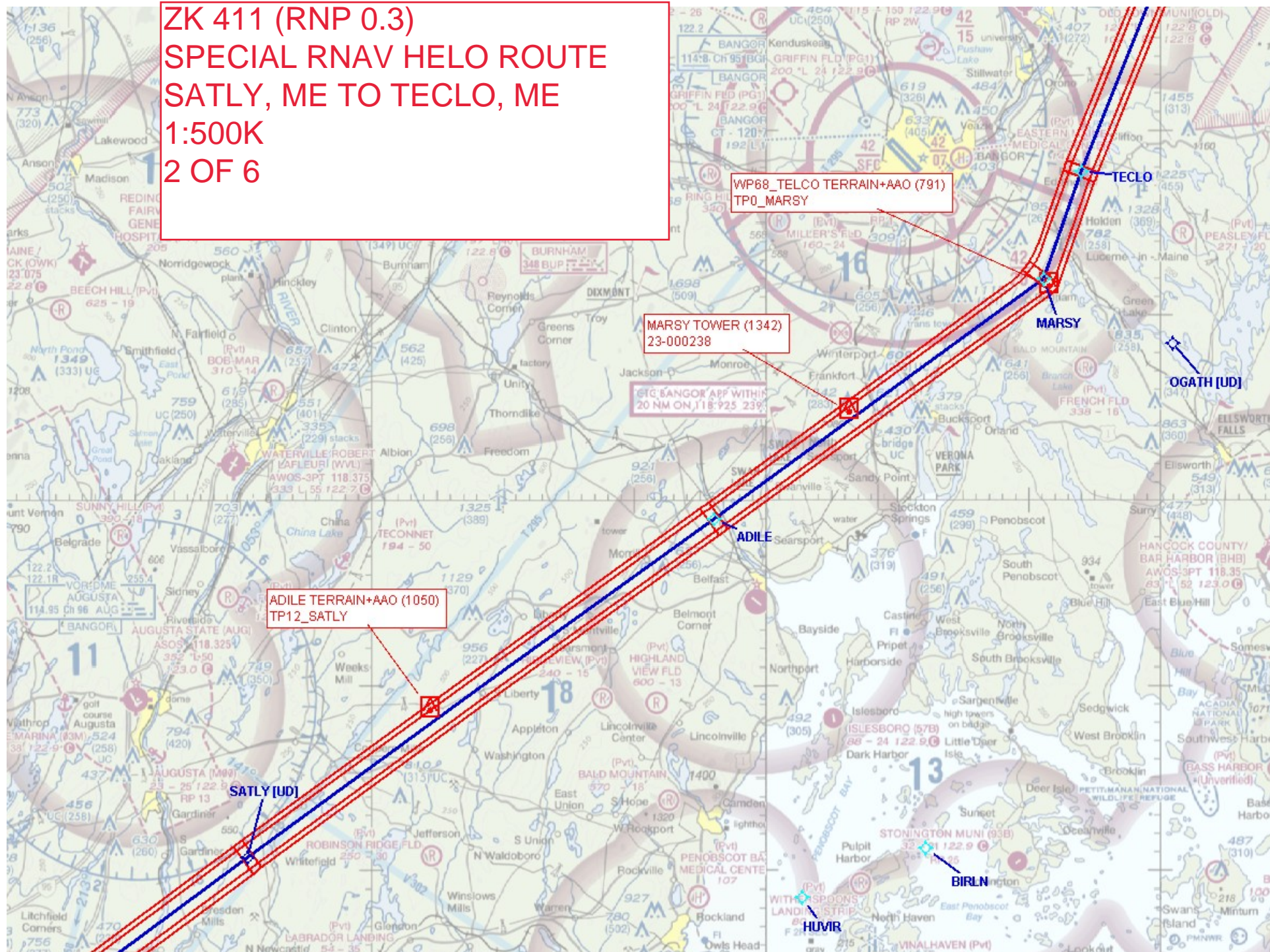


Digitally signed by
PABLO ORTIZ-JR
Mar 09, 2023

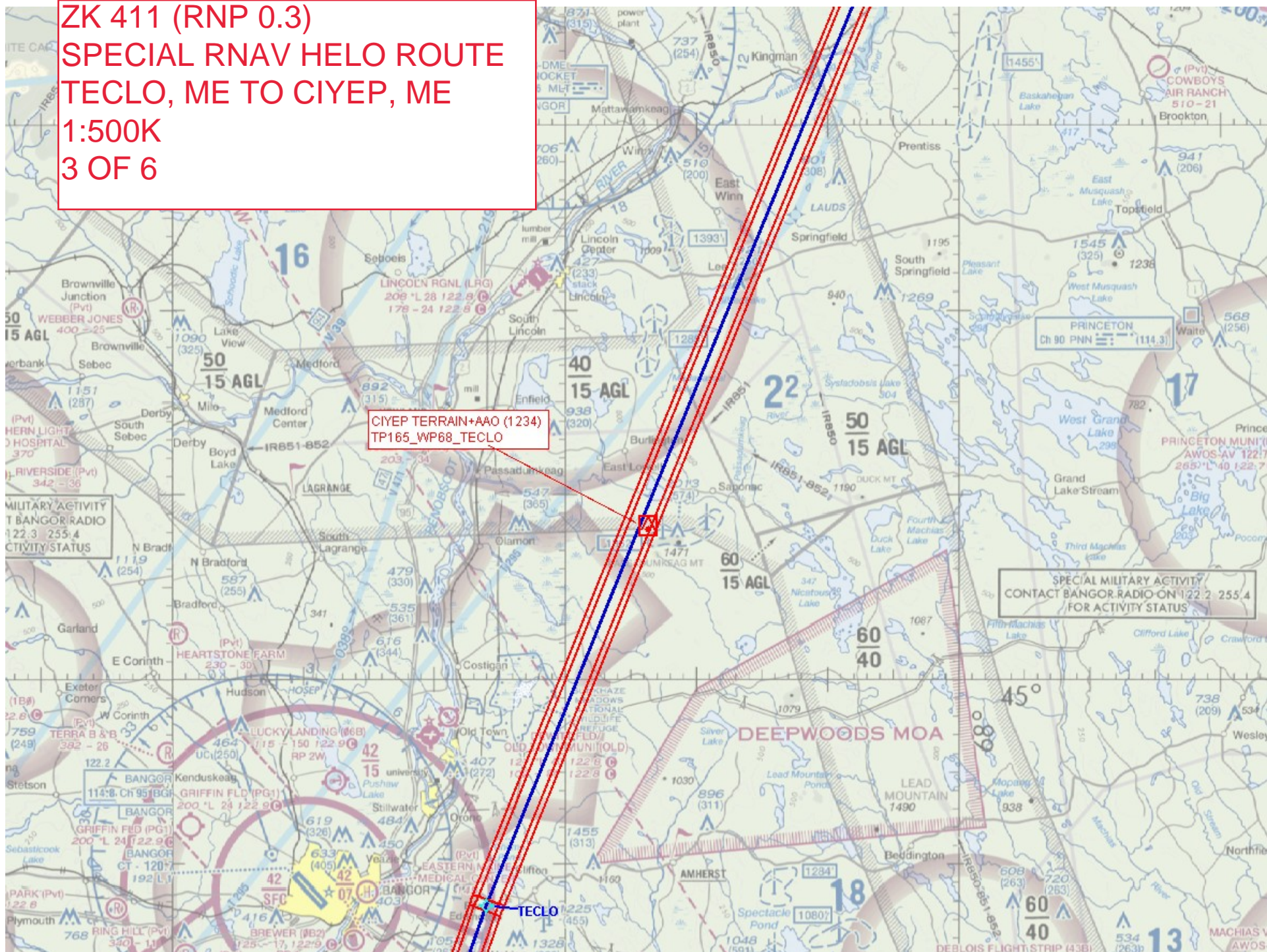
ZK 411 (RNP 0.3)
SPECIAL RNAV HELO ROUTE
GUNTY, ME TO SATLY, ME
1:500K
1 OF 6



ZK 411 (RNP 0.3)
SPECIAL RNAV HELO ROUTE
SATLY, ME TO TECLO, ME
1:500K
2 OF 6



ZK 411 (RNP 0.3)
SPECIAL RNAV HELO ROUTE
TECLO, ME TO CIYEP, ME
1:500K
3 OF 6

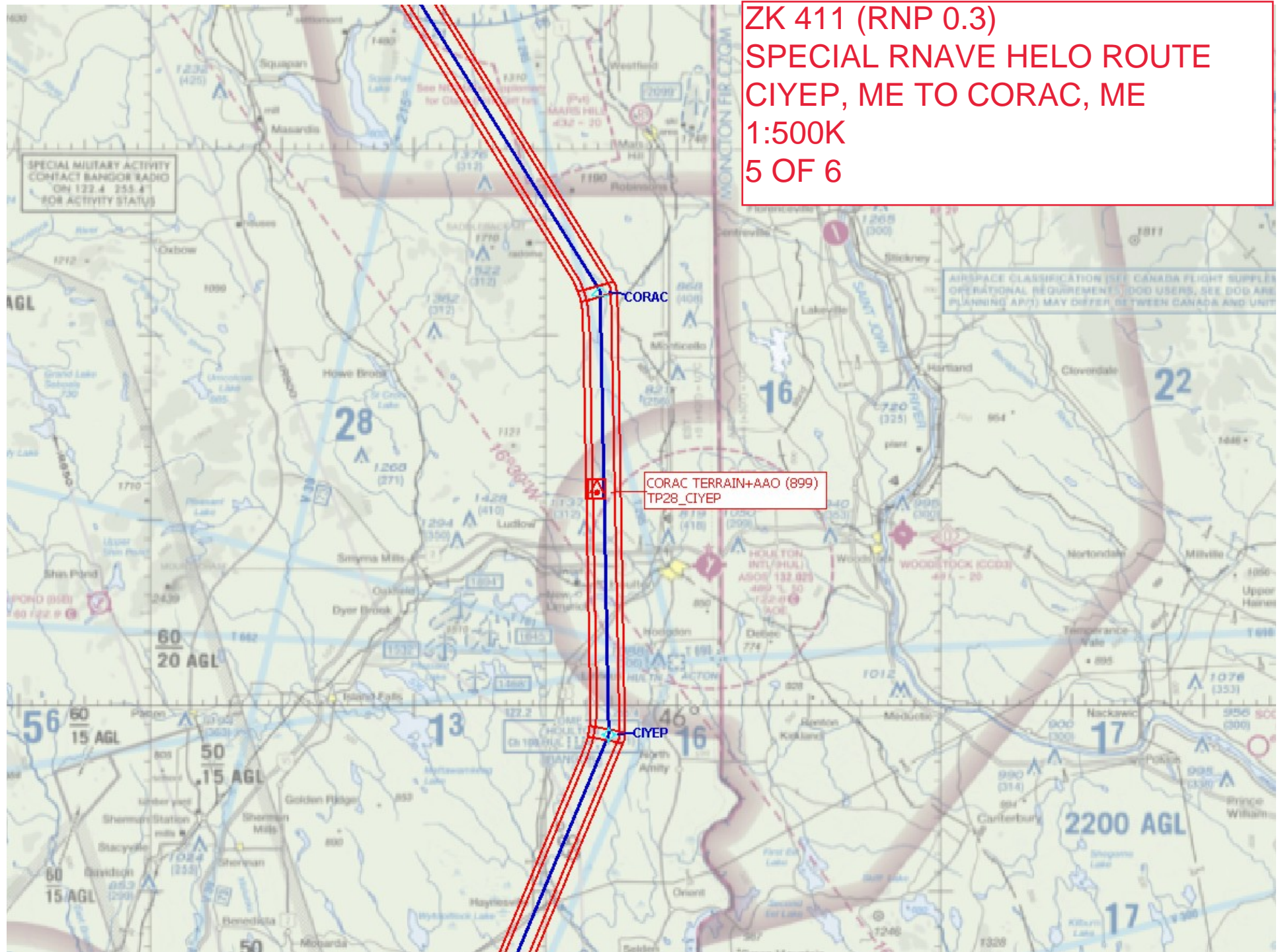


ZK 411 (RNP 0.3)
SPECIAL RNAV HELLO ROUTE
TECLO, ME TO CIYEP, ME
1:500K
4 OF 6

SPECIAL MILITARY ACTIVITY
CONTACT BANGOR RADIO ON 122.4 255.4
FOR ACTIVITY STATUS

CIYEP TERRAIN+AAO (1234)
TP165_WP88_TECLO

ZK 411 (RNP 0.3)
SPECIAL RNAVE HELO ROUTE
CIYEP, ME TO CORAC, ME
1:500K
5 OF 6



ZK 411 (RNP 0.3)
SPECIAL RNAV HELO ROUTE
CORAC, ME TO EDGUE, ME
1:500K
6 OF 6

