

Flight Procedures Cover Page	Task Action: FLIGHT CHECK	Task Type: IAP	Estimated Chart Date: 02/20/2025	APWS Task ID: F0546A16406F436B8B8BDF219EF279284	APWS Project ID: 485AC831DBB24FB092199882B0676A8A
Procedure: RNAV (GPS) RWY 10R AMDT 3		Enroute: NO	Specialist: Gorman, Barbara		Agreement Number:
Airport ID: KFPR			Airport City: FORT PIERCE		State: FL
Facility ID:	Facility Type:	Flight Inspection Remark Type: New FC Slot			
<div>Procedure Comments: ACTIVE DATA USED TO AIRPORT AND RUNWAYS. VORMON PROJECT: TRV VORTAC DECOMMISSIONING. CONTACT: JOSEPH ZEDER: 405-954-9111</div> <div>4/30/2025: THIS IS A CORRECTED COPY OF THE FORM APPROVED ON 03/14/2025 CHANGED CHART PROFILE NOTE FROM : VGSI AND DESCENT ANGLES NOT COINCIDENT (VGSI ANGLE {ANGLE}/TCH {FEET}) TO CHART PROFILE NOTE: VGSI AND RNAV GLIDEPATH NOT COINCIDENT (VGSI ANGLE {ANGLE}/TCH {FEET}).</div> <div><div>QUALITY 41 CHECKED</div><div>QUALITY 10 CHECKED</div></div>					

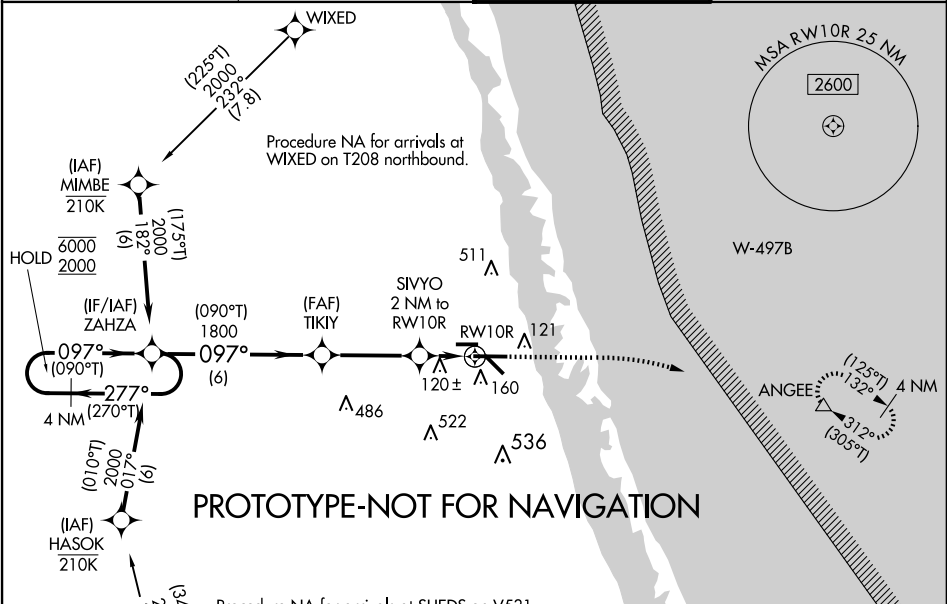
FIPC BASIC FORM						
PROCEDURE: RNAV (GPS) RWY 10R AMDT 3			AIRPORT NAME: TREASURE COAST INTL		AIRPORT ID: KFPR	SPECIAL CONTROL NO: AG-10-065-24
FAC ID: KFPR10R.03		CITY: FORT PIERCE			ST: FL	ORIG CHART DATE: 02/20/2025
DFL TYPE: PROC/S	THIRD PARTY: <input type="checkbox"/> YES	EST. TIME ON SITE: 0.4	REIMB. NUMBER: AC0721	PTS TASK ID: F0546A16406F436B8BBDF219EF279284		
PREFLIGHT NOTES						
REVIEWER:					DATE:	
COMMENTS:					CHECK ONE:	
					<input type="checkbox"/> FLT CK REQ <input type="checkbox"/> NFCR <input type="checkbox"/> REJECT	
						YES
					CPV COMPLETE?	X
PROCEDURE RESULTS						
INSPECTION DATE: 11/25/2024	CREW #: VN526	N #: N77	INSTRUMENT PROCEDURE STATUS: <input checked="" type="checkbox"/> SAT <input type="checkbox"/> SAT W/CHANGES <input type="checkbox"/> UNSAT		ARINC CODING: <input checked="" type="checkbox"/> SAT <input type="checkbox"/> SAT/GOLD <input type="checkbox"/> UNSAT	
FLIGHT INSPECTOR SIGNATURE: eric l geyer @ 11/25/2024 16:03			PRINTED NAME: GEYER, ERIC LEE			NOTAM INITIATED? <input type="checkbox"/> YES <input checked="" type="checkbox"/> NO
FLIGHT INSPECTOR REMARKS: Treasure Coast International, Fort Pierce, FL, RNAV (GPS) RWY 10R AMDT 3. SAT. New feeder from Wixed.						
IN-FLIGHT OBSTACLE REPORT						
OBSTRUCTION ID #:	COORDINATES OR LOCATION:	GNSS ALTITUDE (MSL):	BAROMETRIC ALTITUDE (MSL):	HEIGHT ABOVE GROUND LEVEL:		

WAAS CH 69529 W10A	APP CRS 097°	Rwy Idg 6492 TDZE 23 Apt Elev 23
--	------------------------	---

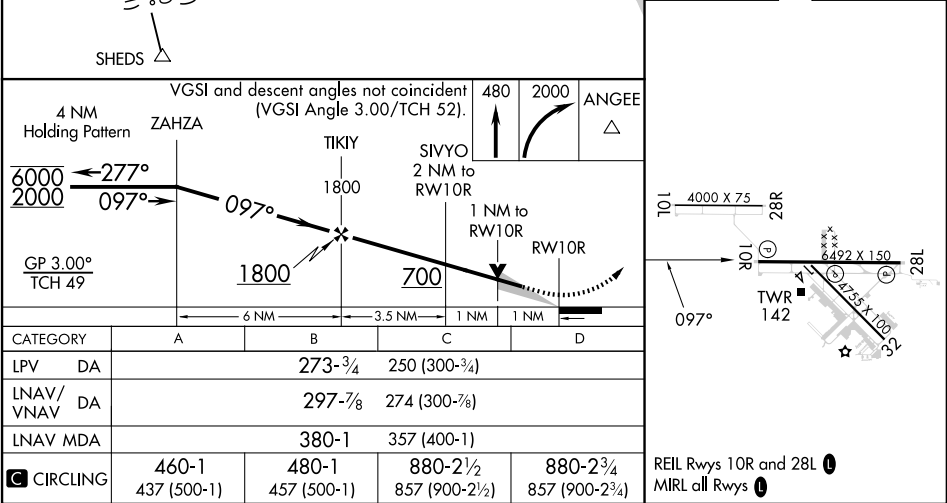
RNAV (GPS) RWY 10R
TREASURE COAST INTL (FPR)

RNP APCH-GPS.	MISSED APPROACH: Climb to 480 then climbing right turn to 2000 direct ANGEE and hold.
▼ ▲ For uncompensated Baro-VNAV systems, procedure NA below 2°C or above 54°C.	

ATIS 134.825	PALM BEACH APP CON 132.8	FORT PIERCE TOWER ★ 128.2 (CTAF) 0	GND CON (GCO) 119.55
------------------------	------------------------------------	--	--------------------------------



ELEV 23	TDZE 23
---------	---------



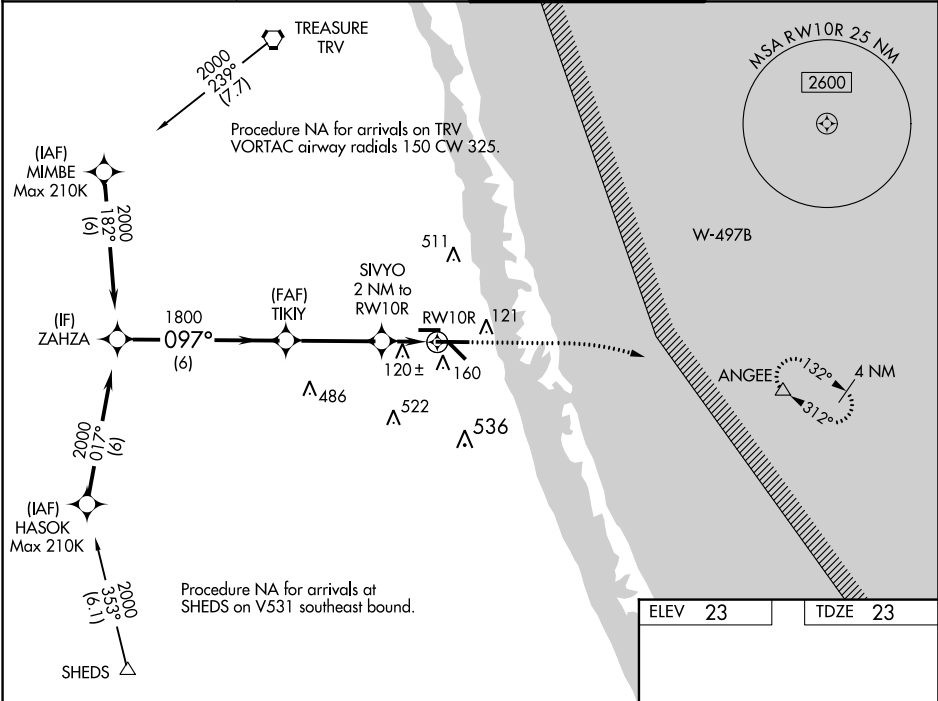
WAAS CH 69529 W10A	APP CRS 097°	Rwy Idg 6492 TDZE 23 Apt Elev 23
--	------------------------	---

RNAV (GPS) RWY 10R
TREASURE COAST INTL (FPR)

⚠ Baro-VNAV NA when using Vero Beach altimeter setting. For uncompensated Baro-VNAV systems, LNAV/VNAV NA below -1°C (31°F) or above 54°C (130°F). When local altimeter setting not received, use Vero Beach altimeter setting and increase all DA 23 feet and all MDA 40 feet; increase LPV all Cats, LNAV/VNAV all Cats and LNAV Cats C/D visibility 1/8 mile, and increase Circling Cat C/D visibility 1/4 mile. DME/DME RNP-0.3 NA. VDP NA with Vero Beach altimeter setting.

MISSED APPROACH: Climb to 480 then climbing right turn to 2000 direct ANGEER and hold.

ATIS 134.825	PALM BEACH APP CON 132.8	FORT PIERCE TOWER ★ 128.2 (CTAF) 0	GND CON (GCO) 119.55
------------------------	------------------------------------	--	--------------------------------

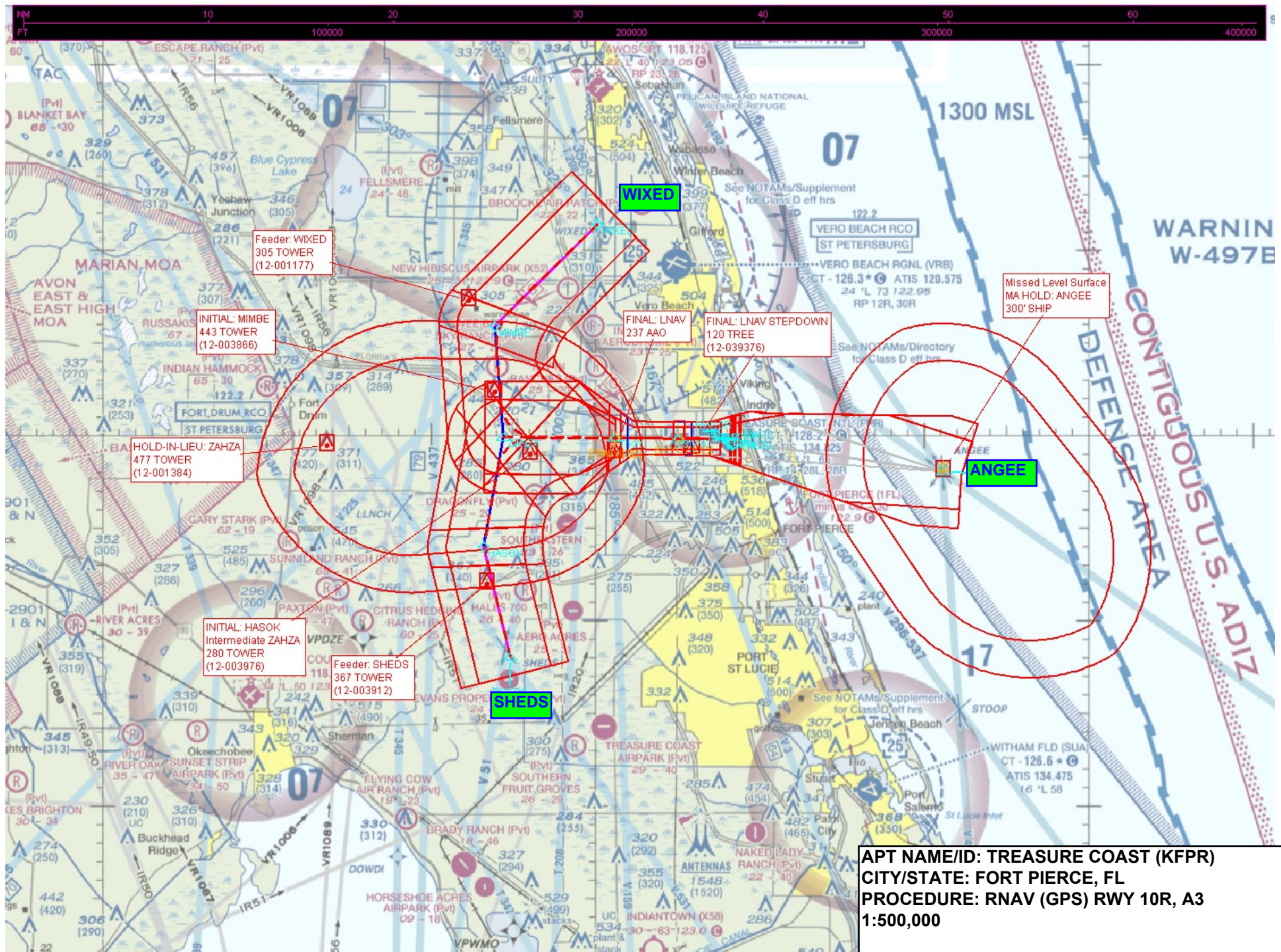


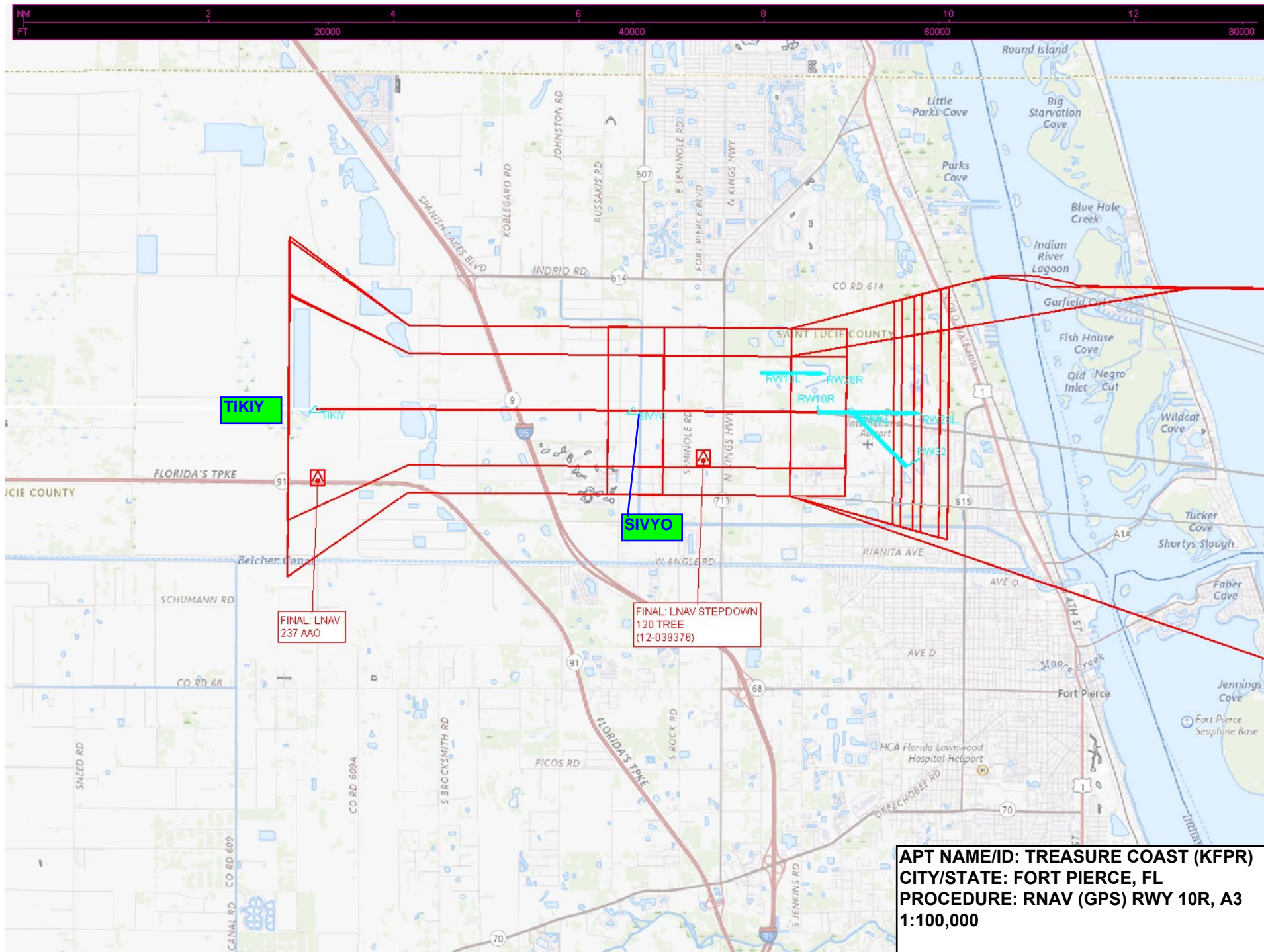
VGSI and RNAV glidepath not coincident (VGSI Angle 3.00/TCH 52).				
ZAHZA 2000 097° 1800 480 2000 ANGEER				
TIKIY 1800 SIVYO 2 NM to RW10R *1 NM to RW10R *700 RW10R				
GP 3.00° TCH 49 6 NM 3.4 NM 1 NM 1 NM				
CATEGORY	A	B	C	D
LPV DA		273-3/4	250 (300-3/4)	
LNAV/VNAV DA		348-1	325 (400-1)	
LNAV MDA		380-1	357 (400-1)	
CIRCLING	460-1 437 (500-1)	480-1 457 (500-1)	880-2 1/2 857 (900-2 1/2)	880-2 3/4 857 (900-2 3/4)

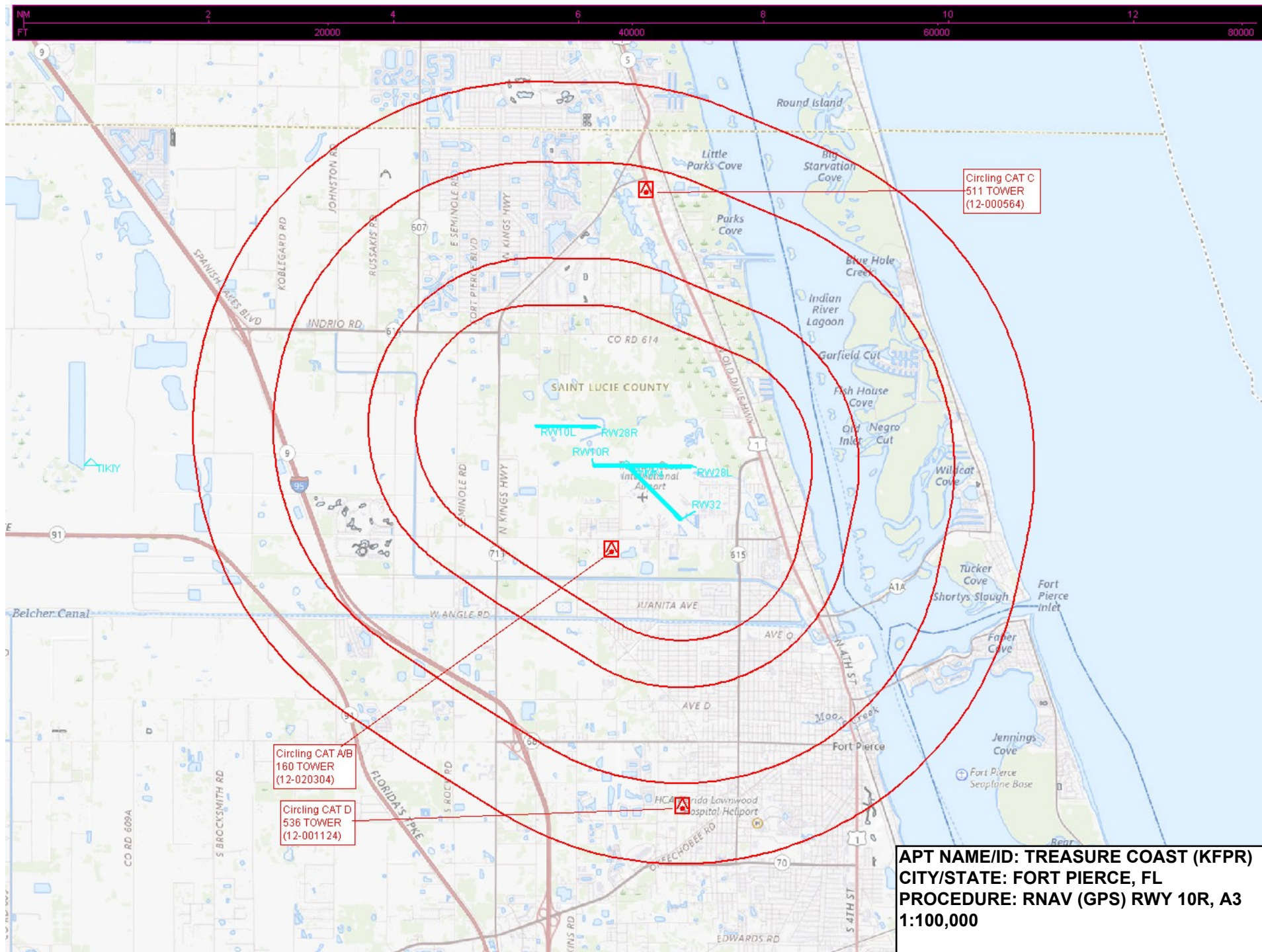
ELEV 23 TDZE 23

REIL Rwy 10R and 28L 0
MIRL all Rwy 0

The diagram shows the runway layout and the tower area. The runway is labeled RW10R and RW28L. The tower is labeled TWR 142. The diagram also shows the MSA (Minimum Safe Altitude) for RW10R at 25 NM, which is 2600 ft. The diagram also shows the MSA (Minimum Safe Altitude) for RW10R at 25 NM, which is 2600 ft.







APT NAME/ID: TREASURE COAST (KFPR)
CITY/STATE: FORT PIERCE, FL
PROCEDURE: RNAV (GPS) RWY 10R, A3
1:100,000